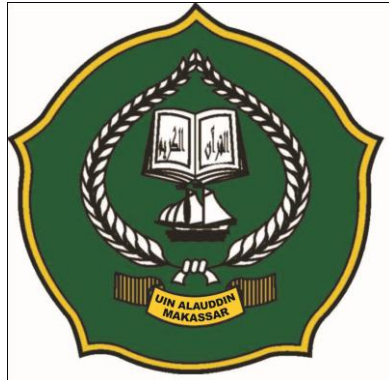


THE ANALYSIS OF VERB FORMATION IN MAKASSARESE



A Thesis

**Submitted in Partial Fulfillment of the Requirements for the Degree of Sarjana
Humaniora in English and Literature Department
of the Faculty of Adab and Humanities
of UIN Alauddin Makassar**

By

ARFANDI RANI
Reg. No. 40300107010

**ENGLISH AND LITERATURE DEPARTMENT
ADAB AND HUMANITIES FACULTY
ALAUDDIN STATE ISLAMIC UNIVERSITY
MAKASSAR
2013**

PERNYATAAN KEASLIAN SKRIPSI

Dengan penuh kesadaran, penyusun yang bertanda tangan dibawah ini, menyatakan bahwa skripsi ini benar adalah hasil karya penyusun sendiri, dan jika dikemudian hari terbukti ia merupakan duplikat, tiruan, plagiat, atau dibuat oleh orang lain secara keseluruhan ataupun sebagian, maka skripsi ini dan gelar yang diperoleh batal demi hukum.

Makassar, 23 September 2013
Penyusun,

(Arfandi Rani)
NIM: 40300107010

PERSETUJUAN PEMBIMBING

Pembimbing penulisan skripsi saudara **ARFANDI RANI, NIM: 40300107010**, Mahasiswa jurusan Bahasa dan Sastra Inggris pada Fakultas Adab dan Humaniora UIN Alauddin Makassar, setelah dengan seksama meneliti dan mengoreksi skripsi yang bersangkutan berjudul **“THE ANALYSIS OF VERB FORMATION IN MAKASSARESE”** memandang bahwa skripsi tersebut memenuhi syarat-syarat ilmiah dan dapat disetujui untuk dapat diajukan pada sidang munaqasyah.

Demikian persetujuan ini diberikan untuk diproses lebih lanjut.

Makassar, September 2013

Pembimbing I

Pembimbing II

Dr. Abd. Muin, M.Hum
NIP: 19660102 199203 1 002

Syahrini Junaid, S.S., M.Pd.
NIP: 19810415 200901 2 005

PENGESAHAN SKRIPSI

Skripsi yang berjudul, “The Analysis of Verb Formation in Makassarese” yang disusun oleh Arfandi Rani, NIM: 40300107010, mahasiswa jurusan Bahasa dan Sastra Inggris pada Fakultas Adab dan Humaniora UIN Alauddin Makassar telah diuji dan dipertahankan dalam sidang *munaqasyah* yang diselenggarakan pada hari Kamis, 26 September 2013 M., bertepatan dengan , dinyatakan telah dapat diterima sebagai salah satu syarat untuk memperoleh gelar Sarjana dalam Ilmu Adab dan Humaniora, Jurusan Bahasa dan Sastra Inggris.

Samata, 26 September 2013 M.

7 Shafar 1434 H.

DEWAN PENGUJI:

Ketua	: Drs. H. M. Dahlan M., M.Ag.	(.....)
Sekretaris	: Faidah Yusuf, S.S., M.Pd.	(.....)
Munaqisy I	: Rosmah Tami, S.Ag., M.Sc., MA.	(.....)
Munaqisy II	: Sardian Maharani Asnur, S.Pd., M.Pd.	(.....)
Pembimbing I	: Dr. Abd. Muin, M.Hum	(.....)
Pembimbing II	: Syahrini Djunaid, S.S., M.Pd.	(.....)

Diketahui oleh:

Dekan Fakultas Adab dan Humaniora
UIN Alauddin Makassar

Dr. Mardan, M.Ag.

NIP: 19591112 198903 1 001

ACKNOWLEDGEMENTS

بِسْمِ اللَّهِ الرَّحْمَنِ الرَّحِيمِ

First of all, I would like to express a lot of thanks to Allah swt for giving me His blessing, mercy, guidance, and love during my study in Faculty of Adab and Humanities of UIN Alauddin Makassar. I never forget to say greetings and *shalawat* to the great prophet Muhammad saw, the great leader who has brought us from the darkness into the brightness era as we feel today.

During the process of writing this thesis, the writer has a lot of help from many people. My special gratitudes are expressed to my beloved parents, Abdul Malik Rani and Harlina who patiently gives their moral values, advice, love, and prayers for me.

I would like to express my thank to the Rector of UIN Alauddin Makassar, Prof. Dr. Qadir Gassing, HT. MS., the Dean of Adab and Humanities Faculty, Prof. Dr. Mardan, M.Ag. The Head of English and Literature Department, Dr. Abd. Muin, M.Hum., and The Secretary of English and Literature Department, Serliah Nur, S.Pd., M.Hum., M.Ed., for their help, support, suggestion, precious time, and administrative support.

My deep gratitude due to my first Consultant Dr. Abd. Muin, M.Hum and my second Consultant Syahrini Junaid, S.S., M. Pd., for their generous support, advice,

constructive suggestion, and precious time they have given during the completion of this thesis.

Many thanks also go to the lecturers of Adab and Humanities Faculty, for their knowledge and enlightenment, and who have given me advice during the academic years, also to the Staff of Adab and Humanities Faculty, for their help and administrative support.

To my brother Rendrawan Rani, Arman Rani and Ardiansyah Rani thanks for being such nice and wise siblings.

I also would like to express my thanks to my friends, at UIN Alauddin especially at Adab and Humanities Faculty, at BSI 2007, and all of his lovely friends especially for Sarwo Zulfahmi, Imran, Marnawati, Masrur Tenri Angke, Chalil Ichwan, Junaedi, Rusdianto and all of friends thanks for being such a nice person.

The last but not the least, for all family, friends and all people who helped me and I cannot mention one by one thanks for making my life interesting.

Makassar, September 5, 2013

The Writer

Arfandi rani
Reg. No. 40300107010

TABLE OF CONTENT

TITLE PAGE.....	i
HALAMAN PERNYATAAN KEASLIAN SKRIPSI	ii
HALAMAN PERSETUJUAN PEMBIMBING	iii
HALAMAN PENGESAHAN SKRIPSI	iv
ACKNOWLEDGEMENT	v
TABLE OF CONTENT	vii
ABSTRACT	ix
CHAPTER I.	
INTRODUCTION	1
A. Background	1
B. Problem Statement	3
C. Objective of Research.....	3
D. Significance of Research	4
E. Scope of Research.....	4
CHAPTER II.	
REVIEW OF RELATED LITERATURE	5
A. Some Relevant Research Finding	5
B. Morphology	6
C. Word-formations	7
D. Morpheme.....	8
E. An overview of Makassarese	14
F. Verb Formation in Makassarese	16
CHAPTER III.	
METHOD OF RESEACH	18
A. Method of Research	18
B. Data Source	18
C. Instrument of Research	18
D. Procedures of Data Collection	19
E. Technique of Data Analysis	19

CHAPTER IV.	FINDING AND DISCUSSION	20
	A. Finding	20
	B. Discussion.....	25
CHAPTER V.	CONCLUSION AND SUGGESTION.....	43
	A. Conclusion	43
	B. Suggestion	43
BIBLIOGRAPHY		45
BIOGRAPHY		47

ABSTRACT

Name : Arfandi rani
Reg. Number : 40300107010
Title : “The Analysis of Verb Formation in Makassarese
Consultant I : Abd. Muin
Consultant II : Syahrani Junaid

Arfandi Rani, 2013. The Analysis of Verb Formation in Makassarese. Thesis. Adab and Humanities Faculty. State Islamic University. The objective of this research are (1) How is the process of verb formation in Makassarese? (2) How does the addition of bound morphemes change the word meaning?

The method used in this research is descriptive method. The sources of data for this writing thesis used some books that discussing about process of verb formation in Makassarese. The instrument used in this research are Note-taking and Interview.

Based on the result of the data analysis, the writer found that the part of bound morpheme in Lakiung dialect consist of prefix, suffix and confix. Prefix Si-, an-, ang- : they are derivation of word formation, and it is class maintaining, prefix an- : it is inflectional and it is marker of progressive. Suffix -i, -ka, -ki : they are derivational and it is class maintaining. Confix am-I is derivational and it is class maintaining. And confix napa-i, a'-i : they are derivational class changing.

In this research, the researcher concludes that in makassarese especially Lakiung dialect in verb if adding of affixation such us prefix, suffix and confix change the word meaning.

The implication of this research is to give more description, understanding to the readers and as a reference for students Adab and Humanities faculty who wants to discuss Lakiung dialect using morphology research.

CHAPTER I

INTRODUCTION

A. Background

People commonly agree that language is primary need for human beings, with language we expressed our mind with through language people express their emotion. Language cannot be separated every person in people's daily life. All of human activities are done or cannot even be done without using language. In brief, without language human's life is meaningless and not enjoyable at all. There are great numbers of language spoken by people throughout the world, namely English, Spanish, French, Indonesia, etc. They are some instances, which, are spoken in different speech communities and different language but have the same function that is as means of communication.

Language as a basic of the tool of activities, outside of the language activity itself. Language is also used in investigating the activities outside of the languages activities. As an independent activity. Language is more than a tool for communication the reality (Spradley, 1997:23).

While in the linguistic text, language is a system of sound symbol that has meaning and articulation (Wibowo, 2001:23)

According to Lado (1977: 3) that there is no two languages use exactly the same set of possible arrangement. The differences are not merely in matter of word and unit of sounds, but also in the variations of forms. Each language is structurally different system of communication.

From Lado's statement above, it is very clear that English and the three local languages in South Sulawesi are different. They of course have different system of communication. Correlated with the previous statement, it seems there will be difficulties in learning a language because the people who want to learn certain language as a foreign language for them, they must apply the rules of native language in the second language they are learning. For instance, Makassarese people who learn English will tend to apply the Makassarese rules into English. This fact indeed becomes a problem in language learning.

As the result beginners yield wrong English, particularly in transferring Makassarese into English. Therefore, English learners, the beginners should learn English words especially the English derivatives in the way that they compare with the derivatives in their native language.

In order to help the English learners, particularly the beginners whose local language is Makassarese learn English comparatively with their local language, this research then comes into being.

One of several things that can be mentioned as a problem in learning English is verb formation. Every single language has different word change in creating a verb formation. It is not only in English but also especially in one of local language that is belonged to South Sulawesi namely Makassarrese.

In Makassar, especially the change of verb formation is totally different with other languages especially in English. Although both of the languages has similarities in creating verb formation but it cannot be denied anymore that two languages are important to know the differences. And they have the uniqueness itself in creating verb and the meaning of the verb will change if the verb formation has been changed.

B. Research questions

Based on the description mentioned above, the researcher formulates research questions as follows:

1. How is the process of verb formation in Makassarrese?
2. How does the addition of bound morphemes change the word meaning?

C. Objective of the study

The objectives of this study are:

1. To find out the process of verb formation in Makassarrese.
2. To find out the addition of bound morpheme change the word meaning.

D. Significance of the study

The finding of this research is expected to be useful for the learner of English, particularly the beginners whose native local language is Makassarese learning to form verb derivatives in English for the sake of improving their vocabulary command and in transferring Makassarese texts to be useful for foreigners, particularly those who speak English that perhaps want to learn about the morphological process of verb formation in Makassarese language. In addition, the finding is expected to become a primary account for future linguistics.

E. Scope of the study

This research focused on the morphological process in Makassarese, especially the verb-formations to be observed are limited to the morphological process of verb formations.

CHAPTER II

REVIEW OF RELATED LITERATURE

A. Previous Findings

Trisnawati (2008). In her thesis, *“The Comparison Between Derivational Noun in English and Makassarese (A Comparative Analysis)”*. Then, she found that Derivational noun affixes in English consist of suffix and prefix, while in Makassarese consists of suffix, prefix, infix, and confix.

Imran (2012) in his thesis, *“The Morphological Analysis of Konjo Dialect Used by Bantaeng Society”*. Next, he found that the part of bound morpheme in Konjo dialect consist of prefix, suffix and confix. Prefix Si-, la-, an: they are derivation of word formation, and it is class maintaining. prefix an- : it is inflectional and it is marker of progressive. Suffix -I, -ka, -na : they are derivational and it is class maintaining. Confix na-I is derivational and it is class maintaining. And confix napa-i, ak-i : they are derivational class changing.

Marnawati (2011) in her thesis, *“The Morphological Process of Noun-Formations in English and Buginese language (Comparative Analysis)”*. Furthermore, the writer found that: (1) the differences between English and Buginese in forming nouns from verbs lies in the term of formal relationships of morphemes, that is the morphological process of noun-formations in English is Suffixations. (2) the similarities lies on the term of positional relationships of morphemes, which

represent successive occurrence and included occurrence, and (3) some affixes in the language are equivalent to each other that is: (a) the suffixes: “-ant, -er/ -or” in English are some occasions equivalent to the prefix: “-pa” and it is variants in Buginese. (b) the suffix: “-eng/ -reng/ -ang/ -ung/ -keng/ -seng” in Buginese, (c) the suffix “-age” in English in some occasions equivalent to the confix: “pa- eng” and it is variants in Buginese, and (4) the suffixes “-ance/ -ence” in English are in some occasions equivalent to the confix “a –eng” and it is variants, ‘pa- eng” and it is variants in Buginese.

The previous findings above have the same approach that the writer will use in this research. That is morphological approach. But, This research is different from the researchers above. Nurbana compared the derivational noun between English and Makassarese using morphological approach. Next, Imran tried to find the process of bound morpheme, and explained how the bound morpheme change the meaning in Konjo dialect. Then, Marnawati aimed to describe the differences and similarities of noun between English and Buginese. Meanwhile, In this research, the writer tries to analyze the verb formation in makassarese and the equivalent affixes of English and Makassarese in verb formation.

B. Definition of Morphology

There are many definitions relating to morphology term. According to Aronoff (2000: 7) linguistics is today defined as the scientific study of language carries with it the implicit claim that a science of language is possible, and this alone

takes many by surprise. While, Bauer (2003: 35) states that morphology is a study of form.

Moreover, O'Grady and Dobrovolsky (1989: 89) explain that morphology is the component of a grammar that deals with the internal structure of words, particularly of complex words.

According to Colin (1967: 376) "Morphology is the branch of the study of Grammars, deals with form of word, affixes and stems. When we speak of characteristics of form, we think of the inflected verbs, nouns, pronouns; we think of the characteristics of suffixes that mark nouns, adjectives, verb and adverbs.

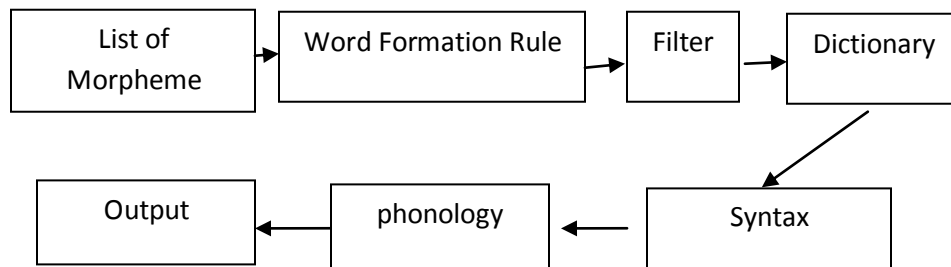
Obviously, in noun-formations, we talk about free morphemes, bound morphemes, derivational and inflectional morphemes, and of the rules of combining them. The rules which determine how morphemes are combined to form new words are called morphological rules.

C. Word-formations through generative morphology

Morris Halle as the first linguist introduced morphology theory based on generative transformation. The model could be illustrated as follows (Scalise, 1984:24).

This model consists of four components, namely 1) list of morpheme, 2) word formation rule, 3) filter, and 4) dictionary. According to Halle, a unit of basic lexicon is morpheme. In the list of morpheme, each morpheme is stated as a unit of

phonological segments and given label parentheses. The second component word formation rule states how the morphemes of a language are arranged in the segments to form the words in the language. Filter component is a mechanism that holds idiosyncrasy found in a language. The words having passed the filter then form a dictionary of related language.



D. Morpheme

Before the writer talks about morpheme, it is very important to present some theories of morpheme in order to clarify what actually morphemes are:

1. "The minimal meaningful unit of language". (Beard. 2000:12)
2. "The smallest meaningful units which may constitute word or parts of words". (Jackson and Amvella. 2004:2).
3. "Morpheme is the smallest difference in the shape of a word that correlates with the smallest difference in word or sentence meaning or in grammatical structure." (Katamba. 2001:24).

Based on the definition above, it can be concluded that a morpheme is the smallest meaningful element of an utterance, having grammatical function of the

language and it can attach to other morphemes. Because of its smallest meaningful units, it cannot be separated into general meaning parts, or it can be said that a morpheme is undivided unit of meaning.

Bloomfield (2005:17) states “Language” mentioned the important ones with his example:

1. The language form which chooses its similar meaning as well as its similar form of phoneme appeared anywhere, is a morpheme. As an example –er in teacher, runner, dancer etc.
2. The language form has equal meaning, but its form or its difference in form is determined by phonological condition, example : -in and –im in indecent as well as imperial.
3. The language form having equal meaning, but different sequence of its phoneme is included morpheme as long as they can form structural sequence, or we may say that their distribution is decided by morphological condition.

Basically, morpheme is divided into two components namely free morphemes and bound morphemes:

1. Free morphemes

According to Weisler (2000:14), free morphemes are those which can stand alone as words of a language. In other words free morphs or free morphemes are those morphemes which can be a word-form when they are isolated.

Mills in Koln (2001:23) gives his example of free morphemes like cat, dog, etc. They are the kind examples of free morpheme. The all words previously stand alone like the definition before.

In word- formations, we know that a free morpheme is a morpheme to which a bound morpheme is possible added, it can be a root, a stem, or a base of derivative.

a. Free morpheme as root

According to Ba'dulu (2008:7), root is a part of a word form that is left when all inflectional and derivational affixes are taken away. In untouchables, for example, the root is touch to which the suffix- able is first added, then the prefix un-, and the last the suffix –s.

A root is a form which is not further analyzable. It is that part of word-form that remains when all inflectional and derivational affixes have been removed (Bauer, 1983:2), for example, the word “disagree” is a free morpheme. It is a derived verb from another verb by prefixing “dis”. When the prefix “dis” is removed, it remains “agree”, which can be analyzed in any kinds. Thus, “agree” is the root of “disagree”, and it is a free morpheme.

Sometimes we have such a word as “disagreement”. This word is a noun derivative or derived noun. When the prefix “dis” and the suffix “ment” are removed, the word “agree” remains in itself. Obviously, the word “agree” is

free morpheme which is the root of either “disagreement”, “disagree”, or “agreement”

The word “disagreement” can be inflected with “s” to indicate plurality as in “disagreements”. The “s” is considered an inflectional suffix. When the inflection “s”, the prefix “dis” and the suffix “ment” are removed at all, the word “agree” is the root of “disagreement”

b. Free morpheme as a stem

According to Dafydd (2006-2007:3), that a stem has lexical meaning, examples, cabbage, happiness, table.

Rasyid (1988: 44) says that a stem is composed of (1) the nucleus, consisting of one or more roots, or (2) the nucleus plus other no root morphemes, except the last structurally added morpheme that consults in a word.

A stem may consist of more than one root, e.g. breakwater, armchair, etc. These two words are derived by combining the roots “break + water” and “arm + chair”. To indicate plurality, we can have “breakwater” and “armchairs”. These two words can be analyzed into “breakwaters/s” and “armchair/s”. The word “breakwater” is the stem of “breakwaters” and “armchair” is the stem of “armchairs”.

A free morpheme can be both a root and stem at a time. The word “touch” is the root and the stem of touch “ed”. However, in “touchable”, “touch” is the stem of touchable.

c. Free morpheme as a base

Mills in Koln (2000: 92) says that a base is a morpheme that gives a word its meaning. This means that any root or any stem can term a base, but the set of bases is not exhausted by the union of the set of roots or the set of the stems. A derivationally analyzable form to which derivational affixes are added can only be referred to as a base. For example, “touchable” act as a base for prefix to form “untouchable”. To distinguish the three terms; root, stem, and base, the following is given an analysis:

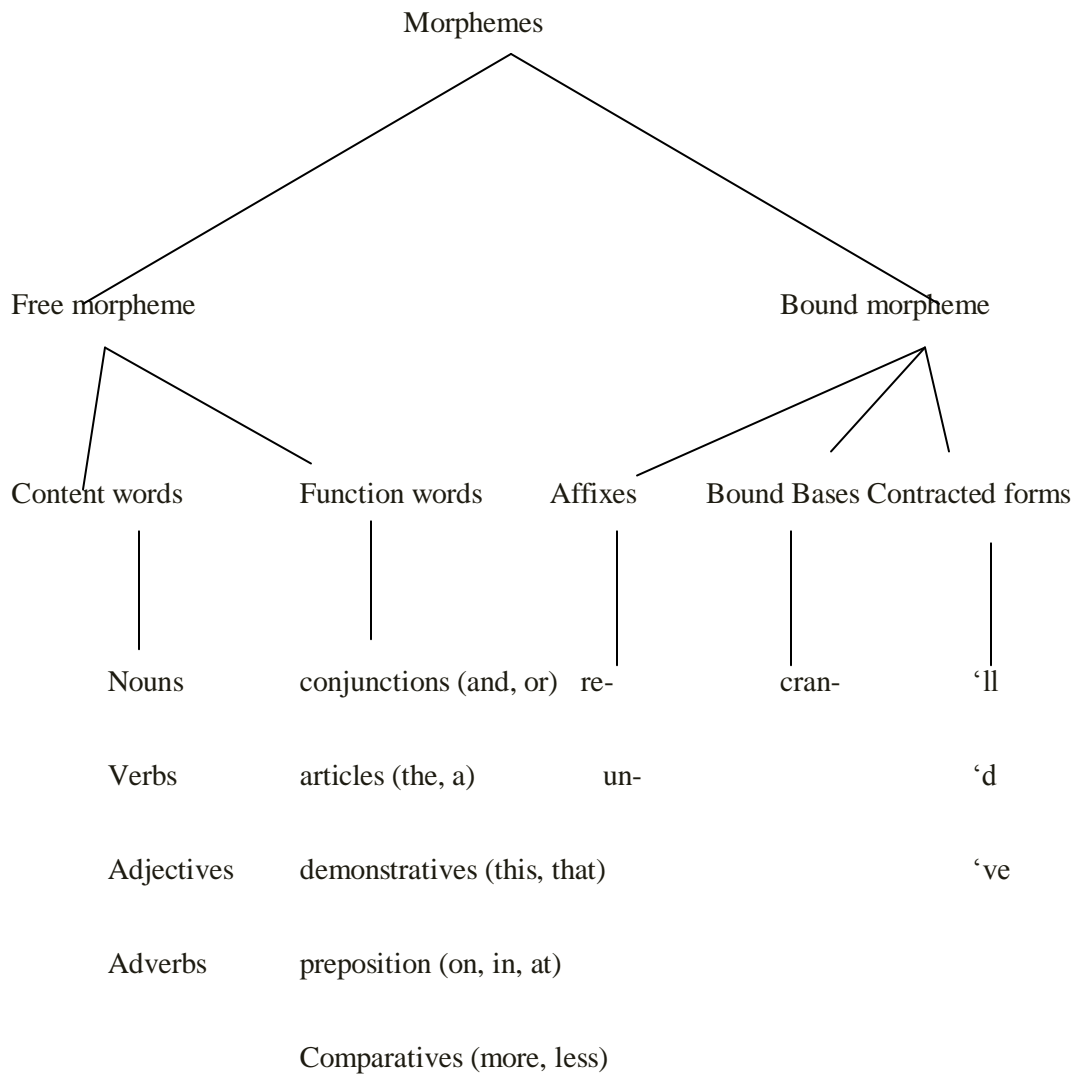
- 1). “touch” is both the root and the stem of “touched”
- 2). “touch” is both the root and the base, not the stem, to form “touchable”
- 3). “touchable” is the base, not the root or the stem to form “untouchable”
- 4). “touchable” is not the root but the stem and the base to form “touchable”.

2. Bound Morpheme

According to Mills in Kolln (2000: 125), bound morpheme is a sound or a combination of sounds that cannot stand alone as a word. Richard in Allen (2001: 74) says that bound morpheme is a word that cannot stand alone as sound.

To clarify the term of morphemes, the writer gives an example in lakiung dialect such as : *lampai* is derived from the root *lampa* as a free morpheme and the suffix *-i* as a bound morpheme. So that we can say that bound morphemes never occur in isolation or cannot stand alone. Bound morphemes include affix which is divided into suffix, prefix, infix and confix.

Akmajian, Demers and Harnish (1984:68) classify all morphemes as follows:



E. An Overview of Makassarese

Makassarese, sometimes also called *bahasa Makassar or Mangkasara'* is a language which used by tribe of Makassar, the citizen of South Sulawesi in Indonesia. This language has its own alphabet which is called Lontara, but nowadays, it is more written in latin alphabet also.

The source of Lontara alphabet is from ancient Brahmi alphabet, India. As many generation of this alphabet, each of its consonant contains alphabet "a" without any sign. And the vocal alphabet is given a sign above, under, in front, or behind of each consonant.

Makassarese is used by the villagers of South Sulawesi as their communication tools. This language is pronounced around two billion people, they are deliver in to some of costal area of Pinrang regency, western part of Pangkep island, western and southern part of Maros regency, Makassar city, Jeneponto regency, Takalar regency, southern part of Bone regency, Bantaeng regency, Bulukumba regency, Selayar regency, south-east part of Sinjai regency. (Adnan Usman, 1999:21)

Makassarese consist of many dialects, some of them can be seen as the writer presents bellow:

1. Lakiung Dialect

This dialect can be seen in Makassar city, western part of Gowa Regency start from Salutoa up to estuary of Jekneberang river, some of Jeneponto regency start from Allu to west, western part of Maros regency, and some costal area of Pinrang regency.

2. Turatea Dialect

This dialect is used by the people who live in Jeneponto regency start from eastern Allu up to frontier of Bantaeng, and then lengthwise to north up to frontier of Malakaji.

3. Bantaeng Dialect

This dialect is used in Bantaeng regency and western costal area Bulukumba.

4. Konjo Dialect

This dialect can be seen in northern part of Pangkep island (mappatuwo,Tabo-tabo to south east across to Ballocci) and passing southern part of Bone regency, eastern part of Gowa regency (Tinggimoncong, and Tompobulu), western part of sinjai regency (mannipi), most of Bulukumba regency up to estern part of kajang.

5. Selayar Dialect

This dialect is used in foreland of Bira, across to Selayar island, cover the area Bontotekne district up to frontier of Layolo village, and then to

Tambolongan island and Pulasi, and most of Jampea island. (Djirong Basang dan Aburaerah Arief, 1981:2)

F. Verb Formation in Makassarese

The formation of verb in makassarese can be formed by addition prefix, suffix, and confix.

1. Prefix

a. Prefix {a-}

Prefix {a-} relates to the people who do something.

Example :

{a-}	+	Root	Derived form
a (s)	+	sare	assare (give)
a (n)	+	tama	antama (go into)
a (n)	+	jari	anjari (become)

b. Prefix {si}

Verb that shows two people do something.

Example :

{si}	+	Root	Derived form
si	+	cinik	sicinic (see each other)
si	+	ngai	singai (like each other)

si + buntuluk sibuntuluk (meet each other)

2. Suffix

Suffix is an affix that follows the element to which is added.

Example:

{i}	+	Root	+	Derived form
-i	+	sare	+	sarei (give him/ her)
-i	+	alle	+	allei (take it)
-i	+	lampa	+	lampai (he has gone)

3. Confix

Confix is two kinds of affix or more from a meaning.

Example:

(Confix)	+	Root	+	Derived form
Am-i	+	malli	+	ammalli (buy)
Am-i	+	mingkung	+	ammingkungi (he is hoeing)
A'-i	+	tindro	+	+a'tindroi (someone is sleeping)

(Basang, and Arief 1981:19).

CHAPTER III

METHODOLOGY OF RESEARCH

A. Research method

This research used descriptive method. It was used to give a description about the analysis of verb formation in Makassarese. The aspects described here are the differences, the similarities, and the types of affixes that are similar in meaning between English and Makassarese in verb formation.

B. Source of Data

The sources of data for this writing thesis used some books that discussing about process of verb formation in Makassarese. Here the writer took notes on all information from the sources. In this case, the writer assembled and note the data required.

C. Instrument of Research

This research used two instrument, these are:

1. Note-taking

The instrument that the writer used in arranging this writing was note-taking. Note-taking is one technique, in which the writer note all information from the source. In this case, the writer assemble and note the data required.

2. Interview

For more secure and valid, the writer collected data through interviewing samples taken from ten people who are native speakers of Makassarese dialect.

The requirement of informant based on the following criteria:

1. Male or female.
2. Understanding both the Indonesian and Makasarese dialect.
3. Informants have a high enough intelligence at least educated Senior High School. (Nida,1963: 11).

D. Procedure of data collection

For procedure of data collection, the writer will do:

1. The writer proposed some questions concerning to the words in Makassarese language.
2. The writer then interviewed and recorded used tape-recording ten people of Makassarese who used lakiung dialect.
3. The writer note bound morpheme of Makassarese verb used by them.

E. Technique of Data Analysis

The data collected from the interview with the native Makassarese dialect and analyzed by Halle's Model in morphological analysis. For more detail about Halle's Model, it is explained in chapter two.

CHAPTER IV

FINDING AND DISCUSSION

A. Findings

The finding of this study consists of verb formation in Lakiung dialect and their functions process in attaching every word in Lakiung dialect.

1. Derivational Affixes

Derivational affixes in Lakiung dialect consists of : prefix, suffix and confix. They attach to the word always based on their rules and their position. These are kinds of affixes in lakiung dialect, they are:

- a. Prefix : si- (sicini'), an-(annulisi'), ang-(angnganre)
- b. Suffix : -i(mempoi), -ki(mentengki'), -ka(bissaka').
- c. Confix : am-i (ammacai), napa-i (napagandengi), a'-i (a'lampai).

The following are the affixation

1) Prefix

a) Prefix *Si-* in lakiung dialect (Data 1)

Prefix	Roots	Become (verb/new verb)
Si-	Ba'ji (v) = fight	Siba'ji = fight each other
	Boya (v) = search	Siboya = search each other
	Buntulu' (v) = to meet	Sibuntulu' = meet each other
	Cini' (v) = to see	Sicini' = see each other

b) Prefix *An-* in lakiung dialect (Data 2)

Prefix	Roots	Become (verb/new verb)
An-	Jama'(V) = work	Anjama' = working
	Nulisi (V) = writing	Annulisi = writing
	Nobo' (V) = stab	Annobo' = is stab
	Nyanggara (V) = frying	Annyanggara' = frying

c) Prefix *ang-* in Lakiung dialect (Data 3)

Prefix	Roots	Become (verb/new verb)
Ang-	Nganre (V) = eat	Angnganre = is eating
	Ngalle (V) = take	Angngalle = is taking
	Ngarru' (V) = cry	Angngarru' is crying

2) Suffix

a) Suffix *-i* in Lakiung dialect (Data 4)

Suffix	Roots / meaning	Become (verb/new meaning)
-I	Mempo (V) =sit	Mempoi = sitting
	Maca(V) = read	Macai = reading
	Tindro(V) = sleep	Tindroi = sleeping
	Cakko(V) = hide	Cakkoi = hiding

b) Suffix *-ka* in Lakiung dialect (Data 5)

Suffix	Roots/ meaning	Become (verb/new meaning)
-Ka	Pilajara'(V) = study	Pilajara'ka = Iam studying
	Langngere'(V) = hear	Langngere'ka = Listen to me
	Barrasa'(V) = wipe	Barrasa'ka = Iam wipes

c) Suffix *-ki* in Lakiung dialect (Data 6)

Suffix	Roots/ Meaning	Become (verb/new meaning)
-Ki	Menteng(V) = stand	Mentengki = he stands
	Tindro(V) = sleep	Tindroki = he sleeps
	Nganre(V) = eat	Nganreki = he eats

3) **Confix**

a) Confix *a'-i* in Lakiung dialect (Data 7)

Confix	Roots/ Meaning	Become (verb/new verb)
A'-i	Lampa(V) = go	A'lampai = going
	Tindro(V) = sleep	A'tindroi = sleeping
	Mingkung(V) = hoe	A'mingkungi = hoeing

b) Confix *napa-i* in Lakiung dialect (Data 8)

Confix	Roots	Become (verb/new verb)
Napa-i	Gandeng(V) = ride	Napagandengi = make something ridden
	Tindro(V) = sleep	Napatindroi = make something sleeps
	Menteng(V) = stand	Napamentengi = make something stand

c) Confix *am-i* in Lakiung dialect (Data 9)

Confix	Roots/ Meaning	Become (verb/new verb)
Am-i	Menteng = stand	Ammentengi = he is stand
	Mekang = fishing	Ammekangi = he is fishing
	Maca = read	Ammacai = he is reading

2. The function and meanings of verb formation in Lakiung dialect

The function of verb formation in Lakiung dialect are formed new other words by changing the meaning, and also part of speech of the word it self. But, there are some of them do not change the category.

Meanwhile, the meaning of verb formation always accordingly to the class and position of words that they were attached. Sometimes the affix has more than two

meanings when it combines to the different from words in the same or different class of the words.

B. Discussion

Only several data are analyzed here, since some data passed the same process in forming verb. Based on Halle's model, the process verb formation in lakiung dialect are:

1. Prefix

a. Prefix *Si-* in lakiung dialect is formed to construct verb

After listing the morphemes, the rules must be formulated based on the data below. The word formulation rules of the data are:

The Word Formation Rule or WFR below shows that the verb formation in Lakiung dialect are formed by adding prefix [si-] to the base. The meaning of the verb that formed in accord with word formation rule below is “**make X**”.

WFR 1: [#Pref [Si-][X] N/V+ #] V

Prefix *Si* in Lakiung means *do it each other*. It can form new verb.

Look at the following examples below :

In the datum 1, the word *Siba'ji* means *fight each other*. *Siba'ji* comes from *ba'ji* word. It has two morphemes, *si* is a prefix or bound morpheme and *ba'ji* is a free morpheme that means *fight*.

Example in sentence :

*Ari **siba'ji** siagang Rudi* (Ari fought with Rudi)

Based on the example above, prefix *si-* in Lakiung dialect which combined with verb *ba'ji* become a new verb *siba'ji*.

The word *Siboya* means *search each other*. *Siboya* comes from *boya* word. It has two morphemes, *si* is a prefix or bound morpheme and *boya* is a free morpheme that means *search*.

Example in sentence :

*Riska and Gogo **siboya*** (Riska and Gogo were searching each other)

Based on the examples above, prefix *si-* in Lakiung dialect which combined with verb *boya* become a new verb *siboya*.

The word *sibuntulu'* means *to meet each other*. *Sibuntulu'* from *buntulu'* word. It has two morphemes, *si* is a prefix or bound morpheme and *buntulu'* is a free morpheme that means *meet*.

Example in sentence :

*Nita **sibuntulu'** siagang Indah ri MP* (Nita meets with Indah in MP)

Based on the example above, prefix *si-* in Lakiung dialect which combined with verb *buntulu'* becomes a new verb *sibuntulu'*.

The word *Sicini'* means *to see each other*. *Sicini'* comes from *cini'* word. It has two morphemes, *si* is a prefix or bound morpheme and *cini'* is a free morpheme that means *see*.

*Ani na Fatima **sicini** riballa 'garring* (Ani and Fatima see each other in the hospital)

After reading the example above, prefix *si-* in Lakiung dialect which combined with verb *cini* becomes a new verb *sicini*.

b. Prefix an- (bound morpheme) if added with word/root (free morpheme) noun or verb, it has meaning “doing activity”.

After listing the morphemes, the rules must be formulated based on the data below. The word formulation rules of the data are:

The Word Formation Rule or WFR below shows that the verb formation in lakiung dialect are formed by adding prefix [an-] to the base. The meaning of lakiung dialect verb that formed in accord with word formation rule below is “**make X**”

WFR 1: [#Pref [An-][X] N/V+ #] V

These mean *doing activity*. It can form new verb.

For examples:

In the datum 2, the word *Anjama* means *work*. *Anjama* come from *jama* word. It has two morphemes, *an* is a prefix or bound morpheme and *jama* is a free morpheme that means *work*.

Example in sentence:

*Ani **anjama** 'ri Fat Dragon* (Ani works in the Fat Dragon)

From the examples above, the writer analyzed that prefix *an-* in lakiung dialect which combined with verb *jama* become a new verb *anjama*.

The word *Annulisi* means *is writing*. *Annulisi* come from *nulisi* word.

It has two morphemes, *an* is a prefix or bound morpheme and *nulisi* is a free morpheme that means *write*.

Example in sentence:

*Adi **annulisi** sura'* (Adi is writing letter)

Based on examples above, the writer analyzed that prefix *an-* in Lakiung dialect which combined with verb *nulisi* become a new verb *annulisi*.

The word *Annobo'* means *is stab*. *Annobo'* come from *nobo'* word. It has two morphemes, *an* is a prefix or bound morpheme and *nobo'* is a free morpheme that means *stab*.

Example in sentence:

*Arman **annobo'** palukka motoro* (Arman stabbed a bike thief)

Based on examples above, the writer analyzed that prefix *an-* in Lakiung dialect which combined with verb *nobo'* becomes a new verb *annobo'*.

The word *Annyanggara*’ means *is frying*. *Annyanggara*’ come from *nyanggara*’ word. It has two morphemes, *an* is a prefix or bound morpheme and *nyanggara* is a free morpheme that means *frying*.

Example in sentence:

Rudy annyanggara’ juku (Rudy is frying fish)

From the data above, the writer analyzed that prefix *an-* in lakiung dialect which combined with verb *nyanggara* becomes a new verb *annyanggara*.

c. Prefix *ang-* (bound morpheme) if added with word/root (free morpheme) noun or verb, it has meaning “doing activity”.

After listing the morphemes, the rules must be formulated based on the data above. The word formulation rules of the data are:

The Word Formation Rule or WFR below shows that the verb formation in Lakiung dialect are formed by adding prefix [*ang-*] to the base. The meaning of the verb that formed in accord with word formation rule below is “**make X**”

WFR 1: [#Pref [Ang-][X] N/V+ #] V

These mean *doing activity*. It can form new verb.

For examples:

In the datum 3, the word *Angnganre* means *is work*. *Angnganre* comes from *nganre* word. It has two morphemes, *ang* is a prefix or bound morpheme and *nganre* is a free morpheme that means *eat*.

Example in sentence:

*Baco **angnganre** taipa* (Baco is eating mango)

From the examples above, the writer analyzed that prefix *ang-* in lakiung dialect which combined with verb *nganre* becomes a new verb *angnganre*

The word *Angngalle* means *is taking*. *Angngalle* comes from *ngalle* word. It has two morphemes, *ang* is a prefix or bound morpheme and *ngalle* is a free morpheme that means *take*.

Example in sentence:

*Adi **angngalle** bo'bo ri balla'na Aco* (Adi takes a book in Aco's house)

Based on examples above, the writer analyzed that prefix *ang-* in Lakiung dialect which combined with verb *ngalle* becomes a new verb *angngalle*.

The word *Angngarru'* means is *cry*. *Angngarru'* comes from *ngarru'* word. It has two morphemes, *ang* is a prefix or bound morpheme and *ngarru* is a free morpheme that means *cry*.

Example in sentence:

Ica angngarru nasaba tappelaki doe'na (Ica was crying because her money is loss)

Based on examples above, the writer analyzed that prefix *ang*-in Lakiung dialect which combined with verb *ngarru* becomes a new verb *angngarru*.

2. Suffix

- a. Suffix *i-* (bound morpheme) if added with roots (free morpheme) verb, it has imperative meaning.

After listing the morphemes, the rules must be formulated based on the data above. The word formulation rules of the data are:

The Word Formation Rule or WFR below shows that the verb formation in lakiung dialect are formed by adding suffix [-i] to the base. The meaning of the verb that formed in accord with word formation rule below is “**make X**”

WFR 1: [# [X][-i]suffix N/V+ #] V

Verb can be derived in Lakiung dialect by adding the suffix *-i* to the root. If added with words, it has imperative meaning.

Let's look the example :

In the datum 4, the word *Mempo* means *sitting*. There were two morphemes *-i* and *mempo*. *-i* is suffix and *mempo* a free morpheme that means *sit*.

Examples in sentences:

*Budi **mempo**i riampi'na Mery* (Budi was sitting in beside Mery)

Based on examples above, the writer analyzed that suffix *-i* in Lakiung dialects which combined with verb *mempo* becomes a new verb *mempo**i*.

The word *Macai* means *is reading*. There were two morphemes *i* and *maca*. *i* is suffix and *maca* a free morpheme that means *read*.

Examples in sentences:

*Nita **macai** sura' kabara'* (Nita was reading newspaper)

Based on examples above, the writer analyzed that suffix *-i* in Lakiung dialects which combined with verb *maca* becomes a new verb *macai*.

The word *Tindroi* means *is sleeping*. There were two morphemes *i* and *Tindro*. *i* is suffix and *tindro* is a free morpheme that means *sleep*.

***Tindroi** Atry nasaba garringngi* (Atry was sleeping because of sick)

Based on example above, the writer analyzed that suffix *-i* in Lakiung dialect which combined with verb *tindro* becomes a new verb *tindroi*.

The word *Cakkoi* means *is hiding*. There were two morphemes *i* and *cakko*. *i* is suffix and *cakko* a free morpheme that means *hide*.

Example in sentence:

Imran cakkoi siagang andi'na (Imran was hiding with his sister)

Based on the example above, the writer analyzed that suffix *-i* in Lakiung dialect which combined with verb *cakko* become a new verb *cakkoi*.

- b. suffix *-ka* (bound morpheme) if added with roots (free morpheme) verb, it has meaning that someone is do something.**

After listing the morphemes, the rules must be formulated based on the data above. The word formulation rules of the data are:

The Word Formation Rule or WFR below shows that verb formation in lakiung dialect are formed by adding suffix *[-Ka]* to the base. The meaning of the verb that formed in accord with word formation rule below is “**make X**”

WFR 1: [# [X][*-Ka*]suffix N/V+ #] V

Suffix *-ka* if added with words verb, it has meaning that something should show on subject/speakers.

In the datum 5, the word *Pilajaraka* means *I am studying*. There were two morphemes *ka* and *pilajara*. *Ka* is suffix and *pilajara* a free morpheme that means *study*.

Example in sentence:

Pilajaraka' *bahasa mangkasara* (I am studying makassar language)

Based on the example above, the writer analyzed that suffix *-ka* in Lakiung dialect which combines with verb *pilajara* becomes a new verb *pilajaraka*.

The word *Langngere'ka* means *listen to me*. There were two morphemes *ka* and *langngere'*. *Ka* is suffix and *langngere'* is a free morpheme that means *listen*.

Langngereka *tau akkelong* (I hear people sing)

The writer analyzed that suffix *-ka* in Lakiung dialect which combined with verb *langngere* becomes a new verb *langngereka*.

The word *Barrasa'* means *is wipe*. There were two morphemes *ka* and *barrasaka'*. *Ka* is suffix and *barrasa'* a free morpheme that means *wipe*.

Example in sentence:

Barrasaka' *ri dallekang balla'ku* (I am wiping in front of my house)

From the examples above, the writer analyzed that suffix *-ka* in Lakiung dialect which combine with verb *barrasa* ' become a new verb *barrasaka* '.

- c. **Suffix *-ki* (bound morpheme) if added with roots (free morpheme) verb it has meaning invite**

After listing the morphemes, the rules must be formulated based on the data below. The word formulation rules of the data are:

The Word Formation Rule or WFR below shows that the verb formation in lakiung dialect are formed by adding suffix [-Ki] to the base. The meaning of the verb that formed in accord with word formation rule below is “**make X**”

WFR 1: [# [X][-Ki]suffix N/V+ #] V

Suffix *-ki* if added with words verb, it has meaning that when someone doing activity.

For examples:

In the datum 6, the word *Mentengki* means *he/she stands up*. There were two morphemes *ki* and *menteng*. *Ki* is suffix and *menteng* a free morpheme that means *stand up*.

Example in sentence:

***Mentengki** nasaba nia tau ero ammempo* (stand up please because there is someone going to sit)

Based on example above, the writer analyzed that suffix *-ki* in Lakiung dialect which combined with verb *menteng* becomes a new verb *mentengki*.

The word *Tindroki* means *he/ she sleeps*. There were two morphemes *ki* and *tindro*. *-ki* is suffix and *tindro* is a free morpheme that means *Sleep*.

Example in sentence:

Tindroki *ri kasuru* ' (Sleep on the bed)

Based on example above, the writer analyzed that suffix *-ki* in Lakiung dialect which combined with verb *tindro* becomes a new verb *tindroki*.

The word *Nganreki* means *he/ she eats*. There were two morphemes *ki* and *nganre*. *-ki* is suffix and *nganre* is a free morpheme that means *eat*.

Example in sentence”

Nganreki *anne kanre jawa* (*eat this cake*)

The writer analyzed that suffix *-ki* in Lakiung dialect which combines with verb *Nganre* becomes a new verb *Nganreki*’.

3. Confix

- a. *Confix a'-i* (bound morpheme) if added with roots (free morpheme) noun or verb, it has meaning doing activity.

After listing the morphemes, the rules must be formulated based on the data above. The word formulation rules of the data are:

The Word Formation Rule or WFR below shows that the verb formation in Lakiung dialect are formed by adding confix [A'-i] to the base. The meaning of the verb that formed in accord with word formation rule below is “**make X**”

WFR 1: [# [A'] [X] confix [-i] N/V+ #] V

Confix *a'-i* in Lakiung dialect if added with roots verb, it has doing activity meaning that have been done.

Let's see for examples below:

In the datum 7, the word *A'lampai* means *going*. It consisted of three morphemes *a'*, *lampa* and *i*. *A'* and *i* are bound morphemes that did not have meaning and *lampa* itself means *go*.

Examples in sentences:

Ilham a'lampai mange balla'garring (Ilham is going to the Hospital)

From the example above, the writer analyzed that confix *a'-i* in Lakiung dialect which combined with verb *lampa* becomes a new verb *a'lampai*.

The word *A'tindroi* means *he is sleeping*. It consisted of three morphemes *a'*, *tindro* and *i*. *A'* and *i* are bound morphemes that did not have meaning and *tindro* it self means *sleep*.

Example in sentence:

Fandi a'tindroi ri ballakku (Fandy was sleeping in my home)

from the example above, the writer analyzed that confix *a'-i* in Lakiung dialect which combined with verb *tindro* becomes a new verb *a'tindroi*.

The word *A'mingkungi* means *someone is hoeing*. It consisted of three morphemes *a'* *mingkung* and *i*. *A'* and *i* are bound morphemes that did not have meaning and *mingkung* itself means *hoe*.

Example in sentence:

Arul a'mingkungi ri sawaya (Arul is hoeing in the fields)

From the examples above, the writer analyzed that confix *a'-i* in Lakiung dialect which combined with verb *mingkung* becomes a new verb *a'mingkungi*.

- b. confix *napa-i* (bound morpheme) if added with words (free morpheme) noun or verb, it has meaning that make something become.

After listing the morphemes, the rules must be formulated based on the data above. The word formulation rules of the data are:

The Word Formation Rule or WFR below shows that the verb formations in Lakiung dialect are formed by adding confix [Napa-i] to the base. The meaning of the verb that formed in accord with word formation rule below is “**make X**”

WFR 1: [# [Napa][X]confix[-i] N/V+ #] V

Confix *napa-i* (bound morpheme) if added with words/root (free morpheme) verb, it has meaning that make something become.

For examples:

In the datum 8, the word *Napagandengi* means *make something ridden*. It consisted of three morphemes *na*, *gandeng* and *i*. *Napa* and *i* are bound morphemes that did not have meaning and *gandeng* itself means *ride*.

Examples in sentence:

Napagandengi motoro 'na berasa (his motorcycle is ridden rice)

From the example above, the writer analyzed that confix *napa-i* in Lakiung dialect which combined with verb *gandeng* becomes a new verb *napagandegi*.

The word *Napatindroi* means *make something sleeps*. It consisted of three morphemes *na*, *tindro* and *i*. *Napa* and *i* are bound morphemes that did not have meaning and *tindro* itself means *sleep*.

Example in sentence:

*Ammakku **napatindroi** andikku* (My mother makes my young brother sleeps)

After given example above, the writer analyzed that confix *napa-i* in Lakiung dialect which combined with verb *tindro* becomes a new verb *napatindroi*.

The word *Napamentengi* means *make something stand*. It consisted of three morphemes *na*, *menteng* and *i*. *Napa* and *i* are bound morphemes that did not have meaning and *menteng* itself means *stand*.

Example in sentence:

*Adi **napamentengi** sapedana andi'na* (Adi make bicycle young brother stand)

From the example above, the writer analyzed that confix *napa-i* in Lakiung dialect which combine with verb *menteng* become a new verb *napamentengi*.

- c. Prefix *am-i* (bound morpheme) if added with roots (free morpheme) noun or verb, it has meaning doing activity.

After listing the morphemes, the rules must be formulated based on the data above. The word formulation rules of the data are:

The Word Formation Rule or WFR below shows that the verb formations in lakiung dialect are formed by adding confix [Am-i] to the base. The meaning of Lakiung dialect verb that formed in accord with word formation rule below is “**make X**”

WFR 1: [# [Am-][X]confix[-i] N/V+ #] V

Confix *am-i* in Lakiung dialect

Confix *am-i* (bound morpheme) if added with words (free morpheme) verb, it has doing activity meaning.

Let's look the examples:

In the datum 9, the word *Ammmentengi* means *stand*. It consisted of three morphemes *am*, *menteng* and *i*. *Am* and *i* are bound morphemes that did not have meaning and *Menteng* itself means *stand*.

For examples in sentence:

Ammmentengi Rian siagang Ratna (Rian was standing with Ratna)

After given example above, the writer analyzed that confix *am-i* in Lakiung dialect which combined with verb *menteng* becomes a new words *ammentengi*.

The word *Ammekangi* means *is fishing*. It consisted of three morphemes *am*, *mekang* and *i*. *Am* and *i* are bound morphemes that did not have meaning and *mekang* itself means *fishing*.

Example in sentence:

Budi ammekangi ri binangaya (Budi is fishing in the river)

After given example above, the writer analyzed that confix *am-i* in Lakiung dialect which combined with verb *mekang* becomes a new words *ammekangi*.

The word *Ammacai* means *is reading*. It consisted of three morphemes *am*, *maca* and *i*. *Am* and *i* are bound morphemes that did not have meaning and *maca* itself means *read*.

Example in sentence:

Fery ammacai majalah (Fery is reading magazine)

After given examples above, the writer analyzed that confix *am-i* in Lakiung dialect which combined with verb *maca* becomes a new words *ammacai*.

CHAPTER V

CONCLUSION AND SUGGESTION

A. CONCLUSION

After discussing some problems in previous chapter, now the writer comes to the conclusion as follows :

1. The part of bound morpheme in Lakiung dialect consist of prefix, suffix and confix. Prefix Si-, la-: they are derivation of word formation, and it is class maintaining. prefix a- : it is inflectional and it is marker of progressive. Suffix -I, -ka, -ki : they are derivational and it is class maintaining. Confix am-I is derivational and it is class maintaining. And confix napa-i, ak-i : they are derivational class changing.
2. In makassere, especially Lakiung dialect in verb if adding of affixation such us prefix, suffix and confix change the word meaning.

B. SUGGESTION

By the completion of this thesis, the writer realizes that this thesis still contains many lacks. Based on these lacks, the writer would like to present some suggestions as follows :

1. There are a lot of aspects in Lakiung dialect that need observing and examined, therefore the writer suggests if the experts, especially those originated from the area of Takalar, are willing to prepare themselves, to make an effort on this dialect observasion, as a proof that Lakiung dialect can also be scientifically analized.

2. The writer realizes that this thesis far from beings complete, therefore criticism and corrections for the improvement of this work are very much welcomed.

BIBLIOGRAPHY

- Alwasilah, Chaedar. 1993. *Linguistik Suatu Pengantar*. Bandung: Angkasa.
- Aronoff, M. 2000. *Morphology By Itself*. Cambridge, MA: MIT Press.
- Ba'dulu, Abdul Muis. 2008. *Introduction to Linguistics*. Fakultas Bahasa dan Seni, Universitas Negeri Makassar.
- Bauer, L. 2003. *Introducing Linguistic Morphology*. (2nd edition). Edinburgh: University Press.
- Basang, Djirong. Arif, Aburarerah. 1981. *Struktur Bahasa Makassar*. Jakarta: Pusat Pembinaan dan Pengembangan Pendidikan dan Kebudayaan.
- Beard, Robert. 2000. *Lexeme-Morpheme Base Morphology*. New York: State University of New York Press.
- Bloomfield, Leonard. 2005. *Language*. Delhi: Jainendra Prahash Jain at Shri Jainendra Press
- Boij Geert. 2005. *The Grammatical of Words an Introduction to Linguistic Morphology*. Oxford: Oxford University press.
- Crystal, David J. 1980. *A first Dictionary of Linguistics and Phonetics*. London: Andre Deutsch.
- Dulay, Heidi, et al. 1982. *Language Two*. New York and Oxford: oxford university press.
- Fromkin, Victoria and Rodman, Robert. 1983. *Introduction to Language*. New York: Hall, Rinehart, and Winston
- Gustaaf Manuputty, David, 1999. *Pragmatik Terapan Dalam Bahasa Makassar Dialek Lakiung*. Departemen Pendidikan dan Kebudayaan Pusat Pembinaan dan Pengembangan Bahasa Balai Penelitian Bahasa di Ujung Pandang.
- Jackson, Howard and Etienne Ze Amvela. 2004. *Words, Meaning and Vocabullary: An Introduction to Modern English Lexicology*. Linguistics series
- Keraf, Gorys. 1994. *Diksi dan Gaya Bahasa*. Jakarta: PT Gramedia Pustaka Umum.
- Lado, R. 1975. *Linguistic Across Cultures*. Ann Arbor: the University of Michigan press.

- Mills, Kirsten in Koln. 2000. *Understanding English Grammar*. 5th edition. San Diego: Harcourth Brae Joanovik College Publisher.
- M. Chaedar Al-wasilah. 1983. *Linguistic Suatu Pengantar*. Bandung: Angkasa.
- Nida, Eugene. 1963. *Morphology: A Descriptive Analysis of Word*. Ann Arbor: University of Michigan press.
- O' Grady, William dan Michael Dobrovolsky. 1989. *Contemporery Linguistics*. New York: St. Martin Press.
- Rasyid, Muhammad Amin and Lapassa. 1988. *Morphology to Syntax*. Ujung Pandang.
- Usman, Adnan., et al. 1999. *Bunga Rampai, Hasil Penelitian Bahasa dan Sastra II*. Makassar: Balai Bahasa Pusat Pembinaan dan Pengembangan Bahasa Departemen Pendidikan dan Kebudayaan.

BIOGRAPHY



Arfandi Rani or usually called Fandi was born on January 06, 1987 in Bone as the third of four children. Child from the couples Abd. Malik Rani and Harlina completed his Elementary School at SDN 1 Tumpas in Kendari and graduated in 2000. And then he entered into Junior High School 2 Takalar, graduated in 2003. He continued his study in Senior High School 1 Unaaha, Konawe Kendari and graduated in 2006.

On his return from the program, he was interested in studying English, hoping to go abroad. His interest in languages made him take the Department of English and Literature at the State Islamic University Alauddin Makassar.

APPENDIX

CONVERSATION 1

- A : Namanya siapa Bu?
- B : Dg. Mawara'
- A : Umurnya berapa?
- B : 25 tahun
- A : Pekerjaan Ibu sekarang, apa Bu?
- B : Staff desa
- A : Sebelumnya saya ingin bertanya Bu tentang Bahasa Makassar.
- B : O iye..
- A : Mm...klo tidur bahasa Makassaranya apa Bu?
- B : *Tinro*.
- A : Kalo sedang tidur?
- B : *A'tinro*.
- A : Kalo "dia sedang tidur"?
- B : *A'tinroi*.
- A : Ibu bisa berikan contoh kalimatnya dalam bahasa Makassar?
- B : *I Joni a'tinro ri kamaraka*.
- A : Bahasa Indonesianya apa itu Bu?
- B : Joni sedang tidur di kamar.
- A : Oo...kalo "makan", bahasa Makassaranya apa Bu?
- B : *Nganre*..
- A : Kalo "sedang makan"?
- B : *Angnganre*.
- A : Kalo..."saya sedang makan"?
- B : *Angnganrea'*.
- A : *Angnganrea'*? Oo...bisa Ibu berikan contoh kalimatnya?

B : *“Angnganrea’ juku’ kalotoro’ ri subangngi”*.

A : Bahasa Indonesianya apa itu Bu?

B : “Saya makan ikan kering kemarin”.

A : Oo..Bahasa Makassaranya “membaca” apa Bu?

B : *Ammaca*.

A : Oo...kalo “sedang membaca”?

B : *Ammacai*.

A : Dia sedang membaca?

B : Iye.

A : Oo...Kalo contoh kalimatnya Bu? Bisa berikan contoh kalimatnya?

B : *“Ammacai sura’ kabara’ ri balla’na”*.

A : Selanjutnya, bahasa Makassaranya “menyapu” apa?
Menyapu..menyapu..bahasa Makassaranya “menyapu”?

B : *Barrasa’*.

A : Kalo “saya sedang menyapu”?

B : *“Barrasa’ka”*.

A : Contoh kalimatnya dalam bahasa Makassar apa Bu?

B : *“Barrasa’ka ri dallekang balla’ku”*.

A : Oo..iya, terima kasih Bu yah.

B : Iye.

CONVERSATION 2

A : Sebelumnya..namanya siapa Bu?

B : Saya..Aisyah Dg. Bau’.

A : Aisyah Dg. Bau. Umurnya berapa Bu?

B : Umurnya..50 sekarang.

A : 50 Bu?

B : Iye.

A : Pekerjaannya apa Bu?

B : Di sini, staff desa.

A : Staff desa Bu di'?

B : Iye.

A : Mmm..saya mau tanya tentang bahasa Makassar Bu.

B : Iya..iya.

A : Bahasa Makassar kalo “lihat” itu apa Bu? Melihat...

B : Lihat itu, ee..*cini*’, *accini*’ toh. Kalo *sicini*’ itu baku lihat.

Artinya itu, dua orang bertatap muka ya, saling ketemu.

Taruhlah misalnya kita janjian di suatu tempat, artinya kita baku liat pada waktu itu.

A : Oo iya, kalo misalnya anu Bu..

ee,,”menulis”, bahasa Makassar “menulis”?

B : Tulis, tulis itu kata dasarnya kan baru dapat alasan “me”..menulis.

Bahasa Makassar “*angngukiri*”.

A : *Angngukiri*’?

B : Bukan “*annulisi*’.

A : Oo bukan “*annulisi*” Bu?

B : Bukan, “*angngukiri*”. Kalo “*annulisi*” itu samaji..

Bahasa Indonesia sebenarnya itu Cuma dipoleski sedikit.

Angngukiri’ artinya menulis.

A : Oo iya Bu..

Kalo menggoreng?

B : Menggoreng..dari kata dasar “goreng” ya?

Menggoreng “*Anynyanggara*”.

A : Kalo “goreng”?

B : Kalo “goreng” ..*sanggara*’.

A : *Sanggara*’?

B : A a..*sanggaraki anjo anua*.

Taruhlah misalnya, *sanggaraki anjo jukuka*, goreng itu ikan.

Beda kalo dibilang “menggoreng”. Saya sedang menggoreng ikan toh...

Artinya beda dengan,, taruhlah misalnya ada kata perintah.

“Goreng itu ikan”!!

Beda kalo saya bilang, “Indah sedang menggoreng ikan”.

Kan beda.

A : Bahasa Makassaranya itu apa Bu?

B : Bahasa Makassaranya, “*Indah anynyanggaraki juku*”.

Beda kalo sy bilang “*sanggaraki anjo juku’ka Indah*”.

Kan ada perintah di situ, tapi pada dasarnya samaji kan menggoreng.

A : Oo iya.

B : Begitu.

A : Kalo bahasa Makassaranya “membaca”?

B : Membaca...baca kan? Membaca..”*ammaca*”.

A : “*Ammaca*”? Kalo “sedang membaca”?

B : Kalo sedang membaca, artinya “*ammacai*”.

Taruhlah misalnya, apa napare’? “*ammacai buku*”.

A : Oo iya..Kalo berdiri?

B : Berdiri..”*ammenteng*”.

A : “*Amenteng*”? Kalo “sedang berdiri”?

B : Sedang berdiri, “*ammentengi*”.

A : “*Amentengi*”? Kalo contoh kalimatnya Bu?

B : Apa itu?

A : Contoh kalimatnya, berdiri “*ammenteng*”.

B : Taruhlah misalnya, “*Inakke ammentenga ri dallekanta*”.

Artinya kan kita mau pidato ceritanya ini, ada prakata begitu kan.

“*inakke ammentenga ridallekanta*” artinya saya sedang berdiri

Dihadapan Bapak-bapak.

A : Oo iya, Kalo “memancing”?

B : Memancing “*ammekang*”.

A : *Ammekang*?

B : Iya..

A : “sedang memancing”?

B : Sedang memancing, “*ammekanga*””. Pake lagi akhiran *a*.

A : Oo iya Bu..Kalo “pergi” bahasa Makassaranya apa Bu?

B : *A’lampa*.

A : Kalo “dia sedang pergi”?

B : “dia sedang pergi”..*a’lampai*.

A : *A’lampai*?

B : Iya..

A : Oo..

B : Pasti ada kata tambahan di akhiran kata kalo dia sedang.

Misalnya, *a’lampa*..*a’lampai*, *ammekang*..*ammekangi*.

A : Padahal kata dasarnya itu “*lampa*” pergi Bu di’.
Jadi karena dia bilang *a’lampai* berarti bukan lagi *lampa*.

B : Iya..*a’lampai* jadi dia sedang pergi.

A : Dia sedang pergi, *a’lampai* ada tambahan *i* di belakangnya.

B : Iya..

A : Kalo mencangkul Ibu?

B : Mencangkul..*a’mingkung*.
Samaji kalo dia sedang mencangkul..*a’mingkungi*.

A : *A’mingkungi*?

B : Iya..

A : Kalo anu Bu “mengambil”?

B : *Angngalle*..

A : *Angngalle*..

B : Kalo dia sedang mengambil, “*angngallei*”.

A : *Angngallei*? Contoh kalimatnya Bu?

B : Taruhlah misalnya, *Indah kusuroi angngallei anjo mange kayua*.

A : Iya..bahasa Indonesianya apa itu Bu?

B : Saya suruh Indah mengambil kayu itu.

A : Kalo anu Bu..menyapu?

B : Menyapu, *a’barrasa*’.

A : *A’barrasa*’. Kalo sedang menyapu?

B : Sedang menyapu, *a’barrasaki*.

A : Kalo menangis Ibu?

B : *Angngarru*’. Sedang menangis “*angngarruki*”.

A : *Angngarruki*..hampirji sama semua Bu di’?

B : Iya..
A : Kalo dia dapat awalan, akhiran.
B : Ditambah saja akhiran, ada *a* ada *i*.
A : Tapi termasuk kata kerjaji semua Bu di’?
Cuma penambahannya saja yang berbeda.
B : Iya..kayakji sebenarnya bahasa Indonesia.
Sedikit dipoles jadi lain artinya, samaji bahasa Makassar.
A : Oo..samaji di’?
B : Kalo ada tambahna berarti lebih terurai artinya kan.
A : Makasih Bu..
B : Iya..

CONVERSATION 3

A : Namanya siapa Pak?
B : Ibrahim AR.
A : Umurnya berapa Pak?
B : 52
A : Pekerjaan sekarang?
B : Sekertaris desa.
A : Oo..sekertaris desa.
B : Status PNS.
A : Oo...PNS Pak di’?
B : Iya
A : Saya mulai Pak di’ bertanya.
B : Mmm..

A : Ini saya mau tanya tentang bahasa Makassar, misalnya bahasa
Makassarnya itu ee..berdiri Pak apa? "*Menteng*"?

B : "*Menteng*" iya betul.

A : Kalo dia sedang berdiri?

B : ee..*ammentengi*.

A : *Amentengi*?

B : Iya.

A : Kalo berdiri saja?

B : Berdiri, berdiri..sementara berdiri berarti pernah duduk.
Kalo berdiri kan mulai masuk sudah berdiri memang dia.

A : Bahasa Makassarnya tetap "*menteng*"?

B : "*menteng*" tetap "*menteng*".

A : Kalo itu ada bahasa Makassar biasa saya dengar "*napagandengi*"
Itu artinya apa Pak..bahasa Indonesianya itu? "*napagandengi*".

B : "*napagandengi*"? itukan bahasa anunya itu kan "membonceng".
aa..yang dianukan itu apa dibonceng? Aa apa *nagandeng*?
Ada kegiatan di situ, ada hubungannya kalo dikatakan *pagandeng*.
Sama kalo *gandeng*, ada orang lewat toh kita lihat ee *bonceng* anu apa.
Ee *bonceng* keranjang, *Oo..a'gandengi karanjeng*.

A : Oo..

B : Begitu iya.

A : Contoh kalimatnya tadi Pak itu di'?

B : Iya..

A : Kalo tidur Pak itu kan ada juga saya bilang hampir sama dengan itu tadi
Napagandengi..napatinroi.

B : Aa kalo dibahasakan *patinro* kayaknya anak-anak, anak-anak itu dikasi tidur. Kalo orang dewasa kayak saya ini mau tidur, tidur saja. *Attinro*.

A : *attinro*?

B : Mmm..kalo ditidurkan anak-anak itu.

A : Oo..kalo anu Pak, apa..ee menikam, bahasa Makassar nya menikam?

B : Menikam..*annobo* '. Aa kegiatan juga yang anu itu.

A : Dia termasuk kata kerja Pak di'?

B : Iya..selalu berhubungan dengan kata kerja itu.

A : Iya..kebetulan saya bahas ini tentang kata kerja.

B : Mmm..betul itu.

A : Kalo sedang menikam Pak?

B : Aa..*nnoboki*. Itu kegiatan yang sudah terjadimi itu.

A : Oo..

B : *Nnobo* ' belum ada itu anu tapi kalo menikam sudah adami terjadimi.

A : Terjadimi..

B : Mmm..

A : Bahasa Makassar nya itu, *Annobo* 'ki?

B : *nnoboki*, *nnoboki tau*.

A : Oo..

B : Menikam orang.

A : Oo iya Pak.

B : Aa begitu..

A : Kalo mendengar Pak?

B : *Langngere* '.

A : *Langngere'*..kalo saya sedang mendengar?

B : Aa kalo saya bicara ini kan Anda yang mendengarkan.
Aa nakke accarita kau langngereki.

A : *Langngereki*..kalo misalnya *langngere'ka* apa bedanya *langngere'ki*
Dengan *langngere'ka*?

B : *langngere'ki ngasseng anjo kupaua to dibahasakangngi langngere'ki,*
Langngereki sa'rangku pau kana kamma enne.

A : Oo begitu Pak di'?

B : Mmm..*langngereki sa'rangku, langngereki paungku, caritangku to.*
Langngereki caritangku.

A : Artinya itu Pak?

B : Mendengar cerita saya, *langngere'.*

A : Kalo mencari Pak..mencari.

B : *A'boya.*

A : *A'boya..*

B : *A'boya, cari. Apa mucari? Apa nuboya?*

A : Kalo saling mencari?

B : Aa..*siboyai.*

A : *Siboyai..*

B : Aa baku cari itu, *assiboya.* Kalo *a'boya* sendiri yang cari sesuatu toh.
Tapi kalo orang baku cari mau ketemu itu, jadi *siboyai.*
Begini, *assiboyai.*

A : Kalo berkelahi Pak, berkelahi?

B : *Siba'ji.*

A : *Siba'ji?*

B : Mmm..baku adu itu kekuatan.

A : *Assiba'ji*..

B : *Assiba'ji*..kalo *Amma'ji* dia itu orang anu itu, dia pukul sendiri orang.
Kalo *siba'ji* baku adui.

A : Orang yang baku berkelahi begitu.

B : Iya..berkelahi, iya. Berkelahi itu dua orang. Lebih dari satu orang kalo berkelahi. Sama juga kalo memukul, *mma'ji tau*. *Amma'ji*, dia pukul orang. *Amma'ji* itu artinya dia pukul orang. Kalo *siba'ji* artinya dia berkelahi.

A : Kalo kerja Pak? Kerja.

B : *Anjama*..

A : *Anjama*?

B : Iya kerja, *anjama*.

A : Kalo sembunyi?

B : *Cakko*.

A : *Accakko*?

B : *Cakko*..C

A : *Cakko* pak di'?

B : Iya, *cakko*.

A : Itu biasa Pak kalo misalnya *pilajara'* dia pake tanda petik ato pake K.
Pilajarak ato...

B : *Pilajara'* nda' ada K nya.

A : Nda' ada pake K di'?

B : Mmm...*pilajara'*. Bebaski di depannya itu, *pilajara'*. Tidak ada huruf yang dianu.

A : Kalo duduk Pak..bahasa Makassaranya duduk?

B : *Ammempo.*

A : *A'mempo?*

B : *Ammempo, am..mempo.*

A : Oo..kalo *mempo*?

B : *mempo*, duduk.

A : Duduk?

B : Mmm...

A : Kalo itu *a'lampa* Pak, *a'lampai*.

B : *a'lampai*, pergi.

A : Itu ada tanda petik sebelumnya *a* dengan *lampa* ato pake *k*, *aklampai* ato *a'lampai*?

B : *lampai, lampai*..bebas *a'lampai*.

A : Ato dobel L, *allampai*?

B : *lampai* begini. Jadi kalo orang sudah pergi *lampai*, begini *lampai*.
A'lampai. Bisa juga tidak ada ini *lampai*. Tp biasanya ada kayak huruf
a keluar sebelumnya ini *a'lampai* tapi ini yang harus ini, pergi.

A : Tapi dia tetap ada tanda petik di atasnya Pak?

B : Iya...

A : Oo iya Pak, terima kasih Pak di'.

B : Sama-sama.

CONVERSATION 4

A : Maaf, namanya siapa Ibu?

B : Sumarni.

A : Tinggalnya dimana?

B : Takalar.

A : Umurnya berapa Bu?

B : 32

A : Pekerjaannya apa Bu?

B : Ibu Rumah Tangga.

A : Oo..Ibu Rumah Tangga ya?

Saya mau bertanya tentang Bahasa Makassar. Bahasa Makassar
“bekerja” apa Bu?

B : *Anjama*.

A : *Anjama*? Kalo dia sedang bekerja?

B : *Anjamai*..

A : *Anjamai*...Ibu bisa berikan contoh dalam Bahasa Makassar?

B : *Anjama' riballa*.

A : Oo..artinya apa itu Bu?

B : Ibu rumah tangga.

A : Oo..kalo Bahasa Makassar tidur Bu?

B : *Tinro*.

A : Kalo dia sedang tidur?

B : *Tinroi*.

A : *Tinroi*? Bisa berikan contoh kalimatnya juga?

B : *Attinroi ri balla'na anakku*.

A : *Attinroi ri balla'na anakku*. Bahasa Indonesianya apa itu Bu?

B : Tidurka di rumahnya anakku.

A : Bahasa Makassar kalo “menggoreng”?

B : *nyanggara*’.

A : *Nyanggara*’? Kalo dia sedang menggoreng?

B : *Nyanggar*.

A : Sama Bu ya, *nyanggar* dengan *nganggara*’?

B : Iya.

A : Oo..Ibu bisa berikan contoh kalimatnya?

B : *Nyanggaraka kaddokang ri balla*’.

A : Artinya apa itu Bu?

B : Saya menggoreng lauk di rumah. Makanan.

A : Oo..Makanan. Makasih Bu yah.

B : Iya.