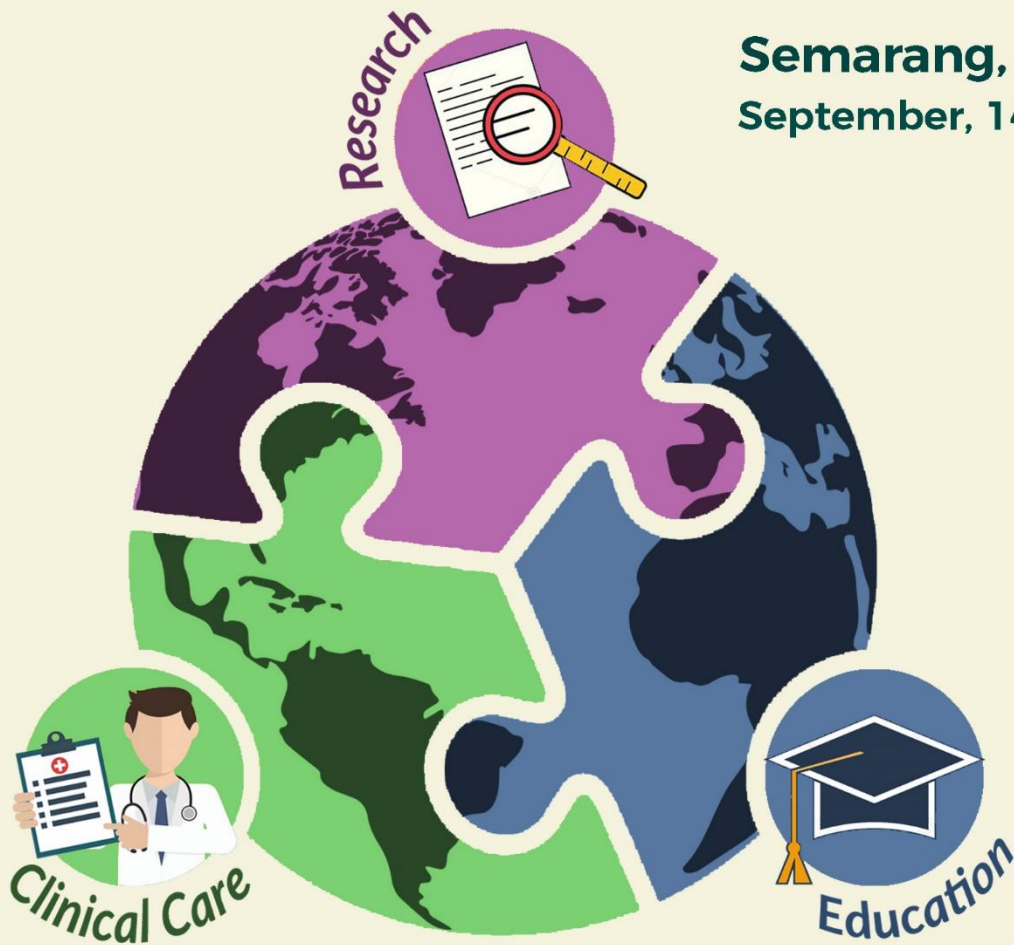




PROCEEDING

**2ND INTERNATIONAL CONFERENCE ON TRANSLATIONAL MEDICINE
AND HEALTH SCIENCES (ICTMHS)**
in conjunction with
**4TH JAVA INTERNATIONAL
NURSING CONFERENCE (JINC)**

Semarang, Indonesia
September, 14th-15th, 2018



**"Creating a Better Future of Health Care:
Partnerships in Research, Education, and Clinical Care"**

PROCEEDING

2nd INTERNATIONAL CONFERENCE OF TRANSLATIONAL MEDICINE AND
HEALTH SCIENCES

in conjunction with

4th JAVA INTERNATIONAL NURSING CONFERENCE 2018

*“Creating Better Future Health Care: Partnership in
Research, Education and Clinical Care”*

Patra Semarang Hotel & Convention, Central Java, Indonesia
14 – 15 September 2018

Published by:

Faculty of Medicine, Diponegoro University
Jln. Prof. H. Soedarto, SH, Tembalang, Semarang-Indonesia

Phone: +6224 76480919 Fax: +6224 76486849

E-mail: ictmhs.jinc2018@fk.undip.ac.id

Website: ictmhs.fk.undip.ac.id

Proceeding of 2nd International Conference of Translational Medicine and Health Sciences in
Conjunction with 4th Java International Nursing Conference 2018

“Creating Better Future Health Care: Partnership in Research, Education and Clinical Care”

Editorial Team:

Ns. Nana Rochana, MN.

Ns. Fatikhu Yatuni Asmara, S.Kep., M.Sc.

Dr. Anggorowati, M.Kep.,Sp.Mat.

Megah Andriany, S.Kp., M.Kep., Sp.Kom., Ph.D.

Layout Editor: Pradipta Ary Pamungkas, S.Kom., Gunawan Nurcahyo, S.Si.

Cover Design: Fida’ Hussain, S.Kep., Ns.

ISBN 978-602-5560-75-0

Published By

Faculty of Medicine, Diponegoro University

Jl Prof. Soedharto, SH, Tembalang, Semarang

This proceeding is fully copyrighted. All rights reserved. No part of this work may be reproduced, stored, or transmitted in any means, electronic, mechanical, photocopying, microfilming, recording or otherwise, without written permission from the Publisher, with the exception of any material supplied specifically for the purpose of being entered and executed on a computer system, for exclusive use by the purchaser of the work.

Proceeding of 2nd International Conference of Translational Medicine and Health Sciences in
Conjunction with 4th Java International Nursing Conference 2018

“Creating Better Future Health Care: Partnership in Research, Education and Clinical Care”

Semarang: Faculty of Medicine, Diponegoro University, 2018

1 exemplar, 241 pages, 8.27 x 11.69 inch

Collaboration or partnership is a term which is often used in the fields of research, clinical practice and health professional education. Collaboration occurs when two or more people work together to achieve common goals and shared outcomes. Collaboration includes a commitment to reciprocal relationships to achieve certain goals and is developed in conjunction with mutually supportive resources. Research, education and clinical practice are interrelated; research informs education, which in turn will affect the provision of care to patients.

In the area of health, it is believed that collaboration leads to better health services and improves patient satisfaction. Science is the foundation for providing quality service to patients and research is one of the means of doing so. The complexity of patient problems nowadays requires inter-professional collaborations among the health professions since the problems may not be solved when a profession is working alone. Collaboration in research occurs when researchers from more than one profession or disciplines work together to achieve common goals in generating new scientific findings.

Collaboration in the health services occurs when two or more people from multidisciplinary areas work together to solve the problems of the patients comprehensively. This collaboration may occur when each individual mutually respects and contributes according to his/her position to create a conducive environment to optimize the patient's health. WHO states that the health workers who perform collaborations in caring for patients will gain more success in resolving complex patient problems. Collaborations in health services are useful for improving the skills to provide comprehensive care, developing innovations and creativity, and focusing more on patient-centered care.

Collaboration in education or known as inter-professional education (IPE) occurs when two or more students from multidisciplinary studies learn together on a particular topic and jointly solve the case. Collaborations in education does not only occur in the university contexts but also in the clinical practice areas. These collaborations are closely related. IPE is part of the professional practice before the health workers implement it in the healthcare services.

The international conference which focuses on “Creating a Better Future of Healthcare: Partnership in Research, Education, and Clinical Care” is a way to create successful collaborations among the health workers. The conference also aims to introduce the public that the Faculty of Medicine Diponegoro University is committed to creating harmonious collaboration between health workers, including doctors, nurses, nutritionists, pharmacists, and dentists.

Organizing Committee

2nd INTERNATIONAL CONFERENCE OF TRANSLATIONAL MEDICINE AND HEALTH SCIENCES *in conjunction with* 4th JAVA INTERNATIONAL NURSING CONFERENCE 2018

“Creating Better Future Health Care: Partnership in Research, Education and Clinical Care”

The organizing committee includes the following people:

Organizing Chairperson

Ns. Reni Sulung Utami, S.Kep.,M.Sc

Vice Project Manager

Gemala Andjani, S.P.,Si.,Ph.D

Secretary

Ns. Devi Nurmalia, S.Kep, M.Kep

Fillah Fithra Dieny, S.Gz., M.Si

Nur Laili Fithriana, S.Kep

Pradipta Ary Pamungkas, S.Kom

Gunawan Nurcahyo, S.Si

Treasurer

Titik Prawitarsih, SE

Dian Hidiani, SE

Scientific committee

Ns. Fatikhu Yatuni Asmara, S.Kep.,M.Sc.

dr. Muflihatul Muniroh, M.Si., Med., Ph.D.

dr. Nani Maharani, M.Si.Med., Ph.D.

Dr. Anggorowati, M.Kep.,Sp.Mat.

Suhartini, MNS, Ph.D.

Dr. Diana Nur Afifah, S.TP., M.Si.

Ns. Nana Rochana, MN.

Ns. Sri Padma Sari, MNS.

Megah Andriany, M.Kep.,Sp.Kom., PhD.

Deny Yudi Fitranti, S.Gz., M.Gz.

Hartanti Sandi Wijayanti, S.Gz., M.Gz.

Program Committee

Ns. Niken Safitri Dyan K., M.Si.Med.
Ns. Artika Nurrahima, M.Kep.
Ns. Diyan Yuli W., M.Kep.
Pramuji, S.Kom.
Rahma Purwanti, SKM., M.Gizi.
Ayu Rahadiyanti, S.Gz., MPH.
Nurmasari Widyastuti, S.Gz., M.Si.Med.
Dewi Marfu'ah Kurniawati, S.Gz., M. Gz.

Publication & Documentation

Ns. Heni Kusuma, S.Kep., M.Kep., Sp.Kep.KMB.
Asin Nurakhir, S.Pd.
Margiyono, S.Kom.
Binar Panunggal, S.Gz., MPH.

Sponsorships

Ns. Ahmat Pujiyanto, M.Kep.
Etty Nurul Afidah, S.Kep.
Ns. Dody Setiawan, M.Kep
Dr. dr. Renni Yuniati, Sp.KK.
Nuryanto, S.Gz., M.Gizi.
dr. M. Besari Adi Pramono, Sp. OG(K), M.Si.Med.

Facility and Equipment

Evi Silitoma Kriswanto
Wakidjo

Food and beverage

Sarah Ulliya, S.Kp., M.Kes.
Septi Harni Wahyuningtyas
Diyah Sumanti

Transportation

Wahyu Erlangga
Heri Krisnanto

Welcome message

First of all, thanks to **Almighty Allah**, the most merciful, beneficent and compassionate, for His blessing that this conference could be held today.

I would like to express my greatest gratitude to Prof. Dr. Yos Johan Utama, S.H., M.Hum; Rector of Diponegoro University, Prof. Dr. dr. Tri Nur Kristina, DMM., M.Kes.; Dean of Faculty of Medicine Diponegoro University, Prof. Dr.rer.nat Heru Susanto, S.T., M.M., M.T.; Director of LPPM, dr. Ahmad Zulfa, Sp.And., Ph.D, vice dean of research and innovation Faculty of Medicine for all of their kind supervision during the preparation of this event. I would like to express my sincere gratitude to all of the committee members for all of your hard work, kind help, and best effort as a solid team work, by which this event can be held successfully today. I would like to thank all of the honorable speakers for your willingness to come and give lectures here, and all of participants from various institutions in the world. Welcome to **2nd International Conference on Translational Medicine and Health Sciences (ICTMHS) in conjunction with 4th Java International Nuraing Conference 2018**. It is a great pleasure to have all of you here in Semarang Indonesia, on this September 14-15, 2018.

ICTMHS is an annual routine program that began in 2017 initiated by the faculty to support the university's vision of becoming a world class university. Nursing, a part of the faculty of medicine, has previously held international nursing conferences since 2010. This time we are together to support UNDIP as a research university by organising this event. The theme of this conference is "Creating a Better Future of Healthcare: Partnership in Research, Education and Clinical Care". The focuses of this conference are Interprofessional Education and Research, Collaborative Practice, Translational Medicine, and Nutrition, Dietetic and Food. This is an interesting theme that invites all health workers to unite to increase collaboration in various aspects to produce quality services. Through this conference, we hope to contribute in introducing and educating the scientific community on the nowadays advance in medical and health sciences. As a major goal of this event, we hope that it can be an excellent chance to discuss interesting ideas and develop fruitful project in the future, network opportunities with old and new colleagues, coordination new partnerships which advance collaboration either about the research field or not, as well as the careers of all participants.

Please enjoy your participation in ICTMHS-JINC 2018 and have a great experience during your stay in Semarang.

Wish you the best in all your work.

Ns. Reni Sulung Utami, S.Kep.,M.Sc

Organizing Chairperson

Praise to the God Almighty for the International Conference on Translational Medicine and Health Science (ICTMHS) in conjunction with Java International Nursing Conference (JINC) 2018, Faculty of Medicine Diponegoro University and I are very excited for this event and we welcome to all of the participants and speakers to this event.

The special acknowledgement, I address to the distinguished speakers dr. Bambang Wibowo, Sp. OG(K), MARS from Ministry of Health Republic of Indonesia, dr. Soetedjo, Sp.S(K) from The Indonesian Medical Association, Prof. Sandra Capra, PhD, FDAA from The University of Queensland-Australia, Prof. Dr.dr Kristina, DMM., M.Kes from Diponegoro University-Indonesia, Prof. Dra. Setyawati, M.App.Sc., Ph.D from Faculty of Nursing University of Indonesia, Fiona Miller from Griffith University-Australia, Lybrich Kramer from Hanze University-The Netherland, Anne Hyre from Jhon Hopkins University-United States of America, Kjara Bernadette V. Agatep from St. Paul University-Philippines, Dr. dr. Mexitalia Setiawati, Sp.A(K) from Diponegoro University-Indonesia, dr.JC. Susanto, Sp.A (K) from Diponegoro University-Indonesia

I am very grateful for your willingness to attend and share your knowledge to us. Faculty of Medicine Diponegoro University has a vision to be the centre for medical and health sciences. ICTMHS is an annual routine program that began in 2017 initiated by the faculty to support the university's vision of becoming a world class university. Nursing, a part of the faculty of medicine, has previously held international nursing conferences since 2010. This time we are together to support UNDIP as a research university by organising this event. The theme of this conference is "Creating a Better Future of Healthcare: Partnership in Research, Education and Clinical Care". This is an interesting theme that invites all health workers to unite to increase collaboration in various aspects to produce quality services.

I hope, from this event we will increase the number of Faculty of Medicine and Diponegoro University's international publications as well as promoting international collaboration. I wish that this event will give a big contribution on sharing knowledge and information about medical and health sciences for the academic members, researchers and all of the participants. I also would like to appreciate to all of the committee members for their effort and hard work so that this event can happen.

Once again, welcome to the International Conference on Translational Medicine and Health Science (ICTMHS) in conjunction with Java International Nursing Conference (JINC) 2018. I hope that all of you enjoy your stay at Semarang and we will see you again on the next event.

Prof. Dr. dr. Tri Nur Kristina, DMM, M.Kes
Dean of Faculty of Medicine
Diponegoro University

Assalamulaikum Warahmatullahi Wabarakatuh

Praise goes to the most merciful God Allah SWT for the blessings of life and knowledge for us to gather in this meaningful occasion.

It is a great pleasure and honour for our University to be the host of 2nd International Conference on Translational Medicine and Health Sciences (ICTMHS) in conjunction with 4th Java International Nursing Conference (JINC). The special acknowledgement, I address to the distinguished speakers dr. Bambang Wibowo, Sp. OG(K), MARS from the Ministry of Health Republic of Indonesia, dr. Soetedjo, Sp.S(K) from The Indonesian Medical Association, Prof. Sandra Capra, PhD, FDAA from the University of Queensland-Australia, Prof. Dr.dr Kristina, DMM., M.Kes from Diponegoro University-Indonesia, Prof. Dra. Setyawati, M.App.Sc., Ph.D from Faculty of Nursing University of Indonesia, Fiona Miller from Griffith University-Australia, Lybrich Kramer from Hanze University-The Netherland, Anne Hyre from Jhon Hopkins University-United State of America, Kjara Bernadette V. Agatep from St. Paul University-Philippines, Dr.dr.Mexitalia Setiawati, Sp. A(K) from Diponegoro University-Indonesia, and dr.JC. Susanto, Sp.A (K) from Diponegoro University-Indonesia. Thank you for the valuable time to deliver knowledge and share scientific information at this conference. I believe that this opportunity will provide the valuable information for us and deliberate some new research ideas for participants of this conference.

For all participants, I would also like to welcome you at this conference. The origin of the conference theme is reflected from the idea of our Center of Excellence (CoE) which was established in 2012 representing our priority as a research university. Since the declaration of Diponegoro University as a research university, the main theme of every research result will be enhanced to the level of international benchmarking. Diponegoro University, has strong human resources and research background related to translational medicine and health sciences. It is also supported by laboratory such as Center for Biomedical Research.

The theme of this conference is "Creating a Better Future of Healthcare: Partnership in Research, Education and Clinical Care". This interesting issue needs to be discussed in this conference by sharing research findings and ideas. Therefore I believe this international conference will be able to present an interesting discussion with prominent speakers from Indonesia, Australia, Netherland, United States of America and Philippines, giving a contribution to the development of science and hopefully will encourage more research on this area.

I am grate full to see that this conference has enormous responses from the participants either from domestic or from other countries. The number of publication indexed by reputable database has been set as an indicator for world university rank including Indonesia. Therefore, Diponegoro University also encourages all scientists and academic staffs to increase their publication records in these international reputation journals.

Currently, Diponegoro University is in the 7th position among universities in Indonesia for the number of publications in reputable international journals. The number of Undip scientific

Welcome message

publications indexed in Scopus is 2350 documents. I sincerely express appreciation to the organizing committee for their effort to realize this conference. By the end of my short welcome address, I hope our foreign guests take advantage of their stay here to enjoy our beautiful city, Semarang.

Finally, once again I would like to convey a warmest welcome to all the distinguished guests and participants of the conference. Diponegoro University is giving the best to assist you in every way, therefore please enjoy our hospitality and have a delightful experience in the conference.

Wassalamulaikum Warahmatullahi Wabarakatuh

Thank you for your kind attention.

Prof. Dr. Yos Johan Utama, S.H., M.Hum

Rector of Diponegoro University

Table of Contents

Cover Page	ii
Preface	iv
Organizing Committee	v
Welcome Message from The Organizing Chairperson	vii
Welcome Message from The Dean, Faculty of Medicine, Diponegoro University	viii
Welcome Message from The Rector Diponegoro University	ix
Table of Content	xi
KEYNOTE PRESENTATION	
PLENARY SESSION I	
Implementation Inter-professional Education in the Community <i>Prof. Dr. dr. Tri Nur Kristina, DMM., M.Kes</i>	1
PLENARY SESSION II	
Nutrition during the first 1000 days of life <i>Professor Lybrich Kramer, MSc IBCLC</i>	2
Fail to thrive and to overcome <i>Dr. dr. Mexitalia Setiawati E., Sp.A(K)</i>	3
Interventions to Prevent Stunting in Early Life <i>dr. JC. Susanto, Sp.A(K)</i>	4
Stunted Growth among Children in Cabagan Isabela; A Population- Based Cross-Sectional Study <i>Kjara Bernadette Agatep, PhDNSc</i>	5
PLENARY SESSION III	
Dietetics in Maternal Emergency <i>Professor Sandra Capra AM BSc(Hons), DipNutr&Diet, MSocSc, PhD, FDAA</i>	6
Capacity Building Approaches to Create Effective Teamwork In Obstetrics Emergencies <i>dr. Ratnasari Dwi Cahyanti, Sp. OG(K), M.Si.Med</i>	7
Perception, experience and expectation of pregnant women about emergency care during pregnancy and labor <i>Professor. Dra. Setyowati, MApp.Sc, PhD</i>	8
The Quality of Health Care Services and Referring in Maternal Emergency: Based on EMAS <i>Anne Atkinson Hyre CNM, MSN, MPH</i>	9
INVITED LECTURES	
Functional Outcome, Cognitive and Coping in Stroke Ischemic Survivors after Three Months Onset: Comparison between Post Stroke Depression and Non-Post Stroke Depression Groups <i>Fitria Handayani, Setyowati, Dwi Pudjonarko, Dian Ratna Sawitri</i>	10
Neurology Impacts Related on Mercury Intoxication, From In-vivo to Population Studies in Indonesia <i>Muflihatul Muniroh</i>	11
Optimizing Intervention for Perinatal Women with Management Cortisol <i>Anggorowati</i>	12
Stress Level and Coping Strategies in Elderly in Nursing Homes <i>Gladis Risna Aisya, Nurullya Rachma</i>	13
Cognitive Disorder in Epilepsy Patients <i>Yuriz Bakhtiar, M Thohar Arifin, Zainal Muttaqin, Erie BPS Andar, Aris Catur, Happy Kurnia B, Dody Priambada, Hardian</i>	14

Table of Contents

Finding The Link between Hyperuricemia and Atrial fibrillation and Its Potential Therapeutic Strategy <i>Nani Maharani</i>	15
Life Skills as a Behaviour Change Strategy in The Prevention of HIV and AIDS in Central Java School <i>Untung Sujianto</i>	16
Enzymatically Modified Resistant Starch from Banana <i>Diana Nur Afifah</i>	17
Nutraceuticals Encapsulation by Modified Liposome: Study in Vitamin D3 <i>Gemala Anjani</i>	18
Assessment of Inter-Professional Education <i>Fatikhu Yatuni Asmara</i>	19
Caring in The Health Care Team to Improve Patient Safety Goals <i>Luky Dwiantoro</i>	20
LQT Syndrome Type 2: A Focus on the Enhancement of Mutant hERG Protein Expression <i>Endang Mahati</i>	21
The Effect of Cloud Ear Fungus (<i>Auricularia Polytricha</i>) on Lipid Profile on Wistar Rats Induced by Reused Cooking Oil <i>Henna Rya A , Nyoman Suci W ,Ratih Budinastiti, I Made Miarta Yasa</i>	22
The Social and Humanistic Nursing Technology Model to Enhance the Quality of Patient Care for Critically Ill Patients: A Feature Perspective <i>Suhartini Ismail</i>	23
Thromboprophylaxis: Prevention and Treating of Venous Thromboembolism <i>Satrio Adi Wicaksono</i>	24
Telenursing for Haemodialysis Patients based on Empowering with Self Efficacy Training as an Effective Nursing Care Intervention <i>Henni Kusuma</i>	25
Spirituality to Promote Recovery among People with Schizophrenia <i>Sri Padma Sari</i>	26
Discharge Planning Elements for Prisoners with TB <i>Megah Andriany, Umaporn Boonyasopun, Pajongsil Perngmark</i>	27
Family Income Rate, Maternal Knowledge and Nutritional Status among Stunted Children Under Five Years Old in Mlonggp Sub-district, Jepara District <i>Ani Margawati, Ari Budi Himawan, Arwinda Nugraheni, Dea A Adespin</i>	28
ORAL PRESENTATION	
Paediatrics	
Relationship of Affective Function of Families with Behavior of Temper Tantrum of 3-5 Years Old Children in Patrang Sub-District of Jember District <i>Latifa Aini Susumaningrum, Emi Wuri Wuriyaningsih, Lisca Nurmalika Fitri</i>	29
Development and Trial of a Paediatric Falls Screening Tool for Use in an Indonesian Context <i>Natalia R. Yulianti, Dianne Noviadini, Kasmirah, Sri E. P. Sudarko, Ann Bolton, Kobi Schutz, Cheryl Hunt, David G. Arthur</i>	30
Differences in Children's Physical Activity after a Self-Management Program of 5A Method in an Elementary School <i>Puji Purwaningsih</i>	31
Milk and Fish Consumption of Preschool Children with Stunting in Developing Country <i>Rina Pratiwi, Sherly Mediana, Annisa Fathia, Maria Mexitalia</i>	32
Identifying Factors Influencing Survival in Pediatric Sepsis Using Various Analysis Model <i>Asri Purwanti</i>	33
The Effects of Zinc Supplementation on Immune Response of Obese Children With Family History of Atopy <i>Dewi Ratih, Mulyono, Saekhol Bakri, Wistiani</i>	34

Table of Contents

Neurology	
The Effect of Addition Kinesio Taping to McKenzie Exercise for Functional Status in Chronic Mechanical Low Back Pain Patient <i>Maya Puspa Rini, Rudy Handoyo</i>	35
The Effects of Duration of Antiepilepsy Drugs Use on IQ of Focal Cortical Dysplasia Patients <i>Zahranatha Dzaky Fadhila, Yuriz Bakhtiar, Zainal Muttaqin, Muhammad Thohar Arifin, Hardian, Muhammad Rully Zen, AnnisaFadhilah Al Hanif</i>	36
Usefulness Of Intraoperative Ultrasonographic For Brain Surgery <i>Thohar Arifin</i>	37
Association of Executive Functions and Post Stroke Depression among Stroke Survivor after Three Months Onset: Preliminary Study <i>Fitria Handayani, Setyowati, Dwi Pudjonarko, Dian Ratna Sawitri</i>	38
Sensitivity Evaluation of Magnetization Transfer Ratio for Diagnosing Intractable Medial Temporal Lobe Epilepsy with Normal MRI: Experience in Indonesia <i>Hermiina Sukmaningtyas, Jacob Pandelaki, Meira Dewi Kusuma Astuti, Diah Fauziah, I. Riwanto, Zainal Muttaqin</i>	39
Assosiation of Interleukin-10 (Il-10) Serum Levels with Clinical Outcomes Patients f Acute Ischemic Stroke <i>Dwi Pudjonarko, Endang Kustiowati, Thoiful Chakim</i>	40
Factors Associated with Physiological Response of Acute Ischemic Stroke Patients <i>Dwi Mulianda, Dwi Pudjonarko, Henny Kusuma</i>	41
Prospective Study: Clinical Outcome of Epidurolysis and Laminectomy on Lumbar Disc Herniation Treatment in Dr. Kariadi Hospital Semarang- Indonesia <i>Trianggoro Budisulistyo, Jamilah</i>	42
Critical-Emergency	
Visiting Hour's Policies in Intensive Care Unit: Exploring Families' Views <i>Endri Styani, Reni Sulung Utami</i>	43
Critical Care Nurses' Perception of Barriers and Supportive Behaviors in End-of-Life Care <i>Reni Sulung Utami, Eka Permatasari</i>	44
An evaluation of Code Blue System implementation to manage cardiac arrests: A qualitative study <i>Nana Rochana, Feri Cahyanto</i>	45
Reproduction	
eNOS Gene Polymorphism Of Follicular Fluid On Patient's Endometriosis <i>Cahyono Hadi</i>	46
Comparison of the Efectiveness Of Therapy Abdominal Strechting Exercise and Watermelon Against Dysmenorrhea <i>Hasnah, Harmina, La Ode Agustino Saputra, Andi Budiyanto Adi Putra</i>	47
The Experiences of Commercial Sex Workers in Decision Making and Walking on VCT <i>Nila Titis Asrining Tyas</i>	48
The Effectiveness of Premarital Screening for Secondary Infertility in the Second Pregnancy after 5 Years at Public Health Centers In Semarang-Indonesia <i>Dewi Puspitaningrum, Nuke Devi Indrawati, Indri Astuti Purwanti</i>	49
Sperm DNA Fragmentation Index and Malondialdehyde of Diabetic Rat Treated by Aloe Vera Peel Extract <i>Wulan Christijanti, Lisyani B. Suromo, Achmad Zulfa Juniarto</i>	50

Table of Contents

Pain Level and Interleukin-6 using Counter-Pressure during the 1st Stage of Labor <i>Sri Rejeki, Tri Hartiti, Machmudah, Achmad Solichan</i>	51
Exploring Javanese women's level of pregnancy knowledge : a cross sectional study <i>Anggorowati Anggorowati, Fatikhu Asmara, Sari Sudarmiati, Elsa Naviati, Dwi Susilowati</i>	52
The Association of Maternal Antenatal Oral Glucose Tolerance Test and Fetal Congenital Heart Disease <i>Fanti Saktini, Tuntas Dhanardhono, Puspita K. Dewi, Wei Xing, Edwin W.H. Thia, George S.H. Yeo</i>	53
Maternal Characteristics and Serum Zinc Levels with Birth Weight <i>Banun Lentini, Ani Margawati, Maria Mexitalia</i>	54
8-Hydroxy-2 Deoxyguanosine (8-Oh-Dg) In The Follicular Fluid In Endometriosis Patients <i>Cahyono Hadi, Djaswadi Dasuki, Ahmad Hamim Sadewa, Indwiani Astuti, Awal Prasetyo</i>	55
Cardiovascular	
Correlation between Levels of Biomarkers and Thickness of Fibrous Cap of Coronary Atherosclerotic Plaque Detected by Optical Coherence Tomography: a Meta-analysis <i>Udin Bahrudin, Pipin Ardhhianto, Sefri Sofia, Sulistiyati Utami, Mochamad Sobirin, Ilham Uddin</i>	56
Nurse's Mental Model and Performance in Cardiopulmonary Resuscitation Skill for Acute and Critical Patients <i>Suhartini Ismail, Dewi Ulfah</i>	57
Correlation Between Atherogenic Index Of Plasma, Serum Amyloid A, Mean Platelet Volume And Stenosis Degree In Coronary Artery Disease <i>Nuraddiyani Hidayah, Purwanto AP, Edward Kurnia SL</i>	58
IL-10 Gene Promoter Region -1082 A/G Polymorphism and IL-10 Expression In Indonesian Rheumatic Mitral Valve Patients <i>Jarot Widodo, Fanti Saktini, Sefri Noventi Sofia, Hardian, Tri Indah Winarni, Susi Herminingsih</i>	59
The Correlation between Neutrophil to Lymphocyte Ratio (NLR) with TIMI and GRACE Risk Stratification Scores in Patients with Acute Myocardial Infarction with ST segment Elevation (STEMI) <i>Sulistiyati Bayu Utami, Asri Rizqi Matondang, Satrio Adi Wicaksono</i>	60
Ectopia Cordis With Tricuspid Atresia as a Part of Pentalogy of Cantrell : a Case Report <i>Astri Pinilih, Anindita Soetadji</i>	61
Nutrition	
Study of Goat Milk Kefir with Vitamin D3 Fortified on Blood Glucose and Insulin in Rats <i>Reza Achmmad Maulana, Diana Nur Afifah, Ninik Rustanti, Gemala Anjani, Binar Panunggal</i>	62
Comparative Analyses of Antioxidant Activity, Aloin and Mannose Content of Aloe Vera (Aloe vera Barbadensis) <i>Septiani, Siti Fatimah-Muis, Gemala Anjani</i>	63
The Comparative Role between Cape Gooseberry Juice and Quercetin in Increasing Antioxidant Capacity and Adiponectin in Diabetic Rat <i>Luthfia Dewi, Mohammad Sulchan, Heri Nugroho Hario Seno, Gemala Anjani, Kis Djamiatun</i>	64
Study of Goat Milk Kefir Fortified With Vitamin D3 on Malondialdehyde (MDA) Levels in Diabetes Rats <i>Muhammad Tri Putra Utomo, Binar Panunggal, Diana Afifah, Ninik Rustanti, Gemala Anjani</i>	65
Potential of Rice Bran Extract to Body Weight, Triglyceride, and Malondialdehyde Levels in Obese Rat <i>Naro Elyas Sueratman AR, RA Kis Djamiatun, Ahmad Zulfa Juniarto</i>	66
Anti-Diabetic Potential of Golden Berry Juice in Diabetic Rats <i>Larasati Sekar Kinasih, Ahmad Ni`matullah Al-Baarri, Kis Djamiatun</i>	67

Table of Contents

Utilization of Banana Peel as Pectin Source for Antidiarrheal Drug in Castor Oil-Induced Wistar Rats <i>Martin Adhitya Subagio, Cecilia Noviyanti Salim, Qorina Putri Srisantoso, Yora Nindita, Astika Widy Utomo, Nani Maharani</i>	68
Correlation Between Visceral Fat and Hepcidin, Hemoglobin, Iron Serum, HBA1C in Overweight and Obesity <i>Meita Hendrianingtyas, Villa Sekar Cita, Edward KSL</i>	69
Association between Healthy Eating Index and Nutritional Status of Women across Two Seasons <i>Ilmia Fahmi, Rina Agustina, Luh A. A. Wiradnyani, Nia N. Wirawan, Betha Lusiana, Ratna C. Purwestri</i>	70
Analysis of Correlation between Self-Efficacy of Self-care and Demographic Characteristic with Attitude of Low Salt Diet among Patients with Hypertension <i>Maida Yuniar Benita, Henni Kusuma</i>	71
Milk Protein Supplementation Improves Muscle Performance and Total Antioxidant Status in Soccer Athletes <i>Muhammad Irwan Setiawan</i>	72
Nutritional Status and Hemoglobin Levels among HIV/AIDS Patients Receiving High Energy and High Protein Diet <i>Leny Budhi Harti, Gatot Ismanoe, Romizah Harun</i>	73
Patient's Perception of Food Correlates with the Amount of Patient's Plate Waste <i>Hesti Retmo Budi Arini, Laksmi Karunia Tanuwijaya, Yudi Arimba Wani, Eva Putri Arfiani</i>	74
The Optimal Efforts in The Prevention of Muscle Fatigue by Palm date and Cashew Nut Intervention <i>Mursid Tri Susilo</i>	75
Adequacy of Energy Protein Intake and Hand Grip Strength (HGS) in HIV patients <i>Firda Nurachma, Muchlis Saforo, Minidian Fasitasari</i>	76
Effect of Zinc on Milkfish Nastar-Cookies to Albumin and Hemoglobin Levels in HIV/AIDS Patients <i>Nurul Hindaryani, Muchlis Achsan Udji Sofro, Tri Winarni Agustini</i>	77
Intake of Sugar Sweetened Beverages as a Risk Factor for Central Obesity among Women in Reproductive Age <i>Nabila Rifka Annisa, Fillah Fithra Dieny, Choirun Nissa, A. Fahmy Arif Tsani</i>	78
IPE - Management	
Inter-professional Education (IPE) in Developing Countries: Challenges and Lesson Learnt from its Implementation in United Kingdom: A Systematic Review <i>Endah Sulistyowati, Louise Walker</i>	79
The Competency Of Clinical Educators In Guiding The Students <i>Devi Nurmalia, Sarah Ulliya, Muhamad Hasib Ardhani</i>	80
Effect of Team Build Training on Perception Towards Communication&Teamwork for Students of FMPHN-UGM <i>Widya Wasityastuti, Sri Mulyani, Aviria Ermamilia, Rosalia Harisaputra, Ayuningtyas Satya Lestari</i>	81
Roles and Responsibilities Among Nurse, Medical and Nutrition Student <i>Braghmandita Widya Indraswari Indraswari, Purwanata Purwanta, Lastdes Cristiany Friday, Mirza Hapsari Sakti Titis Penggalih Penggalih, Sifak Nikmatul Fitri</i>	82
Students Perception about Work Team Ability after Implementation of Ipe Program in the Community <i>Fatikhu Yatuni Asmara, Tri Nur Kristina</i>	83

Table of Contents

Chief Nurses' Self-Management during the Application of 'Relactor' Nursing Delegation Model at Roemani Hospital of Semarang <i>Vivi Yosafianti Pohan, Dewi Gayatri, Eni Hidayati</i>	84
Factors Analysis Related Towards Behavior Of Nosocomial Infection Control On Family Waiting Patient <i>Ratnasari, Anggorowati, Madya Sulisno</i>	85
The Effect of Ten Carative Factors Application on the Improvement of Nurses Caring Skills and Patient Satisfaction at Regional Public Hospital Jombang <i>Amalia Mastuty, Luky Dwiantoro, Bambang Edi Warsito</i>	86
Activity	
Oxidative stress after long-distance cycling (Indonesian North Coast & Tour de Borobudur 2017 Study) <i>Mahalul Azam, Sri Ratna Rahayu, Nova Alvia Fitriani, Arulita Ika Fibriana, Hardhono Susanto, Martha Irene Kartasurya, Udin Bahrudin</i>	87
<i>The Effect of Red Cabbage Extract to MDA Levels in Rat Blood After Maximum Physical Activity</i> <i>Nadia Haris</i>	88
Prevalence and Risk Factors for Low Back Pain in Food Processing Factory Workers in Semarang Indonesia <i>Dea Amarilisa Adespin, Hari Peni Julianti, Ani Margawati, Arwinda Nugraheni, Aras Utami</i>	89
Effects of Progressive Muscle Relaxation on Sleep Quality and Fatigue in Cancer Patients undergoing Chemotherapy: A Systematic Review <i>Devi Setya Putri, Muchlis AU Sofro, Nana Rochana</i>	90
A Study on Body Temperature Variation on Basic Organ Stretching Posture of Mompyeong Movement Exercise <i>Swanny T Widyaatmadja, Kim Young Duk</i>	91
The Overview Of Physical Activity In Patients With Hypertension At Kedungmundu Health Center Semarang <i>Rianti Putritsani, Henni Kusuma, Susana Widyaningsih, Sarah Ulliya</i>	92
Infection	
Factors That Influence the Length of Hospitalization after Appendectomy in Acute Appendicitis Patients in Dr. Kariadi Hospital <i>Yogi Ajik Yudoyono, Saekhol Bakri, Eka Yudhanto, Abdul Mughni</i>	93
Carbohydrate Restriction Alleviate Inflammatory Responses <i>Nurina Tyagita</i>	94
<i>Annona Muricata Increase IL-27, CXCL12 Levels and Spleen-White-Pulp-Diameter in Severe Malaria</i> <i>Kis Djamiatun, Sudaryanto, Noor Wijayahadi, Astika Widy Utomo, Qurrata Áyuni Wae , Ika P Miranti, Djoko Nugroho</i>	95
Drug discovery	
The Effects of Phaleria macrocarpa Extract on Mitotic Index and Tumor Mass Progression on Epidermoid Carcinoma of Swiss Mice In vivo experimental study in Swiss mice which treated neoadjuvant paclitaxel and cisplatin <i>Vito mahendra Ekasaputra, M. Thohar Arifin, Djoko Handojo</i>	96
The Use of Datura metel's Extract as Medical Balm to Cure Irritant Contact Dermatitis on Fishermen <i>Jihan Farhana, Widya Wati, Starry Ivorynanga, Banis Afifah</i>	97

Table of Contents

Effectiveness of Eugenol Ointment to Reduce Cutaneous Candidiasis Lesion <i>Vania Salsabila</i>	98
Comparison of Bee Products and Burn Ointment to Healing Speed of Second Degree Burns <i>Haris Alwafi, Ayyasi Izaz Almas, Edsel Abi Yazid Al-Busthami</i>	99
Influence of Actinidia Deliciosa Extract on Toxicity of Acetaminophen in Wistar Rats <i>Amallia N. Setyawati, Naufal Ihsan</i>	100
The Effect of Green Tea Leaf Extract on Caspase-3 Protein Level in D-Galactose Induced Balb/C Mice <i>Ainun Rahmasari Gumay, Saekhol Bakri, Lusiana Batubara, Dwi Retnoningrum</i>	101
Activation of IL-6 and MIP-2 by Non-toxic Methylmercury and Its Suppression by N-acetyl-L-cysteine <i>Muflihatul Muniroh</i>	102
Screening of Spongejaspis Sp-Associated Bacteria Producing Protease Inhibitor <i>Dede Mahdiyah, Helmia Farida, Aris Tri Wahyudi, Widanarni</i>	103
Eyes - Ear	
Aflibercept And Bevacizumab Injection Effects On Visual Acuity Post Vitrectomy Diabetic Retinopathy <i>Arief Wildan, Winarto, Tri Nur Kristina</i>	104
The Effect of Ranitidine Administration Time to Axon Degeneration due to Optic Nerve Neuropathy <i>Galih Ricci Muchamad, Dwi Pudjonarko</i>	105
Correlation Between Blood Cotinine, Colour Vision, And Contrast Sensitivity: Study In Tobacco Farmer <i>Riski Prihatningtias</i>	106
Effects of Modified Ninja Hijab Inner Usage on Hearing Acuity and Sound Localization <i>Salma Adhenia</i>	107
The Effect of Various Topical Concentration of DLBS1425 Towards cPLA2 Expression in Wistar Mouse Cornea After Alkali Burn <i>Rima Octaviani, Trilaksana Nugroho, Sri Inakawati</i>	108
Endocrine - Kidney	
The Effects of Alkaline Ionized Water Administration to the Fasting Blood Glucose Levels in Patients with Type 2 Diabetes Mellitus <i>Satrio Adi Wicaksono, Sulistiyati Bayu Utami, Dina Nabyla</i>	109
Effect of Noni (Morinda citrifolia) Juice to Decreases Blood Uric Acid Level and Carrageenan Paw Edema Model Rats (Rattus norvegicus) <i>Alvira Firdausi Ali, Lingga Agustina, Muhammad Mufaiduddin, Desy Armalina</i>	110
Turmeric as a Preventive Agent of Oxidative Stress and Diabetic Nephropathy in Alloxan Induced Wistar Rats <i>Annisa Dentin Nugroho, Kiki Nilasari, Vanessa Andhani Putri, Ainun Rahmasari Gumay, Tanjung Ayu Sumekar, Vega Karlowee, Hardian</i>	111
The Lived Experience Of Patients With Chronic Kidney Disease Of Stadium V Undergoing Peritoneal Dialysis <i>Icha Gamelia Prisma Pradita, Henni Kusuma, Susana Widyaningsih</i>	112
Psychiatrics	
The Effect of Chewing Gum to the Level of Concentration in Student with Anxiety <i>Siska Tanwina, Buwono Puruhito, Yosef Purwoko</i>	113

Table of Contents

Effect of Green Tea (<i>Camellia sinensis</i>) on Erythrocytes Stability in Exercise-Induced Oxidative Stress Condition <i>Dwi Ngestiningsih, Iklima Lintang, Faizah Fulyani</i>	114
Effect of Cinnamon Powder to Oxidative Stress: A Study with Mice Exposed to Reheated Cooking Oil <i>Swara Wida Shakti, Margaret Damaiyanti, Fatimah Al Atsariyah, Yosef Purwoko</i>	115
Differences of Beck Depression Inventory-II Score before and after Probiotics Administration <i>Rines Harlen Theodora, Widodo Sarjana, Alifiati Fitrikasari, Darmono SS</i>	116
Kidney Transplantation in Indonesia : A Multicentre Study <i>Eriawan Agung Nugroho, Tommy Supit, Ardy Santosa, Nanda Daniswara, Sofyan Rais Addin</i>	117
Combination Cognitive Behavior Therapy (CBT) and Self Help Group (SHG): Case Series In Adolescence With Anxiety <i>Mariyati, Novy H.C Daulima, Mustikasari</i>	118
Eldery	
Association Between Geriatric Hospitalized Patients' Frailty Status And Outcomes In Dr. Kariadi Hospital Semarang <i>Yosef Purwoko, Kris Pranarka, Rejeki Andayani</i>	119
Effects of Circuit Training on Balance in Elderly <i>Ramandhani Agustawan, Tanti Kesoema</i>	120
Formal Caregiver Burden of Elderly with Dementia in Nursing Home <i>Nur Ayun R. Yusuf</i>	121
The Relation Of Marital Status,Physical Activity and Gender With Depression Level In Elderly <i>Wachidah Yuniartika</i>	122
Respiratory	
Nasal Irrigation Effects towards Nasal Mucociliary Transport Time in Active Smokers <i>Trikaya Cuddhi I, Anna Mailasari K. D2, Dwi Marliyawati</i>	123
The Effect Of TB Survivors Empowerment As Indicators Of Tuberculosis Program Achievement <i>Sulidah Sulidah; Ms. Agus Purnamasari; Ms. Dewy Parman</i>	124
Potency of <i>Nephrolepis exaltata</i> Herbal Mask to IgA Levels of Textile Factory Workers <i>Awal Prasetyo</i>	125
GPAP (Gel Pengharum Anti Polutan): Utilization of Snake Plant (<i>Sansevieria trifasciata</i>) Extract to Neutralize CO, NO ₂ , and SO ₂ Indoor Pollutant <i>Irfan Kesumayadi</i>	126
Effects of Beta-Glucan on IFN γ and IL-12 Production in PBMCs Induced by M. Tuberculosis DNA <i>Meira Erawati, Edi Dharmana, Nyoman Widyastiti, Tri Indah Winarni</i>	127
POSTER PRESENTATION	
Cardiovascular – Paediatrics - Infection	
The Association between Serum Malondyaldehyde and Nitric Oxide Level of Children Living In Area of Chronic Pesticide Exposure <i>Astra Parahita, Galuh Hardaningsih, Anindita Soetadji</i>	128
Relating Factors of Adherence in Following PROLANIS on Hypertension Patients <i>Ms. Isnaini Nur Faizah; Ms. Henni Kusuma; Mr. Untung Sujianto; Mrs. Sarah Ulliya</i>	129

Table of Contents

Atypical Mononuclear Cell in Immune Thrombocytopenia Purpura (ITP) with Massive Bleeding <i>Edward Kurnia SL, Meita Hendrianingtyas, Imam Budiwijono</i>	130
Correlation between HbA1c Level and Monocyte Percentage in Obesity <i>Edward Kurnia SL, Meita Hendrianingtyas, Banundari Rachmawati</i>	131
Impact of GANCHI (Green Tea and Chia Seed) on the Pathology of Atherosclerosis <i>Chairunnisa Wirdina, Adrina Nur Saffira, Arteria Dewi Nurhutam, Hermawan Istiadi</i>	132
The effectiveness between Diphenhydramine And Clonidine Reduce Post-Sevofluran Agitation in Pediatric <i>Satrio Adi Wicaksono, Riken Mediana Eka Putri, Heru Dwi Jatmiko</i>	133
Effects Of Supportive Group Therapy on Stress Elderly with Hypertension in Pudukpayung Public Health Centre <i>Lisnawati, dr. M. Thohar Arifin, Rita Hadi Widyastuti</i>	134
A Comparison between Emla and Cold Compress Used on School Aged Children's Level of Pain During Venipuncture Procedure in Dahlia Room, Regional Public Hospital H Soewondo, Kendal <i>Tri Sakti Widyaningsih, Dwi Nur Aini</i>	135
Head Circumference and Seizure, Leucocyte Count, Phymosis can Help Doctors Make Etiological Diagnosis In Pediatric Patients with Prolonged Fever <i>Erna Mirani, Helmia Farida, Mmdeah Hapsari</i>	136
The Effect of Circuit Relationship Germs Cause Healthcare - Associated with Germs Endogenous Nasal Infections in Children With Leukemia <i>Dimas Tri Anantyo, MMDEAH Hapsari, Anindita Soetadji</i>	137
The Efective Comprehensive Management Service Model of Transdiscipline Team Child with Down's Syndrome <i>Asri</i>	138
The Effect of Circuit Training on Peak Expiratory Flow in Elderly <i>Go Linda Sugiarto, Endang Ambarwati</i>	139
Streptococcus pneumoniae: From Growth Characteristics to the Occurrence of Meningitis <i>Indri Putri</i>	140
Secret Culture Check as Supporting Diagnosis of VAP on Posted Surgery in ICU dr. Kariadi Hospital <i>Johan Arifin, Hari Hendriarto Satoto, Anindito Andi Nugroho</i>	141
Survey Risk Factors of Non-communicable Disease in Rembang Regency (Stepwise WHO Analysis) <i>Putri Septyarini, Praba Ginandjar, Lintang Dian Saraswati</i>	142
Emergency – Critical - Reproduction	
SASA (Surgical Apgar Score & ASA) for Morbidity and Mortality Post Craniotomy at Dr. Kariadi Hospital <i>Taufik Eko Nugroho</i>	143
The Effect of Cognitive and Physical Therapy in Critically Ill Patients <i>Arlies Zenitha Victoria, Reni Sulung Utami</i>	144
Emergency and Disaster Curriculum for Undergraduate Health Students In UGM <i>Madelina Ariani, Bella Donna, Yayuk Hartriyanti, Sutono Sutono, Hendro Wartatmo, Gandes Rahayu</i>	145
Critical Care Nurses' Attitudes towards the Importance of Families in Intensive Care Unit <i>Hellen Marini, Reni Sulung Utami</i>	146

Table of Contents

Assessing Mortality Rate in Sepsis Patient at Neutrophil Lymphocyte Ratio and SOFA Score in dr. Kariadi Hospital <i>Jati Listiyanto Pujo, Aulianur</i>	147
Nitric Oxide (No) Level of The Follicular Fluid In Endometriosis Patients <i>Cahyono Hadi, Djaswadi Dasuki, Ahmad Hamim Sadewa, Indwiani Astuti, Awal Prasetyo</i>	148
Clinicopathological Features of Epithelial Ovarian Cancer with Recurrent Disease in Kariadi General Hospital, Semarang, Indonesia <i>Anggiyasti Vidya Hapsari, H T Mirza Iskandar</i>	149
The Increase of Breast Milk Production in Post-Partum Mothers through Breast Care <i>Priharyanti Wulandari, Menik Kustriyani, Khusnul Aini</i>	150
The Effect of Obesity Classification on Preeclampsia <i>Meidona Milla</i>	151
Effect of Peer Education on Improving Self-Efficacy of Pregnant Women in Breastfeeding the Baby <i>Siti Mardiyah, Anggorowati, Artika Nurrahima</i>	152
The Effect of Successful Package Breastfeed to Self Efficacy and Motivation of Breastfeeding Mother <i>Maya Cobalt Angio S, Anggorowati, Artika Nurrahima</i>	153
Self-Disclosure to Family on Women Inmates with HIV <i>Restu Amalia Azmy, Megah Andriany, Nur Setiawati Dewi</i>	154
The Effect of Antenatal Health Education on Family Attitudes in Facing Dangers of Pregnancy <i>Dwi Listiowati, Sri Rejeki, Artika Nurrahima</i>	155
Comparison Effects of Ginger and Mefenamic acid for Women with Dysmenorrhea: Systematic Review <i>Yuniar Fajarini</i>	156
Characteristic and Sex Behavior among Men Who Sex with Men <i>Arwinda Nugraheni, Firdaus Wahyudi, Teddy Wahyu Nugroho, Diah Rahayu W, Dea Amarilisa A, Ani Margawati, Sanya G Brugman</i>	157
Metabolic - Nutrition	
The Effect of Self Help Group (SHG) on Self Management and Blood Sugar Levels in Elderly with Type 2 Diabetes Mellitus <i>Novita Wulan Sari, Nurullya Rahma, Muflihatul Muniroh</i>	158
Relationship between Serum Zinc Levels and Atopy in Obesity <i>Mulyono, Wistiani</i>	159
Effect of 10,000 Steps Goal Program on Waist Circumference in Obese Adolescent <i>Natalina Eka Setyawati, Rahmi Ismi</i>	160
Consumption Pattern of Rural Agricultural-Based Javanese: A Study in Gintungan-Bandung Semarang <i>Etis D. Suryo, Rosiana E. Rayanti, Ferry F. Karwur</i>	161
Consumption Pattern of Java Society at The Age of ≥ 50 In Junggul Hamlet, Semarang District <i>Irene Pungky Nugrahany, Desi, Ferry F. Karwur</i>	162
Determination of New Cut-Off Point Neck Circumference and Waist Circumference Among Obesity Adolescents in Jayapura Papua <i>Nia Budhi Astuti, Endah Sri Rahayu, Rosmaida Sirait</i>	163
Relationship Between Obesity with Blood Sugar as Diagnostic Criteria Risk of Diabetes Mellitus in Adolescent at Smak Santo Yusup Surabaya <i>Agustina Chriswinda Bura Mare, Ermalynda Sukmawati</i>	164

Table of Contents

Perception on Patient Safety and Patient Identification Practice among Hospital Food Service Workers <i>Ika Ratna Palupi, Yeni Prawiningdyah, Annisa L. Setyawening, Lutfia Amalia</i>	165
Low Level of Vitamin D Serum in Hospitalized Patients with Chronic Heart Failure <i>Yanuar Hartanto</i>	166
Dietary Intake of Stunted Children Age 9-11 Years Old in Brebes <i>Rina Pratiwi, Galuh Hardaningsih, Farid Rahmadi, Adriyan Pramono</i>	167
Neurology – Infection – Oncology	
Psychosocial Associated and Predictors of Post Stroke Depression 3- 6 Months after Onset: A Systematic Review <i>Fitria Handayani, Setyowati, Dwi Pudjonarko, Dian Ratna Sawitri</i>	168
Management of ARDS and Septic-Aki Pasca Infratentorial Tumour Craniotomy <i>Ken Wirastuti</i>	169
The Correlation between Neutrophil to Lymphocyte Ratio (NLR) with TIMI and GRACE Risk Stratification Scores in Patients with Acute Myocardial Infarction without ST segment Elevation (NSTEMI) <i>Sulistiyati Utami, Satrio Adi Wicaksono, Asri Matondang</i>	170
The Quantity and Quality of Antibiotics use for patients in Surgery Departements of Two District Hospital in Central Java Province <i>Eko Setiawan, Helmia Farida, Rudi Yuwono</i>	171
Leaflet Design of Nutrition Education on Food Intake to Treat Anemia in Female Teenager <i>Remo Mardhiati</i>	172
Management - IPE	
Correlation Between Frequency of Clinical Skills Performance and Self-Perceived Competence of Medical Clerckship Students in Faculty of Medicine UNISSULA <i>Ika Rosdiana</i>	173
Implementation of M-Health Discharge Planning to Optimize Discharge Readiness for Acute Myocardial Infarc Patients <i>Anis Laela Megasari, Diyah Fatmasari, Tri Johan Agus Yuswanto</i>	174
Characteristics of Professionalism of Nurses: A Literature Review <i>Abigael Grace Prasetiani, Megah Andriany, Diyan Yuli Wijayanti</i>	175
The Influence of Module Training of Acute Glaucoma Emergency of 3B Competence toward Knowledge Level and Clinical Skill of General Doctors <i>Sisilya Maria Umboh, Trilaksana Nugroho, Maharani, Hari Peni Julianti</i>	176
Nurses Knowledge on Paliatif Care Treatment for Cancer Patients in Dr. Kariadi Hospital Semarang-Indonesia <i>Luthfia Pravitakari Astuti, Susana Widyaningsih</i>	177
Nurse Student Interprofessional Education Experiences <i>Muhammad Hasib Ardani, Siti Anisah</i>	178
Effective Methods to Improve Compliance Implementation Nurses Against Hand Hygiene: A Literature Review <i>Munandar</i>	179
Effects of Training on Proctor's Reflective Modification Model Supervision for Head Nurses on Nurses' Fall Prevention Behaviors <i>Dewi Suryaningsih, Suhartono, Sri Rejeki</i>	180
Effects of Caring Leadership on Job Satisfaction of Staff Nurses in Public Health Center <i>Abtalia Erce Totononu, Lucky Dwiantoro, Devi Nurmalia</i>	181

Table of Contents

Activity - Gastrointestinal	
The Correlation between the Height of Medial Longitudinal Arch with Feiss Line and Arch Index with Footprint <i>Ervi, Rahmi Isma</i>	182
The effects of Circuit Training and Senam Kesegaran Jasmani Lanjut Usia on The Functional Mobility of The Elderly <i>Rahmatika, Lanny Indriastuti</i>	183
Effect of 10,000 Steps Goal Program in Quality of Life Domain Physical Health in Obese Adolescent <i>Margaretha Kartikawati, I Made Widagda</i>	184
Kind of Massage in Patients with Chronic Functional Constipation Patients: A Literatures Review <i>Agustina Chriswinda Bura Mare, Yane Cristiana Ua Sanan, Anna Mariance Taeteti, Fefi Eka Wahyuningsih, Miftahul Jannah, Debi Ariyanto</i>	185
Laparoscopy Biliodigestif Surgery <i>Abdul Mughni, Aditya Davy Santosa</i>	186
Gratophyllum Pictum (L.) Griff Extract as Anti-Inflammatory on Wistar Rat with Experimental Hemorrhoids. Study on serum IL-6, COX-2, $\square\square F\square\square$ and total leucocytes in anal tissue <i>Sigit Adi Prasetyo, Yan Wisnu, Eriawan, Edi Dharmana, Neni Susilaningsih, Ignatius Riwanto</i>	187
Effect of Hypnotherapy on Vomiting and Nausea in Cancer Patient: an Analytical Literature Review <i>Dadi Hamdani, Anggorowati, Henni Kusuma, Awal Prasetyo</i>	188
Adequacy of Energy Protein Intake and Hand Grip Strength (HGS) in HIV patients <i>Firda Nurachma, Muchlis Sofro, Minidian Fasitasari</i>	189
The Overview Of Physical Activity In Patients With Hypertension At Kedungmundu Health Center Semarang <i>Rianti Putritsani, Henni Kusuma, Susana Widyaningsih, Sarah Ulliya</i>	190
Mental Health – Chronic Illness	
Military Psychological Well-being of the Indonesian Context: A Systematic Review <i>Sulistiyani Margono, Megah Andriany, Nur Setiawati Dewi</i>	191
Effect of Psychoeducation on the Psychological Condition of Cancer Patients: A Systematic Review <i>Lilik Sriwiyati, Muchlis AU Sofro, Nana Rochana</i>	192
Psychological Distress in Caregivers of Schizophrenia Patients at Primary Health Care (PHC) <i>Emi Wuri Wuyaningsih, Latifa Aini Susumaningrum, Juwarti, Ira Rahmawati</i>	193
The Effect of Holy Quran Voice with and without Translation on Symptom of Schizophrenia <i>Azkiya Rizki Rahmaniya, Sesa Amelia, Ariandini Hanuun, Widodo Sarjana, Sri Padma Sari</i>	194
Effect of Yoga Relaxation Reduce Anxiety among Hypertension People <i>Rr. Sri Endang Pujiastuti</i>	195
Spiritual and Emotional Technique for Physical and Psychological Problems in Patients with Chronic illnesses: A Systematic Review <i>Emy Kurniawati, Hery Djagad Purnomo, Henni Kusuma</i>	196
Symptoms of Depression Among Women Prisoners <i>Ilma Widiya Sari, Mateus Sakundarno Adi, Megah Andriany</i>	197
The Effects of Cognitive Behavior Therapy (CBT) on Dietary Adherence of Patients Chronic Illness <i>Resa Nirmala Jona, Untung Sujianto, Hery Djagad Purnomo</i>	198

Table of Contents

Effect of Spiritual Therapy on Anxiety and Depression in Hemodialysis Patients an Analytical Literature Review <i>Erlangga Galih Zulfa, Henni Kusuma</i>	199
Effect of Aromatherapy in Reducing Anxiety: A Systematic Review <i>Muhamad Ibnu Hasan, Dadi Hamdani, Erlangga Nugroho, Andi Nurhikma, Mika Agustiana, Indri Wijayanti, Reni Sulung utami</i>	200
The Effect of Acceptance and Commitment Therapy on Depression of Patients with Chronic Disease <i>Avin Maria, Untung Sujianto, Niken Safitri Dyan Kusumaningrum</i>	201
Effectiveness of peer education on tuberculosis case finding: systematic review <i>Akbar Amin Abdullah, Farid Agushybana, Megah Andriany</i>	202
Profile of Microorganisms and Their Sensitivity in Diabetic Patients with Ulcers: Descriptive Study on Patients at Sultan Agung Islamic Teaching Hospital Semarang <i>Masfiyah Masfiyah, Rahayu, Vito Mahendra, Saugi Abduh</i>	203
Drug discovery - Kidney	
Tekelan Leaf Extract (<i>Chromolaena odorata</i>) 75% Reduces Bleeding Time of a New Wound <i>Siti Fadlilah, Nazwar Hamdani Rahil</i>	204
The Effect of Paracetamol and Morphine Analgesic Combination on Creatinine Levels in Male Wistar Rats <i>Satrio Adi Wicaksono, Pratiwi Diah Pitaloka</i>	205
The Relationship between Iodine Content of Water with Thyroid Volume <i>Enrico Morley, K Heri Nugroho</i>	206
Effect of Ketamine as Adjuvant in Superficialis Cervical Block on P Substance Content in Patient with Thyroidectomy <i>Yulia Wahyu Villyastuti, Ryan Maulana, Doso Sutiono</i>	207
Peer Support Program in Hemodialysis Patients: an Analytical Literature Review <i>Fida' Husain, Henni Kusuma, Andrew Johan</i>	208
Improving Quality Of Life (QoL) Among Family Caregivers of Patients on Hemodialysis with Increasing Family Resilience: an Analytical Literature Review <i>Akub Selvia, Muhammad Ali Sobirin, Henni Kusuma</i>	209
Analysis of Nursing Care Based on Self Care Orem's Theory among Patients with Urinary Elimination Disorder <i>Henni Kusuma, Wahyu Hidayati</i>	210
Patient and Family Experience Managing Body Fluids of Patients with ESRD undergoing Haemodialysis <i>Wahyu Hidayati, Henni Kusuma, Susana Widyaningsih, Yuni Hastuti, Chandra Ropyanto</i>	211
Dietary Diversity Among Adolescents in Senior High School, Sarolangun Jambi <i>Merita Merita, Dini Junita Tina Yuli Fatmawati, Nurfitriani</i>	212
The Effect of Paracetamol and Morphine Analgesic Combination on Aspartate Aminotransferase Levels in Male Wistar Rats <i>Pratiwi Diah Pitaloka, Satrio Adi Wicaksono²</i>	213
ATTACHMENTS	

Comparison of The Effectiveness of Therapy Abdominal Stretching Exercise and Watermelon Against Dysmenorrhea

Hasnah¹, Harmina, La Ode Agustino Saputra, Andi Budiyanto Adi Putra

¹ Nursing Program Study of Faculty Medicine and Health Science UIN Alauddin Makassar, Indonesia
Corresponding email: hasnah.nur@uin.alauddin.ac.id; harmina0606@gmail.com

ABSTRACT

Introduction: Dysmenorrhea is lower abdominal pain that is felt just before or during menstruation. This Dysmenorrhea can disrupt a person's activity and can indirectly affect the productivity and quality of life. Dysmenorrhea can be resolved with non-pharmacological therapies, one of that is with Abdominal Stretching Exercise therapy and Watermelon.

Methods: The research was a quasi-experimental non-randomized control group pre-post-test. The study was conducted in February 2016. Interventions were performed with abdominal therapy stretching exercise with watermelon for 10 to 15 minutes, pain intensity measurement using Numeric Rating Scale (NRS) instrument for three days. Analysis of data using statistical test of t-test. Respondents were 20 people studies, ten people as intervention group and ten people as control group and collected data by purposive sampling method. The study was approved by the university ethics committee.

Results: Based on test results obtained statistical p value= 0.004, which means that there are significant differences dysmenorrhea pre-test to post-test after abdominal stretching exercise therapy with watermelon.

Conclusion: It can be concluded that treatment with watermelon abdominal stretching exercise effective against Dysmenorrhea and this therapy could be an alternative for someone who has Dysmenorrhea.

Keywords: Abdominal stretching exercise; watermelon; dysmenorrhea.

ISBN 978-602-5560-75-0



**Hosted by Faculty of Medicine, Diponegoro University,
Semarang, Central Java, Indonesia**

