

To
Rector
UIN Alauddin
Makassar
Indonesia

Kreuzberggring 57, 37075 Göttingen
Telefon: 0551 / 39-5806/01
Fax: 0551 / 39-5861
E-Mail: aaurin@gwdg.de

13 March 2012

Mr. Mashuri Masri

Dear Rector,

I hereby confirm that Mr. Mashuri Masri from UIN Alauddin has made some scientific experiments while staying in our institute in January and February 2012. He has purified recombinant antigens of the protozoan parasite *Toxoplasma gondii* that were previously generated by another member of our institute. These antigens were then applied by Mr. Masri to a LineBlot assay which serves for improving diagnosis of toxoplasmosis.

Please let me know, if you need any further information.

Sincerely,



Prof. Uwe Groß

Make Stripe For 6 antigen

Mashuri masri

1. Make 3 line on membrane using normal pen



2. Don't touch the membrane, use the tweezers to hold it, wash a little bit with methanol, wash the 3 line first to avoid the ink of pen go to inside of membrane.
3. Wash with ethanol
4. Shaker 5 minutes
5. Clean Tool that use to press membrane
6. Lay Paper to the middle of Tool
7. Take the membrane from the shaker
8. Lay the membrane on mirror
9. PREPARE 1x PBS
10. Mark 8 eppendorf and fill with 6 antigen, water (-Ctrl), and (+ ctrl)
11. Drop 150 μ l of 1x PBS to each eppendorf
12. Take away the volume of each eppendorf according to volume we will add them (see LINEblot 3 (=))
13. Drop each solution to its eppendorf according to its volume (see LINEblot 3 (=))
14. Mix each eppendorf with vortex
15. Centrifuge a little bit in a little centrifuge
16. Lie the Lid in line of membrane (membrane position is in the middle of Tool)
17. Screwing 8 screw in its hole
18. Set and use 100 μ l of pipette and use mit filter
19.
 - a. Drop solution in eppendorf step by step on its well of antigen and (-Ctrl), and (+ ctrl)
 - b. No bubble
 - c. The sign is good when we shake, all of well touch by liquid
20. Take Parafilm
21. Press to each screw
22. Shaker in the middle of 2 to 10 rpm for over night

Use 1st day Line Blot

1. Cut the membrane (the amount depends on our samples)
2. Drop a little of methanol into big chamber
3. Lie the membrane into big chamber
4. Shake a little bit by hand
5. Drop methanol into 50 ml bottle falcon.
6. Drop 1X PBS + 0,1% tween20 into big chamber
7. Shake a little bit by hand
8. Throw away 1X PBS + 0,1% tween20
9. Drop 1X PBS + 0,1% tween20 into big chamber
10. Shaker for 5 minutes

11. PREPARE

Solution of **Milk 5% + (1X PBS + 0,2% Tween20)**

The amount depends on the total of our samples

1 ml to each samples + Precipitation of pipette

Milk 5% + (1X PBS + 0,2% Tween20)

If we need Milk 5% and total volume is 500 ml

So we take 25 gr Milk and dissolved into 500 ml of (1X PBS + 0,2% Tween20).

12. Throw away 1X PBS + 0,1% tween20
13. Drop 1X PBS + 0,1% tween20 into big chamber
14. Shaker for 5 minutes
15. Clean the chamber
16. Don't throw away the 1X PBS + 0,1% tween20
17. Drop **1 ml Milk 5% + (1X PBS + 0,2% Tween20) to each well** in chamber
18. Put into the shaker for 1.30 hours – 2 hours

19. Around 10 minutes before time is out

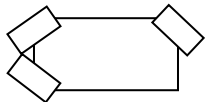
PREPARE

Mark eppendorf according to the code of samples

and write in a paper according to the code of samples in chamber

20. Drop **1 ml Milk 5% + (1X PBS + 0,2% Tween20) to each eppendorf**
21. Drop **1 µl serum to each eppendorf**
22. Throw away the solution in chamber
23. Drop **1 ml (milk + serum) to each well** in chamber
24. Shaker **over night in refrigerator**

2nd day Line Blot

1. Write our name in LAS 4000 machine for the time we want to use the machine
2. Take out liquid from chamber
3. Drop **1 ml** 1X PBS 0,1% + Tween20 to each well in chamber
4. Shaker for 15 minutes
5. **PREPARE** to Make 5% Milk + 1X PBS + 0,2% Tween20
(the amount of 5% Milk + 1X PBS + 0,2% Tween20 depends on our sample. **1ml for each samples (if we have 20 samples,make 30 ml (10 ml for precipitation of pipets))** Make in 50 ml or 15 ml of bottle falcon.
6. Take out 1 ml 1X PBS 0,1% Tween20 from each well chamber
7. Drop 1 ml 1X PBS 0,1% Tween20 to each well in chamber
8. Shaker for 15 minutes
9. Take out 1 ml 1X PBS 0,1% Tween20 from each well chamber
10. Drop 1 ml 1X PBS 0,1% Tween20 to each well in chamber
11. Shaker for 15 minutes
12. Take outside IgM/IgA/IgG from -20⁰C and keep in ice plate (around 5 minutes before use.
 - a. If we want IgM, Drop **1 µl IgM for each samples (if we have 20 samples,drop 20 µl)** into falcon bottle containing 5% Milk + 1X PBS + 0,2% Tween20.
 - b. If we want IgM and IgA and IgG, Drop **1 µl IgM, 1 µl IgA and 1 µl IgG for each samples (if we have 20 samples,drop 20 1 µl IgM, 20 µl IgA and 20 µl IgG)** into falcon bottle containing 5% Milk + 1X PBS + 0,2% Tween20.
13. Take out 1 ml 1X PBS 0,1% Tween20 from each well chamber
14. Drop 950 µl (IgM/IgA/IgG + 5% Milk + 1X PBS + 0,2% Tween20) to each well.
15. Shaker 1.30 – 3 hours.
16. Wash by dropping **1 ml** 1X PBS 0,1% + Tween20 to each well in chamber
17. Shaker for 10 minutes
18. Take out 1 ml 1X PBS 0,1% + Tween20 to each well in chamber
19. Wash by dropping 1 ml 1X PBS 0,1% + Tween20 to each well in chamber
20. Shaker for 10 minutes
21. **PREPARE :**
 - a. Take out the black big plate from LAS 4000 Machien
 - b. Turn on the machine and Computer
 - c. Set up suitable for our detection
22. Take out 1 ml 1X PBS 0,1% + Tween20 to each well in chamber
23. Wash by dropping 1 ml 1X PBS 0,1% + Tween20 to each well in chamber
24. Shaker for 10 minutes
25. **PREPARE :**
 - a. Paper, Clean The Tweezers.
 - b. Clean 2 side of plastic with etanol
 - c. Lay Plastic in the middle of black big plat
 - d. Take and Press Plaster with this position :

 - e. Take out **The Detection Reagent** from refrigerator.
26. Clean 2 side of lid plastic with etanol

27. Push the end of membrane by Tweezers **or** catch the black line by Tweezers until the black line appear to the top of chamber. Do it until all of membrane in each well are appear to the top of chamber
28. **Catch** the black line of membrane by Tweezers and **lie** on the plastic, **white line** of the membrane must be up. If the white line in down position, catch the black line of membrane and lie on our thumb and make it opposite by our forefinger.
29. Lie the membrane in line and near each other (black line must be in above position)
30. Hold on the big plate to make solution out and absorb solution with tissue and paper between the membrane
31. Press the plester in black line to make the solution out.
32. Mix detection reagent 1 : 1 (**1 ml : 1 ml**)
33. Drop detection reagent by 1000 μ m pipette into **all** the membrane.
34. Count time for 1 minute
35. Hold on the big plate to make solution out and absorb solution with tissue and paper between the membrane
36. Press the plester in black line to make the solution out.
37. Lie the lid plastic on the all membrane
38. Push the membrane by tissue.
39. Take to the LAS 4000 machine

In the LAS 4000 machine

Exposure

Interval

Manual

IgG

Time Interval 20 seconds

Best Time Quantification 160 seconds

Picture 8

IgM

Time Interval 20 seconds

Best Time Quantification 180 seconds

Picture 9

IgA

Time Interval 60 seconds

Best Time Quantification 600 seconds

Picture 10



120215 Platel IgG_1.tif



120215 Platel IgG_2.tif



120215 Platel IgG_3.tif



120215 Platel IgG_4.tif



120215 Platel IgG_5.tif



120215 Platel IgG_6.tif



120215 Platel IgG_7.tif



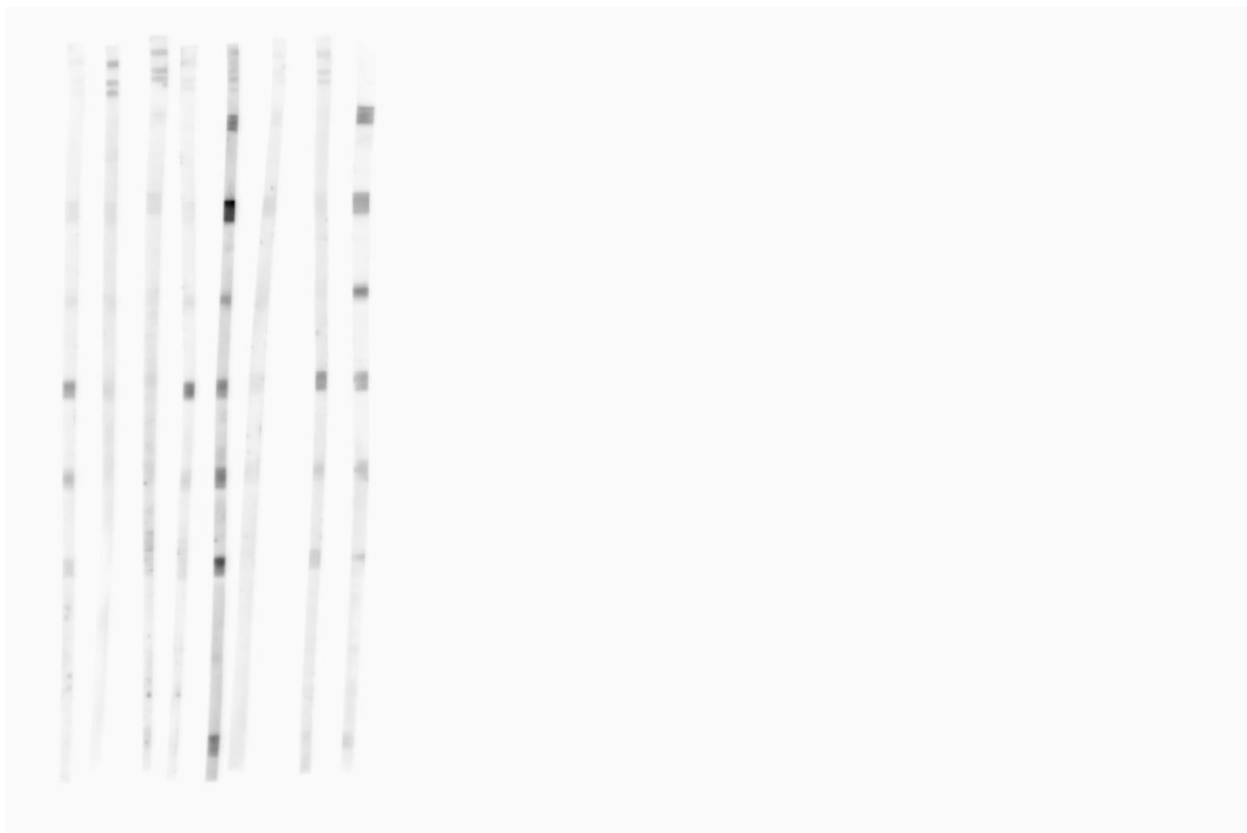
120215 Platel IgG_8.tif



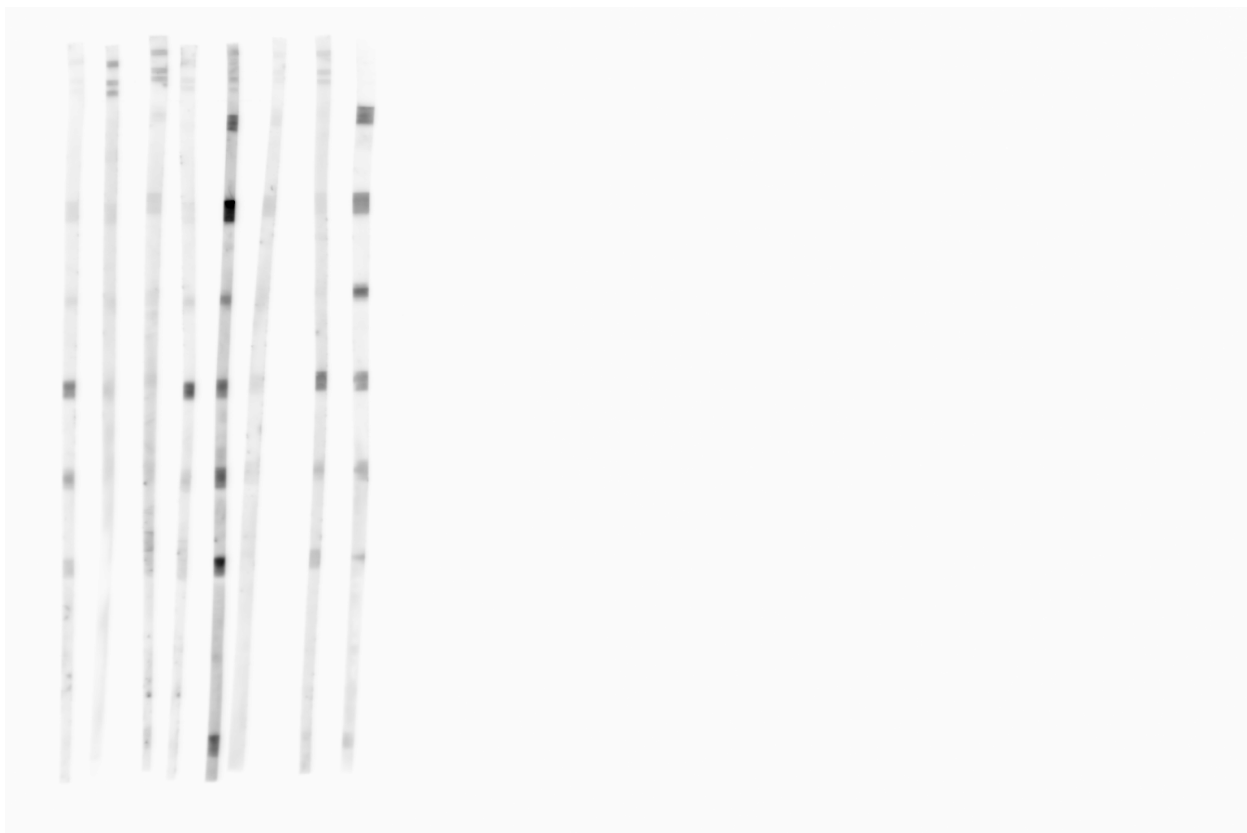
120215 plateJ IgG_1.tif



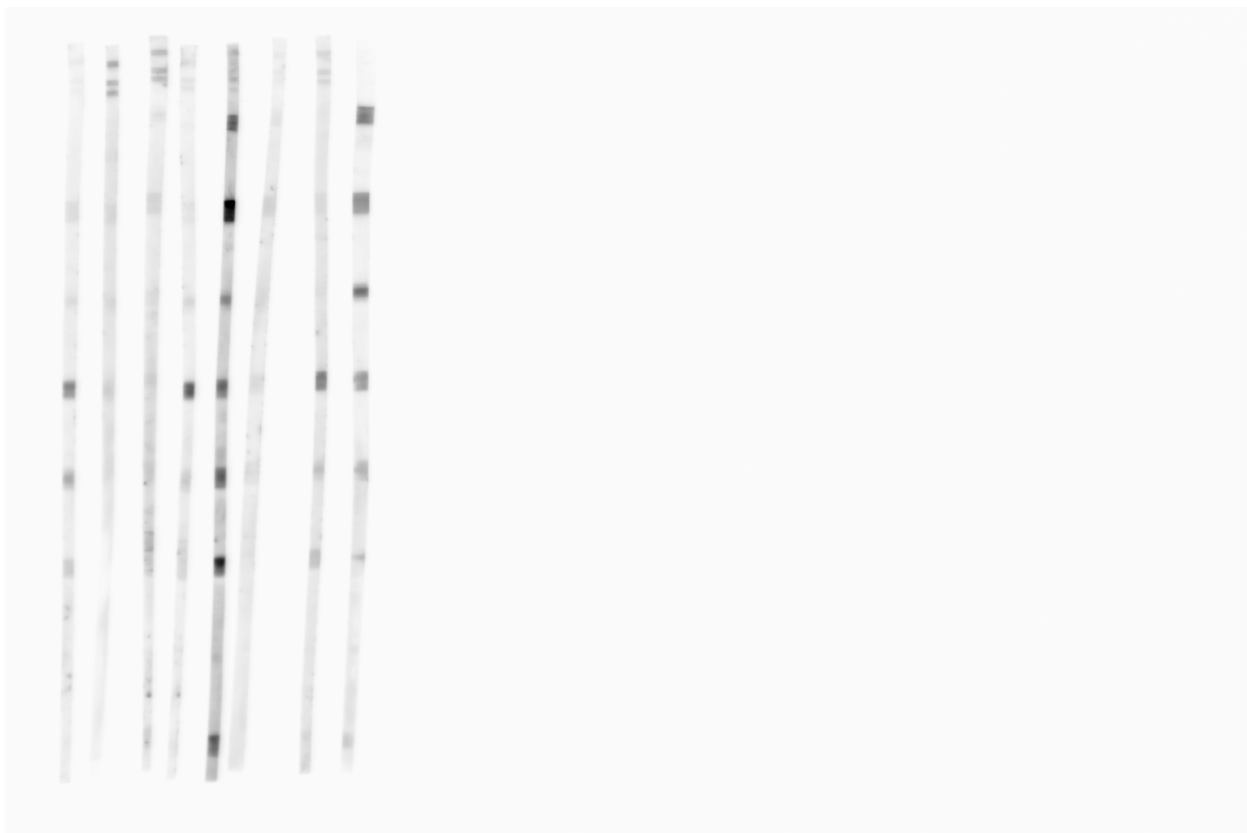
120215 plateJ IgG_2.tif



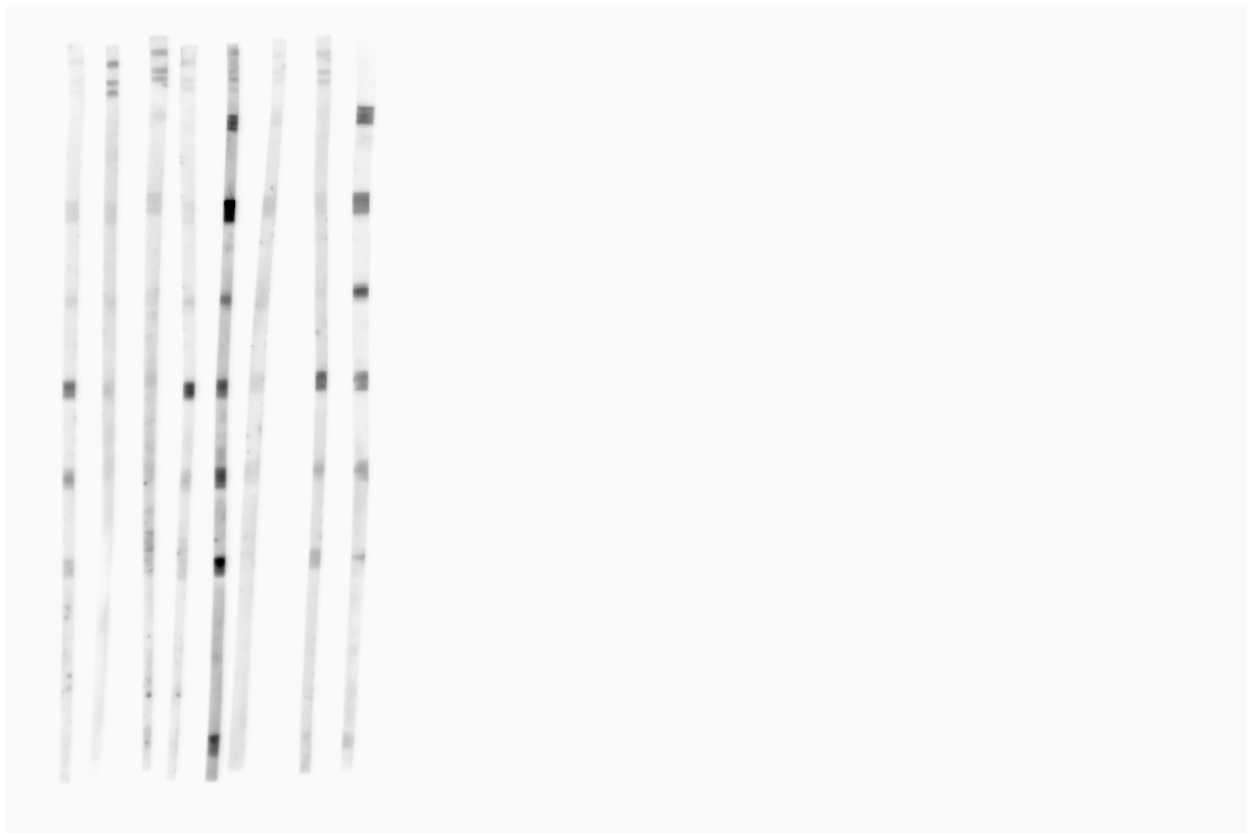
120215 plateJ IgG_3.tif



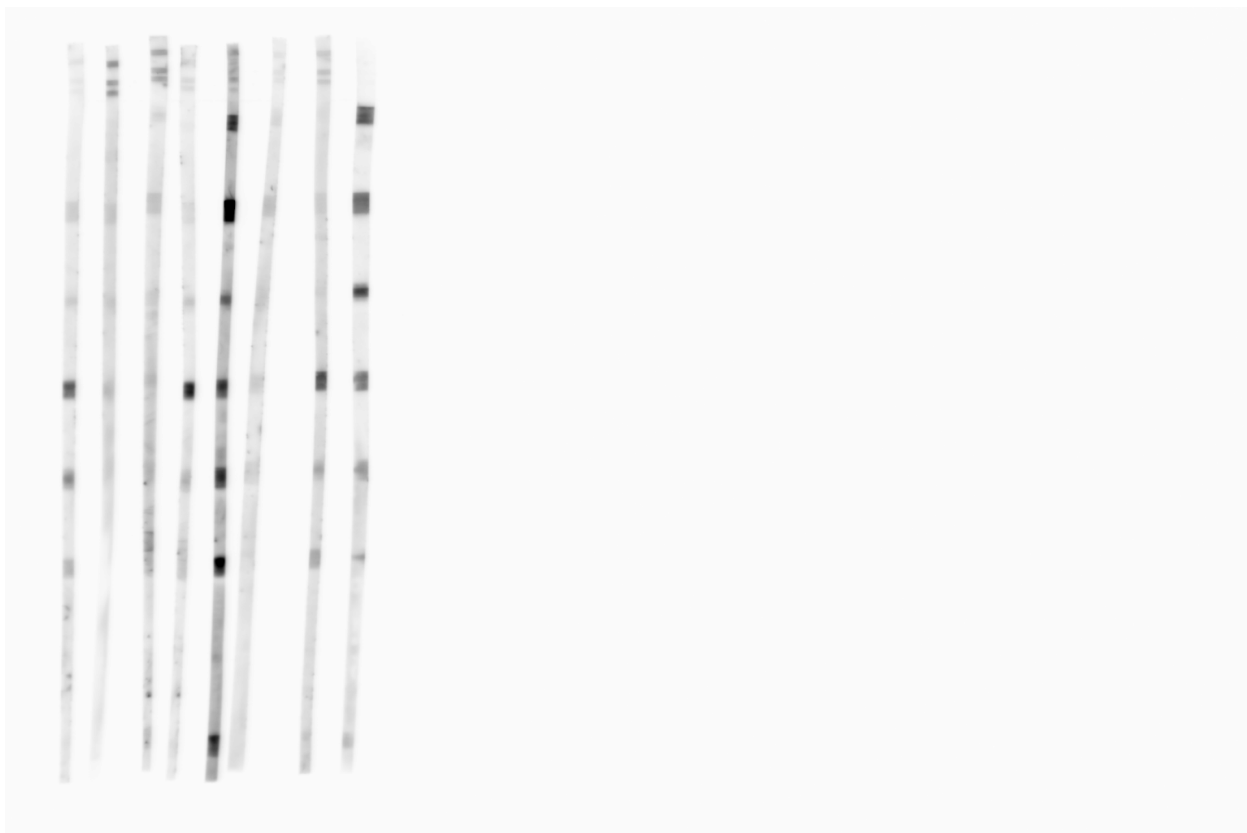
120215 plateJ IgG_4.tif



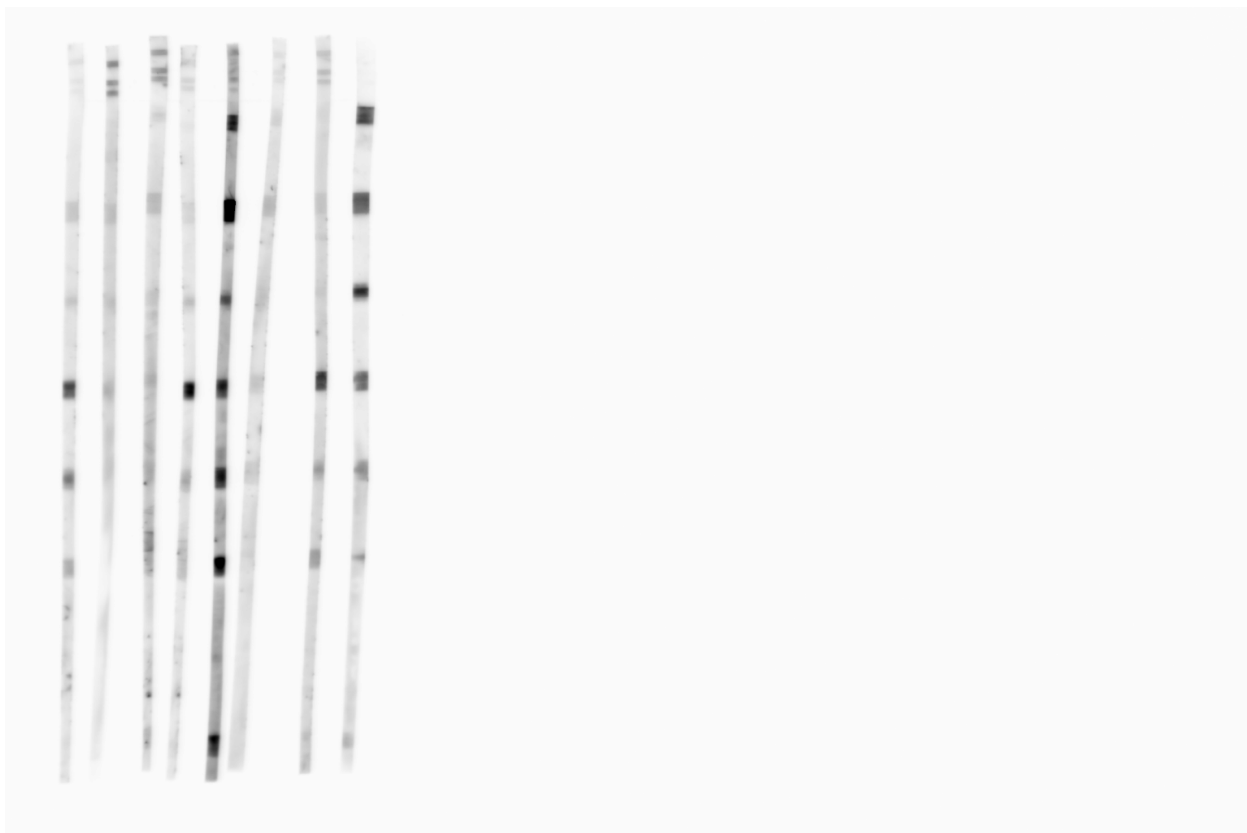
120215 plateJ IgG_4.tif



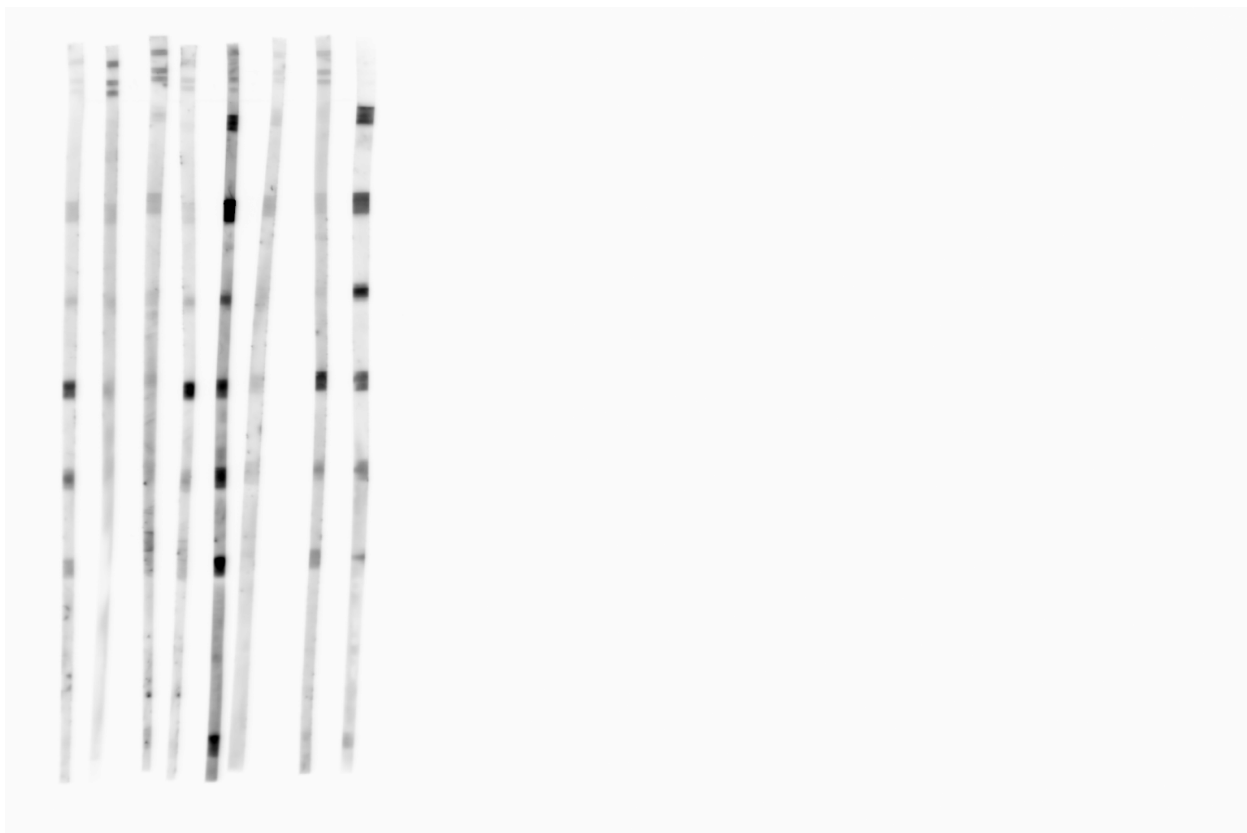
120215 plateJ IgG_5.tif



120215 plateJ IgG_6.tif



120215 plateJ IgG_7.tif



120215 plateJ IgG_8.tif



120215 plateL IgG_1.tif



120215 plateL IgG_2.tif



120215 plateL IgG_3.tif



120215 plateL IgG_4.tif



120215 plateL IgG_5.tif



120215 plateL IgG_6.tif



120215 plateL IgG_7.tif



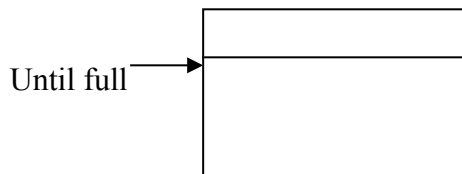
120215 plateL IgG_8.tif

SDS PAGE for WESTER BLOT

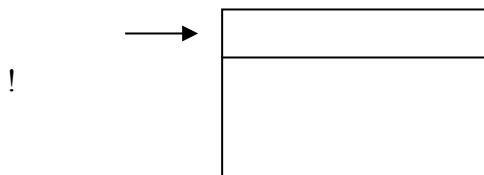
Mashuri masri

Trenngel

1. Wash 2 small glass by water
2. Wash 2 big glass by water
3. Don't touch the middle of glass
4. Wash 2 small glass by etanol
5. Wash 2 big glass by etanol
6. Don't touch the middle of glass
7. Lie small glass on big glass
8. small glass in front of us
9. take 50 ml bottle falcon
10. Mix all solution (Trenngel) in 50 ml bottle falcon
11. Drop solution by 1000 μ l pipet between small and big glass



12. If there is a bubble, drop etanol until the bubble is out
13. keep 15 minutes
14. Drop out the etanol by handling and turn 180°C
15. Put the paper between big glass and small glass to absorb etanol
16. Mix sammelgel solution in 50 ml bottle falcon
Bromphenolblau shake before drop (if there is a bubble in it)
17. Drop sammelgel solution until full



Cell culture
(mashuri masri)

Turn around the key in fire
Press and hold the green tombol until it lights

Take out the medium Toxo and Medium L929 from refrigerator
And keep into waterbath

Take out old host cell L929 3x2, old RH 4x3 and old NED 4x3 Plate from incubator

RH : Find 4 well that has a good cell (like small banana)

NED : Find 5 cell that has a good cell (like small banana)

Brown colour is host cell that die

1. Lock the key in HOOD
2. Clean the surface of hood by antiseptic
3. Push and hold and turn the yellow tool of fire in hood
Turn on the black box of fire
4. Take pipettes 10 ml pipettes and plastic pipette into hood
5. Hold them under fire before open and after open
6. Lie them like towel
7. Take out old host cell L929 3x2, old RH 3x4 and old NED 3x4 Plate that has been checked by mikroskop into hood
8. Mark a new plate to :
 - a. a new plate 3x4 for NED
 - b. a new plate 3x4 for RH
 - c. a new plate 3x2 for host cell L929
9. Move host cell L929 3x2 plate to a new plate 3x2 for host cell L929
 - a. Lock the cell with plastic pipette in each well at host cell L929 3x2 plate
 - b. Throw away the plastic pipette
 - c. Take 10 ml pipettes, hold under fire and take in to boy pipette
 - d. mix each well (up and down)
 - e. take a little bit from each well
 - f. **Drops** into new plate 3x2 for host cell L929
6 6 6
4 4 4
10. Move host cell L929 3x2 plate to a new plate 3x4 for RH
 - a. mix each well (up and down) in host cell L929
 - b. take a little bit from each well in host cell L929
 - c. **Drops** into new plate 3x4 for RH
5 5 5 5
4 4 4 4
2 2 2 2
11. Move host cell L929 3x2 plate to a new plate 3x4 for NED
 - a. mix each well (up and down) in host cell L929
 - b. take a little bit from each well in host cell L929
 - c. **Drops** into new plate 3x4 for RH
3 3 3 3
2 2 2 2

1 1 1 1

12. Throw away the 10 ml pipette

13. Move old RH 3x4 to a new plate RH 3x4 (that has containing host cell L929)

- a. Take old RH 3x4 Plate
- b. Mix (up and down) ONLY well marked (good in mikroskop)
- c. Take a little bit from well marked
- d. Drops to RH new plate (that has containing host cell L929 medium)

6	4	4	2
6	4	4	2
6	4	4	2

14. Throw away the 10 ml pipette

15. Move old NED 3x4 to a new plate NED 3x4 (that has containing host cell L929)

- a. Take old NED 3x4 Plate
- b. Mix (up and down) ONLY well marked (good in mikroskop)
- c. Take a little bit from well marked
- d. Drops to new plate NED that has containing host cell L929 medium

8	6	4	3
8	6	4	3
8	6	4	3

16. Throw away the 10 ml pipette

17. Fill the medium L929 to host cell L929 3x2 plate (that has containing L929)

- a. Under fire before and open medium L929
- b. Take 8 ml medium L929
- c. Fill 4 ml each well

18. Throw away the 10 ml pipette

19. Fill the medium TOXO to a new plate RH 3x4 (that has containing host cell L929 and RH)

- a. Under fire before and open medium TOXO
- b. Take until pipette 10 ml is full
- c. Fill 1 ml each well (it must be once time to drop all medium to all well in RH 3x4)

20. Don't Throw away the 10 ml pipettes

21. Fill the medium TOXO to a new plate NED 3x4 (that has containing host cell L929 and NED)

- a. Under fire before and open medium TOXO
- b. Take until pipette 10 ml is full
- c. Fill 1 ml each well (it must be once time to drop all medium to all well in NED 3x4)

120215 plate I, I, I IgG8.xls [Compatibility Mode] - Excel

File Home Insert Page Layout Formulas Data Review View Tell me what you want to do... Sign in Share

Cut Copy Paste Format Painter Clipboard

Arial 10 A A

B I U

Wrap Text

General

Conditional Formatting Format as Table Cell Styles

Insert Delete Format

AutoSum Fill Clear

Sort & Filter Find & Select

Editing

	A	B	C	D	E	F	G	H	I	J	K	L	M	N	O	P
1																
2				end result	cut off											
3	GRA1	1	79.542	50.980	28.44	Positif										
4	GRA2	2	50.333	21.771	33.62	Positif	cu over 20									
5	GRA6 (Dü)	3	61.583	33.021	83.21	Negatif										
6	GRA9	4	45.208	16.646	76.13	Negatif										
7	ROP1	5	54.021	26.271	78.83	Negatif										
8	SUB1 CT	6	51.604	23.854	53.01	Negatif										
9	NEG CTRL	7	30.771													
10	POS CTRL	8	98.104													
11	BG 5,6 & 7,8	9	27.750													
12	BG 1,2 & 3,4	10	28.562													
13																
14																
15																
16																
17																
18																
19																
20																
21																
22																
23																
24																
25																
26																
27																



120215 plate I, I IgG8.xls [Compatibility Mode] - Excel

File Home Insert Page Layout Formulas Data Review View Tell me what you want to do... Sign in Share

Cut Copy Paste Format Painter Clipboard Font Alignment Number Styles Cells Editing

	A	B	C	D	E	F	G	H	I	J	K	L	M	N	O	P
1																
2				end result	cut off											
3	GRA1	1	25.833	6.708	28.44	Negatif										
4	GRA2	2	28.562	8.437	33.62	Negatif										
5	GRA6 (Dü)	3	30.917	10.792	83.21	Negatif										
6	GRA9	4	36.708	16.583	76.13	Negatif										
7	ROP1	5	45.271	26.813	78.83	Negatif										
8	SUB1 CT	6	51.271	34.813	53.01	Negatif										
9	NEG CTRL	7	23.396													
10	POS CTRL	8	36.621													
11	BG 5, 6 & 7, 8	9	16.458													
12	BG 1, 2 & 3, 4	10	20.125													
13																
14																
15																
16																
17																
18																
19																
20																
21																
22																
23																
24																
25																
26																
27																



File Home Insert Page Layout Formulas Data Review View Tell me what you do... Sign in Share

Cut Copy Paste Format Painter Clipboard Font Alignment Number Styles Cells Editing

	A	B	C	D	E	F	G	H	I	J	K	L	M	N	O	P
1																
2				end result	cut off											
3	GRA1	1	29.188	11.684	28.44	Negatif										
4	GRA2	2	28.354	10.750	33.62	Negatif										
5	GRA6 (Dü)	3	31.958	14.354	83.21	Negatif										
6	GRA9	4	41.583	23.979	76.13	Negatif										
7	ROP1	5	49.979	24.167	78.83	Negatif										
8	SUB1 CT	6	40.875	15.063	53.01	Negatif										
9	NEG CTRL	7	23.896													
10	POS CTRL	8	46.875													
11	BG 5,6 & 7,8	9	25.812													
12	BG 1,2 & 3,4	10	17.604													
13																
14																
15																
16																
17																
18																
19																
20																
21																
22																
23																
24																
25																
26																
27																



File Home Insert Page Layout Formulas Data Review View Tell me what you want to do... Sign in Share

Cut Copy Paste Format Painter Clipboard Font Alignment Number Styles Cells Editing

	A	B	C	D	E	F	G	H	I	J	K	L	M	N	O	P
1																
2				end result	cut off											
3	GRA1	1	44.521	24.417	28.44	Negatif										
4	GRA2	2	37.729	17.625	33.62	Negatif										
5	GRA6 (Dü)	3	34.062	13.958	83.21	Negatif										
6	GRA9	4	37.208	17.104	76.13	Negatif										
7	ROP1	5	51.625	33.083	78.83	Negatif										
8	SUB1 CT	6	23.396	4.854	53.01	Negatif										
9	NEG CTRL	7	38.125													
10	POS CTRL	8	42.062													
11	BG 5,6 & 7,8	9	18.542													
12	BG 1,2 & 3,4	10	20.104													
13																
14																
15																
16																
17																
18																
19																
20																
21																
22																
23																
24																
25																
26																
27																

Clipboard: Cut, Copy, Paste, Format Painter

Font: Arial, 10, Bold, Italic, Underline, Text Color, Background Color

Alignment: Wrap Text, Merge & Center

Number: General, Percentage, Decimals

Styles: Conditional Formatting, Format as Table, Cell Styles

Cells: Insert, Delete, Format

Editing: AutoSum, Fill, Clear, Sort & Filter, Find & Select

	A	B	C	D	E	F	G	H	I	J	K	L	M	N	O	P
1																
2				end result	cut off											
3	GRA1	1	32.667	14.365	28.44	Negatif										
4	GRA2	2	27.708	9.396	33.62	Negatif										
5	GRA6 (Dü)	3	32.875	14.663	83.21	Negatif										
6	GRA9	4	22.167	3.855	76.13	Negatif										
7	ROP1	5	26.354	13.208	78.83	Negatif										
8	SUB1 CT	6	22.375	9.229	53.01	Negatif										
9	NEG CTRL	7	16.417													
10	POS CTRL	8	21.083													
11	BG 5,6 & 7,8	9	13.146													
12	BG 1,2 & 3,4	10	18.312													
13																
14																
15																
16																
17																
18																
19																
20																
21																
22																
23																
24																
25																
26																
27																

120215 plate I, I IgG8.xls [Compatibility Mode] - Excel

File Home Insert Page Layout Formulas Data Review View Tell me what you want to do... Sign in Share

Cut Copy Paste Format Painter Clipboard Font Alignment Number Styles Cell Styles Insert Delete Format AutoSum Fill Clear Sort & Filter Find & Select Editing

	A	B	C	D	E	F	G	H	I	J	K	L	M	N	O	P
1																
2				end result	cut off											
3	GRA1	1	78.667	63.375	28.44	Positif										
4	GRA2	2	42.083	26.791	33.62	Positif	over 20									
5	GRA6 (Dü)	3	86.104	70.812	83.21	Positif	over 70									
6	GRA9	4	38.479	23.187	76.13	Negatif										
7	ROP1	5	53.458	41.687	78.83	Negatif										
8	SUB1 CT	6	61.667	49.896	53.01	Negatif										
9	NEG CTRL	7	17.458													
10	POS CTRL	8	110.104													
11	BG 5,6 & 7,8	9	11.771													
12	BG 1,2 & 3,4	10	15.292													
13																
14																
15																
16																
17																
18																
19																
20																
21																
22																
23																
24																
25																
26																
27																

File Home Insert Page Layout Formulas Data Review View Tell me what you want to do... Sign in Share

Clipboard Font Alignment Number Styles Cells Editing

Clipboard: Cut, Copy, Paste, Format Painter

Font: Arial, 10, Bold, Italic, Underline, Text Color, Background Color

Alignment: Wrap Text, Merge & Center

Number: General, Percentage, Increase/Decrease Decimal

Styles: Conditional Formatting, Format as Table, Cell Styles

Cells: Insert, Delete, Format

Editing: AutoSum, Fill, Clear, Sort & Filter, Find & Select

	A	B	C	D	E	F	G	H	I	J	K	L	M	N	O	P
1																
2				end result	cut off											
3	GRA1	1	64.312	32.833	28.44	Positif										
4	GRA2	2	57.146	25.667	33.62	Positif	Cut off over 20									
5	GRA6 (Dü)	3	56.202	24.813	83.21	Negatif										
6	GRA9	4	44.125	12.646	76.13	Negatif										
7	ROP1	5	50.229	26.208	78.83	Negatif										
8	SUB1 CT	6	59.771	37.750	53.01	Negatif										
9	NEG CTRL	7	25.875													
10	POS CTRL	8	92.104													
11	BG 5,6 & 7,8	9	22.021													
12	BG 1,2 & 3,4	10	31.479													
13																
14																
15																
16																
17																
18																
19																
20																
21																
22																
23																
24																
25																
26																
27																

File Home Insert Page Layout Formulas Data Review View Tell me what you want to do... Sign in Share

Cut Copy Paste Format Painter Clipboard Font Alignment Number Styles Cell Styles Insert Delete Format AutoSum Fill Clear Sort & Filter Find & Select Editing

	A	B	C	D	E	F	G	H	I	J	K	L	M	N	O	P
1																
2				end result	cut off											
3	GRA1	1	19.250	2.479	28.44	Negatif										
4	GRA2	2	35.458	18.687	33.62	Negatif										
5	GRA6 (Dü)	3	33.688	16.917	83.21	Negatif										
6	GRA9	4	23.583	6.812	76.13	Negatif										
7	ROP1	5	19.729	917	78.83	Negatif										
8	SUB1 CT	6	23.542	4.730	53.01	Negatif										
9	NEG CTRL	7	13.333													
10	POS CTRL	8	17.792													
11	BG 5,6 & 7,8	9	18.812													
12	BG 1,2 & 3,4	10	16.771													
13																
14																
15																
16																
17																
18																
19																
20																
21																
22																
23																
24																
25																
26																
27																

File Home Insert Page Layout Formulas Data Review View Tell me what you want to do... Sign in Share

Cut Copy Paste Format Painter Clipboard Font Alignment Number Styles Cells Editing

	A	B	C	D	E	F	G	H	I	J	K	L	M	N	O	P
1																
2				end result	cut off											
3	GRA1	1	9.333	-4.646	28.44	Negatif										
4	GRA2	2	30.208	16.229	33.62	Negatif										
5	GRA6 (Dü)	3	30.854	16.875	83.21	Negatif										
6	GRA9	4	93.646	79.667	76.13	Positif										
7	ROP1	5	71.104	56.937	78.83	Negatif										
8	SUB1 CT	6	43.083	28.916	53.01	Negatif										
9	NEG CTRL	7	20.896													
10	POS CTRL	8	18.292													
11	BG 5,6 & 7,8	9	14.167													
12	BG 1,2 & 3,4	10	13.979													
13																
14																
15																
16																
17																
18																
19																
20																
21																
22																
23																
24																
25																
26																
27																

File Home Insert Page Layout Formulas Data Review View Tell me what you want to do... Sign in Share

Cut Copy Paste Format Painter Clipboard Font Alignment Number Styles Cells Editing

Arial 10 A A Wrap Text Merge & Center % +.0 00 -> Conditional Formatting Format as Table Cell Styles Insert Delete Format AutoSum Fill Clear Sort & Filter Find & Select

	A	B	C	D	E	F	G	H	I	J	K	L	M	N	O	P
1																
2				end result	cut off											
3	GRA1	1	21.854	-250	28.44	Negatif										
4	GRA2	2	34.812	12.708	33.62	Negatif										
5	GRA6 (Dü)	3	32.688	10.584	83.21	Negatif										
6	GRA9	4	39.396	17.292	76.13	Negatif										
7	ROP1	5	29.458	6.333	78.83	Negatif										
8	SUB1 CT	6	6.375	-16.750	53.01	Negatif										
9	NEG CTRL	7	9.312													
10	POS CTRL	8	11.708													
11	BG 5,6 & 7,8	9	23.125													
12	BG 1,2 & 3,4	10	22.104													
13																
14																
15																
16																
17																
18																
19																
20																
21																
22																
23																
24																
25																
26																
27																