

CURRICULUM REFORM:

AN OVERVIEW OF THE ENGLISH TEACHING IN INDONESIAN CONTEXT

Undang-Undang Republik Indonesia No. 19 Tahun 2002 tentang Hak Cipta

Lingkup Hak Cipta

Pasal 2:

1. Hak cipta merupakan hak eksklusif bagi Pencipta atau Pemegang Hak Cipta untuk mengumumkan atau memperbanyak ciptaannya, yang timbul secara otomatis setelah suatu ciptaan dilahirkan tanpa mengurangi pembatasan menurut peraturan perundang-undangan yang berlaku.

Ketentuan Pidana

Pasal 72:

1. Barang siapa dengan sengaja atau tanpa hak melakukan perbuatan sebagaimana dimaksud dalam pasal 2 ayat (1) atau pasal 49 ayat (1) dan (2) dipidana dengan pidana penjara masing-masing paling singkat 1 (satu) bulan dan/atau denda paling sedikit 1.000.000,00 (satu juta) rupiah atau pidana penjara paling lama 7 (tujuh) tahun dan/atau denda paling banyak 5000.000.000,00 (lima milyar) rupiah.
2. Barang siapa dengan sengaja menyiarkan, memamerkan, mengedarkan atau menjual kepada umum suatu ciptaan atau barang hasil pelanggaran hak cipta atau hak terkait sebagaimana dimaksud pada ayat (1) dipidana dengan pidana penjara paling lama 5 (lima) tahun dan/atau denda paling banyak 500.000.000,00 (lima ratus juta) rupiah.

Dra. Hj. Djuwairiah Ahmad, M.Pd., M.TESOL.

**CURRICULUM REFORM:
AN OVERVIEW OF THE ENGLISH TEACHING
IN INDONESIAN CONTEXT**

ALAUDDIN UNIVERSITY PRESS

***Curriculum Reform:
An Overview Of The English Teaching
In Indonesian Context***

Copyright@Penulis

Diterbitkan pertama kali dalam Bahasa Indonesia,
Desember, 2012 oleh *Alauddin University Press*

Editor: Abd. Muin

Penata Letak: Habbab Wahsyi

Sampul: AU Press

Perpustakaan Nasional; Katalog Dalam Terbitan (KDT)
*Curriculum Reform: An Overview Of The English Teaching
In Indonesian Context*, 2012

ISBN: 978-602-237-330-8

*Hak Cipta Dilindungi Undang-Undang
Dilarang memperbanyak seluruh atau sebagian
isi buku ini tanpa izin tertulis Penerbit*

Alauddin University Press

Jl. Sultan Alauddin No. 63 Makassar

Telp. 0823 4867 1117, Fax. 0411-864923

au_press@yahoo.com

Sambutan Rektor

*Tidakkah engkau malu pergi ke laut, sementara pulang hanya membawa sekendi air, padahal di dalam laut terdapat begitu banyak mutiara yang terpendam... demikian nasihat puitis Jalauddin Rumi dalam buku *The Sufi Book of Life*.*

Syair inspiratif ini memberikan dorongan bagi siapa saja yang mengabdikan dirinya di dunia pendidikan apalagi di perguruan tinggi untuk menghasilkan dan melahirkan karya-karya akademik yang dapat memberikan pencerahan kepada siapapun. Sebuah ironi, jika orang-orang yang bergelut di dunia perguruan tinggi, ternyata hanya membawa sekendi "air" pengetahuan untuk mengobati dahaga masyarakat, padahal begitu banyak mutiara yang terpendam di dalamnya yang dapat memberi "sinar" kehidupan. Atas dasar inilah, ikhtiar untuk menjadikan kampus UIN Alauddin sebagai kampus peradaban harus terus digulirkan, sebab hanya kampus yang menjadikan orientasi "Peradaban" sebagai basis aktivitas dan tradisi keilmuannya yang akan mampu membawa semangat

perubahan di tengah masyarakat menuju masyarakat madani.

Kampus peradaban yang dicita-citakan hanya bisa terwujud jika pengembangan kultur dan *mindset* akademik lebih relevan dengan suasana dan wadah yang bernama universitas Islam. Sebaliknya, jika orientasi peradaban hanya sebatas jargon dan simbol, maka status "universitas" dan "Islam" akan menjadi beban bagi kita maupun masyarakat. Di satu sisi, UIN akan menjadi universitas pinggiran, sementara di sisi lain, karakter keislaman menjadi hilang. Karena itu, diperlukan usaha sungguh-sungguh untuk mengawal UIN Alauddin mencapai visi dan misinya untuk menjadi *world class university* yang berperadaban.

Untuk mencapai visi itu, maka program GSB (Gerakan Seribu Buku) ini menjadi salah satu langkah strategis memacu sivitas akademika untuk tidak sekadar meneguk "air" pengetahuan di perguruan tinggi, tetapi dapat membawa ribuan bahkan jutaan kendi "air dan mutiara" pengetahuan ke tengah masyarakat. Orang bijak berkata *"Buku adalah pengusung peradaban, tanpa buku sejarah menjadi sunyi, ilmu pengetahuan menjadi mati, dan kehidupan bisa kehilangan arti."*

Oleh karena itu, saya sangat bersyukur kepada Allah swt, atas terselenggaranya program GSB ini, baik tahun I maupun tahun II. Program GSB telah membuktikan kepada publik bahwa UIN Alauddin memiliki kekuatan dan potensi yang cukup besar untuk mewujudkan dan menghantarkan kampus ini menuju kampus peradaban melalui maha karya para civitas akademika. Melalui program GSB ini, potensi sumber daya UIN Alauddin akan terus digali, diapresiasi dan dihargai sehingga melahirkan kreasi, ide dan prestasi.

Selaku Rektor, saya senantiasa berharap agar *tagline* "Peradaban" yang selama ini digulirkan harus menjadi visi dan misi bersama yang tertanam dalam sebuah bingkai kesadaran kolektif bagi seluruh sivitas akademik untuk mewujudkan UIN Alauddin sebagai universitas yang kompetitif dan berkarakter. Untuk itu, tiga agenda besar; *pencerdasan, pencerahan* dan *prestasi* harus menjadi fokus perhatian utama bagi sivitas akademika UIN Alauddin. Ketiga agenda ini dirancang sebagai sebuah strategi untuk menjadikan UIN Alauddin lebih terbuka, dan menjadi pusat kepeloporan pengembangan nilai dan akhlak serta keunggulan akademik-intelektual yang dipadukan dengan pengembangan teknologi untuk membangun sebuah masyarakat yang berperadaban.

Akhirnya, perkenankan saya mengucapkan terimakasih dan penghargaan yang setinggi-tingginya kepada seluruh sivitas akademika UIN Alauddin Makassar yang telah mencurahkan pikiran dan tenaganya dalam menghasilkan karya akademik ini. Semoga gagasan yang dituangkan di dalam buku ini mampu menjadi "air" penyejuk dan pengobat dahaga bagi masyarakat yang haus akan pencerahan, dan dapat menjadi "mutiara" yang memberikan cahaya bagi peradaban.

Samata, 1 Nopember 2012
Rektor

Prof. Dr. H. A. Qadir Gassing HT., MS.

To my beloved mother for her infinite love,
sacrifice, dedication, and generosity
all the days of my life

@may Allah the Almighty grants you 'jannah', amien..@

Preface

Bismillahirrahmanirrahim

Alhamdu lillahi rabbil alamin, I would like to express my most profound gratitude to Allah SWT for His blessing and mercies so that I could start and finish writing this book as a means for sharing my little piece of knowledge and experience as an English educator for more than seventeen years. Shalawat and salam may peace be upon to the greatest prophet Muhammad SAW who has guided us into the right path of life.

This book consists of six chapters with the starting point (Chapter I) is an introduction of the book. Chapter II is concerned with the nature of curriculum consisting of some definitions of curriculum from some experts, the curriculum policy in Indonesia and its implementation, and the stakeholders in curriculum development implementation. Chapter III discusses the demand and context for curriculum reform in Indonesia, the English Language Teaching curriculum in Indonesian education system, and the new policy of ELT curriculum in Indonesia. Chapter IV moves the focus to more specific aspect of the curriculum policy and implementation which covers the rationale of curriculum policy and implementation, some major stakeholders and

roles, and curriculum implementation model. Chapter V analyses some factors that affect the curriculum implementation consisting of external and internal factors affecting the curriculum implementation. Finally at the last part of this book, Chapter VI, contains the concluding remarks of what have been discussed in the book.

In writing this book, I am indebted to the Rector of Alauddin State Islamic University of Makassar and the committee of *Gerakan 1000 Buku UIN Alauddin Makassar Tahun 2011* whose chance and financial aid have made it possible for me to finish this book.

I would like to devote my very special thank to my beloved parents AGH Drs. Muhammad Ahmad and Hj. Sitti Fatimah (the late) for their sincere prayers for my safety and success, particularly to my beloved mom to whom this book is dedicated to, for her infinite love, sacrifice, dedication, and generosity all the days of my life. I cannot thank you enough for what you have given me in this life. May Allah SWT grants you both His 'jannah', amin ya rabbal alamin.

Finally, I must express my great and sincere gratitudes to my beloved husband, H. Jemma, S.Pd., M.Pd., for always giving me support and encouragement, and sharing his experiences in teaching English at schools; as well as to my beloved kids Ahmad Fachryzal Jemma and Asyrifah Ainun Jemma whose love, understanding, and hopes accompanied me all the time.

Makassar, September 2012

Djuwairiah Ahmad

Table Of Contents

<i>Sambutan Rektor</i>	<i>v</i>
<i>Preface</i>	<i>xi</i>
<i>Table Of Contents</i>	<i>xiii</i>
Chapter 1 - Introduction.....	1
Chapter 2 - The Nature of Curriculum	17
A. Definitions of Curriculum	17
B. Curriculum Policy and Implementation	30
C. Stakeholders in Curriculum Development and Implementation.....	63
Chapter 3 - ELT School-Based Curriculum:	
A Curriculum Reform.....	67
A. Demand and Context for Curriculum Reform	67
B. ELT Curriculum in Indonesian Education System	74
C. New Policy of ELT Curriculum	87
Chapter 4 - Curriculum Policy and Implementation	107
A. Rationale of Curriculum Policy and Implementation	107

B. Major Stakeholders and Roles	109
C. Curriculum Implemetation Model.....	119
Chapter 5 - Factors Affecting The Curriculum	
Implementation	123
A. External Factors Affecting Curriculum	
Implementation	124
B. Internal Factors Affecting Curriculum	
Implementation	135
Chapter 6 - Concluding Remarks	153
Bibliography.....	159
The Author	177

Chapter 1

INTRODUCTION

The strong commitment of Indonesia's government to develop human resources is a testimony of Indonesia development. For example, when Indonesia entered its Second 25 Year Long Term Development Plan (PJP II) in 1994/95, the emphasis of development was directed toward human resources development (HRD). The aim of the development has been attained excellence in mastering science and technology. This emphasis covers with all sectors and sub-sectors of national development.

For most Indonesians, the quality of human resources is equated to the mastery of science and technology. With the emphasis on human resource development, English language teaching has received special attention among scholars, practitioners, businessmen, and government officers. This attention is due to the role of English as a

means of global communication, and, importantly, the transfer of science and technology. As a result, the mastery of this language is highly sought after. Schools and universities now offer more teaching hours for English among the other subjects outlined in the national curriculum.

English language teaching has a special position in schools. It is, as a language other than the Indonesian language and local languages, compulsory for Indonesian students mainly from lower secondary schools to university level. According to a decree of the Minister of Education and Culture (now called the Ministry of National Education) number 096 of 1967, English is stipulated as the first foreign language for all Indonesian students from lower secondary education to university levels. The main objective of the instruction is to provide students with good command of English so that they are able to participate in various academic activities, most of which are conveyed in English.

Due to the importance of this subject, the curriculum for English is outlined nationally. The curriculum covers, for example, how this subject should be taught and what materials should be used. In the curriculum, more teaching hours for this subject are offered in accordance with the level of the schools (e.g. lower secondary and upper secondary) and the grade (e.g., grade one, two, or three). However, some believe that ELT curriculum is too rigid which may lead to problems in its implementation in the classroom (Jazadi, 1999a, 1999b).

Since English language teaching in Indonesia began formally, there has been a number of curricula implemented for the teaching of this subject. They are the 1968 curriculum,

the earliest one, followed by the 1975, 1984, 1987, and 1994 curricula. Each of these has certain emphases and approaches to achieve the objectives of ELT in Indonesia (Nio, 1993:8-12; Huda, 1999:118-125;140). For example, the 1968 curriculum took an audiolingual approach. This approach focuses the teaching on the sentence structures (less on meaning) by oral drilling, reading aloud, and listening. The 1975 curriculum, on the other hand, used mastery learning approach. The mastery learning approach that still considered a structural approach has more focus on pre-tests and post-tests which require additional time. The 1984 curriculum focused on the communicative approach. The communicative approach, which is concerned with speaking and writing, has a focus on reading. The 1987 curriculum also focused on the communicative approach, complementing of the 1984 curriculum. Finally, the 1994 curriculum stresses the meaningful approach. According to Huda (1999:140-7), the meaningful approach shares a number of features of the communicative approach as adopted from the previous curriculum.

In spite of the number of the curricula used over the years, satisfactory results in students' language mastery have not been achieved. This situation leads to the consideration to introduce English to primary school students. The introduction of this subject is considered as an alternative solution to answer the unsatisfactory results of the students' English proficiency. This consideration was based on a number of assumptions and reasons. Although there was much debate at that time, mainly questioning the readiness in allocating the subject in the primary education system

(Kompas on-line, 1996a, 1996b), the introduction of English in primary schools have been approved.

With regard to education, Indonesian legislation requires that all children should attend nine years of compulsory schooling (six years in primary school and three years in junior secondary school). The medium of instruction in schools is Bahasa Indonesia, the national language. English is a compulsory subject throughout junior secondary and senior secondary schools, although many primary schools also teach English as an additional subject.

The nine years of education in primary and junior secondary school are (nominally) free of charge. Central government provides a grant known as BOS (*bantuan operasional sekolah*, school operational support), which is calculated and paid quarterly via district education offices. According to this formula a rural primary school, for example, will receive a BOS grant of IDR397,000 (GBP28 or USD44) per year for every enrolled pupil. This central government grant is expected to cover 70 per cent of school costs (excluding teacher salaries); the remaining 30 per cent is supposed to be covered by a matching school operational support grant from the district government.

Actual participation in primary schools is reasonably high, with a net enrolment ratio in 2008 of 96 per cent. In junior secondary schools, the gross enrolment ratio in 2008 was 89 per cent while the net enrolment ratio for all secondary schools was 68 per cent (UNESCO 2010). However, the push to achieve universal participation in nine years of primary and junior secondary education is a relatively recent phenomenon. Consequently, the average

Indonesian adult has spent only 5.7 years in school (UNDP 2010).

The overall achievements of the Indonesian education system are rather disappointing. The findings of the 2009 Programme for International Student Assessment (PISA) survey of what 15-year-olds who are still in school know and can do (OECD 2010) show that, in reading ability, Indonesia comes at 56th place out of 64 countries. In mathematics, Indonesian 15-year-olds come in 59th place (jointly with Tunisia) while in science, too, Indonesia is in 59th place.

To summarise: (1) Indonesia – with its very large population – falls in the middle of the range of countries with medium human development; (2) National per capita income figures are uncertain and may be misleading, but it is clear that rural craftspeople can expect to earn at most IDR750,000 per month (GBP53, USD82) – and possibly much less than that – whereas urban factory labourers can take home about IDR1.3 million (just under GBP100, USD150) per month on average; (3) Three people in every ten exist below the poverty line, making do with IDR11,000 (GBP0.80, USD1.25) per day or less; (4) Compulsory education lasts for nine years and about 96 per cent of children attend primary school, but the participation rate for junior secondary school is lower; (5) Schools receive annual grants from central government, which are worth about IDR400,000 (GBP28, USD44) per pupil for primary schools and IDR575,000 (GBP41, USD63) per pupil for junior secondary schools; (6) On an international measure of educational outcomes, Indonesia performs poorly compared to neighbouring countries in East and Southeast Asia.

The Soeharto-era government of Indonesia (1966–1998) required that all Indonesian nationals should attend Indonesian schools. Access to international schools operating in the country was strictly restricted to the children of expatriates. Following the collapse of the Soeharto government and the liberalisation of Indonesian society, demands were made by the aspirant upper middle class that their children should also be allowed to study in international schools. The true international schools, however, were – and still are – unwilling to open their doors too widely.

In the face of this reluctance of international schools to admit the children of Indonesian nationals and in response to market demand, some very expensive fully Indonesian private ‘international’ schools were established. These cater for the extremely wealthy and are beyond the reach even of the average middle class family. There was still, then, an unfulfilled demand from the middle classes for ‘international-like’ education.

In a development which surprised many observers, Law No 20 of 2003 on the National Education System (Republik Indonesia 2003) introduced the concept of ‘International Standard Schools’ (SBI, sekolah bertaraf internasional). The law required that central government and/or local governments should work to establish ‘one International Standard School at every educational level’ (Republik Indonesia 2003, Article 50, Clause 3).

This was followed in 2005 by Government Decree No 19 on National Standards for Education, which specified that central government should co-operate with local government to provide at least one school per district at the

primary level and at least one at the secondary level which could be 'developed to become an International Standard School' (Republik Indonesia 2005, Article 61, Clause 1).

In the same year, the Ministry of National Education's Strategic Plan for 2005–2009 stated:

In order to improve the nation's ability to compete ... central government and the relevant rural district government [kabupaten] or urban district government [kota] [need to] develop 112 international standard primary, junior secondary, senior secondary and vocational secondary schools throughout Indonesia. (Depdiknas 2005)

This was followed in 2007 by the appearance of government guidelines, which for the first time defined what is meant by 'International Standard School' and which laid down criteria for quality assurance. The definition states that an ISS is:

A school ... which fulfils all the National Standards for Education and which is further enriched by taking into consideration the education standards of one member nation of the Organisation for Economic Co-operation and Development (OECD) and/or another advanced nation which has particular strengths in education such that it achieves competitive advantage in the international forum. (Depdiknas 2007:7)

Apart from what have been described previously, this book will thoroughly describe perceptions of English language teachers about the School-Based Curriculum which is regulated by the government in response to the quality

improvement of the teaching in Indonesia. As it is a new regulation, different interpretation will emerge among teachers as the main stakeholders of curriculum development and its implementation. Some may believe that it has been prescribed as it is in the attachment of the decree, while others maintain their conception that it needs development. The different perspectives among teachers in perceiving of what is intended by the government of the School-Based Curriculum will lead to different interpretations and will normally end up with a question of a mismatch in the level of implementation.

Misperceptions about a revised curriculum among teachers is not without reasons. As the newly revised curriculum, the School-Based Curriculum provides “a new paradigm with which to create a working mechanism regarding curriculum decision-making in schools” (The Ministry of National Education, 2006:2). The implementation of School-Based Curriculum requires the presence of qualified educational personnel in all regions who are able to put the curriculum documents into practice. As a consequence, educational personnel in general, and teachers in particular, will have greater flexibility in assigning curricula at the classroom level. The teacher’s role in curriculum decision-making at individual schools will require a greater level of expertise. Teachers with qualified training and teaching experience will presumably be able to carry out the curriculum for students who are social and cultural different. Therefore, transferring the power of responsibility from the central government to local government in decentralization context, in general, and national curriculum reform, in particular, need time for all

related stakeholders, in this case the school teachers, to accept the change with appropriate knowledge and skills.

Considering the important role of teachers in implementing reform, and reviewing the history of teacher education in Indonesia, it is evident that teachers' involvement in curriculum decision-making at the school level has been minimal. This is primarily because the use of a centralized curriculum has been mandatory since Indonesia proclaimed its independence in 1945. Teachers have had to teach according to the specific curriculum mandates of each region. For more than twenty years, Indonesian educational reform policies, particularly in the developing of curricula for primary and secondary education have focused on enhancing the overall quality of life through a centralized system for the purpose of national development. For example, the reform of basic education in the 1990s at the national level comprised various areas, including: expanding basic education; enhancing science and technology; improving the quality of textbooks and teachers' guides; developing the effectiveness of in-service teacher training; promoting a favorable school and classroom environment; and decentralizing the curriculum (Yulaelawati, 2004). However, with respect to curriculum development in Indonesia, relevant studies have shown that these educational reforms, which continued into the 1990s, actually limited the effectiveness of curriculum planning and implementation (Theisen, Hughes and Spector, 1991).

The current of Indonesia's education reform has been directed towards decentralization. The government administration's goal is to design an education program that more adequately prepares pupils for the job market, thus

providing the human resources necessary to ensure sustainable national development (The Ministry of National Education, 2004). In this context, educational decentralization reform in Indonesia is not only a precondition for financial assistance, it also involves the delegation of control of the schools to local level and a greater intention to redistribute power, increase efficiency, and create greater sensitivity to local cultures. As Fuhrman and Mallen (1990) argue, curriculum reform concerns primarily with control and empowerment, in which control strategies function as the mechanism for increasing the efficiency of the educational system and empowerment strategies that address teachers' competence and teachers' commitment.

Since late seventies, educators and researchers in general education have recognized the problematic nature of implementing a proposed curriculum (Snyder, Bolin, and Zumwalt, 1992). The process of curriculum implementation has been described as a "black box" (O'Sullivan, 2002), in which challenges to implementation can arise. The complexities of and incongruent relationship between curriculum policy and its practice are indicators of the implementation problems (Elmore and Sykes, 1992). According to Bekalo and Welford (2000), a discrepancy often exists between what was intended and what is enacted. The view that these two objectives should match poses challenges for policymakers, administrators, and teachers in particular (Connelly and Lantz, 1991).

Problems of various kinds arising from curriculum implementation have been recognized as inevitable, and therefore the implementation is inherently more complex

than what people can anticipate (Brindley and Hood, 1990; Fullan and Stiegelbauer, 1991). This complexity can be perceived from several aspects, with stakeholders at different levels interpreting the curriculum policies differently than as originally conceived. *First of all*, policymakers produce policies with good intentions, but unforeseen and often unwanted results may occur as the policies are interpreted by the local implementing institutions. *Second*, as the policy interpreters, middle-level administrators may have their own interpretation of the policies. They are likely to encounter institutional or contextual constraints; therefore, their attempts at implementing the policies from the top may get stuck in real operations. *Third*, the implementation may also be confounded by the resistance of the primary stakeholders, i.e. the teachers (Williamset al., 1994). Teachers may view the revised curriculum either negatively or simply differently than as was the intent of the policymakers (Karavas-Doukas, 1995), or view the innovations favorably but not incorporate the curriculum changes into their day-to-day classroom teaching for various reasons (Gahin and Myhill, 2001). This non-implementation or semi-implementation of curriculum is prevalent in both English as a second language and foreign language contexts. Researchers have found teachers adopting and using what they consider to be appropriate teaching methods and suitable instructional materials behind closed doors, skirting the guidelines laid down in the syllabus (Anderson, 1993). Despite guidelines from curricular documents stipulating what is to be taught, teachers often continue in their previous methods.

Studies of the impact of curriculum implementation on educational outcomes tend to adopt three different approaches (Snyder et. al., 1992). *First*, the fidelity perspective determines “the degree of implementation of an innovation in terms of the extent to which actual use of the innovation corresponds to intended or planned use and to determine factors which facilitate and inhibit such implementation” (Fullan and Pomfret, 1977:340). *Second*, the mutual adaptation perspective (Berman and McLaughlin, 1980) studies how the innovation has been adapted during the process of implementation. The *third* perspective shifts its focus from studying the implementation and adaptation of proposed curricula to studying curriculum enactment. Studies with this last focus have examined how a curriculum is shaped through the evolving constructs of teachers and students (Paris, 1989). These three approaches have been used in the fields of general education and of language education to explore the effects of curriculum implementation on both teachers and students.

There has been an increased interest in curriculum implementation in language education. Many studies have been undertaken on English as a Second Language (ESL) curriculum implementation to improve teaching and learning and on how to manage curriculum innovation in the ESL context. However, only a few empirical studies focusing on English as a Foreign Language (EFL) curriculum implementation have actually been conducted.

Addressing the issue of how the teachers respond to the implementation of a new government curriculum policy in Indonesian context, particularly issues like curriculum diversification, syllabus development, learning materials,

and students' assessment is also rare. As the reforms regarding the decentralization of certain educational functions and processes in Indonesia continue, understanding the impact on curriculum reform and the changes at local school levels will be essential. It is important to notice that this curriculum refers to the national standard of education; it is supposed to be followed by over 40,000 secondary schools in Indonesia and potentially affects approximately 33,5 millions students registered each year.

Some issues regarding the new revised curriculum has been identified, namely: (a) a mismatch of teachers' perceptions and government's intention on the new revised curriculum is inevitable; (b) qualified educational personnel in all regions who are able to develop School-Based Curriculum and put the curriculum documents into practice is required; (c) transferring the power of responsibility from the central government to local government in decentralization context needs time for all related stakeholders to accept the change with appropriate knowledge and skills; (d) there must be large constraints teachers encounter in their attempts at implementing the School-Based Curriculum; and (e) the questions of how the intended curriculum interpreted and implemented by the English teachers so far.

Through the identification and exploration of the factors related to the policy and implementation of the School-Based Curriculum of ELT, this book intends to assist language policymakers, administrators, and practitioners develop a better understanding of secondary school English curriculum development, of the impact of this curriculum on the English as a foreign language teaching and learning, and

of the challenges it has posed for teachers, with a view to improving English language education in Indonesia.

This book is also important in several aspects. *First*, it provides information to Indonesian education policymakers for future planning and innovation with regard to English teaching at secondary school. These policymakers include the Ministry of Education and culture, as well as several institutions at the national level, such as the General Directorate of Basic and Secondary Education, the National Agency for Education Standards and the Teachers Association of the Republic of Indonesia. In addition, it demonstrates the appropriateness of applying and adapting the curriculum theories of Western educators to the Indonesian EFL context through research evidence of the impact of the curriculum implementation on classroom teaching and learning. It will help Indonesian language policymakers, administrators, curriculum specialists, and material developers gain a better understanding of the secondary school English curriculum development and of the challenges that EFL teachers at the secondary level have been facing. The book also helps to inform policymakers and administrators on how to aid classroom teachers in meeting their mandate for both language education improvement and curricular reforms in Indonesia.

Second, from the investigation of how the secondary school English curriculum is executed in the secondary context of Indonesia, this book provides lessons to be learned within the field of language curriculum implementation in other ESL and EFL contexts. As language curricula share commonalities, it will also contribute to the understanding of language curriculum implementation in

general. For curriculum planners as well as specialists in other cross-cultural contexts, it has potential utility in terms of lessons learned and challenges encountered.

Third, this book provides further insight into the complexity of curriculum implementation. Researchers have often conducted implementation studies on how a proposed curriculum has been experienced and adapted by both teachers and students. Focusing on a more comprehensive picture of how policies regarding secondary school English education were formulated, designed, and executed, this book explores the discrepancies at different levels among different groups of stakeholders during the implementation process. In this way, this book highlights the complexity of the implementation of curriculum reforms in the EFL context in Indonesia.

Chapter 2

THE NATURE OF CURRICULUM

This section has three reviews: the origin and definitions of curriculum, conceptions of curriculum policy and its implementation, and the stakeholders involved in the reform. The purpose is to establish a theoretical basis for further discussion of the factors or variables affecting curriculum implementation, particularly in English language teaching.

A. Definitions of Curriculum

The origin of the word “curriculum” can be traced to Latin. Its first meaning was *a running, a race, or a course* and its secondary meanings were *a race-course or a career* (Connelly and Lantz, 1991:15; Egan, 2003:10). During the early years of the twentieth century, most educators held

onto the traditional concept and referred to curriculum as “the body of subjects or subject matters set out by teachers for students to cover” (Tanner and Tanner, 1995:151). Later, however, the definitions developed and expanded to mean either *a plan, an experience* or *a methodological inquiry* (Taba, 1962; Foshay, 1969 quoted in Bloom, 2006:online; Westbury and Steimer, 1971, quoted in Connelly and Lantz, 1991).

In a narrow sense, curriculum is defined as *a plan for learning* (Taba, 1962), or a general over-all plan of the content or specific materials of instruction that the school should offer the student by way of qualifying him for graduation or certification or for entering into a professional or vocational field (Good, 1959, quoted in Connelly and Lantz, 1991:15). According to Pratt (1994:5), curriculum refers to *plans* for instructional acts, not the acts of instruction themselves. He states that curriculum is analogous to the set of blueprints from which a house is constructed. A curriculum can be viewed as a blueprint for instruction. For teachers, curriculum is often a statement of what the school authorities, the state government, or some group outside the classroom requires the teacher to teach (Doll, 1996).

In a broad sense, curriculum can be described as an *experience*. Pinar et. al. (1995) contended that it was Dewey (1902) who brought the concept of experience to the definition of curriculum, a concept still operative today. Jackson (1992) asserts that Dewey not only accepted the standard definition of curriculum as *a course of study* but also accepted the underlying implication of seeing curriculum as knowledge. This knowledge is organized along subject matter lines and eventually must be mastered by students. Dewey (1902, quoted in Jackson, 1992:6) differentiated

between experience and content. He argues, “the problem is just to get rid of the prejudicial notion that there is some gap in kind (as distinct from degree) between the child’s experience and the various forms of subject matter that make up the course of study”.

Following Dewey, Franklin Bobbitt’s (1918:43, quoted in Jackson, 1992:7) assertion of curriculum as being “educative experience” was influential. He defines curriculum in the following two ways: (1) it is the entire range of experiences, both undirected and directed, concerned in unfolding the abilities of the individual; or (2) it is the series of consciously directed training experiences that the schools use for completing and perfecting the unfoldment. Pinar, et al., (1995) pointed out that Bobbitt’s concept expanded the curriculum definition by introducing a distinction between “directed” and “undirected” experience with the former denoting in-school experience and the latter out-of-school experience. After Dewey and Bobbitt, scholars continued to clarify the definition of curriculum but, to a large extent, their expositions reflected the strong influence of both Dewey and Bobbitt. For example, Foshay (1969, quoted in Bloom, 2006:online) and Tanner and Tanner (1995) asserted that curriculum refers to all the experiences that a learner has under the guidance of the school. Moreover, curriculum was further defined as a “methodological inquiry,” “exploring the range of ways in which the subject matter elements of teacher, student, subject, and milieu can be seen” (Westbury and Steimer, 1971, quoted in Connelly and Lantz, 1991:15).

The conventional meaning as “subject matter” or “a plan of the content” is too narrow, ignoring other features

such as out of school activities that curriculum encompasses. However, the expanded meanings such as “educational experience” seem too broad, containing all the entities connected with school life. In addition, these conceptions, employed in general education, are mainly for children or adolescents in primary or secondary schools. Although these definitions offer a starting point for discussing problems in implementing curricula, more specific and relevant definitions from ELT are required for further investigation. In fact, language education studies have already started to develop alternate definitions from those of general education studies.

The concepts of curriculum in ELT have focused on the distinction between syllabus and curriculum, in addition to defining the term curriculum itself. According to Nunan (1988:14), “curriculum is a large and complex concept, and the term ‘curriculum’ is used in a number of different ways. In some contexts it is used to refer to a particular program of study (for example the ‘science curriculum’ or the ‘mathematical curriculum’). Furthermore, Nunan used ‘syllabus’ to refer to the selecting and grading the context, and ‘curriculum’ more widely to refer to all aspects of planning, implementing, evaluating and managing an educational program.

In the United States, the term ‘curriculum’, rather than ‘syllabus’, is used to refer to all aspects of the planning, implementation and evaluation of curriculum. The term is also used for a particular course of instruction. In Britain, the term ‘syllabus’ is used to denote that part of curriculum activity concerned with the ‘what’ of the curriculum. It can be said that the term ‘curriculum’ incorporates those

elements designated by the term 'syllabus' along with considerations of methodology and evaluation. In relation to language teaching, the key elements for consideration within the curriculum are as follows: initial planning including needs analysis, grouping learners, goal and objective setting, selection and grading of content, methodology (which includes materials and learning activities), and finally assessment and evaluation (Nunan, 1988:14).

Robertson (1971:566) clarified the terms, saying, "The curriculum includes the goals, objectives, content, processes, resources, and means of evaluation of all the learning experiences planned for pupils both in and out of the school and community through classroom instruction and related programs". To him, syllabus was "a statement of the plan for any part of the curriculum, excluding the element of curriculum evaluation itself". Yalden (1987) attached considerable significance to this distinction. She emphasized that in the Western ESL context, language courses are often offered for a particular group of learners who may require an alternative syllabus with unique goals, objectives, and resources.

Dubin and Olshtain (1986:3) pointed out the common belief that curriculum includes a syllabus, but not vice versa. Krahnke (1987:2) maintained that "a syllabus is more specific and more concrete than a curriculum, and a curriculum may contain a number of syllabi". White (1988:4) discussed the confusion over the distinction between the two terms and especially mentioned their different usage in the USA and Britain. In Britain, a syllabus referred to "the content or subject matter of an individual subject," whereas curriculum meant "the totality of content to be taught and aims to be

realized within one school or educational system". In the USA, curriculum tended to be a synonym of syllabus. Furthermore, Rodgers (1989:26) contended, syllabi, which prescribe the content to be covered by a given course, form only a small part of the total school program. Curriculum is a far broader concept as all those activities in which children engage under the auspices of the school. This includes not only what students learn, but how they learn it, how teachers help them learn, using what supporting materials, styles and methods of assessment, and in what kind of facilities.

From the aforementioned discussions regarding the conceptions of curriculum, it is clear that there are variations in the definitions of curriculum. To guide this current research in exploring the intended and the enacted EFL curriculum at the senior secondary schools in Makassar, the two terms – syllabus and curriculum – are operationally defined as follows:

1. Syllabus is a statement of the plan for subject matter, which includes the goals, objectives, contents, processes, and resources, as in senior secondary school English teaching syllabus in Makassar.
2. Curriculum is all those activities in which students engage under the auspices of the senior secondary schools. This includes what students need to learn (syllabus), how teachers help them learn (pedagogy), using what supporting materials (textbooks) and methods of assessment (testing), in what kind of facilities and employing what means of evaluation to improve the program.

The above definitions cover the main elements of language curricula that White (1988), Brown (1995), and Richards (2001) outlined in their work, in which facilitative or hindering factors or variables that may affect curriculum implementation can be identified.

Curriculum is typically considered to be the official written document from a higher authority, such as the local school district or school board. Such a document is seen as a mandated template that must be followed by all teachers. Unfortunately, in many cases, teachers are supposed to follow such a mandated curriculum.

1. Historical Definitions of Curriculum

- a. "A sequence of potential experiences is set up in the school for the purpose of disciplining children and youth in group ways of thinking and acting. This set of experiences is referred to as the curriculum" (Smith, et al., 1957).
- b. "A general over-all plan of the content or specific materials of instruction that the school should offer the student by way of qualifying him for graduation or certification or for entrance into a professional or vocational field" (Good, 1959).
- c. "A curriculum is a plan for learning" (Taba, 1962).
- d. "All the experiences a learner has under the guidance of the school" (Foshay, 1969).
- e. "The planned and guided learning experiences and intended outcomes, formulated through the systematic reconstruction of knowledge and experience, under the auspices of the school, for the learner's continuous and willful growth in person-social competence" (Tanner and Tanner, 1975).

- f. "Curriculum is often taken to mean a course of study. When we set our imaginations free from the narrow notion that a course of study is a series of textbooks or specific outline of topics to be covered and objectives to be attained, broader more meaningful notions emerge. A curriculum can become one's life course of action. It can mean the paths we have followed and the paths we intend to follow. In this broad sense, curriculum can be viewed as a person's life experience" (Connelly and Clandinin, 1988).

Definitions 1 – 5 are typically those that relate to how teachers and administrators view curriculum. In fact, these seem to underlie the assumptions about schooling that are held by children and parents. In general, these five definitions and their related assumptions about schooling and learning tend to undermine effective integration. However, definition #6 may provide a view that is more consistent with an integrated curriculum that is more meaningful, relevant, interesting, and engaging.

2. *Basic Types of Curriculum*

According to Bloom (2006), several basic types of curriculum are as follows:

- a. ***Explicit*** – This type of curriculum is what appears in documents and teachers' plans. It is closely aligned with the historical curriculum definitions 1-3 and 5.
- b. ***Implicit (or hidden)*** – This type of curriculum has to do with how particular assumptions about schooling and learning manifest in practice. For example, when a teacher has her or his desk at the front of the classroom and "teaches" from this area, the message that is being

learned by students is that the teacher is in control, including being the knowledge authority, and is the center of attention. The teacher is also of central importance. Another example involves the value of particular topics that is communicated implicitly. Such values can be communicated by time spent, by tone of voice, or by how the topic is treated (e.g., trivialized or marginalized).

- c. **Null** – The null curriculum is what is not taught. Not teaching some particular idea or sets of ideas may be due to mandates from higher authorities, to a teacher's lack of knowledge, or to deeply ingrained assumptions and biases. Teachers and schools may not teach that Christopher Columbus slaughtered many of the native peoples he encountered when he "discovered" the Americas. Many teachers are under pressure not to teach evolution.

3. *Contexts of Curriculum*

Typically, curriculum documents focus on specific subject matter content. However, if we are to take seriously broader notions of curriculum, such as that described by Connelly and Clandinin (1988), then we must contend with multiple contexts that affect curriculum, students, and teachers.

Questions:

- a. Which of the contexts within the overall context of curriculum and instruction do not, cannot, and/or should not appear in curricular documents at the district, state, or national levels?

- b. Which of the contexts within the overall context of curriculum and instruction typically appear in curricular documents at the district, state, or national levels?
- c. When dealing with the context of subject matter:
- d. Who decides on what content should be included?
- e. Why is certain content more important (included) than other content (not included)?
- f. Who should decide on what content to include?
- g. How should subject matter learning be approached (e.g., as material for problem solving and inquiry, as material to be memorized, etc.)?
- h. What are the implications of such a view of curricular contexts for teaching, learning, and schooling?
- i. Based on the above figure, how should curricular development occur?
- j. What are the implications of the center of contextual conjunction for how we conceive of curricular enactment, learning, teaching, and schooling?

4. *Trivialization of Curriculum*

Curriculum and therefore learning and participating in school can be trivialized. Such trivialization can lead to rendering schooling irrelevant and meaningless for many students. A summary of trivialization appears below (see Wood, 1990)

- a. Teaching Strategies
 - 1) Fragmenting knowledge into lists of facts, etc.
 - 2) Mystification of knowledge – complexities are too great for students to understand
 - 3) Omission of controversial, anomalous, or contemporaneous material – “Dumbing Down”

- 4) Defensive Simplification – ritual of seeming to deal with topics while not actually teaching them

Contributing Factors

- 1) Teacher deskilling: "Teacher Proofing" the curriculum
- 2) Mandated curriculum and standardized testing
- 3) Credentialling schemes
- 4) Bureaucratic rather than professional and educational norms as basis for operation of schools: "Neutering of Teachers" – taking away teachers' right to make instructional and curricular decisions
- 5) Requirements for teachers to follow prescribed practices in both the content and implementation of the curriculum without the power to influence the policies governing these prescriptions

5. Curriculum Analysis

In designing or adapting curriculum, it is important to formulate a perspective of where your curriculum and teaching is situated in terms of various orientations and philosophical or theoretical frameworks (see previous pages on curriculum background. The following information may help you further define your own position or the position of curriculum documents with which you must contend.

Questions:

- What assumptions, beliefs, and values do you have about how people learn?
- How do these assumptions, beliefs, and values manifest in students' language and actions?

- How do these assumptions, beliefs, and values manifest in curricular standards, curricular content, instructional strategies, and school organization?
- How do your answers to the previous questions affect student and teacher identities, participation, meaning, relevance, access to knowledge, and access to skills?
- What assumptions, beliefs, and values do you have about teaching?
- How do these assumptions, beliefs, and values manifest in students' and teachers' language and actions?
- How do these assumptions, beliefs, and values manifest in curricular standards, curricular content, instructional strategies, and school organization?
- How do your answers to the previous questions affect student and teacher identities, participation, meaning, relevance, access to knowledge, and access to skills?
- What assumptions, beliefs, and values do you have about what knowledge means?
- How do these assumptions, beliefs, and values manifest in students' and teachers' language and actions?
- How do these assumptions, beliefs, and values manifest in curricular standards, curricular content, instructional strategies, and school organization?
- How do your answers to the previous questions affect student and teacher identities, participation, meaning, relevance, access to knowledge, and access to skills?
- What assumptions, beliefs, and values do you have about student and teacher behavior?

- How do these assumptions, beliefs, and values manifest in students' and teachers' language and actions?
- How do these assumptions, beliefs, and values manifest in curricular standards, curricular content, instructional strategies, and school organization?
- How do your answers to the previous questions affect student and teacher identities, participation, meaning, relevance, access to knowledge, and access to skills?
- What assumptions, beliefs, and values do you have about student and teacher thinking?
- How do these assumptions, beliefs, and values manifest in students' and teachers' language and actions?
- How do these assumptions, beliefs, and values manifest in curricular standards, curricular content, instructional strategies, and school organization?
- How do your answers to the previous questions affect student and teacher identities, participation, meaning, relevance, access to knowledge, and access to skills?
- What assumptions, beliefs, and values do you have about assessment?
- How do these assumptions, beliefs, and values manifest in students' and teachers' language and actions?
- How do these assumptions, beliefs, and values manifest in curricular standards, curricular content, instructional strategies, and school organization?
- How do your answers to the previous questions affect student and teacher identities, participation, meaning, relevance, access to knowledge, and access to skills?

- What assumptions, beliefs, and values do you have about nature of schooling?
- How do these assumptions, beliefs, and values manifest in students' and teachers' language and actions?
- How do these assumptions, beliefs, and values manifest in curricular standards, curricular content, instructional strategies, and school organization?
- How do your answers to the previous questions affect student and teacher identities, participation, meaning, relevance, access to knowledge, and access to skills?
- What assumptions, beliefs, and values do you have about purpose of schooling?
- How do these assumptions, beliefs, and values manifest in students' and teachers' language and actions?
- How do these assumptions, beliefs, and values manifest in curricular standards, curricular content, instructional strategies, and school organization?
- How do your answers to the previous questions affect student and teacher identities, participation, meaning, relevance, access to knowledge, and access to skills?
- How do all of your responses relate to or differ in terms of race, gender, ethnicity, social class, perceived educability, and sexual orientation of students (and teachers)?

B. Curriculum Policy and Implementation

Since the book explores the intended and the enacted curriculum at the senior secondary school level, it involves the issue of language policies and their implementation. To better understand how language policies are formulated and

executed in the EFL context of Indonesia, there is a need to identify what is meant by curriculum policy. As Elmore and Sykes (1992:186) contended, curriculum policy is “the formal body of law and regulation that pertains to what should be taught in schools”. They argued that research on curriculum policy was intended to explore “how official actions are determined, what these actions require of schools and teachers, and how they affect what is taught to particular students”. They pointed out the increasing government presence in curriculum policymaking over the past few decades in all areas, which is also the case in the Indonesian secondary education system. Educational reforms and innovations have revealed the supreme power of the government in policymaking. Government has been responsible for changes in mandatory course requirements. It has also been responsible for the raised graduation standards, for the development and implementation of new curricula, and for the increased attention to the curricular impact on testing and writing of textbooks. Therefore, the government’s role is becoming more and more prominent to encourage the development of curriculum at school level.

Furthermore, Elmore and Sykes (1992) recognized and identified the complexities and incongruent relationship between curriculum policy and practice. They postulated that once curriculum policy is formulated, developed, and carried through the school system to the classroom, the execution mechanisms will have certain impacts on teaching practices, which in turn will exert considerable influence on student learning. However, classroom teachers may not implement the curriculum policy as intended, due to constraints such as their entrenched beliefs, negative

attitudes, inappropriate or inadequate skills and knowledge, and lack of available resources at local levels. This noted dichotomy between policy and implementation implies that curriculum policy shapes teachers' classroom practice through its execution, which may require teachers to change their teaching materials, methodological approaches, or pedagogical values (Markee, 1997). Teachers may also change the policy during its implementation. They redefine, reinterpret, and modify their teaching behavior based on their classroom realities. They may welcome the policy due to its change and innovation, but still find it extremely difficult to put it into practice, and eventually choose not to implement it.

In fact, Elmore and Sykes (1992) drew our attention to a very important issue of implementation in understanding the confusion and frustration that curriculum policy often brings to its users when put into actual practice. Snyder, et al., (1992) argued that research on curriculum implementation is relatively new, and that even the term "implementation" could not be found in curriculum literature before the late sixties. An alternative one, installation, was used instead to refer to the execution of curriculum policy in practice. Snyder et al. claimed that implementation studies only started to become a focus of research after extensive investigations on change and innovation in the late 1960s and the early 1970s. From the 1970s through the 1990s, much more attention was directed to the implementation problems involved in translating proposals into practice by scholars, researchers, and practitioners. At present, research on curriculum implementation is more prevalent.

Berman (1978:160) defined implementation as “the carrying out of an authoritative decision, i.e., a policy choice”. Pal (2006) described it as the execution of the developed policy. Referring to a policy initiative in all fields of education, Pal (1997:146) explained that policy implementation was “the stage of policymaking between the passage of a legislative act, the issuing of an executive order, the handing down of a judicial decision, or the promulgation of a regulatory rule, and the consequences of the policy for the people whom it affects”. To him, implementation was only one of the important phases, from policy formulation, policy analysis and development, to policy implementation, evaluation and dissemination. Delaney (2002) also argued that among the various phases of policymaking, implementing the policy in question is the most challenging part.

Fullan and Park (1981:6-10) asserted that implementation is “changing practice” that “consists of alterations from existing practice to some new or revised practice in order to achieve certain desired student learning outcomes”. They alleged that implementation is considered changing practice because the emphasis is on actual use rather than on assumed use. Actual use in fact entails whatever change may occur in practice. That is why the terms of change, innovation, reform, revision, and renewal are all frequently used in the context of describing implementation. They elaborated further, stating that change would likely occur in curriculum materials, teaching approaches, and beliefs or understandings about the curriculum and learning practices (also in Fullan and

Stiegelbauer, 1991:66), and that all of these changes are aimed at effectively attaining some educational goal.

Based on the conceptual work of Fullan and Park (1981), Elmore and Sykes (1992) Snyder, et al., (1992), and Pal (1997) on curriculum policy and its implementation, the operational definition for curriculum/language policy used in the current book is as follows:

1. Curriculum (or language) policies refer to the statements of aims, goals, objectives, and guidelines that pertain to what and how language should be taught and how students should be assessed in the institutions of higher learning.
2. Curriculum implementation is the execution of the developed curriculum policies, which may require a modification in teaching practices in order to achieve desired student learning outcomes.

If we examine the history of language teaching in Indonesia, it has undergone constant change and innovation, particularly in the aspect of curriculum, as well as the method of teaching to be applied in teaching English at schools. Because of dissatisfaction with the structure-oriented 1975 curriculum, the Ministry of Education and Culture of the Republic of Indonesia decided to replace it with the so-called 1984 curriculum, which was based on communicative approach to language teaching. Since then teachers of English have encountered a serious problem, namely a lack of the knowledge and skills required being able to implement the curriculum.

Realizing this problem, in 1985 the government launched a teacher development program known as PKG project (short for 'Pemantapan Kerja Guru': or *Enforcement of*

the Work of Teachers) advocating a communicative approach to language teaching (hereafter labeled the PKG Approach), the aim of which reads:

"To help teachers in Indonesian Junior and Senior High Schools to develop their confidence, personal and professional skills, as well as to devise materials and techniques which promote student-centered, student-active learning in the classroom?" (Tomlinson, 1990:25).

However, after attending the program, where they were introduced to the principles of communicative approach, the teachers realized that there were further problems, among which are:

- a. The available teaching materials including the package books, the obligatory course books published by the Department of Education, were in fact not in line with the approach advocated;
- b. The PKG English Program could not, because of resources acquired, involve all teachers of English at the same time. Teachers would, therefore, have to devise their own materials;
- c. Teachers were required to teach structure, reading, vocabulary, conversation, and writing, for which the time allotted was only 4 X 45 minutes per week.

After ten years of operation of the 1984 curriculum, the Department of Education again realized that the curriculum had some weaknesses: (1) the overlap between some subjects, (2) the lack of freedom of teachers to choose their own materials, (3) the lack of time allotted for the English subject, (4) it was not fit the vast progress in science and technology, and (5) it could not cope with the huge changes

in the world: social, political, and economic situations. Those require changes and innovation in language teaching.

Consequently, the government decided to launch another curriculum termed 1994 curriculum, which was officially implemented in the 1994/1995 academic year (commencing July 1994). The 1994 curriculum is based on the same approach as that proposed in the 1984 curriculum. It has merely been given a new label, the 'meaningful approach' (*pendekatan kebermanaknaan*), to avoid misunderstanding. This approach suggests that it is not necessary that English only be the medium of instruction in secondary schools in all situations. Rather, instruction could involve a combination of English and Indonesian depending on the specific objective of a particular lesson as well as the condition of the school and students in general.

The 1994 curriculum for English as a foreign language with underlying principles is, however, still understood and implemented comprehensively. The curriculum embodies thematic/topical, integrated, communicative, and meaningful principles.

Further, the writer puts forward the principles underlying the communicative and meaningfulness approach based on the GBPP Bahasa Inggris 1994, namely:

1. Language is a means of expressing meaning through grammar and vocabulary. This implies that teachers should not ignore grammar and vocabulary in the classroom interaction, although not explicitly stated in the curriculum.
2. Meanings are determined by both linguistic and situational contexts supported by cross cultural understanding. Thus, it is also important for the teachers

to know the culture of the native speakers of the target language.

3. Meanings can be conveyed through different expressions and the other way round.
4. Learning a foreign language is learning to communicate orally and in writing. Thus, it is not true to say that communicative and meaningfulness approach neglect any of the four language skills.
5. Students' motivation is the main factor that determines their success.
6. Teaching materials will be more meaningful if related to the students' needs, interest, and their future. Teacher should use authentic materials (which are not written specifically for educational purpose).
7. Students are the subjects of learning-teaching process. Teacher should create situation in which students can practice using the target language.
8. Teacher's roles are as facilitator, organizer, conductor, and motivator.

With reference to the principles underlying the 1994 English curriculum for Senior High School (SMU) and the basic principles underlying the communicative and meaningful approach, it can be seen that there are a number of aspects and basic concepts in teaching English as a foreign language in Indonesia that should be mastered and implemented in teaching English in the classroom. There is a big question whether or not the teachers of English in secondary schools have implemented the recommended 1994 English curriculum and applied the required communicative approach comprehensively in their teaching. As a matter of fact, the result of the teaching of English in

Indonesia, particularly in South Sulawesi Province is unsatisfactory.

It is said that curriculum is the sine qua non of the quality in education. Nevertheless, it is also known that curriculum is not the only factor affecting the quality of education. There are still other factors. Talking about curriculum, so far, Indonesia has changed its national curriculum several times, namely in 1968, 1975, 1984, 1994, 2004, and 2010. The 1994 English Language Teaching Curriculum/Guidelines of ELT Program for Senior High School (Kurikulum Pengajaran Bahasa Inggris 1994/GBPP SLTA) has been widely used in Indonesian SHS as the national curriculum since 1994. This curriculum was revised in 1999 and now it is called the Guidelines Supplement for 1994 curriculum. The revision is made due to four weaknesses found in this curriculum, namely: (1) the openness of the learning materials structures and organization; (2) the disagreement between the themes and the examples of the communicative expressions; (3) the overlapping of some functional skills, and (4) the lack of clarity of some learning objectives.

In this curriculum or document (see the attachment), the ELT objectives are aimed at improving students' ability in English communication, which covers with four basic skills (reading, listening, speaking and writing). Language elements (grammar, vocabulary, pronunciation and spelling) are used to support the students' ability to communicate orally and written in different contexts. The syllabus itself is notional, functional, thematic and structural in nature. The approach is communicative or meaningful and the assessment is integrative.

As far as the curriculum development concerned, it is clear that this curriculum is not learner-centered since the learners are not involved in designing the curriculum to meet with their needs and interests as Nunan (1991) said. However, this is not totally ineffective as the class structure in Indonesian SHS is not homogenous. The classes consist of 40 to 45 students and they have different personal characteristics, and they come from different social levels and cultural backgrounds. The teachers in charge often meet some difficulties in developing the curriculum based on the learners' needs and interests. Therefore, as a national curriculum, the learners' needs and interests are accommodated generally rather than individually.

Competency Based Curriculum or 2004 curriculum was officially launched in 2004 in trial version. The socialization of this curriculum was started in 2003 in some senior and junior high schools in Indonesia. This curriculum is to replace the 1994 curriculum. ELT competency based curriculum is a systematic and a strategic framework to build up the communicative and discourse competence. This implies that the ELT competency based curriculum helps building up all its supporting components such as linguistic, speech act, socio-cultural, strategic competence and a set of discourse substances.

For this reason, we can say that an ELT teacher in teaching the language could not start her or his teaching by asking, "What sort of materials should I teach today?" but rather "What sub-competence should my students acquire today?" Let's say, it has been set up that students are expected to be able to ask for help politely in certain

appropriate contexts orally. In this case, the teacher should start searching any related materials to achieve the objectives or competence assigned from any possible sources.

Text books are not the only sources prescribed materials to support the curriculum. Any related English sources which are suitable to language acquisition are, therefore, liable to use. Compared to 1994 curriculum, this curriculum mainly concerns on multiple competences that should be acquired by students. The implication to this phenomenon is that there will be a great shift from cognitive dominancy in learning a language to mastering of certain competences in language. The basic competence is a minimal competence that students should achieve in respect with knowledge, ability, skill, attitude and basic behavior to master the concepts of main materials and indicators of the minimum standard of learning outcomes.

Mastery learning, remedial teaching and text/genre based approach to materials, are mandated in the 2004 curriculum. Mastering certain competences is related to limited and contextual materials but with deeper and continuous comprehension. The application of CBC implies that: (1) the time allotment is decreasing; (2) the presentation of the materials is integrated makes it more meaningful; (3) classroom based assessment and competency based assessment, which means that the assessment should be based on students' mastery of certain competences according to their types and levels of education; and (4) competent teachers of English, which means that the teachers should improve their basic competences in teaching English all the time.

Evaluating this curriculum thoroughly and comprehensively is not a simple process and it needs more time to be carried out. Due to the purpose of this first assignment (as a learning process), the curriculum will be evaluated based on what Weir and Roberts (1994:5) in Richards (2001:288) said as formative evaluation. The purpose of this evaluation is to find out what is working well and what is not, and what problems need to be addressed (Richards, 2001:288).

To be able to address the problems that have been identified and to improve the delivery of the program, there are at least eight questions that need to be answered (Richard, 2001:288):

1. Has enough time been spent on particular objectives?
 - In the second column of this document (see the attachment, pg. 16–20), two or three themes should be finished quarterly. One quarter consists of 12 weeks (excluding four ineffective weeks for enrichment, exam period and assessment, and break) and four class hours within a week. It means that teachers should finish all the themes (compulsory) in 12 weeks or for 48 hours where one hour is 45 minutes. In other words, teachers are due to complete one theme (four or more sub-themes) within four weeks or simply said one sub-theme per three hours fulltime. Three hours time is not adequate to discuss and to practice the tasks in a sub-theme for all kinds of language skills. The only thing that can be done is discussion at glance. Often, she had to ask students to finish five or six tasks consecutively without having a fully understanding about the task itself not even the content. The teachers

are still doing this due to the policy from the Department of National Education officers to achieve the curriculum target within a period. Teachers have no choice except to follow the regulation. Formally, the learning objectives are 80% to 100% achieved but factually are not. We can easily see the proof from the national standard of achievement where the learners' achievement in English is still below the standard.

2. Have the placement tests placed students at the right level in the program?
 - So far, the mainstream schools have never conducted a placement test to place students at the right level in the program since the students are not placed according to the English proficiency level. The only way the schools have been using to place the students in one level so far is based on the students' overall grade of all subjects' reports. All students are placed and treated in one general and fixed standard.
3. How well is the textbook being received?
 - In 1999, she analyzed the national textbook that must be used by all SHSs in Indonesia. The 30-pages of analysis was based on the checklist of Communicative Approach textbook analysis from the book called "Making the Most of Your Textbook" by Neville Grant. The findings were shocking that all the components were neither appropriate nor adequate to support the communicative approach stated in the curriculum. The other thing is the lack of validity of the other supplementary textbooks written by different local

authors, which aimed their books at commercial purposes only. Teachers, on the other hand, do not have spare time to design a course book to meet the curriculum needs since they have to focus more on achieving the curriculum target by the end of the periods.

4. Is the methodology teachers are using appropriate?
 - Ideally, teachers are responsible using various methods to be able to achieve a particular learning objective. However, they have some difficulties in implementing the appropriate method the right time since they have to deal with large class size, different students' characteristics, limited textbook or resources and very limited time. As a result, teachers mainly use classical methods like grammar translation and give more emphasis on reading and writing skills more often while the approach is actually communicative. They do not have enough time to focus more on other skills, as they believe that the final test will never measure the students' ability to speak and listen.
5. Are teachers or students having difficulties with any aspect of the course?
 - A survey of the application of different aspects of Communicative Approach in teaching English at SMUs (SHS) and SLTPs (SHS) in South Sulawesi, was conducted by five scholars in Makassar in 2000. The findings were the same as the assumption as practitioners of ELT in Indonesian context that most

of the English teachers in this province do not have any idea of what communicative approach is.

They do not have adequate knowledge about authentic materials, they use teacher-dominated drill and practice mode of teaching, they do not have enough understanding on how to design a communicative assessment, and the worst part is that almost none of them is able to speak English.

In fact, the functional skill is aimed at improving the ability to speak. If they have any chance to use the expressions in their everyday life as the language of conversation, it would be very useful. However, we have to be realistic that speaking English is not a tradition in Indonesian culture. As a result, speaking expressions are becoming a reading discourse. Based on her own experience as an English teacher, she could see the indication that students did not have significant difficulties in understanding English grammar and reading comprehension. Almost all of them can do the tasks properly. When it comes to oral practice or other productive skills, they are likely to make more and more mistakes. This problem is probably true to other EFL learners.

Another problem encountered by students is mastering vocabularies. The recommended vocabularies to be learnt by students are related to the themes plus the list of vocabularies in the curriculum. To me, this will be overloaded to students. The curriculum recommends students to recognize the meaning of the vocabularies in other contexts passively. She believed that in this case they would

not have any difficulties to read a text to certain level or a level up (i + 1) or comprehensible input for acquisition, according to Krashen (1985) using these vocabularies. However, what happened during the class time is that the vocabularies are introduced only at glance due to the very limited time. Since then, they will never be able to use those vocabularies in the appropriate contexts.

6. Are students enjoying the program? If not, what can be done to improve their motivation?
 - It is said that this curriculum is using meaningful approach since the words and the expressions are only meaningful in their contexts and situations. Furthermore, the students' motivation is the main factor in determining the success of the students learning and the degree of the motivation is mostly determined by the meaningfulness of the learning materials and the students' learning activities. In my mind, motivation is not determined by the meaningfulness but by interest (requirement #2 of optimal input for second language acquisition). The theme like 'health for example, is probably meaningful to students since they know what the health is. My question is, are they really interested in aspects related to health? If we give them questionnaire to know students; interest, are they going to say that health, family life, light technology, geography and so on as the themes that they are interested in? In my mind, the meaningfulness neither automatically arouse their interest nor their motivation. Thus, although the selected themes are related to their actual life, teachers still have to do extra

work to stimulate the students' interest to familiar and meaningful topics to students. It means that teachers should prepare themselves to think the best way of presenting the meaningful materials to become interesting so that students bound to read the texts more and more and understand the terms and sentence structure or grammatical points in sort of texts.

7. Are students getting sufficient practice work? Should the workload be increased or decreased?

- As far as the quantity concerned, the practice work is more than enough for students. There are maximum 8 themes that should be finished in 36 weeks with minimum 32 sub-themes. Each sub-theme consists of 14 practice works roughly that should be done by students in 4 hours class time (about 180 minutes including apperception and pre-activities). Besides, they still have to do some homework and project after hours. For the highly motivated students, they will have extra time to take private course in the afternoon and engaged with various English meeting clubs during Sundays. Various practice works given by teachers are mainly focusing on reading skills rather than the others. As a result, students have to deal with a very competitive atmosphere among the peers to finish their tasks. Some of them like cheating, doing it early in the morning together with other friends in classroom before the class hours better than doing it at home alone. If I asked them why they did that,

they would say that they had other work from other subjects (16 subjects in each level).

This way is not effective for both students and teachers. Therefore, the workload should be decreased to make them able to focus more on particular task and objective. Another way to overcome this problem is to increase the time of doing the practice work.

8. Is the pacing of the material adequate?
 - In communicative approach, we recognize integrative and spiral ways of pacing the materials. The pace of the materials should be integrative and not sequential from one skill to other skill activities and from the easiest to the most difficult ones. In my experience, we were not flexible to choose our own ways of pacing it since we had to deal with fixed textbook and very limited time. I might be able to do the recommended paces required in communicative approach but I will not be able to finish all the materials on time. Even though we realize that the discussion and activities are inadequate, as civil servant teachers, we have to compete to finish the curriculum target on the government racetrack. Therefore, the national curriculum system should be changed with another curriculum, which suits the diversity in Indonesia.

As the conclusion, it could be emphasized that the ELT in Senior High Schools should be improved. The way to improve it is not only changing the existing curriculum or adding more time and decreasing the

curriculum load, but also improving teachers' competencies to be more creative and innovative. Teachers should be able to change a boring theme to an interesting and meaningful theme. Through teachers' creativity and good willing, students are expected to be more interested and motivated to learn English.

Giving more (60%) emphasis on reading and writing skills for Indonesian mainstream school contexts is not very wrong. We have to realize that the Indonesian atmosphere is not very conducive to accommodate listening and speaking skills. We cannot find any place in Indonesia that is using English as tool of communication. The government has issued a regulation to ban the English naming system in public places to protect the Indonesian and 731 local languages from vanishing. However, people are still encouraged to be able to read and write in English due to the global era. In term of speaking and listening, people are encouraged to have it from any commercial English course that I assumed as an economic pressure in education world.

C. Stakeholders in Curriculum Development and Implementation

From curriculum policymaking to its implementation in secondary schools, at each stage there are various stakeholders (i.e. those involved in curricular innovation) at different levels during the process. These stakeholders, identified by Fullan and Stiegelbauer (1991), consist of government, trustees, principals, parents and community, teachers, and students. Tanner and Tanner (1995) added other individuals or groups to this list. These included public and private interest groups, media, private foundations,

external testing agencies, publishers, business and industry, researchers, and authors of curriculum materials. These combined lists reveal that many stakeholders are involved in curriculum policymaking and its subsequent implementation.

Markee (1993:230) mentioned that the actual participants in the implementation of any given curriculum innovation vary from context to context. Under a specific context, participants “tend to assume certain social roles which define their relationships with other participants”. Lambright and Flynn (1980) identified five respective roles for participants in the innovation process: adopters, implementers, clients, suppliers, and entrepreneurs. Kennedy (1988), a researcher in applied linguistics, used these same distinctions to analyze the roles of participants at a Tunisian university in North Africa. He suggested that officials in the Minister of education, deans, and heads of departments are adopters in curriculum implementation of English language teaching. Teachers are implementers, students are clients, curriculum and materials designers are suppliers, and the expatriate curriculum specialists are entrepreneurs or change agents. Kennedy (1988) also pointed out that the roles that participants play may not be mutually exclusive.

Widdowson (1993) pinpointed the importance of taking into consideration the teachers’ roles in relation to other participants, such as policymakers, researchers, materials designers, and learners involved in the educational process. He raised the question of what the proper professional role of teachers should be, what provisions should be made to sustain and develop teachers in that role,

and whether it is more concerned with the macro-level of curriculum planning or with the micro-level of classroom practices. In fact, the irreplaceable role of teachers in curriculum development, especially at the implementation phase, has been increasingly recognized by policymakers, researchers, and other stakeholders. “Teachers make important decisions with consequences for students. In the classroom, they do so behind closed doors. No one can control all of the specific decisions that teachers make, even during a highly specified instructional episode” (Tanner and Tanner, 1995:619). Failure to involve teachers in the formulation of curriculum policy could result in a situation where teachers change, reject, or ignore curriculum innovation when it is to be implemented in their classrooms.

In the Indonesian secondary education context, these stakeholders include the Ministry Education and Culture, the Directorate General of Primary and Secondary Education, the National Agency for Education Standards, the Education Board, the provincial and regency of Education and Culture Agency, the Materials Development Team, the Testing Team, the Teacher Associations, publishers, teachers, parents, and students as the true curriculum implementer. As in other educational contexts, teachers are definitely the most important stakeholders in carrying out the intended curriculum proposed by the policymakers in Indonesia. They decide if, and then how they will develop and implement the required curriculum. Therefore, their roles should be intensively overlooked.

In light of curriculum implementation policy, the nature of stakeholders—teachers, principals, and supervisors—has to be considered important regardless of

their roles in the implementation of a school curriculum. Moreno (1999: 569-577) argues:

To understand the process of curriculum change, particularly in the beginning of the process, it should promote a basic understanding by all participants. The involvement of all stakeholders is required through open dialogue in order to recognize the contributions made by each and to agree on a common language for the discussion. A mutual understanding of what is written in a new curriculum is necessary for ensuring that all stakeholders communicate clearly and work together productively.

However, in the process of curriculum reform, schools have been strongly resistant to any reorientation that is markedly different from what has been accomplished previously. If curriculum change does occur, it is a slow and almost unconscious process; attempts to make practicable certain ideal visions of personal growth, social life, or intellectual activity have run head on into institutionalized manifestations of school life when they use traditional and all too limited modes of conceptualizing their concerns (Apple, 1973). The term curriculum, in this context, is understood not only as a prescribed text but also as a discursive field which includes guidelines or suggestions for constructing cultural authority within a particular society and plays a central role in contemporary educational reform (Pinar et al., 1995).

To comprehend a new paradigm of curriculum change, stakeholders need ample time (Moreno, 1999). It is a change at the personal level and those affected should be allowed

ample time to accept and understand the changes. Such curriculum change has also created teacher concerns during its implementation. Pritchett (1993) agreed that the degrees of success of the changes are dependent upon the individual perspective accepting the change. Research conducted by Adleman and Walking-Eagle (1997), which focused on a key element in implementing an innovation, found that teachers need time in order to comprehend the purpose of the innovations, review the outcomes that might be expected, discuss the proposed new approach among their colleagues, and practice using the innovations themselves. Research also identified that failure of implementation, especially in the large scale, is often related to the decision to introduce the change rather quickly, without allowing for proper preparation and practice.

Moreover, teachers always faced the conflict of rapid implementation versus the lengthy time needed in order to fully implement such education reform. Concerns were particularly critical when the innovations required teachers to update their knowledge and skills (Adleman & Walking-Eagle, 1997). However, Coleman (1990, in M. Fullan, 2001) argued that a school's time requirement is not only in order to transfer information, but also to develop "social capital" and "intellectual capital" in the school. Coleman (1990:17) further explains:

...termed 'social capital'—to help produce citizens who have the commitment, skills, and disposition to foster norms of civility, compassion, fairness, trust, collaborative engagement, and constructive critiques under conditions of great social diversity.

Schools also need to develop intellectual capital—problem solving skills in a technological world—so that all students can learn.

Teachers, as the close implementers at schools, should understand clearly the fundamental changes as well as the messages behind curriculum reform, so that, in turn, they may pass that information on to their students and in a larger context to the schools. Therefore, the recognition of a time factor was an essential prerequisite of the effective implementation of change (Hord, et al., 1987). However, but also typical, the decision to introduce change was generally accomplished in a rapid manner, which did not provide opportunities for proper preparation and practice of the implementation. This rapid approach conflicted with the need for a long-term period of several years in order to fully implement such education reform and created concerns for teachers, particularly when innovations required them to learn new skills or update their knowledge.

The necessity of time in order to implement change properly was emphasized while defining the need for change to occur over a longer period of time rather than be considered a short-term specific event. With regard to the process of reform Fullan & Stiegelbauer (1991:17-18) commented:

First, the length of time taken to come to a decision to actually reform is too long; second, not all schools are involved in the reform, nor do all schools expect to be improved by the reform; and third, it takes three, six, or even eight years to achieve the results expected from the reform, but these results are still fragile.

Therefore, recognizing that time is also a key factor in implementing change was an essential prerequisite of its effectiveness (Hord, et al., 1987). Providing time for acceptance and for practice of the changes enhanced teacher self-efficacy, thereby reducing teacher concerns, such as adequate resources.

The process of implementing change affects a teacher's perceptions of his/her expertise. Therefore, teachers are considered to be self-efficacious. In response to this self-efficacy, Bandura (1977) noted that efficacy expectations were a major determinant in people's choices of activities: how much effort they spend, and how long they will keep trying in stressful situations.

Personal teacher efficacy was demonstrated in discussions regarding changes that affect the teachers themselves, the effect change has on a teacher's acceptance of it, and a teacher's understandings of the results of the change. Self-efficacy, therefore, can be described as how teachers feel about themselves when experiencing change. The consequence of change involves the teacher's acceptance of and preparation for the change (Bandura, 1977).

Regardless of a teacher's acceptance of and preparation for change, Fullan and Hargreaves (1992) agreed that reform would not be successful until education leaders and teachers own the change process, accept the change, and have a working knowledge of how to implement the change. A teacher's expertise regarding specific reform was seen as critical— if teachers were to implement the change successfully. They agreed that change involves a teacher's acceptance of and preparation for the change. Reform would not be successful unless both the administration and

the faculty understand the change process, accept the changes, and have a working knowledge of how to implement them. Therefore, the need for expertise regarding specific curriculum reform is critical if teachers are to implement.

As the implementers of change, teachers bear the burden of responsibility for its success. In curriculum reform, the largest share of responsibility for implementation and improvement is placed on those who deliver the curriculum, the classroom teacher. However, their role and expertise in the reform is often limited to the classroom, with no real opportunity to participate in the development of the new curriculum (Cavelti, 1995). Cuban (1993) emphasized the impact of the teacher's personality on the curriculum. Cuban claimed there were four different types of curricula: official (government); taught (teacher); learned (student); and tested (government).

The claim was that typically none of the four curricula were truly synchronized and thus the impact of any curriculum reform was significantly reduced.

One reason given for this lack of alignment according to Edwards (1993), "Local educators did not have a sense of ownership in curriculum reform and often remained comfortable with their own efforts at improving education" (pp. 85-88). Regarding other ways to present reform, strong arguments exist against implementing reform in schools where teachers were not involved in the decision-making and their opinions and participation were not invited.

In such cases, teachers who had no voice in curriculum reform should not be responsible for the negative consequences of the reform efforts (Sarason, 1990).

Teachers' retention positively impacts reform. This includes empowering teachers by giving them more influence over the development of policies. It includes providing teachers with opportunities to develop curricula and work with administrators on school and/or district policy, and providing them access to relevant professional development. Shen (1998:81-84) argued, "Administrative support was defined as providing the aforementioned empowerment opportunities" Further, Tell (2000:1-8) noted, "Teachers, regardless of their years of experience, need the opportunity to develop their expertise as educators". Teachers' participation in the development of school policies, including curriculum, was critical to teachers believing that their expertise and opinions were valued by the school administration.

Principals mired in the top-down administrative approach experienced higher teacher attrition rates than those who engaged teachers in the decision-making process (Hope, 1999: 54-56). Administrators who invited teachers into discussions and empowered teachers increased those teachers' commitment to their profession. Barth (2001:443-449) commented, "These administrators trusted their teachers, as demonstrated by teacher participation in curriculum development. Moss and Fuller (2000: 273-274) also added, "Administrators who supported teachers by giving them their trust developed teachers who became innovative in the classroom".

1. Some related approaches to curriculum policy implementation

In this section, the writer explains two perspectives: cognitive implementation and fidelity-mutual adaptation

and curriculum enactment perspective. The arguments are: First, the cognitive perspective sees that a key dimension of the implementation process is whether and in what ways implementing agents come to understand their practice, potentially changing their beliefs and attitudes in the process (Spillane, 2002).

Second, curriculum policy implementation can be seen as how far curriculum can be implemented as intended policy and how implementers can adapt the policy, and how the implementer or teachers and students shape the curriculum policy.

a. Cognitive implementation perspective

Most of educational reform efforts that seek to deeply and positively change classroom practices have been notoriously unsuccessful. Fewer studies (Weatherley & Lipsky, 1977; Cohen & Ball, 1990; Tyack & Cuban, 1995;) reported reforms that impacted schools, and researchers suggested that policy influences teachers' practice regarding teachers' ability to shape policy--teachers interpret, adapt, and even transform reform as they implement it. The cognitive implementation perspective assumes that individuals assimilate new experiences and information through their existing knowledge structures (Spillane, et al., 2002). The policy, from this perspective, comes to mean for that agents depend largely on their repertoire of existing knowledge and experience to implement changes.

Curriculum policy is the formal body of law and regulation that pertains to what should be taught in the schools (Elmore & Sykes, 1992), and focuses on issues of content in school subjects as well as on ideological responses to one traditional curriculum question: what knowledge is of

the greatest worth? (Pinar, et al., 1995 & Apple, 2004). The core of education policy concerns very much how to determine what children need to learn (Schubert, 1986).

Curriculum policies, historically, have flowed down “from authoritative sources through the medium of the school” (Pinar, 1995). Nevertheless, as schools became intermediate places of reform, teachers’ voices were not fully involved in the reform (Hargreaves, 1996). This is because teachers, like students, were viewed as passive recipients rather than as valid, authoritative sources of curriculum knowledge (Fosnot, 1989:7; Kliebard, 2002:135-136).

Based on this perspective, the policy messages are vague as they filter down through the various levels of the education administration. The implementer or local education administrators have always been seen as relatively passive of conduits of national policy (Spillane, 2002). Further Spillane argued that this simplistic approach to local policymaking is common also in the scholarly literature, which has largely disregard the role of school districts in educational reform. This perspective attempts to fill the gap between the policy message and the role of local education administrators by demonstrating the active and critical roles played by local policy-makers in interpreting and shaping the policy, which involves three core elements, e.g., the individual implement agent, the situation in which sense-making occurs, and the policy signals (Spillane, 2004).

With respect to three core elements of interpreting and shaping policy, the first component involved mechanisms of comprehension and sense-making to an analysis of implementers making sense of policy and the complex practices of learning and teaching. The second component

considered how aspects of the situation influence what implementing agents notice and how they interpret what they notice. A third component is the policy. Although policy might be treated as one element of the situation, Spillane (2004) singled it out because of its special significance in considering issues of implementation.

The study, regardless of the design challenges for policymakers, involves representing ideas about instruction in ways that enable the implementing agent's sense-making. Inherent in this task is a critical tension between the abstract and the concrete in communicating the ideas.

Spillane (2004) adopted a cognitive perspective when he analyzed the implementation process of Mathematics and Science teaching reform in Michigan between 1992 and 1996. This perspective demonstrates how agents (education personnel at school) of the implementation process make sense of the policies upon which they act. Spillane (2004:6-7) argued, "Based upon the conventional account, policies fail to be implemented because the policy is muddled or weak, or because it does not fit with the interests of utility-maximizing local officials".

However, the implementation of reforms in the Michigan classrooms sought tremendous changes. Based on this study, Spillane (2004:29) concluded, "The standard reform was not a matter of "adding to, subtracting from, or shuffling", rather it required "reconceptualization," e.g., procedural knowledge (i.e., "following predetermined steps to accurately compute correct answers") to a curriculum that balances procedural and principled knowledge (i.e., conceptual understanding)". This shift, according to him, had to be manifested in the classroom practice reform.

b. Fidelity-mutual adaptation-and curriculum enactment perspective

Several approaches to or perspectives of curriculum implementation can be used to determine to what extent curriculum reform should be implemented in schools: (1) fidelity perspective; (2) mutual adaptation; and (3) curriculum enactment. The fidelity perspective was the first generation of curriculum research, and examined and measured the implementation of the goals and objectives of a written curriculum (Posner, 1992). Mutual adaptation, on the other hand, considered teachers as the key to curriculum concerns by studying how the innovation is adapted during the implementation process rather than measuring the degree to which the innovation is implemented as planned (Berman & Pauley, 1975; McLaughlin, 1976; McLaughlin, 1987).

Curriculum enactment, in contrast to the two other perspectives, focuses on studying how the curriculum is shaped by the evolving constructs of teachers and students.

The fidelity perspective sees curriculum knowledge as being created primarily outside the classroom by experts who design and develop the curriculum innovation. Fullan and Pomfret (1977:340) assume:

...the main intent is to determine the degree of implementation of an innovation in terms of the extent to which actual use of the innovation corresponds to intended or planned use and to determine factors which facilitate and inhibit such implementation.

Curriculum change, based upon the fidelity perspective, is conceived of as a linear process, with teachers

implementing the innovation as developed in the classroom. The curriculum is then evaluated to determine whether the planned outcomes have been achieved: the implementation is successful when teachers carry out the curriculum as directed. The teachers, according to this perspective, are considered to be the policy recipient (Darling-Hammond, 1990:234). The teacher's role in the implementation process is that of consumer— one who should follow the directions and implement the curriculum according to those possessing curriculum knowledge have designed it. They are recognized as being critical to the success of the curriculum implementation. The curriculum cannot achieve its aims or be fairly evaluated unless the teacher implements it in the manner in which it was intended to be implemented. It can be concluded here that school curricula would be implemented as intended if there were adequate training prior to the start of the implementation process, with support and monitoring during the stages of implementation.

The mutual adaptation approach is seen as a curriculum implementation process whereby adjustments to a curriculum are made by both curriculum developers and those who actually use it in the school or classroom context. This implies a certain amount of negotiation and flexibility on the part of both designers and practitioners. Tyree (1993) examined studies using the mutual adaptation approach in order to determine how policy and individual teacher practice interrelated, for it was acknowledged that teachers have always had "considerable discretion" in spite of state policies (p.34). Similarly, McLaughlin (1987) examined what happens to the curriculum depending upon the individuals

throughout the policy system who interpret and act on them. In this way, the process of policy diffusion did not result in either uniform implementation or uniform change.

The fidelity perspective views curriculum knowledge as something created outside the school; mutual adaptation researchers, in contrast, whether practical or critical in orientation, tend to see curriculum knowledge as one facet of a larger, complex social system that cannot be taken for granted. Practical researchers, in this particular case, are likely to see change as a linear process. Critical researchers' orientations, on the other hand, are likely to see the change process as convoluted, nonlinear, and as unpredictable as it is complex (Snyder, et al., 1992).

However, researchers who follow the mutual adaptation perspective have a different type of perception than those researchers categorized as having a fidelity perspective. The mutual adaptation perspective, according to the application of the social sciences theory of education, assumes that implementation should involve adjustments regarding the needs, interests, and skills of the participants and organizations, as well as in project goals and methods. Bird (1986:46), in response to this emergent perspective, argues, "Mutual adaptation has an agreeable political and social flavor; it grants a measure of deserved respect both to the proponents and to the adopters of an innovation and therefore lets them meet on the equal terms". The role of teachers, similar to the fidelity perspective, is a determinant factor because their input in the curriculum is required if the curriculum is to be successfully implemented in the particular settings.

Curriculum enactment, the third perspective, views curriculum as educational experiences jointly created by student and teacher. According to Fullan (1992), the curriculum enactment perspective underlying the change does not exist merely in the observable alterations in behavior, but is also rather a personal developmental process, both for teacher and student (in Snyder, et al., : 418). Therefore, curriculum that is enacted in the classroom has a particular meaning different from, which is written in a curriculum document.

The curriculum enactment perspective regards the curriculum as what is being implemented or lived out in the classroom from the point of view of the teachers and others.

Beyond that, curriculum can be defined as the meaning that students take away from their classroom experiences not what happens there. The term curriculum, from the enactment's perspective, can be exemplified as "curriculum as lived" (Aoki, 1990) and "curriculum is something experienced in situations" (Connelly & Clandinin, 1988:6). Cornbleth (1990:5) sees curriculum implementation as "what actually occurs in the school classrooms, that is, an ongoing social process comprised of the interactions of students, teachers, knowledge, and milieu".

Therefore, the success of curriculum implementation demands relate to the understanding and acceptance of the subjective realities of the players undertaking the change process. The role of teacher in the enacted perspective is the one who develops the curriculum and who, together with the students, grows ever more competent in constructing positive education experiences. The process of implementing an enacted curriculum is one of continual

growth for both teacher and student. The teacher is integral to its implementation. There would be no curriculum without teacher and student both giving to and taking from it in the classroom.

In response to the context of curriculum changes, Paris (1989) focused her research on the complex process of curriculum reform, which often contained conflicting historical, interpersonal, and ideological contexts of the individuals and organizations involved in the process of change. Based upon her research, she found that conflict and consonance resulted from a conflict between the fidelity perspective of district-level administration, which required all teachers to follow a standard curriculum in order to provide uniform quality and the enactment perspective of the teachers. Paris (1989:13) further explains:

...to teachers, the skills, talents, and knowledge necessary to enact a curriculum were context specific and had to be achieved "again and again" by exploration.

The best way to perform a quality curriculum, from the point of view of the enacted curriculum, was for teachers to pursue ideas through (1) classroom exploration; (2) discussions and observations with colleagues; and (3) formal instruction. These ideas are then "subjected to the teachers" ongoing evaluation and revision and practiced in the teacher's own classroom. It was not expected that a particular teacher's knowledge would be imposed on others, but that his/her knowledge would be a resource to others as they sought their own ways" (Paris, 1989, in P.W. Jackson 1992: 426).

Curriculum reform in the context of teaching and learning bring us to understand that successful implementation depends upon of teachers' roles and their professional ability to make use of resources in order to understand curriculum policy. The study explained above (Coburn, 2001a; & b) has demonstrated the two approaches—mutual adaptation and enacted curriculum—provide a greater focus on the role of teachers in implementing curriculum policy. Teachers have been considered important to the curriculum that was being implemented. As Tyack and Cuban (1995) argued, "Reforms that are inconsistent with the basic structures of schooling, such as replacing the subject with something else or sharply redefining the roles of teacher and student, tend to collapse even when they meet initial success in terms of implementation" (In Kliebard, 2002:5).

Chapter 3

ELT SCHOOL-BASED CURRICULUM: A CURRICULUM REFORM

This section provides background information about School-Based Curriculum of ELT in secondary education in Indonesia as the context of this book. It first describes the educational system that governs English teaching in the Indonesian secondary education context. Then it describes the new policy of ELT curriculum reform in general terms and later covers the aspects of diversification, syllabus design, learning materials (text books), and students' assessment (tests) in relation to this context.

A. Demand and Context for Curriculum Reform

According to Law No. 22, legislated in 1999 by the Republic of Indonesia (R.I.), regarding local government, decentralization implies that the authority to implement and

manage education shall be transferred from the national government to local districts or municipal government levels. The study of social sector decentralization in Indonesia showed that regional governments supervised public schools, although teachers and curricula were still subject to the authority of the government (Malo, 1995).

A context of curriculum reform is identified as the world becomes globalized; in particular, global education-economy, which is defined as education led by economic growth. Rivera (2003) explained, "Many significant changes that have taken place in the curricula of most developing countries in decades past could be attributed to the twin metonymic conditions of greater internationalization of market economies and globalization of the cultural economy" (in Pinar, 2003:553). Reich (1991), responding to the importance of education challenging economic prosperity in the 21st century, argues that acquiring information skills, i.e., system thinking, has significance as a new set of principles for the curriculum of the future. System thinking pertains to a "symbolic analysis" that is the type of knowledge and skill required in innovative knowledge-based forms of production (in Guile, 2003). The future of education in which economy is increased drastically becomes perceived as being technologically driven (Tapscot, 1995). Information skills, for example, would be critical to future economic and educational success (Bates, 1995). Therefore, the national call for reform was specifically economically driven in its agenda, and in its interpretations of power and control over teachers and curriculum (Kirst, 1987; Apple, 1990; Tyack, 1990; Cohn & Kottkamp, 1993).

The implementation of regional autonomy through curriculum decentralization has recently gained popularity among developing countries in general, and in Indonesia particularly as both a plan and an alternative mechanism for delivering public service and public goods, and as a means for implementing governmental functions and duties. Chapman (2001) predicted that decentralization would become one of the dominant issues of the next decade, particularly in the area of education in developing Asia.

Demands for the latest curriculum reform, which follows logically the restructuring of the administration of a new system of government, relate to recent political and economic trends coupled with some basic social and demographic facts. Indonesia, a country made up of about 17,000 tiny islands, nearly 6,000 of which are inhabited, the five biggest stretching across some 3,200 miles of Equatorial Ocean, is the fourth most populous country in the world. With 224 million people who are ethnically and linguistically diverse peoples, Indonesia is a unitary state, which is considered to be the best form of government to maintain national unity and national integration. Despite its diversity and size, Indonesia has one of the most centralized forms of government in terms of its social, political, and economic systems (Purwadi & Muljoatmodjo, 2000). A priority of the educational reform of 2000 in Indonesia was to restructure central education programs to offer the provinces a combination of flexibility and accountability.

District educational units, in return, would be required to achieve a national standard (MONE, 2000; 2003e). As stated in the current Indonesian decentralization laws, Law No. 22 of 1999 and R.I. Government Regulation No. 25 of

2000 provides district levels in the provinces with greater freedom in spending local funding, as they see fit (Government of R.I., 1999a; 2000).

Yet this transferring of tasks and administrative responsibility does not necessarily mean a general shift in power from the central government to the provinces. Lauglo (1995) argues that local governments, as local agents, are generally only given the role of implementing decisions that have previously been made at the central level. Hurst (1985) explained that the process of decentralization implies the transfer of certain functions from a small group of policy-makers to a small group of authorities at the local level. The central government retains responsibility for other types of matters considered to be part of a national policy agenda.

Moreover, Fiske (1996:11) argued, "Subordinate levels of a hierarchy are authorized by a higher body to make decisions about the use of the organization's resources". However, decentralization of decision making particularly in developed countries faces the contradictory pressures of centralization and decentralization, i.e., increased government control over policy and direction versus more responsibility for implementation, resource management and evaluation at the local level. This pressure has made the task of implementing reform both complex and challenging.

Hopkins (1998:1040) argued, "The task of balancing centrally derived change and locally developed improvement has proved in practice most difficult". One of the financial implications of decentralization in Indonesia was the implementation of school based management/SBM, in which schools districts have more autonomy in financing each schools according to its needs.

1. Economic issues

Indonesia is a centralized government system resulting in weak links between local demands and decisions about local public services, as well as an absence of a mechanism for local accountability. The financial crisis of 1997 triggered the resignation of the Soeharto government; weak public support of its successor, the Habibie government, has resulted in increasing demands for political and fiscal decentralization since 1998. In April 1999, a National Parliament hastily adopted a law requiring the implementation of drastic decentralization measures in fiscal year 2001. The Law of Regional Governance specifies the political and administrative responsibilities for each level of government under a decentralized structure (Government of R.I., 1999a:2000). The implication of economic crisis creates policy decentralization and economy regionalization. The ultimate goal is to bring the government closer to the constituents in order to provide government services in a more effective and efficient manner. It also provides strategies that assume the district and municipal governments have a better understanding of the needs of their communities and the aspirations of their constituents than does the central government.

In an education context, particularly in curriculum development, local governments together with the central government have rights and obligations, which include, among other things, guiding, supervising, assisting, and monitoring the implementation of education with the regulations in force. It also covers providing services and facilities, and ensuring the implementation of quality education for every citizen without discrimination as well as

allocating the availability of funds for the implementation of education for every citizen, particularly from ages seven to fifteen (MONE, 2003e:11). There is considerable evidence that policies of decentralization do not increase administrative efficiency, effectiveness, or local participation (McGinn & Street, 1985). Decentralization may only transfer autocratic behavior to local institutions (Adams, 2002). Adams (2002:48-50) also argued, "Successful decentralized programs of education depend on the capabilities of local governments". The financial crisis in Indonesia (1997) and the resulting bleak general economic picture impacted the educational sector, shifting it from one of agricultural to that of industrialization and service delivery. All of these situations created an urgent need for reform in order to meet increasing demands for the required industrial and service skills and be able to compete in the global market place.

2. Elevating of human resource development

Since the 1970s the education reform policies in Indonesia have focused on enhancing quality of life for the purposes of national development. Indonesia's Second Twenty-five-Year Development Plan (or PJP 1994/95-2018/19) focuses on increasing "human resources development" in order to ensure greater competition in the global marketplace, and the government has targeted areas of the national curriculum in order to improve the quality of education (MONE, 2003a; & c). For example, both the education reforms of the 1990s and the current reforms have similar goals in terms of increasing the quality of education in order to elevate the quality of life. The latest reforms, the implementation of CBC, focus more on learning reform and improving teaching through a teacher certification program

and implementing a salary system based on merit (MONE, 2000). Based on a revised statement in “Outlines of State Policy” for the period 1999-2004, the section on education explains:

To endeavor to achieve wider and more equitable opportunities to access high quality education for the whole population of Indonesia as a means to the creation of a high quality Indonesian person, through a meaningful increase in the budget for education. ...

To implement renewal of the education system, including curriculum renewal, through curriculum diversification in response to the heterogeneity of educational stakeholders.

... To improve the quality of human resources as rapidly as possible in a systematic, integrated and comprehensive manner, through a range of proactive and reactive measures implemented by all sectors of the nation, so that the younger generation – given appropriate support and protection – can develop optimally and to their maximum potential (Government of R.I., 1999b).

Part one of the statement above (To endeavor to achieve...stakeholders) appears to be concerned with two aspects: the creation of a high quality Indonesian person, the need to link education to the heterogeneity of stakeholders who are sensitive to the potential of each individual. The term “Indonesian person,” however, is inherently ambiguous and may refer to all individuals. But, in this context, it is much more likely to carry with it connotations of an “idealized” type of Indonesian citizen. This statement can be broadly defined as a means for developing the type of Indonesians whose daily conduct would reflect the integrity of Pancasila, a national philosophy, the Indonesian State Ideology.

Part two of the statement (To improve the quality of human resources ... maximum potential), however, places considerable emphasis on the necessity for an education system that is responsive to the needs and the strengths of individual students. Currently in force, these Outlines of State Policy later became the foundation for constructing a new curriculum, wherein education is expected to achieve two different objectives: The creation of the ideal Indonesian person; and, simultaneously, providing the resources that will enable every Indonesian citizen to develop in his/her own way. In addition, this second part also explains the diversification of the curriculum. Later diversification became the indicating factor in the need for curriculum reform.

B. ELT Curriculum in Indonesian Education System

The education system in Indonesia is mainly organized by the Ministry of National Education and decreed by law No. 20/2003 about National Education System. Under Article VI, this law sets the forms, levels, and types of education that should be organized by the central government, provincial, regency, and society. The forms can be formal, informal, and nonformal and range from elementary, secondary and tertiary level. Such education can be general, vocational, academic, profession, religious, talent, and other types such as children with disability.

In secondary education, the government controls the operation of general and vocational senior secondary school in which English is taught as an essential subject matter. The goal of English teaching at general senior secondary school (compared to vocational one) is to equip students with the ability to develop: (1) oral and written communicative

competence to the informational literacy level; (2) the awareness of the nature and the importance of English roles played in global competition among nations; and (3) understanding about the interrelationships of language and culture (Attachment of the Regulation of the Ministry of National Education No. 22/2006). The teaching is to be completed in six semesters starting from grade X to grade XII within 34 – 38 effective weeks and allotted in 4 lesson hours (1 lesson hour equals to 45 minutes) a week. Thus, the total lesson hours needed to reach the competence standard for each grade are from 136 to 152 lesson hours a year (Attachment of the Regulation of the Ministry of National Education No. 22/2006).

The English teaching in Indonesia reflects a moderate hierarchical structure. From the researcher's perspective, it has been identified at least five layers of the way the policy in language teaching and learning in secondary education is implemented (see Figure 1).

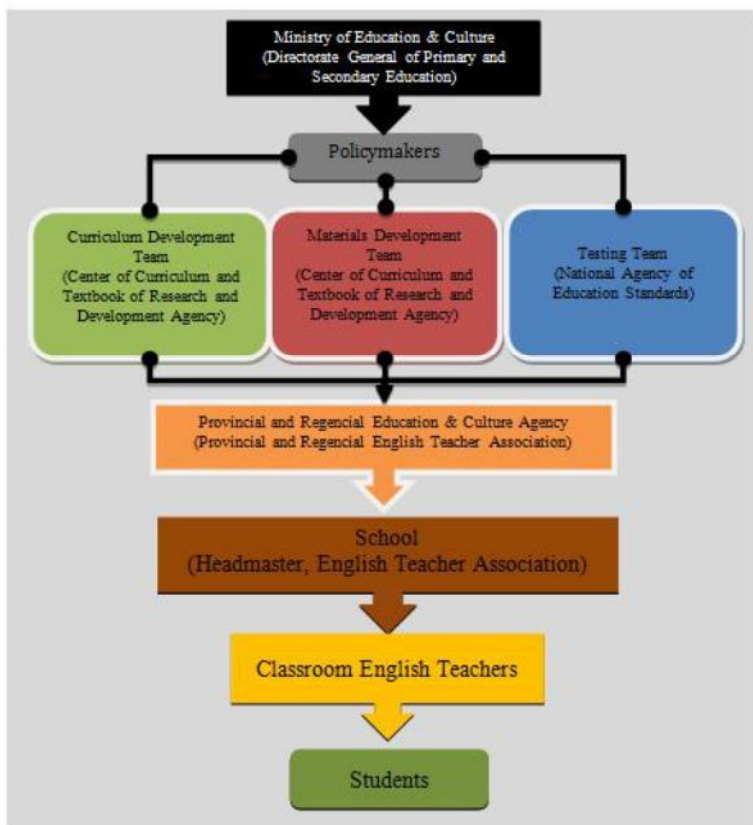


Figure 1. Policy Hierarchy of English Language Teaching

In Figure 1, the *first layer* is the Ministry of Education and Culture with the Directorate General of Primary and Secondary Education. This layer represents the level on which policymakers from governmental organizations formulate the national language policies based on the needs of the country as well as on the needs of national economic development. Within the first layer, there are three

committees or team undertaking three respective tasks, namely: (a) curriculum team; (2) textbook team; and (3) testing team. The first two teams are the Center of Curriculum and Textbooks of Research and Development Agency (PKP Balitbang Kemdiknas) while the third is represented by the National Agency for Education Standards (BNSP).

The *second layer* consists of two regional policymakers in provincial and regencial level that are expected to release and deliver the national language policy to every secondary school in their area. In this layer, there exists a Provincial and Regencial English Teaching Association. This is an academic association that regularly organizes local language teaching activities such as seminars, academic conferences, and large-scale English contests. This layer is also involved in policymaking; however, its academic nature indicates a lesser role.

The *third layer* comprises schools that maintain an English teaching and carry out the intended curriculum expected from the national policymakers. They formulate local rules and regulations on English language teaching and learning based on the situation at each school. Within the school, there is a teaching group (MGMP) which consists of English teachers and conduct teaching activities under the leadership of a headmaster on a regular basis. This layer includes administrators carrying out curriculum implementation. The *fourth layer* consists of classroom teachers and students: those who deliver the curriculum and those who receive the curriculum, and who are the actual implementers of the process.

1. Efforts made for curriculum reform

Curriculum reform policies of 1994, for example, indicate the government's attempt to adjust to global trends and to give the local districts greater autonomy at the provincial level in order to meet their needs and reflect their local conditions. The implementation of the recent local curriculum in 1994 for the Universal Nine-Year Basic Education/UNYBE program was one of the government's efforts to increase the quality of all types, levels, and channels of education.

The participation of every school's stakeholders and each district's personnel brought a major change in the administrative structure of curriculum development at the provincial level. School stakeholders—teachers, principals, and professional staff at both the regional and the district levels of government—became involved in the planning of their local curriculum (UNDP, 1994; NIER, 1998; Semiawan & Natawidjaya, 2000; Yeom et al., 2002; & UNESCO, 2003a).

Similar to the 1994 curriculum, the CBC is designed by the central government and structured around two main goals: The first is to retain the same level of quality education for all students – in each school and in every region of Indonesia; the second is to prepare these generations to compete in the global marketplace (MONE, 2000).

To that end, the first goal is to retain the same level of quality education for all students through the national curriculum, such as national testing, to become a source of the government's accountability to the public. This type of quality assurance, in terms of providing a comprehensive education product, is the government's responsibility,

indicated in the Educational Law No.20 of 2003, which states that the implementation and carrying out of education are the responsibility of the government, society, and each student's parents (MONE, 2003e). Therefore, the national curriculum should provide a "minimum standard" of students' learning experiences, so that every citizen, regardless of background, has the opportunity to obtain at least a fundamental amount knowledge and ability. Every citizen must meet these minimum learning requirements so that they are able to participate as active members of a community, as well as members of a nation and country.

Realizing a better quality of education through curriculum reform, CBC caters to the types of desired learning relevant to local, national, and even global contexts. CBC addresses a diverse range of each pupil's abilities, available learning facilities, and the various cultural regions of the country. The government's efforts to improve the quality of education relate directly to the question of whether schools in general, and schools in Indonesia in particular, perform in ways that enhance the skills and competence necessary for life in the global arena.

According to Levinger (1996:12) that schools often perform in ways that defeat the development of necessary cognitive competencies for life in a global era. The disjuncture between the real lives in and out of school diminished the transferability of knowledge across environments, settings, and contexts. Yet, such transferability is critical in an era of rapid change.

The constellation of skills required to enhance the development of human capacity and outlook correspond

with adaptability, knowledge transfer, and problem solving processes (Levinger, 1996), all of which are needed to meet the challenges of the 21st century, and to cope with the demands of the future (Semiawan & Natawijaya, 2000). Human capacity development implies an individual's ability including skills, attitudes, and behaviors, to perform tasks, which are necessary to survive and prosper, and is a by-product of participation in opportunities that are both available and accessed (Levinger, 1996).

In response to preparing younger generations to compete in the global marketplace, the second goal is the implication of a homogenized global market through the application of the human capital theory in education. The measurement of educational progress is determined by the increase in economic productivity (Spring, 1998). In terms of economic language, the government determines the output, or product, of schooling. Schools, through market competition, are motivated to find the best means of producing the type of student desired by the government (Spring, 1998). In order to improve education, the government will be more responsive and able to take advantage of existing opportunities, all of which will support national development.

In response to the role of education, Schultz (1961) argued that education was not to be viewed simply as a form of consumption but rather as a productive investment. Schultz (1961) focused on the role of education not only in improving the choices available to every individual, but also, with an educated population, in providing the type of labor force necessary for personal development and economic growth. Education is an important method for increasing the

development of human resources and for paying attention to what is emphasized in human capital theory; the education development of human beings should provide youths with skills that are adequate for developing their intellectual capacity, as well as enabling them to contribute to society as a whole.

Education, therefore, is a generally good investment for both individuals and the whole society (Psacharopoulos, 1994; 1995, in M. Bray, 2002). Modern theories, according to the development of human capital theory, perceive education as the method for development, which in turn, has human skill as an economic value for society at large. Education, as a consequence, can be used for identifying and training new talent in order to make effective use of innovative technologies, and for maintaining the social wealth established by past generations (Feinberg & Soltis, 1998). Education, therefore, does not simply mean providing children with the ability or knowledge they need to keep pace with global changes. Education also addresses the academic, distributive, and socialization functions (Izquierdo, et al., 1979). Izquierdo, et al., (1979) further explain:

The academic function corresponds to its responsibility for inculcating those universal cognitive skills held essential to society's capacity to provide for its members. The distributive function relates to education's role in preparing individuals for their roles in the division of labor, and providing an efficient distribution of talent through competitive selection. The economic function (conceived similarly in human capital theory) is related to the link between education and higher levels of

productivity on the part of individuals once in the workforce. In the context of the political specialization function the importance of education is acknowledged as indispensable to social integration and social control (in R.A. Morrow & C.A. Torres, 1995:55).

The following describes curriculum development in Indonesia thus far, in particular its development from previous national curriculum (e.g., 1952) to the current curriculum reform.

This section also discusses the importance of the teachers' role in curriculum decision-making.

2. Curriculum development in Indonesia

Curriculum development in Indonesia has been centralized in nature and involves different agents at the pre-school, primary, and secondary levels of the education system. This has been the practice since Indonesia proclaimed its independence in 1945. These agents contribute to the recommended curriculum at different levels of specificity (Thomas, 1991a). The word "agents" refers to groups or individuals that may take part in the curriculum decision, such as individuals or members in the parliament, non-government organizations (NGO), scientists, scholars, government and private institutions, community leaders or community figures.

These agents, in determining the curriculum, examine the content in order to determine its political significance and the kind of expertise necessary for making decisions about the content of a particular subject. They are responsible for all decisions regarding all core subjects in the national curriculum, such as religious education, moral

education, mathematics, science, Indonesian language, etc. At the level of curriculum implementation, a classroom teacher decides which objectives to pursue and which methods of instruction to use to achieve them.

One of the agents from the administrative hierarchy is from the nation's parliament. Another agent oversees the series of educational organizations within the department of MONE or within the private-school foundation, including individual schools and classroom teachers. Interaction among these agents in determining the contents of the curriculum can differ from one subject to another. Other related groups, such as teachers' unions, parents, and industrial organizations, used to voice their concern about curriculum matters, but did not participate in the process. The agents are responsible for evaluating the national curriculum; on both internal and external sites. The government, i.e., the Curriculum Development Center/CDC and the Directorate General of Primary and Secondary Education, is still responsible for the internal sites. Government involvement is usually through activities such as collecting the data from the educational setting through monitoring and meeting teachers and parents. External sites work through related groups; among these are the teachers' union (PGRI or Persatuan Guru Republik Indonesia), parents and industrial organizations.

Referring to the teachers' union as the government's counterpart, however, is not guaranteed, as it has not really played any role in curriculum development and its function is perceived as an agent for the political purposes of the government. Neither did the industrial organizations

express their concern about the students' skills, which did not meet their needs.

In Indonesia, educational change happens in order to make education more relevant, effective and appropriate to the needs of the government. In 1947 the country introduced its first national curriculum, the Rencana Pelajaran or Lesson Plan (Tilaar, 1995:251-270). Since then the Rencana Pelajaran has been reviewed and amended in 1952, 1964, 1968, 1975, 1984, and 1994 and most recently in 2000. Post-independence, education was used as a means of achieving national unity and identity. This was principally achieved through the introduction of the 1964 and 1968 curriculum reforms based on Pancawardana or five core subjects and the concept of Pancasila coupled with differentiated hours for the teaching of the Indonesian language to cater to non-Indonesia language and first language speaking pupils.

With the aim of maintaining political stability, Indonesia's second government (during period of 1966-1998) adopted an interventionist approach to the 1975 and 1984 curriculum reforms, i.e., Pancasila became a separate subject, dividing the study of history into "national history" and "the history of national struggle", and incorporated many themes such as national heroes, family planning and tourism into the various curriculum subjects.

On the whole, the centralized model of curricular regulation was characterized by the concentration in the system's central levels of government of the principal regulating mechanisms for aspects, i.e., the production of the curriculum, meaning decisions about the goals and contents of education; the circulation of textbooks, that is to say the control over the forms of representation of those goals and

contents; and the system of supervision, meaning the fundamental mechanism to control the relationship between the policies proposed at the central level and those implemented locally at school level. Accordingly, it is possible to represent the ways in which the central government monitored the institutional educational process. In the development of the 1994 curriculum, for example, the government moved toward a drastically different role for the central government. Responsibility was shifted to the provincial level of MONE for, among other things, delegating the development of student assessment, teaching modes, adaptation of core subjects in the national curriculum, and LCC development.

In doing so, and with respect to strengthening teachers' support in the implementation of curriculum 1994, the government established a mechanism for curriculum network group (CNG) or curriculum task groups. The network's tasks were to: (1) plan, develop and implement the curriculum according to local conditions and needs; (2) assist teachers in curriculum development through adjustments, elaboration and analysis based on the students' immediate environment and community needs and resources; and (3) monitor and evaluate the implementation of both national and local content. The CDC, based on its roles and functions, provided, among other things, advice, assistance, and guidance to the network in the elaboration of the national curriculum content, analysis, monitoring and evaluation of curriculum (NIER, 1998; MONE, 2000; & UNESCO, 2003b).

To sum up, the CNG was established in order to: (1) involve different regions in the development of a national

curriculum; (2) improve the level of professionalism in curriculum development at the various levels (national, provincial, district); and (3) establish a mechanism for curriculum dissemination and development at both national and provincial levels. With regard to the function of control, all groups belonging to the curriculum networks and regions had to follow the policy initiative made by the curriculum development center.

3. Curriculum development approach

The development of national curriculum 1994 was intended to be competence-based so that education would be more flexible in reacting to changes in society, such as the rapid developments in information and communications technology. The emphasis was on improving the quality of teaching and learning so that teachers could adapt and implement strategies appropriate to the needs of their respective region. However, this approach had not been successfully implemented, particularly at the primary level where teachers were used to being given precise instructions as to what they should do in the classroom. This situation was understandable if teachers were ill prepared to implement teaching and learning strategies because of a lack of in-service training (INSET) in terms of teaching and learning methodology, as well as understanding of the learning content coverage. The main problem was that the planned teachers' guides were never printed to provide teachers with detailed information about how the national curriculum should be interpreted. Teachers' concerns were compounded by school inspectors who, rather than providing support and training, were critical, which lowered teacher morale and caused confusion. Teachers, as a

consequence of having little opportunity to understand the curriculum, relied heavily on the available textbooks for daily teaching rather than trying to understand the curriculum.

In some ways, the introduction of competency-based teaching and learning was not new to Indonesia. For example, the Indonesia language curriculum of 1964 and 1968 were intended to be competence-based that emphasized the development of language skills by learning through the environment. Conversely, the 1975 and 1984 curriculum reforms emphasized content based curriculum and this resulted in many pupils not knowing anything, or not being able to perform certain skills to help them gain a job by the time they left school. Therefore, the 1975 and 1984 curricula were much concerned with pupils' understanding of the content coverage in the curriculum, rather than providing them with appropriate "life skills" as the realization of understanding the learning materials. The government educational policy from the year 2000 continued to advocate decentralization and competency-based teaching and learning. One of the important reasons for adoption of a competency-based approach was to ensure learning requirements of pupil achievement throughout the country, regardless of curriculum coverage, and to ensure pupils were not disadvantaged by moving from region to region.

C. New Policy of ELT Curriculum

The rationale for curriculum reform in Indonesia changed over the years from the need to create national unity, with its centralized control, to one of socio-economic empowerment through decentralization. However, achieving the change was difficult when the prevailing

culture for many years was through diktat or written summary of lecture and centralized control (Kompas, 2004).

Such a dramatic change had significant implications for human resource development. Ultimately, however, the local governments will be empowered so that they can all progress and indeed compete with each other, leading to a better future. For example, the curriculum 1994 was felt to be inadequate in a number of ways. It was overloaded and too difficult for the pupils to complete; inadequate attention was paid to the importance of the natural and social environments; there was a failure to incorporate new areas of content, including education for human rights, moral education, health and nutrition education; and there was a need to update the content of Indonesian history texts (Blazely, 1999; Boediono & Sweeting, 1999).

The Ministry of Education and Culture continuously improves the curriculum in all levels of school. Since the advent of the new national curriculum in 2006, the ELT has undergone dramatic changes and reforms. The most obvious changes have been connected with four aspects of ELT practice; diversified curriculum, syllabi, material contents (and the approach), and English tests. The diversified curriculum, however, is still in question.

In 2006, all elementary and secondary schools of any type in Indonesia are recommended to socialize the School-Based Curriculum. Starting 2009, the implementation of the curriculum has become an obligation for all schools in elementary and secondary level (The Regulation of the Ministry of National Education No. 24/2006 Article 2 Verses 1 – 2). School-Based Curriculum is a curriculum of unit level of education that applies content standards and grade level

expectations based on the standards of education issued by National Agency of Education Standards. It is a curriculum which gives the schools independency in designing, developing, and implementing the curriculum based on their own situation, condition and potential. There are principles that should be considered in developing the curriculum, namely: (a) oriented in potential, development, needs and interests of students (2) varied and integrated (3) responsive to science, technology and art (4) relevant to life needs (5) general and continued (6) long life learning (7) balanced with national and local needs (Muhaimin, Sutiah, and Prabowo, 2008:22-23).

The implementation of the curriculum development models is regulated in the decree of the Minister of National Education No. 24/2006 mainly in Article 6 and 7 (The Regulation of the Ministry of National Education No. 24/2006). The content standard of curriculum is regulated in No. 22/2006 Article I of the decree that states:

Standar Isi untuk satuan Pendidikan Dasar dan Menengah yang selanjutnya disebut Standar Isi mencakup lingkup materi minimal dan tingkat kompetensi minimal untuk mencapai kompetensi lulusan minimal pada jenjang dan jenis pendidikan tertentu.

(Translation: The content standard for elementary and secondary unit of education encompasses the minimum coverage of learning materials and the minimum level of competence to achieve minimum outcome competence at certain levels and types of education).

In Attachment 3 of the decree, standards are implicitly described as useful expectation for all stakeholders within

the learning community such as administrators, teachers, students, parents, and others. Such standards are important for certain reasons. For example, administrators will use the standards as a curriculum and literacy framework in order to adopt materials, strengthen professional development, implement project work plans, strategies, programs, and coach to increase student achievement. Educators will use the standards to identify the expectations of what should be taught in each grade level, their relationships, relevance, and rigor.

As teachers become aware of what is taught across the grade levels, they will use scientifically-based research data to plan differentiated instruction to improve academic achievement. The most important one is students as they are the center of the learning community. When students know what is expected, they are more likely to be engaged and motivated. They have a vested interest in learning and demonstrating achievement. As students work through a rigorous curriculum, they can consciously and comprehensively apply the acquired knowledge and skills to their everyday lives and participate in a global society. Students can set their own individual goals for achievement. As students are assessed they can monitor their own progress. As they attain their goals, they should continue to strive to achieve and feel personal satisfaction from the experience of success. Parents and members of the community will also benefit from the high expectations of the standards. Parents and other community members are provided with concrete information regarding what is expected of the students. An education based on standards helps develop better schools, more highly-qualified

employees, and conscientious citizens. In short, the community can continue to flourish.

In the guidelines of curriculum development of unit level for elementary and secondary education, it is stated that such curriculum should be developed by teachers, school committee/private school foundation, counselors, and curriculum developers, and supervised by the National Education Agency in the local area. The School-Based Curriculum is then signed by headmaster, school committee and the Chief of National Education Agency. The curriculum should then be validated by curriculum and education experts. Moreover, to have a clear description about the reliability of the curriculum, the school management and administrators should make a periodical assessment or evaluation either formative or summative to see if everything is well-implemented (The National Agency for Education Standards, 2006).

The release of English curriculum is underpinned by systemic functional linguistics and involves the genre-based approach that is concerned with the relationship between language and its function in social settings. It indicates that Indonesian government's is aware to the necessity for the teaching of English which is functional and which can lead to students' ability in using the language in context.

According to the Content Standard, the ultimate goal of learning English is to make the students to be able to able to participate in discourse or to communicate idea, feelings, etc. in spoken and written English accurately, fluently, and in acceptable manners. In competence standard of English for senior secondary schools, there are four competencies that students should achieve: listening, speaking, reading

and writing, with conventional rules of language collaborated in the four skills.

The discussion of the background to the School-Based Curriculum leads further elaboration of the four aspects in it, namely: (a) Diversified Curriculum; (b) Syllabus Design; (c) Materials Development; and (d) Students' Assessment.

1. Diversified Curriculum

In general terms, diversified curriculum is primarily intended to pay attention to the classroom with a heterogonous group of students; attending to special needs students; and helping to produce curricular adaptations for the diversification program(Saez and Carretero, 1998:727). Differentiation is inline with diversification since both aims to achieve curriculum relevance. Differentiation involves adapting a course of study to match the specific needs of learners (Pollard and Triggs, 1997). However, diversification differs from differentiation in that diversification involves differentiation within its tracks. For example, students can be diversified into science and humanities tracks in secondary education that can be differentiated according to ability into slow or fast learners (Oakes, Gamoran and Page, 1992; Saylor and Alexander, 1966).

Curriculum differentiation seeks to address different student abilities and needs by categorizing them into low, average and gifted. Students are differentiated on the basis of learning ability into mentally retarded, slow, average, fast or gifted learners. They are also differentiated because they deviate from average students in psychological or physical features. Moreover, differentiation could occur because learners differ in their *social* and *economic* backgrounds, since

some come from culturally or economically deprived environments.

Differentiation of students could also occur on the basis of overt behavior and emotional stability (problem learners) into pre-delinquent, delinquent or socially maladjusted and emotionally disturbed (Saylor and Alexander, 1966). This research, however, is concerned only with the development and implementation of the diversified curriculum in secondary schools performed by the teachers as main stakeholder.

Diversified curriculum in this context is one of the most innovative curriculum developments which is formed to promote School-Based Curriculum. This curriculum highlights the shift of curriculum from a centralized to a decentralized based system of curriculum development. It also projects the need for improving special talents and competencies related to potential local issues through a diversified curriculum.

The development and implementation of diversified curriculum is in line with the issues of some laws/decrees that have significantly changed the system of government in Indonesia, included the management system of education. This situation has significantly changed human resources development system by means of education system. In decentralized educational system, the policy gives more autonomy in planning, managing, administering, implementing, and evaluating of education program in districts and school level.

The autonomy of implementing education program has raised some implications in districts as well as schools level in order to develop curriculum in according to their

own characteristics, vision, mission and potential issues they have had. In addition, schools have become more powerful by having more opportunities to develop and implement curriculum based on students' need and local environmental ambitions.

Under such curriculum, schools have more chances to serve plurality among students and accommodate local needs. In other words, by having developed and implemented such curriculum school setting, it is expected that schools would be able to accommodate learners' differences in their own core competencies reflected through their ways of thinking, doing, learning and attitude they would reflect in their daily life.

2. Syllabus

The ELT syllabus is a sustaining syllabus and designed by the Teacher Forum or known as 'MGMP' under the control of National Education Agency in district or province level. A sustaining syllabus means that it is developed by elaborating the syllabus into the teaching plans; is implemented, evaluated, and followed-up by the teachers; is analyzed and developed periodically by considering the learning achievement evaluation results, process evaluation, and lesson plan evaluation. The plan of learning process covers the syllabus and learning implementation plan that contain at least learning objectives, learning materials, teaching method, learning resources, and learning assessment (The Government Regulation No. 19/2005 Article 17 Verse (2) and Article 20).

From Article 20 of the Government Regulation No. 19/2005 it is obvious that the syllabus consists of Competence Standards, Basic Competences, Core Materials, Learning

Activities, Objective Indicators based on Basic Competences, Assessment/Evaluation, Time Allocation, and Learning Resources. The steps to design an English teaching syllabus are: (1) analyzing and determining Competence Standards; (2) analyzing and determining basic Competences; (3) identifying core materials; (4) contextualizing learning activities; (5) formulating competence achievement indicators; (6) determining assessment types; (7) allocating learning time; and (8) selecting and deciding learning resources.

Designing English syllabus at secondary schools should be based on the learning characteristics at the schools and also its condition and need. The designing needs to consider of whether the school is an International Standard School, a Piloting International Standard School, an Excellent School, a Favorite School, or ordinary ones. Under such categories, the schools will be able to figure out the portray of the input (students), support from parents, completeness of infrastructure, learning environment condition, and other requirements.

Teachers at schools should develop syllabus within the School English Teacher Association by adapting the syllabus that they should design from the syllabus guidelines issued by the National Agency for Education Standards based on the subject's characteristics, students' potentiality, school's need and condition. The development of English syllabus is aimed to the development of competency to communicate in both spoken and written which integrated four skills: listening, speaking, reading and writing.

3. Learning Materials

Tomlinson (1998) defined language learning materials as anything which is used by teachers or learners to facilitate the learning of a language. They can be anything which is deliberately used to increase the learners' knowledge and/or experience of the language. Furthermore, he defined materials development as anything which is done by writers, teachers or learners to provide sources of language input and to exploit those sources in ways which maximize the likelihood of intake. In other words, materials development is the supplying of information about and/or experience of the language in ways designed to promote language learning. He further explained that the materials should be evaluated to measure the value of materials that the learning points should be potentially useful to the learners and that the learning procedures should maximize the likelihood of the learners actually learning what they want and need to learn. It is not necessarily enough that the learners enjoy and value the materials (Tomlinson, 1998:1-25).

At least 16 basic principles of second language acquisition should be taken into account when dealing with materials development for language teaching. The basic principles of second language acquisition are summarized by Tomlinson (1998:7-22) as listed below:

- a. Materials should achieve impact or noticeable effect on learners: curiosity, interest and attention are attracted. Impact can be achieved through: novelty, variety, attractive presentation and appealing content;
- b. Materials should help learners to feel at ease;
- c. Materials should help learners to develop confidence;

- d. What is being taught should be perceived by learners as relevant and useful;
- e. Materials should require and facilitate learner self-investment;
- f. Learners must be ready to acquire the points being taught;
- g. Materials should expose the learners to language in authentic use;
- h. The learners' attention should be drawn to linguistic features of the input;
- i. Materials should provide the learners with opportunities to use the target language to achieve communicative purposes;
- j. Materials should take into account that the positive effects of instruction are usually delayed;
- k. Materials should take into account that learners differ in learning styles;
- l. Materials should take into account that learners differ in affective attitudes;
- m. Materials should permit a silent period at the beginning of instruction;
- n. Materials should maximize learning potential by encouraging intellectual, aesthetic and emotional involvement which stimulates both right and left brain activities;
- o. Materials should not rely too much on controlled practice; and,
- p. Materials should provide opportunities for outcome feedback.

Brown (1995:139) made a remark on learning materials as any systematic description of the techniques and exercises

to be used in classroom teaching. The key in developing sound materials is to ensure that they are described and organized well enough so that teachers can use them with no confusion and with a minimum of preparation time. In providing learning materials for language teaching, Brown (1995:140-167) framed the process in three levels; *adopting*, *developing* and *adapting* and each level is summarized as follows:

- 1) ***Adopting*** materials in a rational manner is not as easy as it might at first appear. The following notes should be considered in the process of adopting materials:
 - a) It is necessary to decide what types of materials are desirable: books, CD etc;
 - b) All available materials of these types should be located just in case they might prove useful: short list of candidates for materials that might be adopted – ask for a desk copy from publishers;
 - c) Some form of review/evaluation procedures must be set up to pare this list down to only those materials that should be seriously considered so that final choices can be made: material evaluation; and,
 - d) Some strategy for the regular review of these adopted materials must be set up to make sure that they do not become irrelevant to the needs of the students and the changing conditions in the program: ongoing evaluation.
- 2) ***Developing*** materials as the second level can be done only if all efforts to adopt materials for purposes of teaching those objectives fail to uncover suitable materials. Developers need to pay attention to needs assessment, goals and objectives, and tests which describe a program

Materials can be developed that will create the best possible match between materials and the curriculum in question. They should also pay attention to approach, types of syllabus, techniques, and exercises. Types of syllabus range from structural, situational, topical, functional, notional, skills, to task-based one. Within the process, developers also need to be careful of the unit analysis the development may cover. The analysis should consider the following things:

- a) The situations in which the foreign language will be used, including the topics that will be dealt with;
 - b) The language activities in which the learner will engage;
 - c) The language functions that the learner will fulfill;
 - d) What the learner will be able to do with respect to each topic;
 - e) The general notions that the learner will be able to handle;
 - f) The specific (topic-related) notions that the learner will be able to handle;
 - g) The language forms that the learner will be able to use when the course is completed; and.
 - h) The degree of skill with which the learner will be able to perform.
- 3) The last effort is *adapting* which is done by finding and evaluating materials that might serve at least some of the students' needs and help to meet at least some of the course objectives; and filling in the gaps that have been identified. This process is followed by creating a blueprint of the materials. In the blueprint there should be a definition of materials, client to be served, delivery

modes, intensity, content, outcome, and special considerations (Brown,).

Teachers' creativeness in developing learning material and method is demanded professionally. The learning activity is a student centered learning and the teacher as a facilitator. The time allocation in syllabus is based on the situation and condition of teaching – learning activity in the school. The development of Basic Competence into indicators depends on the learning materials, activity and teachers' creativeness.

The teaching of English is developed with the framework of Genre-Based Approach and it seems to pose some challenges for the teachers. They should not only pay attention to linguistic aspects but also to strategic competence, socio cultural and discourse aspects. Given this challenge, the teachers who have been accustomed to conventional teaching which emphasizes on linguistics aspects need to switch to a new teaching paradigm.

However, this new paradigm sometimes leads to the confusion and problems. For example, in Indonesia, there are 30-48 students in a classroom. As a result the situation may not be effective. The students can be bored, stuck and noisy if the teacher does not creatively design the learning method, so the atmosphere cannot support the effectiveness of the learning process.

Genre-Based has variant texts of genres that can be taught in interesting way. Students are expected to involve creating 'making- meaning' situation in the kind of genres. However, the thorny questions are arisen: How to make all students get involve in 'meaning-making' situation? How to find the suitable teaching materials that familiar with

students' daily life? As language is fundamentally contextual and second language pedagogy should focus on teaching language as it really used by speakers and writers in 'meaning-making' situations and how to scaffold students in an interactive cycle of teaching and learning? The questions are usually answered by the meaningful activities which are created by the teachers, such as: Role Playing, Discussion, Debating, Writing Process, Singing and Poetry Reading.

4. Students' Assessment

In the theory of educational evaluation, it is defined that evaluation is a systematic process to collect, to analyze, and to interpret students' achievement of learning objectives (Linn and Gronlund, 1995:56). To obtain the data about learning outcomes or learning achievement, a set of educational measurement should be used. The measurement instrument can be in the form of tests, questionnaire, etc. and should be based on the curriculum (Slavia and Ysseldyke, 1988:24).

In general, there are two types of evaluation in learning and teaching process. The two types of evaluation are evaluation of learning outcomes and evaluation of learning process. The evaluation of learning outcomes is also called substantive evaluation while the evaluation of learning process is called diagnostic or managerial evaluation (Sasmoko, 1997:34). In English learning and teaching, the evaluation of learning process is important to control the quality of learning. Besides, it is useful as an instrument to collect the data about the strengths or the weaknesses of the ELT components to review, revise and optimize the ELT program in general (Herbert, 1987:56).

At the end of the English learning and teaching process at any schools, a set of evaluation is done systematically and sustaining to acquire, to analyze, and to interpret the data about the process and the results of students' English learning. By doing so, the school management and the government are able to give meaningful information in decision making (Attachment of the Regulation of the Ministry of National Education No. 22/ 2006). An objective and a reliable decision should be based on accurate measurement of information (Mehrens and Lehman, 1984:68). The English learning assessment results at schools provides information about the level of proficiency or the level of achievement of students based on learning objectives derived from standard of competence. The assessment results are pertinent to describe students' actual competence (Popham, 1995:58). It also describes the results or the learning achievement of students that can be used as the basis of further policy of the innovation of learning program (Haribowo, 1994:79).

The form of the test in the national examination is multiple-choice. Such format is effective to be used for a large number of participants as it is practical in terms of checking and scoring. Suryabrata (1997:27) claims that the test for the national examination should be formulated using the most communicative language to make it easy to understand and to keep fairness. The use of communicative language in a test formulation is meant to be easily understood by the examinees and to give equal opportunity to understand the test (Worthen and Sanders, 1987:36). Therefore, the national evaluation is pertinent to the ideas of

getting information about the effectiveness and the accomplishment of learning program (Nitko, 1996:169).

Based on the guidelines of the national examination 2011 – 2012 for senior secondary schools in Indonesia, the national examination is used as: (1) a control of the improvement of the learning and teaching process; (2) an instrument for students to continue to tertiary education; (3) a measurement of students' actual learning competence individually or nationally; (4) an instrument to describe the quality of education and the map of output competence inter-unit and inter-region from time to time; (5) a feedback for curriculum development and for policy making from the school level to central level; (6) an input for teachers and school accountability to the community to evaluate the quality of vocational education in the country; and (7) a consideration for students leaving.

Based on the list above, there are three stakeholders of education that needs the results of the national examination in senior secondary schools, namely students, school management, and the government. However, the students are the most prominent stakeholder that might need the outcome of the national examination as they are the subject of such examination. The students need to know their outcome competence from school to portray their level of competence and achievement to make a decision of whether to continue to tertiary education or to work based on their life-skills. For the English language achievement, the students need to know their actual level of proficiency or level of achievement to be able to get involved in a better field of work that prerequisites a certain level of communicative skills of English (Nitko, 1996:171).

The implementation of the national education in senior secondary schools is in line with the Law No. 20/2003 about the national education systems Article 44, stated that “the government is obliged to accomplish a national evaluation of learning outcomes of education of any type and or any level”. The evaluation of learning outcomes that conducted annually is called the leaving school evaluation or the national examination. The purpose of the national examination is to certify, to select, to survey and to monitor the quality of education (Keeves, 1994:45).

To determine the English learning outcome standards as stated in the Regulation of the Ministry of National Education No. 22/2006, teachers of English should refer to the regulation of determining the Minimum Mastery Criteria or *Kriteria Ketuntasan Minimal* (KKM). The Minimum Mastery Criteria are discussed and decided at the beginning of academic year; are decided by the English Teacher Forum; is stated in a rational number that ranges from 0 - 100 as the maximum level of mastery; is able to be set under the maximum level of mastery; and should be written in Students’ Learning Achievement Report. The ideal criterion of mastery level for each indicator is 75%. The teacher should set the ideal criterion by considering the students’ average level of ability, complexity of competence, and supporting facilities and resources for learning. Schools should improve the criterion from year to year to achieve an ideal criterion. In the Government Regulation No. 19/2005 Article 72 Verse (1), a student is stated to pass from a unit of education on elementary or secondary after completing all learning program requirements, achieving the minimum criteria of all subject matters of all required types, and passing the school

leaving examination. The passing grade is regulated by the Ministry of National Education based on the National Agency for Education Standards' advices.

Chapter 4

CURRICULUM POLICY AND IMPLEMENTATION

This section discusses the reasons why implementation studies are conducted, and then describes three types of key stakeholders in implementation as well as their roles. Next, it explores curriculum implementation models from general education to provide a point of entry to further investigate factors which may facilitate or inhibit curriculum implementation in the English as a foreign language secondary context in Indonesia.

A. Rationale of Curriculum Policy and Implementation

This section focuses on the rationale of undertaking curriculum policy implementation, on the essential roles that the major stakeholders - in this case, policymakers, administrators, and teachers play in policy implementation,

and on the various implementation models in the current literature.

Snyder, et al., (1992) contended that research on curriculum implementation has been a relatively recent phenomenon. The earlier literature on change and innovation has focused on the diffusion and adoption of innovations. However, few empirical studies have been conducted that deal with curriculum policy implementation. Within these limited number of studies, even fewer have explored problems associated with the implementation process or pinpointed variables responsible for the sustainability or discontinuation of innovations (Fox, 2005). It was not until the late 1970s that research on curriculum innovation started to focus on the issue of implementation.

A discrepancy often exists between theory and practice. This mismatch emerges when curriculum policy is implemented in practice. However, it is not known to what degree the government's stated curriculum policy is being enacted in EFL teachers' classrooms. Fullan and Pomfret (1977:336-339) suggested four reasons why it is vital to study implementation. They were:(1) To know what has changed, people must conceptualize and measure it directly; (2) To understand why so many educational changes fail to become established, people should study some of the most problematic aspects to bring about change; (3) To not do so may result in implementation being ignored, or being confused with other aspects of the change process such as adoption; (4) To interpret learning outcomes and to relate them to possible determinants, people should conduct implementation studies.

Moreover, the entire process of implementation is vividly portrayed as a “black box” (O’Sullivan, 2002). Examining what is occurring in this “black box,” i.e., the process of implementation, may enable its stakeholders to determine if any change has actually occurred and to discover the reasons why change was either impeded or facilitated.

B. Major Stakeholders and Roles

Curriculum policy implementation in any educational jurisdiction involves a variety of stakeholders. Their roles in the implementation process contribute to the degree to which new or revised curriculum will be successfully implemented in the local institutions. The following review of literature focuses on the roles of three major players, and relates those studies to the current study. These three major players are: policymakers who formulate curriculum policies, middle-level administrators who interpret the policies and communicate them to the actual implementers, and the teachers who implement these directives.

Morris and Scott (2003) argued that within centralized organizations (such as the Indonesian educational system), challenges often exist when transmitting policy intent from the most senior level through the middle-level managers to the point of delivery. Many people in different positions, committees, and organizations are involved. Morris and Scott (2003) also stated that many policies are impossible to implement because they are too ambiguous. Spillane, Reiser, and Reimer (2002) concurred, saying that one of the reasons for implementation failure might be caused by policymakers formulating unclear and inconsistent directives regarding the behaviors desired from implementers. They concluded

that when policy directives pair a clear implementation goal with helpful procedures the policy is more likely to be implemented.

Desimone (2002), in reviewing and analyzing the literature documenting reform implementation, found that four policy attributes in addition to specificity contributed to smooth implementation, which were: consistency, authority, power, and stability. She referred to specificity as being how extensive and detailed a policy is. She contended that the more specific a policy was in terms of materials, information, professional development, guidance, and instructions provided, the more likely teachers were to be able to implement it. However, policies often contain only shadowy guidance for practice (Matland, 1995), tending to make it difficult for local implementers to execute, or allowing the grass-roots groups too much latitude in implementation.

Desimone (2002) elaborated on the other four policy attributes, stating that implementation of a policy is easier if the policy dovetails with other ongoing reform efforts at the school, district, and state levels. She contended that the authoritative aspects of a policy can be sorted into three categories: (1) normative authority, which includes teacher participation in decision making, teacher buy-in, participation in networks and collaborative activities, and norms related to race, ethnicity and income; (2) individual authority, i.e., principal leadership; and (3) institutional authority, which includes district leadership, resource support, and parent and community support. Desimone further asserted that the power of a policy is multilevel and operates through the force of the different rewards and sanctions associated with the reform effort. Finally, she

argued that a policy tends to achieve more success in implementation if it is operated in a stable environment with little turnover - i.e., a low mobility of teachers, students, and administrators. McLaughlin (1987) also purported that street-level bureaucrats (Lipsky, 1980) must be both supported and pressured into carrying out the policies. While administrative pressure alone cannot effect changes in teachers' perceptions, beliefs, and routine practices, support in terms of knowledge, skills, abilities, resources, time, etc., is needed to enable efficient implementation.

In addition to the above mentioned five essential policy attributes, policymakers should also take the contextual or organizational factors into consideration (O'Sullivan, 2002). Morris (1995) claimed that the Hong Kong curriculum development system was a highly centralized one; similarly language education at the Chinese tertiary level is also characteristic of top-down policies. Darling-Hammond (1990) stated that these top-down policies can constrain practice because of the local conditions. Wang and Cheng (2005) found that local culture of teaching impeded teachers' buy-in of the innovation-from-the-top initiative in one Chinese university. From a case study of one New Zealand high school, Timperley and Robinson (1997) identified reasons for the slow and sporadic implementation of the national policy initiative in the locality. They found that the local school's professional norms and beliefs about authority and the culture of conflict avoidance precluded effective implementation. Therefore, they called for an ongoing dialogue about the adequacy and congruence of the beliefs and practices that influence both

the proposed policy and the local practices during the process of policy formulation.

Performing a bridging role between policymakers and implementers, middle-level managers or administrators have the task of taking a national policy and making it workable in local institutions, i.e., schools. Honig (2004:66) defined middle management as intermediary individuals or “organizations that operate between policymakers and policy implementers to enable changes in roles and practices for *both* parties”. Spillane et al. (2002) maintained that the position of the administrators in the organizational hierarchy empowered them to focus their work in two directions. One direction is that administrators are themselves the enactors, responsible for implementing both national and institutional policies. The other direction is that administrators depend on other enactors - classroom teachers - for the successful implementation of these policies. Using a qualitative case study design, Honig (2004:83) explored how four intermediary organizations in the United States worked with policymakers and implementers to leverage changes. One of the most important findings revealed that “intermediary organizations’ functions and their abilities to perform those functions are context specific - contingent on given policy demands and policymakers’ and implementers’ capacity to meet those demands themselves”. As well, intermediary organizations can be independent and augment their own capacity to carry out their core functions when needs change. Just as the people on the receiving end must have the capacity and motivation to be able and willing to carry out the policy, so must the intermediaries.

Operating in complex policy arenas that include the policymakers and implementers between whom they mediate (Honig, 2004), middle managers are supposed to be able to understand and interpret the national policy mandate in the context of the implementers' knowledge, beliefs, and abilities. However, more often than not, what local administrators communicate to their implementers is a simplified, revised, or simply inaccurate version of the policies handed down to them from the policymakers. In other words, as Lefstein (2004) put it, policy messages are distorted as they filter down through the various levels of educational administration. Spillane (1998) discerned policy implementation as an interpretive process, because "implementers must figure out what a policy means and whether and how it applies to their school to decide whether and how to ignore, adapt, or adopt policy locally" (Spillane et al., 2002:733). Hill (2003) confirmed that middle managers are positioned to facilitate policy interpretation for the street-level actors such as classroom teachers. Their assistance increased the implementers' understanding of what policies meant; particularly what they meant in everyday practice. Their distinctive functions also included formulating and recommending the organizational or individual practices needed for implementation and to provide the specific resources and training required by the implementers in order to meet the policy objectives.

In addition to the facilitating roles that middle managers perform in their mediation between policymakers and implementers, Lefstein (2004) confirmed that these administrators are not merely passive conduits of national policy. Instead, their active and critical roles in interpreting

and shaping national and state initiatives are critical in the educational contexts (Spillane, 2004). They are responsible for ensuring that the grassroots implementers have the skills, abilities, and resources to implement the policy. An interesting study by Gross et al. (1971) identified the middle-level educational managers as being primarily responsible for the teachers not having the abilities and resources needed to overcome the challenges of dealing with the imposed change. They found that the managers and their administrative subordinates failed to provide teachers with the retraining and resources necessary to carry out the innovation. These middle-level managers also failed to provide the appropriate supports and rewards to ensure the teachers' willingness to make strong efforts toward effective implementation of the revised curriculum and as a result, teachers were inadequately prepared to face the challenges. Using McLaughlin's (1987) perspective, then, these intermediaries neither pressured nor supported the policy implementers, the teachers.

Although these middle managers' roles are essential and indispensable, Morris and Scott (2003) lamented that middle-level managers are often faced with the task of reconciling the irreconcilable. They feel that they are frequently forced into compromise situations by having to adjust the policy to make it appropriate to their particular institutions as well as acceptable to their teachers. Without modifications, problems may arise from the imposition of a general policy within a unique institutional setting. Berman (1978:164-165) mentioned two classes of problem in the implementation of a national policy. Macro-implementation problems are generally caused by the government, which

intends to “execute its policy so as to influence local delivery organizations to behave in desired ways”. As a result of the government policy, micro-implementation problems spring up when the local organizations feel that they are forced to “devise and carry out their own internal policies”. The clash between these two levels is “sometimes fluid, frequently chaotic, and always conflicting”. He maintained that to have the national policy implemented, local delivery organizations must undergo an adaptive process. Such adaptation suggested that internal and local policies be so devised as to match the general guidelines of the national policy in order to minimize conflict of interest.

Summarizing lessons learned from policy implementation, McLaughlin (1987) suggested that it is in fact desirable that policies should be transformed by the managers, and thereby adapted to conditions of the implementing unit. This transformation and adaptation require middle managers to “muddle through” the local implementation process, which McLaughlin considered not only as an adaptive response to demands for change, but also as the more beneficial response in the long term. To help the adaptation process, she recommended integrating the macro world of policymakers with the micro world of individual implementers. From another perspective, Hope and Pigford (2001) pointed to the significance of collaboration and cooperation between policymakers and implementers (i.e., administrators and teachers alike) during both policy development and implementation. They affirmed that those who shoulder responsibility for policy implementation such as middle managers must also be involved in policy development.

Without such involvement, administrators charged with transforming policy into practice are likely to lack the full understanding of the policy itself and thereby the knowledge of the reason for change, which can in turn result in the lack of motivation necessary to effectively implement a new initiative. Also, just as middle managers must be responsible for the street-level enactors being able to acquire both the capacity and will to implement the change, so must the policymakers themselves take on that responsibility of the middle-level managers by interacting with them and obtaining their feedback. To do otherwise is similar to playing the game of “broken telephone,” where the possibility exists of passing on a distorted version of the policy, as well as the further possibility that the delivery agents may lack a clear understanding of the central reasons for the implementation.

In addition to middle managers’ involvement in policy development, researchers have been cognizant that teachers as implementers are the most important players, and that their participation in policy formulation is key to successful curriculum policy implementation. Wang and Cheng (2005), in discussing an English curriculum project in the Chinese secondary context, found that teachers’ exclusion from full involvement in the decision-making process and consequently their failure to buy into the innovation were part of the reasons accounting for the discontinuation of the project. They said that the significant role that teachers play in curriculum reform must not be overlooked if successful implementation and sustainability are to be achieved. Yet, others said that teachers’ lack of direct involvement at the

policy articulation stage did not prevent them from buying into the policy (Gross, et al., 1971).

Research has also demonstrated that implementers do not always do as told nor do they always act to maximize policy objectives (Cohen and Ball, 1990). Moreover, teachers have often been diagnosed as “resistant to change” or simply lazy, in ignoring or subverting curricular innovations (McLaughlin, 1987). Spillane, et al., (2002) looked at their situation in a different light, explaining that this is because implementers often lack the capacity - the knowledge, skills, personnel, and other resources - necessary to work in ways that are consistent with policy. Spillane et al. warned that even if implementers form understandings that reflect policymakers’ intentions, they may not have the necessary skills and the human and material resources to do what they believe the policy to be asking of them. Moreover, they may simply not understand what is expected of them or do not know how to incorporate the changes into their daily practice. Wang and Cheng (2005) concurred, saying that teachers’ failure to implement policy as policymakers had hoped may signal their uncertainty about outcomes and their personal beliefs that the new practices are not as good as the previous ones. Gross, et al., (1971) found that the teachers’ will to implement the imposed changes declined over time because the change was not supported by their directors of education in ways that assisted them. Again, one could argue that it is not the teachers who are at fault, but rather their supervisors, the middle managers, who are inadequate in both supporting and motivating their subordinates. In other words, the street-level implementers’ difficulties in enacting policy may be in a large part due to

the lack of appropriate support from the middle-level administrators.

Through their study on English language instruction in classrooms in China, Japan, Singapore, Switzerland, and the USA, Silver and Skuja-Steele (2005) examined how policy and classroom practice interact by comparing classroom practices and teachers' statements of pedagogical rationales with governmental policies. They found that teachers were aware of the policy initiatives related to language education. However, teachers were focusing on immediate classroom priorities that influenced daily lessons, and therefore placed their emphasis on student learning. Their findings revealed that language policies were reinterpreted into structural priorities, which indirectly influenced classroom priorities and thereby filtered through into classroom practice. Moreover, teachers' willingness to implement language policies was influenced by the social and personal dimensions of classroom teaching and by teachers' goals and beliefs. In other words, changes were mitigated by the local (contextual) factors.

The grass-roots implementers may not be unwilling to implement the policy, but rather, they may not know how to implement the policy as it has been communicated to them by their intermediaries. Moreover, their intermediaries may not know how to help them. Researchers (Spillane et al., 2002) have discussed impediments to implementation and reasons why implementation fails in actual practice when transmitted through the teachers who are the actual implementers. In summary, these obstacles are: teachers' lack of clear understanding of the innovation; lack of knowledge, skills, and resources needed to conform to the

innovative initiative; incompatibility of organizational arrangements with the innovation; lack of staff motivation; teachers' prior knowledge, beliefs, and experiences; different interpretations of the policies; and teachers' social, organizational, and historical contexts. Combined with the middle-level managers' varying levels of understanding regarding the policy and of how it should/could be implemented, these factors can potentially impede teachers in being able to implement the intended curriculum policies.

C. Curriculum Implementation Model

To find a point of entry wherein curriculum implementation studies can be initiated in the EFL context of Indonesia, there is a necessity to look into previous implementation models where a curriculum innovation has occurred. Due to the complexity of implementing a proposed curriculum, researchers in general education and language education explore what is going on in the "black box" where implementation problems reside. Fullan (1982) and Fullan and Stiegelbauer (1991) stated that research findings have indicated a need to identify factors affecting implementation. The complexity of the educational change process, however, makes it somewhat difficult for researchers to search for different ways to best characterize implementation. This section introduces, and provides a critique of, two curriculum implementation models which explore factors affecting implementation. These two models are from Fullan and Stiegelbauer (1991) and Carless (1999).

Curriculum implementation models proposed by these scholars reflect their approaches to understanding the problems and challenges embedded in the implementation process. They designed their models based on their own

individual contexts, centering on key factors or themes. From an extensive review of literature, Fullan and Stiegelbauer (1991) integrated the two categories of theme and factor and developed a theoretical model (see Fullan and Stiegelbauer, 1991:68) to probe factors that commonly influence changes in practice. They identified three sets of interactive factors affecting implementation. The first factor is change. They argued that the extent of the required change itself, in terms of actual need for change as well as how clear, complex, and practical the change is, plays a role in whether the implementation is successful or not. The second factor is that of the local characteristics, specifically, which district, community, principal, and teacher are involved in the change process. Fullan and Stiegelbauer (1991) discovered that the supports given by the local district school board, community, and principals were also determinants affecting implementation. Particularly, teachers exerted a strong impact in promoting innovation; their perceptions and roles in implementation were indispensable. The third factor is the extent to which government and educational agencies exert their influence on the other stakeholders.

Fullan and Stiegelbauer's (1991) mode of analysis was comprehensive, thought-provoking, and profound, and provided powerful insights into the complexity and the dynamics of educational reform. More importantly, their model has exerted enormous influence on later researchers and scholars interested in curriculum implementation.

However, since their model is based on the North American context and mainly deals with primary and secondary education, some factors, such as district, community, or principal may not be as relevant in the Asian

context as the current study. The situation in Indonesia has displayed unique differences, in political system, social structure, educational system, ideological beliefs, and value orientation, from those of the West. This means that some factors which seem essential in the Western context may not be applicable to the context of this study, which is situated in Indonesia and focuses primarily on English teaching at the secondary level.

While studying EFL teaching in Hong Kong, Carless (1999) developed a conceptual model of factors affecting implementation of curriculum innovation based on the literature reviewed in both general education and language education (see Carless, 1999:375). His three categorizations of teacher-related, innovation-related, and change agent-related factors resonated, to a large extent, with Fullan and Stiegelbauer's (1991) model. Each category matched the local characteristics, the characteristics of change, and the external factors. What is distinctive in Carless' model was his further elaboration of sub variables and what was considered as the appropriateness of these sub variables in Indonesia. This allowed him to investigate in depth what those factors were in each category.

Carless (1999) expanded Fullan and Stiegelbauer's (1991) model with regard to local characteristics. He detailed teacher-related factors into sub variables such as teachers' attitudes, teacher education, and teachers' understanding of change or innovation. He also pointed out that communication strategies, change strategies, and availability of sufficient resources in terms of human, material, and financial are important change-related factors.

However, one flaw in Carless' model lies in the category under the confusing label of "change agent-related factors." Carless (1999:377) defined change agents as "individuals who prompt or facilitate change", but he failed to specify who these individuals were. In fact, "change agent" is a controversial term in the literature as it can be interpreted from many different perspectives. Rogers (1995:27) referred to a change agent as "an individual who influences clients' innovation-decisions in a direction deemed desirable by a change agency". Kennedy (1988:344) also described the entrepreneur who "acts as a link between the different participants and as catalyst for change" as a change agent. However, Scileppi (1988) regarded change agents as individuals who cause or facilitate change. Fullan (1999) questioned the concepts of change agent, suggesting that both teachers and students act as change agents in educational reform. DeLano, Riley, and Crookes (1994) made a similar point and envisaged that within an educational culture, change agents can be found among administrators, teachers, and even students. Carless (1999:374) in fact recognized that his own divisions or groupings of factors risked "artificiality and oversimplification".

Chapter 5

FACTORS AFFECTING THE CURRICULUM IMPLEMENTATION

Based on the review of factors affecting implementation in relation to the context of this current book, the writer has categorized the factors into two groups: external factors and internal factors. External factors are factors that stem from outside the classroom, such as cultural, organizational, or administrative characteristics that teacher and students have little or no control over. While internal, the researcher refers to factors related to teachers and students in the classroom. Because teachers are ultimately held responsible for the implementation, the review of the literature focuses on teachers only, specifically, teacher-related factors such as teachers' beliefs, perceptions, and their understanding and ownership of curriculum

innovation (Carless, 1999). In addition, it is recognized that students are the recipients of curriculum innovation. Student-related factors are thus important in the change and innovation literature; however, they are not touched upon in this review because they are outside the scope of the current study.

These two sets of external and internal factors are not independent, but rather interdependent (Gahin and Myhill, 2001). To present these factors in a meaningful way, the researcher has organized her discussion according to the themes that emerge from the literature, in which various kinds of factors are dealt with. Owing to the scope of the dissertation, not all the factors are discussed extensively. Factors identified and discussed may not be the only ones affecting implementation; however, they are considered to be the most relevant to her current study in the EFL context of Indonesia. The next two sections provide a review of the literature on external and internal factors influencing curriculum implementation.

A. External Factors Affecting Curriculum Implementation

This section focuses on four themes identified in the literature regarding external factors affecting curriculum implementation. While acknowledging the essential roles that these factors play in curriculum implementation, the researcher recognizes that other factors identified in the literature are also important. For example, the cultural appropriateness of innovation is an undeniable factor. Communication among stakeholders during curriculum policymaking and its implementation should also be considered, as should leadership and administration in

terms of support from principals, program managers, and administrators.

1. Testing

Examinations or high-stakes tests exert a considerable impact on what, and how, the teaching and learning are conducted in the classroom. Indonesia is known as a country which places much emphasis on examination, from primary to secondary education. Investigating the influence of testing in Indonesian context will clarify what, how, and why tests impact on classroom teaching.

Test impact has been described in language education as “washback” (Alderson and Wall, 1993) or “backwash” (Spolsky, 1994), meaning that tests have an effect on teaching and learning, the educational system, and the various stakeholders in the education process as well (Andrews, 2004). According to Wall and Alderson (1993:41), “tests can be powerful determiners, both *positively* and *negatively*, of what happens in classrooms”. The powerful impact of testing suggests that “teachers and learners do things *they would not necessarily otherwise do* because of the test” (Alderson and Wall, 1993:117). Since the 1980s, much research has been undertaken on positive and negative washback phenomena of testing on teaching and learning. Researchers (e.g., Turner, 2000) strongly suggested that it is not only possible but also desirable for testing to help bring about beneficial outcomes in teaching and learning.

Prodromou (1995:14) contended that testing has a valuable contribution to make in assessing learners’ proficiency, progress, and achievement, and that it is indispensable for diagnosing learners’ errors. He also argued that tests are “the simplest and most effective form of

extrinsic motivation, of imposing discipline on the most unruly class, and of ensuring attention as well as regular attendance". Pearson (1988:107) asserted that "good tests will be more or less directly usable as teaching and learning activities". To prove that positive washback existed in language classrooms, Turner (2000) conducted a study investigating the impact of the provincial ESL speaking exam at the secondary level in Quebec schools. The positive effect was demonstrated by teachers using more speaking performance tasks in their teaching, and by students expressing satisfaction in having individual practice in speaking.

However, any positive washback is often overshadowed by negative washback. Alderson and Wall (1993) suggested that washback was more complex than had been assumed. Prodromou (1995:14) posited that "professional neglect of the backwash effect (what it is, how it operates, and its consequences) is one of the main reasons why new methods often fail to take root in language classes". Looking at the consequences of testing on teaching in a broad educational context, he stated that negative washback makes good language teaching more difficult. Alderson and Wall (1993:118) elaborated, saying that "for teachers, the fear of poor results, and the associated guilt, shame, or embarrassment, might lead to the desire for their pupil to achieve high scores in whatever way seems possible. This might lead to 'teaching to the test,' with an undesirable narrowing of the curriculum". Chapman and Snyder (2000:460) observed that "teachers' tendencies to teach to the test are often cited as an impediment to introducing new instructional practices".

No matter what effect tests bring to classroom teaching and learning, it is expected that some form of change will occur in classrooms (Wall, 1996). This expectation of utilizing a public examination as a “lever for change”, however, may not necessarily be realistic (Wall, 1996:348). An example to illustrate this point is Cheng’s (1998) study of the washback impact associated with changes in Hong Kong Certificate of Education Examination in English with a view to bringing about a positive effect on classroom teaching. Her research findings indicated that the Hong Kong educational system responded quickly to the task-based and integrated approach to teaching and learning, during which changes in teaching materials took place. Nevertheless, the washback process occurred slowly with no fundamental changes in teaching methods. Cheng (1998:iii) concluded that “using the examination as a change agent can change classroom teaching at the content level, but not at the methodological level”. In order to achieve a genuine rather than superficial change in classroom teaching and learning, joint efforts need to be made in terms of teacher education, materials development, and support from various sources (Cheng, 1998).

2. Textbooks

In the EFL context of Indonesia, textbooks occasionally represent the syllabus and dictate what should be taught in the classrooms. Teachers teach according to textbooks, students acquire language input mainly from textbooks, and achievement tests are designed based on the content of textbooks. Therefore, the indispensable role of textbooks cannot be underestimated. Just as Richards (1998:125) claimed, “in many schools and language

programs the textbooks used in classrooms *are* the curriculum". He further elaborated, if one wants to determine the objectives of a language program, the kind of syllabus being used, the skills being taught, the content the students will study, and the assumptions about teaching and learning that the course embodies, it is often necessary to look no further than the textbooks used in the program itself. To him, textbooks and commercial materials represent the hidden curriculum of many language courses. Indeed, textbooks occupy a dominant position in the school system, regardless of the courses being taught at various levels.

Textbooks are believed to have a positive impact on teachers and their classroom teaching during curriculum implementation (Harmer, 1991; Hutchinson and Torres, 1994; Richards, 1998). As far as teachers are concerned, the benefits of using textbooks are as follows: time advantage (Hutchinson and Torres, 1994), access to more choices of professionally produced resources (Richards, 1998), relieving them from the pressure of searching for original materials (Harmer, 1991), and providing a guide to teach more effectively (Hutchinson and Torres, 1994). Hutchinson and Torres (1994:318) reported teachers' views from a survey about the facilitating role of the textbook, stating, "it[textbook] 'saves time, gives direction to lessons, guides discussion, facilitates giving of homework,' making teaching 'easier, better organized, more convenient,' and learning 'easier, faster, better.' Most of all the textbooks provide confidence and security". Especially for inexperienced teachers, textbooks and teachers' guides can function as teaching training manuals. In ESL courses, these textbooks provide detailed advice on approaches to grammar teaching

in a communicative class, strategies for error correction, the philosophy of process writing and how to implement it - useful information that goes well beyond the context of a particular text (Richards, 1998). With respect to students, textbooks provide an orientation to their learning program, helping them understand what they will be studying, in what sequence, and how much material needs to be covered in the course of their learning (Hutchinson and Torres, 1994).

However, textbooks are also criticized as an impediment to teacher development. Richards (1998) summarized three potential hindrances caused by teachers' use of textbooks. *First*, it can absolve teachers of responsibility, because, "instead of participating in the day-to-day decisions that have to be made about what to teach and how to teach it, it is easy to just sit back and operate the system, secure in the belief that the wise and virtuous people who produced the textbook knew what was good" (Swan,1992:33). *Second*, textbooks can lead to "the unjustifiable attribution of qualities of excellence, authority, and validity to published textbooks" (Richards, 1998:131-132). This may result in teachers failing to look at textbooks critically; they may assume that teaching decisions made in the textbook and teaching manual are better, superior, and more valid than those they made. *Third*, teachers' use of textbooks may lead to "a reduction of the level of cognitive skills involved in the teaching if teaching decisions are largely based on the textbook and the teacher's manual".

No matter what positive or negative impact textbooks bring to classroom teaching, Woodward (1993), in his review of research on textbook use, concluded that use of textbooks depends on the teachers' experience and on the subject

matter being taught. For ESL teaching, the use of textbook and its influence on teaching and learning is different from EFL teaching due to the difference of language learning context, materials used, teaching approaches promoted, and teachers' pedagogical values held.

What is unfortunate is the relatively low number of empirical studies conducted on how teachers use textbooks and the extent to which their teaching is influenced by textbooks. Richards (1998:140) called for a "deconstruction" and "reconstruction" in this regard, proposing that teachers approach textbooks with the expectation of deletion, adaptation, and extension of content to meet both students' needs and their own teaching style. "In this way, the potential negative impact of using textbooks can be minimized and they can find their rightful place in the educational system - namely, as resources to support and facilitate teaching rather than dominate it". However, in the Indonesian secondary context, textbooks are compiled by a government-appointed panel of experts according to the prescribed curriculum. Approved textbooks are written to align with the mandated syllabus and are also tied to national or university assessment (Silver and Skuja-Steele, 2005). EFL teachers have little autonomy in daily classroom instruction but rely exclusively on textbooks; teaching is text-centered (Wang and Han, 2002).

3. Teacher Training

In order that curriculum policy is interpreted into practice and to ensure that successful implementation and continuity of any curriculum innovation exists in the classroom, it is paramount that teachers receive in-service training and provision of ongoing support and professional

development (White, 1993). As Stenhouse (1975) put it, without teacher professional development there can be no curriculum development. Brindley and Hood (1990) claimed that ongoing in-service training and professional development constitute important components of any projected implementation. In-service training focuses on teachers' responsibilities and is aimed toward short-term and immediate goals, whereas professional development seeks to facilitate growth of teachers' understanding of teaching and of themselves as teachers (Richards and Farrell, 2005).

A considerable number of conceptual and empirical studies have been carried out to illustrate the importance of teachers' in-service training and professional development in assisting teachers with their implementation of curriculum innovation. Analyzing 15 empirical studies conducted in the 1970s, Fullan and Pomfret (1977) concluded that in-service training was a factor in seven studies. These studies indicated that teachers who received intensive in-service training had a higher degree of implementation than those who did not.

In the EFL context, in-service training is deemed especially critical in successfully carrying out a proposed curriculum (Li, 1998; Wang and Han, 2002; Cheng and Wang, 2004; Herlina Wati, 2011), such as when the innovative communicative approach is introduced into the local institutions. Li (1998:697) conducted a survey among 18 South Korean secondary school teachers who studied at a Canadian university in the summer of 1995. The exploration of teachers' perceived difficulties in introducing the Communicative Language Teaching (CLT) in South Korea

revealed the main barrier to be teachers themselves. These teachers identified six major constraints preventing them from using CLT: deficiency in spoken English, deficiency in strategic and sociolinguistic competence, lack of training in CLT, few opportunities for retraining in CLT, misconceptions about CLT, and little time and expertise for developing communicative materials. The majority of the reasons were connected with teachers' lack of in-service training to "retrain and refresh themselves in CLT". Without such professional upgrading, it was found to be almost impossible for these Korean EFL teachers to implement communicative activities in their classroom. Li's study was thorough and extensive, but seemed too close-ended in its questionnaire design to obtain in-depth information. The majority of the questionnaire items required yes/no answers, leaving teachers little chance to elaborate. Though interviews were also conducted, the responses from participants fell into the preset perceived-difficulties categories the researcher devised. In so doing, the researcher failed to explore in depth the challenges the participants faced in putting CLT into classroom practice.

Herlina Wati (2011) conducted a study on 55 English teachers in Riau, Indonesia. The study intended to identify the effectiveness of the English teachers training program of elementary school English teachers in Riau province, Indonesia. The study also intended to identify the further needs of the English teachers in attending the training program. The research findings revealed that English language training program was highly effective in terms of overall effectiveness and in improving teachers' confidence and motivation as EFL teachers. But in terms of improving

the basic English knowledge as the most important aspect for being effective EFL teachers was still not effective yet. This aspect became the essential needs of teachers for attending the next training program as stated by the majority of teachers that they needed basic English knowledge which must be given early in the training program. Besides that, the teachers also claimed that the training program should be longer (long term training) because it had proved the training was effective as the useful forum to make them effective English teachers.

However, Thompson and Bates (1995:53) cast doubt upon the usefulness of in-service training. They pointed out that one of the beliefs extant in general in-service training was a misconception, in that attending a training course did not necessarily improve teachers' practice. This unrealistic expectation of what training courses can offer failed to take into consideration teachers' beliefs, attitudes, and other factors. They asserted that "attending a course is only one part of a complex process in which theory becomes interpreted into practice". This in-service training, albeit an important one, must also be connected with other teacher professional development activities.

Morris' (1988) study also revealed teachers' difficulty in using a new teaching approach after in-service training. During the training session which intended to wean economics teachers from a product-based transmission approach to a more process-oriented interpretation one, teachers, when surveyed, expressed favorable attitudes toward the new curriculum. However, when observed in their classrooms, teachers in general reverted to their former transmission type of teaching and did not implement the

innovative approach. The in-service training teachers attended was not apparently seen by the teachers as useful, and therefore did not facilitate the enactment of the new approach.

4. Resource Support

Resource support in terms of human, material, and financial has been considered indispensable in determining the successful implementation of an innovation (Li, 1998; Carless, 1999). Fullan and Miles (1992:750) asserted, change demands additional resources for training, for substitutes, for new materials, for new space, and, above all, for time. Change is “resource-hungry” because of what it represents - developing solutions to complex problems, learning new skills, arriving at new insights, all carried out in a social setting already overloaded with demands. Such serious personal and collective development necessarily demand resources.

Carless (1999) considered teaching materials a crucial resource in the promotion of innovation. He claimed that material support can help minimize the extra workload associated with innovation, and in particular can provide vital support for untrained and inexperienced teachers who have weak subject knowledge. Berman and McLaughlin (1976) found that a significant level of human resource support was important, and that innovations attempted would not have been possible without proper financial support. Kritek (1976) contended that the problems of resource insufficiency were not likely to be solved by providing only more money. More importantly, human support in terms of personnel training and administrator and peer support were believed to maximally increase the

smooth implementation of innovations. Li (1998) found that Korean EFL teachers perceived insufficient funding and lack of in-service training support as roadblocks to implementing communicative approach in their classrooms. Furthermore, Berman and McLaughlin (1976) found that human support from principals and other teachers increased the chances of successful implementation.

B. Internal Factors Affecting Curriculum Implementation

This section focuses on three themes from the literature review. They are: teachers' beliefs and decision-making in innovation; teachers' attitudes towards innovation; teachers' knowledge, understanding, and ownership of innovation as well as teachers' involvement and participation in innovation. Other internal factors also emerge in researchers' discussion. They are teachers' learning background, teachers' age and teaching experience, teachers' personal concerns, teachers' perceived support for the change, alleviation of fears and uncertainties associated with the change, and teachers' preparatory time in getting ready for the change, which are recognized but not further discussed.

1. Teachers' Belief in Decision Making and Innovation

Teachers' beliefs have been described by Kagan (1992:65) as "tacit, often unconsciously held assumptions about students, classrooms, and the academic material to be taught". Teachers' beliefs are related to their classroom practice (Burns, 1992). Pajares (1992:326-328) emphasized that there is a "strong relationship between teachers' educational beliefs and their planning, instructional decisions, and classroom practices" and that "educational beliefs of pre-service teachers play a pivotal role in their

acquisition and interpretation of knowledge and subsequent teaching behavior". Nespor (1987) argued that teachers' beliefs are likely to influence their future behavior. Nevertheless, Fang (1996:53) pointed out inconsistencies between teachers' beliefs and their practices. These inconsistencies reflected the complexities of the classroom reality and implied that "contextual factors can have powerful influences on teachers' beliefs and, in effect, affect their classroom practice".

Discussing the logic of implementation, Fullan and Park (1981) claimed that implementation actually necessitates changes and adjustments in the belief systems of teachers in three aspects, and in succession; first materials, then teaching approach, and finally beliefs. They firmly contended that change in beliefs is much more difficult and time consuming to bring about than changes in materials and teaching methods. Kagan (1992) echoed this, saying that since teachers' beliefs are deeply entrenched, they are generally stable and resistant to change, and that they reflect the nature of the instruction the teacher provides to students. Even teacher education programs may not exert much influence toward their change of beliefs. Richardson (1996:103) asserted that "students [student teachers] bring beliefs to teacher education programs that strongly influence what and how they learn ...central beliefs are more difficult to change". In a similar vein, Tatto (1998:66) added, "teacher education has little effect on altering teachers' beliefs, and changes in practices do not necessarily accompany changes in beliefs".

As well, Shavelson and Stern (1981) argued that what teachers do in their classroom practices is shaped by what

they think, and that teachers' theories and beliefs serve as filters through which instructional judgments and decisions are made and which others' teaching performances are interpreted (Kagan, 1992). Woods (1996:184) stated the importance of the teachers' beliefs on their practice of language teaching, saying, "the teacher's beliefs, assumptions and knowledge play an important role in how the teacher interprets events related to teaching (both in preparation for the teaching and in the classroom), and thus affect the teaching decisions that are ultimately made".

Within the teaching English as a second or foreign language (ESL/EFL) context, both pre-service and in-service teachers are not "empty vessels waiting to be filled with theoretical and pedagogical skills; they are individuals who enter teacher education programs with prior experiences, personal values, and beliefs that inform their knowledge about teaching and shape what they do in their classrooms" (Freeman and Johnson, 1998:401). Teachers' classroom practice is especially influenced by their beliefs and other factors. Woods (1991:4) illustrated this by his longitudinal study of two in-service ESL teachers in a Canadian university who taught the same ESL course but held different theoretical orientations. One teacher had a "curriculum-based" view of teaching, whose decisions related to the implementation of classroom activities were based on what curriculum set out. The other teacher had a "student-based" view, whose decisions were based on the particular group of students in the classroom. This author found that the decisions made in planning and carrying out the course were consistent with deeper underlying assumptions and beliefs about language, learning, and

teaching; yet each teacher's decisions and beliefs differed dramatically from the other along a number of specifiable dimensions.

To see how pre-service teachers' beliefs about teaching grammar were unlocked through the use of a reflective assignment, Farrell (1999) conducted a case study in 1997 among 34 Bachelor of Arts year-4 students taking a grammar methods course at the National Institute of Education in Singapore. Student teachers were given three assignments: past experience reflection on learning and teaching English grammar in schools, a detailed lesson plan on grammar structure teaching, and a final reflection paper on conceptual change process of grammar teaching. Farrell (1999:5) intended to make these pre-service teachers "consciously articulate and examine their beliefs about the role of grammar in English lesson". Also, the author made the students more aware of their own approaches towards teaching English grammar. This consciousness-raising is the first important step to conceptual change.

In a longitudinal study exploring changes in teachers' beliefs about second language learning, Peacock (2001) surveyed 146 trainee ESL teachers over their three-year-program at the City University of Hong Kong. The author assumed that some mistaken ideas held at the beginning of their B.A. TESL program would be changed after they studied TESL methodology. Disappointingly, compared with experienced ESL teachers, some negative beliefs of these pre-service ESL teachers changed very little over their three years of study. In other words, no significant changes were found. Many of the third-year trainees still held that learning a second language means learning a lot of

vocabulary and grammar rules, which is in apparent conflict with the communicative approach advocated in Hong Kong schools. Peacock's survey results reinforced his assumption that ESL teachers' beliefs are slow or very slow to change, and that teacher' beliefs are very difficult to change. However, in analyzing the causes of the beliefs and looking for remedies, the author failed to pinpoint the importance of context which plays a crucial role in helping shape teachers' beliefs.

2. Teacher's Perceptions on Reform

Teacher change, particularly changes in their perspectives towards reform or innovation, has been considered crucial in promoting successful curriculum implementation in the classroom. Hargreaves (1989) claimed that "change in the curriculum is not effected without some concomitant change in the teacher." In their critique of literature on teacher change, Richardson and Placier (2001:922) maintained that "teacher change is not entirely an individually determined, psychological phenomenon". Rather, it is shaped by the social contexts where they work. Carless (1999) also mentioned that teachers' perceptions are derived primarily from their own experiences as learners, their professional training, their teaching experiences, their interaction with colleagues, and the cultural values and norms of the society in which they live. Therefore, whether teachers change their perceptions or not is decided by many intertwining forces characteristic of these teachers and their social context.

Although teachers' perceptions are essential in ensuring successful innovation, they are very often resistant to change. Waugh and Punch (1987) argued that barriers or

resistance to change are likely to take place if the innovation is incompatible with teachers' existing perceptions. In a comprehensive model of how to implement change, they identified the following variables—teachers' personal cost appraisals of the change, practicality of the new educational system in the classroom, perceived support for teacher roles at school, alleviation of fears and uncertainties associated with the change, and perceived expectations and beliefs concerning the important aspects of the change—as substantial elements. The authors said that basic perceptions to education in particular have a strong effect on teacher receptivity to the change in the implementation stage. Nisbet and Collins (1978:3) supported this argument by claiming that "at the point of implementation, it is not easy to change educational principles and methods which are well entrenched and sanctified by tradition".

In general education, a number of empirical studies have been conducted to demonstrate teachers' perceptions. In Western Australia among 841 secondary schoolteachers, Punch and McAtee (1979) explored teachers' perceptions toward the new Achievement Certificate System. Teachers' knowledge about and participation in the change, and their general perceptions to education served as independent variables. These authors found that teachers varied in their level of support for change. This variability was strongly related to teachers' participation in and knowledge about the change. There was a strong positive relationship between teachers' participation and their perceptions, as there was between those perceptions and their knowledge of the system. Among the three independent variables, the most

important predictor was participation, followed by perceptions and knowledge.

What is unique in Punch and McAtee's (1979:182) research design is their identification of school, subject, and teacher as three situation variables for further investigation, in which the main predictors of perception are position in school, number of regional meetings attended, the size of the school, teaching subject area, and gender. Their study revealed that during the implementation of educational change, the independent variables are most influential in revealing teachers' perceptions. Participation in the innovation turned out to be a powerful factor in teachers' support for the change. Nevertheless, the situation variables should not be overlooked, because "they constitute a network of influences which play a role in facilitating or hindering change implementation and in teachers' reception of change".

Looking into the characteristics of teachers' perceptions towards teaching approaches in Hong Kong secondary schools, Morris (1988) reported the results of a research project on curriculum innovation in an economics program. In contrast to the old and traditional teaching approach which centers on the transmission of information and rote learning, the new approach is student-centered, with the intention of transforming the educational ideology and bringing about a radical change in teacher behavior. However, the research findings revealed that "imported innovations produce a façade of change but have little effect on classroom process" (1984:43). In fact, teachers in general did not employ the new approach in classroom practice

despite the fact that they expressed perceptions favorable to the approach.

In language education, Karavas-Doukas (1996:193) took a similar perspective to examine the gap between teachers' expressed perceptions towards the communicative approach and their classroom practices. She investigated 14 EFL teachers in Greek public secondary schools using a Likert-type perception scale. Her perception scale consisted of statements covering the main aspects of the communicative learner-centered approach: group work, error correction, the place and importance of grammar, the needs of students, the role of the teacher and the learner. The scores revealed that teachers on the whole held favorable perceptions towards the communicative approach. However, classroom observations and interviews told a different story, indicating that teachers deviated "considerably from the principles of the communicative approach". In the actual classroom, most lessons conducted were teacher-fronted and grammar-oriented; pair work or group work activities were rarely implemented; teachers followed an eclectic approach, using both traditional and communicative approaches in their classrooms. Karavas-Doukas (1996:65-66) finally concluded, teachers' inability to cope with the demands of the innovation as a result of their inadequate training, the incompatibility of the innovation with teachers' teaching/learning theories, and the failure of the innovation to cater for or mesh with the realities of the classroom and wider educational context were found to be important causes of teachers' resistance or rejection of the innovation.

Since teachers' perceptions have been used by curriculum developers as the primary indicators of whether reforms are successfully implemented or not (Morris, 1988), exploring whether teachers change their perceptions and what, how, and why they do so seems not only necessary but also vital in bridging the gap between curriculum policy and its implementation. At present, two conflicting views exist with regard to the first concern. While some studies have indicated that teachers' perceptions can sometimes be changed, other studies have demonstrated contrary findings.

In a major review of teachers' perceptions towards innovation, Stern and Keilslar (1977:64) stated that "teachers involved in the curriculum planning process have more favorable perceptions towards the implementation of the subject courses than those who were required to represent programs over which they have no control". They contemplated that teachers' perceptions can be changed through training programs, although certain perceptions are more resistant to modification than others. The two authors also put forward some guidelines to facilitate teachers' perception change. They were: creating an accepting environment, encouraging teachers' involvement in innovation, giving teachers responsibility and commensurate authority, setting role models, offering incentives, and providing teachers with adequate preparation time.

Similarly, Bailey (1992:276-277) refuted the claim that "teachers, even with training, do not change the way they teach, but continue to follow the same pattern of teaching" (Gebhard, Gaitan, and Oprandy, 1990:14). From surveys and interviews, she found that teachers do change, but this

change process seemed “slow, gradual, incomplete, partial, ongoing, and evolutionary”. To her, teachers do not always implement the desired changes within a short period of time. Therefore, “anyone who wishes to collaborate in the process of teacher innovation must be patient, receptive, supportive, and accepting of *partial* change”.

Gahin and Myhill (2001) conducted their empirical study using a sample of 120EFL teachers in Egypt to explore their perceptions towards the communicative approach (CA) versus the traditional grammatical approach in teaching. The quantitative data revealed no statistically significant differences between participants according to age and gender, but there were some clear differences according to teachers’ teaching experiences and in-service training attendance. The experienced EFL teachers and their less experienced counterparts were found to be different in their perceptions towards communicative language teaching. Less experienced teachers favored instructional strategies consonant with communicative approaches. These would include focusing on fluency rather than accuracy; use of collaborative activities and audio-visual materials; and avoidance of the mother tongue in class. With respect to the importance of in-service training, results indicated that teachers who had attended training courses were significantly more likely to make use of audio-visual materials as an authentic source of language input. This suggests that training seems to have a positive effect on teachers’ perceptions consonant with the CA. The research findings also highlight that experienced teachers tend to hold the least favorable perceptions toward the newer, more communicative approach. Therefore, the authors called for a

shift in in-service training to be targeted toward experienced teachers, rather than the newly-qualified teachers.

Through a study of an in-service teaching training program, Young and Lee (1987:93) examined whether teachers' perceptions toward EFL curriculum innovation, specifically their perceptions towards knowledge, evaluating learners' performance, and the role of the teacher and that of the learner could in fact be changed. They administered their survey in Hong Kong to 136 primary and secondary EFL teachers before the 90-hour training program, and again to 94 members of the same group upon completion of the program. The results indicated that teachers who attended the in-service training course showed a slight change in perception by the end of the course, but that the change was too small to be statistically significant. "This disappointing result" reinforced their belief that perceptions are resistant to change. The two authors concluded that "teachers' perceptions are a product of values and perceptions within a particular culture, and thus, of all the factors in curriculum innovation, they are the least susceptible to change". They recommended two possible remedies: (1) teacher training programs should make a radical attempt towards changing teachers' perceptions; and (2) curriculum innovators should be aware of the stability of teachers' attitudinal norms within a given society, and devise an efficient curriculum around those norms instead of attempting to change them.

More examples of teachers' perceptions towards curriculum innovation can be seen in the English language teaching field in the EFL context, where language teachers exalt the virtues of the Western innovative communicative teaching approach but feel either reluctant, or incapable of

implementing it in their own classrooms. Their seemingly contradictory perceptions toward learner-centered communicative curricula have been discussed in a number of studies in Indonesia and other Asian countries.

3. Teachers' Knowledge, Understanding, and Ownership of Innovation

Gross et al. (1971:123) claimed that the first major barrier to the implementation was that "teachers never obtained a clear understanding of the innovation". Fullan and Stiegelbauer (1991) called attention to the fact that people always misunderstand and misinterpret some aspects of educational change. Carless (1998) pointed out that teachers should have a thorough understanding of the principles and practices of the proposed change if a curriculum innovation is to be implemented successfully. He emphasized that teachers not only need to understand the theoretical underpinnings of the innovation, but more importantly, how the innovation is best applied in the classroom. Also, in an exploration of how a communicative teaching syllabus was adopted in Greek public secondary schools, Karavas-Doukas (1995) discovered that teachers failed to gain a complete understanding of the EFL innovation there and that their misconceptions resulted in their negative perceptions of the curriculum innovation.

Looking into factors that influence teachers' response to curricular innovations, Brown and McIntyre (1978:19) attempted to learn whether teachers ascribe the same meanings as curriculum planners did. These two authors interviewed science staff from 50 comprehensive schools and asked what they meant by "guided-discovery" and "integration," two examples of labels given to curricular

innovation. The results indicated a mismatch between teachers' interpretations and those of the planners. Teachers' interpretations did not correspond to the planners' interpretations as manifested in the curriculum documents. The consequences were: (1) teachers had no clear idea what was intended by curriculum planners and ignored some aspects of the innovation, and (2) teachers misunderstood the planners' intentions and reacted with disfavor. These authors suggested that "the curriculum planner must further negotiate the meanings ensuring that the teachers both attend to and understand them".

Not only is teachers' understanding of an innovation essential in curriculum policy and its implementation, teachers' ownership of the innovation is also indispensable. Ownership, the extent to which an innovation belongs to the implementers, exerts a considerable impact on whether an innovation is actually implemented, rather than simply staying at the surface level (Kennedy, 1988). Kennedy (1988:168) asserted that "it is necessary to establish a sense of ownership for change to take effect". Referring to teachers as implementers in innovation, he reinforced the notion that the greater the responsibility for decision-making passed on to the implementers, the better, as this encourages ownership. White (1988:213) concurred, saying, "It is also important that all participants feel that they have contributed towards the formulation of the innovation, that they are part of it and that it is part of them. People who are not informed of new developments will tend to lack responsibility toward the innovation".

Especially, "grass-roots" innovations, which are identified by members of an institution or by the users

themselves, are said to stand greater chances of success and be more effectively implemented than those which are imposed or imported from outside (White, 1988). This bottom-up strategy is likely to increase teachers' sense of ownership, because within isolated and insulated classrooms called "egg crate-like compartments" (Lortie, 1975), teachers are likely to resist imposed changes (Hargreaves, 1980). For teachers, these imposed changes can easily lead to teachers' "low morale, dissatisfaction, and reduced commitment" (Sikes, 1992:49).

Teachers' ownership is also discussed in a number of empirical studies in the ESL/EFL innovation literature. From Palmer's (1993:170) involvement in an in-service EFL teacher training program in a Norwegian university, it was found that the more experienced teachers are "more willing to experiment with an innovation when they were given the opportunity to make the idea 'theirs'." He also found that innovations are more easily "adapted by teachers in the way they think is appropriate for their circumstance". He further put forward four steps towards ownership: (a) *experiencing* the innovation; (b) *reflecting* upon the possible impact of the innovation on one's own teaching; (c) *adapting* the innovation to one's own particular circumstances and teaching style; and (d) *evaluating* the innovation in the light of actual experience. These four steps are said to be likely to enable teachers to have a sense of ownership in the implementation of a curriculum innovation.

Exley (2004) reports reports on the experiences of four Australian teachers who provide English as a Foreign Language (EFL) instruction to Indonesian secondary school students in a regional area of Central Java, Indonesia. These

four teachers were all native English speakers and experienced qualified teachers, however, the Australian State Department of Education that sent them to Indonesia did not provide them with formal EFL teaching qualifications or experience. The research theorizes the teachers' talk about their teaching work in Indonesia in an attempt to identify the forms of content knowledge they required to do their teaching. Two significant findings emerged from this research. Firstly, the teachers encountered two distinctively different EFL curricula in Indonesia: the formal EFL Indonesian National Secondary School curriculum and an informal EFL curriculum that the teachers introduced. Each of these curricula required the teachers to draw upon a different content knowledgebase. The second significant finding was that these unqualified and inexperienced EFL teachers were not able to make an effective contribution to the formal EFL Indonesian National Secondary School curriculum because they were not given an opportunity to acquire the requisite content knowledge base. Such findings should be of interest to teachers and program managers involved in EFL curricula.

Another important finding towards the quality improvement of the EFL teaching in Indonesia was carried out by Madya (2010) who stated that the teaching of English in Indonesia has so far been unable to reach its declared goal, which is the students' mastery of the English macro skills listening, speaking, reading, writing. Various factors have certainly contributed to this failure, but the highly centralized curriculum has been one of the many to be blamed for it. The new system of regional autonomy gives sample opportunity to schools/ regions to develop their own

curricula. This will lead to the need for the establishment of standard of English to ensure the achievement of the ultimate goal of teaching English throughout the country. The research suggests that the development of standards for English should involve as many parties concerned as possible, including EFL teachers, EFL teacher educators, and users of school graduates. Another suggestion made related to the aspects to be covered in the standards, namely (1) the qualification of EFL policymakers, EFL teacher educators, and EFL teachers; (2) class size, (3) facilities and equipment, and (4) assessment and evaluation.

Beretta (1996) also touched upon ownership while discussing the Bangalore Communicational Teaching Project (CTP) in South India. Based on what Krashen and Terrell (1983) advocated as the Natural Approach in language acquisition, the project was intended to prove that language form can be acquired in the classroom entirely through a focus on meaning, and that grammar can be learned by the learner in an unconscious manner. In a sharp contrast with the more favorable account given by Brumfit (1984), Beretta (1996:336-339) provided a much more critical assessment of the level of ownership achieved by teachers. From the accounts of 16 Bangalore teachers' experiences, regular teachers were found to fail to come to terms with the demands of the project as well as fail to express high levels of ownership. It also revealed that typical teachers' difficulties with the CTP lay in the excessive demands made on time, discipline, insufficient command of English, and a tendency to revert to structure-based teaching, interpret learning outcomes and to relate them to possible

determinants, people should conduct implementation studies.

Moreover, the entire process of implementation is vividly portrayed as a “black box” (O’Sullivan, 2002). Examining what is occurring in this “black box,” i.e., the process of implementation, may enable the stakeholders to determine if any change has actually occurred and to discover the reasons why change is either impeded or facilitated.

Chapter 6

CONCLUDING REMARKS

Curriculum reform might be viewed as an innovative attempt towards the quality improvement of English teaching in Indonesia. As the School-Based Curriculum has been enacted and the implementation is a must since 2006, it is inevitable of saying that problems of various kinds from curriculum implementation arise. Therefore, the implementation is inherently more complex than what people anticipate.

This complexity can be perceived from several aspects, with stakeholders at different levels interpreting the curriculum policies differently than originally conceived. It might happen that policymakers produce policies with good intentions, but unforeseen and often unwanted results may occur as the policies are interpreted by the local implementing institutions or school management. In other

words, the implementation may be confounded by the resistance of the primary stakeholders, such as teachers. English teachers may view the curriculum reform such as the School-Based Curriculum either negatively or simply differently than as is the intent of the policymakers or view the innovation favorably but not incorporate the curriculum changes into their day-to-day classroom teaching for various reasons.

Thus, it is assumed that the problem of quality is not on curriculum reform but on the way it is perceived and to the level it is interpreted, developed and implemented by the main implementers. Few studies, however, address the issue of how the teachers respond to the implementation of a new government curriculum policy in Indonesian context, particularly issues like curriculum diversification, syllabus development, learning materials, and students' assessment. Hence, this study focuses on teachers' perceptions on the implementation of a current national curriculum, as well as some constraints hinder the teachers in interpreting, developing and implementing the curriculum in their teaching and learning process.

Along this line, the basic premise underlying this study is that the discrepancy of teachers' level of conception and perceptions in curriculum will, to some extent, lead the teachers interpret, develop and implement the curriculum in different ways. The true fact is that teachers hold different belief, knowledge, and skills, but share the same curriculum to implement. As teachers are, to some extent, affected by the ELT contexts on their own, what perceptions do they have about the School-Based Curriculum of ELT? How is the intended curriculum interpreted by the teachers? How do

the teachers develop and implement the diversified curriculum of ELT and the syllabus, construct learning materials and assess students' learning? What constraints do teachers encounter in their attempts at implementing the School-Based Curriculum of ELT?

The review of some literatures has focused on three aspects: the nature of curriculum, ELT School-Based Curriculum as a new reformed curriculum, and curriculum policy and implementation. The concepts of the book have been reviewed in terms of the origin and definitions of curriculum, conceptions of curriculum policy and its implementation, and the stakeholders involved in reform. The purpose is to establish a theoretical basis for further discussion of the factors or variables affecting curriculum implementation, particularly in English language teaching.

The discussions of ELT School-Based Curriculum in this book deals with the ELT curriculum in Indonesian education system and the new policy of ELT curriculum in terms of *diversified curriculum, syllabus, learning materials, and students' assessment*. The purpose of the discussions is to provide background information about School-Based Curriculum of ELT in secondary education in Indonesia as the context to this research.

The discussion of curriculum policy and implementation provides the rationale of curriculum policy and implementation, the major stakeholders and their roles in curriculum implementation, the curriculum implementation model, and the external and internal factors affecting curriculum implementation. Such discussion is aimed at providing the reasons of why implementation

studies are important to conduct, and also describes three types of key stakeholders in implementation as well as their pertinent roles. The discussion is also intended to explore the curriculum implementation models from general education to provide a point of entry to further investigate factors which may facilitate or inhibit curriculum implementation in the English as a foreign language secondary context of Indonesia. The section also deals with the external factors affecting curriculum implementation which are identified as testing, textbooks, teacher training, and resource support; and internal factors affecting curriculum implementation, in this case of teachers' belief in decision making and innovation, teachers' perceptions on reform, and teachers' knowledge, understanding and ownership of innovation.

To guide the researcher's exploration on the teachers' perceptions on School-Based Curriculum, interpretation, and constraints in curriculum implementation, the writer will combine the internal and external factors that influence the curriculum implementation with the topic of ELT School-Based Curriculum in Indonesia. For this reason, it is important for the writer to examine Fullan and Stiegelbauer's (1991) descriptions on characteristics of the internal and external factors affecting teachers in curriculum implementation since teachers' understanding of innovation falls into this category.

In addition, the writer also discussed teacher-related, innovation-related, and change agent-related factors from Carless (1999) and incorporated each sub variable from those factors into her model. For instance, based on her definitions of external and internal factors, she describes Carless' in-service training, resources, communication, and cultural

appropriateness as external factors, and put teachers' perceptions, understanding of the innovation, and ownership into internal factors. The overlap between external and internal factors may indicate the interdependent relationship between these two sets of factors. For the purpose of investigating how the teachers develop and implement the diversified curriculum of ELT and the syllabus, construct learning materials and assess students' learning, the researcher summarizes the regulations and guidelines set by the National Agency for Education Standards protocol for the observation check-list format.

Figure 2 below shows the SBC in relation to other factors. The top layer illustrates that the policymakers have some conceptions and intentions of issuing the new policy of curriculum. The School-Based Curriculum, as it is conceived, intended, and enacted, is to be developed and implemented by teachers at school level as the main developer and implementer. It notices the occurrence of diversified curriculum, syllabus, learning materials and students' assessment. In dealing with the new reformed curriculum, teachers with different background have their own perceptions based on their experience regarding some external and internal factors circumscribe the implementation. Those perceptions will lead the teachers to interpret the development and implementation of the curriculum accordingly. If teachers' factors are consistent with the policymakers' conceptions and intentions, they will underpin the development and implementation of the curriculum. If, on the other hand, teachers' factors are conflicting with the policymakers' conceptions and

intentions, they will likely become constraints hindering the teachers in developing and implementing the curriculum appropriately.

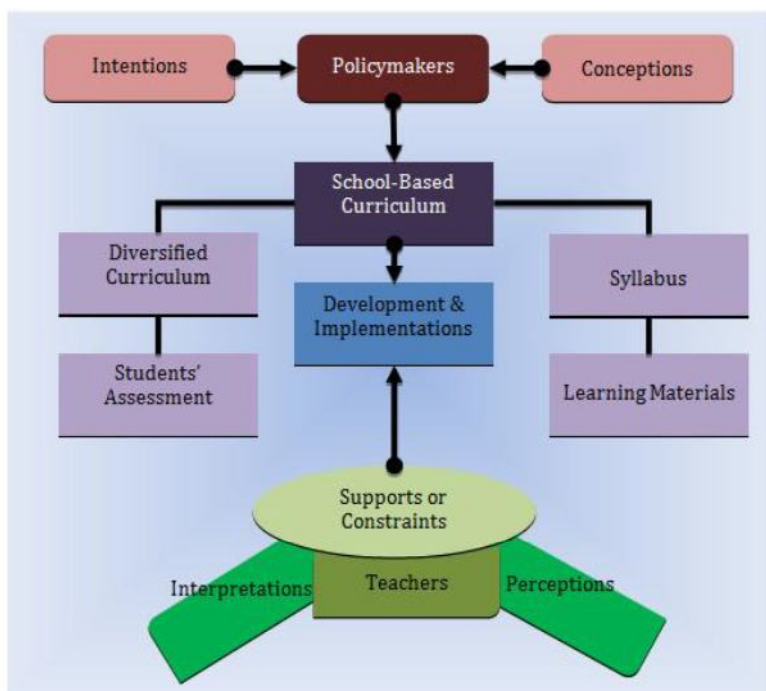


Figure 2.

How do English teachers perceive the School-Based Curriculum of ELT; how the intended curriculum is interpreted, developed, and implemented by the teachers; and what constraints do teachers encounter are central to the attempts at quality improvement of English teaching through national curriculum reform in Indonesian contexts.

BIBLIOGRAPHY

- Alderson, J. C., and Wall, D. 1993. Does Washback Exist? *Applied Linguistics*, 14 (2): 115-129.
- Anderson, J. 1993. Is a Communicative Approach Practical for Teaching English in China? Pros and Cons. *System*, 21(4): 471-480.
- Andrews, S. 2004. Washback and Curriculum Innovation. In L. Cheng and Y. Watanabe (Eds.), *Washback in Language Testing: Research Contexts and Methods* (pp. 37-50). Lawrence Erlbaum Associates, Mahwah, New York.
- Bailey, K. 1992. The Process of Innovation in Language Teacher Development: What, Why and How Teachers Change. In J. Flowerdew, M. Brook, and S. Hsia (Eds.), *Perspectives on Second Language Teacher Education* (pp. 253-282). City Polytechnic, Hong Kong.
- Bekalo, S., and Welford, G. 2000. Practical Activity in Ethiopian Secondary Physical Sciences: Implications for Policy and Practice of the Match between the Intended and the Implemented Curriculum. *Research Papers in Education*, 15 (2): 185-212.
- Beretta, A. 1996. Toward a Methodology of ESL Program Evaluation. *TESOL Quarterly*, 29: 144-155.

- Berman, P. 1978. The Study of Macro- and Micro-Implementation. *Public Policy*, 26 (2): 157-184.
- Berman, P., and McLaughlin, M. W. 1976. Implementation of Educational Innovation. *The Educational Forum*, 40 (3): 345-370.
- _____. 1980. Factors Affecting the Process of Change. In M.M. Milstein (Ed.), *Schools, Conflict, and Change* (pp. 57-71). Teachers College Press, New York.
- Bloom, J. 2006. *Background to Curriculum - Historical Definitions*, (Online), (http://elsci.coe.nau.edu/readarticle.php?article_id=19, retrieved on February 20, 2012)
- Bogdan, R. C & Biklen, S. K. 2003. *Qualitative Research for Education: An Introduction to Theories and Methods* (4thed.). Pearson Education, New York.
- Brindley, G., and Hood, S. 1990. Curriculum Innovation in Adult ESL. In G. Brindley (Ed.), *The second Language Curriculum in Action* (pp. 232-248). National Centre for English Language Teaching and Research, Sydney.
- Brown, J. D. 1995. *The Elements of Language Curriculum*. Heinle and Heinle, Boston, MA.
- Brown, S., and McIntyre, D. 1978. Factors Influencing Teachers' Responses to Curriculum Innovation. *British Educational Research Journal*, 4 (1): 19-23.
- Brumfit, C. J. 1984. The Bangalore Procedural Syllabus. *English Language Teaching Journal*, 38 (4): 233-241.
- Burns, A. 1992. Teacher Beliefs and Their Influence on Classroom Practice. *Prospect*, 7 (3): 56-66.
- Carless, D. 1998. A Case Study of Curriculum Implementation in Hong Kong. *System*, 26: 353-368.

- _____. 1999. Factors Affecting Classroom Implementation: Task-Based Curriculum Renewal in Hong Kong. *International Journal of Educational Reform*, 8 (4): 374-382.
- Chapman, D. W., and Snyder, C. W. Jr. 2000. Can High Stakes National Testing Improve Instruction: Reexamining Conventional Wisdom. *International Journal of Educational Development*, 20 (6): 457-474.
- Cheng, L., and Wang, H. 2004. Understanding Professional Challenges Faced by Chinese Teachers of English. *TESL-EJ*, 7 (4): 1-14.
- Cheng, L. 1998. *The Washback Effect of Public Examination Change on Classroom Teaching: An Impact Study of the 1996 Hong Kong Certificate of Education in English on the Classroom Teaching of English in Hong Kong Secondary Schools*. Unpublished Doctoral Dissertation. Hong Kong: University of Hong Kong.
- Connelly, F. M., and Lantz, O. C. 1991. Definitions of Curriculum: An Introduction. In A. Lewy (Ed.), *The International Encyclopaedia of Curriculum* (pp. 15-18). Pergamon Press, New York.
- Creswell, J. W. 2003. *Research Design: Qualitative, Quantitative, and Mixed Methods Approaches* (2nded.). Sage Publications, Thousand Oaks, CA.
- Darling-Hammond, L. 1990. Instructional Policy Into Practice: "The Power of the Bottom Over the Top." *Educational Evaluation and Policy Analysis*, 12 (3): 339-347.
- De Lano, L., Riley, L., and Crookes, G. 1994. The Meaning of Innovation for ESL Teachers. *System*, 22 (4): 487-496.
- Delaney, J. G. 2002. *Educational Policy Studies: A Practical Approach*. Detselig Enterprises, Calgary, AB.

- Desimone, L. 2002. How Can Comprehensive School Reform Models be Successfully Implemented? *Review of Educational Research*, 72 (3): 433-479.
- Doll, R. 1996. *Curriculum Improvement: Decision Making and Process*. Allyn and Bacon, Needham Heights, MA.
- Dubin, F., and Olshtain, E. 1986. *Course Design: Developing Programs and Materials for Language Learning*. Cambridge University Press, Cambridge.
- Egan, K. 2003. What is Curriculum? *Journal of the Canadian Association for Curriculum Studies*, 1 (1): 9-16, (Online), (<http://www.csse.ca/CACS/JCACS/1.1/JCACS.1.1.c.egan.1978.pdf>, retrieved on August 19, 2011)
- Elmore, R., and Sykes, G. 1992. Curriculum Policy. In Philip W. Jackson (Ed.), *Handbook of Research on Curriculum: A Project of the American Educational Research Association*. Macmillan, New York.
- Exley, B. 2004. Indonesian EFL Curricula: What Content Knowledge Demands do They Make of Australian Teachers?, In McWilliam, E., and Danby, S., and Knight, J.,(Eds), *Performing Educational Research: Theories, Methods and Practices* (pp. 363-374). Post Pressed, Flaxton.
- Fang, Z. 1996. A Review of Research on Teacher Beliefs and Practices. *Educational Research*, 38: 47-65.
- Farrell, T. S. C. 1999. The Reflective Assignment: Unlocking Pre-Service English Teachers' Beliefs on Grammar Teaching. *RELC Journal*, 30 (2): 1-17.
- Fontana, A. and Frey, J. H. 2000. The Interview From Structured Questions to Negotiated Text. In Norman K. Denzin and Yvonna S. Lincoln (Eds). *Handbook of Qualitative Research*. (2nded.) Sage Publications, Inc., London.

- Fox, J. 2005. Revisiting the Storied Landscape of Language Policy Impact Over Time: A Case of Successful Educational Reform. *Curriculum Inquiry*, 35 (3): 261-293.
- Freeman, D., and Johnson, K. E. 1998. Reconceptualizing the Knowledge-Base of Language Teacher Education. *TESOL Quarterly*, 32: 397-417.
- Fuhrman, S. H., and Mallen, B. 1990. *The Politics of Curriculum and Testing: 1990 Yearbook of the Politics of Education Association*. Taylor and Francis, London.
- Fullan, M. 1982. *The Meaning of Educational Change*. OISE Press, Toronto.
- _____. 1999. *Change Forces: The Sequel*. Falmer Press, London.
- Fullan, M., and Miles, M. 1992. Getting Reforms Right: What Works and What Doesn't. *PhiDelta Kappan*, 73 (10): 745-752.
- Fullan, M., and Park, P. 1981. *Curriculum Implementation*. OISE Press, Toronto.
- Fullan, M., and Pomfret, A. 1977. Research on Curriculum and Instruction Implementation. *Review of Educational Research*, 47 (2): 355-397.
- Fullan, M., and Stiegelbauer, S. 1991. *The New Meaning of Educational Change* (2nded.). Teachers College Press, New York.
- Gahin, G., and Myhill, D. 2001. The Communicative Approach in Egypt: Exploring the Secrets of the Pyramids. *TEFL Web Journal*, 1 (2), (Online), (http://www.teflweb-j.org/v1n2/Gahin_Myhill.html, retrieved on July 24, 2011).
- Gebhard, J., Gaitan, S., and Oprandy, R. 1990. Beyond Prescription: The Student Teacher as Investigator. In J.

- C. Richards and D. Nunan (Eds.), *Second Language Teacher Education* (pp. 16-25). Cambridge University Press, Cambridge.
- Gross, N., Giacquinta, J. B., and Bernstein, M. 1971. *Implementing Organizational Innovations: A Sociological Analysis of Planned Educational Change*. Basic Books, New York.
- Guba, E.G., and Lincoln, Y.S. 2005. Paradigmatic Controversies, Contradictions, and Emerging Confluences. In N.K. Denzin and Y.S. Lincoln (Eds.), *The Sage Handbook of Qualitative Research*. (3rded.), (pp. 191-216). Sage Publications, Thousand Oaks.
- Hargreaves, A. 1989. *Curriculum and Assessment Reform*. OISE Press, Toronto.
- Hariwibowo, H. 1994. *Peranan Sistem Evaluasi pada Setiap dan Antar Jenjang Pendidikan. Konvensi Nasional Pendidikan Indonesia II Kurikulum untuk Abad Ke-21*. Grasindo, Jakarta.
- Harmer, J. 1991. *The Practice of English Language Teaching*. Longman, London.
- Herbert, M.W. 1987. Students' Evaluations of University Teaching: Research Findings, Methodological Issues, and Directions for Future Research. *International Journal of Educational Research*. 11 (3): 56-79.
- Herlina Wati. 2011. The Effectiveness of Indonesian English Teachers Training Programs in Improving Confidence and Motivation. *International Journal of Instruction*, 4 (1): 79 - 104.
- Hill, H. C. 2003. Understanding Implementation: Street-Level Bureaucrats' Resources for Reform. *Journal of Public Administration Research and Theory*, 13 (3): 265-267.

- Honig, M. I. 2004. The New Middle Management: Intermediary Organizations in Education Policy Implementation. *Educational Evaluation and Policy Analysis*, 26 (1): 65-87.
- Hope, W. C., and Pigford, A. B. 2001. The Principal's Role in Educational Policy Implementation. *Contemporary Education*, 72 (1): 44-47.
- Hutchinson, T., and Torres, E. 1994. The Textbook as Agent of Change. *English Language Teaching Journal*, 48 (4): 315-328.
- Jackson, P. (Ed.). 1992. *Handbook of Research on Curriculum*. Macmillan, New York.
- Kagan, D. M. 1992. Implications of Research on Teacher Belief. *Educational Psychologist*, 27 (1): 65-90.
- Karavas-Doukas, E. 1995. Teacher Identified Factors Affecting the Implementation of a Curriculum Innovation in Greek Public Secondary Schools. *Language, Culture, and Curriculum*, 8 (1): 53-68.
- Keeves, J.P. 1994. *National Examinations: Design, Procedures, and Reporting*. UNESCO International Institute for Educational Planning, Paris.
- Kennedy, C. 1987. Innovating for a Change: Teacher Development and Innovation. *English Language Teaching Journal*, 41 (3): 163-170.
- Krahnke, K. 1987. *Approaches to Syllabus Design for Foreign Language Teaching*. Prentice-Hall, Englewood Cliff, NJ.
- Krashen, S. D., and Terrell, T. D. 1983. *The Natural Approach: Language Acquisition in the Classroom*. The Alemany Press, Hayward, CA.
- Kritek, W. L. 1976. Lessons from the Literature on Implementation. *Educational Administration Quarterly*, 12 (3): 86-102.

- Lambright, W. H., and Flynn, P. J. 1980. The Role of Local Bureaucracy-Centred Coalitions in Technology Transfer to the City. In J. A. Agnew (Ed.), *Innovation Research and Public Policy* (pp. 243-282). Syracuse University Press, Syracuse, NY.
- Laws, K., and McLeod, R. 2004. *Case Study and Grounded Theory: Sharing Some Alternatives Qualitative Research Methodologies with Systems Professionals*, (Online) (http://www.systemdynamics.org/conferences/2004/SDS_2004/PAPERS/220MCLEO.pdf, retrieved on February 29, 2012)
- Lefstein, A. 2004. *Review of the Book Standards Deviation: How Schools Misunderstand Education Policy*, (Online), (<http://edrev.asu.edu/reviews/rev333.htm>, retrieved on January 10, 2012)
- Li, D. 1998. "It's always more difficult than you plan and imagine": Teachers' Perceived Difficulties in Introducing the Communicative Approach in South Korea. *TESOL Quarterly*, 32 (4): 677-703.
- Linn, R.L., and Gronlund, N.E. 1995. *Measurement and Assessment in Teaching* (7thed). Merrill, Columbus.
- Lipsky, M. 1980. *Street-Level Bureaucracy: Dilemmas of the Individual in Public Services*. Russell Sage Foundation, New York.
- Lortie, D. 1975. *Schoolteacher: A Sociological Study*. University of Chicago Press, Chicago.
- Madya, S. 2010. Developing Standards for EFL in Indonesia as Part of the EFL Teaching Reform. *Indonesian TEFLIN Journal*, (Online), (<http://journal.teflin.org/index.php/teflin/article/viewFile/194/140>, retrieved on February 20, 2012).

- Markee, N. 1993. The Diffusion of Innovation in Language Teaching. *Annual Review of Applied Linguistics: Issues in Second Language Teaching and Learning*, 13: 229-243.
- _____. 1997. *Managing Curricular Innovation*. Cambridge University Press, New York.
- Marshall, M. N. 1994. Sampling for Qualitative Research. *Family Practice*, 13 (6): 522 - 424, (Online), (<http://spa.hust.edu.cn/2008/uploadfile/2009-9/20090916221539453.pdf>, retrieved on February 29, 2012).
- Matland, R. E. 1995. Synthesizing the Implementation Literature: The Ambiguity Conflict Model of Policy Implementation. *Journal of Public Administration Research and Theory*, 5(2): 145-174.
- Maykut, P. and Morehouse, R. 1994. *Beginning Qualitative Research*. The Palmer Press, London.
- McLaughlin, M. W. 1987. Learning from Experience: Lessons from Policy Implementation. *Educational Evaluation and Policy Analysis*, 9 (2): 171-178.
- Mehrens, W.A. and Lehmann, I.J. 1984. *Measurement and Evaluation in Education and Psychology*. Holt, Rinehart and Winston, Inc., New York.
- Mertens, D. M. 1998. *Research Methods in Education and Psychology: Integrating Diversity with Quantitative and Qualitative Approaches*. Sage, London.
- Miles, M. B., and Huberman, A.M. 1984. *Qualitative Data Analysis*. Sage Publications, Inc., California.
- Ministry of National Education. 2004. *Basic Structure of Curriculum*, (3rded). Jakarta: Center for Curriculum Development, National Institute for Research and Development, Ministry of National Education.

- _____. 2006. *Future Curriculum: School-Based Curriculum*. Jakarta: Center for Curriculum Development, National Institute for Research and Development, Ministry of National Education.
- Morris, P., and Scott, I. 2003. Educational Reform and Policy Implementation in Hong Kong. *Journal of Education Policy*, 18 (1): 71-84.
- Morris, P. 1988. Teachers' Attitudes towards a Curriculum Innovation: An East Asian Study. *Research in Education*, 40: 75-87.
- _____. 1995. *The Hong Kong School Curriculum: Development, Issues and Policies*. Hong Kong University Press, Hong Kong.
- Muhaimin, Sutiah, and Prabowo, S. L. 2008. *Pengembangan Kurikulum Tingkat Satuan Pendidikan (KTSP) pada Sekolah dan Madrasah*. PT. Rajagrafindo Persada, Jakarta.
- National Agency for Education Standards. 2006. *Panduan Penyusunan Kurikulum Tingkat Satuan Pendidikan Jenjang Pendidikan Dasar dan Menengah*. Jakarta: BSNP.
- Nespor, J. 1987. The Role of Beliefs in the Practice of Teaching. *Journal of Curriculum Studies*, 19 (4): 317-328.
- Nisbet, R. I., and Collins, J. M. 1978. Barriers and Resistance to Innovation. *The Australian Journal of Teacher Education*, 3 (1): 2-29.
- Nitko, J.A. 1996. *Educational Assessment of Students* (2nded.). Prentice Hall, Inc., Englewood Cliffs, New Jersey.
- Nunan, D. 1988. *Syllabus Design*. Oxford University Press, Oxford.
- O'Sullivan, M. C. 2002. Reform Implementation and the Realities within which Teacherswork: A Namibian Case Study. *Compare*, 32 (2): 219-237.

- Oakes J, Gamoran A, Page R. 1992. Curriculum Differentiation: Opportunities, Outcomes, and Meanings. In PW Jackson (Ed.), *Handbook of Research on Curriculum* (pp. 570-608). Macmillan, New York.
- Opie, C. 2004. *Doing Educational Research*. Sage, London.
- Pajares, M. F. 1992. Teachers' Beliefs and Educational Research: Cleaning Up a Messy Construct. *Review of Educational Research*, 62 (3): 307-332.
- Pal, L. A. 1997. *Beyond Policy Analysis: Public Issue Management in Turbulent Times*. ITP Nelson, Scarborough, Ont.
- . 2006. *Beyond Policy Analysis: Public Issue Management in Turbulent Times* (3rd ed.). Nelson, Toronto.
- Palmer, C. 1993. Innovation and Experienced Teacher. *English Language Teaching Journal*, 47 (2): 166-171.
- Paris, C. 1989. *Contexts of Curriculum Change: Conflicts and Consonance*. Paper presented at the American Educational Research Association, San Francisco, CA.
- Peacock, M. 2001. Pre-Service ESL Teachers' Beliefs about Second Language Learning: Alongitudinal Study. *System*, 29: 177-195.
- Pearson, I. 1988. Tests as Levers for Change. In D. Chamberlain and R. L. Baumgartner (Eds.), *ESP in the Classroom: Practice and Evaluation* (pp. 98-107). Modern English Publications, Great Britain.
- Pinar, W. F., Reynolds, W. M., Slattery, P., and Taubman, P. M. 1995. *Understanding Curriculum: An Introduction to the Study of Historical and Contemporary Curriculum Discourses*. Peter Lang, New York.

- Pollard A, Triggs P. 1997. *Reflective Teaching in Secondary Education: A Handbook for Schools and Colleges*. Cassell, London.
- Popham, W.J. 1995. *Classroom Assessment What Teachers Need to Know*. Allyn and Bacon, Boston.
- Pratt, D. 1994. *Curriculum Planning: A Handbook for Professionals*. Harcourt Brace College Publishers, Toronto.
- Prodromou, L. 1995. The Backwash Effect: From Testing to Teaching. *English Language Teaching Journal*, 49 (1): 13-25.
- Punch K. F., and McAtee, W. A. 1979. Accounting for Teachers' Attitudes towards Change. *The Journal of Educational Administration*, 17 (2): 171-182.
- Richards, J. C. 1998. *Beyond Training: Perspectives on Language Teacher Education*. Cambridge University Press, Cambridge
- _____. 2001. *Curriculum Development in Language Teaching*. Cambridge University Press, Cambridge.
- Richards, J. C., and Farrell, T. S. C. 2005. *Professional Development for Language Teachers: Strategies for Teacher Learning*. Cambridge University Press, Cambridge.
- Richardson, V. 1996. The Role of Attitudes and Beliefs in Learning to Teach. In J. Sikula, T. J. Buttery, and E. Guyton (Eds.), *Handbook of Research on Teacher Education* (2nded.), (pp. 102-119). Macmillan, New York.
- Richardson, V., and Placier, P. 2001. Teacher Change. In V. Richardson (Ed.), *Handbook of Research on Teaching* (4thed.), (pp. 905-947). American Educational Research Association, Washington, DC.

- Robertson, A. S. 1971. Curriculum Building. In L. C. Deighton (Ed.), *The Encyclopedia of Education* (pp. 564-575). Macmillan, New York.
- Rodgers, T. S. 1989. Syllabus Design, Curriculum Development and Policy Determination. In R. K. Johnson (Ed.), *The Second Language Curriculum* (pp. 24-34). Cambridge University Press, Cambridge.
- Rogers, E. M. 1995. *Diffusion of Innovation* (4thed.). The Free Press, New York.
- Saez M, Carretero A. 1998. Innovations in the Spanish Science Curriculum: A View of a Systemic Reform. *Journal of Curriculum Study*, 30(6): 719-738.
- Sasmoko. 1997. "Evaluasi Kualitas Pembelajaran Perguruan Tinggi Teologia Se Indonesia", *Laporan Penelitian*. Dibiayai oleh Direktorat Jenderal Bimbingan Masyarakat Kristen (Protestan) Departemen Agama Republik Indonesia 1996-1997.
- Saylor, J. G., and Alexander, W. M. 1966. *Curriculum Planning for Modern Schools*. Holt, Reinhart and Winston, New York.
- Scileppi, J. A. 1988. *A System View of Education: A Model for Change*. University Press of America, Lanham, MD.
- Shavelson, R. J., and Stern, P. 1981. Research on Teachers' Pedagogical Thoughts, Judgments, Decisions, and Behavior. *Review of Educational Research*, 51 (4): 455-498.
- Sikes, P. J. 1992. Imposed Change and the Experienced Teacher. In M. Fullan and A. Hargreaves (Eds.), *Teacher Development and Educational Change* (pp. 36-55). Falmer Press, London.
- Silver, R. E., and Skuja-Steele, R. 2005. Priorities in English Language Education Policy and Classroom Implementation. *Language Policy*, 4 (1): 107-128.

- Slavia, J., and Ysseldyke, J.E. 1988. *Assessment in Special and Remedial Education* (4thed.). Houghton Mifflin Company, Boston.
- Snyder, J., Bolin, F., and Zumwalt, K. 1992. Curriculum Implementation. In P. Jackson (Ed.), *Handbook of Research on Curriculum* (pp. 402-435). Macmillan, New York.
- Spillane, J. P. 1998. A Cognitive Perspective on the Role of Local Education Agencies in Implementing Instructional Policy: Accounting for Variability. *Educational Administration Quarterly*, 34: 37-51.
- Spillane, J. P., Diamond, J. B., Burch, P., Hallett, T., Jita, L., and Zoltners, J. 2002. Managing in the Middle: School Leaders and the Enactment of Accountability Policy. *Educational Policy*, 16: 731-763.
- Spillane, J. P., Reiser, B. J., and Reimer, T. 2002. Policy Implementation and Cognition: Reframing and Refocusing Implementation Research. *Review of Educational Research*, 72 (3): 387-431.
- Spolsky, B. 1994. The Examination of Classroom Backwash Cycle: Some Historical Cases. In D. Nunan, V. Berry, and R. Berry (Eds.), *Bringing About Change in Language Education* (pp. 55-66). University of Hong Kong, Hong Kong.
- Stenhouse, L. 1975. *An Introduction to Curriculum Research and Development*. Heinemann, London.
- Stern, C., and Keislar, E. R. 1977. Teacher Attitudes and Attitude Change: A Research Review. *Journal of Research and Development in Education*, 10 (2): 63-76.
- Suryabrata, S. 1997. *Pengembangan Tes Hasil Belajar*. Rajawali Press, Jakarta.

- Swan, M. 1992. The Textbook: Bridge or Wall? *Applied Linguistics and Language Teaching*, 2 (1): 32-35.
- Taba, H. 1962. *Curriculum Development: Theory and Practice*. Harcourt Brace, New York.
- Tanner, D., and Tanner, L. N. 1995. *Curriculum Development: Theory into Practice* (3rded.). Merrill/Prentice-Hall, Englewood Cliffs, NJ.
- Tatto, M. T. 1998. The Influence of Teacher Education on Teachers' Beliefs about Purposes of Education, Roles, and Practice. *Journal of Teacher Education*, 49 (1): 66-77.
- Theisen, G., Huges, J., and Spector, P. 1991. "Curriculum Development in Indonesia". In C. Marsh and P. Morris, *Curriculum Development in East Asia*. Teachers College Press, London.
- Thompson, N., and Bates, J. 1995. In-Service Training – Myth and Reality. *Curriculum*, 16 (1): 53-61.
- Timperley, H. S., and Robinson, V. M. J. 1997. The Problem of Policy Implementation: The Case of Performance Appraisal. *School Leadership and Management*, 17 (3): 333-345.
- Tomlinson, B. 1998. *Materials Development in Language Teaching*. Cambridge University Press, Cambridge.
- Turner, C. E. 2000. *Investigating Washback from Empirically Derived Rating Scales: Background and Initial Steps in a Study Focusing on ESL Speaking at the Secondary Level in Quebec Schools*. Paper presented at the 22nd Annual Language Testing Research Colloquium, Vancouver, BC.
- Wall, D., and Alderson, J. C. 1993. Examining Washback: The Sri Lankan Impact Study. *Language Testing*, 10 (1): 41-69.

- Wall, D. 1996. Introducing New Tests into Traditional Systems: Insights from General Education and from Innovation Theory. *Language Testing*, 13 (3): 334-354.
- Wang, H., and Cheng, L. 2005. The Impact of Curriculum Innovation on the Cultures of Teaching. *The Asian EFL Journal Quarterly*, 7 (4): 7-32.
- Wang, H., and Han, H. 2002. The Development of College English Curriculum in China. *Carleton Papers in Applied Language Studies*, 16/17: 75-97.
- Waugh, R., and Punch, K. 1987. Teacher Receptivity of System Wide Change in the Implementation Stage. *Review of Educational Research*, 57 (3): 237-254.
- White, R. 1988. *The ELT Curriculum: Design, Innovation and Management*. Basil Blackwell, Oxford.
- . 1993. Innovation in Curriculum Planning and Program Development. *Annual Review of Applied Linguistics*, 13: 244-259.
- Widdowson, H. G. 1993. Innovation in Teacher Development. *Annual Review of Applied Linguistics*, 13: 260-275.
- Williams, P., Williams, M., Guray, C., Bertram, A., Brenton, R., and McCormack, A. 1994. Perceived Barriers to Implementing a New Integrated Curriculum. *Curriculum Perspectives*, 14 (1): 17-23.
- Woods, D. 1991. Teachers' Interpretations of Second Language Teaching Curriculum. *RELJ Journal*, 22 (2): 1-19.
- . 1996. *Teacher Cognition in Language Teaching*. Cambridge University Press, Cambridge.
- Woodward, A. 1993. Introduction: Learning from Textbooks. In B. K. Britton, A. Woodward, and M. Binkley (Eds.),

Learning from Textbooks: Theory and Practice. Lawrence Erlbaum Associates, Hillsdale, NJ.

Worthen, Blaine R., and James R. Sanders. 1987. *Educational Evaluation: Alternative Approaches and Practical Guidelines.* New York: Longman, New York.

Yalden, J. 1987. *Principles of Course Design for Language Teaching.* Cambridge University Press, Cambridge.

Young, R., and Lee, S. 1987. EFL Curriculum Innovation and Teachers' Attitudes. In R.Lord and H. N. L. Cheng (Eds.), *Language Education in Hong Kong* (pp. 83-97). Chinese University Press, Hong Kong.

Yulaelawati, E. 2004. *National Education Reform in Indonesia: Milestones and Strategies for the Reform Process,* Depdiknas, Jakarta.

Regulations:

Attachment of the Regulation of the Ministry of National Education No. 22/2006

Law No. 20/2003.

The Decree of the Minister of National Education No. 22/2006

The Government Regulation No. 19/2005 Article 17 Verse (2) and Article 20

The Regulation of the Ministry of National Education No. 22/2006

The Regulation of the Ministry of National Education No. 24/2006

Interview:

RSD, LPMP Kota Makassar, Interview, February 28, 2012

NLB, Interview, January 12, 2012.

THE AUTHOR



Djuwairiah Ahmad was born on June 19, 1970 and finished her undergraduate at English Education Department of IKIP Ujung Pandang in 1992. She did her postgraduate works at English Education Department of the State University of Makassar in 2000 and received her Master of TESOL (*Teaching English to Speakers of Other Languages*) from School of Education, Faculty of Education and Human Development, Victoria University, Melbourne, Australia in 2006. She is currently taking her Doctoral Program in Linguistics at the Hasanuddin University, Makassar. She has been a teacher educator for 18 years and is currently a senior lecturer in the Department of English Teaching at UIN Alauddin Makassar.

