

penja ecology

by Cut Muthiadin

Submission date: 22-Jan-2021 05:29PM (UTC+0700)

Submission ID: 1492097296

File name: 6561-Article_Text-30123-1-10-20201001_2.pdf (614.47K)

Word count: 6426

Character count: 33779

Penja fish (Genus: *Sicyopterus*) from Karama River, West Sulawesi, Indonesia: Growth pattern and habitat characteristics

CUT MUTHIADIN^{1,*}, ISNA RASDIANAH AZIZ¹, HASYIMUDDIN¹, FATMAWATI NUR¹, ST. AISYAH SIJID¹,
SAIFULLAH AZMAN¹, RENNY KURNIA HADIATY², ILHAM ALIMUDDIN³

¹Department of Biology, Faculty of Science and Technology, Universitas Islam Negeri Alauddin Makassar. Jl. H.M. Yasin Limpo No. 36 Romangpolong, Gowa 92113, South Sulawesi, Indonesia. Tel./fax.: +62-411-1500363, *email: cutmuthiadin@uin-alauddin.ac.id, isna-rasdianah@uin-alauddin.ac.id

²Zoology Division, Research Center for Biology, Indonesian Institut of Sciences. Jl. Raya Jakarta Bogor Km. 46, Cibinong, Bogor 16911, West Java, Indonesia

³Department of Geological Engineering, Faculty of Engineering, Universitas Hasanuddin. Jl. Poros Malino KM. 6, Bontomarannu, Gowa 92171, South Sulawesi, Indonesia

Manuscript received: 6 August 2020. Revision accepted: 30 September 2020.

Abstract. Muthiadin C, Aziz IR, Hasyimuddin, Nur F, Sijid SA, Azman S, Hadiaty RK, Alimuddin I. 2020. Penja fish (Genus: *Sicyopterus*) from Karama River, West Sulawesi, Indonesia: Growth pattern and habitat characteristics. *Biodiversitas* 21: 4959-4966. Sicydiinae gobies have been widely collected and identified throughout tropical Indo-Pacific, except in Karama River, Mamuju, West Sulawesi, Indonesia. Penja was the goby fish's local name, where their belly has the adhesive disc entirely formed by the pelvic fins. This study aims to describe the habitat and growth patterns of genus *Sicyopterus* in Karama river, which passes through three sub-districts. The research was conducted in Karama River from four sites: Kalumpang, Bonehau, Arassi, and Kalonding. Fish growth was described by Deroberts and William model, and continued with habitat characteristics. The total number of fish from four sites about 71 adults *Sicyopterus* species (family Gobiidae): *Sicyopterus longifilis* and *Sicyopterus pugnans*. The average growth pattern in all sites is isometric negative ($b < 3$), except in the Kalumpang sites, growth pattern for *S. longifilis* is isometric ($b = 3$) whereas in *S. pugnans* in the Kalumpang sites growth pattern is positive allometric ($b > 3$). The value of condition factor (K) ranges between 1.89-2.28, it means the average shape of fish is flat. It is related to the average growth pattern from four sites that are allometric (growth of length more than the growth of weight). Nevertheless, the value of W_r in average 100, which describe that environment of fish is good, related from abiotic measurement in all site showed fit condition for *Sicyopterus* species habitat. Further studies will be focused on the food supply and predator of *Sicyopterus*.

Keywords: Goby fish, growth model, length-weight relationship, *Sicyopterus longifilis*, *Sicyopterus pugnans*

INTRODUCTION

Sicydiinae gobies have shown the highest level of diversity and endemism, classified as amphidromous fishes (Ebner et al. 2011; Keith et al. 2011) that migrates between freshwater and ocean at different stages in their life cycle (Hoareau et al. 2012; Iida et al. 2013; Boseto et al. 2016) which critically on the integrity of the mountain-lake-river-ocean corridor (Roche et al. 2013; Eagderi et al. 2018; Christoffersen et al. 2019). The migration plays an important role in their life cycle, including recruitment, growth, maturation, and reproduction (Ellien et al. 2014; Teichert et al. 2014). The larvae drift immediately downstream to the estuary (Iida et al. 2015), and after 2 to 6 months, the postlarvae migrate back into the rivers (Bauer 2013; Shiao et al. 2015; Ollie et al. 2017; Tran et al. 2018). Besides hydro-ecological characteristics, high-nutrient found in the estuary can cause a high abundance of phytoplankton that affects zooplankton and fish at the early life stage, including postlarvae, which acts as consumers (Bhaumik et al. 2011; Taillebois et al. 2012; Cloern 2018).

Trading of goby fish has been a common practice in traditional markets in the Indo-Pacific area. Gobies caught by fishermen using traps and nets are sold in traditional markets and consumed as alternative food in Philippines (Mahilum et al. 2013; Vedra and Ocampo 2014). In

Taiwan, Japan, China, and Thailand, local people consume gobies in soups and salads due to the delicacy and high nutritional value (Rojtinnakorn et al. 2012; You et al. 2015; Kachhi et al. 2020). Sicydiinae gobies in Indonesia are a typical food of West Sulawesi Province with various preparations (Gani et al. 2019; Nurjirana et al. 2019). The local community usually preserved these fishes by salting and sun-drying then sold them in the traditional and online markets.

Even though Sicydiinae gobies have been collected and identified from freshwater streams throughout the tropical Indo-Pacific, however, it still many islands of this region have never been collected. The lower, middle and upper reaches are the main inhabited parts of rivers in the Pacific area by genus *Sicyopterus* (Ellien et al. 2011; Artzrouni et al. 2014; Keith et al. 2015). On the belly side of the body, these gobies bear the pelvic disc as an adhesive organ (Keith et al. 2014; Lord et al. 2019). The first observation of *Sicyopterus* species (Penja fish) in West Sulawesi was made by some fishermen. They found the juvenile was live in the river. Penja fish were identified as *Sicyopterus* species, and it was hypothesized that Penja fish would school with other species *Awaous melanocephalus* (Muthiadin et al. 2017).

Information about the existence of *Sicyopterus* gobies is only obtained from fishermen and the local community.

Further, there has been no record of *Sicyopterus* species from the selected river on the FishBase database. In this study, we aim to describe *Sicyopterus* species from Karama River, West Sulawesi, Indonesia, along with its growth patterns and morphological characteristic. This study would help improve fishery management strategies in Karama River in order to preserve biodiversity and protect sustainability while maintaining continuous harvesting for domestic and trade commercial.

10 MATERIALS AND METHODS

Study area

The research was conducted in Karama/Karana River, which passes through three sub-districts of Kalumpang, Bonehau, and Sampaga (Figure 1), Pangale District, Mamuju Regency, West Sulawesi Province, Indonesia in May, 2018 with the rainy season. The location used by the fishermen as sampling point of Penja (*Sicyopterus* sp.). Sample found in four sites: Kalumpang, Bonehau, Arassi, and Kalonding.

Procedures

Sampling procedure

Sampling was conducted at four sites (Figure 1). The location used as a sampling point for Gobiidae fish was conducted with fishermen. The samples were caught using

casting nets temporarily stored in each jar. The sampled specimens were preserved in 4% formalin and then transported to the Laboratory of Zoology, Universitas Islam Negeri Alauddin Makassar for further analysis.

Physical data measurement

Habitat characteristics, including the pH, dissolved oxygen (DO), temperature, depth, current velocity, substrate type, salinity, altitude from sea level, and the growth pattern of the fish were recorded (Table 1).

LT and LS measurement

Dial vernier caliper (Tricle brand ®) was used to measure total length (LT) and standard length (LS) of the specimens to the nearest 0.02 mm and weight to the nearest 0.01 g (Kern KB3600) (Keith et al. 2015). The formula: $W = aL^b$ applied to calculate the length-weight relationship, where W is weight in grams, L is total length in centimeters, and a and b are regression coefficient and exponent, respectively (Greenfield and Randall 2010).

Data analysis

This research uses the long-weight relationship formula using the Linear Allometric Model (LAM) equation as an analysis of the sample to be observed based on DeRoberts & William (2008). $W = aL^b$, which W = fish weight (grams), L = total length of fish (mm), a and b parameters.

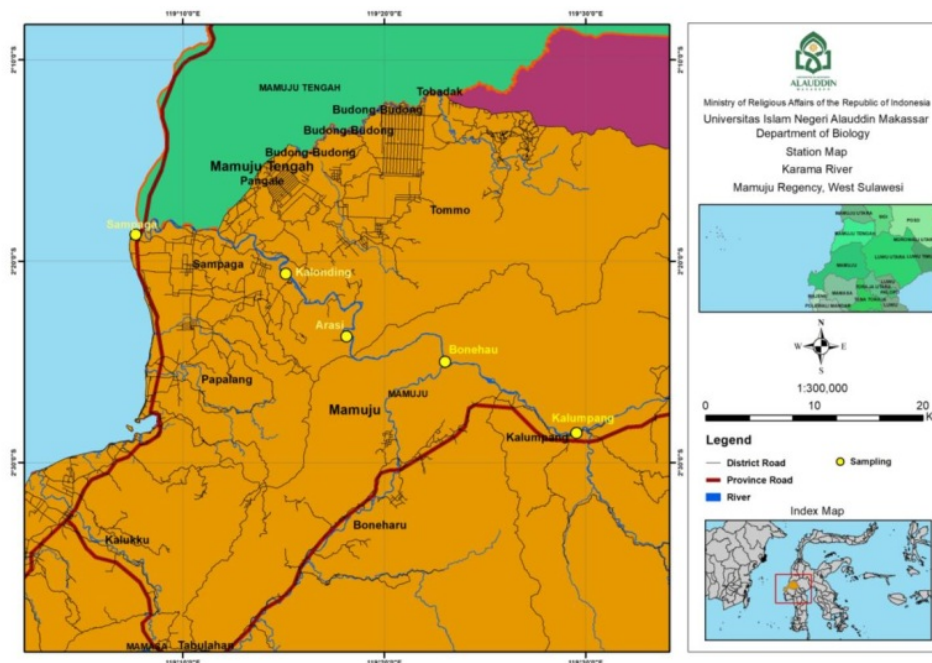


Figure 1. Location of four sampling sites: Kalumpang (2°28'10.0"S, 119°29'05.0"E), Bonehau (2°25'02.0"S, 119°23'01.0"E), Arassi (2°23'11.0"S, 119°18'03.0"E), and Kalonding (2°20'11.0"S, 119°15'03.0"E)

The value of b is used to estimate the growth pattern of the fish which is analyzed whether the value of $b = 3$ or the value of $b \neq 3$. If the value of $b = 3$ shows an isometric growth pattern, which means that the increase in length is the same as the increase in weight, if the value of $b < 3$ shows a negative allometric growth pattern, which means that the length increase is greater than the weight gain and if the value of $b > 3$ shows a positive allometric growth pattern which means the increase in weight is greater than the increase in length. The exponent b often has the coefficient a value close to 3 (in isometry), but ranges between 2 and 4. The value $b = 3$ indicates that the fish grows symmetrically or isometrically. Values other than 3 indicate allometric growth. Data analysis was using Microsoft excel.

RESULTS AND DISCUSSION

The upstream area of Karama is located in Kalumpang village (Kalumpang subdistrict) and the estuary of the river is located in Sampaga village (Sampaga Sub-district) with a long straight line of approximately ± 40 km. The upstream section is at an altitude of ± 90 m above sea level. In this study, data for Sampaga station has excluded. At Kalumpang upstream station, we found 19 samples, 15 samples at Bonehau station, 17 samples at Arassi station, and 20 samples at Kalonding station. We identified two species of Sicydiinae, belonging to Genus *Sicyopterus*: *Sicyopterus longifilis* and *Sicyopterus pugnans*.

The external morphology of Sicydiinae Gobiidae *Sicyopterus longifilis*

The body shape is fusiform and elongated with whitish brown coloration and seven-eight black bands on the body. The ventral margin of the eye is marked with triangular black to the posterior end of the mouth. Mouth ventrally oriented with lateral cleft of the lip and without median cleft. Dentary with four or seven canine (cone)-like symphyseal teeth on each side. Premaxillary teeth is tricuspid. First dorsal fin is whitish with spines elongate and some black spots on the base. One spine in the second dorsal fin and ten soft rays. Second to fourth rays of dorsal fin are filamentous. Caudal fins are about 1-1.2 mm, has pale to grayish coloration and are rounded. Anal fin is dark gray with one spine, ten soft rays, and cycloid scales on the base. Pectoral fins are blackish with white bands at the end. Pelvic fins about 0.6 mm in length translucent and form a strong disk (Figure 2A-H).

Sicyopterus pugnans

The body shape is fusiform and elongated with brownish orange coloration and six pale black bands on the body. The eye to the posterior end of the mouth is marked with pale bands. Mouth ventrally oriented with lateral cleft of the lip and without median cleft. Dentary has two or four canine (cone)-like symphyseal teeth on each side. Premaxillary teeth are bicuspid. First dorsal fin is whitish with spines elongated and without black spots on the base.

One spine is in the second dorsal fin with ten soft rays. Caudal fins are about 0.7-1 mm in length, pale orange, and rounded. Anal fin is pale orange to grayish with one spine and ten soft rays. Cup-like disk is attached to belly. Pectoral fins are pale gray with vague blotchings. Pelvic fins, forming a disk, are about 0.4-0.7 mm in length and translucent (Figure 3A-H).

Habitat characteristics of Sicydiinae Gobiidae

Sandy and rocky substrate is the habitat preference of Sicydiinae Gobiidae in Karama River, in addition to other environmental characteristics that are also interrelated. Data about the characteristics of the habitat and abiotic parameters shown in Table 1.

Length-weight relationship and growth pattern of Sicydiinae Gobiidae

A total of 71 individual adult Sicydiinae Gobiidae found at four sites were dominated by 87% *S. longifilis* while *S. pugnans* was only around 13%. Distribution and results of length-weight relationships are presented in Table 2.

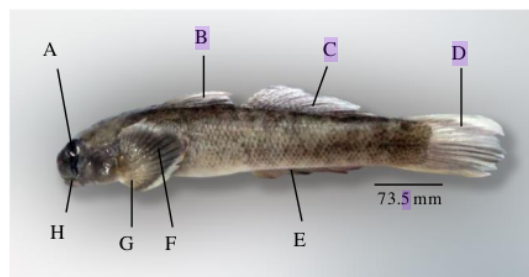


Figure 2. Morphology of *Sicyopterus longifilis* found in Karama River. A: Eye; B: spiny dorsal fin; C: soft dorsal fin; D: caudal fin; E: anal fin; F: pectoral fin; G: pelvic fin; H: mouth

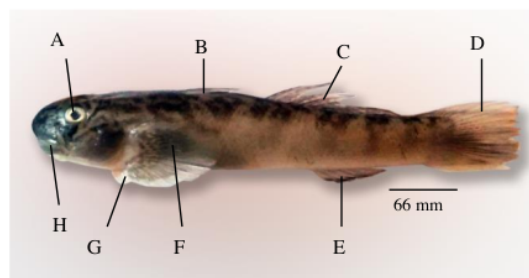


Figure 3. Morphology of *Sicyopterus pugnans* found in Karama River. A: Eye; B: spiny dorsal fin; C: soft dorsal fin; D: caudal fin; E: anal fin; F: pectoral fin; G: pelvic fin; H: mouth

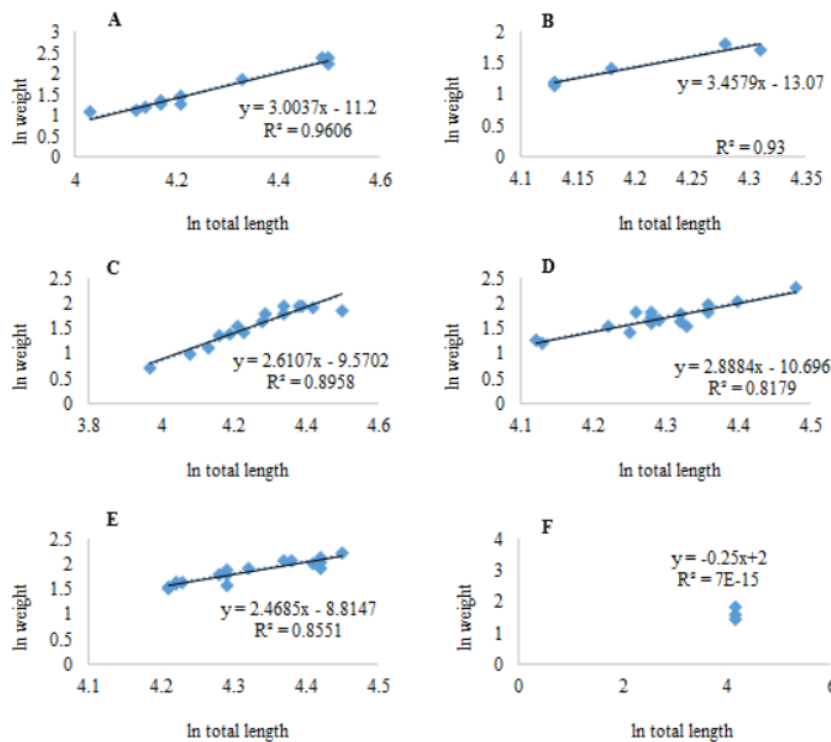
Table 1. Characteristics of Sicydiinae Gobiidae fish habitat in four sites in Karama River, West Sulawesi, Indonesia

Characters of habitat	Site			
	Kalumpang (upstream)	Bonehau	Arassi	Kalonding
Altitude (m a.s.l.)	88	44	31	20
pH	7.5	7.8	7.2	7.9
Temperature (°C)	23	24	25	25
DO (mg/L)	8.1	7.9	7.8	7.5
Brightness (m)	0.32	0.26	0.22	0.23
Velocity (cm.s ⁻¹)	20	140	160	80
Salinity (ppt)	0	0	0	0
Depth (m)	0.46	0.23	0.19	0.17
Substrate	large rocks, slightly, sandy	small rocks, sand	small rocks, sand	small rock, sand

Table 2. Estimated parameters for length-weight relationships in *S. longifilis* and *S. pugnans* in four sample sites

Site	Species	n	Growth pattern	Wr	K
Kalumpang	<i>Sicyopterus longifilis</i>	13	Isometric ($b= 3.003$)	0.960	1.997
	<i>Sicyopterus pugnans</i>	6	positive allometric ($b= 3.457$)	0.936	1.899
Bonehau	<i>Sicyopterus longifilis</i>	15	negative allometric ($b= 2.610$)	0.895	1.974
Arassi	<i>Sicyopterus longifilis</i>	17	negative allometric ($b= 2.888$)	0.817	2.134
Kalonding	<i>Sicyopterus longifilis</i>	17	negative allometric ($b= 2.468$)	0.855	2.282
	<i>Sicyopterus pugnans</i>	3	negative allometric ($b= -0.25$)	0.007	2.196

Note: n = total of individual; Wr = weight relative (g); K = condition factor; a & b = regression coefficient and exponent; where $Ws = aLT^b$



9

Figure 4. Relationship between total length and weight of *Sicyopterus* collected from Kalumpang station. A: *S. longifilis*; B: *S. pugnans*; C: Bonehau station (*S. longifilis*); D: Arassi station (*S. pugnans*); E: Kalonding station (*S. longifilis*); F: *S. pugnans*

Prior to this study, reports and notes regarding the presence and distribution of this genus are still unclear in four sites. The total number of fish from four sites is about 71 adult Gobiidae fish, where *S. longifilis* was found in all sites, whole of 62 samples, nevertheless *S. pugnans* was found nine in total Kalumpang and Kalonding only. The value of b is then used to estimate the growth pattern of the fish analyzed whether $b = 3$ or $b \neq 3$. The scatter plot reflects the exponential growth in weight with increasing length, shown in Figure 4.

Discussion

The description of body shape and morphological structure of Goby fish becomes a vital basis in precise taxonomy and systematic process, with some additional ecological dataset, distribution, growth pattern, and other supporting data. The latest identification data is continuously added to meet the stabilized of a particular genus. Misidentification is inevitable even when the genus taxonomy has sufficiently detailed. Maeda and Saeki (2018) conducted a revision of de Beaufort (1912) with genus *Sicyopterus* description according to their findings in Japan. New records of this genus continues to grow in Indonesia, particularly in Sulawesi. Penja fish was found by Nur et al. (2018) in Karema River, West Sulawesi, but the genus has not been identified. Gani et al. (2019) found *Sicyopterus lagocephalus* and *S. longifilis* in Biak and Koyoan River, Central Sulawesi. *S. longifilis* and *S. pugnans* were also identified by Olii et al. (2019) in Gorontalo Bay and Bone River, Gorontalo waters. A total of 96 individuals of *Sicyopterus* species found by Nurjirana et al. (2019), including *Sicyopterus lagocephalus*, *S. longifilis*, and *Sicyopus zosterophorum* in Leppangan River, West Sulawesi. We identified morphological variations in two species of *Sicyopterus*, sustaining the presence of this genus in Karama River.

The morphology of *S. longifilis* in Karama River (Figure 2) has a different color with *S. longifilis* described by Gani et al. (2019) in Biak River. The body coloration is dominated by brown in *S. longifilis* in Karama River, which is reported to be similar to *S. longifilis* from Japan (Maeda and Saeki 2018), while *S. longifilis* in Biak River is dominated by blue. Black triangular bar was located below the eye. Median cleft at upper lip was not found as Maeda and Saeki (2018) reported in contrast with de Beaufort (1912). Dorsal fin, caudal fins, anal fins, pectoral fin and pelvic fins are similar to characteristics described by Keith et al. (2015). The morphology of *S. pugnans* have in common with *S. longifilis*, except in following cases, the body color, pectoral fin of *S. pugnans* has a pale gray, whereas in *S. longifilis* is black with white bands, *S. longifilis* showed dorsal fin with black mottling on body three fourth, while in *S. pugnans* only on body top and sides (Figure 3).

In general, the value of b depends on the physiological and environmental conditions (Mir et al. 2012; Jisr et al. 2018) such as temperature, climate change, pH, conductivity, salinity, dissolved oxygen, geographical location, and sampling techniques (Pankhurst and Munday

2011; Elboray et al. 2012; Nehemia et al. 2012; Davies et al. 2013; Muchlisin et al. 2015; Makori et al. 2017; Sánchez-González et al. 2020) as well as biological factors, for instance gonadal development and food availability (Ighwela et al. 2011; Hossain et al. 2012; Luin et al. 2013; Akombo et al. 2014). The station's altitude on Karama River reaches 20-88 m above sea level from Sampaga estuary to the upstream of Kalumpang (Table 1). This indicates that *Sicyopterus* can migrate upstream even though its elevation reaches high above sea level (<100 m). In line with this, Teichert et al. (2013) caught *Sicyopterus* species downstream stations (<100 m) on perennial rivers of Reunion Island. In addition, the presence of *Sicyopterus* species also aided by Ebner et al. (2011) at highest density with an elevation of approximately 10-50 m above sea level in Noah Creek and Pauls Pocket Creek.

Rocky substrate mixed with sand is habitat preference of *Sicyopterus* species in Karama River. Rocky surfaces are a growing medium for diatoms and algae, beside the benthic surface. Algae and diatoms as the main source of food scrapped by adults using rake-like of upper jaw premaxillary teeth (Lord et al. 2012; Cullen et al. 2013; Sahara et al. 2016). The rocky substrate also offering hiding spots (Lord et al. 2012; Barbey et al. 2017), safe place for large number of small eggs (Teichert et al. 2013; Ellien et al. 2016), and also as climbing surface using their oral and pelvic sucker with an inching behavior (Blob et al. 2013; Cullen et al. 2013; Christy and Maie 2019).

The average growth pattern in all sites is negative allometric ($b < 3$), except in the Kalumpang sites, growth pattern for *S. longifilis* is isometric ($b = 3$) whereas in *S. pugnans* fish in the station Kalumpang growth pattern is positive allometric ($b > 3$). This implies that *S. longifilis* and *S. pugnans* generally in Karama River become longer, thus making them more slender. The body proportion of these fish in grams is below the increase in total length, which is measured from the tip of snout to the tip of caudal fin (Figure 4). Compared with the findings of Nur et al. (2018), negative allometric growth was also measured on Penja fish in Karema River. Although the total length range is shorter in comparison *Sicyopterus* in Karama River. The growth pattern varies and changeable according to specific environmental, biological factors, and trophic levels (Freitas et al. 2017; Saberi et al. 2017). The negative allometric pattern in this study may be attributed to the adaptation effort of *Sicyopterus* toward the site's condition. The slender body will make easiness to hide in the substrate gap from predator attacks, like a fish-eating bird, crab, and shrimp. There is allometric relation between fish body size and water-flow velocity (Hockley et al. 2014; Del Signore et al. 2016) which interpreted the slender body of *Sicyopterus* will help to improve the swimming velocity and swimming ability through the rocky substrate. Based on water-flow velocity, four sites on Karama River are classified as low (10-25 cm.s⁻¹) to high (>100 cm.s⁻¹) current velocities, respectively; 20, 140, 160, and 80. Low current velocity has an indirect effect on food availability (García et al. 2011; Kemp et al. 2011; Mims et al. 2012) at composition assembly in diatoms. Silica and other organic

matters as the energy source for diatoms found in sand and rock powder can be deposited longer. There are no tidal currents and pressure waves to carry them. In addition, low current velocity may be attributed as a direct effect on aquatic substrate formation in Kalumpang upstream. *S. longifilis* showed a single distribution in two sites in Karama River towards high-flow. This result is similar to the findings reported by Donaldson et al. (2013) that *S. lagocephalus* in Australian wet tropics is one species possible to reach extremely high-flow while incapable of other species.

Condition factors were calculated to assess fish health generally, productivity, and physiological conditions of fish populations (Dalu et al. 2013; Van Beveren et al. 2014; Lederoun et al. 2016). This condition factor reflects the body's morphological characteristics growth rate (Enberg et al. 2012; Ara et al. 2014; Killen et al. 2016). The value of condition factors owned by each fish is expected to have high enough fecundity as a fish adaptation to maintain its population in nature.

The range of condition from the data analysis factor is 1.89-2.28 (Tabel 2), whereas if more > 2 then dominated by fish with maturity level of gonad (Esmacili et al. 2017; Masoomzadeh et al. 2018; Famoofo and Abdul 2020) while weight value observed in each species per station is low and high compared to the predicted weight. This value indicates that there are areas of poor water conditions to support growth, but the value of the condition factor gives an average value above 100. The waters in Karama river provide enough food or low predator density here, but for self-adjusting organisms will grow and reproduce.

In conclusion, adult Gobiidae fish identified as *S. longifilis* and *S. pugnans* found in four sites from Karama River. The average growth pattern in all sites is isometric negative, except in the Kalumpang sites, growth pattern for *S. longifilis* is isometric, while *S. pugnans* shows positive allometric.

REFERENCES

- Akombo PM, Akange ET, Adikwu IA, Araoye PA. 2014. Length-weight relationship, condition factor and feeding habits of *Synodontis schall* (Bloch and Schneider, 1801) in river Benue at Makurdi, Nigeria. *Int J Fish Aquat Stud* 1 (3): 42-48.
- Ara MG, Nobi MN, Fatema MK, Ahmed ZF. 2014. Evaluation of condition factor of a small indigenous freshwater prawn, *Macrobrachium lamarrei* (H. Milne-Edwards, 1837) in Bangladesh. *Int J Nat Soc Sci* 1 (12): 71-76.
- Artzrouni M, Teichert N, Mara T. 2014. A Leslie matrix model for *Sicyopterus lagocephalus* in La Réunion: Sensitivity, uncertainty and research prioritization. *Math Biosci* 256: 18-27. DOI: 10.1016/j.mbs.2014.08.005.
- Barbeyron C, Lefrançois E, Monti D, Keith P, Lord C. 2017. Gardening behaviour of *Sicydium punctatum* (Gobioidae: Sicydiinae): In vitro experiments in the context of chlorocone pollution in Guadeloupe Island rivers. *Cybio* 41 (2): 85-92.
- Bauer RT. 2013. Amphidromy in shrimps: A life cycle between rivers and the sea. *Lat Am J Aquat Res* 41 (4): 633-650. DOI: 103856/vol41-issue4-fulltext-2.
- Bhaumik U, Shrivastava NP, Satpathy BB, Mukhopadhyay MK, Sharma AP. 2011. Impact of hydro-ecology on fish migration in selected east coast estuaries. *J Inland Fish Soc India* 43: 1-9. DOI: 10.3389/fmars.2019.00237.
- Blob RW, Cullen J, Maie T, Schoenfuß HL. 2013. Evolutionary novelty versus exaptation: Oral kinematics in feeding versus climbing in the waterfall-climbing Hawaiian Goby *Sicyopterus stimpsoni*. *PLoS One* 8: 1-10. DOI: 10.1371/journal.pone.0053274.
- Boseto DT, Magnuson SJF, Pezold FL. 2016. Population genetic structure of the goby *Stiphodon rutilaureus* (Gobiidae) in the New Georgia Group, Solomon Islands. *Pac Conserv Biol* 22 (3): 281-291. DOI: 10.1071/PC14934.
- Christoffersen M, Svendsen JC, Behrens JW, Jepsen N, van Deurs M. 2019. Using acoustic telemetry and snorkel surveys to study diel activity and seasonal migration of round goby (*Neogobius melanostomus*) in an estuary of the Western Baltic Sea. *Fisheries Manag Ecol* 26 (2): 172-182. DOI: 10.1111/fme.12336.
- Christy RM, Maie T. 2019. Adhesive force and endurance during waterfall climbing in an amphidromous gobiid, *Sicyopterus japonicus* (Teleostei: Gobiidae): Ontogenetic scaling of novel locomotor performance. *Zool* 133: 10-16. DOI: 10.1016/j.zool.2019.02.001.
- Cloern JE. 2018. Why large cells dominate estuarine phytoplankton. *Limnol Oceanogr* 63: 392-409. DOI: 10.1002/lno.10749.
- Cullen JA, Maie T, Schoenfuß HL, Blob RW. 2013. Evolutionary novelty versus exaptation: Oral kinematics in feeding versus climbing in the waterfall-climbing Hawaiian goby *Sicyopterus stimpsoni*. *PLoS one* 8: 1-10. DOI: 10.1371/journal.pone.0053274.
- Dalu T, Clegg B, Nihwatiwa T. 2013. Length-weight relationships and condition factors of six fish species caught using gill nets in a tropical African reservoir, Zimbabwe. *T Roy Soc S Afr* 68 (1): 75-79. DOI: 10.1080/0035919X.2012.733318.
- Davies OA, Tawari CC, Kwen KI. 2013. Length-Weight Relationship, Condition factor and Sex ratio of *Clarias gariepinus* juveniles reared in concrete tanks. *Int J Environ Sci* 1: 324-329. DOI: 10.12983/ijres-2013-p324-329.
- De Beaufort LF. 1912. On some new Gobiidae from Ceram and Waigen. *Zoologischer Anzeiger* 39: 136-143.
- Del Signore A, Lenders HJR, Hendriks AJ, Vonk JA, Mulder C, Leuven RSEW. 2016. Size-mediated effects of water-flow velocity on riverine fish species. *River Res Appl* 32 (3): 390-398. DOI: 10.1002/rra.2847.
- DeRobert A, William, K. 2008. Weight-length relationship in fisheries studies: the standard allometric model should be applied with caution. *Trans Amer Fish Soc* 137: 707-719.
- Donaldson JA, Ebner BC, Fulton CJ. 2013. Flow velocity underpins microhabitat selection by gobies of the Australian Wet Tropics. *Freshw Biol* 58 (5): 1038-1051. DOI: 10.1111/fwb.12107.
- Eagderi S, Nasri M, Çiçek E. 2018. First record of the Amur goby *Rhinogobius lindbergi* Berg 1933 (Gobiidae) from the Tigris River drainage, Iran. *Int J Aquat Bio* 6 (4): 202-207. DOI: 10.22034/ijab.v6i4.528.
- Ebner BC, Thuesen PA, Larson HK, Keith P. 2011. A review of distribution, field observations and precautionary conservation requirements for sicydiine gobies in Australia. *Cybio* 35 (4): 397-414.
- Elboray K, EL-Halfawy M, Mahmoud W, Ramadan A, Soliman Y, Amin A. 2012. Growth and gonadal maturation of Keeled mullet, *Liza carinata* (Valenciennes, 1836) cultured at different salinities. *Egypt J Aquat Biol* 16 (2): 107-119.
- Ellien C, Valade P, Bosmans J, Taillebois L, Teichert N, Keith P. 2011. Influence of salinity on larval development of *Sicyopterus lagocephalus* (Pallas, 1770) (Gobioidae). *Cybio* 35 (4): 381-390. DOI: 10.26028/cybio/2011-354-011.
- Ellien C, Werner U, Keith P. 2014. Morphological changes during the transition from freshwater to seawater in an amphidromous goby, *Sicyopterus lagocephalus* (Pallas 1770) (Teleostei). *Ecol Freshw Fish* 25 (1): 48-59. DOI: 10.1111/eff.12190.
- Ellien C, Werner U, Keith P. 2016. Morphological changes during the transition from freshwater to sea water in an amphidromous goby, *Sicyopterus lagocephalus* (Pallas 1770) (Teleostei). *Ecol Freshw Fish* 25 (1): 48-59. DOI: 10.1111/eff.12190.
- Enberg K, Jørgensen C, Dunlop ES, Varpe Ø, Boukal DS, Baulier L, Eliassen S, Heino M. 2012. Fishing-induced evolution of growth: Concepts, mechanisms and the empirical evidence. *Mar Ecol* 33 (1): 1-25. DOI: 10.1111/j.1439-0485.2011.00460.x.
- Esmacili HR, Choobineh R, Zareian H, Gholamhosseini A. 2017. Life history traits and gonad histology of an endemic cyprinid fish, Mond spotted barb, *Capoeta mandica* from Southern Iran. *J Environ Sci* 15 (2): 97-112.

- Famoofo OO, Abdul WO. 2020. Biometry, condition factors and length-weight relationships of sixteen fish species in Iwopin fresh-water ecotype of Lekki Lagoon, Ogun State, Southwest Nigeria. *Heliyon* 6 (1): e02957. DOI: 10.1016/j.heliyon.2019.e02957.
- Freitas T, Montag LF, Barthelm RB. 2017. Distribution, feeding and ecomorphology of four species of Auchenipteridae (Teleostei: Siluriformes) in Eastern Amazonia, Brazil. *Iheringia Ser Zool* 107: e2017008. DOI: 10.1590/1678-4766e2017008.
- Gani A, Bakri AA, Adriani DT, Nurjirana N, Herjyanto M, Bungalmi MI, Ndobe S, Burhanuddin AI. 2019. Identification of freshwater goby species from The Biak and Koyuan Rivers, Luwuk Banggai, Central Sulawesi. *Jurnal Ilmu Kelautan Spermonde* 5 (2): 57-60.
- García A, Jorde K, Habit E, Caamaño D, Parra O. 2011. Downstream environmental effects of dam operations: changes in habitat quality for native fish species. *River Res Appl* 27: 312-327. DOI: 10.1002/rra.1358.
- Greenfield DW, Randall JE. 2010. *Eviota karaspila*, a new gobiid fish from Fiji. *Zootaxa* 2672: 61-68.
- Hoareau TB, Boissin E, Berrebi P. 2012. Evolutionary history of a widespread Indo-Pacific goby: The role of Pleistocene sea-level changes on demographic contraction/expansion dynamics. *Mol Phylogenet Evol* 62 (1): 566-572. DOI: 10.1016/j.ympev.2011.10.004.
- Hockley FA, Wilson CAME, Brew A, Cable J. 2014. Fish responses to flow velocity and turbulence in relation to size, sex and parasite load. *J R Soc Interface* 11: 20130814. DOI: 10.1098/rsif.2013.0814.
- Hossain MY, Rahman MM, Fulanda B, Jewel MAS, Ahamed F, Ohtomi J. 2012. Length-weight and length-length relationships of five threatened fish species from the Jamuna (Brahmaputra River tributary) River, northern Bangladesh. *J Appl Ichthyol* 28 (2): 275-277. DOI: 10.1111/j.1439-0426.2011.01900.x.
- Ighwela KA, Ahmed AB, Abol-Munafi AB. 2011. Condition factor as an indicator of growth and feeding intensity of Nile tilapia fingerlings (*Oreochromis niloticus*) feed on different levels of maltose. *Am Eurasian J Agric Environ Sci* 11: 559-563.
- Iida M, Watanabe S, Tsukamoto K. 2013. Riverine life history of the amphidromous goby *Sicyopterus japonicus* (Gobiidae: Sicydiinae). *Environ Biol Fishes* 96: 645-660.
- Iida M, Watanabe S, Tsukamoto K. 2015. Oceanic larval duration and recruitment mechanism of the amphidromous fish *Sicyopterus japonicus* (Gobiidae: Sicydiinae). *Reg Stud Mar Sci* 1: 25-33. DOI: 10.1016/j.rmsa.2015.03.001.
- Jisir N, Younes G, Sukhn C, El-Dakdouki MH. 2018. Length-weight relationships and relative condition factor of fish inhabiting the marine area of the Eastern Mediterranean city, Tripoli-Lebanon. *Egypt J Aquat Res* 44 (4): 299-305. DOI: 10.1016/j.ejar.2018.11.004.
- Kachhi KK, Panhwar SK, Waryani B. 2020. Recent gobies from Pakistan, northern Arabian sea: Diversity and biogeographic affinities. *J Appl Ichthyol* 36 (2): 183-188. DOI: 10.1111/jai.14007.
- Keith P, Hadiaty RK, Busson F, Hubert N. 2014. A new species of *Sicyopterus* (Gobiidae) from Java and Bali. *Cybius* 38 (3): 173-178. DOI: 10.26028/cybius/2014-383-002.
- Keith P, Lord C, Busson F, Sauri S, Hubert N, Hadiaty RK. 2015. A new species of *Sicyopterus* (Gobiidae) from Indonesia. *Cybius* 39 (4): 243-248. DOI: 10.26028/cybius/2015-394-001.
- Keith P, Marquet G, Taillebois L. 2011. Discovery of the freshwater genus *Sicyopus* (Teleostei: Gobiidae: Sicydiinae) in Madagascar, with a description of a new species and comments on regional dispersal. *J Nat Hist* 45 (43-44): 2725-2746. DOI: 10.1080/00222933.2011.602479.
- Kemp P, Sear D, Collins A, Naden P, Jones I. 2011. The impacts of fine sediment on riverine fish. *Hydrol Process* 25 (11): 1800-1821. DOI: 10.1002/hyp.7940.
- Killen SS, Glazier DS, Rezende EL, Clark TD, Atkinson D, Willener AS, Halsey LG. 2016. Ecological influences and morphological correlates of resting and maximal metabolic rates across teleost fish species. *Am Nat* 187 (5): 592-606.
- Lederoun D, Laléye PA, Vreven EJ, Vandewalle P. 2016. Length-weight and length-length relationships and condition factors of 30 actinopterygian fish from the Mono basin (Benin and Togo, West Africa). *Cybius* 40 (4): 267-274.
- Lord C, Bellec L, Dettai A, Bonillo C, Keith P. 2019. Does your lip stick? Evolutionary aspects of the mouth morphology of the Indo-Pacific clinging goby of the *Sicyopterus* genus (Teleostei: Gobiidae: Sicydiinae) based on mitogenome phylogeny. *J Zool Syst Evol Res* 57 (5): 910-925. DOI: 10.1111/jzs.12291.
- Lord C, Lorian J, Dettai A, Watanabe S, Tsukamoto K, Cruaud C, Keith P. 2012. From endemism to widespread distribution: Phylogeography of three amphidromous *Sicyopterus* species (Teleostei: Gobiidae: Sicydiinae). *Mar Ecol Prog Ser* 455: 269-285. DOI: 10.3354/meps09617.
- Luin M, Fui CF, Senoo S. 2013. Sexual maturation and gonad development in tiger grouper (*Epinephelus fuscoguttatus*) x giant grouper (*E. lanceolatus*) hybrid. *J Aquac Res Develop* 5: 2. DOI: 10.4172/2155-9546.1000213.
- Maeda K, Saeki T. 2018. Revision of species in *Sicyopterus* (Gobiidae: Sicydiinae) described by de Beaufort (1912), with a First Record of *Sicyopterus longifilis* from Japan. *Species Div* 23 (2): 253-262. DOI: 10.12782/specdiv.23.253.
- Mahilum JJ, Camama C, Lalisán JA, Vedra SA. 2013. Morphology of goby species, *Glossogobius celebius* (Valenciennes 1837) and *Glossogobius giurus* (Hamilton 1822) in Lake Lanao, Mindanao, Philippines. *Int J Res Biosci* 2 (3): 66-78.
- Makori AJ, Abuom PO, Kapiyo R, Anyona DN, Dida GO. 2017. Effects of water physico-chemical parameters on tilapia (*Oreochromis niloticus*) growth in earthen ponds in Teso North Sub-County, Busia County. *Fish Aquat Sci* 20: 30. DOI: 10.1186/s41240-017-0075-7.
- Masoomizadeh SZ, Pazooki J, Valinassab T. 2018. Changes in length-weight relationship and condition factor of Talang queenfish (*Scomberoides commersonianus*) in the north-west Persian Gulf. *Iran J Fish Sci* 17 (1): 118-136.
- Mims MC, Olden JD. 2012. Life history theory predicts fish assemblage response to hydrologic regimes. *Ecol* 93 (1): 35-45. DOI: 10.1890/11-0370.1.
- Mir JJ, Sarkar UK, Dwivedi AK, Gusain OP, Pal A, Jena JK. 2012. Pattern of intrabasin variation in condition factor, relative condition factor and form factor of an Indian major carp, *Labeo rohita* (Hamilton-Buchanan, 1822) in the Ganges basin, India. *Eur J Biol Sci* 4 (4): 126-135. DOI: 10.5829/idosi.ejbs.2012.4.4.6448.
- Muchlisin ZA, Batubara AS, Azizah MNS, Adlim M, Hendri A, Fadli N, Muhammadar AA, Sugianto S. 2015. Feeding habit and length weight relationship of keureling fish, *Tor tambra* Valenciennes, 1842 (Cyprinidae) from the western region of Aceh Province, Indonesia. *Biodiversitas* 16 (1): 89-94. DOI: 10.13057/biodiv/d160112.
- Muthiadin C, Aziz IR, Andriyani AA. 2017. *Awaous melanocephalus*: Ikan native species dari Sulawesi Barat (sebuah review). Prosiding Seminar Nasional Biology for Life, Jurusan Biologi UIN Alauddin Makassar, Gowa, 6-10 November 2017. [Indonesian].
- Nehemia A, Maganira JD, Rumisha C. 2012. Length-Weight relationship and condition factor of tilapia species grown in marine and fresh water ponds. *Agr Biol J N Am* 3 (3): 117-124. DOI: 10.5251/abjna.2012.3.3.117.124.
- Nur M, Omar SBA, Dahlan MA. 2018. Struktur ukuran dan tipe pertumbuhan ikan penja di perairan sungai Karema, Provinsi Sulawesi Barat. *Jurnal Saointek Peternakan dan Perikanan* 2 (1): 43-47. [Indonesian].
- Nurjirana N, Haris A, Sahami FM, Keith P, Burhanuddin AI. 2019. Preliminary note on the morphological characters of penja (amphidromous goby postlarvae) in West Sulawesi and Gorontalo Bay. Proceeding of the 2nd International Symposium on Marine Science and Fisheries (ISMP2). Universitas Hasanuddin, Makassar, 22 June 2019. [Indonesian].
- Olii AH, Sahami FM, Hamzah SN, Pasingi N. 2017. Preliminary findings on distribution pattern of larvae of nika fish (*Awaous* sp.) in the estuary of Bone River, Gorontalo Province, Indonesia. *Aquac Aquar Conserv Legis Bioflux* 10 (5): 1110-1118.
- Olii AH, Sahami FM, Hamzah SN, Pasingi N. 2019. Molecular approach to identify gobioid fishes, Nika and Hundala (local name), from Gorontalo Waters, Indonesia. *Online J Biol Sci* 19 (1): 51-56. DOI: 10.3844/ojbsci.2019.51.56.
- Pankhurst NW, Munday PL. 2011. Effects of climate change on fish reproduction and early life history stages. *Mar Freshw Res* 62 (9): 1015-1026. DOI: 10.1071/MF10269.
- Roche KF, Janač M, Jurajda P. 2013. A review of Gobiid expansion along the Danube-Rhine corridor-geopolitical change as a driver for invasion. *Knowl Manag Aquat Ecosyst* 411: 1-23. DOI: 10.1051/kmae/2013066.
- Rojtinnakorn J, Rittiplang S, Tongsir S, Chaibu P. 2012. Tumeric extract inducing growth biomarker in sand goby (*Oxyeleotris marmoratus*). Proceedings of the 2nd International Conference on Chemical, Biological and Environment Sciences (ICCEBS 2012). International

- Academy of Arts, Science and Technology, Bali, 30 June-1 July 2012.
- Saberi M, Paighambari SY, Darvishi M, Farkhondeh-Shilsar G. 2017. Length-weight relationships of six fish species from the Coastal Waters of Jask, Iran. *J Appl Ichthyol* 33 (6): 1226-1228. DOI: 10.1111/jai.13326
- Sahara N, Moriyama K, Iida M, Watanabe S. 2016. Time and order of eruption of first functional teeth in the upper jaw of post-larval life of *Sicyopterus japonicus* (Gobiidae: Sicydiinae) during cranial metamorphosis at the time of river recruitment. *Arch Oral Biol* 66: 8-14. DOI: 10.1016/j.archoralbio.2016.02.005
- Sánchez-González JR, Arbonés A, Casals F. 2020. Variation over time of length-weight relationships and condition factors for four exotic fish species from a restored shallow lake in NE Iberian Peninsula. *Fishes* 5 (1): 1-8. DOI: 10.3390/fishes5010007
- Shiao JC, Tzeng CS, Li PC, Bell KN. 2015. Upstream migration and marine early life history of amphidromous gobies inferred from otolith increments and microchemistry. *Environ Biol Fish* 98: 933-950.
- Taillebois L, Maeda K, Vigne S, Keith P. 2012. Pelagic larval duration of three amphidromous *Sicydiinae* gobies (Teleostei: Gobioidae) including widespread and endemic species. *Ecol Freshw Fish* 21 (4): 552-559. DOI: 10.1111/j.1600-0633.2012.00575.x
- Teichert N, Keith P, Valade P, Richardson M, Metzger M, Gaudin P. 2013. Breeding pattern and nest guarding in *Sicyopterus lagocephalus*, a widespread amphidromous Gobiidae. *J Ethol* 31: 239-247.
- Teichert N, Valade P, Fostier A, Lagarde R, Gaudin P. 2014. Reproductive biology of an amphidromous goby, *Sicyopterus lagocephalus*, in La Reunion Island. *Hydrobiologia* 726: 123-141. DOI: 10.1007/s10750-013-1756-6
- Tran TT, Tran HD, Nguyen HX. 2018. Larval description and habitat utilization of an amphidromous goby, *Redigobius bikolanus* (Gobiidae). *Anim Biol J* 68 (1): 15-26. DOI: 10.1163/15707563-17000079
- Van beveren E, Bonhommeau S, Fromentin JM, Bigot JL, Bourdeix JH, Brosset P, Roos D, Sarau C. 2014. Rapid changes in growth, condition, size and age of small pelagic fish in the Mediterranean. *Mar Biol* 161: 1809-1822.
- Vedra SA, Ocampo PP. 2014. The fishery potential of freshwater gobies in Mandulog River, Northern Mindanao, Philippines. *Asian J Agric Dev* 11 (1): 1-9. DOI: 10.22004/agecon.200295
- You J, Yue Y, Xing F, Xia W, Lai S, Zhang F. 2015. Tetrodotoxin poisoning caused by Goby fish consumption in southeast China: A retrospective case series analysis. *Clinics* 70 (1): 24-29. DOI: 10.6061/clinics/2015(01)05.

ORIGINALITY REPORT

18%

SIMILARITY INDEX

15%

INTERNET SOURCES

12%

PUBLICATIONS

6%

STUDENT PAPERS

PRIMARY SOURCES

1

Submitted to Universitas Jenderal Soedirman

Student Paper

2%

2

biodiversitas.mipa.uns.ac.id

Internet Source

1%

3

repository.ipb.ac.id

Internet Source

1%

4

tel.archives-ouvertes.fr

Internet Source

1%

5

C. Valle, J. T. Bayle, A. A. Ramos. "Weight-length relationships for selected fish species of the western Mediterranean Sea", Journal of Applied Ichthyology, 2003

Publication

1%

6

orbit.dtu.dk

Internet Source

1%

7

Syafrialdi ., Dahelmi ., Dewi Imelda Roe, Hafrijal Syandri. "Length-Weight Relationship and Condition Factor of Two-Spot Catfish (*Mystus nigriceps* [Valenciennes, 1840]) (Pisces,

1%

Bagridae), from Kampar Kanan River and
Kampar Kiri River in Indonesia", Pakistan
Journal of Biological Sciences, 2020

Publication

8

M. Afzal Khan, Shahista Khan, Kaish Miyan.
"Studies on Length-weight and Length-length
Relationships of Four Freshwater Fishes
Collected from River Ganga", Journal of
Fisheries and Aquatic Science, 2012

Publication

1 %

9

www.ijsr.net

Internet Source

1 %

10

mafiadoc.com

Internet Source

1 %

11

Submitted to Universitas Diponegoro

Student Paper

<1 %

12

I Dewiyanti, S Aminah, A Helmahera, N
Nurfadillah, C N Defira. "Growth patterns and
condition factor of fish live in Kuala Gigieng
waters of Aceh Besar as the basic for
sustainable fisheries development", IOP
Conference Series: Earth and Environmental
Science, 2020

Publication

<1 %

13

researchonline.jcu.edu.au

Internet Source

<1 %

14	dspace.stir.ac.uk Internet Source	<1 %
15	onlinelibrary.wiley.com Internet Source	<1 %
16	Submitted to UC, Irvine Student Paper	<1 %
17	ir.amu.ac.in Internet Source	<1 %
18	www.mnhn.fr Internet Source	<1 %
19	hdl.handle.net Internet Source	<1 %
20	Renato B. Dala-Corte, Lucas De Fries. "Inter and intraspecific variation in fish body size constrains microhabitat use in a subtropical drainage", Environmental Biology of Fishes, 2018 Publication	<1 %
21	www.bioflux.com.ro Internet Source	<1 %
22	ir.canterbury.ac.nz Internet Source	<1 %
23	Pierre Cresson, Tiphaine Chouvelon, Paco Bustamante, Daniela Bănară et al. "Primary	<1 %

production and depth drive different trophic structure and functioning of fish assemblages in French marine ecosystems", Progress in Oceanography, 2020

Publication

24

www.hindawi.com

Internet Source

<1 %

25

www.aebindia.org

Internet Source

<1 %

26

pdfs.semanticscholar.org

Internet Source

<1 %

27

orca.cf.ac.uk

Internet Source

<1 %

28

www.tandfonline.com

Internet Source

<1 %

29

prezi.com

Internet Source

<1 %

30

agroaid-bd.org

Internet Source

<1 %

31

worldwidescience.org

Internet Source

<1 %

32

www.scielo.br

Internet Source

<1 %

33

digital.csic.es

Internet Source

<1 %

34

www.nature.com

Internet Source

<1 %

35

DONALDSON, JAMES A., BRENDAN C. EBNER, and CHRISTOPHER J. FULTON.

"Flow velocity underpins microhabitat selection by gobies of the Australian Wet Tropics :",
Freshwater Biology, 2013.

Publication

<1 %

36

Francesco Pomati, Jonathan B. Shurin, Ken H. Andersen, Christoph Tellenbach, Andrew D. Barton. "Interacting Temperature, Nutrients and Zooplankton Grazing Control Phytoplankton Size-Abundance Relationships in Eight Swiss Lakes", Frontiers in Microbiology, 2020

Publication

<1 %

37

Marion I. Mennesson, Céline Bonillo, Eric Feunteun, Philippe Keith. "Phylogeography of *Eleotris fusca* (Teleostei: Gobioidae: Eleotridae) in the Indo-Pacific area reveals a cryptic species in the Indian Ocean", Conservation Genetics, 2018

Publication

<1 %

38

archive.org

Internet Source

<1 %

39

Teichert, Nils, Pierre Valade, Henri Grondin, Emma Trichet, Fany Sardenne, and Philippe

<1 %

Gaudin. "Pelagic larval traits of the amphidromous goby *Sicyopterus lagocephalus* display seasonal variations related to temperature in La Réunion Island", *Ecology Of Freshwater Fish*, 2014.

Publication

40

Omar Pérez-Reyes, Todd A. Crawl, Alan P. Covich. "Comparison of decapod communities across an urban-forest land use gradient in Puerto Rican streams", *Urban Ecosystems*, 2015

Publication

<1%

Exclude quotes On

Exclude bibliography On

Exclude matches Off