

Novel chitinolytic bacteria from the shrimp shell processing waste

by Mashuri Masri

Submission date: 25-Nov-2021 08:40PM (UTC+0700)

Submission ID: 1712635453

File name: 8019-Article_Text-41537-1-10-20210428.pdf (642.97K)

Word count: 7016

Character count: 38906

Novel chitinolytic bacteria from the shrimp shell processing waste

MASHURI MASRI^{1,*}, EKA SUKMAWATY¹, LASINRANG ADITIA^{1,2}

¹Department of Biology, Faculty of Science and Technology, UIN Alauddin. Jl. H.M. Yasin Limpo No. 36, Romangpolong, Gowa 92118, South Sulawesi, Indonesia. Tel./fax.: +62-411-8221400, *email: mashuri.masri@uin-alauddin.ac.id

²Graduate Program of Biology, Department of Biology, Faculty of Science and Technology, UIN Alauddin. Jl. H.M. Yasin Limpo No. 36, Romangpolong, Gowa 92118, South Sulawesi, Indonesia

Manuscript received: 19 February 2021. Revision accepted: 19 April 2021.

Abstract. Masri M, Sukmawaty E, Aditia L. 2021. Novel chitinolytic bacteria from the shrimp shell processing waste. *Biodiversitas* 22: 2672-2681. Chitinase is an enzyme that hydrolyzes chitin (β -1,4 Nsetyl-D-glucosamine polymer). Several types of microorganisms produce chitinase that contributes to basic science and application. The role of chitinase enzyme is widely utilized in various fields, such as health as an anti-tumor agent and agriculture as biological control agents in plant disease caused by fungus. The purpose of this study was to isolate novel chitinolytic bacteria from shrimp shell waste in Makassar, Indonesia, using the scatter plate method on chitin agar selective media incubated at 37°C for 3 days. The clear zone formation around the colony was marked as an indicator of chitinase activity performed by the certain isolate. Selection was carried out by recycling all isolates on chitin agar media, which were incubated at 37°C for 3 days and measured the chitinolytic index. Two of ten isolates produced the highest chitinolytic index, namely, KLA-2 (45) and KLA-4 (15) isolates. The molecular identification results showed that the KLA-2 and KLA-4 isolates were *Lysinibacillus fusiformis* strain WH22 and *Brevibacillus reuszeri* strain CMB-15, respectively. Therefore, novel chitinolytic bacteria that can produce chitinase enzyme from shrimp shell waste are *L. fusiformis* and *B. reuszeri*.

Keywords: *Brevibacillus reuszeri*, chitinase enzyme, *Lysinibacillus fusiformis*, shrimp shell waste of factory

INTRODUCTION

Chitin is a polysaccharide composed of β -1,4-N-acetylglucosamine (Halder et al. 2013; Junianto et al. 2013). Chitin has a crystallized, stable, rigid, and water-insoluble structure in the animal exoskeletons due to N-acetylglucosamine polymer chain that contains hydrogen bonds between molecules to form microfibrils (Elieh-Ali-Komi and Hamblin 2016; Dliyauddin et al. 2020).

The abundance of chitin in nature is ranked in second place after cellulose and is widely distributed in the biosphere, such as the crustaceans skin (crab, shrimp, and lobster), jellyfish, insect exoskeleton structural component, fungus cell-wall (22-40%), algae, nematodes, animals, plants, and microorganisms contribute to the chitin availability in soil (Yurnaliza et al. 2012; Asif et al. 2020). The source of chitin can also be obtained from shrimp processing waste which consists of head and shell (Benhabiles et al. 2012; Ghorbel-Bellaaj et al. 2012). Both wastes contain high chitin levels, which are thought a habitat for chitinase-producing bacteria (Benhabiles et al. 2012; Das et al. 2016; Ghorbel-Bellaaj et al. 2012).

Chitin can be degraded in two ways; the first is degradation by chitinolytic mechanisms which hydrolyze β -1,4-glycoside bonds and the second is chitin deacetylation, which can be hydrolyzed by chitosanase (Yurnaliza et al. 2012).

Exochitinase, endochitinase, chitosanase, and chitin deacetylase are chitinase enzymes (Yan and Fong 2015). Chitinase enzyme is produced by various organisms, including bacteria, yeasts, fungi, insects, plants,

vertebrates, etc. (Das et al. 2016). Chitinase enzyme is included in the hydrolase enzyme group that can degrade chitin directly into small molecular weight material produced by microorganisms (Yan and Fong 2015), both intracellularly (Li et al. 2016) and extracellularly (Kim et al. 2017).

Chitinase enzyme has excellent potential for various field applications (Das et al. 2016). The chitin hydrolysis products, namely chitooligosaccharide compounds (chitohexose and chitoheptose) are beneficial in health as anti-tumor agents (Soeka and Sulistiani 2012). Chitooligosaccharide compounds can also increase immunity and is very helpful for AIDS, cancer, heart, and blood disease treatments applied in food, medicine, and cosmetic products (Haliza 2016). In agriculture, chitinase produced by microorganisms acts as a biocontrol for plant diseases caused by fungi (Parnell et al. 2016; Berini et al. 2018). Chitinase causes fungus cell wall lysis that commonly contains chitin (Veliz et al. 2017; Asif et al. 2020).

Chitinase is also a very promising material in biotechnology as safe and environmentally friendly biopesticide that can degrade chitin, as a structural component of insect exoskeletons, nematodes, and fungal cell walls (Berini et al. 2018; Gupta et al. 2019; Le and Yang 2019; R. Singh et al. 2020). Chitinase also plays an environmental role as a bioconversion agent of chitin waste into single-cell proteins (Suryadi et al. 2016). *Brevibacillus reuszeri* and *Lysinibacillus fusiformis* are two groups of chitinolytic bacteria. Gurkok (2016) collected thirteen isolates of chitinolytic bacteria in the marine and terrestrial

environments from Western Anatolia Region in Turkey (Gürkök and Görmez 2016). Meanwhile, this study collected samples from shrimp processing factory waste which had different physical characteristics.

Prospective chitinase enzyme role in people's lives encourages scientists to explore chitinolytic microorganisms, including this study which was proposed for isolating the novel chitinolytic bacteria from shrimp processing factory waste that can be used as a source of chitinolytic bacteria with many benefits in various fields. Moreover, this study also expects to reduce the waste used, which is likely to have a negative impact on the environment.

MATERIALS AND METHODS

Isolation of chitinolytic bacteria

The samples, namely skin, head, and tail, were obtained from the shrimp processing factory waste in Makassar Industrial Area (KIMA), Indonesia. Samples were weighed 100 g and moved to an Erlenmeyer flask containing 400 mL lactose broth (LB) as a fermentation medium. The fermentation medium was kept closed and stored at 4°C (Jeyanthi Rebecca et al. 2013). This fermented liquid was used as chitinase enzyme-producing bacteria isolation process from shrimp processing waste.

Colloidal chitin preparation

Chitin from shrimp shells obtained from PT. Biotech Surindo, Cirebon, Indonesia was weighed 20 g and added 400 mL concentrated HCl. This mixture was then stirred for 2 hours and incubated in the refrigerator for 24 hours. The solution was filtered with glass wool, and the filtrate was added with 200 mL cold-distilled water and neutralized with 10 N NaOH (\pm 250 mL) at pH of 7. The solution was centrifuged at 8,000 rpm for 20 minutes at 4°C. The supernatant was removed, and the pellet was taken and added with distilled water. This mixture was then stirred to dissolve the remaining salt and re-centrifuged at a speed of 8,000 rpm for 20 minutes at 4°C. The colloidal chitin pellet produced was stored in the refrigerator (Widhyastuti 2007).

Isolation and selection of chitinolytic bacteria

Isolation and selection medium used a chitin agar (1% colloidal chitin, 0.1% peptone, 0.1% yeast extract, 0.1% KH_2PO_4 , 0.05% $\text{MgSO}_4 \cdot 7\text{H}_2\text{O}$, and 2% agar) in 100 mL distilled water. The solution was then homogenized with a magnetic stirrer and heated until being dissolved at a pH of 7. The solution was sterilized for 15 minutes at 121°C. Isolation was carried out using the spread-plate method. In the sample (fermented shrimp processing liquid waste), dilution was serially carried out in up to 10^{-6} . All dilutions were spread on chitin agar media and incubated at 37°C for 3 x 24 hours (Jeyanthi Rebecca et al. 2013; Saima et al. 2013).

The qualitative test results of chitinolytic isolate were characterized by a halo area (clear zone) around the colony. The isolates obtained were grown simultaneously by being

recycled on chitin media by using a straight loop. Selection was carried out by measuring the chitinolytic index of each isolate (Kaur et al. 2012; Veliz et al. 2017). The chitinolytic index is the ratio of clear zone diameter and bacterial colony diameter as presented in the following formula:
$$\text{CHITINOLITIC INDEX} = \frac{\text{HALO ZONE DIAMETER}}{\text{BACTERIAL COLONY DIAMETER}}$$
 (Kaur et al. 2012; Soeka and Sulistiani 2012)

All chitinolytic isolates with the highest chitinolytic index value were purified and re-cultured by inoculating the isolates onto the chitin agar and nutrient agar (NA) slant as stock for further treatment and stored in the refrigerator at 4°C (Soeka and Sulistiani 2012).

Colony macroscopic and microscopic observations of bacterial cells

The observation of bacterial isolates was carried out according to Bergey et al. (1984) using microscope (Olympus CX43). All isolates of chitinase enzyme-producing bacteria were observed based on the colony macroscopic characteristics (size, shape, color, elevation, edges, and surface) and cell microscopic characteristics (cell shape, Gram properties, and endospore availability).

Molecular identification of chitinolytic bacteria isolates

Molecular identification was only carried out on two bacterial isolates with the highest chitinolytic index. These bacterial isolates were determined using a 16S-rRNA sequence. The molecular identification and analysis of 16S-rRNA gene were carried out through (Saima et al. 2013).

DNA extraction

DNA extraction in prokaryotic organisms is carried out through sample preparation, cell lysis, DNA binding, washing, and elution. The DNA extraction steps were based on Geneaid Presto™ Mini gDNA Bacteria Kit.

Sample preparation

One of bacterial samples were inserted into a sterile 1.5 mL microcentrifuge tube containing 200 μL Gram (+) buffer added with lyszyme. This solution was homogenized by pipetting and incubated at 37°C for 30 minutes. The tube was vortexed after incubation and added 20 μL Proteinase K and 200 μL Gram (-) buffer, then vortexed and re-incubated at 60°C for 10 minutes. Every 3 minutes, the tube was changed its position in the incubator.

Cell lysis

The 200 μL GB Buffer (Geneaid) was added to the solution, then vortexed and re-incubated at 50°C for 10 minutes. The tube that contained this solution was changed its position every 3 minutes.

DNA binding

The 200 μL 96% ethanol was added to the solution, and the solution was vortexed for 10 seconds. The mixture was transferred into a GD column (spin column) in 2 mL collection tube and centrifuged at 13,100 rpm for 2 minutes. Collection tube under the spin column was then removed and replaced with new collection tube.

Washing

The 400 μ L W1 buffer (Geneaid) was added to the mixture solution and the mixture solution was centrifuged at 13,100 rpm for 30 seconds, then the supernatant in the collection tube was discarded. The 600 μ L wash buffer was added to the mixture solution and the mixture solution was re-centrifuged, then the supernatant in the collection tube was discarded and re-centrifuged for 3 minutes. The collection tube was discarded and replaced with sterile microcentrifuge tube at the bottom of the spin column.

Elution

The 100 μ L Elution buffer (Geneaid) was added into the mixture solution and stood for 3 minutes, then the mixture solution was centrifuged at the same speed for 1 minute. The DNA containing supernatant was stored in the microcentrifuge at 4°C as PCR template.

PCR (Polymerase Chain Reaction) amplification

PCR is an enzymatic synthesis process to multiply a specific nucleotide sequence in vitro (in the tube). The process included three stages; denaturation, annealing, and extension. This procedure was performed on isolated DNA samples. PCR mix was inserted into PCR tube. 2x KAPA2G Fast Ready Mix contained Taq DNA Polymerase, PCR buffer, $MgCl_2$, dNTP, and ddH₂O. The total volume of PCR Mix was 55 μ L for each sample, which was then entered into the PCR machine. Amplification was performed using a PCR (Geneaid DN1100). For PCR amplification, the initial stage of pre-denaturation was at 95°C for 3 minutes, then denaturation was at 95°C for 10 seconds, annealing was at 55°C for 10 seconds, extension was at 72°C for 15 seconds in 35 cycles followed by a final extension at 72°C for 1 minute, which was then held at 4°C.

Electrophoresis

2% agarose was prepared by dissolving 2 g agarose in 100 mL 10X Tris borate EDTA and boiling until the agarose dissolved. 1 μ L ethidium bromide (0.2 μ g/mL) was added and placed in a gel mold fitted with a comb. After the agarose became solid at about 30 minutes, the agarose was moved into an electrophoresis tank containing a 0.5% TBE solution. The amplified DNA sample at 5 μ L has then entered the tank to identify the PCR amplification product size. A 100 bp marker was inserted in the first well and followed by the amplified DNA sample. The electrodes were connected to the power supply and the electrodes were turned on for 40 minutes at 100 volts. The electrophoresis device was turned off then the gel from the device was taken. The gel was transferred to the UV-transilluminator (Geneaid DN1100) and the results were observed in a computer.

Sequencing

PCR samples contained 63F forward primer (5'-CAGGCCTAACACATGCAAGTC-3') and 1387R reverse primer (5'-GGGCGGTGTGTACAAGGC-3'). These samples were sent to PT. Genetics Science, Indonesia and

to 1st BASE INT sequencing, Malaysia for base-pair mapping the base pairs. After that, these nucleotides were notified online in BLAST (Basic Local Alignment Search Tool) program in NCBI (National Center for Biotechnology Information) database. Sequences were aligned using the Clustal W program. Furthermore, phylogenetic tree construction was carried out using the neighbor-joining method with the MEGA 6 program.

RESULTS AND DISCUSSION

Samples containing skin, head, and tail were taken from the shrimp shell processing factory waste in Makassar Industrial Area (KIMA), Indonesia. In this factory, skin, head, and tail of shrimp were thrown away. Chitinase in crustaceans has a function in the degradation of old cuticle (Taira et al. 2002).

Chitinolytic bacteria

The isolation and selection results of chitinolytic bacteria from shrimp processing waste obtained ten chitinolytic bacterial isolates as shown in Table 2.

This study found ten potential chitinolytic bacteria. Based on the data presented (Table 2), there was no correlation between Halo Zone Diameter, Bacterial Colony, and Chitinolytic Index. Furthermore, the highest chitinolytic index was found in KLA-2 (45) and KLA-4 (15). The KLA-2 and KLA-4 isolates were selected as potential chitinolytic bacteria. The chitinase activity of the two isolates can be seen in Figure 1.

Table 1. Composition of PCR mix

Reaction	(μ L)
Nuclease Free Water	20
KAPA2G Fast Ready Mix	25
63F (Forward primer)	2.5
1387R (Reverse primer)	2.5
DNA template	5
Total PCR mix	55

Table 2. Halo zone diameter, bacterial colony, and chitinolytic index from several chitinolytic bacteria

Isolate	Halo zone diameter (mm)	Bacterial colony diameter (mm)	Chitinolytic index
KLA-1	12	8	1.5
KLA-2	45	10	4.5
KLA-3	15	8	1.9
KLA-4	75	5	15
KLA-5	13	5	2.6
KLA-7	7	5	1.4
KLA-8	15	13	1.2
KLA-9	11	5	2.2
KLA-10	26	7	3.7
KLA-14	9	7	1.3

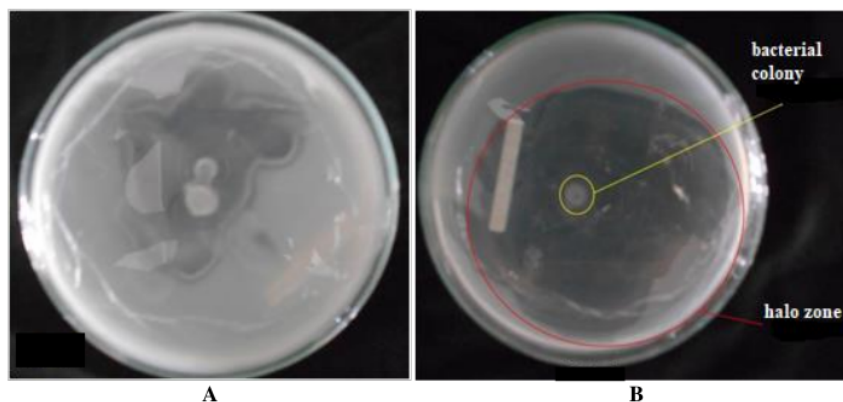


Figure 1. Chitinolytic activity of A. KLA-2 and B. KLA-4 isolates that formed clear zones around the bacterial colonies

The halo zone in Figure 1 represents the transparent color in the media due to the chitinase enzyme released into the media as a colorless metabolite, resulting in a clear zone formation around the bacterial colony (Noreen et al. 2018). Chitinase is an extracellular enzyme produced by chitinolytic bacteria which plays an essential role in hydrolyzing chitin (Asif et al. 2020). Extracellular enzymes are produced in cells and released into the growth medium (Z. Zhao et al. 2020).

From ten isolates, each colony with clear zone diameter was measured its colony diameter using a ruler on the third day of incubation. The measurement results obtained can be seen in Table 2. The clear zone size depends on the various bacteria's abilities to produce chitinase. The difference in chitin degradation rate can be indicated by the clear area's appearance around the colony on agar containing chitin (Yavari-Bafghi et al. 2019). These differences may be due to small differences in the encoded genes, as only the *chi18D* gene on *Cellvibrio japonicus* bacteria had fundamental roles in chitin degradation substrate (Monge et al. 2018).

This study used chitin agar as a selective medium to isolate and select chitinolytic bacteria, which contains colloidal chitin. Colloidal chitin is chitin dissolved in concentrated hydrochloric acid. Chitin agar is also a selective medium to obtain actinomycetes from water and soil (Hsu and Lockwood 1975), while colloidal chitin is chitin polymer degradation that contains chitin oligomer (Tran et al. 2019). Substrates that can be used for screening in chitin media to induce chitinolytic enzyme groups are exochitinase and endochitinase (Drewnowska et al. 2020). Screening method using chitin media was chosen due to quite practical, as capable of screening large amounts of chitinolytic isolates quickly, which can be presented either qualitatively or semi-quantitatively (Shamshina 2019).

Colony macroscopic and microscopic observations of bacterial cells

Macroscopic observations were directly carried out, while cell microscopic observations were carried out with Gram staining as a differential stain and endospore staining as a particular stain.

Table 3. Macroscopic observation of chitinolytic bacterial isolate

Isolate code	Size	Shape	Colony macroscopic			
			Color	Elevation	Edge	Surface
KLA-1	Moderate	Irregular	Milky white	Flat	Rhizoid	Smooth-shiny
KLA-2	Moderate	Irregular	Milky white	Flat	Rhizoid	Smooth-shiny
KLA-3	Moderate	Irregular	Milky white	Flat	Entire	Rough
KLA-4	Moderate	Circular	Milky white	Flat	Entire	Smooth-shiny
KLA-5	Moderate	Circular	Milky white	Flat	Entire	Smooth-shiny
KLA-7	Moderate	Irregular	Milky white	Flat	Entire	Smooth-shiny
KLA-8	Large	Filamentous	Milky white	Flat	Rhizoid	Rough
KLA-9	Moderate	Circular	Milky white	Flat	Entire	Smooth-shiny
KLA-10	Moderate	Circular	Milky white	Flat	Entire	Smooth-shiny
KLA-14	Moderate	Filamentous	Milky white	Flat	Rhizoid	Rough

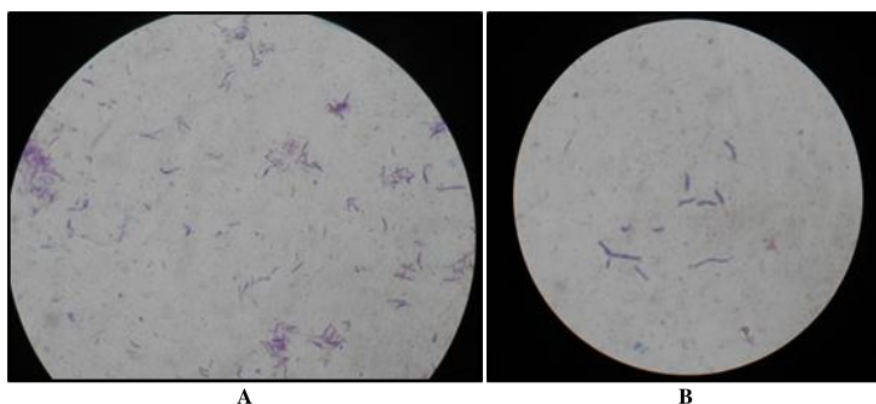
Table 4. Microscopic observation of chitinolytic bacterial isolates

Isolate code	Microscopic cell		
	Cell shape	Gram	Endospore
KLA-1	Bacillus	+	+
KLA-2	Bacillus	+	+
KLA-3	Coccus	-	-
KLA-4	Bacillus	+	+
KLA-5	Bacillus	+	+
KLA-7	Bacillus	+	+
KLA-8	Bacillus	-	-
KLA-9	Bacillus	+	+
KLA-10	Coccus	-	-
KLA-14	Coccus	-	-

Colonies that grew on agar plates were observed based on the size, color, transparency, edges, surface (elevation), and shape to obtain the bacterial colony macroscopic characteristics (Logan and Vos 2015).

The results obtained from the bacterial macroscopic observations of ten chitinolytic isolates can be seen in Table 3, while the results obtained from the microscopic observations of bacterial cells can be seen in Table 4. Colony macroscopic observations were performed in KLA-2 and KLA-4 isolates as potential isolates that have the highest chitinolytic index compared to other isolates. Microscopic observations of cells in KLA-2 and KLA-4 isolates had the same cell microscopic characteristics, namely, *bacillus* cell shape (rod), Gram-positive, and available *endospore* (Table 4, Figure 2).

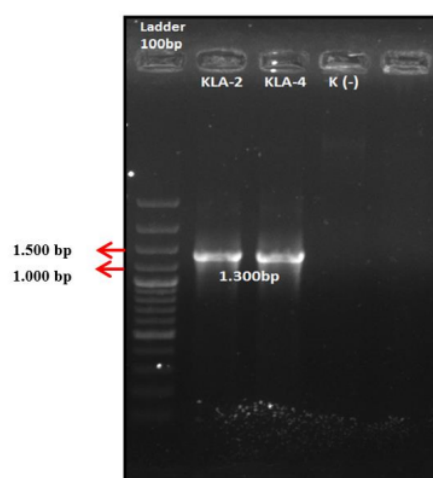
According to Sizar et al. Hans Christian Gram created Gram staining method in 1884. Gram-positive bacteria had purplish-blue color after staining with crystal violet-iodine, although being added with bleaching solution of acetone alcohol. Meanwhile, Gram-negative color had red color as the complex dissolved after being added with acetone alcohol and Safranin stain. Color difference indicates that the structural difference in bacterial cell walls (Budín et al. 2012).

**Figure 2.** Gram staining of two isolates (A. KLA 2, B. KLA 4) with the highest chitinolytic index (microscope magnification 400x)

Molecular identification of chitinase enzyme-producing bacteria

From the electrophoresis results of two samples, there were bands that were separated and parallel to the markers of around 1,300 bp (Figure 3). This indicates that the amplified gene fragment was \pm 1,300 bp in size, which means that the amplification process of two chitinolytic bacterial isolates was successful. The targets achieved were sufficient to identify these bacterial species.

The BLAST analysis results of two chitinolytic isolates in Figure 4 showed that the KLA-2 isolate species was *Lysinibacillus fusiformis* strain WH22 with a maximum score of 2124, query coverage of 94%, and the identity of 97%. Meanwhile, KLA-4 isolate species was the *Brevibacillus reuszeri* strain CMB-15 with a maximum score of 1958, query coverage of 89%, and identity of 95% (Figure 5).



30
Figure 3. Electrophoresis results from 16S-rRNA gene amplification product

Sequences producing significant alignments:

Select: All None Selected:0

Alignments						
Download GenBank Graphics Distance tree of results						
Description	Max score	Total score	Query cover	E value	Ident	Accession
<input type="checkbox"/> Lysinibacillus fusiformis strain WH22 16S ribosomal RNA gene, complete sequence	2124	2124	94%	0.0	97%	FJ418643.1
<input type="checkbox"/> Lysinibacillus sp. RAB1 16S ribosomal RNA gene, partial sequence	2122	2122	94%	0.0	97%	KR055710.1
<input type="checkbox"/> Bacillus sp. B-3-35 16S ribosomal RNA gene, partial sequence	2122	2122	94%	0.0	97%	KT583528.1
<input type="checkbox"/> Bacillus sp. B-3-30 16S ribosomal RNA gene, partial sequence	2122	2122	94%	0.0	97%	KT583523.1
<input type="checkbox"/> Lysinibacillus sp. A-3-10 16S ribosomal RNA gene, partial sequence	2122	2122	94%	0.0	97%	KT583488.1
<input type="checkbox"/> Lysinibacillus sp. C-2-31 16S ribosomal RNA gene, partial sequence	2122	2122	94%	0.0	97%	KT583477.1
<input type="checkbox"/> Lysinibacillus sp. C-2-16B 16S ribosomal RNA gene, partial sequence	2122	2122	94%	0.0	97%	KT583464.1
<input type="checkbox"/> Lysinibacillus sp. B-2-20 16S ribosomal RNA gene, partial sequence	2122	2122	94%	0.0	97%	KT583447.1
<input type="checkbox"/> Lysinibacillus sp. C-1-4 16S ribosomal RNA gene, partial sequence	2122	2122	94%	0.0	97%	KT583379.1
<input type="checkbox"/> Lysinibacillus sp. C-1-2 16S ribosomal RNA gene, partial sequence	2122	2122	94%	0.0	97%	KT583377.1
<input type="checkbox"/> Lysinibacillus sp. A-1-22 16S ribosomal RNA gene, partial sequence	2122	2122	94%	0.0	97%	KT583328.1
<input type="checkbox"/> Lysinibacillus fusiformis strain M12 16S ribosomal RNA gene, partial sequence	2122	2122	94%	0.0	97%	KT345669.1

Figure 4. BLAST analysis results for KLA-2 isolate

Sequences producing significant alignments:

Select: All None Selected:0

Alignments						
Download GenBank Graphics Distance tree of results						
Description	Max score	Total score	Query cover	E value	Ident	Accession
<input type="checkbox"/> Brevibacillus reuszeri strain CMB-15 16S ribosomal RNA gene, partial sequence	1958	1958	89%	0.0	95%	KJ186078.1
<input type="checkbox"/> Brevibacillus reuszeri strain NA-9 16S ribosomal RNA gene, partial sequence	1947	1947	89%	0.0	95%	KU254671.1
<input type="checkbox"/> Brevibacillus reuszeri strain NA-8 16S ribosomal RNA gene, partial sequence	1947	1947	89%	0.0	95%	KU254670.1
<input type="checkbox"/> Brevibacillus reuszeri partial 16S rRNA gene, strain L71	1947	1947	89%	0.0	95%	LN890067.1
<input type="checkbox"/> Paenibacillus sp. DB14824 16S ribosomal RNA gene, partial sequence	1947	1947	89%	0.0	95%	KP670284.1
<input type="checkbox"/> Uncultured bacterium clone PSJGSASTRA 16S ribosomal RNA gene, partial sequence	1947	1947	89%	0.0	95%	KR013217.1
<input type="checkbox"/> Brevibacillus reuszeri strain BCX-22 16S ribosomal RNA gene, partial sequence	1947	1947	89%	0.0	95%	KM378576.1

Figure 5. BLAST analysis results for KLA-4 isolate

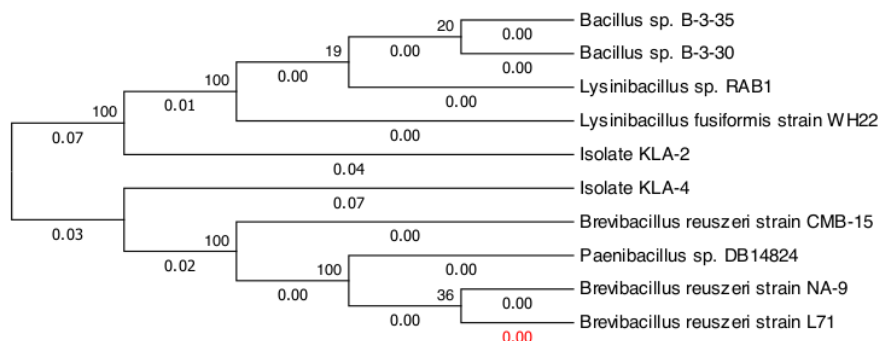


Figure 6. The phylogenetic trees made from both isolates and relative species based on the results of 16S-rRNA analysis

After KLA-2 and KLA-4 isolates were identified, phylogenetic tree analysis was carried out to precisely construct the relationship between organisms and estimate the differences between one ancestor to the offspring (Amit Roy 2014). 16S-rRNA gene is widely used for phylogenetic tree construction because the nucleotide base sequence among rRNA molecules can be compared precisely (Amit Roy 2014; Woese 1987) and the diversity can be easily identified. Also, 16S-rRNA gene in bacteria has high similarity level presented in all prokaryotes (Tremblay et al. 2015; Woese 1987).

Phylogenetic tree analysis was performed in two stages using the *Clustal W* program combined with the *MEGA 6* (*Molecular Evolutionary Genetics Analysis*) program to identify the kinship level among species (Horiike 2016). The first stage used the *Clustal W* program to align the second sequence of chitinolytic bacterial isolates with *GenBank* sequences, which had similar sequence to KLA-2 and KLA-4 isolate. The *MEGA 6* program then created its phylogenetic tree using the "Neighbor Joining" approach with 1000x bootstrap and p-distance method (Horiike 2016; Tamura et al. 2013).

Based on the phylogenetic analysis results in 16S-rRNA in Figure 6, the KLA-2 isolate was closely related to *L. fusiformis* strain WH22 with a genetic distance of 0.04 and a bootstrap value of 100. The greater the bootstrap value provided, the higher the bootstrap value produced. The reconstructed tree topology could also increase the trustworthiness level (Chang et al. 2019; Reddy et al. 2017). The KLA-4 isolate was closely related to *B. reuszeri* strain CMB-15 with a genetic distance of 0.07 and a bootstrap value of 100, compared to other types of bacteria in the *GenBank*.

Lysinibacillus fusiformis

Lysinibacillus fusiformis was initially known as *Bacillus fusiformis* before 2007, and then being transferred to *Lysinibacillus* genus due to different nucleus sequence from *Bacillus* gene based on the molecular analysis of 16S-rRNA gene sequence alignments. The meaning of "lysine" in *Lysinibacillus* genus indicates lysine, alanine, glutamic acid, and aspartic acid in peptidoglycan layer cell wall (Ahmed et al. 2007).

R. K. Singh et al. (2013) successfully isolated chitinolytic bacteria from the rhizosphere of peanut plants in India; after being identified morphologically, biochemically, and molecularly. The chitinolytic bacteria based on 16S-rDNA gene was identified as *L. fusiformis* B-CM18. The chitinase enzyme purification with gel filtration and ion exchange with *Sephadex G-100* obtained a molecular weight of 20 kDa, a purity of 7.1, a specific chitinase activity of 0.22 U/mg, and an optimum temperature 35° C. After finding the purified chitinase enzyme, an *in-vitro* antifungal activity test of chitinase crude extract against various plant pathogenic fungi. The highest inhibition zones were recorded against *Fusarium oxysporum* f. sp. *Ciceri* (4.64 mm), *Fusarium solani* (4.1 mm), *Fusarium oxysporum* f. sp. *lycopersici* (3.8 mm), and *Macrophomina phaseolina* (3.4 mm).

This study proves that *L. fusiformis* bacteria can

produce chitinase enzyme to degrade chitin and assimilate chitin as carbon and nitrogen sources (Asif et al. 2020). Apart from being chitinolytic bacteria, the *L. fusiformis* bacteria can also produce protease enzymes (Verma et al. 2016), indole acetic acid, salicylic acid, siderophores, which can dissolve phosphate, and can fixate nitrogen (Singh and Kumar 2013). These bacteria can also detoxify factory wastewater (He et al. 2011), transform isoeugenol into vanillin (L. Zhao et al. 2016), degrade quorum-sensing molecules of N-acyl-homoserine lactone (Yong et al. 2015), and chlorobenzene gas (Z. X. Li et al. 2014) and become a biocontrol agent (Wang et al. 2013).

Rishad et al. (2017) found that *Lysinibacillus fusiformis* MCB-15 was one of the chitinolytic bacteria from the extraordinary conditions of mangrove environment. Meanwhile, the chitinolytic bacteria source in this study was obtained from shrimp processing factory waste. The bacteria characteristics are greatly influenced by the environment (Cates 2012; More et al. 2014; Persat et al. 2015).

Brevibacillus reuszeri

Brevibacillus reuszeri was initially known as *Bacillus reuszeri* before 1996, before being transferred to *Brevibacillus* genus to different nucleotide sequence from *Bacillus* genus based on 16S-rRNA gene sequence molecular analysis alignments (Shida et al. 1996). *B. reuszeri* is a motile Gram-positive bacterium with flagella and ellipsoidal spores. These bacteria have the bacil shape at about 0.5-0.9 µm to 2.0-5.0 µm. The colony formed is flat, smooth, circular, and even. These bacteria are obligate aerobic, which can utilize oxygen to metabolize various sugars and other carbohydrates (Johnson and Dunlap 2019).

Prasanna et al. (2013) succeeded to isolate new strains of bacteria belonging to *Brevibacillus* genus from mangrove swamp-lands in India, which showed entomopathogenic and chitinolytic activities, namely, *B. laterosporus*.

Several studies have reported the ability of *B. reuszeri* bacteria, including capable of producing extracellular metalloprotease/thermolysin inhibitors (Kobayashi et al. 2004) to produce L-methionine-N-carbamoylase as potential biocatalyst for L-amino acid production (Nandanwar et al. 2013), phosphate dilution, plant growth-promoting rhizobacteria (PGPR) (Pradesh et al. 2019; Prasad et al. 2019; Yildirim et al. 2011), and antimicrobial bioactive compound production (Gholizadeh et al. 2013; Yang and Yousef 2018).

This study provides new evidence of *B. reuszeri* as chitinolytic bacteria. Although Gurkok (2016) has found *B. reuszeri* as chitinolytic bacteria in marine and terrestrial environments, the *B. reuszeri* identified in this study was obtained from the shrimp processing factory waste with different physical and characterization conditions based on the environmental difference. The nature of bacteria mainly depends on the environmental conditions (Cates 2012; More et al. 2014; Persat et al. 2015).

Ghorbel (2012) successfully isolated chitin from heads, thoraxes, and appendices of shrimp (*Metapeneus*

monoceros). Meanwhile, Benhabiles (2012) successfully isolated chitin from shrimp (*Parapenaeus longirostris*) shell waste in restaurants. In this study, chitin was also successfully isolated from the shrimp processing factory waste, containing head, tail, and skin. This factory used many kinds of shrimp waste as chitinolytic bacteria sources, which is beneficial to prevent the side effect of waste toward the environment, for sustainable environment.

REFERENCES

- A. Veliz E, Martínez-Hidalgo PM, Hirsch A. 2017. Chitinase-producing bacteria and their role in biocontrol. *AIMS Microbiol* 3 (3): 689-705. DOI: 10.3934/microbiol.2017.3.689
- Ahmed I, Yokota A, Yamazoe A, Fujiwara T. 2007. Proposal of *Lysinibacillus boronitolerae* gen. nov. sp. nov., and transfer of *Bacillus fusiformis* to *Lysinibacillus fusiformis* comb. nov. and *Bacillus sphaericus* to *Lysinibacillus sphaericus* comb. nov. *Intl J Syst Evol Microbiol* 57 (5): 1117-1125. DOI: 10.1099/ijs.0.63867-0.
- Amit Roy SR. 2014. Molecular markers in phylogenetic studies-a review. *J Phylogenet Evol Biol* 2: 2. DOI: 10.4172/2329-9002.1000131.
- Asif T, Javed U, Zafar SB, Ansari A, Qader SA, Aman A. 2020. Bioconversion of colloidal chitin using novel chitinase from *Glutamicibacter uratodoxydans* exhibiting anti-fungal potential by hydrolyzing chitin within fungal cell wall. *Waste Biomass Valor* 11 (8): 4129-4143. DOI: 10.1007/s12649-019-00746-2.
- Benhabiles MS, Salah R, Lounici H, Drouiche N, Goosen MFA, Mameri N. 2012. Antibacterial activity of chitin, chitosan and its oligomers prepared from shrimp shell waste. *Food Hydrocolloids* 29 (1): 48-56. DOI: 10.1016/j.foodhyd.2012.02.013.
- Bergey DH, Krieg NR, Holt JG. 1984. *Bergey's Manual of Systematic Bacteriology*. Williams & Wilkins, Baltimore, MD.
- Berini F, Katz C, Gruzdev N, Casarelli M, Tettamanti G, Marinelli F. 2018. Microbial and viral chitinases: Attractive bioprecursors for integrated pest management. *Biotechnol Adv* 36 (3): 818-838. DOI: 10.1016/j.biotechadv.2018.01.002.
- Budin, G, Chung HJ, Lee H, Weissleder R. 2012. A magnetic gram stain for bacterial detection. *Angewandte Chemie* 124 (31): 7872-7875. DOI: 10.1002/ange.201202982.
- Cates, M. E. (2012). Diffusive transport without detailed balance in motile bacteria: Does microbiology need statistical physics? *Rep Progr Phys* 75 (4): 042601. DOI: 10.1088/0034-4885/75/4/042601.
- Chang JM, Floden EW, Herrero J, Gascuel O, Di Tommaso P, Notredame C. 2019. Incorporating alignment uncertainty into Felsenstein's phylogenetic bootstrap to improve its reliability. *Bioinformatics* 2019. (Feb): 6. DOI: 10.1093/bioinformatics/btz082.
- Chernin LS, Winson MK, Thompson JM, Haran S, Bycroft BW, Chet I, Williams P, Stewart, GSAB. 1998. Chitinolytic activity in *Chromobacterium violaceum*: Substrate analysis and regulation by quorum sensing. *J Bacteriol* 180 (17): 4435-4441. DOI: 10.1128/jb.180.17.4435-4441.1998.
- Das S, Roy D, Sen R. 2016. Utilization of chitinaceous wastes for the production of chitinase. In: *Advances in Food and Nutrition Research*. 1st ed., Vol. 78. Elsevier Inc., New York. DOI: 10.1016/bs.afnr.2016.04.001.
- Diyauddin MOH, Ardyati TRI, Suharjono. 2020. Evaluation of enzymatic activity and identification of potent proteolytic and chitinolytic bacteria isolated from crab shell waste. *Biodiversitas* 21 (1): 211-218. DOI: 10.13057/biodiv/d210127.
- Drewnowska JM, Fiodor A, Barboza-Corona JE, Swiecicka I. 2020. Chitinolytic activity of phylogenetically diverse *Bacillus cereus* sensu lato from natural environments. *Syst Appl Microbiol* 43 (3): 126075. DOI: 10.1016/j.syapm.2020.126075.
- Elieh-Ali-Komi D, Hamblin MR. 2016. Chitin and chitosan: production and application of versatile biomedical nanomaterials. *Intl J Adv Res* 4 (3): 411-427.
- Gholizadeh SS, Baserisalehi M, Bahador N. 2013. Study on bioactive compounds produced by soil origin *Brevibacillus* spp. *Nature Environ Pollut Technol* 12 (2): 209-214.
- Ghorbel-Bellaaj O, Younes I, Maalej H, Hajji S, Nasri M. 2012. Chitin extraction from shrimp shell waste using *Bacillus bacteria*. *Intl J Biol Macromol* 51 (5): 1196-1201. DOI: 10.1016/j.ijbiomac.2012.08.034.
- Gohel V, Chaudhary T, Vyas P, Chhatpar HS. 2006. Statistical screenings of medium components for the production of chitinase by the marine isolate *Pantoea dispersa*. *Biochem Eng J* 28 (1): 50-56. DOI: 10.1016/j.bej.2005.09.002.
- Gupta MM, Chourasiya D, Sharma MP. 2019. Diversity of arbuscular mycorrhizal fungi in relation to sustainable plant production systems. In: Sathanarayana T, Das S, Johri B. (eds.). *Microbial Diversity in Ecosystem Sustainability and Biotechnological Applications*. Springer, Singapore. DOI: 10.1007/978-981-13-8487-5_7.
- Gürkök S, Görmez A. 2016. Isolation and characterization of novel chitinolytic bacteria. *AIP Conf Proc* 1726: 020017. DOI: 10.1063/1.4945843.
- Halder SK, Maity C, Jana A, Das A, Paul T, Das Mohapatra PK, Pati BR, Mondal KC. 2013. Proficient biodegradation of shrimp shell waste by *Aeromonas hydrophila* SBK1 for the concomitant production of antifungal chitinase and antioxidant chitosaccharides. *Intl Biodeterior Biodegrad* 79: 88-97. DOI: 10.1016/j.biode.2013.01.011.
- Haliza W. 2016. Karakteristik kintinase dari mikrobia. *Buletin Teknologi Pasca Panen* 8 (1): 1-14. [Indonesian]
- He M, Li X, Liu H, Miller SJ, Wang G, Rensing C. 2011. Characterization and genomic analysis of a highly chromate resistant and reducing bacterial strain *Lysinibacillus fusiformis* ZC1. *J Hazard Mater* 185 (2-3): 682-688. DOI: 10.1016/j.jhazmat.2010.09.072.
- Horiike T. 2016. An introduction to molecular phylogenetic analysis. *Rev Agric Sci* 4 (0): 36-45. DOI: 10.7831/ras.4.36.
- Hsu SC, Lockwood JL. 1975. Powdered chitin agar as a selective medium for enumeration of actinomycetes in water and soil. *Appl Microbiol* 29 (3): 422-426. DOI: 10.1128/am.29.3.422-426.1975.
- Jeyanthi Rebecca L, Susithra G, Sharmila S, Das MP. 2013. Isolation and screening of chitinase-producing *Serratia marcescens* from soil. *J Chem Pharmaceut Res* 5 (2): 192-195.
- Johnson ET, Dunlap CA. 2019. Phylogenomic analysis of the *Brevibacillus brevis* clade: a proposal for three new *Brevibacillus* species, *Brevibacillus fortis* sp. nov., *Brevibacillus porteri* sp. nov. and *Brevibacillus schisleri* sp. nov. *Antonie van Leeuwenhoek Intl J Gen Mol Microbiol* 112 (7): 991-999. DOI: 10.1007/s10482-019-01232-4.
- Junianto J, Wahyuntari B, Setyahadi S. 2013. Selection of methods for microbiological extraction of chitin from shrimp shells. *Microbiol Indonesia* 7 (2): 75-83. DOI: 10.5454/mi.7.2.5.
- Kaur K, Dattajirao V, Shrivastava V, Bhardwaj U. 2012. Isolation and characterization of chitosan-producing bacteria from beaches of Chennai, India. *Enzyme Res*. DOI: 10.1155/2012/421683.
- Kim YH, Park SK, Hur JY, Kim YC. 2017. Purification and characterization of a major extracellular chitinase from a biocontrol bacterium, *Paenibacillus elgii* HOA73. *Plant Pathol J* 33 (3): 318-328. DOI: 10.5423/PPJ.FT.01.2017.0022
- Kobayashi T, Nakagawa N, Imada C, Hamada-Sato N, Watanabe E. 2004. Occurrence of a metalloprotease (thermolysin) inhibitor among *Brevibacillus* species and purification of such inhibitor from *Brevibacillus reuszeri* IFO 15719T. *Fisheries Science* 70 (2): 299-305. DOI: 10.1111/j.1444-2906.2003.00804.x
- Lay B. 1994. *Analisis Mikroba di Laboratorium* (1st ed.). PT Raja Grafindo Persada. [Indonesian]
- Le B, Yang SH. 2019. Microbial chitinases: properties, current state and biotechnological applications. *World J Microbiol Biotechnol* 35 (9): 144. DOI: 10.1007/s11274-019-2721-y.
- Li S, Pearl DK, Doss H. 2000. Phylogenetic tree construction using Markov Chain Monte Carlo. *J Am Stat Assoc* 95 (450): 493-508. DOI: 10.1080/01621459.2000.10474227.
- Li Y, Lei X, Zhu H, Zhang H, Guan C, Chen Z, Zheng W, Fu L, Zheng T. 2016. Chitinase-producing bacteria with direct algicidal activity on marine diatoms. *Sci Rep* 6: 57-65. DOI: 10.1038/srep21984.
- Li ZX, Yang BR, Jin JX, Pu YC, Ding C. 2014. The operating performance of a biotrickling filter with *Lysinibacillus fusiformis* for the removal of high-loading gaseous chlorobenzene. *Biotechnol Lett* 36 (10): 1971-1979. DOI: 10.1007/s10529-014-1559-5.
- Logan NA, Vos P De. 2015. *Bacillus*. In *Bergey's Manual of Systematics of Archaea and Bacteria*. DOI: 10.1002/9781118960608.gbm00530
- Monge EC, Tuveng TR, Vaae-Kolstad G, Eijsink VGH, Gardner JG. 2018. Systems analysis of the glycoside hydrolase family 18 enzymes from *Cellvibrio japonicus* characterizes essential chitin degradation

- functions. *J Biol Chem* 293 (10): 3849-3859. DOI: 10.1074/jbc.RA117.000849.
- More TT, Yadav JSS, Yan S, Tyagi RD, Surampalli RY. 2014. Extracellular polymeric substances of bacteria and their potential environmental applications. *J Environ Manag* 144: 1-25. DOI: 10.1016/j.jenvman.2014.05.010
- Najafi MF, Deobagkar D, Deobagkar D. 2005. Purification and characterization of an extracellular α -amylase from *Bacillus subtilis* AX20. *Protein Expression Purif* 41 (2): 349-354. DOI: 10.1016/j.pep.2005.02.015.
- Nandanwar HS, Vohra RM, Hoondal GS. 2013. Trimeric L-N-carbamoylase from newly isolated *Brevibacillus reuszeri* HSN1: A potential biocatalyst for production of L- α -amino acids. *Biotechnol Appl Biochem* 60 (2): 219-230. DOI: 10.1002/bab.1066.
- Noreen N, Ramzan N, Perveen Z, Shahzad S, Noreen N, Al ET. 2018. Assessing the enzymatic activities of compost-associated mesophilic. Thermotolerant Thermophilic Bacteria *Fungi* 15: 815-825.
- Osamu S, Takagi H, Kadowaki KKK. 1996. Proposal for two new genera, *Brevibacillus* gen. nov. and *Aneurinibacillus* gen. nov. *Intl J Syst Bacteriol* 46 (4): 939-946.
- Pamell JJ, Berka R, Young HA, Sturino JM, Kang Y, Barnhart DM, Dileo MV. 2016. From the lab to the farm: An industrial perspective of plant beneficial microorganisms. *Front Plant Sci* 7: 1110. DOI: 10.3389/fpls.2016.01110.
- Patil RS, Ghormade V, Deshpande MV. 2000. Chitinolytic enzymes: An exploration. *Enzyme Microb Technol* 26 (7): 473-483. DOI: 10.1016/S0141-0229(00)00134-4.
- Persat A, Nadell CD, Kim MK, Ingremeau F, Siryaporn A, Drescher K, Wingreen NS, Bassler BL, Gitai Z, Stone HA. 2015. The mechanical world of bacteria. *Cell* 161 (5): 988-997. DOI: 10.1016/j.cell.2015.05.005.
- Pradesh H, Yadav N, Pradesh U, Kumar A, South RG, Pradesh U, Meena VS, Division CP. 2019. Plant growth-promoting rhizobacteria for agricultural sustainability. In: Kumar A, Singh Meena V (eds.). *Plant Growth Promoting Rhizobacteria for Agricultural Sustainability: From Theory to Practices*. Springer, Berlin. DOI: 10.1007/978-981-13-7553-8.
- Prasad M, Srinivasan R, Chaudhary M, Choudhary M, Jat LK. 2019. Plant Growth Promoting Rhizobacteria (PGPR) for sustainable agriculture. In: *PGPR Amelioration in Sustainable Agriculture*. Elsevier Inc., New York. DOI: 10.1016/b978-0-12-815879-1.00007-0.
- Prasanna L, Eijsink VGH, Meadow R, Gáseidnes S. 2013. A novel strain of *Brevibacillus laterosporus* produces chitinases that contribute to its biocontrol potential. *Appl Microbiol Biotechnol* 97 (4): 1601-1611. DOI: 10.1007/s00253-012-4019-y.
- Reddy S, Kimball RT, Pandey A, Hosner PA, Braun MJ, Hackett SJ, Han KL, Harshman J, Huddleston CJ, Kingston S, Marks BD, Miglia KJ, Moore WS, Sheldon FH, Witt CC, Yuri T, Braun EL. 2017. Why do phylogenomic data sets yield conflicting trees? Data type influences the avian tree of life more than taxon sampling. *Syst Biol* 66 (5): 857-879. DOI: 10.1093/sysbio/syx041.
- Rishad KS, Rebello S, Shabanamol PS, Jisha MS. 2017. Biocontrol potential of halotolerant bacterial chitinase from high yielding novel *Bacillus pumilus* MCB-7 autochthonous to mangrove ecosystem. *Pesticide Biochem Physiol* 137: 36-41. DOI: 10.1016/j.pestbp.2016.09.005.
- Saima, Kuddus M, Roohi, Ahmad IZ. 2013. Isolation of novel chitinolytic bacteria and production optimization of extracellular chitinase. *J Genet Eng Biotechnol* 11 (1): 39-46. DOI: 10.1016/j.jgeb.2013.03.001.
- Shahidi F, Arachchi JKV, Jeon YJ. 1999. Food applications of chitin and chitosan. *Trends Food Sci Technol* 10 (2): 37-51. DOI: 10.1016/S0924-2244(99)00017-5.
- Shamshina JL. 2019. Chitin in ionic liquids: Historical insights into the polymer's dissolution and isolation. *A review. Green Chem* 21 (15): 3974-3993. DOI: 10.1039/c9gc01830a.
- Singh R, Upadhyay SK, Singh M, Sharma I, Sharma P, Kamboj P, Saini A, Voraha R, Sharma AK, Upadhyay TK, Khan F. 2020. Chitin, chitinases and chitin derivatives in biopharmaceutical, agricultural and environmental perspective. *Biointerface Res Appl Chem* 11 (3): 9985-10005. DOI: 10.33263/BRIAC113.998510005.
- Singh RJ, Kumar DP, Singh P. 2013. Multifarious plant growth-promoting characteristics of chickpea rhizosphere-associated Bacilli help to suppress soil-borne pathogens. *Plant Growth Regulation*, Springer 73 (1): 91-101.
- Singh RK, Kumar DP, Solanki MK, Singh P, Srivastva AK, Kumar S, Kashyap PL, Saxena AK, Singhal PK, Arora DK. 2013. Optimization of media components for chitinase production by chickpea rhizosphere associated *Lysinibacillus fusiformis* B-CM18. *J Basic Microbiol* 53 (5): 451-460. DOI: 10.1002/jobm.201100590.
- Soeka YS, Sulistiani S. 2012. Seleksi, karakterisasi, dan identifikasi bakteri penghasil kitinase yang diisolasi dari Gunung Bromo, Jawa Timur. *Jurnal Natur Indonesia* 13 (2): 155. DOI: 10.31258/jnat.13.2.155-161. [Indonesian]
- Suryadi Y, Priyatno TP, Samudra IM, Susilowati DN, Lawati N, Kustaman E. 2016. Pemukiman parsial dan karakterisasi kitinase asal jamur entomopatogen *Beauveria bassiana* isolat BB200109. *Jurnal AgroBiogen* 9 (2): 77. DOI: 10.21082/jbio.v9n2.2013.p77-84.
- Taira T, Ohnuma T, Yamagami T, Aso Y, Ishiguro M, Ishihara M. 2002. Antifungal activity of rye (secale cereale) seed chitinases: The different binding manner of class i and class ii chitinases to the fungal cell walls. *Biosci Biotechnol Biochem* 66 (5): 970-977. DOI: 10.1271/bbb.66.970.
- Tamura K, Stecher G, Peterson D, Filipski A, Kumar S. 2013. MEGA6: Molecular evolutionary genetics analysis version 6.0. *Mol Biol Evol* 30 (12): 2725-2729. DOI: 10.1093/molbev/mst197.
- Terayama H, Kuzuhara H. 1993. Large-scale preparation of n, n, -diacetylchitinobiose by enzymic degradation of chitin and its chemical modifications. *J Carbohydr Chem* 12 (1): 81-93. DOI: 10.1080/07328309308018542.
- Tran TN, Doan CT, Nguyen VB, Nguyen AD, Wang SL. 2019. The isolation of chitinase from *Streptomyces thermocarboxydus* and its application in the preparation of chitin oligomers. *Res Chem Intermed* 45 (2): 727-742. DOI: 10.1007/s11164-018-3639-y.
- Tremblay J, Singh K, Fern A, Kirton ES, He S, Woyke T, Lee J, Chen F, Dangi JL, Tringe SG. 2015. Primer and platform effects on 16S rRNA tag sequencing. *Front Microbiol* 6: 771. DOI: 10.3389/fmicb.2015.00771.
- Verma P, Yadav AN, Khannam KS, Kumar S, Saxena AK, Suman A. 2016. Molecular diversity and multifarious plant growth promoting attributes of *Bacilli* associated with wheat (*Triticum aestivum* L.) rhizosphere from six diverse agro-ecological zones of India. *J Basic Microbiol* 56 (1): 44-58. DOI: 10.1002/jobm.201500459.
- Wang K, Yan P sheng, Ding Q, long WQ, xi Wang Z, bo Peng J. 2013. Diversity of culturable root-associated/endophytic bacteria and their chitinolytic and aflatoxin inhibition activity of peanut plant in China. *World J Microbiol Biotechnol* 29 (1): 1-10. DOI: 10.1007/s11274-012-1135-x.
- Widhyastuti N. 2007. Produksi kitinase ekstraseluler *Aspergillus rugulosus* 501 secara optimal pada media cair. *Berita Biologi* 8 (6): 547-553. [Indonesian]
- Woese CR. 1987. Bacterial evolution. *Microbiol Rev* 51 (2): 221-271. DOI: 10.1128/mmbr.51.2.221-271.1987.
- Yan Q, Fong SS. 2015. Bacterial chitinase: Nature and perspectives for sustainable bioproduction. *Bioreour Bioprocess* 31: 2015. DOI: 10.1186/s40643-015-0057-5.
- Yang X, Yousef AE. 2018. Antimicrobial peptides produced by *Brevibacillus* spp.: structure, classification and bioactivity: a mini-review. *World J Microbiol Biotechnol* 34 (4): 57. DOI: 10.1007/s11274-018-2437-4.
- Yavari-Bafghi M, Babavalian H, Amoozegar MA. 2019. Isolation, screening and identification of haloarchaea with chitinolytic activity from hypersaline lakes of Iran. *Arch Biol Sci* 71 (1): 71-81. DOI: 10.2298/ABS180525049Y.
- Yildirim E, Karlidag H, Turan M, Dursun A, Goktepe F. 2011. Promotion of broccoli by plant growth-promoting rhizobacteria. *Hort Sci* 46 (6): 932-936.
- Yong D, Ee R, Lim YL, Chang CY, Yin WF, Chan KG. 2015. Insights on quorum-quenching properties of *Lysinibacillus fusiformis* strain RB21, a Malaysian municipal solid-waste landfill soil isolate, via complete genome sequence analysis. *Genome Announcements* 3 (3): 2014-2015. DOI: 10.1128/genomeA.00409-15.
- Yurnaliza Y, Margino S, Sembiring L. 2012. Kemampuan kitinase *Streptomyces* RK15 sebagai Antijamur terhadap patogen *Fusarium oxysporum*. *Jurnal Natur Indonesia* 14 (1): 42. DOI: 10.31258/jnat.14.1.42-46.
- Zhao L, Bao G, Geng B, Song J, Li Y. 2016. Draft genome sequence of *Lysinibacillus fusiformis* strain SW-B9, a novel strain for biotransformation of isoeugenol to vanillin. *Genome Announcements* 3 (2): 9-10. DOI: 10.1128/genomeA.00289-15.

Zhao Z, Baltar F, Herndl GJ. 2020. Linking extracellular enzymes to phylogeny indicates a predominantly particle-associated lifestyle of

deep-sea prokaryotes. *Sci Adv* 6 (16): 1-11. DOI: 10.1126/sciadv.aaz4354.

Novel chitinolytic bacteria from the shrimp shell processing waste

ORIGINALITY REPORT

13%

SIMILARITY INDEX

9%

INTERNET SOURCES

7%

PUBLICATIONS

4%

STUDENT PAPERS

PRIMARY SOURCES

1	Submitted to Universitas Brawijaya Student Paper	2%
2	e-journal.uajy.ac.id Internet Source	1%
3	www.dwf.dk Internet Source	1%
4	Singh, Rajesh Kumar, D. Praveen Kumar, Manoj Kumar Solanki, Pratiksha Singh, Alok K. Srivastva, Sudheer Kumar, Prem L. Kashyap, Anil K. Saxena, Pradeep K. Singhal, and Dilip K. Arora. "Optimization of media components for chitinase production by chickpea rhizosphere associated <i>Lysinibacillus fusiformis</i> B-CM18", <i>Journal of Basic Microbiology</i> , 2012. Publication	1%
5	hdl.handle.net Internet Source	1%

6	Submitted to Poltekkes Kemenkes Banjarmasin Student Paper	1 %
7	www.freepatentsonline.com Internet Source	1 %
8	Submitted to Boston University Student Paper	<1 %
9	Karl-Heinz Schleifer. "Phylum XIII. Firmicutes Gibbons and Murray 1978, 5 (Firmacutes [sic] Gibbons and Murray 1978, 5)", Systematic Bacteriology, 2009 Publication	<1 %
10	dokumen.pub Internet Source	<1 %
11	mafiadoc.com Internet Source	<1 %
12	ppsub.ub.ac.id Internet Source	<1 %
13	F Feliatra, M Mardalisa, J Setiadi, I Lukistyowaty, A Y Hutasoit. "Potential of Secondary Metabolite from Marine Heterotrophic Bacteria against Pathogenic Bacteria in Aquaculture", Journal of Physics: Conference Series, 2020 Publication	<1 %

14

Sonia Sharma, Shiv Kumar, Anjali Khajuria, Puja Ohri, Rajinder Kaur, Ramandeep Kaur. "Biocontrol potential of chitinases produced by newly isolated Chitinophaga sp. S167", World Journal of Microbiology and Biotechnology, 2020

Publication

<1 %

15

peerj.com
Internet Source

<1 %

16

Submitted to State Islamic University of Alauddin Makassar

Student Paper

<1 %

17

Rivia Kumala Dewi, Suranto ., Ari Susilowati, Aris Tri Wahyudi. "Molecular Identification of 16S rDNA and Polyketide Synthase Genes of Antagonist Bacteria against Xanthomonas oryzae Pathovar oryzae from Rice Phyllosphere", Asian Journal of Plant Pathology, 2015

Publication

<1 %

18

"Phytobiomes: Current Insights and Future Vistas", Springer Science and Business Media LLC, 2020

Publication

<1 %

19

"Recent Advancement in White Biotechnology Through Fungi", Springer Science and Business Media LLC, 2019

Publication

<1 %

20 Microbial-mediated Induced Systemic Resistance in Plants, 2016. <1 %
Publication

21 www.biorxiv.org <1 %
Internet Source

22 "Bacilli and Agrobiotechnology: Phytostimulation and Biocontrol", Springer Science and Business Media LLC, 2019 <1 %
Publication

23 "Microorganisms for Green Revolution", Springer Science and Business Media LLC, 2017 <1 %
Publication

24 "Recent Trends in Mycological Research", Springer Science and Business Media LLC, 2021 <1 %
Publication

25 Maria Swiontek Brzezinska, Agnieszka Kalwasińska, Joanna Świątczak, Klaudia Żero, Urszula Jankiewicz. "Exploring the properties of chitinolytic Bacillus isolates for the pathogens biological control", Microbial Pathogenesis, 2020 <1 %
Publication

26 Plant Microbe Symbiosis Fundamentals and Advances, 2013. <1 %
Publication

27	discovery.ucl.ac.uk Internet Source	<1 %
28	jurnalmahasiswa.unesa.ac.id Internet Source	<1 %
29	"Microbiome in Plant Health and Disease", Springer Science and Business Media LLC, 2019 Publication	<1 %
30	M Nurilmala, K H Nurhayati, N A Butet, A O Sudrajat. "Molecular marker based on 16S rRNA gene for seahorse (Hippocampus spp.) from Bintan Island-Indonesia", IOP Conference Series: Earth and Environmental Science, 2019 Publication	<1 %
31	Sushil K. Sharma, Rakhi Dhyani, Ees Ahmad, Pankaj K. Maurya et al. "Characterization and low-cost preservation of Chromobacterium violaceum strain TRFM-24 isolated from Tripura state, India", Journal of Genetic Engineering and Biotechnology, 2021 Publication	<1 %
32	"Encyclopedia of Marine Biotechnology", Wiley, 2020 Publication	<1 %
33	"Microbial Enzymes: Roles and Applications in Industries", Springer Science and Business	<1 %

Media LLC, 2020

Publication

Exclude quotes On

Exclude matches Off

Exclude bibliography On