

View Email



From: "Alim Syariati" <alim.syariati@uin-alauddin.ac.id>

To: "Muslimin Kara" <muslimin.kara@uin.alauddin.ac.id>

Subject: [Minds] Submission Acknowledgement

Muslimin Kara:

Thank you for submitting the manuscript, "Consumer Choice Behavior in Teseng Practices: Qualitative Analysis of Theory of Planned Behavior" to Jurnal Minds: Manajemen Ide dan Inspirasi. With the online journal management system that we are using, you will be able to track its progress through the editorial process by logging in to the journal web site:

Submission URL: <https://journal.uin-alauddin.ac.id/index.php/minds/authorDashboard/submission/36014>

Username: muslimin123

If you have any questions, please contact me. Thank you for considering this journal as a venue for your work.

Alim Syariati

View Email



From: "Alim Syariati" <alim.syariati@uin-alauddin.ac.id>

To: "Muslimin Kara" <muslimin.kara@uin.alauddin.ac.id>

Subject: [Minds] Submission Acknowledgement

Muslimin Kara:

Thank you for submitting the manuscript, "Consumer Choice Behavior in Teseng Practices: Qualitative Analysis of Theory of Planned Behavior" to Jurnal Minds: Manajemen Ide dan Inspirasi. With the online journal management system that we are using, you will be able to track its progress through the editorial process by logging in to the journal web site:

Submission URL: <https://journal.uin-alauddin.ac.id/index.php/minds/authorDashboard/submission/36014>

Username: muslimin123

If you have any questions, please contact me. Thank you for considering this journal as a venue for your work.

Alim Syariati

View Email



From: "Alim Syariati" <alim.syariati@uin-alauddin.ac.id>

To: "Muslimin Kara" <muslimin.kara@uin.alauddin.ac.id>

Subject: [Minds] Editor Decision

Dear Muslimin Kara (Author),

Our independent reviewers has finished their assesment regarding your submission to Jurnal Minds: Manajemen Ide dan Inspirasi, "Consumer Choice Behavior in Teseng Practices: Qualitative Analysis of Theory of Planned Behavior".

We conveyed their decision regarding your article to **request Revisions**.

Please find the comments in the attached drafts or under this email body. You have to carefully read each comment and revise your manuscript accordingly. Please **highlight in yellow** the changes you are making, and answers what you have done regarding their recommendations. The answers must be presented in a point by point basis, and placed in your return email or inside the manuscript body. You can also maximize the uses of the track and changes function in word.

Finally, we expect you to return the revised manuscript within a month after this decision email. Should you wish to withdraw your paper, you can email us to indicate your decision.

*Carpe Diem,*  
Alim Syariati

**View Email**

From: "Alim Syariati" <alim.syariati@uin-alauddin.ac.id>

To: "Muslimin Kara" <muslimin.kara@uin.alauddin.ac.id>

Subject: [Minds] Editor Decision

Dear Muslimin Kara (Author),

Our independent reviewers has finished their assesment regarding your submission to Jurnal Minds: Manajemen Ide dan Inspirasi, "Consumer Choice Behavior in Teseng Practices: Qualitative Analysis of Theory of Planned Behavior".

We conveyed their decision regarding your article to **request Revisions**.

Please find the comments in the attached drafts or under this email body. You have to carefully read each comment and revise your manuscript accordingly. Please **highlight in yellow** the changes you are making, and answers what you have done regarding their recommendations. The answers must be presented in a point by point basis, and placed in your return email or inside the manuscript body. You can also maximize the uses of the track and changes function in word.

Finally, we expect you to return the revised manuscript within a month after this decision email. Should you wish to withdraw your paper, you can email us to indicate your decision.

*Carpe Diem,*

Alim Syariati

## Consumer Choice Behavior in Teseng Practices: Qualitative Analysis of Theory of Planned Behavior

**ABSTRACT:** The increase in research on local economic practices is not accompanied by theoretical analysis. This study aims to explore people's behavior in choosing Teseng's local economic practices by analyzing the theory of planned behavior. Therefore, the implication of this research is that it is an instrument for measuring local economic practices from the perspective of the theory of planned behavior. The methodology used was phenomenology with data sources from the Batukaropa village community, Bulukumba Regency. The results of the study show that Attitude Toward Behavior is indicated by an attitude of helping and strengthening kinship. Meanwhile, subjective norms consist of the perception that teseng are part of the social culture of society, and the practice of teseng reflects social status. Perceived behavior control based on the practice of testing is more flexible and effective than the procedures for applying venture capital in Islamic banking.

**Keywords:** theory of planned behavior, Consumer Choice Behavior, Teseng, Mudharabah, & Musyarakah

*Submitted: 15 March 2021; Revised: 22 March, 5 & 28 April 2021; Accepted: 04 May 2021*

**Commented [L1]:** This is an unknown word to global reader. Please make a concise abstract, not exceeding 150 word counts. Please make sure that the authors explain what is teseng (1-2 sentences) that it needs other academicians' attention.

**Commented [L2]:** Where is this nation?

**Commented [L3]:** Testing or teseng?

\*Corresponding Author : type your email here

DOI:

ISSN-E: 2597-6990

ISSN-P: 2442-4951

<http://journal.uin-alauddin.ac.id/index.php/minds>

Publisher: Program Studi Manajemen, Universitas Islam Negeri Alauddin Makassar

## INTRODUCTION

Humans are social beings who cannot live alone and who need other people's roles in their lives. However, the existence of a common interest and idea can be a factor in making a difference in society (Hosein et al., 2016). For example, Indonesia, as a country with different levels of society, builds a way of life that is diverse and unique according to the uniqueness of each region, and then becomes a differentiator from other groups. The diversity of life is a reflection of differences in behavior and lifestyle based on habits, environmental factors, and other beliefs in a particular area (Qardhawi, 2019). As a general society, pluralism includes differences in culture, religion, race, language, and ethnicity, which ensures that a region or ethnic group has its own knowledge within its community and locality has been preserved from generation to generation (Rohani et al., 2020).

Local wisdom refers to the values or behavior of local people related to the environment in which they live well. Local wisdom is in the form of a value, then transformed into legal norms or principles, and even into ethics and beliefs (Huda, 2020). The values prevailing in society determine the sustainability of local wisdom, which is reflected in certain segments of society (Rogerson, 2018). Building local wisdom by exploring the potential of the region as a tool driver in solving regional development problems is one of the best solutions (Mijačić, 2013). The economic practices of local wisdom values are numerous in Indonesia because the power of local wisdom is passed down from generation to generation so that the formation of these values is the basis for the strength of practices that still exist today. It is also called learning by experience (Sofyan et al., 2021).

In regions, for example, there are still various economic activities carried out by the community, where these activities have the same benefits or models as socio-economic activities in rural areas. However, what makes it different is that they still believe in the economic system as a form of tradition and need to be preserved (Bennett, 2021). One is in South Sulawesi, and the Bugis community uses various *Syirkah* methods that retain the local wisdom of the Bugis community. There are various community activities carried out in simple forms of cooperation, such as profit sharing in animal husbandry and agriculture, and various other activities that use the concept of sharing with the motive of mutual help and cooperation based on kinship ties. This means that this system is still typical of people's behavior in general, in economic conditions. Collaboration with such a scheme is called *Mudharabah* in the context of Islamic economics (Khoirunurrofik, 2018).

The practice of cooperation using the *mudharabah* scheme is still being practiced by the Bugis community, namely profit sharing, known as the "Teseng" demonstration. Teseng's profit-sharing principle was implemented by applying a simpler system according to the model that was previously attempted in the Bugis community. In this partnership, the community will work together with one party who owns capital and another party who manages it (Rasyid et al., 2018). The purpose of this system is to transfer the right to manage property, such as livestock (cows), rice fields, and gardens. This

Commented [L4]: italicized

Commented [L5]: Please make sure that this place to be explain its origin. It is from which place/state?

Commented [L6]: italicized

Commented [L7]: The English is not okay. Please proofread.

approach is usually carried out using the principles of trust, cooperation, and harmony, and there is no clear contractual bond between the two parties involved.

In general, the Bugis community tends to use *teteng* cooperation rather than *mudharabah* financing products in financial institutions because they consider this to be more applicable and have been used for generations and have social motives among fellow Bugis people. Therefore, it can be said that the Bugis community is based because they are accustomed to carrying out the practice of *teeng*, and there are social motives that will have a positive effect on the behavior and intention felt in choosing *teeng* cooperation.

Theory of Planned Behavior (TPB) is used to reveal the behavioral phenomena and attitudes of each individual (Seni & Ratnadi, 2017). In the TPB, the intention or purpose of an action is influenced by three factors: individual perceptions of behavior and evaluation of these results, beliefs about normative expectations that are legalized, and belief in the existence of something that drives or hinders what is happening (Hidayat, 2010). Similarly, Raygor (2016) expanded the understanding that TPB can directly influence consumer behavior and determine consumer choices in choosing an economic action that they want to take. Several studies have found that if TPB is applied to study attention and behavior in various domains, consumer behavior in determining cooperation schemes and the type of product desired (Ajzen, 2015; Amanu, 2018; bashir et al., 2019; Raygor, 2016)

Therefore, in this case, it is hoped that the TPB will be able to reveal the theory of planned behavior by showing that the behavior of the Bugis community is influenced not only by a person's behavioral intention to cooperate with *Teseng* but also by his decisions regarding personal choices. To the best of our knowledge, this research topic has never been developed before by examining the phenomenon of cultural-based economic practices such as *teseng* by uncovering behavioral motives in depth. In addition, this study prioritizes the researcher's sense of reality for actual practice by interpreting facts based on the TPB concept. It was then developed as an instrument for further research.

## THEORETICAL REVIEW

### Local Economic Practices and their relation to *Teseng*

The local economy is designed to bring together cultural practices or local wisdom related to the economic activities of the people in the area (Smirnova, 2013). The continuity between industry (economy), culture and human development shows how industry contributes to sustainable development on a cultural basis to increase social cohesion (Bevilacqua et al., 2019; Blanquart & Koning, 2017). Local wisdom is formed through various communication processes between humans and their environment to meet their needs. For example, the local/local area development strategy includes activities that protect nature and the environment or prevent and avoid those

Tjokro (Author Family name here)

who try to damage it. Therefore, this study is important in developing areas of local wisdom (Mitchell & Willett, 2006). The process of discovering local wisdom is very important for the potential of nature and the environment, as well as for the influence of local ideas, attitudes, and attitudes towards nature and a more friendly way of life. Therefore, local wisdom (*urf sahiih*), although local in nature, contains a universal moral value. The villagers already know that living, independent, not having too many needs, tolerant, wise in debt, does not damage the sustainability of generations and the environment. Local geniuses such as this are in accordance with religious teaching. Local wisdom provides opportunities for community creativity, which in turn spawns creative industries (Mitchell & Willett, 2006).

Various studies have examined local economic practices in musyarakah and mudharabah. Sofyan et al. (2021) show that this research is the first to develop financial products based on local practices in Indonesia, including the practice of cultivating rice fields with the Teseng scheme in the Bugis community. This study links culture to Islamic financial institutions in several ways. First, the preaching of Islamic economics using a psycho-Sufi approach is embodied in the values of monotheism, humanity, humility, local wisdom, and self-transformation for people without Islamic finance literature (Sofyan et al., 2021). In line with research conducted by Anita, (2019) that ma'teseng has distinctive values and norms that have been regulated from the way the harvest is distributed, agreements, then simplicity, there are sanctions.

Apart from the topic of local wisdom values, two other topics examine profit-sharing systems. Namely, research conducted by Wulandari, (2020) high discusses aspects of the study of Islamic law. Furthermore, in terms of motives, research conducted Zainabriani et al., (2015) suggests the main factors of breeders (*Pa' Tesseng*) carrying out this system are as follows: lack of capital, wanting to expand on their own, economic needs, family requests, additional income. Other factors include the owner of capital (*Ma' Teseng*) wanting to help, wanting to make a living, lack of land, and too many livestock. Meanwhile, Marzuki (2019) analyzed the cow profit-sharing system in terms of economic motives. This is in line with what was found by Agustriani (2018) that the benefits that farmers obtain from the Teseng concept are the creation of parallel jobs and meeting family economic needs, such as agricultural needs and food needs such as rice, as well as those related to daily life and creating trust/work between owners and farmers. Research conducted by Rasyid et al., (2018) found that the results of this research illustrate that the determining factors in the business ability of breeders are age, self-confidence, courage in facing risks and level of education while factors External factors that also influence the entrepreneurial ability of these breeders are natural resources, families, breeder groups and prevailing meat prices. Cattle business opportunities, government politics and financial assistance) (Rasyid et al. 2018). This research is also supported by Wahyuni (2013), who analyzed five indicators: transparency, proportionality in income distribution, consistency, equality in bargaining power, and termination compensation. The concept of profit-sharing



adjustment complements the positive values of local customs with Islamic customs.

#### Theory of Planned Behavior (TPB) on Consumer Choice Behavior

The Theory of Planned Behavior, hereinafter referred to as TPB, discusses the nature of these specific behavioral factors within the framework of the theory of planned behavior, this theory is designed to predict, predict and explain human behavior in certain contexts. This theory is also a development of the Theory of Reasoned Behavior. According to the TPB, the combined function of intention and perceived behavioral control is behavioral performance. For this to occur, certain conditions must be met. The first is the measurement of goals and perceived behavioral control in accordance with the actions to be predicted (Ajzen, 1991). Under such conditions, intentional and perceptual controls must be evaluated in terms of the preferred behavior and the specific context in which the behavior will be performed (Ajzen, 1991).

The second condition for accurate prediction is that perceived intention and control must be experienced without pressure and must be stable with one's own condition in the interval between the behavior and the observed behavior. Intervening with someone in an observation can cause a change in perceived intention or control behavior, so this effect makes the initial measurement of these variables not provide accurate movement predictions (Putraa, 2020). The third prerequisite condition validates the predictive results related to perceived behavioral control. As previously explained, the understanding of behavioral control must be improved in relation to the perception of behavioral control (Prayidyaningrum & Djamaludin, 2016).

Situations and behaviors depend on the relative importance of intention and perceived behavioral control in predicting the expected behavior (Cruz et al., 2015). The addition of perceived control should serve as necessary behavioral control. Both perceived behavioral intention and control can contribute significantly to behavior prediction, and only one of the two predictors may be needed (Natawibawa et al., 2018). Ajzen (1991) concluded that the TPB is one of the most important and popular ideas in human studies. According to this belief, human behavior is guided by three types of thoughts: attitudes toward behavior, subjective norms, and perceptions of behavioral control.

Consumer Behavior is a study that discusses how consumers behave and the processes they use to choose, use (consume), and stop using products and services. In addition, this study discusses consumers' emotional and mental responses (Bashir et al., 2019). Consumer behavior does not simply stand alone. He is a combination of ideas from several disciplines, including psychology, economics, biology, and chemistry (Ajzen 2015). Looking at consumer behavior, it is easier to see predictions of purchases or decisions to be made (Raygor, 2016). The consumer decision-making process or consumer decision is a process in which consumers are aware of their choices and are able to identify their own needs, gather information about how to meet their needs, evaluate available

Tjokro (Author Family name here)

alternative choices, make purchasing decisions, and even evaluate their purchases (Ajzen, 2015).

## METHODOLOGY

This study uses a phenomenological approach based on the needs and desires of the community to respond to the complexity of existing problems (Arikunto, 2002). This research was conducted in a remote Batukaropa village in Bulukumba. The suitability of funds and accuracy of research implementation are the most important factors in managing the time of activities. This research provides an overview of the main Teseng practice carried out by the Bugis Bulukumba Community. In addition, this research will reveal the motives behind people's behavior in choosing this practice through the Theory of Planned Behavior. Some researchers, such as Chang et al., used TPB with qualitative analysis. (2020) and Mak et al. (2019), Mattia et al. (2019), and residents et al. (2019). TPB is a suitable method for this study because certain practices are behavior-driven and require interviews to explore the possibilities and reasons behind them (Chang et al., 2020).

The data obtained are divided into two types: primary data, which are the main data. These data were obtained through direct interviews with the perpetrators of the testeng: farmers, ranchers, and land managers. The second type of data is in the form of secondary data, namely, supporting the primary data. These data were obtained by searching for additional references related to the research problems. The authors used a data triangulation model in the data analysis process. Triangulation is a methodological method developed by researchers to explore and apply competent information production methods (Nasution 2003). The triangular approach can be likened to a method for checking the usefulness of information by comparing the results of interviews with research subjects and then presenting the data. Finally, it can be concluded that information is valid or in accordance with existing facts (Sugiyono, 2009).

## RESULTS AND DISCUSSION

Local wisdom is knowledge that explicitly arises from a long time ago and develops together with the community and its environment in a local system that is experienced together (Syukur, 2015). The evolutionary process that takes a long time and is embedded in a social system can make local wisdom a potential source of energy from the community's collective knowledge system to live together dynamically and peacefully (Putri, 2020). The Bugis community in carrying out their economic activities is also inseparable from existing cultural values that are affiliated with social life. This is in line with Granovetter (1985) which states that economic action is always socially situated and embedded in personal-social networks that occur between actors (Khambule, 2020). Local wisdom is not only a guideline for one's behavior, but is also capable of making a civilized society's life dynamic (Nijaki & Worrel, 2012).

Commented [L8]: State?

Commented [L9]: State?

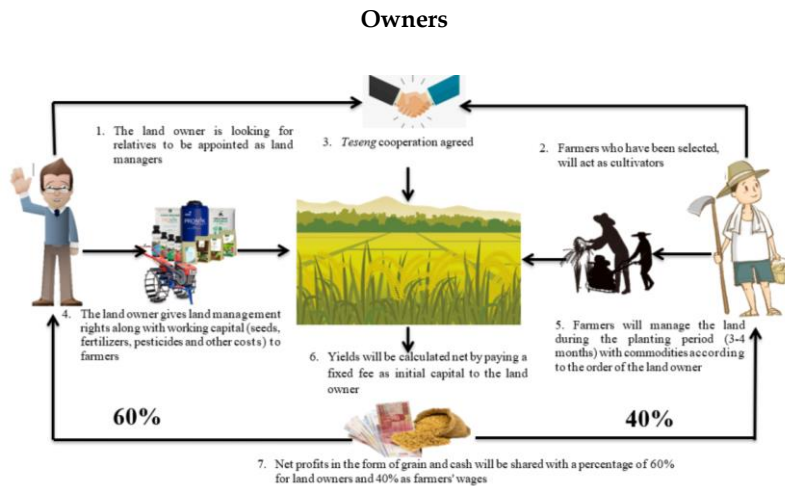
Commented [L10]: Why are they suitable for your particular study?

One form of local wisdom that is carried out in the form of economic activity by the Bugis community is *teseng* or profit sharing. *Matteseng* or *teseng* is defined by the local community as a system of partnership between the local community and various objects such as rice fields, gardens and livestock which involves two parties, namely the financier or object owner and the manager. This partnership system is carried out in the form of traditional transactions without any legality but only based on an agreement between the parties involved. *Teseng* is a tradition that is carried out from generation to generation in accordance with applicable customary law.

The mutual agreement system of both parties is only verbal without written approval. To implement a profit-sharing system, livestock owners and managers must make an agreement in advance if the agreement will be determined only when maintenance begins to be carried out by the manager without any written information regarding the time limit and livestock maintenance costs or a decision after the contract (Sulham, 2018). In this collaboration, there is a very high risk of legal incompetence as a result of exaggerated and *gharar* actions that can trap one of the parties in *trespassing*.

The geographical condition of Batukaropa Village which has fertile soil and is surrounded by a large river called *Balantieng* and the people's livelihoods which are dominated by agricultural, plantation and livestock activities have made these three sectors the main commodities in the implementation of *teseng*. The several conditions for the establishment *Teseng* are as follows: 1) Parties Concerned, and 2) Objects of *Teseng*. So that the types of *teseng* applied by the people of Batukaropa Village are quite diverse. The first is *Teseng Galung*.model *Galung teseng* carried out with several types, one of which is working capital which is borne by the land owner. In this *teseng* pattern, the land owner does not only hand over his paddy fields, but also provides additional capital either in cash or in the form of agricultural materials and tools. The agricultural materials in question are seeds, fertilizers and pesticides. While agricultural equipment is in the form of direct goods or cost components consisting of tractor costs, planting costs and harvest costs. So that in this pattern, sharecroppers only act as managers without having to spend any additional capital (Figure 1.1).

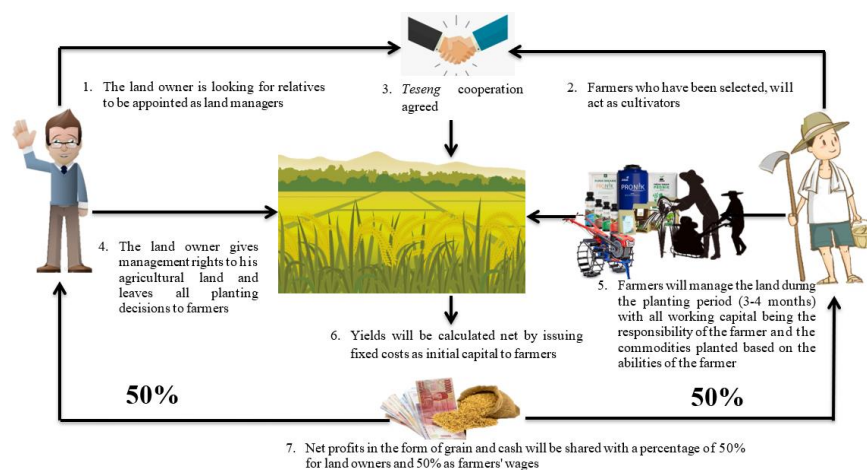
Figure 1.1 The *Teseng* Pattern with Working Capital Charged to Land



Source: Processed by the author

The second type is working capital borne by farmers. In the husk of this second collaboration, the focus is more on the role of sharecroppers who are not only in charge of maintenance and management aspects but also act as initial investors. The cost of seeds, fertilizers and pesticides will be provided by the farmers themselves from the beginning of the planting season to the harvest. Based on this, it is clear that landowners will only give their land to be managed so that the processes and work systems are fully handed over to sharecroppers. Profit sharing is carried out in the same way as the landowner's capital scheme, but the difference is that the costs incurred during the management period will be given to sharecroppers. So that the remaining or net profits will be divided by a percentage of 50% for sharecroppers and 50% for landowners. Even though the costs are borne by the farmer, the percentage given is quite small and is shared equally (Figure 1.2). This is explained by the assumption that farmers who manage and incur their own costs have basically made initial calculations regarding the amount of fertilizers and pesticides and other costs so that they will only be given benefits for their management services.

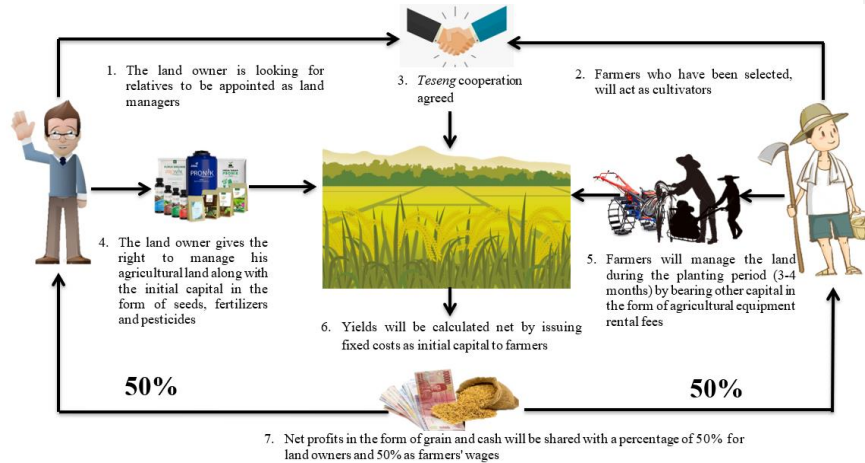
Figure 1.2 The *Teseng* Pattern with Working Capital Charged by the Farmers



Source: Processed by the author (2022)

The third type is shared capital. If the two parties do not agree to charge fixed costs in the agricultural process to one party only. So what farmers will do is divide these costs based on their expenditure components so that both can contribute fairly. In general, the cost component consists of costs for fertilizers, pesticides and seeds which will be handed over to the land owner. While the cost of using tools and machines from planting to harvest is borne by the sharecroppers. This is done because the cost of using the tools is usually not fixed and depends on the farmer's agreement with the people to be employed. While the cost of fertilizers, seeds and pesticides will be relatively the same and cost a little more so as not to burden the sharecroppers, the land owner will provide this. The yields obtained will be calculated by issuing working capital in advance according to the nominal issued by both parties. When net results are obtained, the percentage of profit sharing will be agreed at 50% for both parties. The farmers felt that this division was fair because both of them issued additional capital which had been agreed at the beginning of the agreement.

Figure 1.3 The *Teseng* Pattern with Shared Capital



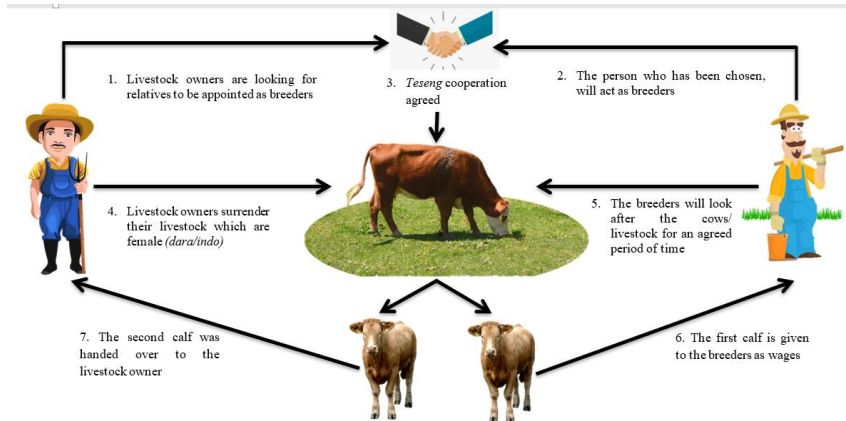
Source: Processed by the Author (2022)

The practice of *teseng* in Batukaropa Village does not only focus on land or immovable property as the main object. However, this practice is also applied to profit sharing for raising livestock or the local community knows it as *olo' kolo*. Cattle are the most common livestock kept by the people of Batukaropa Village, although not as a large livestock group, but the dominant head of the family owns a cow as their personal livestock. *Teseng olo'kolo* is divided into two types of agreement depending on the sex of the cattle. As for the distribution, one of them is *Teseng Cow Heifer/Indo'*. The owner and the breeder, before sharing the profits, have an agreement consisting of the rights and obligations of both the breeder and the owner. The rights and obligations of the owner are to provide capital to breeders, sell cattle raised by breeders if there is an agreement between the two parties, knowing if there are results and if there are obstacles such as how long there will be results and when the cattle are sick. The rights and obligations of breeders are to maintain livestock properly, provide animal feed, notify the owner if there are results and if something unexpected happens, such as the death of a calf or when it is sick.

Female cattle or in Bugis language known as *dara* are generally favored by people who want to do *teseng*. This is because according to breeders, if adult cows are bred it doesn't take long to breed. In this pattern, the cows given by the owner to the farmer to be raised are adult cows or cows that have given birth. The distribution system is that in the first year, the calf is given to the owner, the second calf in the second year is given to the farmer and so on.

An illustration of this pattern can be seen as follows:

Figure 1.4 The Teseng Pattern of *dara/indo*

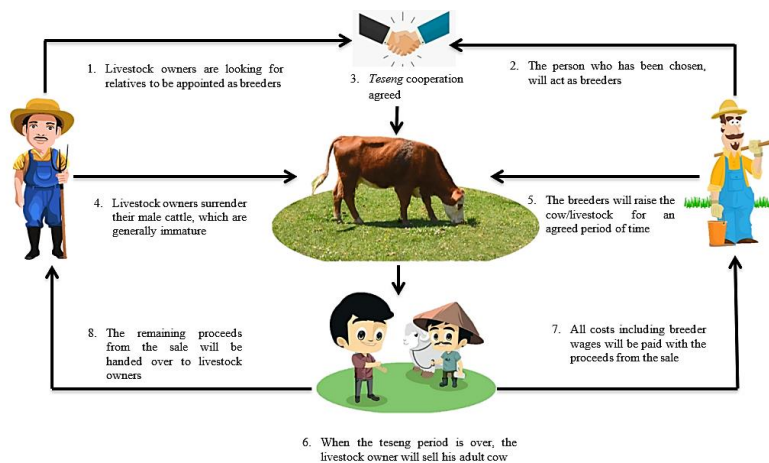


Source: Processed by the author (2022)

This is in accordance with the statement Ardiansyah (2013), which says that the facts in the field are that the owners before implementing a profit sharing system usually look for breeders who want to raise their cows later or there are people who offer themselves to be breeders to other people. considered to have capital. The owner gives the cow to the farmer and entrusts that the given cow will be raised on the basic assumption that the mother cow when reared is faster to get offspring and of course when it is associated with Pattern I it will provide benefits for the breeder.

The second type is *Teseng Sapi Lai*. In this pattern, the main object in the profit-sharing process is a bull or in Bugis language it is known as *Lai*. The livestock owner will give his bull which will then be cared for including in terms of health checks and feeding livestock to entrusted relatives. The agreement will last within the agreed timeframe. In general, the community will set a period of 1-2 years until the cows being cared for are old enough and meet the ideal weight for sale. When the cows have been traded, then the manager or breeder will calculate in detail the maintenance costs including wages which will then be notified to the livestock owner. As an obligation, the owner must provide these costs in its entirety and provide wages that are in accordance with the workload given. The excess funds from the sale will be fully owned by livestock owners.

Figure 1.5 The *Teseng* Pattern of *Lai* Cow/Livestock



Source: Author Processed (2022)

In practice, this cooperation is very vulnerable to new problems resulting from unclear contracts. Problems like this are very common to be found or are called *force major* at the time of production sharing agreements if from the initial agreement there is no binding contract or written agreement (Anita et al., 2019). For example, if a case occurs where the cow that is the object of the cooperation dies. This condition will cause losses to both the keeper and the owner of the cow itself. Likewise, if the object is land, both paddy fields and gardens, the determination of the party to bear the loss in the event of a crop failure is not clear. So often the manager bears this unilaterally and the land owner still gets a share of the crop regardless of the actual conditions (Wulandari, 2020).

In addition, the problems that often arise are also usually inversely proportional to the previous situation where the owner of the capital bears the loss. For example, if there is a livestock manager who neglects to provide sufficient feed compared to the cattle owned by the manager, the owner of the capital suffers a loss. Or there are other losses incurred, for example the cows being kept are not able to reproduce. A profit-sharing system with a model like this without clear terms of profit will only cause new problems. Especially in



cooperation like this using cows, or fields as the object of cooperation. the manager divides the proportion of profit in the livestock sale agreement, the manager's hard work raising livestock and costs previously provided by the capitalist in the form of livestock, an unequal distribution of what percentage must be paid from the labor expended by cattle breeders (Anita et al., 2019).

This profit-sharing problem has basically been encountered, especially in economic practices that only follow the habits of the local community and consider this problem as commonplace as it happens in Bugis society. Seeing the existing problems, it is clear that the motive for this collaboration, which was initially focused on the principle of mutual assistance and trust, has taken it out of the actual context. Instead, this practice only harms related parties and is prone to conflict (Kesuma, 2018).

In Islam, *mudharabah* or cooperation has clear terms and conditions. *Mudharabah* is defined as a contract between two people, the first party provides capital and the second party provides work or for business and the profits obtained can be shared with the portion of the profit sharing agreed at the time of the contract (Muhamad, 2010). In the *mudharabah* contract there is a separation of duties and responsibilities. Namely, one of the parties responsible for running a business to generate profits (*mudharib*). Then another party is responsible for providing all the capital to run the business (*shahibul maal*). Therefore, before the collaboration is carried out, both parties have agreed on the distribution of profits and losses that are likely to occur during the collaboration process (Maharani, 2008). Muslim jurists agree on the validity of *mudharabah* if it is reviewed in terms of the teachings and objectives of Sharia. Where profits are calculated in the *mudharabah* scheme, in the form of profit sharing between the two parties that have been approved (Maharani, 2019). If there are many profits, then the distribution is large and vice versa (Muhammad, 2014)

Seeing this, this *mudharabah* contract is actually able to answer the problems arising from the cooperation of *teseng*. It's just that in terms, *mudharabah* is still very foreign to the ears of the community, especially in rural areas. Public education about Islamic economics only stops at understanding free banks and some of their contracts. Likewise with the use of *mudharabah* contracts which are believed by the public to be a system that only operates in the banking world and cannot be applied in the everyday world.

**Motives for implementing *Teseng* based on the Theory of Planned Behavior**

Tjokro (Author Family name here)

In carrying out teseng, of course, the background is various motives that arise from the perpetrators themselves. What's more, this teseng practice is a social collaboration that connects several parties and has an impact not only on oneself but also on the social sphere. Through *theory of planned behavior*, it will be possible to identify the factors that are the reason for the people of Batukaropa Village in the process of determining attitudes to carry out this teteng cooperation. The Batukaropa Village community in carrying out the teseng practice is of course motivated by behavior that is considered to have a positive influence both for themselves and others. This attitude is supported by the belief that teseng is a means of helping each other in order to strengthen relations between communities. In addition, economic pressure is also the basis for community attitudes in deciding to practice teteng. This is because by doing the test, they will get additional income or a more decent job so that they can improve their standard of living.

**Table. 1 Attitude Indicator Interview Analysis Results**

Commented [L11]: ok

Statement of Informant	Open Coding	Axial Coding
"Usually there are people who only have cows or only bulls. From there, they can work together so that only one person keeps the cows. Let it multiply quickly and each party can benefit."	Justice in profits	.Someone's feelings for Teseng, and Teseng's activities.
"It's a pity, there are many brothers and neighbors who have no income. So I personally hand over part of my rice fields to them to manage, later we will share the results equally."	Help Attitude	
"We all prioritize family, it's not other people who are helped, right? Fellow family too, especially if we already trust each other. God willing, there will be no problems."	Family affection/ Strengthening Kinship Relationships	

"Because Ji's family is too, so the hope is that we can also strengthen our relationship because we often talk about the condition of the rice fields or cows that are being managed."

"The most frequent incidents are because there are people who don't have permanent jobs and don't have assets such as rice fields or livestock. So they cooperate with other people in this way." Giving Up

Social

Negative  
Representations

"If you can swear at mappa' teseng rice fields or cows, it means that you can curse around three times and you are increasingly being looked at by other people"

Status

Positive  
Representation

"There is no legal government if there are people who want to testeng. They just need to know that they trust each other, then there are respected parents who are witnesses. Even so some people also "

Trust

"The most important thing in the *testeng* is trust. Because we work together without a law, we don't use a legally valid agreement. But just based on mutual trust so that later if there is something it can be discussed as a family"

---

Source: Results of interviews with Teseng perpetrators in Batukaropa Village, Bulukumba Regency.

Tjokro (Author Family name here)

In the *theory of planned behavior*, when an individual decides to act, the main thing that will be the background is the *attitude* that arises from the individual's own internal (Aprillia, & Ramadan, 2019). The results of the interviews show the attitudes felt in carrying *testeng*, namely: justice in profits, *ta'awun attitude*, affection for family, resignation, social status, and gaining trust.

**Table. 2 Results of Interview Analysis Subjective Norm Indicator**

Statement of Informant	Open Coding	Axial Coding
<p>"We have been <i>testeng</i> practicing a long time. Because indeed parents often have <i>ma'teseng</i>."</p> <p>"If we want to <i>ma'teseng</i> with these people, we first put our own family or neighbors who we know well. Because we want to help them so that they have additional work. There are many who don't have rice fields but don't have a job, so we offer to <i>dry</i> them so they can earn. Basically, please help."</p>	Family Support	Internal Factors
<p>"This test has been a long time mi. Mi has been passed down from the ancient people. So now we just have to just keep doing it because this is the goal to help each other"</p>	Community Social Culture	External Factors
<p>"Because there are some people who don't have a job and going to the city looking for work is difficult because they don't have a higher education and they don't have any experience either. So if we ask <i>Teteng</i> to cooperate, Alhamdulillah, we can help them too."</p>	Economic Conditions of the Family	
<p>Both really need it, because I can no longer take care of cows because I teach at elementary school every day so I don't have time to feed them, and the cages are also not available</p>	Community Needs	
<p>"Because no one is taking care of the rice fields, we can't help but cooperate with this <i>teseng</i>. I am the one who gave the capital and trust to take care of the</p>		

fields, and Mr. Rustam is the one who works until he can harvest and the results are divided according to the agreement"

Source: Results of interviews with Teseng perpetrators in Batukaropa Village, Bulukumba District

Subjective norms which are norms that are adhered to by individuals with reference to the norms of the surrounding environment (Maichum et al., 2016). Subjective norms can be viewed as social pressures that influence individuals in carrying out an action (Natawibawa et al., 2018). Various studies have found that the social environment can pressure and force individuals to take action (Maichum et al., 2016; Prayidyaningrum & Djamaludin, 2016; Ramadhani et al., 2020; Tommasetti et al., 2018). The people in Batukaropa Village are familiar with sharing agricultural land, pawning, renting and buying and selling land. The agricultural profit-sharing system has been entrenched among the people for generations from one generation to the next as a custom. This motive is also supported by Wahyuni's research (2013) which states that the practice of profit-sharing or informal transactions among the community is created not only to be legal but also economic in nature. The relationship between the owner of the *teseng* and the cultivator is built up by spiritual, social, cultural aspects and the most important thing is the relationship that is established as a result of economic calculations.

**Table. 3 Results of Interview Analysis Behavioral Control Indicators**

Statement of Informants	Open Coding	Axial Coding
"I am still <i>kodong</i> people's rice fields, because if we don't <i>have</i> rice fields, the only way we work is <i>owned</i> by people. Thank God it's enough for basic needs"	Easy to do	ability <i>Mateseng</i>
"We are really grateful, because this is what allows us to earn money while studying also to work on the rice fields or <i>of olo'kolo</i> without having to have capital first"	Without needing capital	
"We chose <i>teeng</i> because it is faster, when we need it, if there are people	Easy access	Full control

Tjokro (Author Family name here)

who want to have sex, we can get the capital at that time and we don't need any more documents because we already know each other, so the collaboration can start right away"

**Commented [L12]:** please elaborate. How having sex needs money?

"Because we are afraid for sharia banks it's the same, the interest is high so the installments are quite big so we'll just use this first. I'm afraid it will only make it more burdensome." It doesn't have a burden

"The profit sharing also depends on the person concerned. But usually we use a calculation if the profit is greater for those who have rice fields because apart from the land, they also provide the capital. So the farmers only help take care of things, for example those who plow the fields or provide rice fertilizer so the profit for them is in the form of a salary "

"It's enough for us to just use teteng, because this is very good and useful for the community. Because banking is still new, we don't want to try it as long as we can do what we usually practice." Benefits

"Banks are also complicated, we have to take care of this, especially documents such as land certificates, if not all of our rice fields have certificates, so they cannot be used as collateral" flexible

If you *do* there are many ways. It depends on the initial agreement whether the capital will come from the owner of the land or the one who will manage it later

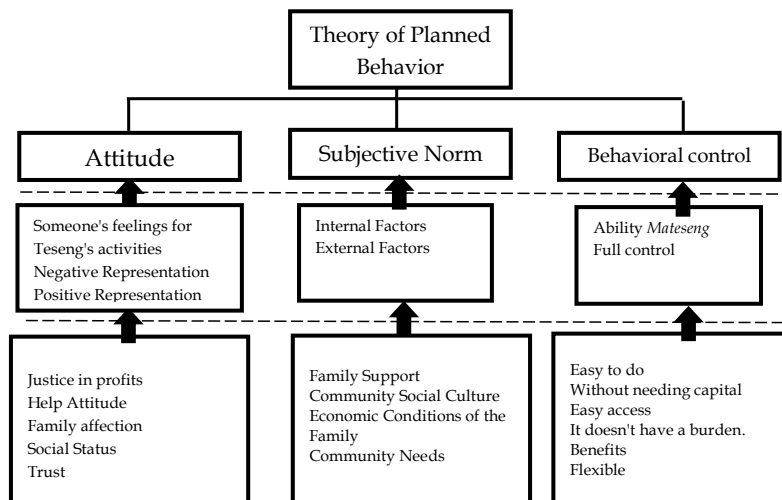
---

Source: Results of interviews with Teseng perpetrators in Batukaropa Village, Bulukumba District.

In the *theory of planned behavior*, it is stated that everyone is in full control when there are no obstacles to demonstrating behavior. or *overview of perceived behavior control* refers to the extent to which a person feels that the performance or lack of behavior is controlled (Ajzen, 2015). The people of Batukaropa Village tend to choose the reason that they are unable to own their own livestock or land while they also do not have other jobs to fulfill their own lives. Because of this, people who do not have the resources then decide to do the *teseng* as an alternative to getting a job regardless of educational history and previous experience. They will also receive capital and assistance and supervision from *pa'bere teseng* which will provide them with sufficient income to meet their personal and family needs.

Another reason why people prefer to practice *teeng* instead of using *mudharabah* products in Islamic banking is because of the paradigm of society that views that applying for business capital loans in banking always goes through a difficult and lengthy process. rural areas are unable to fulfill this because they do not have complete documents or administration. Such as land certificates as collateral or population administration, which not all people have. Meanwhile, the banking sector needs to adjust the submission to the existing operational standards. If this is not met then the application will not be accepted.

Figure 1.6 Mapping Coding Interview Results



Tjokro (Author Family name here)

Source: Results of interviews with Teseng practitioners in Batukaropa Village, Bulukumba District.

### Research Implications

Based on previous research, there were 33 studies that discussed local practices in various regions of Indonesia. For this reason, the implication of this research is to create a measurement instrument on people's behavior in choosing local practices over non-banking services (Table 4). This measurement certainly has a major impact on financial institutions, which requires a measurement to increase the market share of the financial industry sector. Besides that, this is also useful for marketing teams who need knowledge about people's behavior about people's needs for financial products.

**Table. 4 Instrument for measuring local economic practices from the perspective of the theory of planned behavior**

Statement	Indicator
<b>Attitude</b>	
The practice of <i>teseng</i> can provide fair benefits	Justice in profits
The practice of <i>teseng</i> helps and helps the family economy	Help Attitude
Doing <i>teseng</i> practice with family will strengthen friendship and communication.	Family affection/Strengthens Kinship Relations
Doing <i>teseng</i> practice is a family economic solution	Resigned
<i>Pa'bere teseng will be seen as good by others</i>	Social status
<b>Subjective Norms</b>	
The practice of <i>teseng</i> is a belief that must be maintained.	Trust
Parents and family support the practice of <i>teseng</i>	Family support
<i>The practice of teseng is a culture in society as a form of mutual help</i>	Community Social Culture
Doing <i>teseng</i> practice to increase family income	Family Economic Conditions
For the community, the cooperation of <i>teseng</i> is due to the mutual need between <i>pa'bere teseng</i> and <i>pa'teseng</i> .	Community Needs
<b>Behavior Control</b>	
<i>Teseng</i> practice is easy to do	Easy to do
The practice of <i>teseng</i> can be done without the need for capital	Without the need for capital
The practice of <i>teseng</i> is carried out without complicated document requirements	Easy access
The practice of <i>teseng</i> does not provide burdens such as installments and loan interest	Have no burden
Profit sharing is clearer than deposits	Profit



The practice of teseng is beneficial in the Benefit  
community  
The practice of teseng is very flexible to do fleksibel  
because there is no need to guarantee land  
certificates

Source: processed data (2022)

### Conclusion

Based on the results of the research conducted, the authors can draw several conclusions related to the teseng work system and the motives of the people of Batukaropa Village to do this. The practice of *teseng* is generally carried out with two main objects, namely rice fields and livestock. In the perspective *Theory of Planned Behavior*, the people of Batukaropa Village choose to practice *teseng* based on several reasons, namely: 1) *Attitude Toward Behavior* which is indicated due to economic pressure and an attitude of mutual help and to strengthen kinship; 2) *Subjective Norm* which consists of the perception that *teseng* is a social culture of society and the practice of *teseng* reflects social status; 3) as well as *Overview Perceived behavior control* based on the practice of *teseng* is more flexible and effective compared to the procedures for applying for business capital in Islamic banking. The implications of this research are hoped that there will be further research using quantitative research methods to measure the magnitude of the influence of each factor so that it is more actual.

### REFERENCES

- Agustriani. (2018). Pelaksanaan Sistem Bagi Hasil Ternak Sapi Di Desa Pattallikang Kecamatan Manuju Kabupaten Gowa. *Minithesis, Universitas Muhammadiyah Makassar*, 1–96.
- Ajzen, I. (1991). The theory of planned behavior. *Organizational Behavior and Human Decision Processes*, 50(2), 179–211. [https://doi.org/10.1016/0749-5978\(91\)90020-T](https://doi.org/10.1016/0749-5978(91)90020-T)
- Ajzen, I. (2015). *Consumer attitudes and behavior: the theory of planned behavior applied to food consumption decisions*. January 2015, 121–138. <https://doi.org/10.13128/REA-18003>
- Amanu, A. A. (2018). *Analisis Perilaku Pembelian Kosmetik Halal Berdasarkan Theory of Planned Behaviour (Studi Kasus Mahasiswa Perguruan Tinggi Agama Islam Swasta Yogyakarta) The Analysis on the Cosmetic Purchasing Behaviour Based on the Theory Planned of Behaviour*. 1–90.
- Anita, A., Herman, H., & Hasni, H. (2019). *Ma'teseng (Studi Kearifan Lokal Masyarakat di Desa Massenreng Pulu Kecamatan Lamuru Kabupaten Bone)*.
- Ariella Ramadhani Putri. (2020). Analysis of Profit Sharing, Income And Value Added of Milkfish Cultivation in Pinrang Regency. *Thesis, Hasanuddin University*.
- Arikunto, S. (2002). *Prosedur Penelitian Suatu pendekatan Praktik*. Rineka Cipta.
- bashir, S., Khwaja, M. G., Turi, J. A., & Toheed, H. (2019). Extension of planned

**Commented [L13]:** Replace with Further study (see the author guidelines).

Tjokro (Author Family name here)

- behavioral theory to consumer behaviors in green hotel. *Heliyon*, 5(12), e02974. <https://doi.org/10.1016/j.heliyon.2019.e02974>
- Bennett, D. L. (2021). Local economic freedom and creative destruction in America. *Small Business Economics*, 56(1), 333–353. <https://doi.org/10.1007/s11187-019-00222-0>
- Bevilacqua, C., Cantafio, G. U., Parisi, L., & Pronesti, G. (2019). Investigating local economic trends for shaping supportive tools to manage economic development: San Diego as a case study. *Smart Innovation, Systems and Technologies*, 100, 191–200. [https://doi.org/10.1007/978-3-319-92099-3\\_23](https://doi.org/10.1007/978-3-319-92099-3_23)
- Blanquart, C., & Koning, M. (2017). The local economic impacts of high-speed railways: theories and facts. *European Transport Research Review*, 9(2), 14–20. <https://doi.org/10.1007/s12544-017-0233-0>
- Chang, V., Baudier, P., Zhang, H., Xu, Q., Zhang, J., & Arami, M. (2020). How Blockchain can impact financial services – The overview, challenges and recommendations from expert interviewees. *Technological Forecasting and Social Change*, 158(April), 120166. <https://doi.org/10.1016/j.techfore.2020.120166>
- Cruz, L., Suprpti, W., & Yasa, N. (2015). Aplikasi Theory of Planned Behavior dalam Membangkitkan Niat Berwirausaha bagi Mahasiswa Fakultas Ekonomi UNPAZ, Dili, Timor Leste. *E-Jurnal Ekonomi Dan Bisnis Universitas Udayana*, 12, 895–920.
- Hidayat, W. (2010). Studi Empiris Theory of Planned Behavior dan Pengaruh Kewajiban Moral pada Perilaku Ketidapatuhan Pajak Wajib Pajak Orang Pribadi. *Jurnal Akuntansi Dan Keuangan*, 12(2), 82–93. <https://doi.org/10.9744/jak.12.2.pp.82-93>
- Hosein, R., Gookool, R., & Ali, A. (2016). The Imperative of a Local Economic Development Approach in the Context of the Dutch Disease. *Developmental Local Governance*, 147–177. [https://doi.org/10.1057/9781137558367\\_9](https://doi.org/10.1057/9781137558367_9)
- Huda, R. (2020). Pengembangan Ekonomi Lokal Melalui Sektor Pariwisata di Desa Serang , Kecamatan Karangreja , Kabupaten Purbalingga Local Economic Development through Tourism Sector at Serang Village , Karangreja District , Purbalingga Regency Pendahuluan Upaya pembanguna. *Aspirasi: Jurnal Masalah-Masalah Sosial*, 11(2), 157–170. <https://doi.org/10.22212/aspirasi.v11i2.1470>
- Kesuma, A. I. (2018). The Existence of Bugis Weaving Communities (A Socio-Cultural Reflection of Wajo Society). *Walusuji*, 9(2), 277–288.
- Khambule, I. (2020). A Question of Capacity and Funding: The Role of Local Economic Development Agencies in South Africa's Development Landscape. *Urban Forum*, 31(1), 95–113. <https://doi.org/10.1007/s12132-019-09380-6>
- Khoirunrofik. (2018). Correction to: Local economic structure, productivity growth, and industry life cycle: evidence from Indonesia (Asia-Pacific Journal of Regional Science, (2018), 2, 2, (453-475), 10.1007/s41685-018-0072-6). *Asia-Pacific Journal of Regional Science*, 2(2), 477. <https://doi.org/10.1007/s41685-018-0074-4>
- Maharani, S. N. (2019). Mereduksi Agency Problem pada Kontrak Mudharabah Melalui Perspektif Metafora Amanah. *Seminar Nasional Dan Call For Papers Ekonomi Syariah "Indonesia Sebagai Kiblat Ekonomi Syariah"*, 135–156.
- Maichum, K., Parichatnon, S., & Peng, K. C. (2016). Application of the extended theory of planned behavior model to investigate purchase intention of green products among Thai consumers. *Sustainability (Switzerland)*, 8(10), 1–20. <https://doi.org/10.3390/su8101077>
- Mak, T. M. W., Yu, I. K. M., Wang, L., Hsu, S. C., Tsang, D. C. W., Li, C. N., Yeung, T. L. Y., Zhang, R., & Poon, C. S. (2019). Extended theory of planned behaviour

- for promoting construction waste recycling in Hong Kong. *Waste Management*, 83, 161–170. <https://doi.org/10.1016/j.wasman.2018.11.016>
- Marzuki, S. N. (2019). Praktek Pengembangan Bagi Hasil Peternakan Sapi Masyarakat Kecamatan Barebbo Kabupaten Bone Sulawesi Selatan. *ISLAMICONOMIC: Jurnal Ekonomi Islam*, 10(1), 103–126. <https://doi.org/10.32678/ije.v10i1.115>
- Mattia, G., Guglielmetti Mugion, R., & Principato, L. (2019). Shared mobility as a driver for sustainable consumptions: The intention to re-use free-floating car sharing. *Journal of Cleaner Production*, 237, 117404. <https://doi.org/10.1016/j.jclepro.2019.06.235>
- Mijačić, D. (2013). Strategic Planning of Local Economic Development in Vojvodina. *Decentralization and Local Development in South East Europe*, 179–195. [https://doi.org/10.1057/9781137295651\\_11](https://doi.org/10.1057/9781137295651_11)
- Mitchell, D. M., & Willett, K. (2006). Local economic performance. *Atlantic Economic Journal*, 34(2), 219–232. <https://doi.org/10.1007/s11293-006-9008-z>
- Muhamad, M. (2010). Minimalisasi Masalah Agency Melalui Screening Adverse Selection dalam Pembiayaan Mudarabah di Bank Syari'ah. *Tsaqafah*, 6(1), 43. <https://doi.org/10.21111/tsaqafah.v6i1.138>
- Muhammad. (2014). Masalah agency dalam pembiayaan mudārabah di bank Syariah. *Equilibrium*, 2(1), 1–18.
- Nasution. (2003). *Pengertian Kualitatif: Dasar-dasar dan Aplikasi*. Yayasan Asih Asah.
- Natawibawa, I. W. Y., Irianto, G., & Roekhudin, R. (2018). Theory of Reasoned Action sebagai Prediktor Whistleblowing Intention Pengelola Keuangan di Institusi Pendidikan. *Jurnal Ilmiah Administrasi Publik*, 4(4), 310–319. <https://doi.org/10.21776/ub.jiap.2018.004.04.5>
- Nijaki, L. K., & Worrel, G. (2012). Procurement for sustainable local economic development. *International Journal of Public Sector Management*, 25(2), 133–153. <https://doi.org/10.1108/09513551211223785>
- Nur Maharani, S. (2008). Menyibak Agency Problem Pada Kontrak Mudharabah Dan Alternatif Solusi. *Jurnal Keuangan Dan Perbankan*, Vol. 12(No. 3), 479–493.
- Prayidyaningrum, S., & Djamaludin, M. D. (2016). Theory of Planned Behavior to Analyze the Intention to Use the Electronic Money. *Journal of Consumer Sciences*, 1(2), 1. <https://doi.org/10.29244/jcs.1.2.1-12>
- Putraa, P. (2020). Planned Behavior Theory in Paying Cash Waqf. *International Journal of Psychosocial Rehabilitation*, 24(4), 5669–5677. <https://doi.org/10.37200/ijpr/v24i4/pr201662>
- Qardhawi, Y. (2019). Pelaksanaan Sistem Bagi Hasil (Mawah) Dalam Akad Mudharabah Pada Peternak Sapi Di Gampong Pango Raya Kecamatan Ulee Kareng Banda Aceh. *Minithesis, UIN Ar-Raniry Banda Aceh*, 1–172.
- Ramadhani, S., Suroso, A. I., & Ratonu, J. (2020). Consumer Attitude, Behavioral Intention, and Watching Behavior of Online Video Advertising on Youtube. *Jurnal Aplikasi Manajemen*, 18(3), 493–503. <https://doi.org/10.21776/ub.jam.2020.018.03.09>
- Rasyid, T. G., Aminawar, M., Darwis, M., Peternakan, F., & Hasanuddin, U. (2018). Kemampuan Kewirausahaan Peternak Yang Melakukan Sistem Bagi Hasil (Teseng) Pada Usaha Sapi Potong Di Kabupaten Bone. *Semnas Persepsi Iii Manado*, 225–231.
- Raygor, A. D. (2016). *The Theory of Planned Behavior: Understanding Consumer Intentions to Purchase Local Food in Iowa*. 97.
- Residents, U., Behaviour, P. T., Chen, W., Cao, C., Fang, X., & Kang, Z. (2019).

Tjokro (Author Family name here)

*Expanding the Theory of Planned Behaviour to Reveal.*

- Rogerson, C. M. (2018). Local economic development in Midrand, South Africa's ecocity. *Local Economic Development in the Changing World: The Experience of Southern Africa*, 14(2), 231–251. <https://doi.org/10.1007/s12132-003-0011-z>
- Rohani, S., Siregar, A. R., Rasyid, T. G., Aminawar, M., & Darwis, M. (2020). The farmer competency that doing partnership systems ( Teseng ) in beef cattle business at Bone regency , South Sulawesi province , Indonesia The farmer competency that doing partnership systems ( Teseng ) in beef cattle business at Bone regency , South S. *IOP Conference Series: Earth and Environmental Science*. <https://doi.org/10.1088/1755-1315/492/1/012148>
- Seni, N. N. A., & Ratnadi, N. M. D. (2017). Theory of Planned Behavior Untuk Memprediksi Niat Berinvestasi. *E-Jurnal Ekonomi Dan Bisnis Universitas Udayana*, 12, 4043. <https://doi.org/10.24843/eeb.2017.v06.i12.p01>
- Smirnova, N. V. (2013). Local Economic Development in the 21st Century: Quality of Life and Sustainability, by Daphne T. Greenwood and Richard P.F. Holt. *Eastern Economic Journal*, 39(2), 256–258. <https://doi.org/10.1057/eej.2011.13>
- Sofyan, A. S., Yunus, A. R., Muslihati, Anwar, N., & Saigy, E. N. (2021). Local Economic Practices in Developing Islamic Financial Products in Indonesia. *Al-Tijary Jurnal Ekonomi Dan Bisnis Islam*, 6(2), 141–163.
- Sugiyono. (2009). *Metode Penelitian Kuantitatif, Kualitatif dan R & D* (VI). Alfabeta.
- Sulham. (2018). Analisis Alasan Peternak Melakukan Sistem Bagi Hasil ( Teseng ). *Jurnal Studi Ekonomi*, 3(2), 31–46.
- Syukur, M. (2015). Local Wisdom in Economic and Social Systems of Bugis-Wajo Weaver Community. *Bandung Creative Movement (BCM) Journal*, 2(1), 204–220.
- Tarjo, T., Suwito, A., Aprillia, I. D., & Ramadan, G. R. (2019). Theory of planned behavior and whistleblowing intention. *Jurnal Keuangan Dan Perbankan*, 23(1), 45–60. <https://doi.org/10.26905/jkdp.v23i1.2714>
- Tommasetti, A., Singer, P., Troisi, O., & Maione, G. (2018). Extended Theory of Planned Behavior (ETPB): Investigating customers' perception of restaurants' sustainability by testing a structural equation model. *Sustainability (Switzerland)*, 10(7), 1–21. <https://doi.org/10.3390/su10072580>
- Wahyuni, A. S. (2013). Penyesuaian Konsep Bagi Hasil Adat-Syariah. *Jurnal Akuntansi Multiparadigma*. <https://doi.org/10.18202/jamal.2013.12.7210>
- Wulandari, N. A. (2020). Pandangan Islam Terhadap Praktik Bagi Hasil “Teseng” Pada Masyarakat Manggalung Kecamatan Mandalle Kabupaten Pangkep. *J. Res Islamic Econ*, 7(2), 291–317.
- Zainabriani, Sirajuddin, S. N., & Saleh, I. M. (2015). Identifikasi Faktor Peternak Dan Pemilik Modal Melakukan Sistem Bagi Hasil Tesengsapi Potong di Desa Batu Pute, Kecamatan Soppeng Riaja, Kabupaten Barru. *JIIP*, 1(Juni), 9–14.

View Email



From: "Muslimin Kara" <muslimin.kara@uin.alauddin.ac.id>

To: "Alim Syariati" <alim.syariati@uin-alauddin.ac.id>

Subject: [Minds] Revised Version Uploaded

Dear Editors:

A revised version of "Consumer Choice Behavior in Teseng Practices: Qualitative Analysis of Theory of Planned Behavior" has been uploaded by the author Muslimin Kara.

Submission URL: <https://journal.uin-alauddin.ac.id/index.php/minds/workflow/index/36014/3>

Alim Syariati

View Email



From: "Muslimin Kara" <muslimin.kara@uin.alauddin.ac.id>

To: "Alim Syariati" <alim.syariati@uin-alauddin.ac.id>

Subject: [Minds] Revised Version Uploaded

Dear Editors:

A revised version of "Consumer Choice Behavior in Teseng Practices: Qualitative Analysis of Theory of Planned Behavior" has been uploaded by the author Muslimin Kara.

Submission URL: <https://journal.uin-alauddin.ac.id/index.php/minds/workflow/index/36014/3>

Alim Syariati

**View Email**

From: "Nury Ariani Wulansari" <nuryariani@mail.unnes.ac.id>

To: "Muslimin Kara" <muslimin.kara@uin.alauddin.ac.id>, "Ega Rusanti" <egarusanti22@gmail.com>, "A. Syathir Sofyan" <a.syathir@uin-alauddin.ac.id>

Subject: [Minds] Editor Decision

Muslimin Kara, Ega Rusanti, A. Syathir Sofyan (Author):

The editing of your submission, "Consumer Choice Behavior in Partnership Systems (Teseng): Qualitative Analysis of Theory of Planned Behavior," is complete. We are now sending it to production.

Submission URL: <https://journal.uin-alauddin.ac.id/index.php/minds/authorDashboard/submission/36014>

Nury Ariani Wulansari

Scopus Id: 57188958572; Universitas Negeri Semarang, Indonesia

nuryariani@mail.unnes.ac.id

**View Email**

From: "Nury Ariani Wulansari" <nuryariani@mail.unnes.ac.id>

To: "Muslimin Kara" <muslimin.kara@uin.alauddin.ac.id>, "Ega Rusanti" <egarusanti22@gmail.com>, "A. Syathir Sofyan" <a.syathir@uin-alauddin.ac.id>

Subject: [Minds] Editor Decision

Muslimin Kara, Ega Rusanti, A. Syathir Sofyan (Author):

The editing of your submission, "Consumer Choice Behavior in Partnership Systems (Teseng): Qualitative Analysis of Theory of Planned Behavior," is complete. We are now sending it to production.

Submission URL: <https://journal.uin-alauddin.ac.id/index.php/minds/authorDashboard/submission/36014>

Nury Ariani Wulansari

Scopus Id: 57188958572; Universitas Negeri Semarang, Indonesia

nuryariani@mail.unnes.ac.id



## Muslimin Kara, Consumer Choice Behavior in Partnership Systems (Teseng): Qualitative Analysis of Theory of Planned Behavior



### History

### Notes

Help

Date	User	Event
▶ 2023-06-14	Nury Ariani Wulansari	Revision "nury, 8. Muslimin.pdf" (file ID 116044-2) was uploaded.
2023-06-14	Nury Ariani Wulansari	The submission's issue metadata was updated.
▶ 2023-06-14	Nury Ariani Wulansari	A file "8. Muslimin.pdf" was uploaded for submission 36014 by nury.
2023-06-14	Nury Ariani Wulansari	The submission's issue metadata was updated.
▶ 2023-06-14	Nury Ariani Wulansari	An email has been sent: [Minds] Editor Decision
2023-06-14	Nury Ariani Wulansari	An editor decision (Send To Production) for article 36014 was recorded by Nury Ariani Wulansari.
▶ 2023-06-14	Nury Ariani Wulansari	A file "8. Muslimin.docx" was uploaded for submission 36014 by nury.
2023-06-14	Nury Ariani Wulansari	Submission metadata updated
▶ 2023-06-07	Muslimin Kara	An email has been sent: [Minds] Revised Version Uploaded
2023-06-07	Muslimin Kara	A file "36014-Article_Text-108795-1-4-20230301_(2)[1][1].docx" had its last revision removed by muslimin123.
▶ 2023-06-07	Muslimin Kara	An email has been sent: [Minds] Revised Version Uploaded
2023-05-30	Ahmad Tibrizi Sony Wicaksono	An editor decision (Accept Submission) for article 36014 was recorded by Ahmad Tibrizi Sony Wicaksono.
▶ 2023-05-22	Ahmad Tibrizi Sony Wicaksono	A file "36014-Article Text-108795-1-4-20230301 (2).docx" was uploaded for submission 36014 by tibrizisony.
▶ 2023-04-13	Alim Syariati	An email has been sent: [Minds] Editor Decision

## Muslimin Kara, Consumer Choice Behavior in Partnership Systems (Teseng): Qualitative Analysis of Theory of Planned Behavior



### History

### Notes

Help

Date	User	Event
▶ 2023-06-14	Nury Ariani Wulansari	Revision "nury, 8. Muslimin.pdf" (file ID 116044-2) was uploaded.
2023-06-14	Nury Ariani Wulansari	The submission's issue metadata was updated.
▶ 2023-06-14	Nury Ariani Wulansari	A file "8. Muslimin.pdf" was uploaded for submission 36014 by nury.
2023-06-14	Nury Ariani Wulansari	The submission's issue metadata was updated.
▶ 2023-06-14	Nury Ariani Wulansari	An email has been sent: [Minds] Editor Decision
2023-06-14	Nury Ariani Wulansari	An editor decision (Send To Production) for article 36014 was recorded by Nury Ariani Wulansari.
▶ 2023-06-14	Nury Ariani Wulansari	A file "8. Muslimin.docx" was uploaded for submission 36014 by nury.
2023-06-14	Nury Ariani Wulansari	Submission metadata updated
▶ 2023-06-07	Muslimin Kara	An email has been sent: [Minds] Revised Version Uploaded
2023-06-07	Muslimin Kara	A file "36014-Article_Text-108795-1-4-20230301_(2)[1][1].docx" had its last revision removed by muslimin123.
▶ 2023-06-07	Muslimin Kara	An email has been sent: [Minds] Revised Version Uploaded
2023-05-30	Ahmad Tibrizi Sony Wicaksono	An editor decision (Accept Submission) for article 36014 was recorded by Ahmad Tibrizi Sony Wicaksono.
▶ 2023-05-22	Ahmad Tibrizi Sony Wicaksono	A file "36014-Article Text-108795-1-4-20230301 (2).docx" was uploaded for submission 36014 by tibrizisony.
▶ 2023-04-13	Alim Syariati	An email has been sent: [Minds] Editor Decision

## Muslimin Kara, Consumer Choice Behavior in Partnership Systems (Teseng): Qualitative Analysis of Theory of Planned Behavior



### History

### Notes

Help

Date	User	Event
▶ 2023-06-14	Nury Ariani Wulansari	Revision "nury, 8. Muslimin.pdf" (file ID 116044-2) was uploaded.
2023-06-14	Nury Ariani Wulansari	The submission's issue metadata was updated.
▶ 2023-06-14	Nury Ariani Wulansari	A file "8. Muslimin.pdf" was uploaded for submission 36014 by nury.
2023-06-14	Nury Ariani Wulansari	The submission's issue metadata was updated.
▶ 2023-06-14	Nury Ariani Wulansari	An email has been sent: [Minds] Editor Decision
2023-06-14	Nury Ariani Wulansari	An editor decision (Send To Production) for article 36014 was recorded by Nury Ariani Wulansari.
▶ 2023-06-14	Nury Ariani Wulansari	A file "8. Muslimin.docx" was uploaded for submission 36014 by nury.
2023-06-14	Nury Ariani Wulansari	Submission metadata updated
▶ 2023-06-07	Muslimin Kara	An email has been sent: [Minds] Revised Version Uploaded
2023-06-07	Muslimin Kara	A file "36014-Article_Text-108795-1-4-20230301_(2)[1][1].docx" had its last revision removed by muslimin123.
▶ 2023-06-07	Muslimin Kara	An email has been sent: [Minds] Revised Version Uploaded
2023-05-30	Ahmad Tibrizi Sony Wicaksono	An editor decision (Accept Submission) for article 36014 was recorded by Ahmad Tibrizi Sony Wicaksono.
▶ 2023-05-22	Ahmad Tibrizi Sony Wicaksono	A file "36014-Article Text-108795-1-4-20230301 (2).docx" was uploaded for submission 36014 by tibrizisony.
▶ 2023-04-13	Alim Syariati	An email has been sent: [Minds] Editor Decision