

Syamsuri Syakri

by TURNITIN NO REPOSITORY

Submission date: 29-Nov-2023 09:25PM (UTC-0500)

Submission ID: 2237167872

File name: 442-452.pdf (1.22M)

Word count: 4642

Character count: 23615

<http://www.pjbs.org>

PJBS

ISSN 1028-8880

**Pakistan
Journal of Biological Sciences**

ANSI*net*

Asian Network for Scientific Information
308 Lasani Town, Sargodha Road, Faisalabad - Pakistan



Research Article

Microorganism Test on Biscuits Combined With Red Algae Extract (*Eucheuma denticulatum*) and Tempeh (*Glycine max*)

¹Syamsuri Syakri, ¹Indah, ¹Karlina Amir Tahir, ¹Arifah Dewi, ²Hasma, ²Yusnita Usman,
²Rahmatullah Muin and ²La Sakka

¹Faculty of Medicine and Health Sciences, Universitas Islam Negeri Alauddin Makassar, Gowa, South Sulawesi 92113, Indonesia

²Associate degree of Pharmacy, Sekolah Tinggi Ilmu Kesehatan Nani Hasanuddin, Makassar, Sulawesi Selatan 90245, Indonesia

Abstract

Background and Objective: Biscuits are snacks that are widely circulated in the market but do not meet Indonesian National standards so they are harmful to consumer health. This study aims to determine the total plate count (TPC) value of bacteria and mold/yeast and determine the presence or absence of bacterial contamination of *Staphylococcus aureus* and *Escherichia coli* in biscuit products. **Materials and Methods:** This study is descriptive in nature using three different sample types. Total plate count (TPC) value testing was carried out using the pour plate method. Meanwhile, to determine the presence or absence of *Staphylococcus aureus* bacteria using MSA (mannitol salt agar) media with the spread plate technique. The *Escherichia coli* test uses EMBA (eosin methylene blue agar) media with a streak plate technique. **Results:** Three samples of biscuit formula obtained ALT of bacteria in sample A) 2.2×10^7 colonies/g, sample B) 1.9×10^7 colonies/g and sample C) 4.1×10^7 colonies/g. Mold/khamir obtained in sample A) 7.7×10^5 colonies/g, sample B) 5.1×10^6 colonies/g and sample C) 1.1×10^6 colonies/g. In the *Staphylococcus aureus* bacteria test, the results were not overgrown with *Staphylococcus aureus* bacteria and in the *Escherichia coli* bacteria test, the results were easily purplish red in color. **Conclusion:** It can be concluded that only formula C samples meet the requirements of the SNI quality standards. In the pathogenic microbial test, there was no growth of *Staphylococcus aureus* and *Escherichia coli* microbes in the three biscuit formula samples.

Key words: *Eucheuma denticulatum*, *Glycine max*, biscuits, microorganism, contamination, product

Citation: Syakri, S., Indah, K.A. Tahir, A. Dewi and Hasma *et al.*, 2023. Microorganism test on biscuits combined with red algae extract (*Eucheuma denticulatum*) and tempeh (*Glycine max*). Pak. J. Biol. Sci., 26: 442.452.

Corresponding Author: Syamsuri Syakri, Faculty of Medicine and Health Sciences, Universitas Islam Negeri Alauddin Makassar, Gowa, South Sulawesi 92113, Indonesia Tel: +6282188482222

Copyright: © 2023 Syamsuri Syakri *et al.* This is an open access article distributed under the terms of the creative commons attribution License, which permits unrestricted use, distribution and reproduction in any medium, provided the original author and source are credited.

Competing Interest: The authors have declared that no competing interest exists.

Data Availability: All relevant data are within the paper and its supporting information files.

INTRODUCTION

Biscuits are snacks or snacks that have low water content, made by baking dough made from wheat flour with or without substitutes, oil or fat, with or without the addition of other food ingredients and permitted food additives¹. Biscuits until now are much favored by the public so that snacks or snacks from various economic groups and age groups. Saksono with his research stated that biscuit consumption increased by 5-8% along with the increase in domestic consumption².

Currently, there are many biscuits on the market in various shapes and flavors. However, not all biscuits on the market meet the Indonesian National Standards (SNI) so that they are harmful to consumer health. This can occur because the biscuits have been contaminated by physical, chemical and microbial contamination. Microorganism contamination in unqualified food can cause diseases when consumed by humans such as diarrhea, poisoning and more danger if the food is contaminated by pathogenic microorganisms which can be fatal to the person who consumes it. Microbes can contaminate food through water, dust, air, soil and processing equipment (during the production or preparation process)³.

Food storage factors must also be considered because they will determine food safety and microbiological quality. Food storage from raw materials to products needs to be considered. Shelf life will also affect the proliferation of microbes in the product. Gut microbiota is known to affect host health at several different levels: By competing with pathogens, by interacting with the immune system and by producing beneficial and detrimental metabolites⁴.

The quality of the raw materials determines the food consumption. Good raw materials that are not overgrown with microbes can be predicted to have a longer shelf life. Food that is stored for too long and has been contaminated with mold will change color, shape and texture. This is caused by the activity of the mold that continues to grow. The longer the incubation time, the more the number of mold colonies increases because it is supported by sufficient nutritional factors from food. Molds that contaminate food can interfere with human health, because some species of molds are capable of producing mycotoxins⁵.

Pathogenic and non-pathogenic microbes when present in large quantities will be very harmful to the body. The microbiological quality of food and beverages is an important issue and needs great attention, because it can cause poisoning⁶.

Several cases of poisoning were caused by the consumption of food and beverages, including in 2007 there was a snack poisoning in one of the hotels in Padang and

based on the results of laboratory clinical tests, it was found that the food samples were positive for *Staphylococcus aureus* and *Bacillus cereus*⁷.

The MUI's fatwa on microbes and microbial products says microbes are basically halal as long as they do no harm and are not exposed to uncleanliness. The microbial content found in food and beverages produced with the help of microbes is called microbial products⁸. Microbial products are halal as long as the ingredients, from preparation to production, are not haram and unclean⁹. In Islam, Muslims are required to consume halal food, because every food that Muslims consume will be ingrained in the body and become an important source of energy for life¹⁰.

This study was conducted to test the contamination of *Staphylococcus aureus*, *Escherichia coli* and mold microorganisms in biscuits from a combination of red algae extract (*Eucheuma denticulatum*) and tempeh powder (*Glycine max*) based on product shelf life.

MATERIALS AND METHODS

Study area: The research was conducted at the Laboratory of Pharmaceutical Microbiology, Faculty of Medicine and Health Sciences, State Islamic University of Alauddin Makassar, from February to May 2023.

Materials: The materials used in this study 5 g of biscuits were used, 70% alcohol, sterile distilled water, nutrient agar (NA) medium, potato dextrose agar (PDA) medium, mannitol salt agar (MSA) medium, lactose broth (LB) medium and eosin methylene blue agar (EMBA) medium, measuring cup, vortex, dropper pipette, volume pipette, spoit, test tube, beaker glass, stirring glass, petri dish, bunsen, lighter, hotplate, erlenmeyer, test tube rack, ose needle, spatula, fat cotton, aluminum foil, label paper and colony counter.

Methods

Sample preparation: Prepare for food samples composition in the form of biscuits as shown in the Table 1 and biscuit formula 1-3 shown in the Fig. 1. Then, a dilution bottle containing 9 mL of sterile distilled water was prepared¹¹. After that, 1 g of biscuits was weighed and then crushed until smooth with a mortar¹². The crushed sample is then put into a dilution bottle and shaken until homogeneous (dilution 10^{-1}). From dilution 10^{-1} , then taken 1 mL with a spoit and put into a dilution bottle and shaken until homogeneous (dilution 10^{-2}). From dilution 10^{-2} , take 1 mL with a spoit and put into a dilution bottle, shaken until homogeneous (dilution 10^{-3}) do the same for dilutions 10^{-4} , 10^{-5} and 10^{-6} .

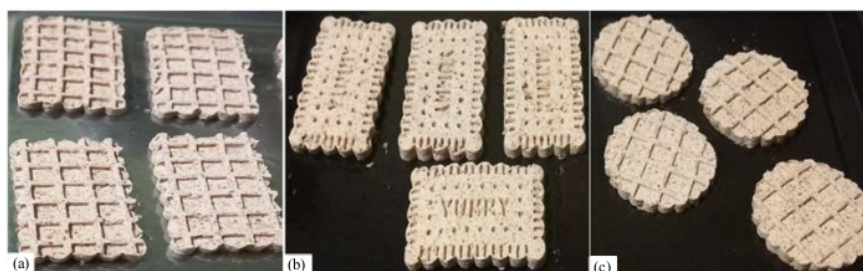


Fig. 1(a-c): Biscuit formula 1, 2 and 3

Material	Usability
Red algae extract	Main ingredients
Tempeh powder	Main ingredients
Sago flour	Fastener
Stevia sugar	Sweetener
Vanilla powder	Fragrance
Water	Solvent

Microbiological test of biscuit preparations

Bacterial ALT test: In the bacterial ALT test, three dilutions of biscuit food were taken, namely dilutions 10^{-4} , 10^{-5} and 10^{-6} then pipetted as much as 1 mL and then put into a sterile petri dish. After that, natrium agar medium was added until the entire bottom of the cup was covered, then homogenized by rotating 7 times to the left and 7 times to the right allowing it to solidify¹³. Then, incubated for 1×24 hrs at 37°C and counted the number of bacterial colonies present¹⁴.

Mold ALT test: In the mold ALT test, three dilutions of biscuit food were taken, namely dilutions 10^{-4} , 10^{-5} and 10^{-6} were pipetted as much as 1 mL and then placed in a sterile petri dish. After that, PDA medium was added until the entire bottom of the cup was covered, homogenized and allowed to solidify. Then, incubated for 3×24 hrs at room temperature, counted the number of existing mold colonies¹⁵.

Staphylococcus aureus bacteria test: In the *Staphylococcus aureus* bacterial test, three dilutions of biscuit food were taken, namely dilutions of 10^{-4} , 10^{-5} and 10^{-6} then each dilution was taken as much as 1 mL and then put into a petri dish containing MSA media that had solidified using the scatter cup method¹¹. Then the petri dish containing the inoculant was incubated using an incubator at 37°C for 24 hrs. Observations were then made of the colony characteristics (color and shape of colonies) formed on the test media and compared with the characteristics of colonies that generally grow on MSA media¹⁶. *Staphylococcus aureus* colonies will show round-shaped, yellow-colored colonies surrounded by a yellow zone around the colony¹⁷.

Escherichia coli bacteria test: Prepared nine test tubes each dilution consists of 3 tubes in which there is a durham tube in an inverted state. From dilution 10^{-1} , 1 mL was pipetted into the first series test tube containing 9 mL lactose broth (LB) medium. From dilution 10^{-2} , 1 mL was pipetted into the second series test tube containing 9 mL lactose broth (LB) medium, the same was done for dilution 10^{-3} . All tubes were homogenized and incubated for 1×24 hrs at 37°C ¹⁸. A positive reaction with air bubbles in the durham tube and or a color change from yellow to cloudy in the test solution¹⁹.

From the tubes that gave positive results, 1 ose was taken and then inoculated in a scratch on eosin methylene blue agar (EMBA) medium. Furthermore, it was incubated at 37°C for 24 hrs. A positive reaction is characterized by the formation of metallic green colonies which are colonies of *Escherichia coli* bacteria²⁰.

Data analysis: Data obtained from the calculation of the number of bacterial colonies, mold/khamir in the total plate count (TPC) test and identification of *Staphylococcus aureus* and *Escherichia coli* bacteria in biscuits were analyzed descriptively in tabular form accompanied by narration.

RESULTS AND DISCUSSION

Bacterial TPC test results on biscuits: Total plate count test of bacteria in biscuit samples obtained results at a shelf life of 1 month were shown in the Table 2.

In the results of the bacterial ALT test, it was found that three test sample formulas did not meet the requirements with the results of contamination in formula 1 which amounted to 2.2×10^7 colonies/g as shown in the Fig. 2. Formula 2 which was 1.9×10^7 colonies/g as shown in Fig. 3. And formula 3 which was 4.1×10^7 colonies/g as shown in Fig. 4. Determination of total plate count (ALT) of bacteria with the standard plate count (SPC) method using nutrient agar (NA) medium. From the observation results of the three biscuit formulas, the results showed that they did

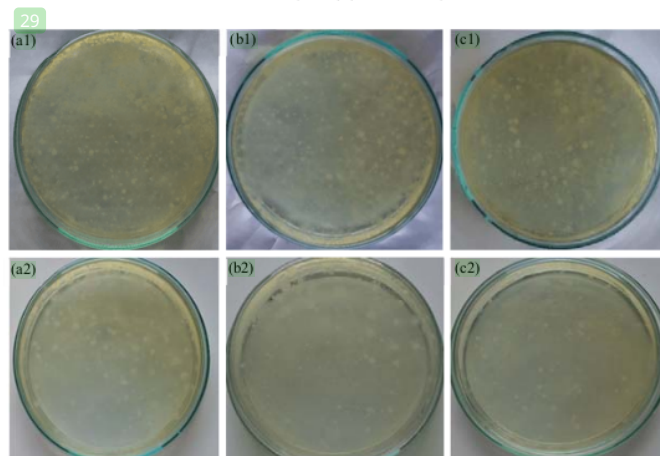


Fig. 2(a1-c2): ALT result of formula 1 bacteria, (a1) Sample formula 1 dilution 10^{-4} (cup 1), (a2) Sample formula 1 dilution 10^{-4} (cup 2), (b1) Sample formula 1 dilution 10^{-5} (cup 1), (b2) Sample of formula 1 dilution 10^{-5} (cup 2), (c1) Sample of formula 1 dilution 10^{-6} (cup 1) and (c2) Sample of formula 1 dilution 10^{-6} (cup 2)

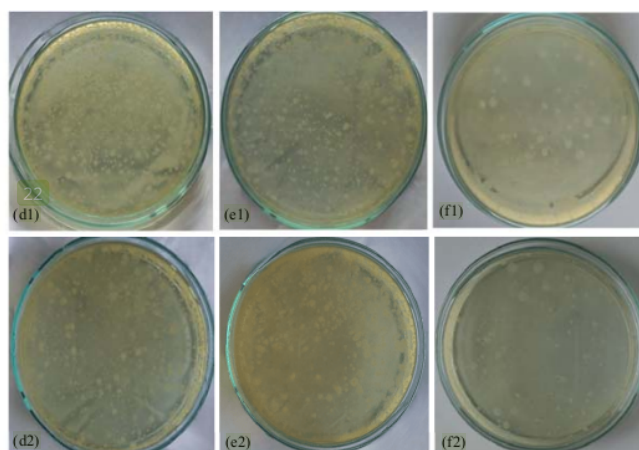


Fig. 3(d1-f2): ALT results of Formula 2 bacteria, (d1) Sample formula 2 dilution 10^{-4} (cup 1), (d2) Sample formula 2 dilution 10^{-4} (cup 2), (e1) Sample formula 2 dilution 10^{-5} (cup 1), (e2) Sample formula 2 dilution 10^{-5} (cup 2), (f1) Sample formula 2 dilution 10^{-6} (cup 1) and (f2) Sample formula 2 dilution 10^{-6} (cup 2)

Table 2: Results of bacterial total plate count test on biscuits

Sample name	Dilution	Number of colonies			Alt (colonies/g)	Contamination standard	Ket
		Cup 1	Cup 2	Average			
Biscuit 1	10^{-4}	205	67	136	2.2×10^7 colonies/g	1×10^4 colonies/g	TMS
	10^{-5}	94	51	72.5			
	10^{-6}	79	39	59			
Biscuit 2	10^{-4}	239	158	198.5	1.9×10^7 colonies/g		TMS
	10^{-5}	216	98	157			
	10^{-6}	49	33	41			
Biscuit 3	10^{-4}	∞	∞	∞	4.1×10^7 colonies/g		TMS
	10^{-5}	221	109	165			
	10^{-6}	87	45	66			

MS: Qualified and TMS: Not eligible

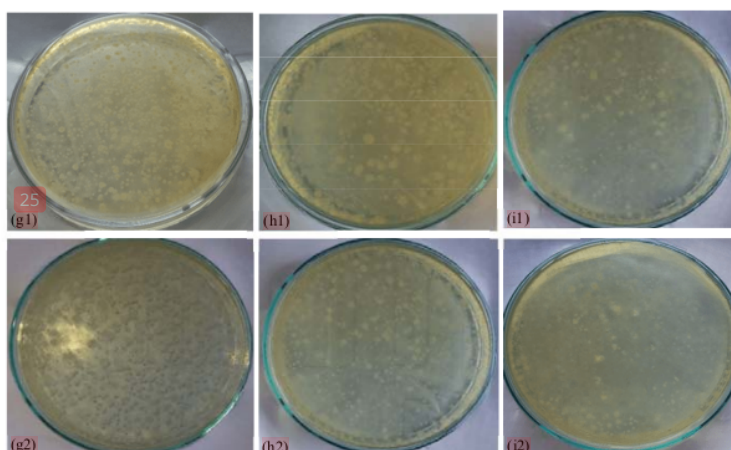


Fig. 4(g1-i2): ALT results of Formula 3 bacteria, (g1) Sample formula 3 dilution 10^{-4} (cup 1), (g2) Sample formula 3 dilution 10^{-4} (cup 2), (h1) Sample formula 3 dilution 10^{-5} (cup 1), (h2) Sample formula 3 dilution 10^{-5} (cup 2), (i1) Sample of formula 3 dilution 10^{-6} (cup 1) and (i2) Sample of formula 3 dilution 10^{-6} (cup 2)

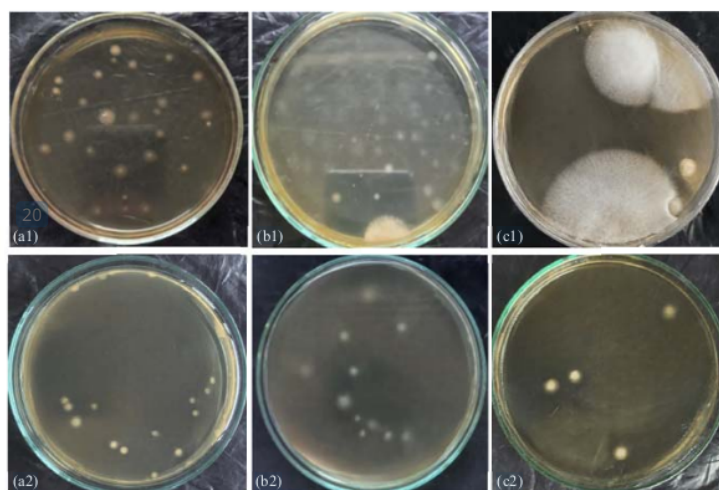


Fig. 5(a1-c2): ALT results of mold/yeast of Formula 1, (a1) Sample formula 1 dilution 10^{-4} (cup 1), (a2) Sample formula 1 dilution 10^{-4} (cup 2), (b1) Sample of formula 1 dilution 10^{-5} (cup 1), (b2) Sample formula 1 dilution 10^{-5} (cup 2), (c1) Sample of formula 1 dilution 10^{-6} (cup 1) and (c2) Sample formula 1 dilution 10^{-6} (cup 2)

not meet the requirements because the number of bacterial colonies exceeded the limit according to the National Standardization Agency, 2011. Microbial contamination biscuit quality testing parameters: Total plate number max., 1×10^4 colonies/g. Based on these provisions, the three biscuit formulas do not meet the requirements¹⁴.

AKK test results on biscuits: Mold total plate count test on biscuit samples obtained results at a shelf life of 1 month were shown in the Table 3.

In the AKK test results, the contamination results in formula 1 were 7.7×10^5 colonies/g as shown in Fig. 5. Formula 2 was 5.1×10^6 colonies/g as shown in Fig. 6. and formula 3 was 1.1×10^6 colonies/g as shown in Fig. 7.

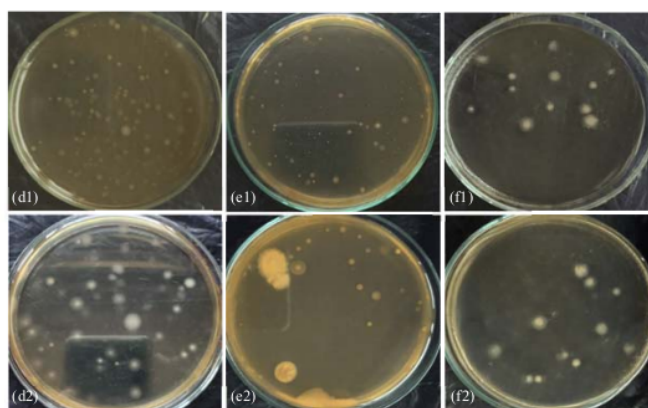


Fig. 6(d1-f2): ALT results of mold/yeast of formula 2, (d1) Sample formula 2 dilution 10^{-4} (cup 1), (d2) Sample formula 1 dilution 10^{-4} (cup 2), (e1) Sample of formula 2 dilution 10^{-5} (cup 1), (e2) Sample formula 2 dilution 10^{-5} (cup 2), (f1) Sample of formula 2 dilution 10^{-6} (cup 1) and (f2) Sample formula 2 dilution 10^{-6} (cup 2)

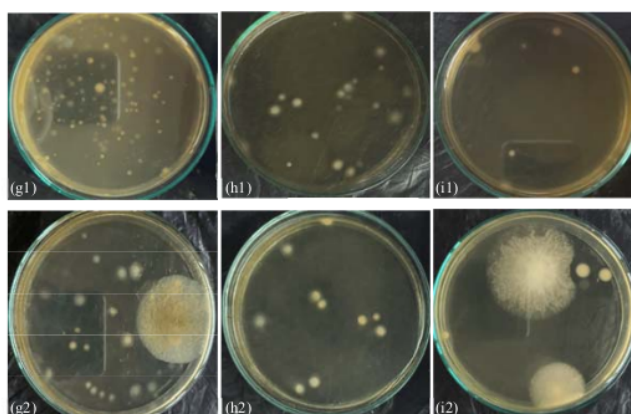


Fig. 7(g1-i2): ALT results of mold/yeast of formula 3, (g1) Sample formula 3 dilution 10^{-4} (cup 1), (g2) Sample formula 3 dilution 10^{-4} (cup 2), (h1) Sample of formula 3 dilution 10^{-5} (cup 1), (h2) Sample formula 3 dilution 10^{-5} (cup 2), (i1) Sample of formula 3 dilution 10^{-6} (cup 1) and (i2) Sample formula 3 dilution 10^{-6} (cup 2)

Table 3: AKK results on biscuits combination read algae extract and tempeh

Sample name	Dilution	Number of colonies			Alt (colonies/g)	Contamination standard	Ket
		Cup 1	Cup 2	Average			
Biscuit 1	10^{-4}	27	20	23.5	7.7×10^5 colonies/g	2×10^2 colonies/g	TMS
	10^{-5}	15	11	13			
	10^{-6}	5	4	4.5			
Biscuit 2	10^{-4}	130	44	87	5.1×10^6 colonies/g		TMS
	10^{-5}	40	18	29			
	10^{-6}	12	11	11.5			
Biscuit 3	10^{-4}	73	24	48.5	1.1×10^6 colonies/g		MS
	10^{-5}	23	10	16.5			
	10^{-6}	6	5	5.5			

MS: Qualified and TMS: Not eligible

Determination of the total plate number AKK value with the standard plate count (SPC) method using potato dextrose agar (PDA) medium. From the observation of the three biscuit formulas, the results showed that formula 1 and formula 2 did not meet the requirements because the number of AKK colonies exceeded the limit. Microbial contamination biscuit quality testing parameters: In mold/chamir max., 2×10^2 colonies/g¹⁴. Based on these provisions, of the three biscuit formulas, only formula 3 meets the requirements and formula 1 and formula 2 do not meet the requirements.

Staphylococcus aureus bacteria contamination test results:

Test results for *Staphylococcus aureus* bacteria in biscuit samples on MSA media were shown in the Table 4.

In the results of testing *Staphylococcus aureus* bacteria using mannitol salt agar (MSA) medium as a selective medium by scattering, the results obtained were negative because there were no colonies that grew on mannitol salt agar (MSA) media. The MSA media is a medium commonly used to detect the growth of *Staphylococcus aureus* in a test material. On MSA media, *Staphylococcus aureus* colonies will show round, yellow colonies surrounded by a yellow zone around the colony. The yellow zone is formed due to the ability of the colony to ferment mannitol which is one of the components contained in MSA media. Colonies that appear yellow are caused by *Staphylococcus aureus* colonies producing

lipochrome pigments that are golden yellow and orange yellow. This pigment appears during the 24 hrs incubation process at 37°C. *Staphylococcus aureus* test results formula 1 as shown in Fig. 8. *Staphylococcus aureus* test results formula 2 as shown in Fig. 9. *Staphylococcus aureus* test results formula 3 as shown in Fig. 10.

Escherichia coli bacteria contamination test results: Test results for *E. coli* bacteria on biscuit samples test results for *Staphylococcus aureus* bacteria in biscuit samples on MSA media were shown in the Table 5.

The first *Escherichia coli* bacteria test carried out is a presumptive test using LB (lactose broth) media as shown in Fig. 11. The fermentation results are positive if the *E. coli* bacteria have air bubbles in the durham tube and or experience a color change from yellow to cloudy in the test solution. *Escherichia coli* bacteria test results, a1-a3 sample formula 1, b1-b3 sample formula 2 and c1-c3 sample formula 3 as shown in Fig. 12. The result obtained on LB media is turbidity in the sample. Then the positive results were continued on the selective medium, namely EMBA media by scratching and the results obtained were negative, namely the absence of a metallic green color but a purplish pink color which indicated that all samples incubated on EMBA media did not grow *E. coli* as shown in Fig. 13, but indicated the presence of coliform.

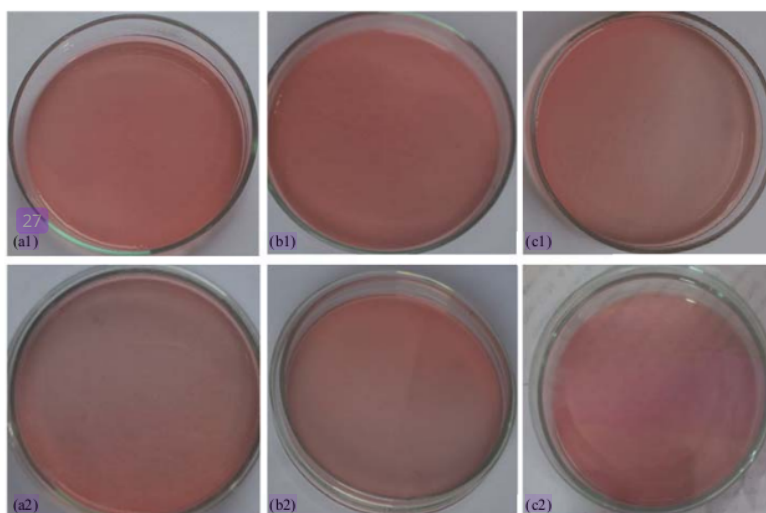


Fig. 8(a1-c2): *Staphylococcus aureus* test results formula 1, (a1) Sample formula 1 dilution 10^{-1} (cup 1), (a2) Sample formula 1 dilution 10^{-1} (cup 2), (b1) Sample of formula 1 dilution 10^{-2} (cup 1), (b2) Sample formula 2 dilution 10^{-2} (cup 2), (c1) Sample of formula 1 dilution 10^{-3} (cup 1) and (c2) Sample formula 2 dilution 10^{-3} (cup 2)

Table 4: *Staphylococcus aureus* bacteria results

Sample	Dilution	<i>Staphylococcus aureus</i>		Colonies on MSA media
		C1	C2	
Formula 1	10 ⁻¹	-	-	Not overgrown with <i>S. aureus</i> bacteria
	10 ⁻²	-	-	Not overgrown with <i>S. aureus</i> bacteria
	10 ⁻³	-	-	Not overgrown with <i>S. aureus</i> bacteria
Formula 2	10 ⁻¹	-	-	Not overgrown with <i>S. aureus</i> bacteria
	10 ⁻²	-	-	Not overgrown with <i>S. aureus</i> bacteria
	10 ⁻³	-	-	Not overgrown with <i>S. aureus</i> bacteria
Formula 3	10 ⁻¹	-	-	Not overgrown with <i>S. aureus</i> bacteria
	10 ⁻²	-	-	Not overgrown with <i>S. aureus</i> bacteria
	10 ⁻³	-	-	Not overgrown with <i>S. aureus</i> bacteria

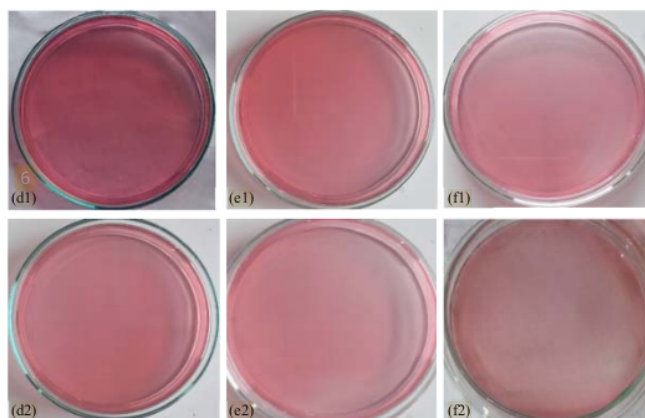


Fig. 9(d1-f2): *Staphylococcus aureus* test results formula 2, (d1) Sample formula 2 dilution 10⁻¹ (cup 1), (d2) Sample formula 1 dilution 10⁻¹ (cup 2), (e1) Sample of formula 2 dilution 10⁻² (cup 1), (e2) Sample formula 2 dilution 10⁻² (cup 2), (f1) Sample of formula 2 dilution 10⁻³ (cup 1) and (f2) Sample formula 2 dilution 10⁻³ (cup 2)

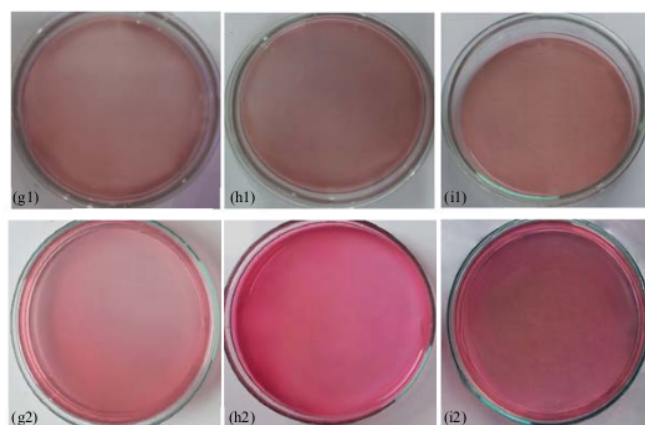


Fig. 10(g1-i2): *Staphylococcus aureus* test results formula 3, (g1) Sample formula 3 dilution 10⁻¹ (cup 1), (g2) Sample formula 3 dilution 10⁻¹ (cup 2), (h1) Sample of formula 3 dilution 10⁻² (cup 1), (h2) Sample formula 3 dilution 10⁻² (cup 2), (i1) Sample of formula 3 dilution 10⁻³ (cup 1) and (i2) Sample formula 3 dilution 10⁻³ (cup 2)

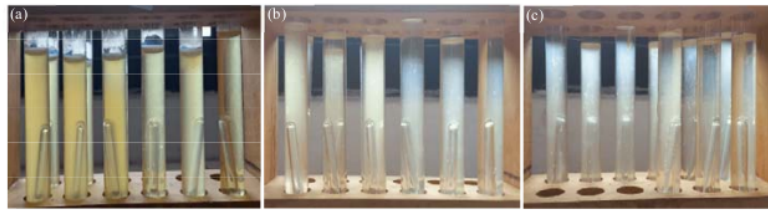


Fig. 11: Test on LB media sample formula 1, 2, 3

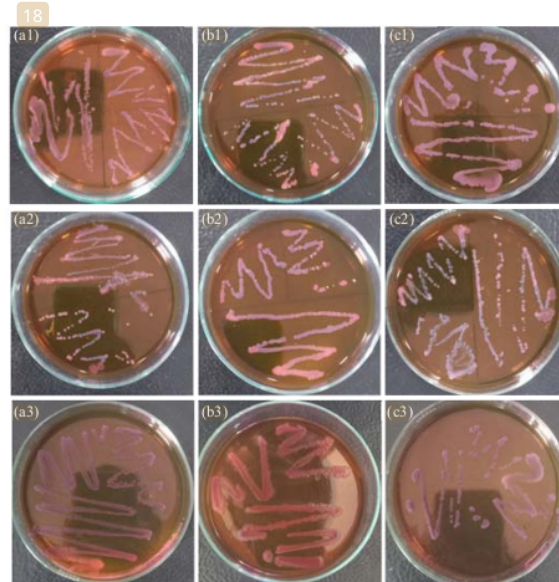


Fig. 12(a1-c3): *Escherichia coli* bacteria test results, (a1-a3) Sample formula 1, (b1-b3) Sample formula 2 and (c1-c3) Sample formula 3

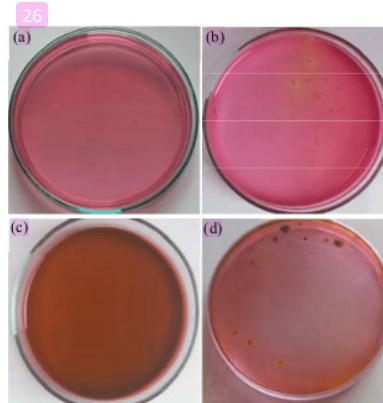


Fig. 13(a-d): MSA and EMBA control media, (a) Mannitol salt agar (MSA) media, (b) Mannitol salt agar (MSA) media+*Staphylococcus aureus* bacteria, (c) Eosin methylene blue agar (EMBA) media and (d) Eosin methylene blue agar (EMBA) media+*Escherichia coli* bacteria

Table 5: *Escherichia coli* bacteria results on biscuits combination red alga and tempeh

Sample	Colonies on LB media	Colonies on EMBA media	<i>Escherichia coli</i>
Formula 1	Turbidity occurs in the sample	Purplish pink (Coliform)	Negative
	Turbidity occurs in the sample	Purplish pink (Coliform)	Negative
	Turbidity occurs in the sample	Purplish pink (Coliform)	Negative
Formula 2	Turbidity occurs in the sample	Purplish pink (Coliform)	Negative
	Turbidity occurs in the sample	Purplish pink (Coliform)	Negative
	Turbidity occurs in the sample	Purplish pink (Coliform)	Negative
Formula 3	Turbidity occurs in the sample	Purplish pink (Coliform)	Negative
	Turbidity occurs in the sample	Purplish pink (Coliform)	Negative
	Turbidity occurs in the sample	Purplish pink (Coliform)	Negative

CONCLUSION

The conclusion of this study is that at a shelf life of 1 month, biscuit formulas 1, 2 and 3 for the ALT test obtained results do not meet the requirements based on Indonesian National Standards regarding the number of bacterial colonies contained in biscuit formulations. As for the AKK test, the results of the three biscuit formulas showed that only formula 3 met the requirements, formula 1 and formula 2 did not meet the requirements. From 3 samples of biscuit formulas that have been tested for bacterial ALT and mold/khamir, colonies with different ALT values are obtained, namely bacteria A with a value of 2.2×10^7 colonies/g, bacteria B with a value of 1.9×10^7 colonies/g and bacteria C with a value of 4.1×10^7 colonies/g. Mold/khamir A obtained a value of 7.7×10^5 colonies/g, mold/khamir B obtained a value of 5.1×10^6 colonies/g and mold/khamir C obtained a value of 1.1×10^6 colonies/g. And in the pathogenic microbial test (*Staphylococcus aureus* and *Escherichia coli*) no microbial growth was found.

SIGNIFICANCE STATEMENT

This study aims to determine the TPC value of bacteria and mold/yeast and determine the presence or absence of bacterial contamination in biscuit products. This study found that in the pathogenic microbial test (*Staphylococcus aureus* and *Escherichia coli*) there was no microbial growth in the biscuits used as samples. This study is a reference for further research related to the contamination of biscuits with microorganisms based on the shelf life of the product.

ACKNOWLEDGMENT

The authors would like to thank the Faculty of Medicine and Health Sciences, Universitas Islam Negeri Alauddin Makassar for providing facilities for this research.

REFERENCES

- Batista, A.P., A. Niccolai, I. Bursic, I. Sousa and A. Raymundo *et al.*, 2019. Microalgae as functional ingredients in savory food products: Application to wheat crackers. *Foods*, Vol. 8. 10.3390/foods8120611.
- Asta, H., 2021. Carbohydrate content: Fe fortification in Jackpoo seed waste biscuits as a functional snack for stunting patients [In Indonesian]. *Agrofood J. Pertanian Pangan*, 3: 28-35.
- Diaz-Morales, N., M. Ortega-Heras, A.M. Diez-Maté, M.L. Gonzalez-SanJose and P. Muñiz, 2022. Antimicrobial properties and volatile profile of bread and biscuits melanoidins. *Food Chem.*, Vol. 373. 10.1016/j.foodchem.2021.131648.
- Rajakaruna, S., S. Pérez-Burillo, D.L. Kramer, J.Á. Rufián-Henares and O. Paliy, 2022. Dietary melanoidins from biscuits and bread crust alter the structure and short-chain fatty acid production of human gut microbiota. *Microorganisms*, Vol. 10. 10.3390/microorganisms10071268.
- Salter, R.S., G.W. Durbin, P. Bird, K. Fisher and E. Crowley *et al.*, 2016. Validation of the peel plate™ AC for detection of total aerobic bacteria in dairy and nondairy products. *J. AOAC Int.*, 99: 143-152.
- Yang, S.C., C.H. Lin, I.A. Aljuffali and J.Y. Fang, 2017. Current pathogenic *Escherichia coli* foodborne outbreak cases and therapy development. *Arch. Microbiol.*, 199: 811-825.
- Fahani, A., R.D. Dwiyantri and A. Muhlisin, 2019. Contamination of *Bacillus cereus* in elementary school snack food. *Trop. Health Med. Res.*, 1: 56-61.
- Faridah, H.D. and S.K. Sari, 2019. Utilization of microorganism on the development of halal food based on biotechnology. *J. Halal Prod. Res.*, 2: 33-43.
- Fusco, V., D. Chieffi, F. Fanelli, A.F. Logrieco and G.S. Cho *et al.*, 2020. Microbial quality and safety of milk and milk products in the 21st century. *Comp. Rev. Food Sci. Food Saf.*, 19: 2013-2049.
- Tama, A.P., V.L. Hasna, K.A. Hermawan, M.R. Utami and L. Nurfadhila, 2023. Microbial contamination analysis methods in foods: Review article. *J. Pharm. Sci.*, 6: 586-591.

11. Corradini, M.G., 2018. Shelf life of food products: From open labeling to real-time measurements. *Annu. Rev. Food Sci. Technol.*, 9: 251-269.
12. Hainil, S., T.Y. Elfasyari and R.I. Sulisty, 2021. Identification of *Escherichia coli* in pure soy milk at the market of Jodoh Batam City. *J. Surya Medika*, 7: 25-30.
13. Kurahman, T., R. Rohama and R. Saputri, 2022. A analysis of coliform bacterial contamination and identification of *Escherichia coli* bacteria in gallon water in river lake village. *J. Pharm. Care Sci.*, 3: 76-86.
14. Imeneo, V., R. Romeo, A. Gattuso, A. de Bruno and A. Piscopo, 2021. Functionalized biscuits with bioactive ingredients obtained by citrus lemon pomace. *Foods*, Vol. 10. 10.3390/foods10102460.
15. Kusuma, I.M.W. and M.A. Hendrayana, 2017. Identification of *Escherichia coli* serotype O157 bacteria with *Sorbitol Macconkey Agar* (SMAC) media on Daluman (*Cylea berbata*) from Daluman ice Traders in Denpasar City [In Indonesian]. *E-J. Medika Udayana*, Vol. 6.
16. Nurhayati, R., R. Pratiwi, B.K. Anandito, E.R. Novita and M. Angwar, 2018. Shelf life prediction of chocomix instant chocolate beverage powder using accelerated shelf life testing (ASLT) based on critical moisture content approach. *Reaktor*, 18: 63-70.
17. Budaraga, I.K., Asnurita and Y. Novera, 2023. The quality characteristics of biscuits made with plantain and purple rice flour as substitutes for wheat flour. *Potravinarstvo Slovak J. Food Sci.*, 17: 69-81.
18. Mulyani, S., B.A. Harsojuwono and G.A.K.D. Puspawati, 2014. Potential of sour turmeric drink (*Curcuma domestica* Val.-*Tamarindus indica* L.) as an antioxidant rich drink [In Indonesian]. *Agritech: J. Fakultas Teknologi Pertanian*, 34: 65-71.
19. Richard, C., 1985. A medium for rapid and economic identification of *Escherichia coli* lactose⁺ colonies: Brilliant green-bile-lactose-tryptophan broth [In French]. *Ann. l'Institut Pasteur/Microbiol.*, 136: 249-252.
20. Seniati, Marbiah and Nurhayati, 2017. Study of confrontation test pathogenic bacteria using sowing method, casting method, and scratch method [In Indonesian]. *J. Galung Tropika*, 6: 42-48.

Syamsuri Syakri

ORIGINALITY REPORT

11%

SIMILARITY INDEX

7%

INTERNET SOURCES

7%

PUBLICATIONS

3%

STUDENT PAPERS

PRIMARY SOURCES

1	repo.unand.ac.id Internet Source	2%
2	Amran Nur, Ermalyanti Fiskia, Bambang Tjiroso. "Evaluation Profile In Vitro Release Gastroretentive High Density Tablet Theophylline Using Sodium Alginate and PVP", E3S Web of Conferences, 2021 Publication	1%
3	Submitted to Lincoln University College Student Paper	1%
4	www.mdpi.com Internet Source	1%
5	Nannan Chen, Hongliang Wang, Vic Liu, Bo Pan, Jingjing Li. "High-strength and high-conductivity Cu-Cu bonding fabricated by resistance micro-welding with amorphous Ni-P coatings and multi-pulse discharging", Scripta Materialia, 2023 Publication	<1%
6	www.researchgate.net Internet Source	<1%
7	hal.archives-ouvertes.fr	

<1 %

8 worldwidescience.org
Internet Source

<1 %

9 GINA RYAN, SHERRY ROOF, LAURIE POST, MARTIN WIEDMANN. "Evaluation of Rapid Molecular Detection Assays for Salmonella in Challenging Food Matrices at Low Inoculation Levels and Using Difficult-to-Detect Strains", Journal of Food Protection, 2015
Publication

<1 %

10 id.123dok.com
Internet Source

<1 %

11 journal.uin-alauddin.ac.id
Internet Source

<1 %

12 www.neliti.com
Internet Source

<1 %

13 "Proceedings of the Andalas International Public Health Conference 2017", BMC Public Health, 2017
Publication

<1 %

14 A Amalia, A M S Apada, R Ridwan. " Analysis of O157:H7 contamination in chicken meat sold in traditional markets in Makassar, Indonesia ", IOP Conference Series: Earth and Environmental Science, 2020
Publication

<1 %

15	ifory.id Internet Source	<1 %
16	medcraveonline.com Internet Source	<1 %
17	repository.stikesdrsoebandi.ac.id Internet Source	<1 %
18	doczz.es Internet Source	<1 %
19	www.sciencepub.net Internet Source	<1 %
20	uwspace.uwaterloo.ca Internet Source	<1 %
21	Adinda Christianti Suparno, Ahsanal Kasasiah, Devi Ratnasari. "Isolasi Escherichia coli pada Sumber Air Baku serta Uji Resistensinya Terhadap Antibiotik Ampisilin dan Seftriakson", Journal of Pharmaceutical And Sciences, 2022 Publication	<1 %
22	Asem M. Ali. "Optimizing Binary MRFs with Higher Order Cliques", Lecture Notes in Computer Science, 2008 Publication	<1 %
23	D P Putri, L E Yulianti, N Afifah. "Accelerated shelf life testing of mocatilla chip using critical moisture content approach and models of sorption Isotherms", IOP	<1 %

Conference Series: Materials Science and Engineering, 2021

Publication

-
- | | | |
|----|--|------|
| 24 | Dora Dayu Rahma Turista, Eka Puspitasari. "The Growth of Staphylococcus aureus in the blood agar plate media of sheep blood and human blood groups A, B, AB, and O", Jurnal Teknologi Laboratorium, 2019
Publication | <1 % |
| 25 | Leonardo Pantoja Munoz, Alejandra Gonzalez Baez, Deena McKinney, Hemda Garelick. "Characterisation of "flushable" and "non-flushable" commercial wet wipes using microRaman, FTIR spectroscopy and fluorescence microscopy: to flush or not to flush", Environmental Science and Pollution Research, 2018
Publication | <1 % |
| 26 | digitalarchive.worldfishcenter.org
Internet Source | <1 % |
| 27 | link.springer.com
Internet Source | <1 % |
| 28 | repository.i3l.ac.id
Internet Source | <1 % |
| 29 | s3.amazonaws.com
Internet Source | <1 % |
| 30 | K.W. Kia, I.I. Arief, C. Sumantri, C. Budiman. "Plantaricin IIA-1A5 from Lactobacillus plantarum IIA-1A5 Retards Pathogenic | <1 % |

Bacteria in Beef Meatball Stored at Room Temperature", American Journal of Food Technology, 2016

Publication

Exclude quotes Off

Exclude matches Off

Exclude bibliography On

Syamsuri Syakri

GRADEMARK REPORT

FINAL GRADE

GENERAL COMMENTS

/0

PAGE 1

PAGE 2

PAGE 3

PAGE 4

PAGE 5

PAGE 6

PAGE 7

PAGE 8

PAGE 9

PAGE 10

PAGE 11

PAGE 12
