

BUKTI KORESPONDENSI ARTIKEL

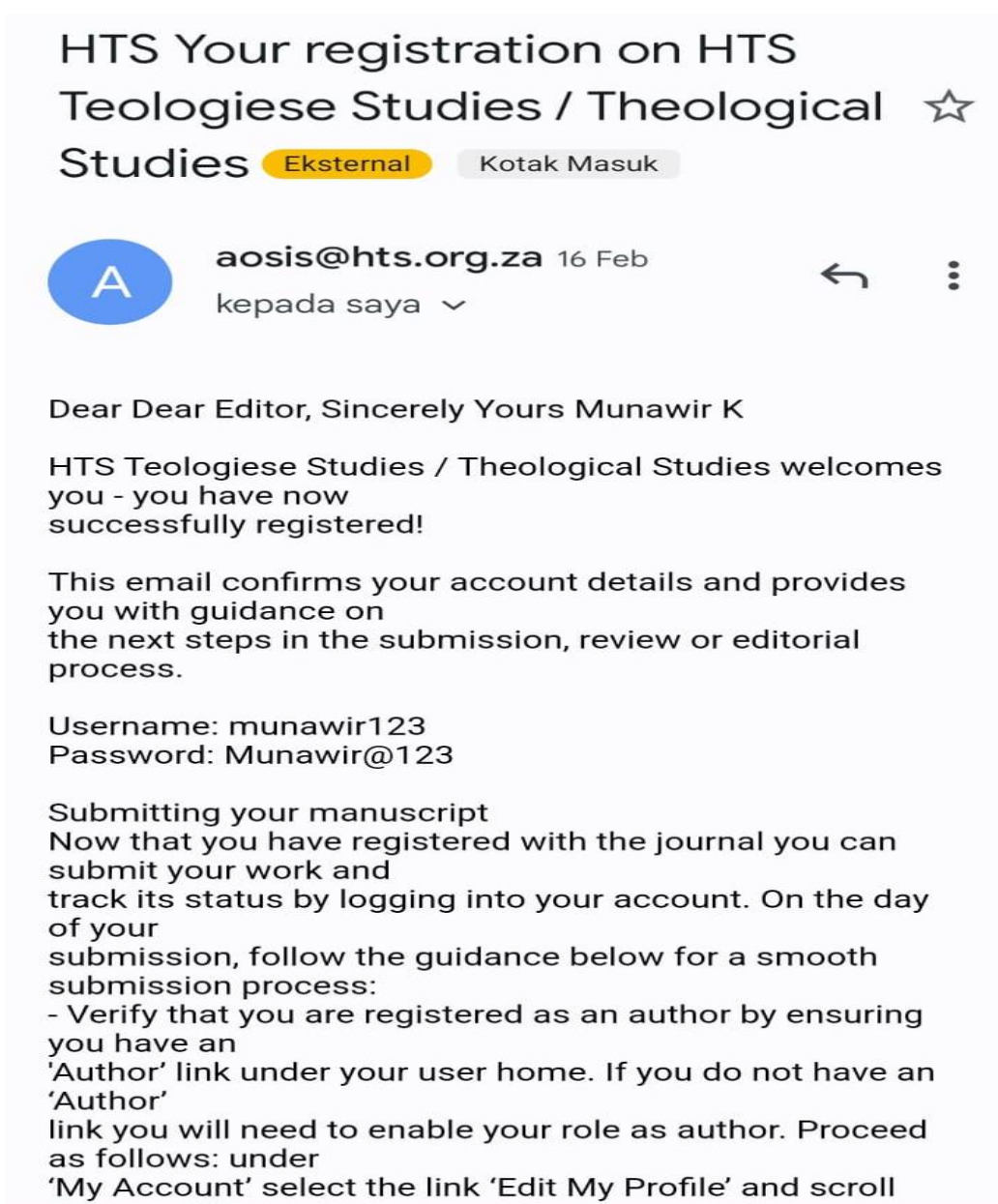
Title	:	Character Building Training Model for Young People in Islamic Universities to Strengthen Religious Moderation
Authors	:	Munawir K, Makmur Makmur, Muhammad N.A. Rasyid, Wahyuddin Naro, Syahrudin Usman, Hadi Pajarianto
Correspondence	:	Munawir K
Email	:	Munawir.k@uin-alauddin.ac.id

Kronologis Korespondensi

Tanggal/Bulan/Tahun	Proses Artikel	Keterangan
16 Pebruari 2023	Registrasi	
18 Pebruari 2023	Konfirmation and acknowledgement of receipt	Editor mengirimkan
13 Maret 2023	Unsuccessful Submission	Pemberitahuan dari editor untuk melakukan submit ulang
15 Maret 2023	Penulis melakukan submit ulang	Editor mengirimkan notiifikasi
15 Maret 2023	Manuscript at Desk Review	Pemberitahuan dari editor bahwa naskah telah masuk desk review
03 Mei 2023	Review Status Update	Editor megirimkan notifikasi bahwa naskah telah masuk peer review process on 29 Maret 2023
01 September 2023	Revision Required	Editor mengirimkan permintaan revisi, setelah naskah direview oleh 4 orang ahli
11 September 2023	Penulis mengirimkan naskah revisi	Editor memberikan feedback
13 September 2023	Accepted for publication	Pemberitahuan dari editor bahwa naskah diterima
14 September 2023	Manuscript Accepted for Publication, Sent to Editing	Pemberitahuan dari editor bahwa naskah masuk tahap editing
15 September 2023	Editor mengirimkan invoice	Penulis melakukan pembayaran biaya APC
07 Nopember 2023	Permintaan Proofreading dari Editor	Penulis Merevisi beberapa kata yang keliru
30 Nopember 2023	Pemberitahuan Online First Publication	Publish Online

Bukti Kronologis Artikel

1. 16 Pebruari 2023, Registrasi



2. 16 Pebruari 2023, Registrasi

HTS THEOLOGICAL STUDIES

HOME ► USER ► AUTHOR ► SUBMISSIONS ► #8552 ► REVIEW

#8552 REVIEW

1. SUMMARY 2. REVIEW 3. EDITING

2.1. Submission

Authors: Munswir K, Mektur Hakim, Muhammed N.A. Rasyid, Wahyuddin Naro, Syahrudin Usman, Hadi Pajanto
 Title: Character Building Training Model for Young People in Islamic Universities to Strengthen Religious Moderation
 Section: Original Research - Editor Planning Issue 1

Editor: Andries Van Aarde (Review), Madeline Coetzee (Editing), Mirielle Lewis (Review), Elzma De Bod (Review), Zinta Moku (Review)

2.2. Similarity Check

Score: 32% 29-Mar-23 11:14
 Report: VIEW REPORT

2.3. Peer Review

Round 1

Review Version	8552-98013-2-RV.DOCX	29-Mar-23
Initiated	30-Mar-23	
Last modified	01-Sep-23	
Uploaded file	Reviewer D 8552-107675-1-RV.DOCX	31-Aug-23
	Reviewer A 8552-101490-1-RV.DOCX	19-Apr-23
	Reviewer B 8552-104929-1-RV.DOCX	29-Jun-23
	Reviewer C 8552-104676-1-RV.DOCX	29-Jun-23

2.4. Editor Decision

Decision	Accept Submission	13-Sep-23
Revision Due Date	22-SEP-23	
Notify Editor	SEND EDITOR REVISION COMPLETION EMAIL	Editor/Author Email Record 13-Sep-23
Editor Version	8552-100182-1-ED.DOCX	29-Mar-23
	8552-100182-2-ED.DOCX	14-Sep-23

3. 18 Pebruari 2023, Konfirmation and acknowledgement of receipt

HTS Submission 8552
 - Confirmation and acknowledgement of receipt

Eksternal Kotak Masuk

A aosis@hts.org.za 18 Feb kepada saya

 Ref. No.: 8552
 Manuscript title: Model Character Building Training for Young People in Islamic Universities to Strengthen Religious Moderation
 Journal: HTS Theologies Studies / Theological Studies

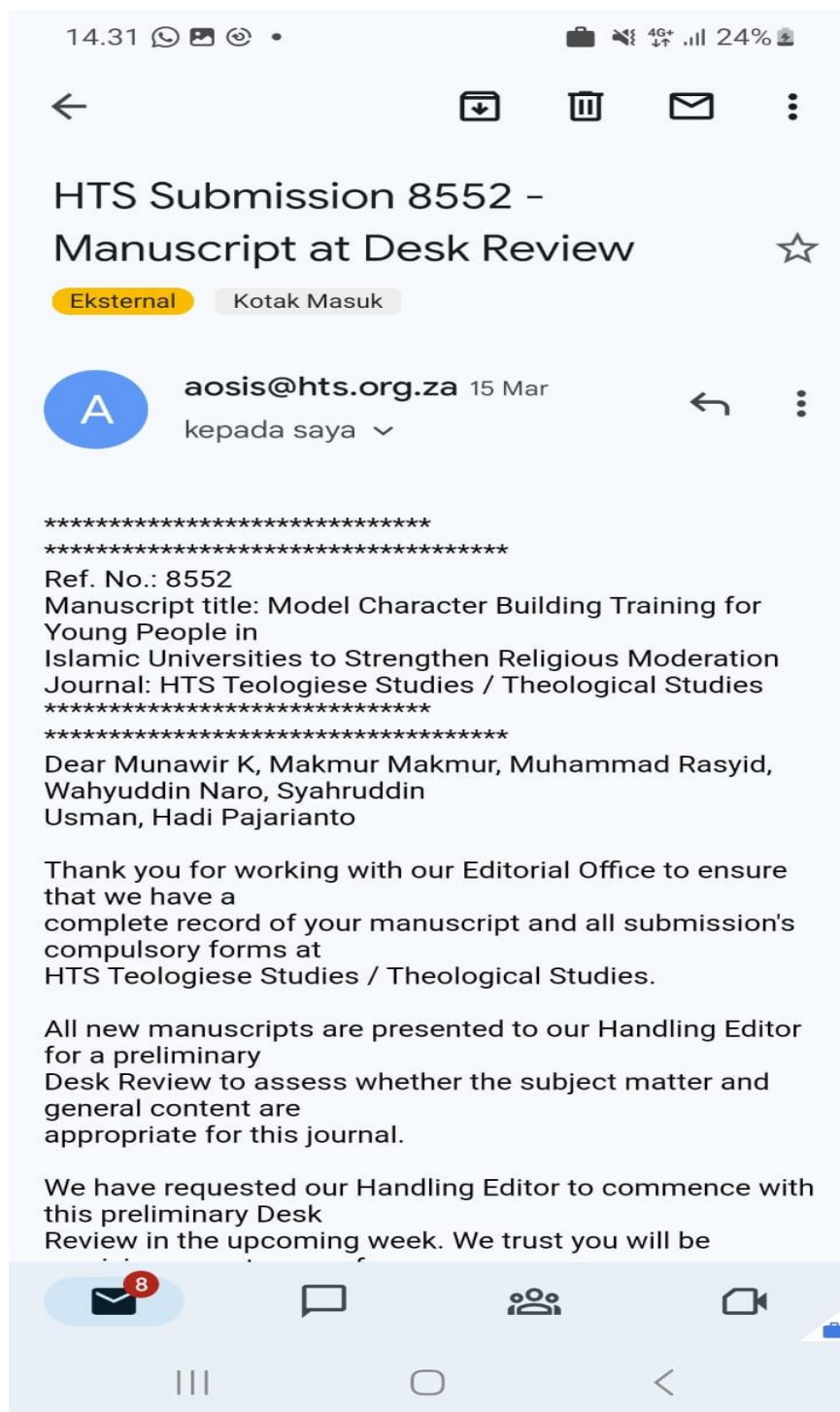
Dear Dear Editor, Sincerely Yours K

Your submission has been received by the journal and will now be processed in accordance with published timelines.

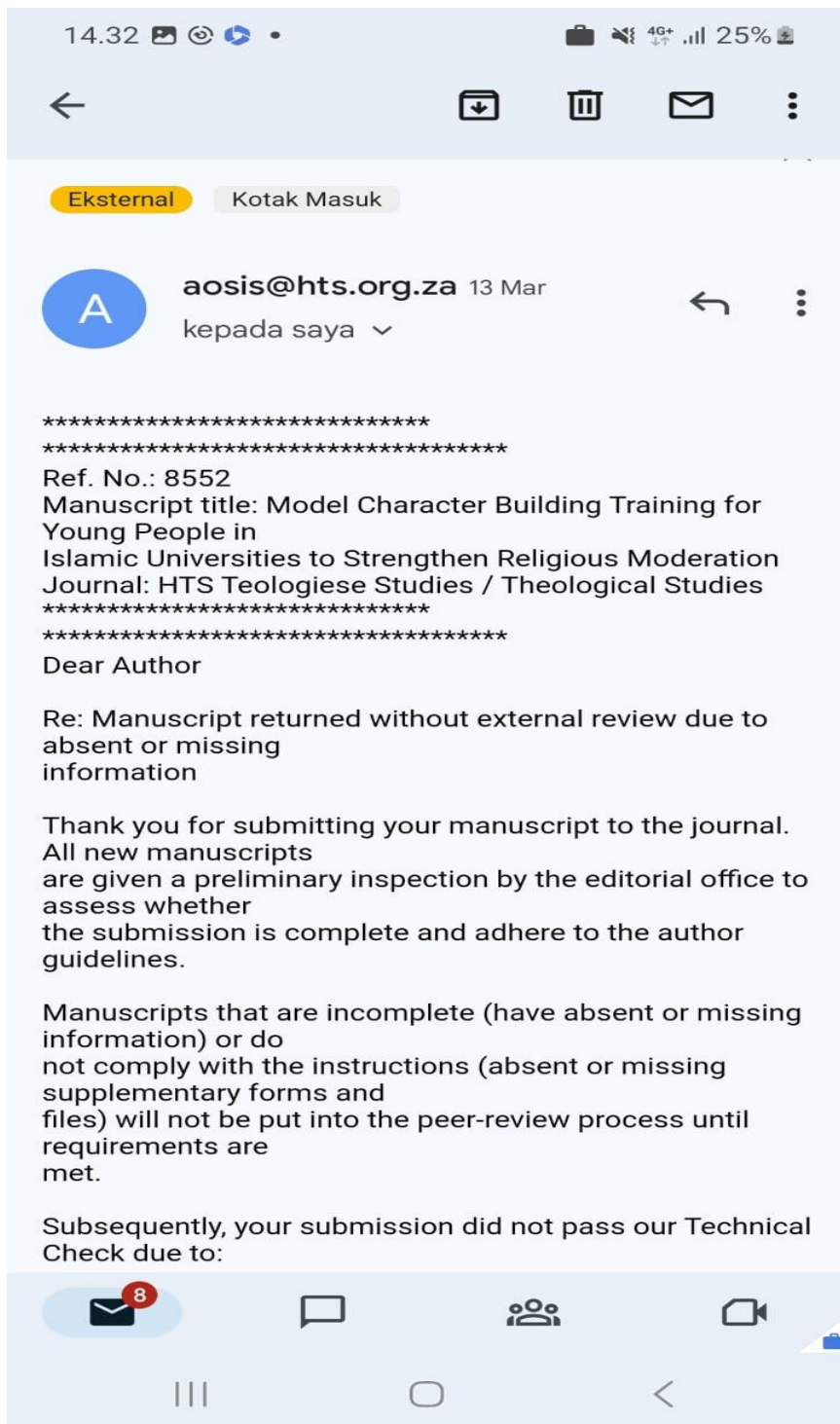
Processing time guidelines are available under the journal's 'About' section, however, please note that each submission is assessed on its individual merit and in certain circumstances processing times may differ.

You can check the status of your submission in three ways:
 - Journal Website: login to your account at <https://hts.org.za/index.php/h>

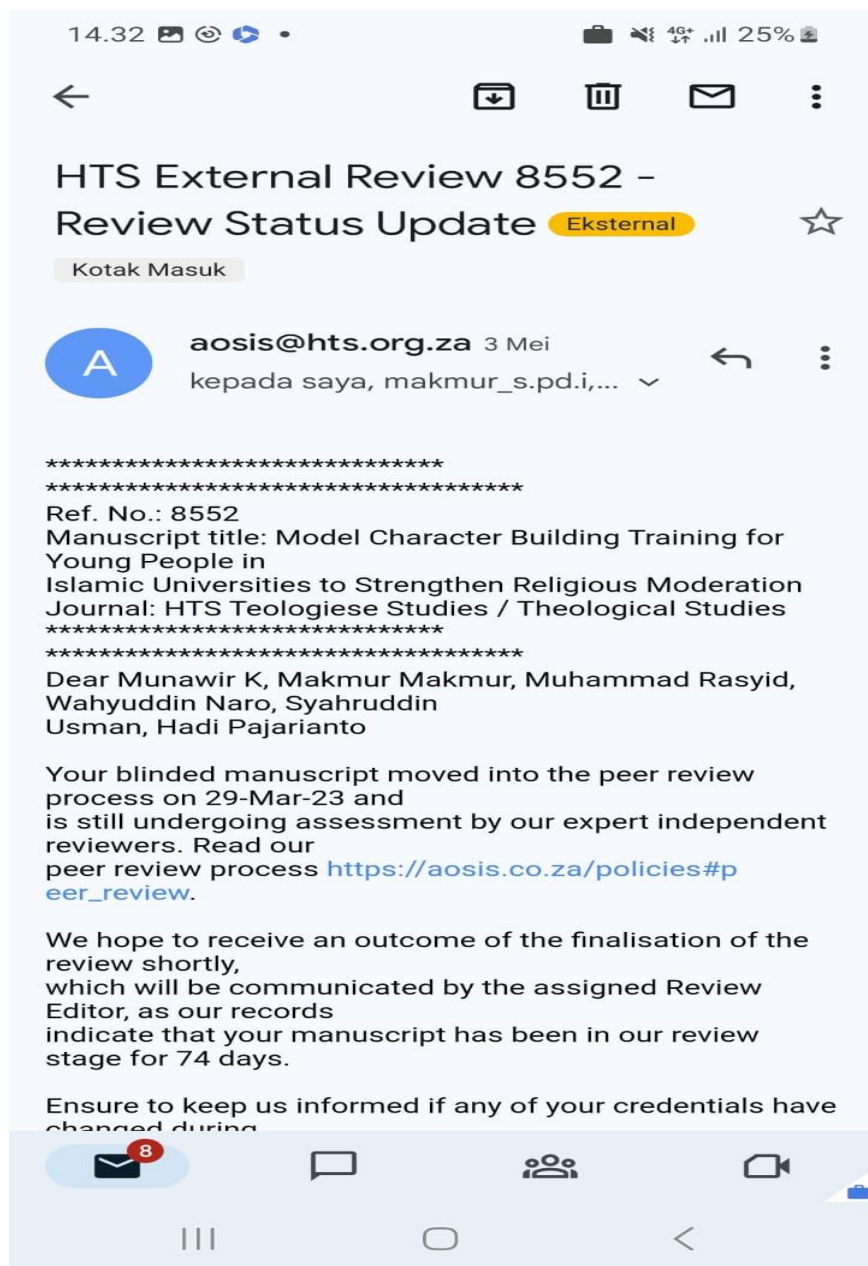
4. 13 Maret 2023, Unsuccessful Submission



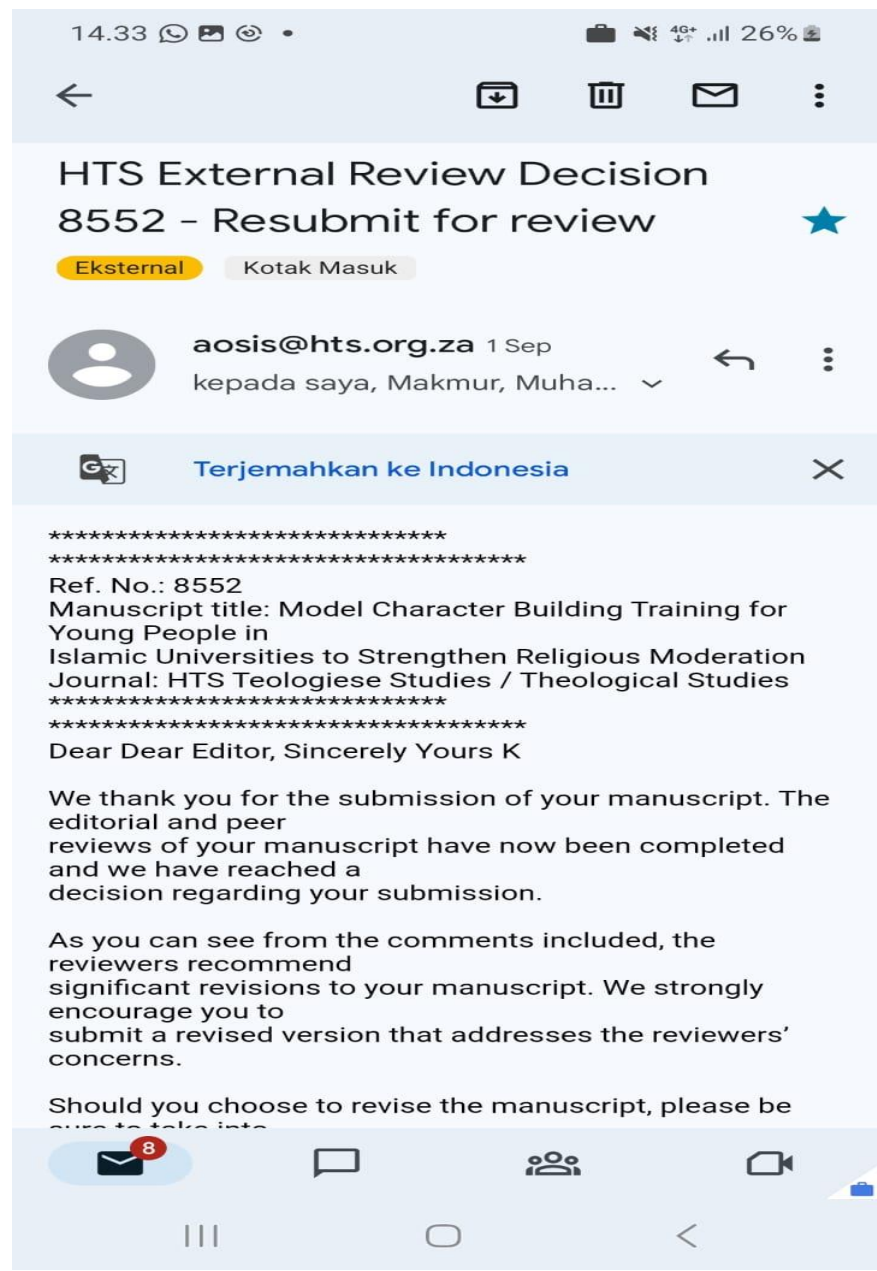
5. 15 Maret 2023, Submit Ulang/Manuscript at Desk Review

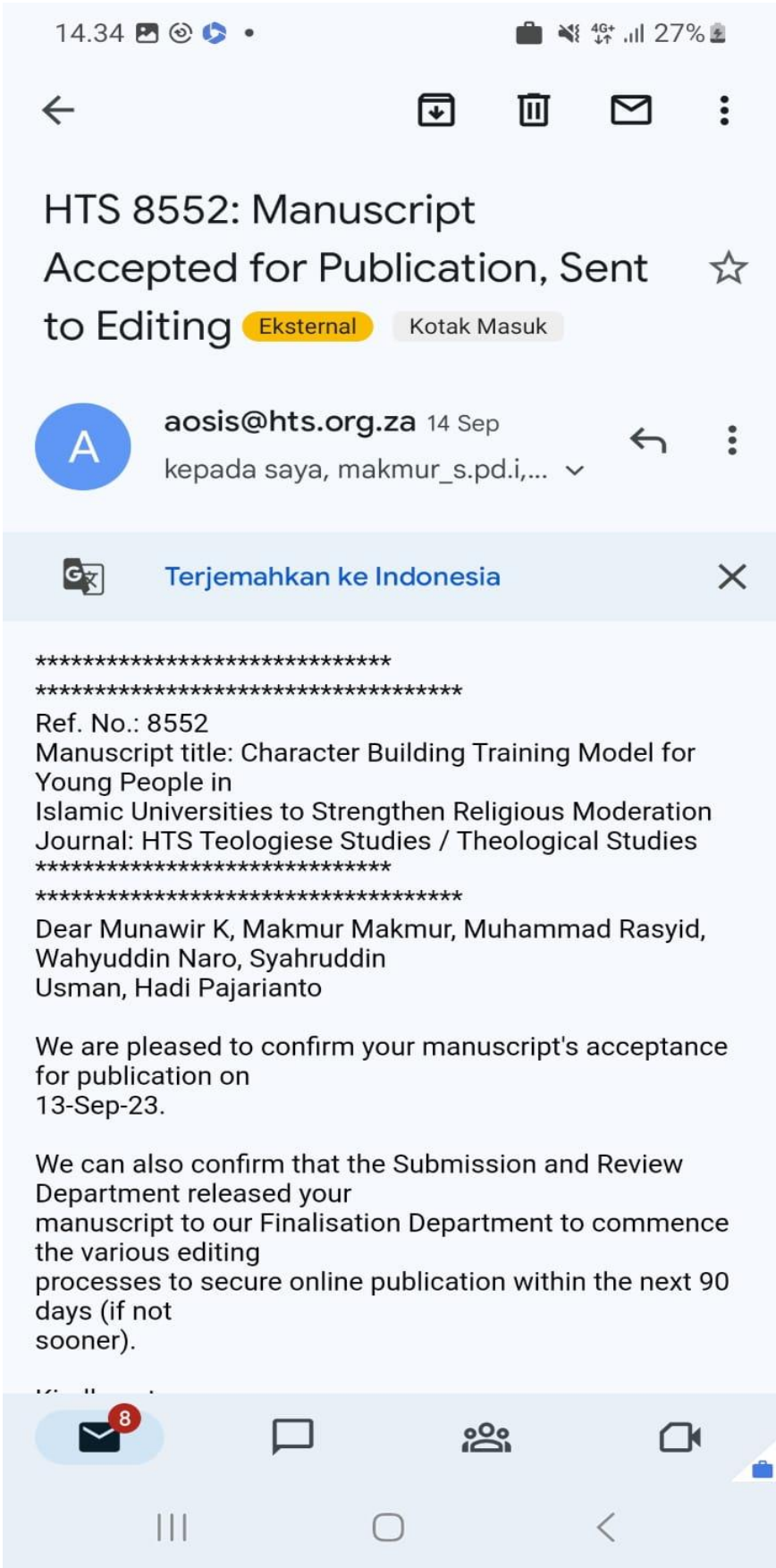


6. 03 Mei 2023, Review Status Update



01 September 2023	Revision Required	Editor mengirimkan permintaan revisi, setelah naskah direview oleh 4 orang ahli
-------------------	-------------------	---





15 September 2023

Editor mengirimkan invoice

Penulis melakukan pembayaran biaya APC

AOSIS (Pty) Ltd



1/2
 billing@aosis.co.za
 www.aosis.co.za
 VAT Registration No. 4470196177
 Business ID No. 200200201707



Tax Invoice

BILL TO
 Universitas Islam Negeri Alauddin Makassar Department of Islamic Education
 H.M. Yasin Limpo Street No. 36 Samata
 Gowa 92113
 South Sulawesi
 Indonesia

INVOICE 28679
 DATE 15/09/2023
 TERMS Net 7 days
 DUE DATE 22/09/2023

COST CENTRE
 Lembaga Penelitian dan Pengabd

ACTIVITY	DESCRIPTION	QTY	RATE	VAT	AMOUNT	ISSN
Author fees_HTS	Estimated A4 pages: 8 Research Project Number: kosongkan	8	1,605.00	Zero Rated	12,840.00	
	About the Manuscript: Manuscript Reference Number: 8552 Manuscript Title: Character Building Training Model for Young People in Islamic Universities to Strengthen Religious Moderation					
	Author List: 1.Munawir K, https://orcid.org/0000-0002-7516-6609 , Department of Islamic Education, Faculty of Tarbiyah and Teacher Training, Universitas Islam Negeri Alauddin Makassar, Gowa, Indonesia 2.Makmur Makmur, https://orcid.org/0000-0001-5592-8875 , Department of Islamic Education, Faculty of Tarbiyah and Teacher Training, Institut Agama Islam Negeri Palopo, Palopo, Indonesia 3.Muhammad N.A. Rasyid, https://orcid.org/0000-0003-2951-9183 , Department of English and Literature, Universitas Islam Negeri Alauddin Makassar, Makassar, Indonesia 4.Wahyuddin Naro, https://orcid.org/0000-0001-5391-3506 , Department of Islamic Education, Faculty of Tarbiyah and Teacher Training, Universitas Islam Negeri Alauddin Makassar, Makassar, Indonesia 5.Syahruddin Usman, https://orcid.org/0000-0003-3801-8321 , Department of Islamic Education,					

Acceptable method of payment, EFT, bank transfer, Visa & Mastercard.
 WE DO NOT ACCEPT CHEQUES AS A METHOD OF PAYMENT.

Bank charges for cash deposits & international bank transfers are for customer's account. Kind

Customs exporters code: 21330907
 Page 1 of 2

Faculty of Tarbiyah and Teacher Training,
 Universitas Islam Negeri Alauddin Makassar,
 Makassar, Indonesia

6.Hadi Pajarianto, <https://orcid.org/0000-0002-1089-8516>, Faculty of Teacher Training and Education, Universitas Muhammadiyah Palopo, Palopo, Indonesia

Manuscript Publication License:
 All articles published in this journal are licensed under the Creative Commons CC Attribution 4.0 license.

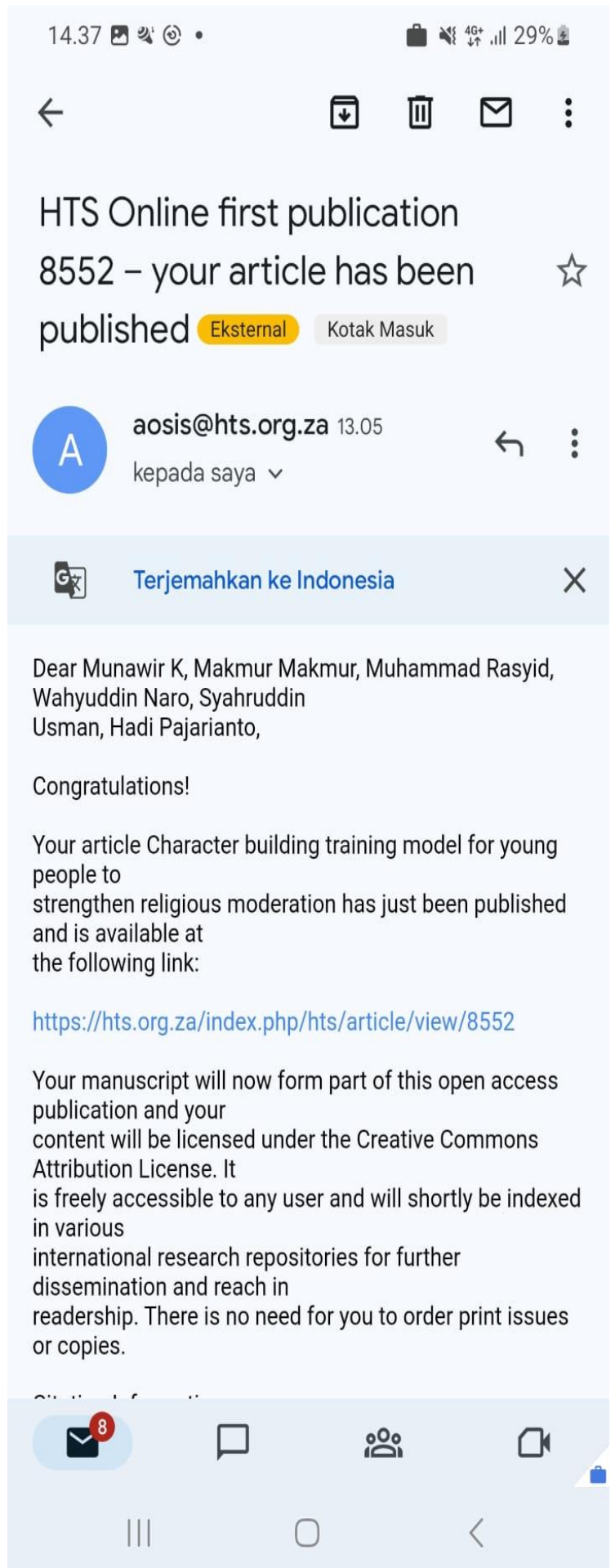
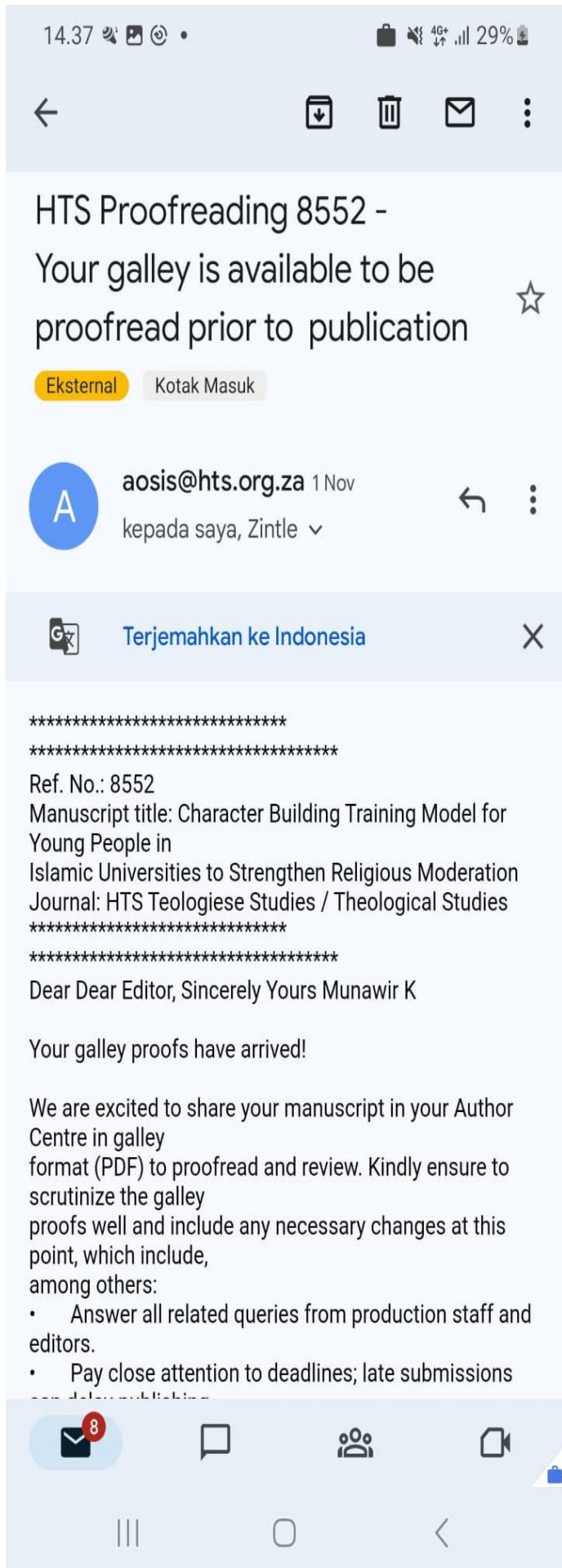
International Bank Charges	International Fee	1	250.00	Zero Rated	250.00	
Manuscript accepted for publication in HTS Teologise Studies / Theological Studies:					SUBTOTAL	13,090.00
ISSN: 0259-9422 (PRINT); ISSN: 2072-8050 (ONLINE)					TAX	0.00
Research Project Number: kosongkan					TOTAL	13,090.00
					BALANCE DUE	ZAR 13,090.00
TAX SUMMARY						
	RATE		TAX		NET	
	VAT @ 0%		0.00		13,090.00	

Forward remittance: BILLING@AOSIS.CO.ZA
 Bank details:
 Account Name: AOSIS PTY LTD
 Bank: ABSA
 Bank Address: Cnr. Oxford and Wellington Rd, Durbanville, Cape Town, 7550, South Africa
 Account Number: 9206073585
 Branch Code: 632005
 Swift Code: ABSAZAJJ

PAYPAL ADDRESS: BILLING@AOSIS.CO.ZA



07 Nopember 2023	Permintaan Proofreading dari Editor	Penulis Merevisi beberapa kata yang keliru
30 Nopember 2023	Pemberitahuan Online First Publication	Publish Online





REVIEWER INSTRUCTIONS

Take into account



CONFIDENTIALITY

Do not share the contents of this manuscript. Ensure the confidentiality of the peer review process and the proprietary rights of the authors.



CONFLICT OF INTEREST

Disclose the nature of the conflict of interest to the Editor, and decline the review request if a conflict of interest is present.



AUTHENTICITY OR INTEGRITY

Inform the Editor if you have questions about the authenticity or integrity of the reported research.



TIMEFRAME

Keep to the timeframe set out by the Editor. Ensuring a timely, productive peer-review process aids in shaping the credibility and reputation of our journal.



CRITICISM OF AUTHORS

Personal or malicious criticism of the author is not appropriate or acceptable.



YOUR REVIEW REPORT

Explain and support your judgements. Ensure that any statement, observation, derivation or argument made is accompanied by relevant details from the manuscript, and where appropriate a relevant citation. Judge the quality of the manuscript, its experimental and theoretical work, its interpretations and its exposition objectively.



CONTENT

Consider this manuscript without bias, judging it on its merits without regard to the inferred race, religion, nationality, sex or seniority of the authors.



Submit your feedback

Login to the journal platform, taking care to action steps 5-7

1

REVIEW FORM

Step 5: Select the bubble icon next to the word Review in Step 5 to complete the electronic review form. Complete the form, then click on Save and then Close. Partially completed forms cannot be saved.

2

REPORT FILES (optional)

Step 6: If preferred, you can upload multiple files in this step; ensure that these files are applicable and valid to your review of the manuscript.

Files can include:

- Your own review report.
- The manuscript with tracked changes.
- Supporting documents.

3

RECOMMENDATION (required)

Step 7: Select your recommendation and click on **Submit Review to Editor**. This will finalise your review and send it to the journal's Editor. You will not be able to access the review after completing this step.

- Send the email confirming the completion of your review.

MANUSCRIPT TO REVIEW

1 **Model Character Building Training for Young People in Islamic Universities to** 2 **Strengthen Religious Moderation**

3

4 **Abstract**

5

6 On average, the student character survey in Indonesia in 2021 resulted in a decreased index
7 number compared to last year's index results. Even though the character of young people is a
8 crucial process and determines the future of a nation, this study aims to explore the policies
9 and content of Character Building Training (CBT) and the program's impact on student
10 character. The informants of this research were 60 students and eight lecturers. Data were
11 collected through observation, in-depth interviews, and documentation from June to
12 September 2022. Data analysis was carried out manually using the Discovering Cultural
13 Themes model through three stages: data reduction, data display, and drawing conclusions
14 and verification. The study results show that CBT is carried out through cycles of CBT
15 campaigns, capacity building, and institutionalization with parenting, learning, mentoring,
16 and mentoring approaches. Its content includes integrative moderate attitudes and values,
17 skills, knowledge, insights, and reinforcement of tolerant, open, critical, caring, creative
18 behavior, respecting differences, and polite and commendable behavior. Quantitatively, CBT
19 has strengthened the character of religion, discipline, courtesy, care for the environment, and
20 love for the motherland. The most extensive and dominant strengthening of religious
21 character and love of the motherland. The implication and contribution of this research is the
22 continuation of character education for young people as an instrument to strengthen religious
23 moderation.

24 **Contribution:** This research is important theoretically and practically to contribute to the
25 formation of character building in young people in Islamic tertiary institutions. Currently,
26 character education is the main vision of Islamic tertiary institutions in Indonesia, which is
27 associated with religious moderation as one of the priorities in the national medium-term
28 development plan.

29 **Keywords:** Character, Young, Islamic University, Religious Moderation

30

Commented [A1]: Where is the place of the statistical population?

Also, include it in the Methodology

Include the Demographic information of respondents as a table in Methodology

Commented [A2]: The headers of the interview items should be included as the Appendix at the end

Introduction

Character building has become a national issue in several countries, including Indonesia. Why is that? Because character is related to the process of fostering and improving behavior as well as noble values which certainly must be imbued with Pancasila values (Harmawati & Abdulkarim, 2016). Character building is also one of the efforts to overcome moral decline, disintegration of the nation and the fading of cultural values (Mutmainah & Dewi, 2021). Character is a set of attitudes or traits that can be formed through various activities, such as the process of interaction in social life and or the process of communication and interaction with family and the environment (Sondakh et al., 2022; Susilawati et al., 2022). Thus, character will greatly determine how a nation is formed, and moves dynamically in responding to social developments both in the internal and external environment.

Character education has now become a national priority with the birth of the Strengthening Character Education policy (Ariestina, 2019), which includes the long process of the empowerment movement, namely empowering the potential of students in the process of humanizing, and the process of civilizing (Surya, 2017), towards Indonesian people who have strong and commendable characters (Permana et al., 2021). Therefore, the educational institution is a very important instrument as a socialization medium for acculturation and enculturation in the context of forming the character of the nation and state (Supa'at, 2014). Educational institutions at every level must internalize strengthening character education. Character education is surely relevant to the cultural and religious values that are developing in Indonesia.

The Center for Research and Development for Religious and Religious Education found the Student Character Index (IKPD) at the Secondary Education Level in 2019 to be 70.70. This value is a composite number of 58 indicators and 22 aspects grouped into the dimensions of religiosity, nationalism, independence, mutual cooperation, and integrity from 34 provinces in Indonesia. When viewed from this overall score, IKPD in Indonesia is in the "high" category, although it is not yet in the "very high" category (Puslitbang, 2021). Strengthening this index is supported by religiosity, nationalism, independence, mutual cooperation, and integrity. In fact, in Indonesia, the problem of deviant behavior is still a central issue that must be resolved among millennial youth through education (Zulela et al.,

Commented [A3]: The problem statement should be improved in the Introduction.

Commented [A4]: these kind of sentences are not suitable for an academic paper.

The paper should be edited by an English expert

64 2022), so that they have good character which are in accordance with the moral and ethical
65 values that apply in society (Santika, 2020), with the stages of imparting knowledge,
66 strengthening feelings, and rationalizing actions that will become a person's character
67 (Munawwaroh, 2019).

68

69 Several research results at the State Islamic University (PTKIN) show a massive
70 interest in the theme of national character. Research at PTKIN in Aceh shows that the
71 character education cycle is carried out with complete synergy between the formulation of
72 vision and mission, curriculum, rules and policies, provision of facilities and a thorough
73 evaluation (Oviana & Rijal, 2021). Meanwhile, studies at PTKIN in Sumatra and Cirebon
74 strengthen character through *Ma'had* with the implementation of a strict code of ethics for
75 lecturers, students and staff (Neliwati & Dahlan, 2022). Studies at other tertiary institutions
76 also show that character education strategies are habituation, role models, advice, rewards,
77 and sanctions (Amri, 2021). This policy is also adopted by several public tertiary institutions
78 in order to instill a moderate character in Muslim and non-Muslim students ([Author(s), in
79 press]). This previous research only focused on the implementation cycle of character
80 education in tertiary institutions, not yet touching on the impact of character education on
81 religious character, discipline, politeness, caring for the environment, and love for the
82 country. This character value is very important to know and is the main indicator in character
83 education. This character was internalized starting from preparation, core activities and the
84 educational process succeeded in increasing the character of students (Marini et al., 2019).

85

86 Several research results show that a person's character, especially religiosity, will be
87 directly related to religious tolerance (Hook et al., 2017; Krumrei-Mancuso, 2018; Leary et
88 al., 2017; Rodriguez et al., 2017; Zhang et al., 2018). From these results, it can be concluded
89 that the successful implementation of character education will strengthen religious
90 moderation (Muhtifah et al., 2021). It is highly important for young people shape their
91 character, so that in social life they will become pioneers and unifier for national unity, not
92 the opposites such as to feel self-righteous, easily disbelieve others, find it difficult to engage
93 in dialogue with other religions, and even end up causing social divisions.

94

95 There is no research that has thoroughly examined this program, so studies are needed
96 to identify and track how policies and content of character education, and what impact they

97 have on student character. Based on the results of previous research and these facts, the
98 contribution of this study will focus on; policies and content of Character Building Training,
99 and the impact of the program on student character. At PTKIN, which is the locus of this
100 research, has a program called Character Building Training (CBT) which is intended to
101 combine parenting, learning, mentoring, and consulting patterns. This activity is one of the
102 efforts to accelerate the achievement of a leading vision in scientific integration characterized
103 by local wisdom.

Commented [A5]: Include the main aim of the research here again

104 105 **Methods**

106
107 This research implemented a qualitative descriptive approach. Qualitative research has 3
108 (three) main components that are observed. Firstly, the *place* or locus of research is at
109 [information redacted to maintain the integrity of the review process]. Secondly, actors are
110 the one who are playing a certain role. In the context of this research, the actors who are the
111 object of research are all the components involved in the Character Building Training
112 program. Thirdly, activities (Tannenbaum, 1980) or program carried out by actors in ongoing
113 social situations.

114
115 Determination of data sources was carried out by purposive sampling, based on certain
116 characteristics (inclusion criteria) that have a close relationship with previously known
117 characteristics, based on the research objectives. The informants of this research were 60
118 students and 8 lecturers. Researchers conducted interviews with lecturers, and made
119 observations of student behavior based on character indicators using observation sheets.

120
121 Data were collected through observation, in-depth interviews, and documentation which were
122 conducted from June to September 2022 in the city of [information redacted to maintain the
123 integrity of the review process]. The observation used was participant observation.

124 Researchers used observation guidelines to record these activities. To maintain the validity of
125 observations, the authors use field notes (Bogdan & Biklen, 1997) or commonly called a field
126 notebook. Field notes are used to record various events related to the implementation of CBT.

127
128 Data analysis was carried out manually with the Discovering Cultural Themes model to
129 understand the typical symptoms of the previous analysis. This analysis collects the various

130 themes, cultural focus, values, and cultural symbols that exist in each domain (Spradley,
131 2016). The use of cultural and social analysis is most appropriate for evaluation and control,
132 because an understanding of the national community is one of the components on which the
133 whole process of cooperation can rely. The data were analyzed through three stages, namely,
134 data reduction, data display, and drawing conclusions and verification.

135

136 **Result and Discussion**

137

138 **Character Building Training: Policy and Content**

139

140 Character education has become a seedbed for noble religious and cultural values in
141 Indonesia, through the State Islamic University (PTKIN) as an official government institution
142 under the auspices of the ministry of religion. Technically, the implementation of character
143 education in organizations within the Ministry of Religion has been strengthened by
144 Regulation of the Minister of Religion Number 2 of 2020 concerning Implementation of
145 Strengthening Character Education which states that PPK in the type of Religious Education
146 through formal channels is carried out at the level of early childhood education, basic
147 education, secondary education , and higher education independently, in an integrated manner
148 in intra-curricular, co-curricular and extra-curricular activities. In the context of this research
149 locus, the implementation of [information redacted to maintain the integrity of the review
150 process] vision as a tertiary institution that integrates local knowledge and wisdom will be a
151 necessary process. The value system and system of norms in community culture can be
152 optimized to support this process of strengthening character education on an on-going basis
153 (Hermino & Arifin, 2020) .

154

155 If examined, various government policies to carry out character strengthening
156 programs, and carried out by cross ministries. Policies regarding character education include
157 Law Number 20 of 2003 concerning the National Education System, Republic of Indonesia
158 Law Number 12 of 2012 concerning Higher Education, Presidential Regulation Number 87
159 of 2017 concerning Strengthening Character Education, Decree of the Director General of
160 Islamic Education Number 7272 of 2019 concerning Guidelines for Implementing Religious
161 Moderation in Islamic Education, and Decree of the Director General of Islamic Education
162 Number 1595 of 2021 concerning Guidelines for the Implementation of *Ma'had Al-Jami'ah* at

163 State Islamic Religious Universities. The context for the emerge of this policy is the *Nawa*
164 *Cita* mandate contained in point 8, namely mental revolution (Ismail et al., 2020). In addition,
165 graduates of national educational institutions are required to be able to compete
166 internationally. The implication is that it becomes urgency for every domestic educational
167 institution, especially universities, to graduate Indonesian human resources of the same
168 quality as those of foreign countries. The quality of human resources in Indonesia has indeed
169 become a central issue within educational institutions since the last few decades.

170

171 Looking at these internal and external developments, [information redacted to maintain the
172 integrity of the review process] as an Islamic higher education institution has carried out a
173 transformation including formulating a vision and mission that can represent the strength of
174 this institution as an organization that maintains Islamic values and local culture, as well as
175 integrates knowledge as a differentiation with other tertiary institutions. The response is then
176 institutionalized into a CBT program that students must follow.

177

178
179
180
181
182
183
184
185
186
187
188
189
190
191
192

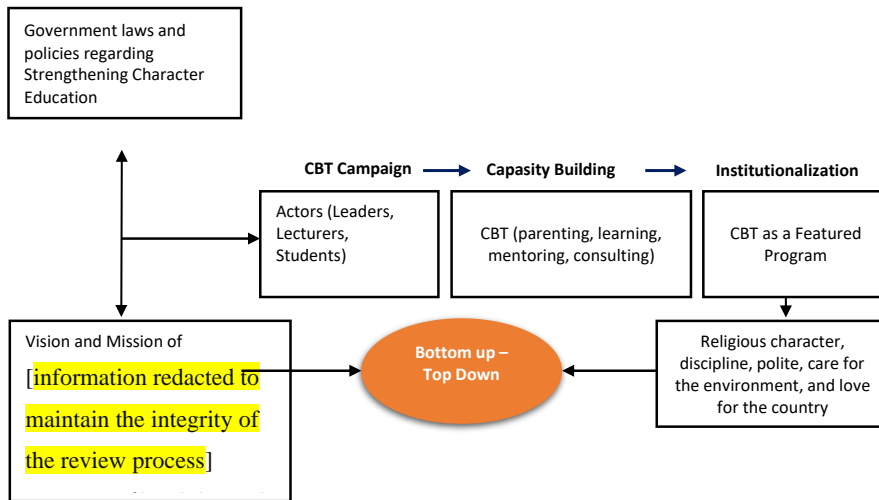


Figure 1 . CBT Model Flow in Character Formation

193

194 Figure 1 shows how the CBT flow is formed starting from various government policies
195 to strengthen character. The first process begins with a central government policy that
196 mainstreams character education which is factually capable of strengthening student character
197 (Gunawan & Gunawan, 2019; Purwanto et al., 2021). This policy then becomes the vision of
198 institutions that is eager to integrate local knowledge and wisdom. In several studies, local
199 wisdom is a noble value that strengthens the character of students and society in general
200 ([Author(s), in press]). This character contains moderate values which are characteristic of
201 the implementation of Islamic values in Indonesia.

202

203 In the second stage, it is involving actors including leaders, lecturers, and students in
204 socializing and mainstreaming CBT. The involvement of all parties in character education is
205 very important to ensure the sustainability and success of this program as the main pillar of
206 character learning in higher education (Pradana et al., 2020). The third stage is capacity
207 building which is carried out through parenting, learning, mentoring, and consulting which is
208 much needed to empower student character (Gayatri, 2020; Sulastra & Handayani, 2020). In
209 the fourth stage, the institutionalization of CBT is carried out as one of the featured programs
210 of [information redacted to maintain the integrity of the review process].

211

212 "Regarding the Character Building Training (CBT) Program, this is a policy at PTKIN
213 which we think can be useful for building student character. This activity is mandatory for
214 students to participate in and this policy is valid until now even though there are
215 modifications to the form of training with the aim of forming an Islamic character for
216 students. The goal of this CBT program is for students to have Islamic character, we hope
217 students are not only intellectually intelligent but also emotionally and spiritually intelligent
218 (AP, MH, NS, interview; 2022).

219

220 In the fifth stage, an evaluation of the enculturation of student characters is carried out which
221 are expected to grow and be emphasized in CBT activities, including religious, disciplined,
222 polite, caring for the environment, and love for the country. This character is the
223 differentiation between [information redacted to maintain the integrity of the review process]
224 and other tertiary institutions that have the same program and level of education. The process
225 of implementing CBT is carried out both bottom up and top down which are complementary

226 to each other. The CBT program is centrally supported by laws and regulations, but
227 technically it still takes into account the socio-religious characteristics of each environment.

228

229 Technically, the ministry of religion has released Decree of the Director General of
230 Islamic Education Number 7272 of 2019 concerning Guidelines for the Implementation of
231 Religious Moderation in Islamic Education (Ministry of Religion, 2019). This is what is
232 described in the form of technical policies at the level of Islamic educational institutions. The
233 contents of the Character Building Training material have been prepared based on the
234 Indonesian National Qualifications Framework (KKNI). The Learning Outcomes include
235 attitudes and values, skills, knowledge, moderate and integrative insights. The content and
236 learning outcomes are presented in table 1 as follows:

237

238

Table 1. Learning Outcomes of Character Building Training

No	Learning Outcomes	Description
1.	Attitudes and Values	These attitudes and values are reflected in the practice and implementation of the knowledge they have learned in the form of attitudes and everyday behavior, such as be tolerant, open, critical, caring, creative, respect differences, and behave politely and commendably
2.	Skills	Have the skills of being an <i>imam</i> or priest for congregational prayers, leading congregational prayers, reading the Qur'an fluently, taking care of corpses, reading the yellow book and understanding it, and being able to lead worship practices in daily life. Apart from being skilled in religion, he is also skilled in language, art, and social affairs
3.	Knowledge	Have mastery of science and knowledge and religion (Islam) in accordance with specified competencies, such as mastery and understanding of <i>tajwid</i> , jurisprudence, interpretation, creed, morals, <i>tasawuf</i> , and so on.
4.	Moderate and Integrative Insight	Have an insight into moderation in religious thought and behavior (namely tolerance, non-violence, openness or local wisdom, and national commitment) as well as having the competence to apply their knowledge, knowledge and skills in an integral (integrated) manner.

239 Source: *Ma'had al-Jami'* Curriculum of [information redacted to maintain the integrity of the
 240 review process]

241 , 2021

242

243 In table 1, it can be concluded that in terms of attitudes and values the CBT learning
244 outcomes program is tolerant, open, critical, caring, creative, respecting differences, and
245 polite and commendable behavior which is very relevant to competence in the 21st century
246 (Zubaidah, 2018) . The five main domains of 21st century skills are digital literacy, intensive
247 thinking, effective communication, high productivity and spiritual and moral values. (Osman
248 et al., 2013) was included. Temporary Griffin & Care (2014) classify 21st century skills and
249 attitudes as ways to think (knowledge, critical and creative thinking), ways to learning
250 (literacy and soft skills), and ways to learn with others (personal, social, and civic
251 responsibilities). The learning outcomes have also emphasized the insights of integrative
252 religious moderation.

253

254 Thus, CBT is a very important program in higher education institutions in Indonesia,
255 because it is related to character education which greatly determines the future of a nation.
256 Through policies from the central government and translated into tertiary institutions, this
257 program has been running according to the characteristics of their respective environments.
258 This is a good practice that has been developed by universities, but there is still a lot of
259 homework to be done to ensure that the process of cultivating character values runs and is
260 sustainable. In addition, policies that are more comprehensive and based on local wisdom are
261 urgently needed to respond to the challenges of an increasingly complex era, starting from
262 issues that threaten the integrity and future of the nation to global competition. This policy
263 will become the basis for the formulation of more concrete steps so that the seeding and
264 cultivating of the main values for the formation of the nation's character can be carried out
265 effectively and comprehensively.

266

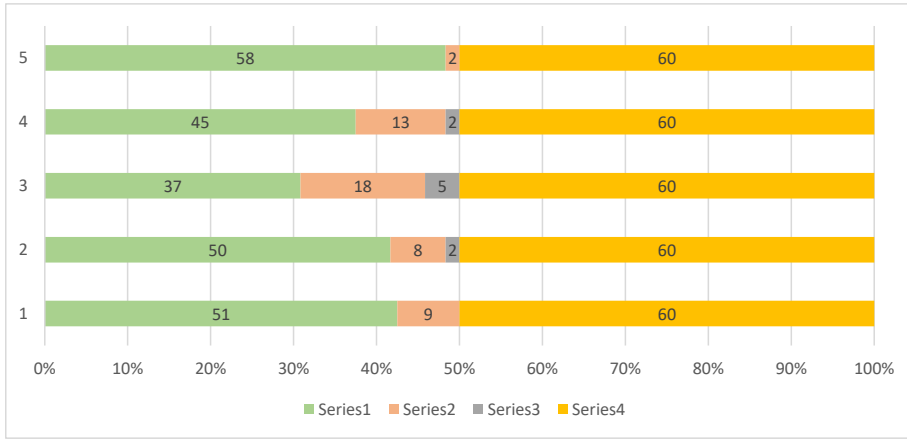
267 **Character Building Training: Impact on Students**

268

269 The character education CBT program aims to make students have good character, at
270 least there are five characters that we always teach students while they are participating in the
271 CBT program. Firstly, it is religious character. The process is to teach students to carry out
272 religious activities such as *Dhuha* prayers together. Even though, before the pandemic we
273 instilled the habit of always praying at night. Second is politeness in behavior that reflects
274 noble character. Third is discipline. Students should not arrive late. The fourth is to care for
275 the environment. We teach students to always care for the environment. The indicators are

276 students should not litter, neatly arrange shoes and sandals and park of Islamic boarding
277 schools. The fifth is to strength national values with love for the country.
278

279
280
281
282
283
284
285
286
287
288
289
290
291



Graph 1 . Results of Observation of the Character of Students Participating in CBT N

292

293 In graph 1, students who have high religiosity are 51 people (85%), in the medium
294 category 15 people (15%). In terms of discipline, 50 (83%) are in the high category, 8 people
295 (13%) are in the medium category, and 2 people (4%) are in the low category. Meanwhile, in
296 the politeness aspect, there were 37 people (62%) in the high category, 18 people (30%) in
297 the medium category, and 5 people (8%) in the low category. In terms of caring for the
298 environment, 45 people (75%) are in the high category, 13 people (22%) are in the medium
299 category, and 2 people (4%) are in the low category. Meanwhile, for the character of love for
300 the country, 58 people (96%) are in the high category, and 20 people (4%) are in the medium
301 category.

302

303 In these data, religiosity and love for the country are the characters that have the most
304 dominant values. This is supported by other research results, where Muslim student
305 respondents in this study had a high level of religiosity, namely 58.7% and around 41.3% had
306 low religiosity. Meanwhile, based on gender, women tend to have high religiosity when
307 compared to men, with a percentage of 61.1% compared to 46.9% (Suryadi & Hayat, 2021).
308 Likewise, strengthening various literacy supported by adequate religiosity has succeeded in
309 campaigning for friendly, polite and tolerant Islamic values (Kurniawati & Maemonah,
310 2021).

311 In addition, this quantitative data were strengthened by the results of the depth-
312 interviews conducted with lecturers and students regarding the impact of CBT on character
313 strengthening. The results of the interviews are presented in table 2 below:

314

315

Table 2. Findings of Character Strengthening for CBT Participants

No	Character	Findings	Data source
1.	Religious	<ul style="list-style-type: none"> The percentage of congregational prayers has increased Read the Koran regularly Reporting the memorization Active in voicing religious moderation 	Informants 2, 4, 5, 7, 8, 9, 11, 13
2.	Discipline	<ul style="list-style-type: none"> The percentage of student attendance increased Stopping activities when the call to prayer in the mosque Fulfilling guidance appointments with lecturers 	Informants 15, 16, 18, 21, 22, 24
3.	Polite	<ul style="list-style-type: none"> Say hello before speaking Students are more polite in speaking Dress neatly and politely when studying 	Informants 1, 3, 10, 14, 20
4.	Environmental care	<ul style="list-style-type: none"> Working together to clean up the environment Cleaning places of worship Dispose of trash in its place 	Informants 23, 25, 27, 30
5.	Love for country	<ul style="list-style-type: none"> Sing the national anthem National flag salute Recognizing Pancasila as the basis of the state Actively voicing moderate Islam Caring for diversity 	Informants 5, 6, 8, 10, 13, 15, 17, 20, 24

316 Source: Data of Depth-Interview

317

318 In table 2, lecturers and students provide reinforcement of previous data, that CBT has
319 an impact on strengthening student character which is implemented concretely in campus life.
320 In terms of religious character, students are more diligent in praying in congregation, reading
321 the Qur'an, and actively participating in voicing religious moderation. Likewise, the
322 discipline aspect has been strengthened with indicators of the percentage of attendance at
323 learning increasing, stopping activities at prayer times, and fulfilling promises of guidance
324 with lecturers. In the aspect of politeness, students say hello when meeting lecturers or are
325 about to start a conversation, and dress neatly. While strengthening the character of caring for
326 the environment is the activeness of students in carrying out social service activities by
327 cleaning the surrounding environment and disposing of trash in its place. In the aspect of the
328 character of loving the country, students sing the national anthem, respect the flag, recognize
329 Pancasila as the basis of the state, and strengthen Islamic moderate which is the jargon of the
330 Ministry of Religion.

331
332 These qualitative results are reinforced by other research results, which believe in the
333 strength of educational institutions as centers of excellence in preparing superior character.
334 This belief encourages everyone to be ready to face global challenges, and Indonesia will
335 become a very strong nation in all fields in 2045 or 100 years after independence (Rokhman
336 et al., 2014). In addition, the culture developed in educational institutions is able to provide
337 reinforcement for self-development (Defitrika & Mahmudah, 2021), and because cultural
338 values will always be attached to humans whenever and wherever they are (Ferdiawan &
339 Putra, 2013).

340
341 Thus, CBT can quantitatively and qualitatively empower the character of students in tertiary
342 institutions. In this case, the content of CBT material includes spiritual, academic, and
343 physical aspects. These three characteristics are a reflection of integration of religious
344 knowledge, general knowledge, skills and national insight (moderation) as the vision of
345 [information redacted to maintain the integrity of the review process]. The CBT program
346 applies integration of various kinds of knowledge and skills from theoretical (in-class) and
347 practical (daily life) aspects. This means that CBT is carried out in an integrated, interrelated
348 and mutually supportive manner. This needs to be continued, optimized, deepened, and even
349 expanded so that it is necessary to strengthen national character education. For this reason,

350 from now on, it is necessary to carry out the Character Education Strengthening Movement
351 (PPK) by heeding the principles of continuity.

352 **Conclusion**

353

354 Character education is a national policy that is contained in laws and regulations and
355 is spelled out in the vision and mission of higher education institutions. The implementation
356 cycle includes CBT campaigns, capacity building, and institutionalization involving leaders,
357 lecturers, and students with parenting, learning, mentoring, and consulting approaches. The
358 content includes attitudes and values, skills, knowledge, and moderate integrative insights, as
359 well as reinforcement of tolerant, open, critical, caring, creative behavior, respecting
360 differences, and polite and commendable behaviors. Quantitatively, CBT has emphasized the
361 character of religion, discipline, courtesy, care for the environment, and love for the country.
362 The biggest and dominant aspects are strengthening of religious character and love of
363 country. This study has limitations because it is carried out at a small and limited locus.
364 However, it can be adapted to locus that has the same characteristics. The researcher
365 recommends that further studies be continued at a broader locus, so as to have complete
366 recommendations for the continuation of character education which is very important for a
367 nation.

368

369 **Acknowledgements**

370

371 **Competing interests**

372

373 [information redacted to maintain the integrity of the review process]

374

375 **Author contributions**

376

377 [information redacted to maintain the integrity of the review process]

378

379 **Funding**

380

381 [information redacted to maintain the integrity of the review process]

382

383 **Data availability**

384

385 [information redacted to maintain the integrity of the review process]

386

387 **Disclaimer**

388

389 [information redacted to maintain the integrity of the review process]

390

391 **Ethical Considerations**

392

393 [information redacted to maintain the integrity of the review process]

394

395 **Reference**

396

397 Amri, K. (2021). Character Development in the Teaching and Learning Process at the Langsa
398 State Islamic Institute. *Al-Ikhtibar: Journal of Education* , 8 (1), 62–78.

399 Ariestina, H. (2019). Planting Tolerance Values as Strengthening Character Education in
400 Madrasah Ibtidaiyyah. *WASPADA (Journal of Educational Development Insights)* , 6
401 (2), 1–11.

402 Bogdan, R., & Biklen, SK (1997). *Qualitative research for education* . Allyn & Bacon
403 Boston, MA.

404 Defitrika, F., & Mahmudah, FN (2021). Development of life skills education as character
405 building. *International Journal of Educational Management and Innovation* , 2 (1),
406 116–135.

407 Ferdiawan, E., & Putra, WE (2013). Esq education for children character building based on
408 the philosophy of Javaness in Indonesia. *Procedia-Social and Behavioral Sciences* ,
409 106 , 1096–1102.

410 Gayathri, MS (2020). *The relationship between perceptions of father involvement in*
411 *parenting and adversity intelligence in overseas students in Yogyakarta* . University
412 of Mercu Buana Yogyakarta.

413 Griffin, P., & Care, E. (2014). *Assessment and teaching of 21st century skills: Methods and*
414 *approach* . Springer.

415 Gunawan, II, & Gunawan, I. (2019). Develop educational leadership by applying values and
416 ethics to strengthen student character. *5th International Conference on Education and*
417 *Technology (ICET 2019)* , 23–29.

418 Harmawati, Y., & Abdulkarim, A. (2016). The cultural values of the Dieng Culture Festival
419 tradition as local wisdom to build national character. *Journal of the Urban Society's*
420 *Arts* , 3 (2), 82–95.

421 Hermino, A., & Arifin, I. (2020). Contextual Character Education for Students in the Senior
422 High School. *European Journal of Educational Research* , 9 (3), 1009–1023.

423 Hook, JN, Farrell, JE, Johnson, KA, Van Tongeren, DR, Davis, DE, & Aten, JD (2017).
424 Intellectual humility and religious tolerance. *The Journal of Positive Psychology* , 12
425 (1), 29–35.

426 Ismail, S., Suhana, S., & Zakiah, QY (2020). Policy analysis of strengthening character
427 education in realizing Pancasila students in schools. *Journal of Educational*

- 428 *Management and Social Sciences* , 2 (1), 76–84.
- 429 Ministry of Religion. (2019). *Decree of the Director General of Islamic Education Number*
430 *7272 of 2019 concerning Guidelines for the Implementation of Religious Moderation*
431 *in Islamic Education* .
- 432 Krumrei-Mancuso, EJ (2018). Intellectual humility's links to religion and spirituality and the
433 role of authoritarianism. *Personality and Individual Differences* , 130 , 65–75.
434 <https://doi.org/https://doi.org/10.1016/j.paid.2018.03.037>
- 435 Kurniawati, R., & Maemonah, M. (2021). Guidance on media literacy and the mainstreaming
436 of religious moderation at PPM-PIN IAIN Surakarta. *Quality* , 9 (2), 311–334.
- 437 Leary, MR, Diebels, KJ, Davisson, EK, Jongman-Sereno, KP, Isherwood, JC, Raimi, KT,
438 Deffler, SA, & Hoyle, RH (2017). Cognitive and interpersonal features of intellectual
439 humility. *Personality and Social Psychology Bulletin* , 43 (6), 793–813.
- 440 Marini, A., Maksum, A., Satibi, O., Edwita, Yarmi, G., & Muda, I. (2019). Model of student
441 character based on character building in teaching learning process. *Universal Journal*
442 *of Educational Research* , 7 (10), 2089–2097.
443 <https://doi.org/10.13189/ujer.2019.071006>
- 444 Muhtifah, L., Prasojo, ZH, Sappe, S., & Elmansyah, E. (2021). The theology of Islamic
445 moderation education in Singkawang, Indonesia: The city of tolerance. *HTS*
446 *Theologiese Studies/Theological Studies* , 77 (4), 10.
- 447 Munawwaroh, A. (2019). Exemplary as a method of character education. *Journal of Islamic*
448 *Education Research* , 7 (2), 141.
- 449 Mutmainah, SU, & Dewi, DA (2021). Reactualization of Pancasila Values and Their
450 Implementation as Efforts to Build National Character. *Edukatif: Journal of*
451 *Educational Sciences* , 3 (2), 611–618.
- 452 Neliwati, N., & Dahlan, Z. (2022). Management Of Strengthening Character Education
453 Activities for Students at State Islamic Religious College in Indonesia (Study On
454 PTKIN In Java and Sumatra). *Islamic Education: Journal of Islamic Education* , 10
455 (02).
- 456 Osman, K., Hiong, LC, & Vebrianto, R. (2013). 21st Century biology: An interdisciplinary
457 approach of biology, technology, engineering and mathematics education. *Procedia-*
458 *Social and Behavioral Sciences* , 102 , 188–194.
- 459 Oviaana, W., & Rijal, F. (2021). The Role of Islamic Higher Education Institution in
460 Developing Students' Character Value. *AL-ISHLAH: Journal of Education* , 13 (1),

- 461 570–580.
- 462 [information redacted to maintain the integrity of the review process] .
- 463 [information redacted to maintain the integrity of the review process]
- 464 [information redacted to maintain the integrity of the review process]
- 465 [information redacted to maintain the integrity of the review process]
- 466 [information redacted to maintain the integrity of the review process]
- 467 [information redacted to maintain the integrity of the review process]
- 468 Permana, H., Fauzi, IAH, Hasanah, A., & Arifin, BS (2021). Development of a Character
469 Education Management Model in Schools. *Muntazam: Journal of Islamic Education*
470 *Management* , 2 (01).
- 471 Pradana, DA, Mahfud, M., Hermawan, C., & Susanti, HD (2020). Nationalism: Character
472 Education Orientation in Learning Development. *Budapest International Research*
473 *and Critics Institute-Journal (BIRCI-Journal) Volume* , 3 , 4026–4034.
- 474 Purwanto, MR, Mukharrom, T., & Rahmah, PJ (2021). Optimization of Student Character
475 Education through the Islamic Boarding School Program at the Islamic Boarding
476 School of the Islamic University of Indonesia. *Review of International Geographical*
477 *Education Online* , 11 (5).
- 478 Center for Research and Development. (2021). *Student character index* .
- 479 Rodriguez, D., Perez, C., Jagersand, M., & Figueroa, P. (2017). A comparison of smartphone
480 interfaces for teleoperation of robot arms. *2017 XLIII Latin American Computer*
481 *Conference (CLEI)* , 1–8. <https://doi.org/10.1109/CLEI.2017.8226383>
- 482 Rokhman, F., Hum, M., & Syaifudin, A. (2014). Character education for the golden
483 generation of 2045 (national character building for Indonesian golden years).
484 *Procedia-Social and Behavioral Sciences* , 141 , 1161–1165.
- 485 Santika, IWE (2020). Character education in online learning. *Indonesian Values and*
486 *Character Education Journal* , 3 (1), 8–19.
- 487 Sondakh, DSI, Rahmatullah, AS, Adiyono, A., Hamzah, MZ, Mediteraniainingsih, R., &
488 Kholifah, N. (2022). Integration of language, psychology, and technology and the
489 concept of independence learning in reading characters in Indonesian children's films
490 as media and learning materials in character building for elementary school students-
491 Indonesia. *Linguistics and Culture Review* , 6 (1), 70–88.
- 492 Spradley, J.P. (2016). *Participant observation* . Waveland Press.
- 493 Sulastra, MC, & Handayani, V. (2020). Parenting Based on Character Strength and Self-

- 494 Involvement in Students. *PHILANTHROPY: Journal of Psychology* , 4 (2), 143–157.
- 495 Supa'at, S. (2014). Model of Character Education Policy in Madrasas. *Journal of Islamic*
496 *Education* , 3 (1), 203–225.
- 497 Surya, YF (2017). The Use of the 21st Century Character Education Learning Model in Early
498 Childhood. *Journal of Obsession: Journal of Early Childhood Education* , 1 (1), 52–
499 61.
- 500 Suryadi, B., & Hayat, B. (2021). *Religiosity Concept, Measurement, and Implementation in*
501 *Indonesia* . Bibliosmia by Indonesia.
- 502 Susilawati, S., Aprilianti, D., & Asbari, M. (2022). The Role of Islamic Religious Education
503 in Forming the Religious Character of Students. *Journal of Information Systems and*
504 *Management (JISMA)* , 1 (1), 1–5.
- 505 Tannenbaum, N. (1980). (Spradley) Participant Observation (Book Review). *Anthropological*
506 *Quarterly* , 53 (4), 260.
- 507 Zhang, H., Hook, JN, Farrell, JE, Mosher, DK, Van Tongeren, DR, & Davis, DE (2018). The
508 effect of religious diversity on religious belonging and meaning: The role of
509 intellectual humility. *Psychology of Religion and Spirituality* , 10 (1), 72.
- 510 Zubaidah, S. (2018). Get to know 4C: Learning and Innovation Skills to Face the
511 Revolutionary Era 4.0. *2nd Science Education National Conference* , 13 (October
512 2018), 1–18.
- 513 Zulela, MS, Neolaka, A., Iasha, V., & Setiawan, B. (2022). How is the Education Character
514 Implemented? The Case Study in Indonesian Elementary School. *Journal of Educational and*
515 *Social Research* , 12 (1), 371.
- 516



REVIEWER INSTRUCTIONS

Take into account



CONFIDENTIALITY

Do not share the contents of this manuscript. Ensure the confidentiality of the peer review process and the proprietary rights of the authors.



CONFLICT OF INTEREST

Disclose the nature of the conflict of interest to the Editor, and decline the review request if a conflict of interest is present.



AUTHENTICITY OR INTEGRITY

Inform the Editor if you have questions about the authenticity or integrity of the reported research.



TIMEFRAME

Keep to the timeframe set out by the Editor. Ensuring a timely, productive peer-review process aids in shaping the credibility and reputation of our journal.



CRITICISM OF AUTHORS

Personal or malicious criticism of the author is not appropriate or acceptable.



YOUR REVIEW REPORT

Explain and support your judgements. Ensure that any statement, observation, derivation or argument made is accompanied by relevant details from the manuscript, and where appropriate a relevant citation. Judge the quality of the manuscript, its experimental and theoretical work, its interpretations and its exposition objectively.



CONTENT

Consider this manuscript without bias, judging it on its merits without regard to the inferred race, religion, nationality, sex or seniority of the authors.



Submit your feedback

Login to the journal platform, taking care to action steps 5-7

1

REVIEW FORM

Step 5: Select the bubble icon next to the word Review in Step 5 to complete the electronic review form. Complete the form, then click on Save and then Close. Partially completed forms cannot be saved.

2

REPORT FILES (optional)

Step 6: If preferred, you can upload multiple files in this step; ensure that these files are applicable and valid to your review of the manuscript.

Files can include:

- Your own review report.
- The manuscript with tracked changes.
- Supporting documents.

3

RECOMMENDATION (required)

Step 7: Select your recommendation and click on **Submit Review to Editor**. This will finalise your review and send it to the journal's Editor. You will not be able to access the review after completing this step.

- Send the email confirming the completion of your review.

MANUSCRIPT TO REVIEW

1 **Model Character Building Training for Young People in Islamic Universities to** 2 **Strengthen Religious Moderation**

3

4 **Abstract**

5

6 On average, the student character survey in Indonesia in 2021 resulted in a decreased index
7 number compared to last year's index results. Even though the character of young people is a
8 crucial process and determines the future of a nation, this study aims to explore the policies
9 and content of Character Building Training (CBT) and the program's impact on student
10 character. The informants of this research were 60 students and eight lecturers. Data were
11 collected through observation, in-depth interviews, and documentation from June to September
12 2022. Data analysis was carried out manually using the Discovering Cultural Themes model
13 through three stages: data reduction, data display, and drawing conclusions and verification.
14 The study results show that CBT is carried out through cycles of CBT campaigns, capacity
15 building, and institutionalization with parenting, learning, mentoring, and mentoring
16 approaches. Its content includes integrative moderate attitudes and values, skills, knowledge,
17 insights, and reinforcement of tolerant, open, critical, caring, creative behavior, respecting
18 differences, and polite and commendable behavior. Quantitatively, CBT has strengthened the
19 character of religion, discipline, courtesy, care for the environment, and love for the
20 motherland. The most extensive and dominant strengthening of religious character and love of
21 the motherland. The implication and contribution of this research is the continuation of
22 character education for young people as an instrument to strengthen religious moderation.

23 **Contribution:** This research is important theoretically and practically to contribute to the
24 formation of character building in young people in Islamic tertiary institutions. Currently,
25 character education is the main vision of Islamic tertiary institutions in Indonesia, which is
26 associated with religious moderation as one of the priorities in the national medium-term
27 development plan.

28 **Keywords:** Character, Young, Islamic University, Religious Moderation

29

30 Introduction

31

32 Character building has become a national issue in several countries, including Indonesia.
33 Why is that? Because character is related to the process of fostering and improving behavior
34 as well as noble values which certainly must be imbued with **Pancasila** values (Harmawati &
35 Abdulkarim, 2016). Character building is also one of the efforts to overcome moral decline,
36 disintegration of the nation and the fading of cultural values (Mutmainah & Dewi, 2021).
37 Character is a set of attitudes or traits that can be formed through various activities, such as the
38 process of interaction in social life and or the process of communication and interaction with
39 family and the environment (Sondakh et al., 2022; Susilawati et al., 2022). Thus, character will
40 greatly determine how a nation is formed, and moves dynamically in responding to social
41 developments both in the internal and external environment.

42

43 Character education has now become a national priority with the birth of the
44 Strengthening Character Education policy (Ariestina, 2019), which includes the long process
45 of the empowerment movement, namely empowering the potential of students in the process
46 of humanizing, and the process of civilizing (Surya, 2017), towards Indonesian people who
47 have strong and commendable characters (Permana et al., 2021). Therefore, the educational
48 institution is a very important instrument as a socialization medium for acculturation and
49 enculturation in the context of forming the character of the nation and state (Supa'at, 2014).
50 Educational institutions at every level must internalize strengthening character education.
51 Character education is surely relevant to the cultural and religious values that are developing
52 in Indonesia.

53

54 The Center for Research and Development for Religious and Religious Education found
55 the Student Character Index (IKPD) at the Secondary Education Level in 2019 to be 70.70.
56 This value is a composite number of 58 indicators and 22 aspects grouped into the dimensions
57 of religiosity, nationalism, independence, mutual cooperation, and integrity from 34 provinces
58 in Indonesia. When viewed from this overall score, IKPD in Indonesia is in the "high" category,
59 although it is not yet in the "very high" category (Puslitbang, 2021). Strengthening this index
60 is supported by religiosity, nationalism, independence, mutual cooperation, and integrity. In
61 fact, in Indonesia, the problem of deviant behavior is still a central issue that must be resolved
62 among millennial youth through education (Zulela et al., 2022), so that they have good

Commented [A1]: Describe what is Pancasila values???
And what is Pancasila???

63 character which are in accordance with the moral and ethical values that apply in society
64 (Santika, 2020), with the stages of imparting knowledge, strengthening feelings, and
65 rationalizing actions that will become a person's character (Munawwaroh, 2019).

66

67 Several research results at the **State Islamic University** (PTKIN) show a massive interest
68 in the theme of national character. Research at PTKIN in Aceh shows that the character
69 education cycle is carried out with complete synergy between the formulation of vision and
70 mission, curriculum, rules and policies, provision of facilities and a thorough evaluation
71 (Oviana & Rijal, 2021). Meanwhile, studies at PTKIN in Sumatra and Cirebon strengthen
72 character through *Ma'had* with the implementation of a strict code of ethics for lecturers,
73 students and staff (Neliwati & Dahlan, 2022). Studies at other tertiary institutions also show
74 that character education strategies are habituation, role models, advice, rewards, and sanctions
75 (Amri, 2021). This policy is also adopted by several public tertiary institutions in order to instill
76 a moderate character in Muslim and non-Muslim students ([Author(s), in press]). This previous
77 research only focused on the implementation cycle of character education in tertiary
78 institutions, not yet touching on the impact of character education on religious character,
79 discipline, politeness, caring for the environment, and love for the country. This character value
80 is very important to know and is the main indicator in character education. This character was
81 internalized starting from preparation, core activities and the educational process succeeded in
82 increasing the character of students (Marini et al., 2019).

83

84 Several research results show that a person's character, especially religiosity, will be
85 directly related to religious tolerance (Hook et al., 2017; Krumrei-Mancuso, 2018; Leary et al.,
86 2017; Rodriguez et al., 2017; Zhang et al., 2018). From these results, it can be concluded that
87 the successful implementation of character education will strengthen religious moderation
88 (Muhtifah et al., 2021). It is highly important for young people shape their character, so that in
89 social life they will become pioneers and unifier for national unity, not the opposites such as to
90 feel self-righteous, easily disbelieve others, find it difficult to engage in dialogue with other
91 religions, and even end up causing social divisions.

92

93 There is no research that has thoroughly examined this program, so studies are needed to
94 identify and track how policies and content of character education, and what impact they have
95 on student character. Based on the results of previous research and these facts, the contribution

Commented [A2]: Is this Indonesia???

96 of this study will focus on; policies and content of Character Building Training, and the impact
97 of the program on student character. At PTKIN, which is the locus of this research, has a
98 program called Character Building Training (CBT) which is intended to combine parenting,
99 learning, mentoring, and consulting patterns. This activity is one of the efforts to accelerate the
100 achievement of a leading vision in scientific integration characterized by local wisdom.

101

102 **Methods**

103

104 This research implemented a qualitative descriptive approach. Qualitative research has 3
105 (three) main components that are observed. Firstly, the *place* or locus of research is at
106 [information redacted to maintain the integrity of the review process]. Secondly, actors are
107 the one who are playing a certain role. In the context of this research, the actors who are the
108 object of research are all the components involved in the Character Building Training
109 program. Thirdly, activities (Tannenbaum, 1980) or program carried out by actors in ongoing
110 social situations.

111

112 Determination of data sources was carried out by purposive sampling, based on certain
113 characteristics (inclusion criteria) that have a close relationship with previously known
114 characteristics, based on the research objectives. The informants of this research were 60
115 students and 8 lecturers. Researchers conducted interviews with lecturers, and made
116 observations of student behavior based on character indicators using observation sheets.

117

118 Data were collected through observation, in-depth interviews, and documentation which were
119 conducted from June to September 2022 in the city of [information redacted to maintain the
120 integrity of the review process]. The observation used was participant observation.

121 Researchers used observation guidelines to record these activities. To maintain the validity of
122 observations, the authors use field notes (Bogdan & Biklen, 1997) or commonly called a field
123 notebook. Field notes are used to record various events related to the implementation of CBT.

124

125 Data analysis was carried out manually with the Discovering Cultural Themes model to
126 understand the typical symptoms of the previous analysis. This analysis collects the various
127 themes, cultural focus, values, and cultural symbols that exist in each domain (Spradley, 2016).

128 The use of cultural and social analysis is most appropriate for evaluation and control, because

129 an understanding of the national community is one of the components on which the whole
130 process of cooperation can rely. The data were analyzed through three stages, namely, data
131 reduction, data display, and drawing conclusions and verification.

132

133 **Result and Discussion**

134

135 **Character Building Training: Policy and Content**

136

137 Character education has become a seedbed for noble religious and cultural values in
138 Indonesia, through the State Islamic University (PTKIN) as an official government institution
139 under the auspices of the ministry of religion. Technically, the implementation of character
140 education in organizations within the Ministry of Religion has been strengthened by
141 Regulation of the Minister of Religion Number 2 of 2020 concerning Implementation of
142 Strengthening Character Education which states that PPK in the type of Religious Education
143 through formal channels is carried out at the level of early childhood education, basic
144 education, secondary education , and higher education independently, in an integrated manner
145 in intra-curricular, co-curricular and extra-curricular activities. In the context of this research
146 locus, the implementation of [information redacted to maintain the integrity of the review
147 process] vision as a tertiary institution that integrates local knowledge and wisdom will be a
148 necessary process. The value system and system of norms in community culture can be
149 optimized to support this process of strengthening character education on an on-going basis
150 (Hermino & Arifin, 2020) .

151

152 If examined, various government policies to carry out character strengthening programs,
153 and carried out by cross ministries. Policies regarding character education include Law Number
154 20 of 2003 concerning the National Education System, Republic of Indonesia Law Number 12
155 of 2012 concerning Higher Education, Presidential Regulation Number 87 of 2017 concerning
156 Strengthening Character Education, Decree of the Director General of Islamic Education
157 Number 7272 of 2019 concerning Guidelines for Implementing Religious Moderation in
158 Islamic Education, and Decree of the Director General of Islamic Education Number 1595 of
159 2021 concerning Guidelines for the Implementation of *Ma'had Al-Jami'ah* at State Islamic
160 Religious Universities. The context for the emerge of this policy is the *Nawa Cita* mandate
161 contained in point 8, namely mental revolution (Ismail et al., 2020). In addition, graduates of

162 national educational institutions are required to be able to compete internationally. The
163 implication is that it becomes urgency for every domestic educational institution, especially
164 universities, to graduate Indonesian human resources of the same quality as those of foreign
165 countries. The quality of human resources in Indonesia has indeed become a central issue
166 within educational institutions since the last few decades.

167

168 Looking at these internal and external developments, [information redacted to maintain the
169 integrity of the review process] as an Islamic higher education institution has carried out a
170 transformation including formulating a vision and mission that can represent the strength of
171 this institution as an organization that maintains Islamic values and local culture, as well as
172 integrates knowledge as a differentiation with other tertiary institutions. The response is then
173 institutionalized into a CBT program that students must follow.

174

175
176
177
178
179
180
181
182
183
184
185
186
187
188
189

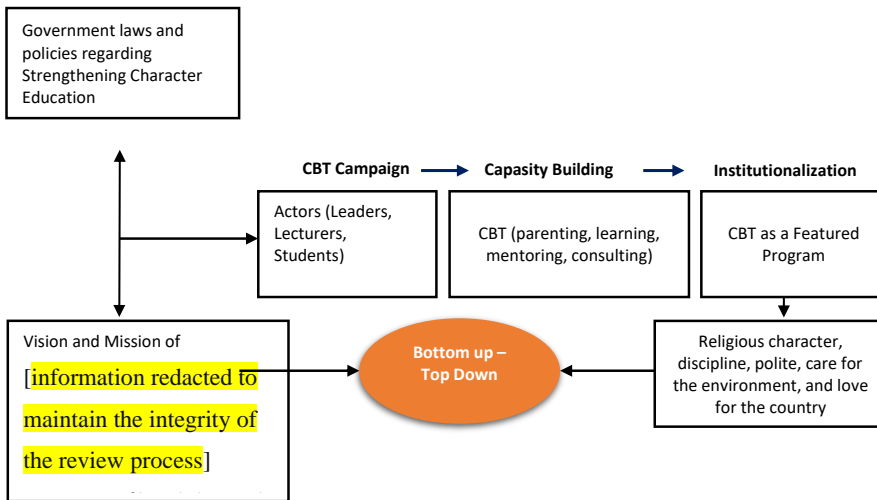


Figure 1 . CBT Model Flow in Character Formation

190

191 Figure 1 shows how the CBT flow is formed starting from various government policies
192 to strengthen character. The first process begins with a central government policy that
193 mainstreams character education which is factually capable of strengthening student character
194 (Gunawan & Gunawan, 2019; Purwanto et al., 2021). This policy then becomes the vision of
195 institutions that is eager to integrate local knowledge and wisdom. In several studies, local
196 wisdom is a noble value that strengthens the character of students and society in general
197 ([Author(s), in press]). This character contains moderate values which are characteristic of the
198 implementation of Islamic values in Indonesia.

199

200 In the second stage, it is involving actors including leaders, lecturers, and students in
201 socializing and mainstreaming CBT. The involvement of all parties in character education is
202 very important to ensure the sustainability and success of this program as the main pillar of
203 character learning in higher education (Pradana et al., 2020). The third stage is capacity
204 building which is carried out through parenting, learning, mentoring, and consulting which is
205 much needed to empower student character (Gayatri, 2020; Sulastra & Handayani, 2020). In
206 the fourth stage, the institutionalization of CBT is carried out as one of the featured programs
207 of [information redacted to maintain the integrity of the review process].

208

209 "Regarding the Character Building Training (CBT) Program, this is a policy at PTKIN which
210 we think can be useful for building student character. This activity is mandatory for students
211 to participate in and this policy is valid until now even though there are modifications to the
212 form of training with the aim of forming an Islamic character for students. The goal of this
213 CBT program is for students to have Islamic character, we hope students are not only
214 intellectually intelligent but also emotionally and spiritually intelligent (AP, MH, NS,
215 interview; 2022).

216

217 In the fifth stage, an evaluation of the enculturation of student characters is carried out which
218 are expected to grow and be emphasized in CBT activities, including religious, disciplined,
219 polite, caring for the environment, and love for the country. This character is the
220 differentiation between [information redacted to maintain the integrity of the review process]
221 and other tertiary institutions that have the same program and level of education. The process
222 of implementing CBT is carried out both bottom up and top down which are complementary

223 to each other. The CBT program is centrally supported by laws and regulations, but technically
224 it still takes into account the socio-religious characteristics of each environment.

225

226 Technically, the ministry of religion has released Decree of the Director General of
227 Islamic Education Number 7272 of 2019 concerning Guidelines for the Implementation of
228 Religious Moderation in Islamic Education (Ministry of Religion, 2019). This is what is
229 described in the form of technical policies at the level of Islamic educational institutions. The
230 contents of the Character Building Training material have been prepared based on the
231 Indonesian National Qualifications Framework (KKNI). The Learning Outcomes include
232 attitudes and values, skills, knowledge, moderate and integrative insights. The content and
233 learning outcomes are presented in table 1 as follows:

234

235

Table 1. Learning Outcomes of Character Building Training

No	Learning Outcomes	Description
1.	Attitudes and Values	These attitudes and values are reflected in the practice and implementation of the knowledge they have learned in the form of attitudes and everyday behavior, such as be tolerant, open, critical, caring, creative, respect differences, and behave politely and commendably
2.	Skills	Have the skills of being an <i>imam</i> or priest for congregational prayers, leading congregational prayers, reading the Qur'an fluently, taking care of corpses, reading the yellow book and understanding it, and being able to lead worship practices in daily life. Apart from being skilled in religion, he is also skilled in language, art, and social affairs
3.	Knowledge	Have mastery of science and knowledge and religion (Islam) in accordance with specified competencies, such as mastery and understanding of <i>tajwid</i> , jurisprudence, interpretation, creed, morals, <i>tasawuf</i> , and so on.
4.	Moderate and Integrative Insight	Have an insight into moderation in religious thought and behavior (namely tolerance, non-violence, openness or local wisdom, and national commitment) as well as having the competence to apply their knowledge, knowledge and skills in an integral (integrated) manner.

236 Source: *Ma'had al-Jami'* Curriculum of [information redacted to maintain the integrity of the
 237 review process]

238 , 2021

239

240 In table 1, it can be concluded that in terms of attitudes and values the CBT learning
241 outcomes program is tolerant, open, critical, caring, creative, respecting differences, and polite
242 and commendable behavior which is very relevant to competence in the 21st century
243 (Zubaidah, 2018) . The five main domains of 21st century skills are digital literacy, intensive
244 thinking, effective communication, high productivity and spiritual and moral values. (Osman
245 et al., 2013) was included. Temporary Griffin & Care (2014) classify 21st century skills and
246 attitudes as ways to think (knowledge, critical and creative thinking), ways to learning (literacy
247 and soft skills), and ways to learn with others (personal, social, and civic responsibilities). The
248 learning outcomes have also emphasized the insights of integrative religious moderation.
249

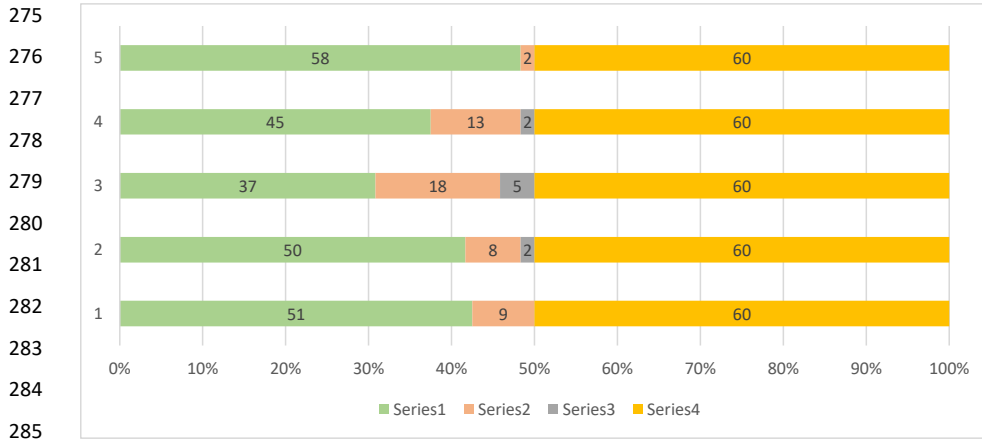
250 Thus, CBT is a very important program in higher education institutions in Indonesia,
251 because it is related to character education which greatly determines the future of a nation.
252 Through policies from the central government and translated into tertiary institutions, this
253 program has been running according to the characteristics of their respective environments.
254 This is a good practice that has been developed by universities, but there is still a lot of
255 homework to be done to ensure that the process of cultivating character values runs and is
256 sustainable. In addition, policies that are more comprehensive and based on local wisdom are
257 urgently needed to respond to the challenges of an increasingly complex era, starting from
258 issues that threaten the integrity and future of the nation to global competition. This policy will
259 become the basis for the formulation of more concrete steps so that the seeding and cultivating
260 of the main values for the formation of the nation's character can be carried out effectively and
261 comprehensively.
262

263 **Character Building Training: Impact on Students**

264

265 The character education CBT program aims to make students have good character, at
266 least there are five characters that we always teach students while they are participating in the
267 CBT program. Firstly, it is religious character. The process is to teach students to carry out
268 religious activities such as *Dhuha* prayers together. Even though, before the pandemic we
269 instilled the habit of always praying at night. Second is politeness in behavior that reflects noble
270 character. Third is discipline. Students should not arrive late. The fourth is to care for the
271 environment. We teach students to always care for the environment. The indicators are students

272 should not litter, neatly arrange shoes and sandals and park of Islamic boarding schools. The
273 fifth is to strength national values with love for the country.
274



Graph 1 . Results of Observation of the Character of Students Participating in CBT N

288

289 In graph 1, students who have high religiosity are 51 people (85%), in the medium
290 category 15 people (15%). In terms of discipline, 50 (83%) are in the high category, 8 people
291 (13%) are in the medium category, and 2 people (4%) are in the low category. Meanwhile, in
292 the politeness aspect, there were 37 people (62%) in the high category, 18 people (30%) in the
293 medium category, and 5 people (8%) in the low category. In terms of caring for the
294 environment, 45 people (75%) are in the high category, 13 people (22%) are in the medium
295 category, and 2 people (4%) are in the low category. Meanwhile, for the character of love for
296 the country, 58 people (96%) are in the high category, and 20 people (4%) are in the medium
297 category.

298

299 In these data, religiosity and love for the country are the characters that have the most
300 dominant values. This is supported by other research results, where Muslim student
301 respondents in this study had a high level of religiosity, namely 58.7% and around 41.3% had
302 low religiosity. Meanwhile, based on gender, women tend to have high religiosity when
303 compared to men, with a percentage of 61.1% compared to 46.9% (Suryadi & Hayat, 2021).
304 Likewise, strengthening various literacy supported by adequate religiosity has succeeded in
305 campaigning for friendly, polite and tolerant Islamic values (Kurniawati & Maemonah, 2021).

306 In addition, this quantitative data were strengthened by the results of the depth-interviews
307 conducted with lecturers and students regarding the impact of CBT on character strengthening.
308 The results of the interviews are presented in table 2 below:

309

310

Table 2. Findings of Character Strengthening for CBT Participants

No	Character	Findings	Data source
1.	Religious	<ul style="list-style-type: none"> The percentage of congregational prayers has increased Read the Koran regularly Reporting the memorization Active in voicing religious moderation 	Informants 2, 4, 5, 7, 8, 9, 11, 13
2.	Discipline	<ul style="list-style-type: none"> The percentage of student attendance increased Stopping activities when the call to prayer in the mosque Fulfilling guidance appointments with lecturers 	Informants 15, 16, 18, 21, 22, 24
3.	Polite	<ul style="list-style-type: none"> Say hello before speaking Students are more polite in speaking Dress neatly and politely when studying 	Informants 1, 3, 10, 14, 20
4.	Environmental care	<ul style="list-style-type: none"> Working together to clean up the environment Cleaning places of worship Dispose of trash in its place 	Informants 23, 25, 27, 30
5.	Love for country	<ul style="list-style-type: none"> Sing the national anthem National flag salute Recognizing Pancasila as the basis of the state Actively voicing moderate Islam Caring for diversity 	Informants 5, 6, 8, 10, 13, 15, 17, 20, 24

311 Source: Data of Depth-Interview

312

313 In table 2, lecturers and students provide reinforcement of previous data, that CBT has
314 an impact on strengthening student character which is implemented concretely in campus life.
315 In terms of religious character, students are more diligent in praying in congregation, reading
316 the Qur'an, and actively participating in voicing religious moderation. Likewise, the discipline
317 aspect has been strengthened with indicators of the percentage of attendance at learning
318 increasing, stopping activities at prayer times, and fulfilling promises of guidance with
319 lecturers. In the aspect of politeness, students say hello when meeting lecturers or are about to
320 start a conversation, and dress neatly. While strengthening the character of caring for the
321 environment is the activeness of students in carrying out social service activities by cleaning
322 the surrounding environment and disposing of trash in its place. In the aspect of the character
323 of loving the country, students sing the national anthem, respect the flag, recognize Pancasila
324 as the basis of the state, and strengthen Islamic moderate which is the jargon of the Ministry of
325 Religion.

326

327 These qualitative results are reinforced by other research results, which believe in the
328 strength of educational institutions as centers of excellence in preparing superior character.
329 This belief encourages everyone to be ready to face global challenges, and Indonesia will
330 become a very strong nation in all fields in 2045 or 100 years after independence (Rokhman et
331 al., 2014). In addition, the culture developed in educational institutions is able to provide
332 reinforcement for self-development (Defitrika & Mahmudah, 2021), and because cultural
333 values will always be attached to humans whenever and wherever they are (Ferdiawan & Putra,
334 2013).

335

336 Thus, CBT can quantitatively and qualitatively empower the character of students in tertiary
337 institutions. In this case, the content of CBT material includes spiritual, academic, and
338 physical aspects. These three characteristics are a reflection of integration of religious
339 knowledge, general knowledge, skills and national insight (moderation) as the vision of
340 [information redacted to maintain the integrity of the review process]. The CBT program
341 applies integration of various kinds of knowledge and skills from theoretical (in-class) and
342 practical (daily life) aspects. This means that CBT is carried out in an integrated, interrelated
343 and mutually supportive manner. This needs to be continued, optimized, deepened, and even
344 expanded so that it is necessary to strengthen national character education. For this reason,

345 from now on, it is necessary to carry out the Character Education Strengthening Movement
346 (PPK) by heeding the principles of continuity.

347 **Conclusion**

348

349 Character education is a national policy that is contained in laws and regulations and is
350 spelled out in the vision and mission of higher education institutions. The implementation cycle
351 includes CBT campaigns, capacity building, and institutionalization involving leaders,
352 lecturers, and students with parenting, learning, mentoring, and consulting approaches. The
353 content includes attitudes and values, skills, knowledge, and moderate integrative insights, as
354 well as reinforcement of tolerant, open, critical, caring, creative behavior, respecting
355 differences, and polite and commendable behaviors. Quantitatively, CBT has emphasized the
356 character of religion, discipline, courtesy, care for the environment, and love for the country.
357 The biggest and dominant aspects are strengthening of religious character and love of country.
358 This study has limitations because it is carried out at a small and limited locus. However, it can
359 be adapted to locus that has the same characteristics. The researcher recommends that further
360 studies be continued at a broader locus, so as to have complete recommendations for the
361 continuation of character education which is very important for a nation.

362

363 **Acknowledgements**

364

365 **Competing interests**

366

367 [information redacted to maintain the integrity of the review process]

368

369 **Author contributions**

370

371 [information redacted to maintain the integrity of the review process]

372

373 **Funding**

374

375 [information redacted to maintain the integrity of the review process]

376

377 **Data availability**

378

379 [information redacted to maintain the integrity of the review process]

380

381 **Disclaimer**

382

383 [information redacted to maintain the integrity of the review process]

384

385 **Ethical Considerations**

386

387 [information redacted to maintain the integrity of the review process]

388

389 Reference

390

391 Amri, K. (2021). Character Development in the Teaching and Learning Process at the Langsa
392 State Islamic Institute. *Al-Ikhtibar: Journal of Education* , 8 (1), 62–78.

393 Ariestina, H. (2019). Planting Tolerance Values as Strengthening Character Education in
394 Madrasah Ibtidaiyyah. *WASPADA (Journal of Educational Development Insights)* , 6
395 (2), 1–11.

396 Bogdan, R., & Biklen, SK (1997). *Qualitative research for education* . Allyn & Bacon Boston,
397 MA.

398 Defitrika, F., & Mahmudah, FN (2021). Development of life skills education as character
399 building. *International Journal of Educational Management and Innovation* , 2 (1),
400 116–135.

401 Ferdiawan, E., & Putra, WE (2013). Esq education for children character building based on the
402 philosophy of Javaness in Indonesia. *Procedia-Social and Behavioral Sciences* , 106 ,
403 1096–1102.

404 Gayathri, MS (2020). *The relationship between perceptions of father involvement in parenting
405 and adversity intelligence in overseas students in Yogyakarta* . University of Mercu
406 Buana Yogyakarta.

407 Griffin, P., & Care, E. (2014). *Assessment and teaching of 21st century skills: Methods and
408 approach* . Springer.

409 Gunawan, II, & Gunawan, I. (2019). Develop educational leadership by applying values and
410 ethics to strengthen student character. *5th International Conference on Education and
411 Technology (ICET 2019)* , 23–29.

412 Harmawati, Y., & Abdulkarim, A. (2016). The cultural values of the Dieng Culture Festival
413 tradition as local wisdom to build national character. *Journal of the Urban Society's
414 Arts* , 3 (2), 82–95.

415 Hermino, A., & Arifin, I. (2020). Contextual Character Education for Students in the Senior
416 High School. *European Journal of Educational Research* , 9 (3), 1009–1023.

417 Hook, JN, Farrell, JE, Johnson, KA, Van Tongeren, DR, Davis, DE, & Aten, JD (2017).
418 Intellectual humility and religious tolerance. *The Journal of Positive Psychology* , 12
419 (1), 29–35.

420 Ismail, S., Suhana, S., & Zakiah, QY (2020). Policy analysis of strengthening character
421 education in realizing Pancasila students in schools. *Journal of Educational*

- 422 *Management and Social Sciences* , 2 (1), 76–84.
- 423 Ministry of Religion. (2019). *Decree of the Director General of Islamic Education Number*
424 *7272 of 2019 concerning Guidelines for the Implementation of Religious Moderation*
425 *in Islamic Education* .
- 426 Krumrei-Mancuso, EJ (2018). Intellectual humility's links to religion and spirituality and the
427 role of authoritarianism. *Personality and Individual Differences* , 130 , 65–75.
428 <https://doi.org/https://doi.org/10.1016/j.paid.2018.03.037>
- 429 Kurniawati, R., & Maemonah, M. (2021). Guidance on media literacy and the mainstreaming
430 of religious moderation at PPM-PIN IAIN Surakarta. *Quality* , 9 (2), 311–334.
- 431 Leary, MR, Diebels, KJ, Davisson, EK, Jongman-Sereno, KP, Isherwood, JC, Raimi, KT,
432 Deffler, SA, & Hoyle, RH (2017). Cognitive and interpersonal features of intellectual
433 humility. *Personality and Social Psychology Bulletin* , 43 (6), 793–813.
- 434 Marini, A., Maksum, A., Satibi, O., Edwita, Yarmi, G., & Muda, I. (2019). Model of student
435 character based on character building in teaching learning process. *Universal Journal*
436 *of Educational Research* , 7 (10), 2089–2097.
437 <https://doi.org/10.13189/ujer.2019.071006>
- 438 Muhtifah, L., Prasojo, ZH, Sappe, S., & Elmansyah, E. (2021). The theology of Islamic
439 moderation education in Singkawang, Indonesia: The city of tolerance. *HTS*
440 *Theologiese Studies/Theological Studies* , 77 (4), 10.
- 441 Munawwaroh, A. (2019). Exemplary as a method of character education. *Journal of Islamic*
442 *Education Research* , 7 (2), 141.
- 443 Mutmainah, SU, & Dewi, DA (2021). Reactualization of Pancasila Values and Their
444 Implementation as Efforts to Build National Character. *Edukatif: Journal of*
445 *Educational Sciences* , 3 (2), 611–618.
- 446 Neliwati, N., & Dahlan, Z. (2022). Management Of Strengthening Character Education
447 Activities for Students at State Islamic Religious College in Indonesia (Study On
448 PTKIN In Java and Sumatra). *Islamic Education: Journal of Islamic Education* , 10
449 (02).
- 450 Osman, K., Hiong, LC, & Vebrianto, R. (2013). 21st Century biology: An interdisciplinary
451 approach of biology, technology, engineering and mathematics education. *Procedia-*
452 *Social and Behavioral Sciences* , 102 , 188–194.
- 453 Oviaana, W., & Rijal, F. (2021). The Role of Islamic Higher Education Institution in Developing
454 Students' Character Value. *AL-ISHLAH: Journal of Education* , 13 (1), 570–580.

- 455 [information redacted to maintain the integrity of the review process] .
456 [information redacted to maintain the integrity of the review process]
457 [information redacted to maintain the integrity of the review process]
458 [information redacted to maintain the integrity of the review process]
459 [information redacted to maintain the integrity of the review process]
460 [information redacted to maintain the integrity of the review process]
461 Permana, H., Fauzi, IAH, Hasanah, A., & Arifin, BS (2021). Development of a Character
462 Education Management Model in Schools. *Muntazam: Journal of Islamic Education*
463 *Management* , 2 (01).
464 Pradana, DA, Mahfud, M., Hermawan, C., & Susanti, HD (2020). Nationalism: Character
465 Education Orientation in Learning Development. *Budapest International Research and*
466 *Critics Institute-Journal (BIRCI-Journal) Volume* , 3 , 4026–4034.
467 Purwanto, MR, Mukharrom, T., & Rahmah, PJ (2021). Optimization of Student Character
468 Education through the Islamic Boarding School Program at the Islamic Boarding
469 School of the Islamic University of Indonesia. *Review of International Geographical*
470 *Education Online* , 11 (5).
471 Center for Research and Development. (2021). *Student character index* .
472 Rodriguez, D., Perez, C., Jagersand, M., & Figueroa, P. (2017). A comparison of smartphone
473 interfaces for teleoperation of robot arms. *2017 XLIII Latin American Computer*
474 *Conference (CLEI)* , 1–8. <https://doi.org/10.1109/CLEI.2017.8226383>
475 Rokhman, F., Hum, M., & Syaifudin, A. (2014). Character education for the golden generation
476 of 2045 (national character building for Indonesian golden years). *Procedia-Social and*
477 *Behavioral Sciences* , 141 , 1161–1165.
478 Santika, IWE (2020). Character education in online learning. *Indonesian Values and Character*
479 *Education Journal* , 3 (1), 8–19.
480 Sondakh, DSI, Rahmatullah, AS, Adiyono, A., Hamzah, MZ, Mediteraniainingsih, R., &
481 Kholifah, N. (2022). Integration of language, psychology, and technology and the
482 concept of independence learning in reading characters in Indonesian children's films
483 as media and learning materials in character building for elementary school students-
484 Indonesia. *Linguistics and Culture Review* , 6 (1), 70–88.
485 Spradley, J.P. (2016). *Participant observation* . Waveland Press.
486 Sulastra, MC, & Handayani, V. (2020). Parenting Based on Character Strength and Self-
487 Involvement in Students. *PHILANTHROPY: Journal of Psychology* , 4 (2), 143–157.

- 488 Supa'at, S. (2014). Model of Character Education Policy in Madrasas. *Journal of Islamic*
489 *Education* , 3 (1), 203–225.
- 490 Surya, YF (2017). The Use of the 21st Century Character Education Learning Model in Early
491 Childhood. *Journal of Obsession: Journal of Early Childhood Education* , 1 (1), 52–
492 61.
- 493 Suryadi, B., & Hayat, B. (2021). *Religiosity Concept, Measurement, and Implementation in*
494 *Indonesia* . Bibliosmia by Indonesia.
- 495 Susilawati, S., Aprilianti, D., & Asbari, M. (2022). The Role of Islamic Religious Education in
496 Forming the Religious Character of Students. *Journal of Information Systems and*
497 *Management (JISMA)* , 1 (1), 1–5.
- 498 Tannenbaum, N. (1980). (Spradley) Participant Observation (Book Review). *Anthropological*
499 *Quarterly* , 53 (4), 260.
- 500 Zhang, H., Hook, JN, Farrell, JE, Mosher, DK, Van Tongeren, DR, & Davis, DE (2018). The
501 effect of religious diversity on religious belonging and meaning: The role of intellectual
502 humility. *Psychology of Religion and Spirituality* , 10 (1), 72.
- 503 Zubaidah, S. (2018). Get to know 4C: Learning and Innovation Skills to Face the Revolutionary
504 Era 4.0. *2nd Science Education National Conference* , 13 (October 2018), 1–18.
- 505 Zulela, MS, Neolaka, A., Iasha, V., & Setiawan, B. (2022). How is the Education Character
506 Implemented? The Case Study in Indonesian Elementary School. *Journal of Educational and*
507 *Social Research* , 12 (1), 371.
- 508



REVIEWER INSTRUCTIONS

Take into account



CONFIDENTIALITY

Do not share the contents of this manuscript. Ensure the confidentiality of the peer review process and the proprietary rights of the authors.



CONFLICT OF INTEREST

Disclose the nature of the conflict of interest to the Editor, and decline the review request if a conflict of interest is present.



AUTHENTICITY OR INTEGRITY

Inform the Editor if you have questions about the authenticity or integrity of the reported research.



TIMEFRAME

Keep to the timeframe set out by the Editor. Ensuring a timely, productive peer-review process aids in shaping the credibility and reputation of our journal.



CRITICISM OF AUTHORS

Personal or malicious criticism of the author is not appropriate or acceptable.



YOUR REVIEW REPORT

Explain and support your judgements. Ensure that any statement, observation, derivation or argument made is accompanied by relevant details from the manuscript, and where appropriate a relevant citation. Judge the quality of the manuscript, its experimental and theoretical work, its interpretations and its exposition objectively.



CONTENT

Consider this manuscript without bias, judging it on its merits without regard to the inferred race, religion, nationality, sex or seniority of the authors.



Submit your feedback

Login to the journal platform, taking care to action steps 5-7

1

REVIEW FORM

Step 5: Select the bubble icon next to the word Review in Step 5 to complete the electronic review form. Complete the form, then click on Save and then Close. Partially completed forms cannot be saved.

2

REPORT FILES (optional)

Step 6: If preferred, you can upload multiple files in this step; ensure that these files are applicable and valid to your review of the manuscript.

Files can include:

- Your own review report.
- The manuscript with tracked changes.
- Supporting documents.

3

RECOMMENDATION (required)

Step 7: Select your recommendation and click on **Submit Review to Editor**. This will finalise your review and send it to the journal's Editor. You will not be able to access the review after completing this step.

- Send the email confirming the completion of your review.

MANUSCRIPT TO REVIEW

Model Character Building Training for Young People in Islamic Universities to Strengthen Religious Moderation

Abstract

On average, the student character survey in Indonesia in 2021 resulted in a decreased index number compared to last year's index results. Even though the character of young people is a crucial process and determines the future of a nation, this study aims to explore the policies and content of Character Building Training (CBT) and the program's impact on student character. The informants of this research were 60 students and eight lecturers. Data were collected through observation, in-depth interviews, and documentation from June to September 2022. Data analysis was carried out manually using the Discovering Cultural Themes model through three stages: data reduction, data display, and drawing conclusions and verification. The study results show that CBT is carried out through cycles of CBT campaigns, capacity building, and institutionalization with parenting, learning, mentoring, and mentoring approaches. Its content includes integrative moderate attitudes and values, skills, knowledge, insights, and reinforcement of tolerant, open, critical, caring, creative behavior, respecting differences, and polite and commendable behavior. Quantitatively, CBT has strengthened the character of religion, discipline, courtesy, care for the environment, and love for the motherland. The most extensive and dominant strengthening of religious character and love of the motherland. The implication and contribution of this research is the continuation of character education for young people as an instrument to strengthen religious moderation.

Contribution: This research is important theoretically and practically to contribute to the formation of character building in young people in Islamic tertiary institutions. Currently, character education is the main vision of Islamic tertiary institutions in Indonesia, which is associated with religious moderation as one of the priorities in the national medium-term development plan.

Keywords: Character, Young, Islamic University, Religious Moderation

Commented [A1]: The problems of this research have not been well explained
give reasons about CBT against the power of Muslim moderation

Mention the contribution of this research, please provide the limitations of this study, as well as suggestions for further research
provide confirmation whether this research, qualitative or quantitative

graph.1 give a description of each color, green, orange and yellow

30 **Introduction**

31

32 Character building has become a national issue in several countries, including Indonesia.
33 Why is that? Because character is related to the process of fostering and improving behavior
34 as well as noble values which certainly must be imbued with Pancasila values (Harmawati &
35 Abdulkarim, 2016). Character building is also one of the efforts to overcome moral decline,
36 disintegration of the nation and the fading of cultural values (Mutmainah & Dewi, 2021).
37 Character is a set of attitudes or traits that can be formed through various activities, such as the
38 process of interaction in social life and or the process of communication and interaction with
39 family and the environment (Sondakh et al., 2022; Susilawati et al., 2022). Thus, character will
40 greatly determine how a nation is formed, and moves dynamically in responding to social
41 developments both in the internal and external environment.

42

43 Character education has now become a national priority with the birth of the
44 Strengthening Character Education policy (Ariestina, 2019), which includes the long process
45 of the empowerment movement, namely empowering the potential of students in the process
46 of humanizing, and the process of civilizing (Surya, 2017), towards Indonesian people who
47 have strong and commendable characters (Permana et al., 2021). Therefore, the educational
48 institution is a very important instrument as a socialization medium for acculturation and
49 enculturation in the context of forming the character of the nation and state (Supa'at, 2014).
50 Educational institutions at every level must internalize strengthening character education.
51 Character education is surely relevant to the cultural and religious values that are developing
52 in Indonesia.

53

54 The Center for Research and Development for Religious and Religious Education found
55 the Student Character Index (IKPD) at the Secondary Education Level in 2019 to be 70.70.
56 This value is a composite number of 58 indicators and 22 aspects grouped into the dimensions
57 of religiosity, nationalism, independence, mutual cooperation, and integrity from 34 provinces
58 in Indonesia. When viewed from this overall score, IKPD in Indonesia is in the "high" category,
59 although it is not yet in the "very high" category (Puslitbang, 2021). Strengthening this index
60 is supported by religiosity, nationalism, independence, mutual cooperation, and integrity. In
61 fact, in Indonesia, the problem of deviant behavior is still a central issue that must be resolved
62 among millennial youth through education (Zulela et al., 2022), so that they have good

63 character which are in accordance with the moral and ethical values that apply in society
64 (Santika, 2020), with the stages of imparting knowledge, strengthening feelings, and
65 rationalizing actions that will become a person's character (Munawwaroh, 2019).

66

67 Several research results at the State Islamic University (PTKIN) show a massive interest
68 in the theme of national character. Research at PTKIN in Aceh shows that the character
69 education cycle is carried out with complete synergy between the formulation of vision and
70 mission, curriculum, rules and policies, provision of facilities and a thorough evaluation
71 (Oviana & Rijal, 2021). Meanwhile, studies at PTKIN in Sumatra and Cirebon strengthen
72 character through *Ma'had* with the implementation of a strict code of ethics for lecturers,
73 students and staff (Neliwati & Dahlan, 2022). Studies at other tertiary institutions also show
74 that character education strategies are habituation, role models, advice, rewards, and sanctions
75 (Amri, 2021). This policy is also adopted by several public tertiary institutions in order to instill
76 a moderate character in Muslim and non-Muslim students ([Author(s), in press]). This previous
77 research only focused on the implementation cycle of character education in tertiary
78 institutions, not yet touching on the impact of character education on religious character,
79 discipline, politeness, caring for the environment, and love for the country. This character value
80 is very important to know and is the main indicator in character education. This character was
81 internalized starting from preparation, core activities and the educational process succeeded in
82 increasing the character of students (Marini et al., 2019).

83

84 Several research results show that a person's character, especially religiosity, will be
85 directly related to religious tolerance (Hook et al., 2017; Krumrei-Mancuso, 2018; Leary et al.,
86 2017; Rodriguez et al., 2017; Zhang et al., 2018). From these results, it can be concluded that
87 the successful implementation of character education will strengthen religious moderation
88 (Muhtifah et al., 2021). It is highly important for young people shape their character, so that in
89 social life they will become pioneers and unifier for national unity, not the opposites such as to
90 feel self-righteous, easily disbelieve others, find it difficult to engage in dialogue with other
91 religions, and even end up causing social divisions.

92

93 There is no research that has thoroughly examined this program, so studies are needed to
94 identify and track how policies and content of character education, and what impact they have
95 on student character. Based on the results of previous research and these facts, the contribution

96 of this study will focus on; policies and content of Character Building Training, and the impact
97 of the program on student character. At PTKIN, which is the locus of this research, has a
98 program called Character Building Training (CBT) which is intended to combine parenting,
99 learning, mentoring, and consulting patterns. This activity is one of the efforts to accelerate the
100 achievement of a leading vision in scientific integration characterized by local wisdom.

101

102 **Methods**

103

104 This research implemented a qualitative descriptive approach. Qualitative research has 3
105 (three) main components that are observed. Firstly, the *place* or locus of research is at
106 [information redacted to maintain the integrity of the review process]. Secondly, actors are
107 the one who are playing a certain role. In the context of this research, the actors who are the
108 object of research are all the components involved in the Character Building Training
109 program. Thirdly, activities (Tannenbaum, 1980) or program carried out by actors in ongoing
110 social situations.

111

112 Determination of data sources was carried out by purposive sampling, based on certain
113 characteristics (inclusion criteria) that have a close relationship with previously known
114 characteristics, based on the research objectives. The informants of this research were 60
115 students and 8 lecturers. Researchers conducted interviews with lecturers, and made
116 observations of student behavior based on character indicators using observation sheets.

117

118 Data were collected through observation, in-depth interviews, and documentation which were
119 conducted from June to September 2022 in the city of [information redacted to maintain the
120 integrity of the review process]. The observation used was participant observation.

121 Researchers used observation guidelines to record these activities. To maintain the validity of
122 observations, the authors use field notes (Bogdan & Biklen, 1997) or commonly called a field
123 notebook. Field notes are used to record various events related to the implementation of CBT.

124

125 Data analysis was carried out manually with the Discovering Cultural Themes model to
126 understand the typical symptoms of the previous analysis. This analysis collects the various
127 themes, cultural focus, values, and cultural symbols that exist in each domain (Spradley, 2016).

128 The use of cultural and social analysis is most appropriate for evaluation and control, because

129 an understanding of the national community is one of the components on which the whole
130 process of cooperation can rely. The data were analyzed through three stages, namely, data
131 reduction, data display, and drawing conclusions and verification.

132

133 **Result and Discussion**

134

135 **Character Building Training: Policy and Content**

136

137 Character education has become a seedbed for noble religious and cultural values in
138 Indonesia, through the State Islamic University (PTKIN) as an official government institution
139 under the auspices of the ministry of religion. Technically, the implementation of character
140 education in organizations within the Ministry of Religion has been strengthened by
141 Regulation of the Minister of Religion Number 2 of 2020 concerning Implementation of
142 Strengthening Character Education which states that PPK in the type of Religious Education
143 through formal channels is carried out at the level of early childhood education, basic
144 education, secondary education , and higher education independently, in an integrated manner
145 in intra-curricular, co-curricular and extra-curricular activities. In the context of this research
146 locus, the implementation of [information redacted to maintain the integrity of the review
147 process] vision as a tertiary institution that integrates local knowledge and wisdom will be a
148 necessary process. The value system and system of norms in community culture can be
149 optimized to support this process of strengthening character education on an on-going basis
150 (Hermino & Arifin, 2020) .

151

152 If examined, various government policies to carry out character strengthening programs,
153 and carried out by cross ministries. Policies regarding character education include Law Number
154 20 of 2003 concerning the National Education System, Republic of Indonesia Law Number 12
155 of 2012 concerning Higher Education, Presidential Regulation Number 87 of 2017 concerning
156 Strengthening Character Education, Decree of the Director General of Islamic Education
157 Number 7272 of 2019 concerning Guidelines for Implementing Religious Moderation in
158 Islamic Education, and Decree of the Director General of Islamic Education Number 1595 of
159 2021 concerning Guidelines for the Implementation of *Ma'had Al-Jami'ah* at State Islamic
160 Religious Universities. The context for the emerge of this policy is the *Nawa Cita* mandate
161 contained in point 8, namely mental revolution (Ismail et al., 2020). In addition, graduates of

162 national educational institutions are required to be able to compete internationally. The
163 implication is that it becomes urgency for every domestic educational institution, especially
164 universities, to graduate Indonesian human resources of the same quality as those of foreign
165 countries. The quality of human resources in Indonesia has indeed become a central issue
166 within educational institutions since the last few decades.

167

168 Looking at these internal and external developments, [information redacted to maintain the
169 integrity of the review process] as an Islamic higher education institution has carried out a
170 transformation including formulating a vision and mission that can represent the strength of
171 this institution as an organization that maintains Islamic values and local culture, as well as
172 integrates knowledge as a differentiation with other tertiary institutions. The response is then
173 institutionalized into a CBT program that students must follow.

174

175
176
177
178
179
180
181
182
183
184
185
186
187
188
189

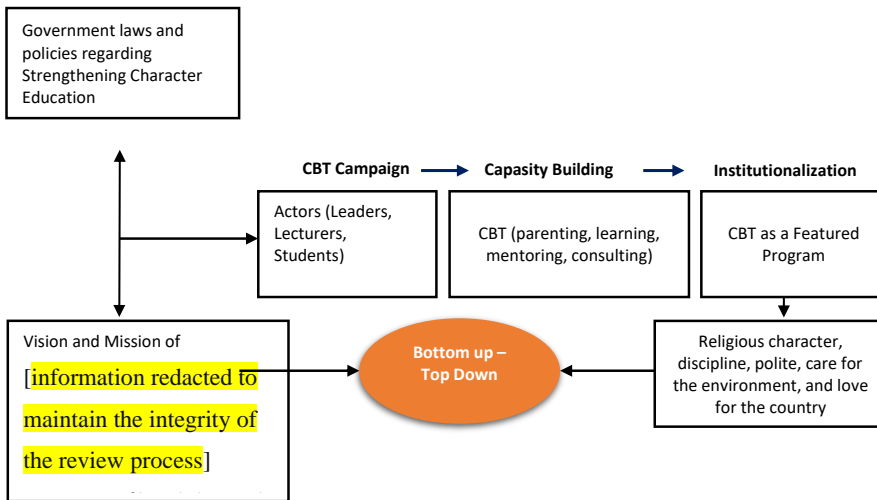


Figure 1 . CBT Model Flow in Character Formation

190

191 Figure 1 shows how the CBT flow is formed starting from various government policies
192 to strengthen character. The first process begins with a central government policy that
193 mainstreams character education which is factually capable of strengthening student character
194 (Gunawan & Gunawan, 2019; Purwanto et al., 2021). This policy then becomes the vision of
195 institutions that is eager to integrate local knowledge and wisdom. In several studies, local
196 wisdom is a noble value that strengthens the character of students and society in general
197 ([Author(s), in press]). This character contains moderate values which are characteristic of the
198 implementation of Islamic values in Indonesia.

199

200 In the second stage, it is involving actors including leaders, lecturers, and students in
201 socializing and mainstreaming CBT. The involvement of all parties in character education is
202 very important to ensure the sustainability and success of this program as the main pillar of
203 character learning in higher education (Pradana et al., 2020). The third stage is capacity
204 building which is carried out through parenting, learning, mentoring, and consulting which is
205 much needed to empower student character (Gayatri, 2020; Sulastra & Handayani, 2020). In
206 the fourth stage, the institutionalization of CBT is carried out as one of the featured programs
207 of [information redacted to maintain the integrity of the review process].

208

209 "Regarding the Character Building Training (CBT) Program, this is a policy at PTKIN which
210 we think can be useful for building student character. This activity is mandatory for students
211 to participate in and this policy is valid until now even though there are modifications to the
212 form of training with the aim of forming an Islamic character for students. The goal of this
213 CBT program is for students to have Islamic character, we hope students are not only
214 intellectually intelligent but also emotionally and spiritually intelligent (AP, MH, NS,
215 interview; 2022).

216

217 In the fifth stage, an evaluation of the enculturation of student characters is carried out which
218 are expected to grow and be emphasized in CBT activities, including religious, disciplined,
219 polite, caring for the environment, and love for the country. This character is the
220 differentiation between [information redacted to maintain the integrity of the review process]
221 and other tertiary institutions that have the same program and level of education. The process
222 of implementing CBT is carried out both bottom up and top down which are complementary

223 to each other. The CBT program is centrally supported by laws and regulations, but technically
224 it still takes into account the socio-religious characteristics of each environment.

225

226 Technically, the ministry of religion has released Decree of the Director General of
227 Islamic Education Number 7272 of 2019 concerning Guidelines for the Implementation of
228 Religious Moderation in Islamic Education (Ministry of Religion, 2019). This is what is
229 described in the form of technical policies at the level of Islamic educational institutions. The
230 contents of the Character Building Training material have been prepared based on the
231 Indonesian National Qualifications Framework (KKNI). The Learning Outcomes include
232 attitudes and values, skills, knowledge, moderate and integrative insights. The content and
233 learning outcomes are presented in table 1 as follows:

234

235

Table 1. Learning Outcomes of Character Building Training

No	Learning Outcomes	Description
1.	Attitudes and Values	These attitudes and values are reflected in the practice and implementation of the knowledge they have learned in the form of attitudes and everyday behavior, such as be tolerant, open, critical, caring, creative, respect differences, and behave politely and commendably
2.	Skills	Have the skills of being an <i>imam</i> or priest for congregational prayers, leading congregational prayers, reading the Qur'an fluently, taking care of corpses, reading the yellow book and understanding it, and being able to lead worship practices in daily life. Apart from being skilled in religion, he is also skilled in language, art, and social affairs
3.	Knowledge	Have mastery of science and knowledge and religion (Islam) in accordance with specified competencies, such as mastery and understanding of <i>tajwid</i> , jurisprudence, interpretation, creed, morals, <i>tasawuf</i> , and so on.
4.	Moderate and Integrative Insight	Have an insight into moderation in religious thought and behavior (namely tolerance, non-violence, openness or local wisdom, and national commitment) as well as having the competence to apply their knowledge, knowledge and skills in an integral (integrated) manner.

236 Source: *Ma'had al-Jami'* Curriculum of [information redacted to maintain the integrity of the
 237 review process]

238 , 2021

239

240 In table 1, it can be concluded that in terms of attitudes and values the CBT learning
241 outcomes program is tolerant, open, critical, caring, creative, respecting differences, and polite
242 and commendable behavior which is very relevant to competence in the 21st century
243 (Zubaidah, 2018) . The five main domains of 21st century skills are digital literacy, intensive
244 thinking, effective communication, high productivity and spiritual and moral values. (Osman
245 et al., 2013) was included. Temporary Griffin & Care (2014) classify 21st century skills and
246 attitudes as ways to think (knowledge, critical and creative thinking), ways to learning (literacy
247 and soft skills), and ways to learn with others (personal, social, and civic responsibilities). The
248 learning outcomes have also emphasized the insights of integrative religious moderation.

249

250 Thus, CBT is a very important program in higher education institutions in Indonesia,
251 because it is related to character education which greatly determines the future of a nation.
252 Through policies from the central government and translated into tertiary institutions, this
253 program has been running according to the characteristics of their respective environments.
254 This is a good practice that has been developed by universities, but there is still a lot of
255 homework to be done to ensure that the process of cultivating character values runs and is
256 sustainable. In addition, policies that are more comprehensive and based on local wisdom are
257 urgently needed to respond to the challenges of an increasingly complex era, starting from
258 issues that threaten the integrity and future of the nation to global competition. This policy will
259 become the basis for the formulation of more concrete steps so that the seeding and cultivating
260 of the main values for the formation of the nation's character can be carried out effectively and
261 comprehensively.

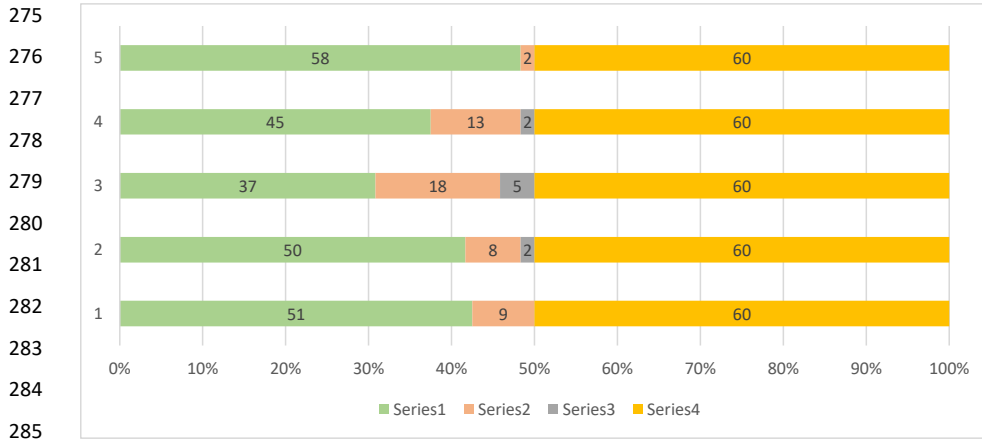
262

263 **Character Building Training: Impact on Students**

264

265 The character education CBT program aims to make students have good character, at
266 least there are five characters that we always teach students while they are participating in the
267 CBT program. Firstly, it is religious character. The process is to teach students to carry out
268 religious activities such as *Dhuha* prayers together. Even though, before the pandemic we
269 instilled the habit of always praying at night. Second is politeness in behavior that reflects noble
270 character. Third is discipline. Students should not arrive late. The fourth is to care for the
271 environment. We teach students to always care for the environment. The indicators are students

272 should not litter, neatly arrange shoes and sandals and park of Islamic boarding schools. The
273 fifth is to strength national values with love for the country.
274



Graph 1 . Results of Observation of the Character of Students Participating in CBT N

288

289 In graph 1, students who have high religiosity are 51 people (85%), in the medium
290 category 15 people (15%). In terms of discipline, 50 (83%) are in the high category, 8 people
291 (13%) are in the medium category, and 2 people (4%) are in the low category. Meanwhile, in
292 the politeness aspect, there were 37 people (62%) in the high category, 18 people (30%) in the
293 medium category, and 5 people (8%) in the low category. In terms of caring for the
294 environment, 45 people (75%) are in the high category, 13 people (22%) are in the medium
295 category, and 2 people (4%) are in the low category. Meanwhile, for the character of love for
296 the country, 58 people (96%) are in the high category, and 20 people (4%) are in the medium
297 category.

298

299 In these data, religiosity and love for the country are the characters that have the most
300 dominant values. This is supported by other research results, where Muslim student
301 respondents in this study had a high level of religiosity, namely 58.7% and around 41.3% had
302 low religiosity. Meanwhile, based on gender, women tend to have high religiosity when
303 compared to men, with a percentage of 61.1% compared to 46.9% (Suryadi & Hayat, 2021).
304 Likewise, strengthening various literacy supported by adequate religiosity has succeeded in
305 campaigning for friendly, polite and tolerant Islamic values (Kurniawati & Maemonah, 2021).

306 In addition, this quantitative data were strengthened by the results of the depth-interviews
307 conducted with lecturers and students regarding the impact of CBT on character strengthening.
308 The results of the interviews are presented in table 2 below:

309

310

Table 2. Findings of Character Strengthening for CBT Participants

No	Character	Findings	Data source
1.	Religious	<ul style="list-style-type: none"> The percentage of congregational prayers has increased Read the Koran regularly Reporting the memorization Active in voicing religious moderation 	Informants 2, 4, 5, 7, 8, 9, 11, 13
2.	Discipline	<ul style="list-style-type: none"> The percentage of student attendance increased Stopping activities when the call to prayer in the mosque Fulfilling guidance appointments with lecturers 	Informants 15, 16, 18, 21, 22, 24
3.	Polite	<ul style="list-style-type: none"> Say hello before speaking Students are more polite in speaking Dress neatly and politely when studying 	Informants 1, 3, 10, 14, 20
4.	Environmental care	<ul style="list-style-type: none"> Working together to clean up the environment Cleaning places of worship Dispose of trash in its place 	Informants 23, 25, 27, 30
5.	Love for country	<ul style="list-style-type: none"> Sing the national anthem National flag salute Recognizing Pancasila as the basis of the state Actively voicing moderate Islam Caring for diversity 	Informants 5, 6, 8, 10, 13, 15, 17, 20, 24

311 Source: Data of Depth-Interview

312

313 In table 2, lecturers and students provide reinforcement of previous data, that CBT has
314 an impact on strengthening student character which is implemented concretely in campus life.
315 In terms of religious character, students are more diligent in praying in congregation, reading
316 the Qur'an, and actively participating in voicing religious moderation. Likewise, the discipline
317 aspect has been strengthened with indicators of the percentage of attendance at learning
318 increasing, stopping activities at prayer times, and fulfilling promises of guidance with
319 lecturers. In the aspect of politeness, students say hello when meeting lecturers or are about to
320 start a conversation, and dress neatly. While strengthening the character of caring for the
321 environment is the activeness of students in carrying out social service activities by cleaning
322 the surrounding environment and disposing of trash in its place. In the aspect of the character
323 of loving the country, students sing the national anthem, respect the flag, recognize Pancasila
324 as the basis of the state, and strengthen Islamic moderate which is the jargon of the Ministry of
325 Religion.

326
327 These qualitative results are reinforced by other research results, which believe in the
328 strength of educational institutions as centers of excellence in preparing superior character.
329 This belief encourages everyone to be ready to face global challenges, and Indonesia will
330 become a very strong nation in all fields in 2045 or 100 years after independence (Rokhman et
331 al., 2014). In addition, the culture developed in educational institutions is able to provide
332 reinforcement for self-development (Defitrika & Mahmudah, 2021), and because cultural
333 values will always be attached to humans whenever and wherever they are (Ferdiawan & Putra,
334 2013).

335
336 Thus, CBT can quantitatively and qualitatively empower the character of students in tertiary
337 institutions. In this case, the content of CBT material includes spiritual, academic, and
338 physical aspects. These three characteristics are a reflection of integration of religious
339 knowledge, general knowledge, skills and national insight (moderation) as the vision of
340 [information redacted to maintain the integrity of the review process]. The CBT program
341 applies integration of various kinds of knowledge and skills from theoretical (in-class) and
342 practical (daily life) aspects. This means that CBT is carried out in an integrated, interrelated
343 and mutually supportive manner. This needs to be continued, optimized, deepened, and even
344 expanded so that it is necessary to strengthen national character education. For this reason,

345 from now on, it is necessary to carry out the Character Education Strengthening Movement
346 (PPK) by heeding the principles of continuity.

347 **Conclusion**

348

349 Character education is a national policy that is contained in laws and regulations and is
350 spelled out in the vision and mission of higher education institutions. The implementation cycle
351 includes CBT campaigns, capacity building, and institutionalization involving leaders,
352 lecturers, and students with parenting, learning, mentoring, and consulting approaches. The
353 content includes attitudes and values, skills, knowledge, and moderate integrative insights, as
354 well as reinforcement of tolerant, open, critical, caring, creative behavior, respecting
355 differences, and polite and commendable behaviors. Quantitatively, CBT has emphasized the
356 character of religion, discipline, courtesy, care for the environment, and love for the country.
357 The biggest and dominant aspects are strengthening of religious character and love of country.
358 This study has limitations because it is carried out at a small and limited locus. However, it can
359 be adapted to locus that has the same characteristics. The researcher recommends that further
360 studies be continued at a broader locus, so as to have complete recommendations for the
361 continuation of character education which is very important for a nation.

362

363 **Acknowledgements**

364

365 **Competing interests**

366

367 [information redacted to maintain the integrity of the review process]

368

369 **Author contributions**

370

371 [information redacted to maintain the integrity of the review process]

372

373 **Funding**

374

375 [information redacted to maintain the integrity of the review process]

376

377 **Data availability**

378

379 [information redacted to maintain the integrity of the review process]

380

381 **Disclaimer**

382

383 [information redacted to maintain the integrity of the review process]

384

385 **Ethical Considerations**

386

387 [information redacted to maintain the integrity of the review process]

388

389 Reference

390

391 Amri, K. (2021). Character Development in the Teaching and Learning Process at the Langsa
392 State Islamic Institute. *Al-Ikhtibar: Journal of Education* , 8 (1), 62–78.

393 Ariestina, H. (2019). Planting Tolerance Values as Strengthening Character Education in
394 Madrasah Ibtidaiyyah. *WASPADA (Journal of Educational Development Insights)* , 6
395 (2), 1–11.

396 Bogdan, R., & Biklen, SK (1997). *Qualitative research for education* . Allyn & Bacon Boston,
397 MA.

398 Defitrika, F., & Mahmudah, FN (2021). Development of life skills education as character
399 building. *International Journal of Educational Management and Innovation* , 2 (1),
400 116–135.

401 Ferdiawan, E., & Putra, WE (2013). Esq education for children character building based on the
402 philosophy of Javaness in Indonesia. *Procedia-Social and Behavioral Sciences* , 106 ,
403 1096–1102.

404 Gayathri, MS (2020). *The relationship between perceptions of father involvement in parenting
405 and adversity intelligence in overseas students in Yogyakarta* . University of Mercu
406 Buana Yogyakarta.

407 Griffin, P., & Care, E. (2014). *Assessment and teaching of 21st century skills: Methods and
408 approach* . Springer.

409 Gunawan, II, & Gunawan, I. (2019). Develop educational leadership by applying values and
410 ethics to strengthen student character. *5th International Conference on Education and
411 Technology (ICET 2019)* , 23–29.

412 Harmawati, Y., & Abdulkarim, A. (2016). The cultural values of the Dieng Culture Festival
413 tradition as local wisdom to build national character. *Journal of the Urban Society's
414 Arts* , 3 (2), 82–95.

415 Hermino, A., & Arifin, I. (2020). Contextual Character Education for Students in the Senior
416 High School. *European Journal of Educational Research* , 9 (3), 1009–1023.

417 Hook, JN, Farrell, JE, Johnson, KA, Van Tongeren, DR, Davis, DE, & Aten, JD (2017).
418 Intellectual humility and religious tolerance. *The Journal of Positive Psychology* , 12
419 (1), 29–35.

420 Ismail, S., Suhana, S., & Zakiah, QY (2020). Policy analysis of strengthening character
421 education in realizing Pancasila students in schools. *Journal of Educational*

- 422 *Management and Social Sciences* , 2 (1), 76–84.
- 423 Ministry of Religion. (2019). *Decree of the Director General of Islamic Education Number*
424 *7272 of 2019 concerning Guidelines for the Implementation of Religious Moderation*
425 *in Islamic Education* .
- 426 Krumrei-Mancuso, EJ (2018). Intellectual humility's links to religion and spirituality and the
427 role of authoritarianism. *Personality and Individual Differences* , 130 , 65–75.
428 <https://doi.org/https://doi.org/10.1016/j.paid.2018.03.037>
- 429 Kurniawati, R., & Maemonah, M. (2021). Guidance on media literacy and the mainstreaming
430 of religious moderation at PPM-PIN IAIN Surakarta. *Quality* , 9 (2), 311–334.
- 431 Leary, MR, Diebels, KJ, Davisson, EK, Jongman-Sereno, KP, Isherwood, JC, Raimi, KT,
432 Deffler, SA, & Hoyle, RH (2017). Cognitive and interpersonal features of intellectual
433 humility. *Personality and Social Psychology Bulletin* , 43 (6), 793–813.
- 434 Marini, A., Maksum, A., Satibi, O., Edwita, Yarmi, G., & Muda, I. (2019). Model of student
435 character based on character building in teaching learning process. *Universal Journal*
436 *of Educational Research* , 7 (10), 2089–2097.
437 <https://doi.org/10.13189/ujer.2019.071006>
- 438 Muhtifah, L., Prasojo, ZH, Sappe, S., & Elmansyah, E. (2021). The theology of Islamic
439 moderation education in Singkawang, Indonesia: The city of tolerance. *HTS*
440 *Theologiese Studies/Theological Studies* , 77 (4), 10.
- 441 Munawwaroh, A. (2019). Exemplary as a method of character education. *Journal of Islamic*
442 *Education Research* , 7 (2), 141.
- 443 Mutmainah, SU, & Dewi, DA (2021). Reactualization of Pancasila Values and Their
444 Implementation as Efforts to Build National Character. *Edukatif: Journal of*
445 *Educational Sciences* , 3 (2), 611–618.
- 446 Neliwati, N., & Dahlan, Z. (2022). Management Of Strengthening Character Education
447 Activities for Students at State Islamic Religious College in Indonesia (Study On
448 PTKIN In Java and Sumatra). *Islamic Education: Journal of Islamic Education* , 10
449 (02).
- 450 Osman, K., Hiong, LC, & Vebrianto, R. (2013). 21st Century biology: An interdisciplinary
451 approach of biology, technology, engineering and mathematics education. *Procedia-*
452 *Social and Behavioral Sciences* , 102 , 188–194.
- 453 Oviaana, W., & Rijal, F. (2021). The Role of Islamic Higher Education Institution in Developing
454 Students' Character Value. *AL-ISHLAH: Journal of Education* , 13 (1), 570–580.

- 455 [information redacted to maintain the integrity of the review process] .
456 [information redacted to maintain the integrity of the review process]
457 [information redacted to maintain the integrity of the review process]
458 [information redacted to maintain the integrity of the review process]
459 [information redacted to maintain the integrity of the review process]
460 [information redacted to maintain the integrity of the review process]
461 Permana, H., Fauzi, IAH, Hasanah, A., & Arifin, BS (2021). Development of a Character
462 Education Management Model in Schools. *Muntazam: Journal of Islamic Education*
463 *Management* , 2 (01).
464 Pradana, DA, Mahfud, M., Hermawan, C., & Susanti, HD (2020). Nationalism: Character
465 Education Orientation in Learning Development. *Budapest International Research and*
466 *Critics Institute-Journal (BIRCI-Journal) Volume* , 3 , 4026–4034.
467 Purwanto, MR, Mukharrom, T., & Rahmah, PJ (2021). Optimization of Student Character
468 Education through the Islamic Boarding School Program at the Islamic Boarding
469 School of the Islamic University of Indonesia. *Review of International Geographical*
470 *Education Online* , 11 (5).
471 Center for Research and Development. (2021). *Student character index* .
472 Rodriguez, D., Perez, C., Jagersand, M., & Figueroa, P. (2017). A comparison of smartphone
473 interfaces for teleoperation of robot arms. *2017 XLIII Latin American Computer*
474 *Conference (CLEI)* , 1–8. <https://doi.org/10.1109/CLEI.2017.8226383>
475 Rokhman, F., Hum, M., & Syaifudin, A. (2014). Character education for the golden generation
476 of 2045 (national character building for Indonesian golden years). *Procedia-Social and*
477 *Behavioral Sciences* , 141 , 1161–1165.
478 Santika, IWE (2020). Character education in online learning. *Indonesian Values and Character*
479 *Education Journal* , 3 (1), 8–19.
480 Sondakh, DSI, Rahmatullah, AS, Adiyono, A., Hamzah, MZ, Mediteraniainingsih, R., &
481 Kholifah, N. (2022). Integration of language, psychology, and technology and the
482 concept of independence learning in reading characters in Indonesian children's films
483 as media and learning materials in character building for elementary school students-
484 Indonesia. *Linguistics and Culture Review* , 6 (1), 70–88.
485 Spradley, J.P. (2016). *Participant observation* . Waveland Press.
486 Sulastra, MC, & Handayani, V. (2020). Parenting Based on Character Strength and Self-
487 Involvement in Students. *PHILANTHROPY: Journal of Psychology* , 4 (2), 143–157.

- 488 Supa'at, S. (2014). Model of Character Education Policy in Madrasas. *Journal of Islamic*
489 *Education* , 3 (1), 203–225.
- 490 Surya, YF (2017). The Use of the 21st Century Character Education Learning Model in Early
491 Childhood. *Journal of Obsession: Journal of Early Childhood Education* , 1 (1), 52–
492 61.
- 493 Suryadi, B., & Hayat, B. (2021). *Religiosity Concept, Measurement, and Implementation in*
494 *Indonesia* . Bibliosmia by Indonesia.
- 495 Susilawati, S., Aprilianti, D., & Asbari, M. (2022). The Role of Islamic Religious Education in
496 Forming the Religious Character of Students. *Journal of Information Systems and*
497 *Management (JISMA)* , 1 (1), 1–5.
- 498 Tannenbaum, N. (1980). (Spradley) Participant Observation (Book Review). *Anthropological*
499 *Quarterly* , 53 (4), 260.
- 500 Zhang, H., Hook, JN, Farrell, JE, Mosher, DK, Van Tongeren, DR, & Davis, DE (2018). The
501 effect of religious diversity on religious belonging and meaning: The role of intellectual
502 humility. *Psychology of Religion and Spirituality* , 10 (1), 72.
- 503 Zubaidah, S. (2018). Get to know 4C: Learning and Innovation Skills to Face the Revolutionary
504 Era 4.0. *2nd Science Education National Conference* , 13 (October 2018), 1–18.
- 505 Zulela, MS, Neolaka, A., Iasha, V., & Setiawan, B. (2022). How is the Education Character
506 Implemented? The Case Study in Indonesian Elementary School. *Journal of Educational and*
507 *Social Research* , 12 (1), 371.
- 508



REVIEWER INSTRUCTIONS

Take into account



CONFIDENTIALITY

Do not share the contents of this manuscript. Ensure the confidentiality of the peer review process and the proprietary rights of the authors.



CONFLICT OF INTEREST

Disclose the nature of the conflict of interest to the Editor, and decline the review request if a conflict of interest is present.



AUTHENTICITY OR INTEGRITY

Inform the Editor if you have questions about the authenticity or integrity of the reported research.



TIMEFRAME

Keep to the timeframe set out by the Editor. Ensuring a timely, productive peer-review process aids in shaping the credibility and reputation of our journal.



CRITICISM OF AUTHORS

Personal or malicious criticism of the author is not appropriate or acceptable.



YOUR REVIEW REPORT

Explain and support your judgements. Ensure that any statement, observation, derivation or argument made is accompanied by relevant details from the manuscript, and where appropriate a relevant citation. Judge the quality of the manuscript, its experimental and theoretical work, its interpretations and its exposition objectively.



CONTENT

Consider this manuscript without bias, judging it on its merits without regard to the inferred race, religion, nationality, sex or seniority of the authors.



Submit your feedback

Login to the journal platform, taking care to action steps 5-7

1

REVIEW FORM

Step 5: Select the bubble icon next to the word Review in Step 5 to complete the electronic review form. Complete the form, then click on Save and then Close. Partially completed forms cannot be saved.

2

REPORT FILES (optional)

Step 6: If preferred, you can upload multiple files in this step; ensure that these files are applicable and valid to your review of the manuscript.

Files can include:

- Your own review report.
- The manuscript with tracked changes.
- Supporting documents.

3

RECOMMENDATION (required)

Step 7: Select your recommendation and click on **Submit Review to Editor**. This will finalise your review and send it to the journal's Editor. You will not be able to access the review after completing this step.

- Send the email confirming the completion of your review.

MANUSCRIPT TO REVIEW

1 **Model Character Building Training for Young People in Islamic Universities to** 2 **Strengthen Religious Moderation**

3

4 **Abstract**

5

6 On average, the student character survey in Indonesia in 2021 resulted in a decreased index
7 number compared to last year's index results. Even though the character of young people is a
8 crucial process and determines the future of a nation, this study aims to explore the policies
9 and content of Character Building Training (CBT) and the program's impact on student
10 character. The informants of this research were 60 students and eight lecturers. Data were
11 collected through observation, in-depth interviews, and documentation from June to September
12 2022. Data analysis was carried out manually using the Discovering Cultural Themes model
13 through three stages: data reduction, data display, and drawing conclusions and verification.
14 The study results show that CBT is carried out through cycles of CBT campaigns, capacity
15 building, and institutionalization with parenting, learning, mentoring, and mentoring
16 approaches. Its content includes integrative moderate attitudes and values, skills, knowledge,
17 insights, and reinforcement of tolerant, open, critical, caring, creative behavior, respecting
18 differences, and polite and commendable behavior. Quantitatively, CBT has strengthened the
19 character of religion, discipline, courtesy, care for the environment, and love for the
20 motherland. The most extensive and dominant strengthening of religious character and love of
21 the motherland. The implication and contribution of this research is the continuation of
22 character education for young people as an instrument to strengthen religious moderation.

23 **Contribution:** This research is important theoretically and practically to contribute to the
24 formation of character building in young people in Islamic tertiary institutions. Currently,
25 character education is the main vision of Islamic tertiary institutions in Indonesia, which is
26 associated with religious moderation as one of the priorities in the national medium-term
27 development plan.

28 **Keywords:** Character, Young, Islamic University, Religious Moderation

29

Introduction

Character building has become a national issue in several countries, including Indonesia. Why is that? Because character is related to the process of fostering and improving behavior as well as noble values which certainly must be imbued with Pancasila values (Harmawati & Abdulkarim, 2016). Character building is also one of the efforts to overcome moral decline, disintegration of the nation and the fading of cultural values (Mutmainah & Dewi, 2021). Character is a set of attitudes or traits that can be formed through various activities, such as the process of interaction in social life and or the process of communication and interaction with family and the environment (Sondakh et al., 2022; Susilawati et al., 2022). Thus, character will greatly determine how a nation is formed, and moves dynamically in responding to social developments both in the internal and external environment.

Character education has now become a national priority with the birth of the Strengthening Character Education policy (Ariestina, 2019), which includes the long process of the empowerment movement, namely empowering the potential of students in the process of humanizing, and the process of civilizing (Surya, 2017), towards Indonesian people who have strong and commendable characters (Permana et al., 2021). Therefore, the educational institution is a very important instrument as a socialization medium for acculturation and enculturation in the context of forming the character of the nation and state (Supa'at, 2014). Educational institutions at every level must internalize strengthening character education. Character education is surely relevant to the cultural and religious values that are developing in Indonesia.

The Center for Research and Development for Religious and Religious Education found the Student Character Index (IKPD) at the Secondary Education Level in 2019 to be 70.70. This value is a composite number of 58 indicators and 22 aspects grouped into the dimensions of religiosity, nationalism, independence, mutual cooperation, and integrity from 34 provinces in Indonesia. When viewed from this overall score, IKPD in Indonesia is in the "high" category, although it is not yet in the "very high" category (Puslitbang, 2021). Strengthening this index is supported by religiosity, nationalism, independence, mutual cooperation, and integrity. In fact, in Indonesia, the problem of deviant behavior is still a central issue that must be resolved among millennial youth through education (Zulela et al., 2022), so that they have good

Commented [A1]: In the introduction, the author fails to show what is interesting, unique and important about this research. The author does not do a good job of exploring the important issues of this article.

63 character which are in accordance with the moral and ethical values that apply in society
64 (Santika, 2020), with the stages of imparting knowledge, strengthening feelings, and
65 rationalizing actions that will become a person's character (Munawwaroh, 2019).

66

67 Several research results at the State Islamic University (PTKIN) show a massive interest
68 in the theme of national character. Research at PTKIN in Aceh shows that the character
69 education cycle is carried out with complete synergy between the formulation of vision and
70 mission, curriculum, rules and policies, provision of facilities and a thorough evaluation
71 (Oviana & Rijal, 2021). Meanwhile, studies at PTKIN in Sumatra and Cirebon strengthen
72 character through *Ma'had* with the implementation of a strict code of ethics for lecturers,
73 students and staff (Neliwati & Dahlan, 2022). Studies at other tertiary institutions also show
74 that character education strategies are habituation, role models, advice, rewards, and sanctions
75 (Amri, 2021). This policy is also adopted by several public tertiary institutions in order to instill
76 a moderate character in Muslim and non-Muslim students ([Author(s), in press]). This previous
77 research only focused on the implementation cycle of character education in tertiary
78 institutions, not yet touching on the impact of character education on religious character,
79 discipline, politeness, caring for the environment, and love for the country. This character value
80 is very important to know and is the main indicator in character education. This character was
81 internalized starting from preparation, core activities and the educational process succeeded in
82 increasing the character of students (Marini et al., 2019).

83

84 Several research results show that a person's character, especially religiosity, will be
85 directly related to religious tolerance (Hook et al., 2017; Krumrei-Mancuso, 2018; Leary et al.,
86 2017; Rodriguez et al., 2017; Zhang et al., 2018). From these results, it can be concluded that
87 the successful implementation of character education will strengthen religious moderation
88 (Muhtifah et al., 2021). It is highly important for young people shape their character, so that in
89 social life they will become pioneers and unifier for national unity, not the opposites such as to
90 feel self-righteous, easily disbelieve others, find it difficult to engage in dialogue with other
91 religions, and even end up causing social divisions.

92

93 There is no research that has thoroughly examined this program, so studies are needed to
94 identify and track how policies and content of character education, and what impact they have
95 on student character. Based on the results of previous research and these facts, the contribution

Commented [A2]: Are you sure?

96 of this study will focus on; policies and content of Character Building Training, and the impact
97 of the program on student character. At PTKIN, which is the locus of this research, has a
98 program called Character Building Training (CBT) which is intended to combine parenting,
99 learning, mentoring, and consulting patterns. This activity is one of the efforts to accelerate the
100 achievement of a leading vision in scientific integration characterized by local wisdom.

101

102 **Methods**

103

104 This research implemented a qualitative descriptive approach. Qualitative research has 3
105 (three) main components that are observed. Firstly, the *place* or locus of research is at
106 [information redacted to maintain the integrity of the review process]. Secondly, actors are
107 the one who are playing a certain role. In the context of this research, the actors who are the
108 object of research are all the components involved in the Character Building Training
109 program. Thirdly, activities (Tannenbaum, 1980) or program carried out by actors in ongoing
110 social situations.

111

112 Determination of data sources was carried out by purposive sampling, based on certain
113 characteristics (inclusion criteria) that have a close relationship with previously known
114 characteristics, based on the research objectives. The informants of this research were 60
115 students and 8 lecturers. Researchers conducted interviews with lecturers, and made
116 observations of student behavior based on character indicators using observation sheets.

117

118 Data were collected through observation, in-depth interviews, and documentation which were
119 conducted from June to September 2022 in the city of [information redacted to maintain the
120 integrity of the review process]. The observation used was participant observation.

121 Researchers used observation guidelines to record these activities. To maintain the validity of
122 observations, the authors use field notes (Bogdan & Biklen, 1997) or commonly called a field
123 notebook. Field notes are used to record various events related to the implementation of CBT.

124

125 Data analysis was carried out manually with the Discovering Cultural Themes model to
126 understand the typical symptoms of the previous analysis. This analysis collects the various
127 themes, cultural focus, values, and cultural symbols that exist in each domain (Spradley, 2016).

128 The use of cultural and social analysis is most appropriate for evaluation and control, because

129 an understanding of the national community is one of the components on which the whole
130 process of cooperation can rely. The data were analyzed through three stages, namely, data
131 reduction, data display, and drawing conclusions and verification.

132

133 **Result and Discussion**

134

135 **Character Building Training: Policy and Content**

136

137 Character education has become a seedbed for noble religious and cultural values in
138 Indonesia, through the State Islamic University (PTKIN) as an official government institution
139 under the auspices of the ministry of religion. Technically, the implementation of character
140 education in organizations within the Ministry of Religion has been strengthened by
141 Regulation of the Minister of Religion Number 2 of 2020 concerning Implementation of
142 Strengthening Character Education which states that PPK in the type of Religious Education
143 through formal channels is carried out at the level of early childhood education, basic
144 education, secondary education , and higher education independently, in an integrated manner
145 in intra-curricular, co-curricular and extra-curricular activities. In the context of this research
146 locus, the implementation of [information redacted to maintain the integrity of the review
147 process] vision as a tertiary institution that integrates local knowledge and wisdom will be a
148 necessary process. The value system and system of norms in community culture can be
149 optimized to support this process of strengthening character education on an on-going basis
150 (Hermino & Arifin, 2020) .

151

152 If examined, various government policies to carry out character strengthening programs,
153 and carried out by cross ministries. Policies regarding character education include Law Number
154 20 of 2003 concerning the National Education System, Republic of Indonesia Law Number 12
155 of 2012 concerning Higher Education, Presidential Regulation Number 87 of 2017 concerning
156 Strengthening Character Education, Decree of the Director General of Islamic Education
157 Number 7272 of 2019 concerning Guidelines for Implementing Religious Moderation in
158 Islamic Education, and Decree of the Director General of Islamic Education Number 1595 of
159 2021 concerning Guidelines for the Implementation of *Ma'had Al-Jami'ah* at State Islamic
160 Religious Universities. The context for the emerge of this policy is the *Nawa Cita* mandate
161 contained in point 8, namely mental revolution (Ismail et al., 2020). In addition, graduates of

Commented [A3]: In the result section, interview quotes are also limited. In the results and discussion section, there is no in-depth analysis.

162 national educational institutions are required to be able to compete internationally. The
163 implication is that it becomes urgency for every domestic educational institution, especially
164 universities, to graduate Indonesian human resources of the same quality as those of foreign
165 countries. The quality of human resources in Indonesia has indeed become a central issue
166 within educational institutions since the last few decades.

167

168 Looking at these internal and external developments, [information redacted to maintain the
169 integrity of the review process] as an Islamic higher education institution has carried out a
170 transformation including formulating a vision and mission that can represent the strength of
171 this institution as an organization that maintains Islamic values and local culture, as well as
172 integrates knowledge as a differentiation with other tertiary institutions. The response is then
173 institutionalized into a CBT program that students must follow.

174

175
176
177
178
179
180
181
182
183
184
185
186
187
188
189

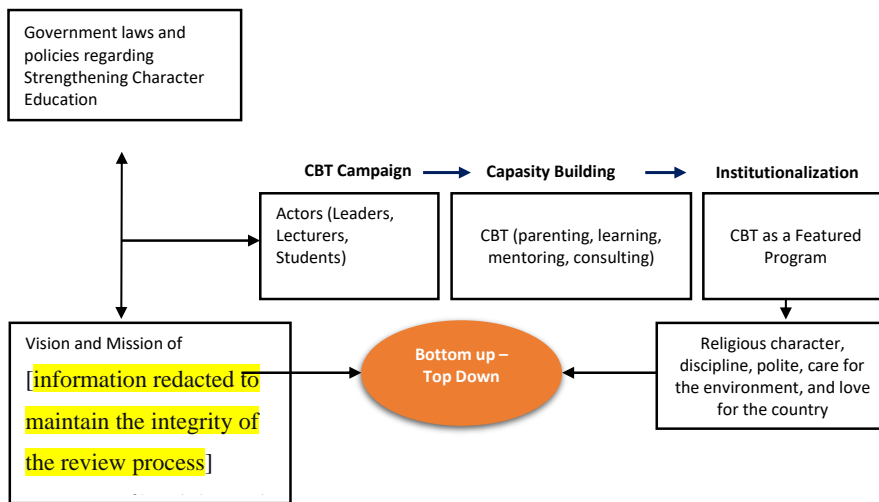


Figure 1 . CBT Model Flow in Character Formation

190

191 Figure 1 shows how the CBT flow is formed starting from various government policies
192 to strengthen character. The first process begins with a central government policy that
193 mainstreams character education which is factually capable of strengthening student character
194 (Gunawan & Gunawan, 2019; Purwanto et al., 2021). This policy then becomes the vision of
195 institutions that is eager to integrate local knowledge and wisdom. In several studies, local
196 wisdom is a noble value that strengthens the character of students and society in general
197 ([Author(s), in press]). This character contains moderate values which are characteristic of the
198 implementation of Islamic values in Indonesia.

199

200 In the second stage, it is involving actors including leaders, lecturers, and students in
201 socializing and mainstreaming CBT. The involvement of all parties in character education is
202 very important to ensure the sustainability and success of this program as the main pillar of
203 character learning in higher education (Pradana et al., 2020). The third stage is capacity
204 building which is carried out through parenting, learning, mentoring, and consulting which is
205 much needed to empower student character (Gayatri, 2020; Sulastra & Handayani, 2020). In
206 the fourth stage, the institutionalization of CBT is carried out as one of the featured programs
207 of [information redacted to maintain the integrity of the review process].

208

209 "Regarding the Character Building Training (CBT) Program, this is a policy at PTKIN which
210 we think can be useful for building student character. This activity is mandatory for students
211 to participate in and this policy is valid until now even though there are modifications to the
212 form of training with the aim of forming an Islamic character for students. The goal of this
213 CBT program is for students to have Islamic character, we hope students are not only
214 intellectually intelligent but also emotionally and spiritually intelligent (AP, MH, NS,
215 interview; 2022).

216

217 In the fifth stage, an evaluation of the enculturation of student characters is carried out which
218 are expected to grow and be emphasized in CBT activities, including religious, disciplined,
219 polite, caring for the environment, and love for the country. This character is the
220 differentiation between [information redacted to maintain the integrity of the review process]
221 and other tertiary institutions that have the same program and level of education. The process
222 of implementing CBT is carried out both bottom up and top down which are complementary

223 to each other. The CBT program is centrally supported by laws and regulations, but technically
224 it still takes into account the socio-religious characteristics of each environment.

225

226 Technically, the ministry of religion has released Decree of the Director General of
227 Islamic Education Number 7272 of 2019 concerning Guidelines for the Implementation of
228 Religious Moderation in Islamic Education (Ministry of Religion, 2019). This is what is
229 described in the form of technical policies at the level of Islamic educational institutions. The
230 contents of the Character Building Training material have been prepared based on the
231 Indonesian National Qualifications Framework (KKNI). The Learning Outcomes include
232 attitudes and values, skills, knowledge, moderate and integrative insights. The content and
233 learning outcomes are presented in table 1 as follows:

234

235

Table 1. Learning Outcomes of Character Building Training

No	Learning Outcomes	Description
1.	Attitudes and Values	These attitudes and values are reflected in the practice and implementation of the knowledge they have learned in the form of attitudes and everyday behavior, such as be tolerant, open, critical, caring, creative, respect differences, and behave politely and commendably
2.	Skills	Have the skills of being an <i>imam</i> or priest for congregational prayers, leading congregational prayers, reading the Qur'an fluently, taking care of corpses, reading the yellow book and understanding it, and being able to lead worship practices in daily life. Apart from being skilled in religion, he is also skilled in language, art, and social affairs
3.	Knowledge	Have mastery of science and knowledge and religion (Islam) in accordance with specified competencies, such as mastery and understanding of <i>tajwid</i> , jurisprudence, interpretation, creed, morals, <i>tasawuf</i> , and so on.
4.	Moderate and Integrative Insight	Have an insight into moderation in religious thought and behavior (namely tolerance, non-violence, openness or local wisdom, and national commitment) as well as having the competence to apply their knowledge, knowledge and skills in an integral (integrated) manner.

236 Source: *Ma'had al-Jami'* Curriculum of [information redacted to maintain the integrity of the
 237 review process]

238 , 2021

239

240 In table 1, it can be concluded that in terms of attitudes and values the CBT learning
241 outcomes program is tolerant, open, critical, caring, creative, respecting differences, and polite
242 and commendable behavior which is very relevant to competence in the 21st century
243 (Zubaidah, 2018) . The five main domains of 21st century skills are digital literacy, intensive
244 thinking, effective communication, high productivity and spiritual and moral values. (Osman
245 et al., 2013) was included. Temporary Griffin & Care (2014) classify 21st century skills and
246 attitudes as ways to think (knowledge, critical and creative thinking), ways to learning (literacy
247 and soft skills), and ways to learn with others (personal, social, and civic responsibilities). The
248 learning outcomes have also emphasized the insights of integrative religious moderation.
249

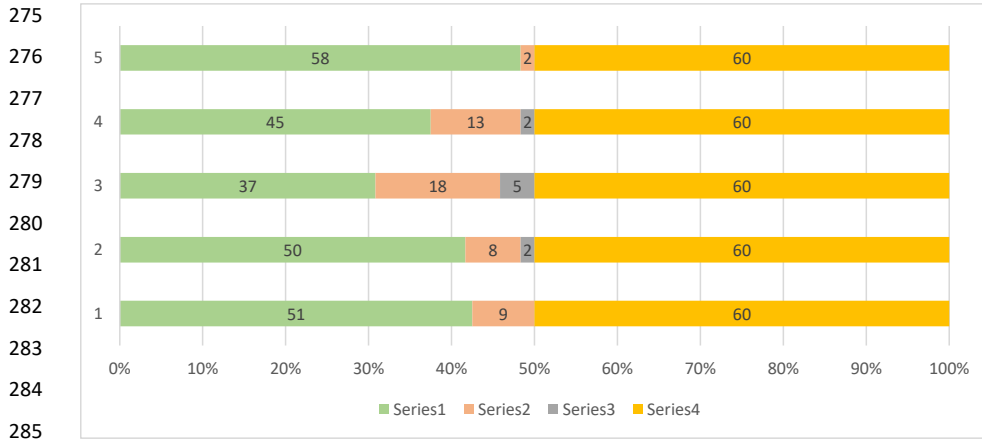
250 Thus, CBT is a very important program in higher education institutions in Indonesia,
251 because it is related to character education which greatly determines the future of a nation.
252 Through policies from the central government and translated into tertiary institutions, this
253 program has been running according to the characteristics of their respective environments.
254 This is a good practice that has been developed by universities, but there is still a lot of
255 homework to be done to ensure that the process of cultivating character values runs and is
256 sustainable. In addition, policies that are more comprehensive and based on local wisdom are
257 urgently needed to respond to the challenges of an increasingly complex era, starting from
258 issues that threaten the integrity and future of the nation to global competition. This policy will
259 become the basis for the formulation of more concrete steps so that the seeding and cultivating
260 of the main values for the formation of the nation's character can be carried out effectively and
261 comprehensively.
262

263 **Character Building Training: Impact on Students**

264

265 The character education CBT program aims to make students have good character, at
266 least there are five characters that we always teach students while they are participating in the
267 CBT program. Firstly, it is religious character. The process is to teach students to carry out
268 religious activities such as *Dhuha* prayers together. Even though, before the pandemic we
269 instilled the habit of always praying at night. Second is politeness in behavior that reflects noble
270 character. Third is discipline. Students should not arrive late. The fourth is to care for the
271 environment. We teach students to always care for the environment. The indicators are students

272 should not litter, neatly arrange shoes and sandals and park of Islamic boarding schools. The
273 fifth is to strength national values with love for the country.
274



Graph 1 . Results of Observation of the Character of Students Participating in CBT N

288

289 In graph 1, students who have high religiosity are 51 people (85%), in the medium
290 category 15 people (15%). In terms of discipline, 50 (83%) are in the high category, 8 people
291 (13%) are in the medium category, and 2 people (4%) are in the low category. Meanwhile, in
292 the politeness aspect, there were 37 people (62%) in the high category, 18 people (30%) in the
293 medium category, and 5 people (8%) in the low category. In terms of caring for the
294 environment, 45 people (75%) are in the high category, 13 people (22%) are in the medium
295 category, and 2 people (4%) are in the low category. Meanwhile, for the character of love for
296 the country, 58 people (96%) are in the high category, and 20 people (4%) are in the medium
297 category.

298

299 In these data, religiosity and love for the country are the characters that have the most
300 dominant values. This is supported by other research results, where Muslim student
301 respondents in this study had a high level of religiosity, namely 58.7% and around 41.3% had
302 low religiosity. Meanwhile, based on gender, women tend to have high religiosity when
303 compared to men, with a percentage of 61.1% compared to 46.9% (Suryadi & Hayat, 2021).
304 Likewise, strengthening various literacy supported by adequate religiosity has succeeded in
305 campaigning for friendly, polite and tolerant Islamic values (Kurniawati & Maemonah, 2021).

306 In addition, this quantitative data were strengthened by the results of the depth-interviews
307 conducted with lecturers and students regarding the impact of CBT on character strengthening.
308 The results of the interviews are presented in table 2 below:

309

Commented [A4]: You said qualitative in the method, but here you move to quantitative? You need to explain this in the method

310

Table 2. Findings of Character Strengthening for CBT Participants

No	Character	Findings	Data source
1.	Religious	<ul style="list-style-type: none"> The percentage of congregational prayers has increased Read the Koran regularly Reporting the memorization Active in voicing religious moderation 	Informants 2, 4, 5, 7, 8, 9, 11, 13
2.	Discipline	<ul style="list-style-type: none"> The percentage of student attendance increased Stopping activities when the call to prayer in the mosque Fulfilling guidance appointments with lecturers 	Informants 15, 16, 18, 21, 22, 24
3.	Polite	<ul style="list-style-type: none"> Say hello before speaking Students are more polite in speaking Dress neatly and politely when studying 	Informants 1, 3, 10, 14, 20
4.	Environmental care	<ul style="list-style-type: none"> Working together to clean up the environment Cleaning places of worship Dispose of trash in its place 	Informants 23, 25, 27, 30
5.	Love for country	<ul style="list-style-type: none"> Sing the national anthem National flag salute Recognizing Pancasila as the basis of the state Actively voicing moderate Islam Caring for diversity 	Informants 5, 6, 8, 10, 13, 15, 17, 20, 24

311 Source: Data of Depth-Interview

312

313 In table 2, lecturers and students provide reinforcement of previous data, that CBT has
314 an impact on strengthening student character which is implemented concretely in campus life.
315 In terms of religious character, students are more diligent in praying in congregation, reading
316 the Qur'an, and actively participating in voicing religious moderation. Likewise, the discipline
317 aspect has been strengthened with indicators of the percentage of attendance at learning
318 increasing, stopping activities at prayer times, and fulfilling promises of guidance with
319 lecturers. In the aspect of politeness, students say hello when meeting lecturers or are about to
320 start a conversation, and dress neatly. While strengthening the character of caring for the
321 environment is the activeness of students in carrying out social service activities by cleaning
322 the surrounding environment and disposing of trash in its place. In the aspect of the character
323 of loving the country, students sing the national anthem, respect the flag, recognize Pancasila
324 as the basis of the state, and strengthen Islamic moderate which is the jargon of the Ministry of
325 Religion.

326
327 These qualitative results are reinforced by other research results, which believe in the
328 strength of educational institutions as centers of excellence in preparing superior character.
329 This belief encourages everyone to be ready to face global challenges, and Indonesia will
330 become a very strong nation in all fields in 2045 or 100 years after independence (Rokhman et
331 al., 2014). In addition, the culture developed in educational institutions is able to provide
332 reinforcement for self-development (Defitrika & Mahmudah, 2021), and because cultural
333 values will always be attached to humans whenever and wherever they are (Ferdiawan & Putra,
334 2013).

335
336 Thus, CBT can quantitatively and qualitatively empower the character of students in tertiary
337 institutions. In this case, the content of CBT material includes spiritual, academic, and
338 physical aspects. These three characteristics are a reflection of integration of religious
339 knowledge, general knowledge, skills and national insight (moderation) as the vision of
340 [information redacted to maintain the integrity of the review process]. The CBT program
341 applies integration of various kinds of knowledge and skills from theoretical (in-class) and
342 practical (daily life) aspects. This means that CBT is carried out in an integrated, interrelated
343 and mutually supportive manner. This needs to be continued, optimized, deepened, and even
344 expanded so that it is necessary to strengthen national character education. For this reason,

345 from now on, it is necessary to carry out the Character Education Strengthening Movement
346 (PPK) by heeding the principles of continuity.

347 **Conclusion**

348

349 Character education is a national policy that is contained in laws and regulations and is
350 spelled out in the vision and mission of higher education institutions. The implementation cycle
351 includes CBT campaigns, capacity building, and institutionalization involving leaders,
352 lecturers, and students with parenting, learning, mentoring, and consulting approaches. The
353 content includes attitudes and values, skills, knowledge, and moderate integrative insights, as
354 well as reinforcement of tolerant, open, critical, caring, creative behavior, respecting
355 differences, and polite and commendable behaviors. Quantitatively, CBT has emphasized the
356 character of religion, discipline, courtesy, care for the environment, and love for the country.
357 The biggest and dominant aspects are strengthening of religious character and love of country.
358 This study has limitations because it is carried out at a small and limited locus. However, it can
359 be adapted to locus that has the same characteristics. The researcher recommends that further
360 studies be continued at a broader locus, so as to have complete recommendations for the
361 continuation of character education which is very important for a nation.

362

Commented [A5]: The conclusion of this article also does not show a novelty that is important for the character education model for young people.

363 **Acknowledgements**

364

365 **Competing interests**

366

367 [information redacted to maintain the integrity of the review process]

368

369 **Author contributions**

370

371 [information redacted to maintain the integrity of the review process]

372

373 **Funding**

374

375 [information redacted to maintain the integrity of the review process]

376

377 **Data availability**

378

379 [information redacted to maintain the integrity of the review process]

380

381 **Disclaimer**

382

383 [information redacted to maintain the integrity of the review process]

384

385 **Ethical Considerations**

386

387 [information redacted to maintain the integrity of the review process]

388

389 Reference

390

391 Amri, K. (2021). Character Development in the Teaching and Learning Process at the Langsa
392 State Islamic Institute. *Al-Ikhtibar: Journal of Education* , 8 (1), 62–78.

393 Ariestina, H. (2019). Planting Tolerance Values as Strengthening Character Education in
394 Madrasah Ibtidaiyyah. *WASPADA (Journal of Educational Development Insights)* , 6
395 (2), 1–11.

396 Bogdan, R., & Biklen, SK (1997). *Qualitative research for education* . Allyn & Bacon Boston,
397 MA.

398 Defitrika, F., & Mahmudah, FN (2021). Development of life skills education as character
399 building. *International Journal of Educational Management and Innovation* , 2 (1),
400 116–135.

401 Ferdiawan, E., & Putra, WE (2013). Esq education for children character building based on the
402 philosophy of Javaness in Indonesia. *Procedia-Social and Behavioral Sciences* , 106 ,
403 1096–1102.

404 Gayathri, MS (2020). *The relationship between perceptions of father involvement in parenting
405 and adversity intelligence in overseas students in Yogyakarta* . University of Mercu
406 Buana Yogyakarta.

407 Griffin, P., & Care, E. (2014). *Assessment and teaching of 21st century skills: Methods and
408 approach* . Springer.

409 Gunawan, II, & Gunawan, I. (2019). Develop educational leadership by applying values and
410 ethics to strengthen student character. *5th International Conference on Education and
411 Technology (ICET 2019)* , 23–29.

412 Harmawati, Y., & Abdulkarim, A. (2016). The cultural values of the Dieng Culture Festival
413 tradition as local wisdom to build national character. *Journal of the Urban Society's
414 Arts* , 3 (2), 82–95.

415 Hermino, A., & Arifin, I. (2020). Contextual Character Education for Students in the Senior
416 High School. *European Journal of Educational Research* , 9 (3), 1009–1023.

417 Hook, JN, Farrell, JE, Johnson, KA, Van Tongeren, DR, Davis, DE, & Aten, JD (2017).
418 Intellectual humility and religious tolerance. *The Journal of Positive Psychology* , 12
419 (1), 29–35.

420 Ismail, S., Suhana, S., & Zakiah, QY (2020). Policy analysis of strengthening character
421 education in realizing Pancasila students in schools. *Journal of Educational*

- 422 *Management and Social Sciences* , 2 (1), 76–84.
- 423 Ministry of Religion. (2019). *Decree of the Director General of Islamic Education Number*
424 *7272 of 2019 concerning Guidelines for the Implementation of Religious Moderation*
425 *in Islamic Education* .
- 426 Krumrei-Mancuso, EJ (2018). Intellectual humility's links to religion and spirituality and the
427 role of authoritarianism. *Personality and Individual Differences* , 130 , 65–75.
428 <https://doi.org/https://doi.org/10.1016/j.paid.2018.03.037>
- 429 Kurniawati, R., & Maemonah, M. (2021). Guidance on media literacy and the mainstreaming
430 of religious moderation at PPM-PIN IAIN Surakarta. *Quality* , 9 (2), 311–334.
- 431 Leary, MR, Diebels, KJ, Davisson, EK, Jongman-Sereno, KP, Isherwood, JC, Raimi, KT,
432 Deffler, SA, & Hoyle, RH (2017). Cognitive and interpersonal features of intellectual
433 humility. *Personality and Social Psychology Bulletin* , 43 (6), 793–813.
- 434 Marini, A., Maksum, A., Satibi, O., Edwita, Yarmi, G., & Muda, I. (2019). Model of student
435 character based on character building in teaching learning process. *Universal Journal*
436 *of Educational Research* , 7 (10), 2089–2097.
437 <https://doi.org/10.13189/ujer.2019.071006>
- 438 Muhtifah, L., Prasojo, ZH, Sappe, S., & Elmansyah, E. (2021). The theology of Islamic
439 moderation education in Singkawang, Indonesia: The city of tolerance. *HTS*
440 *Theologiese Studies/Theological Studies* , 77 (4), 10.
- 441 Munawwaroh, A. (2019). Exemplary as a method of character education. *Journal of Islamic*
442 *Education Research* , 7 (2), 141.
- 443 Mutmainah, SU, & Dewi, DA (2021). Reactualization of Pancasila Values and Their
444 Implementation as Efforts to Build National Character. *Edukatif: Journal of*
445 *Educational Sciences* , 3 (2), 611–618.
- 446 Neliwati, N., & Dahlan, Z. (2022). Management Of Strengthening Character Education
447 Activities for Students at State Islamic Religious College in Indonesia (Study On
448 PTKIN In Java and Sumatra). *Islamic Education: Journal of Islamic Education* , 10
449 (02).
- 450 Osman, K., Hiong, LC, & Vebrianto, R. (2013). 21st Century biology: An interdisciplinary
451 approach of biology, technology, engineering and mathematics education. *Procedia-*
452 *Social and Behavioral Sciences* , 102 , 188–194.
- 453 Oviaana, W., & Rijal, F. (2021). The Role of Islamic Higher Education Institution in Developing
454 Students' Character Value. *AL-ISHLAH: Journal of Education* , 13 (1), 570–580.







- 455 [information redacted to maintain the integrity of the review process] .
456 [information redacted to maintain the integrity of the review process]
457 [information redacted to maintain the integrity of the review process]
458 [information redacted to maintain the integrity of the review process]
459 [information redacted to maintain the integrity of the review process]
460 [information redacted to maintain the integrity of the review process]
461 Permana, H., Fauzi, IAH, Hasanah, A., & Arifin, BS (2021). Development of a Character
462 Education Management Model in Schools. *Muntazam: Journal of Islamic Education*
463 *Management* , 2 (01).
464 Pradana, DA, Mahfud, M., Hermawan, C., & Susanti, HD (2020). Nationalism: Character
465 Education Orientation in Learning Development. *Budapest International Research and*
466 *Critics Institute-Journal (BIRCI-Journal) Volume* , 3 , 4026–4034.
467 Purwanto, MR, Mukharrom, T., & Rahmah, PJ (2021). Optimization of Student Character
468 Education through the Islamic Boarding School Program at the Islamic Boarding
469 School of the Islamic University of Indonesia. *Review of International Geographical*
470 *Education Online* , 11 (5).
471 Center for Research and Development. (2021). *Student character index* .
472 Rodriguez, D., Perez, C., Jagersand, M., & Figueroa, P. (2017). A comparison of smartphone
473 interfaces for teleoperation of robot arms. *2017 XLIII Latin American Computer*
474 *Conference (CLEI)* , 1–8. <https://doi.org/10.1109/CLEI.2017.8226383>
475 Rokhman, F., Hum, M., & Syaifudin, A. (2014). Character education for the golden generation
476 of 2045 (national character building for Indonesian golden years). *Procedia-Social and*
477 *Behavioral Sciences* , 141 , 1161–1165.
478 Santika, IWE (2020). Character education in online learning. *Indonesian Values and Character*
479 *Education Journal* , 3 (1), 8–19.
480 Sondakh, DSI, Rahmatullah, AS, Adiyono, A., Hamzah, MZ, Mediteraniainingsih, R., &
481 Kholifah, N. (2022). Integration of language, psychology, and technology and the
482 concept of independence learning in reading characters in Indonesian children's films
483 as media and learning materials in character building for elementary school students-
484 Indonesia. *Linguistics and Culture Review* , 6 (1), 70–88.
485 Spradley, J.P. (2016). *Participant observation* . Waveland Press.
486 Sulastra, MC, & Handayani, V. (2020). Parenting Based on Character Strength and Self-
487 Involvement in Students. *PHILANTHROPY: Journal of Psychology* , 4 (2), 143–157.

- 488 Supa'at, S. (2014). Model of Character Education Policy in Madrasas. *Journal of Islamic*
489 *Education* , 3 (1), 203–225.
- 490 Surya, YF (2017). The Use of the 21st Century Character Education Learning Model in Early
491 Childhood. *Journal of Obsession: Journal of Early Childhood Education* , 1 (1), 52–
492 61.
- 493 Suryadi, B., & Hayat, B. (2021). *Religiosity Concept, Measurement, and Implementation in*
494 *Indonesia* . Bibliosmia by Indonesia.
- 495 Susilawati, S., Aprilianti, D., & Asbari, M. (2022). The Role of Islamic Religious Education in
496 Forming the Religious Character of Students. *Journal of Information Systems and*
497 *Management (JISMA)* , 1 (1), 1–5.
- 498 Tannenbaum, N. (1980). (Spradley) Participant Observation (Book Review). *Anthropological*
499 *Quarterly* , 53 (4), 260.
- 500 Zhang, H., Hook, JN, Farrell, JE, Mosher, DK, Van Tongeren, DR, & Davis, DE (2018). The
501 effect of religious diversity on religious belonging and meaning: The role of intellectual
502 humility. *Psychology of Religion and Spirituality* , 10 (1), 72.
- 503 Zubaidah, S. (2018). Get to know 4C: Learning and Innovation Skills to Face the Revolutionary
504 Era 4.0. *2nd Science Education National Conference* , 13 (October 2018), 1–18.
- 505 Zulela, MS, Neolaka, A., Iasha, V., & Setiawan, B. (2022). How is the Education Character
506 Implemented? The Case Study in Indonesian Elementary School. *Journal of Educational and*
507 *Social Research* , 12 (1), 371.
- 508

Character building training model for young people to strengthen religious moderation



Authors:

Munawir K.¹ 
 Makmur Makmur² 
 Muhammad N.A. Rasyid³ 
 Wahyuddin Naro⁴ 
 Syahrudin Usman⁴ 
 Hadi Pajarianto⁵ 

Affiliations:

¹Department of Islamic Education, Faculty of Tarbiyah and Teacher Training, Universitas Islam Negeri Alauddin Makassar, Gowa, Indonesia

²Department of Islamic Education, Faculty of Tarbiyah and Teacher Training, Institut Agama Islam Negeri Palopo, Palopo, Indonesia

³Department of English and Literature, Universitas Islam Negeri Alauddin Makassar, Makassar, Indonesia

⁴Department of Islamic Education, Faculty of Tarbiyah and Teacher Training, Universitas Islam Negeri Alauddin Makassar, Makassar, Indonesia

⁵Faculty of Teacher Training and Education, Universitas Muhammadiyah Palopo, Palopo, Indonesia

Corresponding author:

Munawir K.,
 munawir.k@uin-alauddin.ac.id

Dates:

Received: 18 Feb. 2023
 Accepted: 13 Sept. 2023
 Published: 30 Nov. 2023

Read online:



Scan this QR code with your smart phone or mobile device to read online.

Student character survey in Indonesia in 2021, on average, produced lower index numbers compared to last year's index results. This research aims to explore the policies and content of Character Building Training (CBT), and the impact of the programme on student character. This research was qualitative, involving informants: 60 students and 8 lecturers, who were selected using purposive and snowball techniques, so that if the data were saturated, collecting the data was considered sufficient. Data were collected through observation and in-depth interviews carried out from June to September 2022. Data analysis was carried out manually using the Discovering Cultural Themes model by carrying out data reduction, data display, and drawing conclusions and verification. The research results show that CBT is implemented through a cycle of CBT campaign, capacity building, and institutionalisation with a nurturing, learning, mentoring, and consulting approach. The content includes attitudes and values, skills, knowledge and moderate integrative insight, as well as amplifying tolerant, open, critical, caring, and creative behaviour, respecting differences, and polite and commendable behaviour. The CBT programme has amplified some aspects: religious character, discipline, politeness, caring for the environment, and patriotism. The greatest and dominant strengthening was in religious character and love of the country. The implication and contribution of this research is the continuation of character education for young people as an instrument to substantiate religious moderation.

Contribution: This research is important theoretically and practically to contribute to the formation of character building in young people in Islamic tertiary institutions. Currently, character education is the main vision of Islamic tertiary institutions in Indonesia, which is associated with religious moderation as one of the priorities in the national medium-term development plan.

Keywords: character; building; training; young; Islamic university; religious moderation.

Introduction

The theme of character building in Indonesia is very important, and this study has two main objectives, namely the policies and content of Character Building Training (CBT), and the impact of CBT on student character. In general, character is related to a person's habits, attitudes and morality (Susilawati et al. 2022a). The ups and downs of a nation's civilisation are largely determined by the moral character and performance of its people. Moral character is related to attitudes such as honesty, tolerance, mutual respect, and other positive attitudes. Meanwhile, performance character is all aspects of an individual's identity, including ways of thinking, attitudes and skills that are internalised and become the individual's habits in carrying out work. In the Indonesian context, the problem of deviant behaviour is still a central issue that must be resolved among millennial youth through education (Zulela et al. 2022). The target of this issue is for the younger generation to have character which is in accordance with the moral and ethical values that apply in society (Santika 2020), with stages of instilling knowledge, confirming feelings, and rationalising actions that will become a person's character (Munawwaroh 2019).

A survey by the Research and Development Center for Religion and Religious Education in Indonesia found that the Student Character Index or Indonesia Indeks Karakter Peserta Didik (IKPD) at the Secondary Education Level in 2019 was 70.70. This value is a composite number of 58 indicators and 22 aspects and components which are grouped into the dimensions of religiosity, nationalism, independence, mutual cooperation and integrity from 34 provinces in Indonesia.

How to cite this article: K, M., Makmur, M., Rasyid, M.N.A., Naro, W., Usman, S. & Pajarianto, H., 2023, 'Character building training model for young people to strengthen religious moderation', *HTS Teologiese Studies/Theological Studies* 79(1), a8552. <https://doi.org/10.4102/hts.v79i1.8552>

Copyright: © 2023. The Authors. Licensee: AOSIS. This work is licensed under the Creative Commons Attribution License.

If you look at this overall score, the IKPD in Indonesia is in the 'high' category, even though it is not yet in the 'very high' category (Puslitbang 2021). Invigorating this index is supported by religiosity, nationalism, independence, mutual cooperation, and integrity. In general, Indonesia still has many cases like brawls between students, promiscuity, narcotics, as well as cases of bullying.

Other problems can be seen from the phenomenon of students' lack of polite behaviour when interacting with the campus community, a decline in academic honesty and responsibility, demonstrations that end in chaos and fights between students, a lack of maintenance and even destruction of learning facilities by students, high levels of unemployment among students, students not creative in looking for work, and the lack of students creating their own jobs after graduating. This problem is still a national problem and needs to be resolved wisely by every university (Oviana & Rijal 2021).

Seeing this, the government made character education a national priority with the birth of the Strengthening Character Education policy (Ariestina 2019), which includes a long process of empowerment movement, namely (*empowering*) the potential of students, the humanisation process (*humanising*), and the civilisation process (*civilising*) (Surya 2017), of Indonesian people who have strong and commendable character (Permana et al. 2021). Thus, educational institutions are a very prominent instrument as a medium for socialising acculturation and enculturation in the context of forming national and state character (Supa'at 2014). Educational institutions at every level must internalise the intensifying of character education. Of course, character education is relevant to both the cultural and religious values that develop in Indonesia.

National character development has become an important national issue in several countries, including Indonesia. Why is that? Because, character is related to the process of coaching and improving behaviour as well as noble values which must certainly be imbued with the values of Pancasila (Harmawati & Abdulkarim 2016), such as mutual cooperation, critical thinking, politeness, and independence. Character development is also an effort to overcome moral decline, national disintegration, and the fading of cultural values (Mutmainah & Dewi 2021). Character is a set of attitudes or traits that can be formed through various activities, such as the process of interaction in social life and/or the process of communication and interaction with family and the environment (Sondakh et al. 2022; Susilawati, Aprilianti & Asbari 2022b). Character will greatly determine how a nation is formed and moves dynamically corresponding to social developments, both internal and external.

In Indonesia, character education is also related to local wisdom whose value can be universal (Pajarianto, Pribadi & Sari 2022a; Pajarianto, Pribadi & Galugu 2023). In Luwu

community as the locus of this research, there are the terms *Pattuppui ri ade'E*, *Mupasanre'i ri syara'E* which are translated as relying on customs, and relying on religious law (Pajarianto 2022b). This local wisdom becomes a patron in developing culture, including informing the character of the Luwu community. Likewise, other communities in Indonesia have local wisdom which originates from the nobility of their culture.

Several research results at State Islamic Universities (PTKIN) in Indonesia show massive interest in the theme of national character. Research at PTKIN in Aceh shows that the character education cycle is implemented with complete synergy between the formulation of vision and mission, curriculum, rules, policies, provision of facilities, and comprehensive evaluation (Oviana & Rijal 2021). Meanwhile, studies at PTKIN in Sumatra and Cirebon on character development were carried out through Ma'had with strict implementation of ethical codes for lecturers, students and employees (Neliwati & Dahlan 2022). Studies at other universities also show that the character education strategy is through habituation, example, advice, rewards and punishment (Amri 2021). This policy is also adopted by several public universities in order to instil moderate character in Muslim and non-Muslim students (Pajarianto & Muhaemin 2020). These previous researches only focussed on the implementation cycle of character education in higher education, not touching on the impact of character education on religious character, discipline, politeness, caring for the environment, and love of the country. This character value is very substantial to know and is the main indicator in character education. This character is internalised starting from preparation, core activities, and the educational process which successfully improve the character of students (Marini et al. 2019).

Several research results show that a person's character, especially religiosity, is directly related to the success of religious moderation, such as tolerance (Hook et al. 2017; Krumrei-Mancuso 2018; Leary et al. 2017; Rodriguez et al. 2017; Zhang et al. 2018). From these results, it can be concluded that the successful implementation of character education will reinforce religious moderation (Muhtifah et al. 2021). It is highly beneficial for young people to create their character so that in social life they will become a pioneer and guide for national unity, instead of feeling self-righteous, easily disbelieving other people, and finding it difficult to be in dialogue with other religions, even ending up in social division. At several State Islamic Institutes (IAIN) in eastern Indonesia, CBT is carried out which is oriented towards developing religious character, discipline, politeness, caring for the environment, and love for the country.

This study will complement several previous researches related to character education in higher education by focussing on input, process, and output. The study focusses on two problems that will be discussed as the main objectives. They are: 'What are the policies and content of Character Building Training?' and 'What is the impact of Character

Building Training on student character?' Based on the results of previous researches, this study will focus on CBT policies and content, and the impact of the programme on student character. The university that is the focus of this research has a programme called CBT which is intended to combine parenting, learning, mentoring, and consulting. This study is an effort to accelerate the achievement of a leading vision in scientific integration characterised by local wisdom.

Methods

This research applied a qualitative descriptive approach. Qualitative research has three main components that are observed. Firstly, the place or research locus is at PTKIN, State Islamic Institute (IAIN), Palopo. Secondly, the actor is playing a certain role. In the context of this research, the actors who are the object of research are all components involved in the CBT programme. Thirdly, the activity (Tannenbaum 1980) was carried out by actors in ongoing social situations.

Determining the data source was carried out by using *purposive sampling*, based on certain characteristics (inclusion criteria) which were closely related to previously known characteristics based on the research objectives. The informants for this research were 60 students and 8 lecturers. Researchers conducted interviews with lecturers, and observed student behaviour based on character indicators using observation sheets.

Data were collected through observation, in-depth interviews and documentation carried out from June to September 2022 in the city of Palopo. The observation used was participant observation. Researchers used observation guidelines to record these activities. To maintain the validity of observations, the author used field notes (Bogdan & Biklen 1997) or commonly called a field notebook. Field notes were used to record various events related to the implementation of CBT.

Data analysis was carried out manually using the Discovering Cultural Themes model. It is to understand the typical symptoms of the previous analysis. This analysis collected various themes, cultural focuses, values and cultural symbols that existed in each domain (Spradley 2016). The use of cultural and social analysis was most appropriate for evaluation and control, because an understanding of national society was one of the components on which the entire cooperation process could rely. Data were analysed through three stages, namely, data reduction, data display, and drawing conclusions and verification.

Result and discussion

Character building training: Policy and content

Character education has become a seedbed for noble religious and cultural values in Indonesia, through the State Islamic Universities (PTKIN) as an official government institution under the auspices of the Ministry of Religion. Technically, the implementation of character education in

organisations within the Ministry of Religion has been amplified by *Minister of Religion Regulation Number 2 of 2020* concerning Implementation of Character Education Strengthening (Penguatan Pendidikan Karakter [PPK]) which states that PPK in the Religious Education through formal channels is carried out at the levels of early childhood, primary, secondary and higher education independently, in an integrated manner in intra-curricular, co-curricular and extracurricular activities. In the context of this research locus, implementing the vision of IAIN Palopo as a tertiary institution that integrates science and local wisdom will be a necessary process. The value and norm system in community culture can be optimised to support the process of continuously reinforcing character education (Hermino & Arifin 2020).

If we look closely, various government policies to implement character strengthening programmes are carried out across ministries. Policies regarding character education include *Law Number 20 of 2003* concerning the National Education System; *Republic of Indonesia Law Number 12 of 2012* concerning Higher Education; *Presidential Regulation Number 87 of 2017* concerning Strengthening Character Education; *Decree of the Director General of Islamic Education Number 7272 of 2019* concerning Guidelines for Implementing Religious Moderation in Islamic Education; and *Decree of the Director General of Islamic Education Number 1595 of 2021* concerning Guidelines for Implementing Ma'had Al-Jami'ah in State Islamic Universities. The context for the existence of this policy is the Nawa Cita mandate contained in point 8, namely mental revolution (Ismail, Suhana & Zakiah 2020). Apart from that, graduates of national educational institutions are required to be able to compete internationally. The implication is that there is urgency for every domestic educational institution, especially universities, to graduate Indonesian human resources of comparable quality to foreign countries. The quality of human resources in Indonesia has become a central issue within educational institutions for the last few decades.

Seeing these internal and external developments, IAIN Palopo as an Islamic higher education institution has carried out a transformation, including formulating a vision and mission that can represent the strength of this institution as an organisation that maintains Islamic values and local culture, as well as carrying out scientific integration unlike other universities. This response is then institutionalised into a CBT programme that students must take part in.

Figure 1 shows how the CBT flow is formed, starting from various government policies to approving character. The first process begins with a central government policy that mainstreams character education which is factually capable of invigorating students' character (Gunawan & Gunawan 2019; Purwanto, Mukharrom & Rahmah 2021). This policy then becomes the vision of an institution that wants to integrate science and local wisdom. In several studies, local wisdom is a noble value that confirms the character of students and society in general (Pajarianto 2018, 2022a,

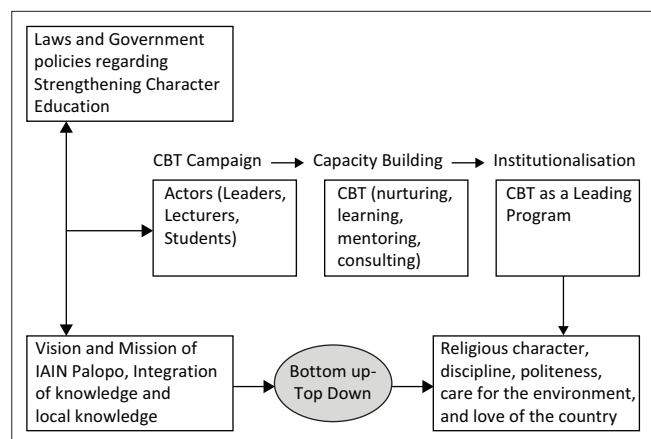
2022b; Pajarianto, Pribadi & Sari 2022b; Pajarianto & Junaidi 2020; Pajarianto & Muhaemin 2020). This character contains moderate values which are characteristic of the implementation of Islamic values in Indonesia.

In the second stage, it involves actors including leaders, lecturers and students in socialising and mainstreaming CBT. The involvement of all parties in character education is highly crucial to ensure the sustainability and success of this programme as the main pillar of character learning in higher education (Pradana et al. 2020). The third stage is building capacity which is carried out by nurturing, learning, mentoring, and consulting which is essential to reinforce student character (Gayatri 2020; Sulastra & Handayani 2020). In the fourth stage, CBT is institutionalised as one of IAIN Palopo's leading programmes.

Character Building Training programme is a policy at PTKIN which we consider to be useful for developing student character. This activity is mandatory for students to participate in. This policy applies to this day even though there are modifications to the form of training with the aim of moulding Islamic character for students. The aim of this CBT programme is for students to have Islamic character. We hope that students will not only be intellectually intelligent but also emotionally and spiritually intelligent (AP, MH, NS, interview; 2022).

In the fifth stage, an evaluation is carried out on the enculturation of student characters which are expected to grow and be developed in CBT activities, including religiosity, discipline, politeness, caring for the environment and love of the country. This character is a differentiation between IAIN Palopo and other universities that have the same programme and educational level. The process of implementing CBT is carried out both *bottom up* and *top down* which complement each other. The centralised CBT programme is supported by statutory regulations, but technically it still takes into account the socio-religious characteristics of each environment.

Technically, the Ministry of Religion has released *Decree of the Director General of Islamic Education Number 7272 of*



CBT, Character Building Training.

FIGURE 1: Character Building Training model flow in character formation.

2019 concerning Guidelines for Implementing Religious Moderation in Islamic Education (Kemenag 2019), described in the form of technical policies at the level of Islamic educational institutions. The content of the CBT material has been prepared based on the Indonesian National Qualifications Framework (KKNI). Learning outcomes include attitudes and values, skills, knowledge, moderate and integrative insight. The content and learning outcomes are presented in Table 1.

From Table 1, it can be concluded that in terms of attitudes and values the learning outcomes of the CBT programme are tolerant, open, critical, caring, creative, respecting differences, and behaving politely and commendably, which are pertinent in the 21st century (Zubaidah 2018). The five main domains of 21st century skills are digital literacy, intensive thinking, effective communication, high productivity, and spiritual and moral values (Osman, Hiong & Vebrianto 2013). Griffin and Care (2014) classify 21st century skills and attitudes as ways to think (knowledge, critical and creative thinking), ways to learn (literacy and soft skills), and ways to learn with others (personal, social, and civic responsibilities). The learning outcomes have also cultivated the insight into integrative religious moderation.

Thus, CBT is a crucial programme in higher education institutions in Indonesia, because it is related to character education which indubitably determines the future of a nation. Through policies from the central government and as expounded by universities, this programme has been running in accordance with the characteristics of each environment. This is a good practice developed by universities, but there is still a lot of work that must be completed to ensure that the process of cultivating character values is ongoing and sustainable. Apart from that, there is an urgent need for policies that are more comprehensive and rely on local wisdom to answer the challenges of an increasingly complex era, starting from issues that threaten the integrity and future of the nation to global competition. This policy will be the basis for formulating more concrete steps so that the cultivation of the main values for the formation of national character can be carried out effectively and comprehensively.

TABLE 1: Learning outcomes of character building training.

Number	Learning outcomes	Description
1.	Attitudes and values	These attitudes and values are reflected in the practice and implementation of the knowledge they have learned in the form of daily attitudes and behaviour, for example be tolerant, open, critical, caring, creative, respect differences, and behave politely and commendably.
2.	Skills	Having the skills to be a congregational prayer leader, lead congregational prayers, read the Qur'an fluently and eloquently, take care of corps, read the yellow book and understand it, and can lead worship practices in daily life. Apart from being skilled in the religious field, they are skilled in the fields of language, arts and social affairs.
3.	Knowledge	Having mastery of science and knowledge and religion (Islam) according to the specified competencies, such as mastery and understanding of <i>tajwid</i> , <i>fiqh</i> , <i>tafsir</i> , creed, morals, Sufism, and so on.
4.	Moderate and integrative insight	Having moderate insight into religious thought and behaviour (i.e. tolerance, non-violence, openness or local wisdom, and national commitment) while also having the competence to apply knowledge and skills in an integral (integrated) manner.

Source: Ma'had al-Jami' Curriculum IAIN Palopo, 2021.

Character building training: Impact on students

The CBT character education programme aims to ensure that students have good character. There are at least five characters that we always teach students while they are taking part in the CBT programme. Firstly, religious character, by teaching students to carry out activities of a religious nature, for example praying the Dhuha prayer together, even though before the pandemic we taught them to always pray at night. Secondly, politeness in behaviour that reflects noble morals. Thirdly, discipline. Students must not arrive late. Fourthly, caring about the environment. We teach students to always care for the environment. We teach students to always care about the environment. The indicator is that students must not litter, neatly arrange shoes, sandals and the Islamic boarding school garden. Finally, the last character is substantiating national values with love of the country.

Figure 2 shows that 51 people (85%) have high religiosity while 15 people (15%) are in the moderate category. In the discipline aspect, as many as 50 people (83%) are in the high category, 8 people (13%) are in the medium category, and 2 people (4%) are in the low category. Meanwhile, in the politeness aspect, there are 37 people (62%) in the high category, 18 people (30%) in the medium category, and 5 people (8%) in the low category. Regarding the character of caring for the environment, 45 people (75%) are in the high category, 13 people (22%) are in the medium category, and 2 people (4%) are in the low category. Meanwhile, regarding the character of patriotism, 58 people (96%) are in the high category, and 20 people (4%) are in the medium category.

In these data, religiosity and love of country are the characters with the most dominant values. This is supported by the results of other researches also, where Muslim student respondents in this study have high level of religiosity, 58.7% and 41.3% have low religiosity. Meanwhile, based on gender, women tend to have high religiosity when compared to men, with a percentage of 61.1% compared to 46.9%, respectively (Suryadi & Hayat 2021). Likewise, strengthening various literacy supported by adequate religiosity has succeeded in campaigning for friendly, polite and tolerant Islamic values (Kurniawati & Maemonah 2021).

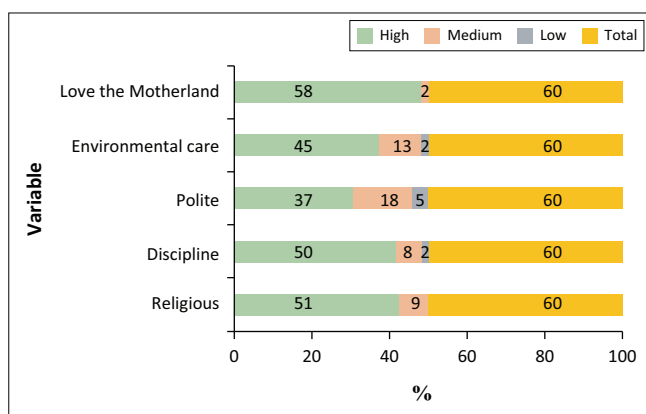


FIGURE 2: Results of observing the characters of Character Building Training participating students.

Apart from that, these data concur with the results of in-depth interviews conducted with lecturers and students regarding the impact of CBT on character development. The results of the interview are presented in Table 2.

From Table 2, it can be inferred that lecturers and students provide reinforcement of previous data that CBT has positive impacts on reinforcing student character which is implemented concretely in life on campus. Regarding religious character, students are more diligent in praying in congregation, reading the Qur'an, and actively participating in voicing religious moderation. Likewise, the discipline aspect has amplified with indicators of increasing the percentage of attendance at lessons, stopping activities during prayer time, and fulfilling guidance appointments with lecturers. In terms of politeness, students say hello when they meet a lecturer or start a conversation, and dress neatly. Meanwhile, reinforcing the character of caring for the environment means that students actively carry out social service activities by cleaning the surrounding environment and throwing rubbish in its place. In the aspect of the character of patriotism, students sing the national anthem, respect the flag, recognise Pancasila as the basis of the country, and invigorate moderate Islam which is the jargon of the Ministry of Religion.

Besides, the CBT programme also internalises attitudes and values originating from local wisdom. Firstly, *sipakatau* [mutual respect]. This attitude forms the tolerance that the young generation in Indonesia which is multi-ethnic, multi-religious and multi-cultural, must have. Secondly, *sipakalebbi* [treating people well]. This is the intelligence of the younger generation in placing humanity in a high position after the relationship with God. Next, *sipakainge* [reminding each other] is part of the critical attitude of the younger generation which must be instilled through CBT

TABLE 2: Findings on character strengthening of Character Building Training participants.

Number	Character	Findings	Data source
1.	Religious	<ul style="list-style-type: none"> The percentage of congregational prayers has increased Read the Qur'an regularly Deposit memorisation Active in voicing religious moderation 	Informants 2, 4, 5, 7, 8, 9, 11, 13, 18, 46
2.	Discipline	<ul style="list-style-type: none"> The percentage of student attendance increased Stop activities during the call to prayer at the mosque Fulfil guidance appointments with lecturers 	Informants 15, 16, 18, 21, 22, 24, 52, 53, 54
3.	Polite	<ul style="list-style-type: none"> Say hello before speaking Students are more polite in speaking Dress neatly and politely when studying 	Informants 1, 3, 10, 14, 20, 56
4.	Environmental care	<ul style="list-style-type: none"> Work together to clean the environment Cleaning places of worship Throw away rubbish in its place 	Informants 23, 25, 27, 30, 50, 60
5.	Love the Motherland	<ul style="list-style-type: none"> Singing the national anthem Salute the national flag Recognising Pancasila as the basis of the state Actively voicing moderate Islam Caring for diversity 	Informants 5, 6, 8, 10, 13, 15, 17, 20, 24, 59, 57, 55, 51

activities. These three attitudes are a consequential part of the appeal of CBT at PTKIN. This result is reinforced by the results of other researches which believe in the strength of educational institutions as centres of excellence in preparing superior characters. This belief encourages everyone to be ready to face global challenges, and Indonesia will become a very strong nation in all fields in 2045 or 100 years after independence (Rokhman, Hum & Syaifudin 2014). Also, the culture developed in educational institutions is able to provide reinforcement for self-development (Defitrika & Mahmudah 2021), and because cultural values will always be attached to humans whenever and wherever they are (Ferdiawan & Putra 2013).

Thus, CBT can redouble the character of students in higher education. In this case, the content of CBT material includes *ruhaniah*, *aqliyah* (spiritual) and physical aspects. These three characteristics are a reflection of integration of religious knowledge, general knowledge, skills and national insight (moderation) as per the vision of IAIN Palopo. The CBT programme implements integration of various kinds of knowledge and skills from theoretical (in-class) and practical (daily life) aspects. This means that CBT is carried out in an integrated, interconnected and mutually supportive manner. This needs to be continued, optimised, deepened and even expanded so that it intensifies national character in education. For this reason, from now on it is necessary to implement the Character Education Strengthening Movement by paying attention to the principles of continuity and sustainability.

Conclusion

Character education is a national policy included in statutory regulations and described in the vision and mission of higher education. The implementation cycle refers to a CBT campaign, capacity building, and institutionalisation involving leaders, lecturers, and students with a nurturing, learning, mentoring, and consulting approach. Meanwhile, the content includes moderate integrative attitudes and values, skills, knowledge and insight, as well as reinforcing tolerant, open, critical, caring, creative behaviour, respecting differences, and polite and commendable behaviour. Besides, values originating from local wisdom such as the characteristics of *sipakatau* [mutual respect], *sipakalebbi* [treating people well], and *sipakainge* [reminding each other] are novelty from this research. Data analysis shows that CBT has reinforced religious character, discipline, politeness, caring for the environment and love of the country. The greatest and dominant strengthening is religious character and love of the country.

This research has limitations because it is carried out on small and limited loci. However, it can be adapted to loci that have the same characteristics. The researcher recommends that further studies be continued at a wider locus, so that they can offer complete recommendations for the sustainability of character education which is very significant for a nation.

Acknowledgements

Thanks to all parties who have contributed to this research, especially to the research team and informants.

Competing interests

The author(s) declare that they have no financial or personal relationship(s) that may have inappropriately influenced them in writing this article.

Authors' contributions

M.K. is the research coordinator who is responsible for conducting research. M.M. is in charge of doing analysis and administration, M.N.A.R. is in charge of visualising and reading scripts, W.N. is in charge of curating data, S.U. is in charge of formal analysis and supervision, and H.P. is in charge of visualising using software.

Ethical considerations

This article followed all ethical standards for research.

Funding information

This research did not receive any funding from institutions or donor agencies.

Data availability

Data sharing is not applicable to this article as no new data were created or analysed in this study.

Disclaimer

The views and opinions expressed in this article are those of the authors and do not necessarily reflect the official policy or position of any affiliated agency of the authors, and the publisher.

References

- Amri, K., 2021, 'Pembinaan Karakter Pada Proses Belajar Mengajar di Institut Agama Islam Negeri Langsa', *Al-Ikhtibar: Jurnal Ilmu Pendidikan* 8(1), 62–78. <https://doi.org/10.32505/ikhtibar.v8i1.625>
- Ariestina, H., 2019, 'Penanaman Nilai Toleransi Sebagai Penguatan Pendidikan Karakter Di Madrasah Ibtidaiyyah', *WASPADA (Jurnal Wawasan Pengembangan Pendidikan)* 6(2), 1–11.
- Bogdan, R. & Biklen, S.K., 1997, *Qualitative research for education*, Allyn & Bacon, Boston, MA.
- Defitrika, F. & Mahmudah, F.N., 2021, 'Development of life skills education as character building', *International Journal of Educational Management and Innovation* 2(1), 116–135. <https://doi.org/10.12928/ijemi.v2i1.3195>
- Ferdiawan, E. & Putra, W.E., 2013, 'Esq education for children character building based on phylosophy of Javaness in Indonesia', *Procedia-Social and Behavioral Sciences* 106, 1096–1102. <https://doi.org/10.1016/j.sbspro.2013.12.123>
- Gayatri, M.S., 2020, *Hubungan antara persepsi terhadap keterlibatan ayah dalam pengasuhan dengan adversity intelligence pada mahasiswa rantau di Yogyakarta*, Universitas Mercu Buana, Yogyakarta.
- Griffin, P. & Care, E., 2014, *Assessment and teaching of 21st century skills: Methods and approach*, Springer, Dordrecht.
- Gunawan, I.I. & Gunawan, I., 2019, 'Develop educational leadership by applying values and ethics to strengthen student character', *5th International Conference on Education and Technology (ICET 2019)*, Malang, October 04–05, 2019, pp. 23–29.
- Harmawati, Y. & Abdulkarim, A., 2016, 'Nilai budaya tradisi Dieng Culture Festival sebagai kearifan Lokal untuk Membangun karakter bangsa', *Journal of Urban Society's Arts* 3(2), 82–95. <https://doi.org/10.24821/jousa.v3i2.1477>

- Hermiono, A. & Arifin, I., 2020, 'Contextual character education for students in the senior high school', *European Journal of Educational Research* 9(3), 1009–1023. <https://doi.org/10.12973/eu-jer.9.3.1009>
- Hook, J.N., Farrell, J.E., Johnson, K.A., Van Tongeren, D.R., Davis, D.E. & Aten, J.D., 2017, 'Intellectual humility and religious tolerance', *The Journal of Positive Psychology* 12(1), 29–35. <https://doi.org/10.1080/17439760.2016.1167937>
- Ismail, S., Suhana, S. & Zakiah, Q.Y., 2020, 'Analisis kebijakan penguatan pendidikan karakter dalam mewujudkan pelajar Pancasila di sekolah', *Jurnal Manajemen Pendidikan Dan Ilmu Sosial* 2(1), 76–84. <https://doi.org/10.38035/jmpis.v2i1.388>
- Kemenag, 2019, *Keputusan Direktur Jenderal Pendidikan Islam Nomor 7272 Tahun 2019 Tentang Pedoman Implementasi Moderasi Beragama pada Pendidikan Islam*, Kementerian Agama RI, Jakarta.
- Krumrei-Mancuso, E.J., 2018, 'Intellectual humility's links to religion and spirituality and the role of authoritarianism', *Personality and Individual Differences* 130, 65–75. <https://doi.org/10.1016/j.paid.2018.03.037>
- Kurniawati, R. & Maemonah, M., 2021, 'Bimbingan literasi media dan pengaruh utama moderasi beragama di PPM-PIN IAIN Surakarta', *Quality* 9(2), 311–334. <https://doi.org/10.21043/quality.v9i2.11255>
- Leary, M.R., Diebels, K.J., Davison, E.K., Jongman-Sereno, K.P., Isherwood, J.C., Raimi, K.T. et al., 2017, 'Cognitive and interpersonal features of intellectual humility', *Personality and Social Psychology Bulletin* 43(6), 793–813. <https://doi.org/10.1177/0146167217697695>
- Marini, A., Maksam, A., Satibi, O., Edwita, Yarmi, G. & Muda, I., 2019, 'Model of student character based on character building in teaching learning process', *Universal Journal of Educational Research* 7(10), 2089–2097. <https://doi.org/10.13189/ujer.2019.071006>
- Muhtifan, L., Prasajo, Z.H., Sappe, S. & Elmansyah, E., 2021, 'The theology of Islamic moderation education in Singkawang, Indonesia: The city of tolerance', *HTS Teologiese Studies/Theological Studies* 77(4), 10. <https://doi.org/10.4102/hts.v77i4.6552>
- Munawaroh, A., 2019, 'Keteladanan sebagai metode pendidikan karakter', *Jurnal Penelitian Pendidikan Islam* 7(2), 141. <https://doi.org/10.36667/jppi.v7i2.363>
- Mutmainah, S.U. & Dewi, D.A., 2021, 'Reaktualisasi Nilai Pancasila dan Implementasinya Sebagai Upaya Pembangunan Karakter Bangsa', *Edukatif: Jurnal Ilmu Pendidikan* 3(2), 611–618. <https://doi.org/10.31004/edukatif.v3i2.396>
- Neliwati, N. & Dahlan, Z., 2022, 'Management of strengthening character education activities for students at state Islamic Religious College in Indonesia (Study On PTKIN In Java and Sumatra)', *Edukasi Islami: Jurnal Pendidikan Islam* 10(2), 957–976.
- Osman, K., Hiong, L.C. & Vebrianto, R., 2013, '21st century biology: An interdisciplinary approach of biology, technology, engineering and mathematics education', *Procedia-Social and Behavioral Sciences* 102, 188–194. <https://doi.org/10.1016/j.sbspro.2013.10.732>
- Oviana, W. & Rijal, F., 2021, 'The role of Islamic higher education institution in developing students' character value', *AL-ISHLAH: Jurnal Pendidikan* 13(1), 570–580. <https://doi.org/10.35445/alishlah.v13i1.418>
- Pajarianto, H., 2018, *Muhammadiyah Pluralis: Relasi Muslim Puritan, Kristen, dan Aluk Todolo dalam Pendidikan Keluarga dan Falsafah Tongkonan*, UMS Press, Surakarta.
- Pajarianto, H., 2022a, 'Interreligious relation: Position of women in strengthening Christian and Muslim bonds', *HTS Teologiese Studies/Theological Studies* 78(4), 7. <https://doi.org/10.4102/hts.v78i4.7096>
- Pajarianto, H., 2022b, 'Pattuppui Ri Ade'e, Pasanre'i Ri Syara'E: Character education based on religious values and local wisdom', *Edukasi Islami: Jurnal Pendidikan Islam* 11(01), 229–246. <https://doi.org/10.30868/ei.v11i01.1866>
- Pajarianto, H. & Junaidi, J., 2020, 'The contribution of family edification, mutualism, and kinships against the tolerance values in Tana Toraja', *KARSA: Journal of Social and Islamic Culture* 28(2), 234–251. <https://doi.org/10.19105/karsa.v28i2.3483>
- Pajarianto, H. & Muhaemin, M., 2020, 'Al-Islam Kemuhmadiyahannya bagi Non-Muslim: Studi Empirik Kebijakan dan Model Pembelajaran', *Al-Qalam* 26(2), 237–244. <https://doi.org/10.31969/alq.v26i2.853>
- Pajarianto, H., Pribadi, I. & Galugu, N.S., 2023, 'Youth religious moderation model and tolerance strengthening through intellectual humility', *HTS Teologiese Studies/Theological Studies* 79(1), a8196. <https://doi.org/10.4102/hts.v79i1.8196>
- Pajarianto, H., Pribadi, I. & Sari, P., 2022a, 'Tolerance between religions through the role of local wisdom and religious moderation', *HTS Teologiese Studies/Theological Studies* 78(4), 8. <https://doi.org/10.4102/hts.v78i4.7043>
- Pajarianto, H., Pribadi, I. & Sari, P., 2022b, 'Tolerance between religions through the role of local wisdom and religious moderation', *HTS Teologiese Studies/Theological Studies* 78(4), 7043. <https://doi.org/10.4102/hts.v78i4.7043>
- Permana, H., Fauzi, I.A.H., Hasanah, A. & Arifin, B.S., 2021, 'Pengembangan Model Manajemen Pendidikan Karakter di Sekolah', *Muntazam: Jurnal Manajemen Pendidikan Islam* 2(1), 41–55.
- Pradana, D.A., Mahfud, M., Hermawan, C. & Susanti, H.D., 2020, 'Nasionalism: Character education orientation in learning development', *Budapest International Research and Critics Institute-Journal (BIRCI-Journal)* 3(4), 4026–4034. <https://doi.org/10.33258/birci.v3i4.1501>
- Purwanto, M.R., Mukharrom, T. & Rahmah, P.J., 2021, 'Optimization of student character education through the pesantren program at the Islamic Boarding School of the Universitas Islam Indonesia', *Review of International Geographical Education Online* 11(5), 2829–2837.
- Puslitbang, 2021, *Indeks karakter siswa*, Pusat Penelitian dan Pengembangan Kementerian Agama RI, Jakarta.
- Rodriguez, D., Perez, C., Jagersand, M. & Figueroa, P., 2017, 'A comparison of smartphone interfaces for teleoperation of robot arms', *2017 XLIII Latin American Computer Conference (CLEI)*, Cordoba, September 04–08, 2017, pp. 1–8.
- Rokhman, F., Hum, M. & Syaifudin, A., 2014, 'Character education for golden generation 2045 (national character building for Indonesian golden years)', *Procedia-Social and Behavioral Sciences* 141, 1161–1165. <https://doi.org/10.1016/j.sbspro.2014.05.197>
- Santika, I.W.E., 2020, 'Pendidikan karakter pada pembelajaran daring', *Indonesian Values and Character Education Journal* 3(1), 8–19. <https://doi.org/10.23887/ivej.v3i1.27830>
- Sondakh, D.S.I., Rahmatullah, A.S., Adiyono, A., Hamzah, M.Z., Riwayatningsih, R. & Kholifah, N., 2022, 'Integration of language, psychology, and technology and the concept of independence learning in reading characters in Indonesian children's films as media and learning materials in character building for elementary school students-indonesia', *Linguistics and Culture Review* 6(1), 70–88. <https://doi.org/10.21744/lingcure.v6n1.1963>
- Spradley, J.P., 2016, *Participant observation*, Waveland Press, Long Grove, IL.
- Sulastra, M.C. & Handayani, V., 2020, 'Pengaruh Berbasis Kekuatan Karakter Dan Keterlibatan Diri Pada Mahasiswa', *PHILANTHROPY: Journal of Psychology* 4(2), 143–157. <https://doi.org/10.26623/philanthropy.v4i2.2188>
- Supa'at, S., 2014, 'Model Kebijakan Pendidikan Karakter di Madrasah', *Jurnal Pendidikan Islam* 3(1), 203–225. <https://doi.org/10.14421/jpi.2014.31.203-225>
- Surya, Y.F., 2017, 'Penggunaan Model Pembelajaran Pendidikan Karakter Abad 21 pada Anak Usia Dini', *Jurnal Obsesi: Jurnal Pendidikan Anak Usia Dini* 1(1), 52–61. <https://doi.org/10.31004/obsesi.v1i1.31>
- Suryadi, B. & Hayat, B., 2021, *Religiusitas Konsep, Pengukuran, dan Implementasi di Indonesia*, Bibliosima, Jakarta.
- Susilawati, E., Lubis, H., Kesuma, S. & Pratama, I., 2022, 'Antecedents of student character in higher education: The role of the Automated Short Essay Scoring (ASES) digital technology-based assessment model', *Eurasian Journal of Educational Research* 2022(98), 203–220. <https://doi.org/10.14689/ejer.2022.98.013>
- Susilawati, S., Aprilianti, D. & Asbari, M., 2022, 'The role of Islamic Religious Education in forming the religious character of students', *Journal of Information Systems and Management (JISMA)* 1(1), 1–5.
- Tannenbaum, N., 1980, '(Spradley) participant observation (Book Review)', *Anthropological Quarterly* 53(4), 260. <https://doi.org/10.2307/3318111>
- Zhang, H., Hook, J.N., Farrell, J.E., Mosher, D.K., Van Tongeren, D.R. & Davis, D.E., 2018, 'The effect of religious diversity on religious belonging and meaning: The role of intellectual humility', *Psychology of Religion and Spirituality* 10(1), 72. <https://doi.org/10.1037/rel0000108>
- Zubaidah, S., 2018, 'Mengenal 4C: Learning and innovation skills untuk Menghadapi Era Revolusi 4.0', *2nd Science Education National Conference* 13, 1–18.
- Zulela, M.S., Neolaka, A., Iasha, V. & Setiawan, B., 2022, 'How is the education character implemented? The case study in Indonesian elementary school', *Journal of Educational and Social Research* 12(1), 371. <https://doi.org/10.36941/jesr-2022-0029>