

# Marwati M

## 5\_IJCE-V12I4P119

 Quick Submit Quick Submit Universitas Islam Negeri Alauddin Makassar

---

### Document Details

**Submission ID**

trn:oid:::1:3248617712

**Submission Date**

May 13, 2025, 1:53 PM GMT+7

**Download Date**

May 13, 2025, 1:56 PM GMT+7

**File Name**

5\_IJCE-V12I4P119\_30\_April\_2025.pdf

**File Size**

2.1 MB

**22 Pages****9,402 Words****53,470 Characters**

# 0% Overall Similarity

The combined total of all matches, including overlapping sources, for each database.





## Filtered from the Report

- Bibliography
- Quoted Text
- Small Matches (less than 8 words)




## Exclusions

- 16 Excluded Matches

## Match Groups

-  **3** Not Cited or Quoted 0%  
Matches with neither in-text citation nor quotation marks
-  **0** Missing Quotations 0%  
Matches that are still very similar to source material
-  **0** Missing Citation 0%  
Matches that have quotation marks, but no in-text citation
-  **0** Cited and Quoted 0%  
Matches with in-text citation present, but no quotation marks

## Top Sources

- 0%  Internet sources
- 0%  Publications
- 0%  Submitted works (Student Papers)

## Integrity Flags

### 0 Integrity Flags for Review

No suspicious text manipulations found.

Our system's algorithms look deeply at a document for any inconsistencies that would set it apart from a normal submission. If we notice something strange, we flag it for you to review.

A Flag is not necessarily an indicator of a problem. However, we'd recommend you focus your attention there for further review.

## Match Groups

- 3** Not Cited or Quoted 0%  
Matches with neither in-text citation nor quotation marks
- 0** Missing Quotations 0%  
Matches that are still very similar to source material
- 0** Missing Citation 0%  
Matches that have quotation marks, but no in-text citation
- 0** Cited and Quoted 0%  
Matches with in-text citation present, but no quotation marks

## Top Sources

- 0% Internet sources
- 0% Publications
- 0% Submitted works (Student Papers)

## Top Sources

The sources with the highest number of matches within the submission. Overlapping sources will not be displayed.

- 1** Internet  
**ijettjournal.org** <1%
- 2** Publication  
**Marwati, Baharuddin Hamzah, Nasruddin, Hartawan. "Chapter 45 Typology of P...** <1%
- 3** Internet  
**www.acsp.org** <1%

Original Article

# Transformation of Structural Elements in Subsidized Housing: A Case Study in Moncongloe-Maros, Indonesia

Marwati<sup>1</sup>, Baharuddin Hamzah<sup>2</sup>, Nasruddin<sup>3</sup>, Hartawan<sup>4</sup>

<sup>1</sup>Department of Architecture, Faculty of Sains and Technology, Universitas Islam Negeri Alauddin, Makassar, Indonesia.

<sup>2,3,4</sup>Department of Architecture, Faculty of Engineering, Hasanuddin University, Makassar, Indonesia.

<sup>1</sup>Corresponding Author : [marwati.adalle@uin-alauddin.ac.id](mailto:marwati.adalle@uin-alauddin.ac.id)

Received: 14 February 2025

Revised: 16 March 2025

Accepted: 17 April 2025

Published: 30 April 2025

**Abstract** - Subsidized housing in the peri-urban areas of Makassar, including the Moncongloe region, was constructed in a standardized manner. However, within less than five years of occupancy, these houses underwent significant changes in spatial configuration and structural elements despite regulations prohibiting modifications during the first five years. This study aims to assess the structural alterations in subsidized housing post-occupancy. A purposive sampling method was employed, selecting cases where modifications were evident but still retained the original housing form and where homeowners were willing to participate in the research. We analyzed the data descriptively and categorized them based on the structural aspects of the spatial layout, the methods of modification, and the altered structural elements. The findings indicate that residents tend to implement structural changes, particularly in the addition of foundations, columns, walls, and floors, to accommodate the evolving needs of the household. These modifications were more prevalent in horizontal structures rather than vertical ones, as residents sought to expand space and functionality without significant structural alterations. The study underscores the importance of designing flexible and modular houses, as the original designs often fail to meet the residents' needs. According to the research, adaptive design principles should be used to make changes without breaking the rules. This would make people happier inside the buildings. The main contribution of this study is to give more information about the changes made to the structures of subsidized housing and to help designers and policymakers develop more sustainable and user-centered housing solutions.

**Keywords** - Subsidized housing, Structural changes, Flexible design, Spatial layout, Sustainable housing.

## 1. Introduction

Exploring affordable housing is a significant gap in research, and one example is the subsidized Housing Report provided by the government in the Mamminasata area or region surrounding Makassar City. The primary objective of the housing report is to provide significant assistance to low- and middle-income populations identified as economically active and able to achieve self-sustainability. As for the subsidized housing grants, the government allocates 25 per cent for subsidized housing and 75 per cent for non-subsidized housing [1, 2]. Government Regulation 121/2021 also directs the housing report to provide housing to economically disadvantaged groups. The issue that emerges is that residents' preferences often tend to differ from what the government and the developers ideally had in mind [3].

The design is meant to counter specific housing affordability issues; however, the absence of more geared enabling laws, such as the Ministry of Public Works and Public Housing Regulations 242/2020, limiting alterations on subsidized housing units within the first five years, often posed restrictions. This limited a single available unit that does

not meet user needs [5]. These houses ought to be able to transform themselves to conform to contemporary needs. This study seeks to fill the gap of the lack of adaptability of subsidized housing with the functional needs of the users. This study focuses on the gap in the residents' functional needs and the changing layout of their homes compared to the subsidized housing's permanent form. The restrictions imposed on residents for making any alterations by Regulation No. 242/2020 for the first five years further complicate the problem. Through these government restoration regulations, residents could use and change the design and function of their residence without breaching the rules.

This research provides a new approach to the design of subsidized housing to make it more flexible and responsive to the occupants' needs over time. It contributes to the body of knowledge on adaptable home designs. It demonstrates the importance of intervention in improving the residents' satisfaction in the Moncongloe area, which has unique demographic and economic characteristics. The research also adds new insights beyond the pre-determined flexible subsidized housing design and proposes further restrictions on

enhancing the tenants' welfare within the boundaries of the existing policies.

## 2. Literature Review

### 2.1. Home Adaptation

As with any other case, modification of home structures has been studied in-depth. Two or more different ways a space can be designed for its occupants have become one of the most important guidelines for building design principles. Three main assumptions argue for the flexibility of residential architecture in housing design. First, easily adjustable design resolves functional obsolescence by modifying spaces to meet the occupants' needs over time. This notion can be accomplished by flexible room layouts and the creation of demountable structures that make it possible to change a building as per the changing demands of its dwellers [6]. In the second place, sustainability can be augmented by providing inhabitants with the flexibility to modify spaces to meet various functional and sociocultural requirements, which can come from young children, extended families, or people with special needs [7]. Third, the provision of flexibility in design is another form of customization that can be done without changing the basic design, which includes the space being allowed to change in layout and functionality [8, 9]. Friedman [10] claims that modular construction systems are important because they allow for building shells that can be adjusted to serve the different needs of people. Pombo et al. [11] learned during their study on remodelling strategies in Madrid that flexibility in structure design increases performance and user satisfaction over time. Investing in new home designs will likely improve residents' quality of life and help build more environmentally friendly residential communities. These results highlight the importance of having more flexible housing solutions, especially for subsidized government housing, where standardized design often leads to dissatisfaction among residents [12]. The inability to customize rigid housing designs to meet changing needs and growing families severely affects people's contentment and well-being.

### 2.2. Modular Flexibility and Adaptability

The integration of home design flexibility and modular adaptability has been examined regarding their relevance to the attention given to the occupants' needs. The case study of Arturo Soria in Madrid showed that the external and internal spaces of the building are structured in such a way that they allow for flexible spatial arrangements to satisfy the needs of the residents [13]. The Casa de las Flores edifice exhibits structural flexibility, where social adaptability is made possible by the lack of restrictive specific spatial design [14]. Furthermore, modular design enhances the ease of repairing a building, providing greater flexibility and enabling easier changes to be made to the building's parts [15]. This facilitates more community development and the provision of cheap and adaptable housing [16].

The following definitions support the basic two concepts in the housing design problem, which preserve the ability to modify construction without demolishing the original building. The research conducted on the flexible design principles intended to reduce functional obsolescence and modernize the approach to human-centered living spaces suggests that such designs aid in meeting the ever-changing needs of occupants [6]. In addition, adaptive and economical methods are needed to meet the changing needs of users [17]. This also helps the structure in meeting the changing needs of the users. Lastly, "4D design" is said to have promoted the use of adaptive and reusable construction methods while ensuring that design economy and environmental sustainability are met [18]. According to Mulliner et al. [19], housing touches three pillars: affordability, economic, social, and environmental sustainability. These results indicate that the issue of flexible Housing in Indonesia is becoming increasingly urgent as it is necessary to serve the people and their needs without compromising sustainability. To begin with, the design attempts to allow homeowners the flexibility to modify their houses over time while securing the original construction.

### 2.3. Standard Modular Space

"Modular Spaces Design Standard" is aimed as a guide to provide the necessary flexibility in Housing Design. Implementing partial modularization in housing makes arranging spaces to suit resident needs possible while maintaining greater design flexibility. This accelerates construction and permits changes afterwards [20]. In addition, flexibility in the structure is enhanced by the rapid and systematic replacement of Building components, which allows for future changes in user needs [15]. The modular Approach' encourages the integration of horizontal and vertical space with flexible and adaptable layouts to accommodate the requirements of fast-changing situations [21]. 'Adaptable Design' provides easy response in renovation controls alongside regulatory conformance to modify the spatial configuration to suit the tenant's needs [22].

Research shows that household structures ought to be adjusted to best suit the ever-evolving needs of the occupants. Demand for residential accommodation, particularly for low-income countries, is found to be relatively erratic. Considering households' changing needs and functions, residential architecture requires greater attention to spatial flexibility. Housing can respond to changing socioeconomic contexts, family compositions, and structures over time [7, 23].

Standard government housing units are well-known for their monotonous and rigid designs that hardly satisfy the occupants' needs, which is depressing [12]. This dissatisfaction reveals the gap between the people's needs and home design provisions, which are almost non-existent in terms of customization or modification, especially in subsidized housing programs.



Studies indicate that housing designs must be adapted to meet the ever-evolving needs of residents. For example, research shows that the need for residential space is not always static, even in low-income countries. Due to households' continuously changing needs and activities, spatial flexibility has been recognized as essential in housing architecture. With this flexibility, housing can adjust to changes in economic status and evolving family structures [7, 23]. However, government-provided housing typically comes with rigid standardized designs that often do not adapt to the needs of residents, leading to dissatisfaction [12]

#### 2.4. Specific Literature Review and Research Gaps

Even as many reports highlight the relevance of adaptive design, there is scant information about government policies, such as the five-year alteration restriction and how they affect the modification behaviour of the occupants. Furthermore, while the literature accepts the need for design provisions, **very little attention has been paid to the** specific architectural proposals that would meet such unforgiving regulations. This gap suggests the need for research on implementing flexible design within the existing regulatory framework. Such research would target subsidized housing schemes in Moncongloe [1, 24].

This research focuses on identifying the structural patterns resulting from the shifts in function and spatial organization in subsidized housing, with a particular emphasis on Moncongloe after the residents have occupied the units. The new focus of this research is the architectural solutions that allow spatial modifications without infringing existing renovation regulations.

The study is mainly concerned with the patterns of structural changes based on the use of space and the residents' functional requirements. The study of structural patterns based on the function and spatial arrangement of post-occupancy housing is the focus of this study. In addition, this study documents the use of flexible designs in the approaches to address the needs of the occupants within the limitations of the design regulations.

### 3. Materials and Methods

This study employs a qualitative descriptive research methodology. This methodology has established standards for validity and provisional design. The research adopts a case study approach, which involves an in-depth examination of a specific context, a collection of documents, and focused studies [25].

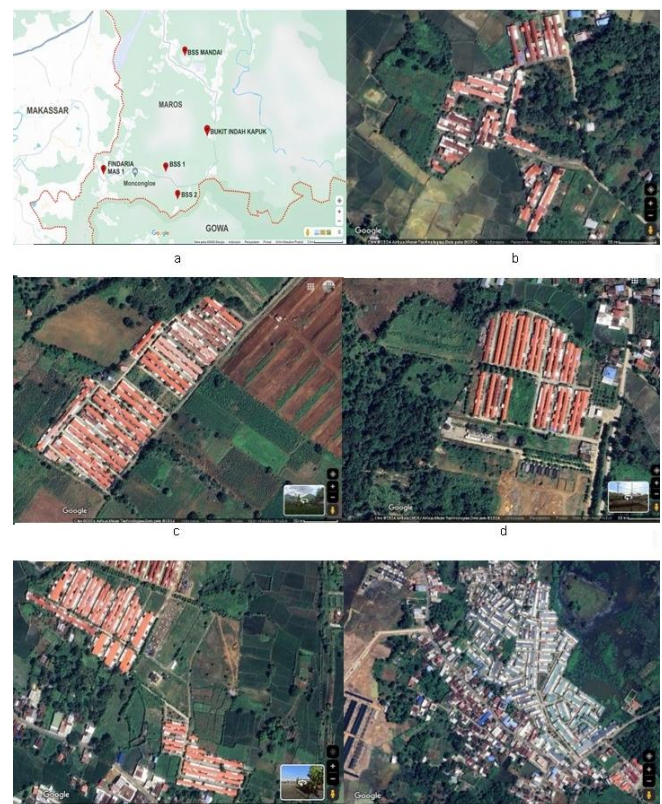
#### 3.1. Research Sample and Data Collection

This research analyzes the changes in structure that give rise to changes in the function and configuration of subsidized housing units using the Moncongloe housing project as a case study after residents have occupied the units. The main goal is to explore architectural options that enable distribution

changes within the existing remodelling boundaries, particularly Regulation No. 242/2020.

The research covers finding structural change patterns phenomena due to spatial function utilization and residents' functional needs. The scope of the study is the change of occupation spatial arrangement after the occupancy and the need for the accommodation design to be more elastic. The study is aimed at evaluating how residents creatively modify their dwellings towards the set boundaries and to what extent such design principles should be leaner to enable such modifications.

The study population consists of simple row-type duplex houses in five housing areas, which, as shown in Figure 1, have been physically altered without having their original form wholly restored. These locations are part of subsidized housing programs within the Mamminasata area, which includes Makassar, Maros, and Gowa, particularly Moncongloe, Maros, Indonesia. The region has a blend of urban and suburban areas and has experienced a significant inflow of middle- to lower-class migrants in the past five years. These programs were started to solve the housing deficit in the area by providing affordable homes to families and individuals with limited financial resources.



**Fig. 1 Research sites: (a) Research location, (b) BSS 1, (c) BSS 2, (d) Bukit Indah Kapuk, (e) BSS Land Mandai, and (f) Findaria Mas 1** (Source: <https://www.google.co.id/maps/search/perumahan+bss/@-5.1297532,119.5481094,13.5z?entry=ttu>)

The housing units in these regions were initially built as standard shelter units to cater for minimum living needs. With time, as residents moved in and formed families, several changed their houses to suit their needs as they evolved. The research sample is purposively selected from those willing to participate in the study [26] to address these dwellings' spatial changes and modifications. The goal is to assess how and to what extent the residents have modified the houses relative to their original form and intended design.

### 3.2. Strategy of Sampling and Participant Choice

For this study segment, the sample strategy was purposive, which is appropriate for investigations where deep understanding is sought from respondents. Inclusion criteria were met by seventy-five dwelling units (Table 1), which are as follows:

- The buildings are part of a subsidized housing program and have been continuously occupied by the original owners since they were built.
- The buildings demonstrably have some form of construction, although some form of the original building remains.
- The buildings studied are of identical type, and the spacing is consistent in the study as they all have a front space of six meters in width.
- Participants were verified through informed consent forms, and they agreed to participate in the study.

Sampling limitations include empty houses, houses with new owners, and potential nonrespondents. These limitations reduced the total sample size but were necessary to ensure and control the data's credibility and reliability.

**Table 1. Population and sample distribution**

Location	Year Built	Number of Houses Built	Population	Sample
BSS 1	2016	122	90	10
BSS 2	2017	200	70	13
Bukit Indah Kapuk	2019	250	60	16
BSS Mandai	2019	235	90	10
Findaria Mas (Type 36)	2019	350	100	21
<b>Total (Houses)</b>			<b>420</b>	<b>75</b>

Secondary data in this study is derived from a comprehensive literature review. This review includes research on modest housing, the structural responses to

evolving spatial needs, and the modifications in housing environments caused by the residents.

This review aims to contextualize the findings within the broader architectural and housing research scope. This helps frame the study within existing knowledge, offering insights into how residential spaces adapt to the changing requirements of their inhabitants and the role of structural flexibility in facilitating these transformations.

### 3.3. Data Sources and Input Observations with Ethics in Mind

The direct observations and semi-structured interviews with the selected homeowners served as the primary data source. Observations captured the changes made to the structures, while the interviews sought to understand how these changes came about, whether the residents were satisfied, and what challenges they faced regarding remodelling restrictions. The following changes were noted:

- The kitchen was expanded into the backyard using light materials such as zinc roofing and hollow steel framing.
- The front yard was changed into commercial yard space (kiosks).
- Children's bedrooms had mezzanine floors added. The area categorized these changes (front, middle, rear, and vertical) by purpose, constitutive, functional, aesthetic, and commercial.

Prior to commencing data collection, the relevant ethics approval was obtained. Each participant was provided a study brief outlining the objectives, their rights, and how their information would be data processed. They were enabled to provide informed consent and made anonymous by assigning codes to each house with no personal identifying information released.

### 3.4. Data Analysis

Other secondary data sources came from a flexible housing literature review where user-initiated alterations and post-occupancy evaluations dominate. The most important sources include Živković et al. [6], Eriksson et al. [20], Magdziak [7] and Sylejmani & Medvegy [23]. This literature review identified the concepts and placed the objective evidence into the broader academic context. An inter-case comparison was made to see how residents with similar layouts modified them due to personal needs or socio-economic factors. The findings were further supported through the literature to check the validity and the contributions made to modern science on adaptable housing issues.

### 3.5. Secondary Data and Literature Integration

Other secondary data sources came from a flexible housing literature review where user-initiated alterations and post-occupancy evaluations dominate. This literature review

identified the concepts and placed the objective evidence into the wider academic context [6, 7, 20, 23]. The combination of primary and secondary information aims to provide an understanding of housing modification in the specific socio-regulatory context of Indonesia, particularly the Moncongloe region.

### 3.6. Initial Unit Floor Plans at the Study Locations

Table two summarizes the information from the six sites researched. Each site has a land area of 60 to 84 m<sup>2</sup> and a first building area of 30 to 42.8 m<sup>2</sup>. The sample size of dwellings differs by area, and the total amount of houses is 75.

Findaria 36 has the largest sample size of 21 houses, while Findaria 45 has the lowest sample size of only five. The variation in sample size illustrates the number of houses that meet the research criteria available at each site.

The data in the table shows the specific measurements for the study units, which varied from 60 to 84 m<sup>2</sup>, and the initial building area, which ranged from 30 to 42.8 m<sup>2</sup>. These differences account for the variation in the design and the physical features of the studied houses. The criteria are based on the modification of the dwelling units and allow for a complete analysis of the spatial modifications made by the residents to their functional needs.

Table 2. The total number of houses and the willing sample

Location	Site Size (m)	Site Area (m <sup>2</sup> )	Initial Area (m <sup>2</sup> )	Number of Houses
1 BSS 1	6 x 12	72	31.2	10
2 BSS 2	6 x 11	66	37.2	13
3 Bukit Indah Kapuk	6 x 10	60	30	16
4 BSS Mandai	6 x 10.5	63	34.2	10
5 Findaria 36	6 x 11	66	36.8	21
Findaria 45	6 x 14	84	42.8	5
Total (Houses)				75

In Figure 2, uncomplicated houses from different study locations have similar arrangement types, and these houses have floorplans. Each house usually contains two bedrooms, a sitting room, a dining room, a kitchen, a bathroom, and front and back gardens.

The arranged floor plans show that the main bedroom is at the front of the house, and the smaller second bedroom is at the back of the house next to the dining room and kitchen. All houses have front and back gardens of different sizes. Some house designs have garages or carports so that residents do not have to worry about parking their cars, which is helpful for motor vehicle-owning families.

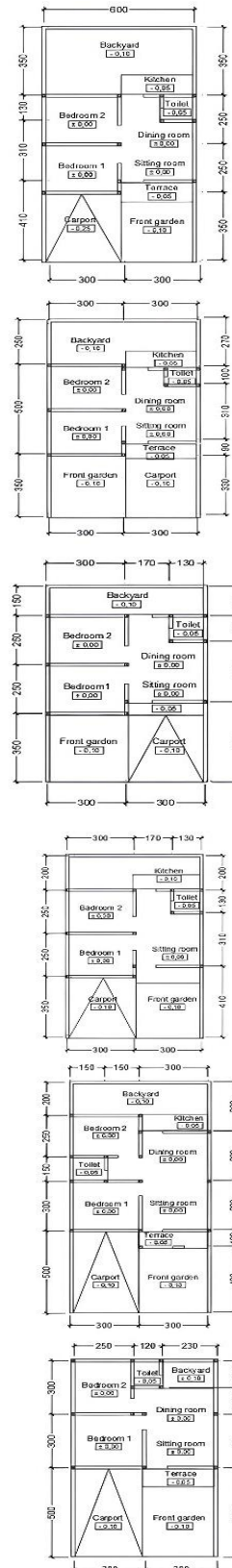


Fig. 2 The initial floor plan and front elevation of the house at each research location



Those areas demonstrate the best combination of land for smaller-sized houses. The planning provides for necessary areas for living, but in other aspects, it is considered small and efficient for providing space. The design is flexible to meet

the needs of different families living in these houses, with provisions for outside space for activities and space for putting cars, all within affordable housing limits alongside gardens.

Location of House								
left corner			Middle		Right angle			
			Behind the house					
16	7	8	7	8	7	8	12	
15	5	6	5	6	5	6	11	
14	3	4	3	4	3	4	10	
13	1	2	1	2	1	2	9	
Front of the house								
Description:								
Zona 1: Front area of the house on the right side								
Zona 2: Front area of the house on the left side								
Zona 3: Inside area of the house at the front right side								
Zona 4: Inside area of the house at the front left side								
Zona 5: Inside area of the house at the back right side								
Zona 6: Inside area of the house at the back left side								
Zona 7: Back area of the house on the right side								
Zona 8: Back area of the house on the left side								
Zona 9, 10, 11, 12: House development area on the right side								
Zona 13, 14, 15, 16: House development area on the left side								

Fig. 3 Spatial zoning pattern on the site

## 4. Results and Discussion

### 4.1. Characteristics of the House Structural System

The uniformity in the use of materials across several locations is projected through a comparative analysis of the structural elements of various housing units within the Moncongloe subsidized housing project. All locations, including BSS 1, BSS 2, Bukit Indah Kapuk, and BSS Land Mandai, examined in the foundation section, use crushed stone, while Findaria Mas 1 employs mountain stone. Similarly, the walls of all units, except for Findaria Mas 1, are made from lightweight bricks, whereas Findaria Mas 1 uses red bricks. The walls in BSS 1, BSS 2, Bukit Indah Kapuk, and BSS Land Mandai are finished with plaster, smoothing, and Epolec paint. In contrast, Findaria Mas 1 uses plaster without finishing. A 40x40 cm ceramic tile is used throughout the locations, and reinforced concrete columns (15x15 cm) and light steel roof frames are used in all areas. Finally, Spandek roofing is employed across all buildings (Table 3). This result aligns with standard practices in low-cost housing

projects, where budget-friendly materials such as crushed stone, lightweight bricks, and light steel roof frames are chosen as primary materials [2, 27]. Similar studies on subsidized housing projects worldwide demonstrate that affordability is a key factor in selecting these materials [6].

However, the differences found at Findaria Mas 1, which uses mountain stone and red brick, indicate regional variations or material availability that could affect long-term durability and thermal comfort [10, 22]. Various ceramic tile options and using Spandek roofing material meet the weather-resistant and low-maintenance components requirements in affordable housing designs [15]. However, the strict choice of materials may limit flexibility for future modifications, a concern widely discussed in the flexible housing literature [7]

In most locations, cost management efficiency is emphasized by the variety of construction materials used; however, this may hinder future flexibility. Using lightweight

materials like lightweight bricks and Spandek roofing offers a cost-effective solution. However, these materials can limit the house's capacity for changes or expansions, which is critical for meeting the growth needs of residents. This is complicated by government regulations restricting modifications within the first five years (Ministry of Public Works and Public Housing Regulation No. 242/KPTS/M/2020, 2020). Therefore, integrating flexible design principles could help make these housing units more adaptable without violating legal restrictions while ensuring they remain helpful and comfortable for residents in the long term.

Figure 3 and 4 shows the variation in the quality and types of materials used in subsidized housing projects. To reduce costs and speed up construction, most projects use lightweight bricks. However, some images showing irregular rebar binding suggest issues with the reinforcement binding in

the columns. Additionally, using light steel roof frames and Spandek roofing materials indicates that this project meets the lightweight material standards commonly used in low-cost housing projects. Furthermore, the quality of wall finishing and roof installation in some areas is still incomplete, indicating that the project is not yet fully finished.

The use of red bricks or lightweight concrete provides the advantage of sufficient durability for simple buildings and the ability to accommodate structural changes without affecting the overall stability of the building. Moreover, these materials were selected for the roof frame due to their lightweight yet sturdy nature, making them ideal for durable subsidized housing. Additionally, light steel improves building flexibility by allowing future modifications.

Table 3. Structural elements/location

Element	BSS 1	BSS 2	Bukit Indah Kapuk	BSS Land Mandai	Findaria Mas 1
Foundation	Crushed stone	Crushed stone	Crushed stone	Crushed stone	Mountain stone
Walls	Lightweight brick	Lightweight brick	Lightweight brick	Lightweight brick	Red brick
Wall Finishing	Plaster, Smoothing, Epolec paint	Plaster, Smoothing, Epolec paint	Plaster, Smoothing, Epolec paint	Plaster, Smoothing, Epolec paint	Plaster
Flooring	40x40 cm ceramic	40x40 cm ceramic	40x40 cm ceramic	40x40 cm ceramic	40x40 cm ceramic
Columns	Reinforced concrete 15x15 cm	Reinforced concrete 15x15 cm	Reinforced concrete 15x15 cm	Reinforced concrete 15x15 cm	Reinforced concrete 15x15 cm
Roof Frame	Light steel	Light steel	Light steel	Light steel	Light steel
Roof Material	Spandek	Spandek	Spandek	Spandek	Spandek

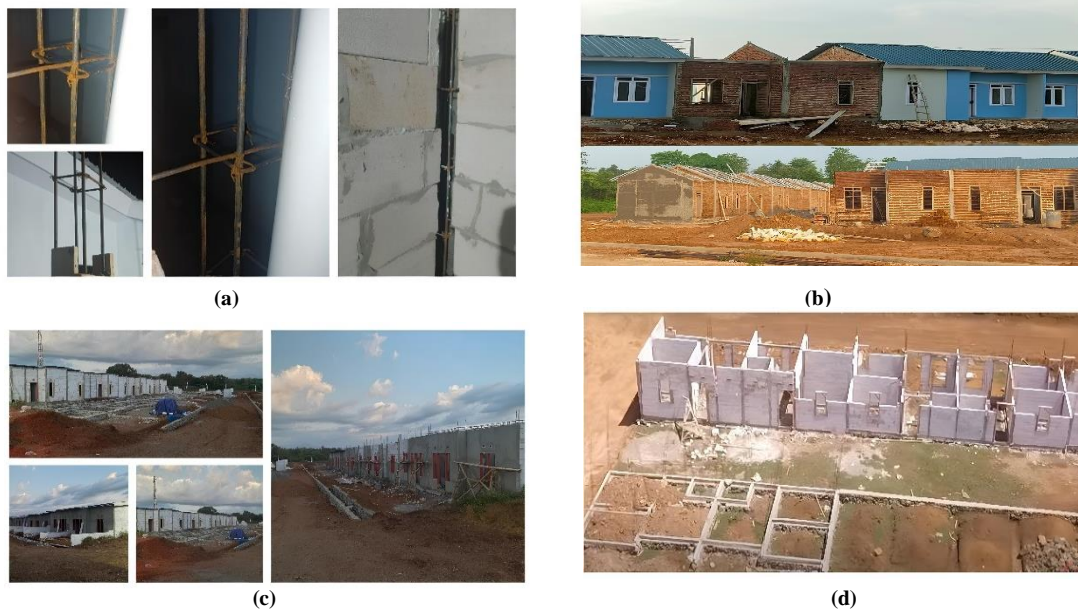


Fig. 2 Structural elements in a simple house: (a) Column in BSS 1, (b) Brick wall in Findaria Mas, (c) Lightweight brick wall in BSS 2, and (d) Crushed stone foundation and wall in BSS Mandai.

Non-compliance with the quality of column reinforcement installation according to recognized construction standards can pose risks to the long-term stability of the building. According to research, subsidized housing projects in developing countries often face problems due to using low-quality materials and budget constraints [3]. On the other hand, using lightweight bricks and steel is commonly employed in many housing projects to reduce construction costs and time efficiency [6]. Quality control during the construction process must be improved to ensure that buildings meet the necessary safety standards.

An important solution to enhance structural resilience against earthquakes and environmental pressures is the application of wall separation. However, in simple houses, separation walls between units are not implemented. A study in Cilegon found that many subsidized houses do not meet technical standards because they lack essential elements to mitigate earthquake impact, such as lintel beams and anchors in the walls and foundation. Wall separation helps reduce earthquake damage by alleviating direct pressure on the main structure [28]. In the context of vernacular architecture, such as Pontianak, the spatial layout with openings and courtyards enhances thermal comfort and building stability, demonstrating that such structural adjustments can help simple houses withstand the pressures of the humid tropical climate while improving structural stability [29].

The "Support" principle proposed by Habraken [30] states that mass housing structures should consider flexibility to accommodate the needs of the inhabitants. These principles refer to changes in the structural elements of simple houses in Moncongloe. Additionally, this model aligns with the "Core Growth House" (RIT) concept, which offers residents a basic framework to develop. According to research by Kellett and Tiple [31], the structural flexibility of housing for low-

income communities allows inhabitants to adapt spaces to meet their changing needs, as seen in several simple housing projects in developing countries.

Modular materials in walls and roofs allow for gradual expansion based on the residents' needs. According to Paryoko et al. ([22]), residents can make necessary spatial adjustments more easily with modular structures and affordable materials. However, government regulations prohibiting renovations during the first five years [5] often result in informal modifications by residents without permission.

In the long term, the absence of wall separation between house units and poor construction quality, such as improper reinforcement binding, can affect the structural integrity of a building. This may reduce the building's lifespan and increase the need for repairs or renovations in the future. When renovations are prohibited within the first five years, the durability and quality of materials are crucial for subsidized housing residents. Therefore, increasing construction quality supervision is essential to ensure that buildings last long and provide comfort and security for their inhabitants.

#### 4.2. Spatial Layout Changes

The results of vertical modifications across each location show that most units underwent vertical changes of less than 35%, with 68 units (97%) being spread across all locations. The findings indicate that most residents tend to make minimal vertical modifications. In Findaria Mas I, 23 units experienced vertical changes of less than 35%. In contrast, more significant vertical changes (35% to 75%) were recorded in only seven units (9.3%). The highest distribution of these changes was found in Findaria Mas I and BSS Mandai, with three and two units, respectively.

Table 4 Percentage of vertical/horizontal spatial layout changes

Vertical Spatial Change * Location Crosstabulation						
Vertical Spatial Change	BSS 1	BSS 2	Bukit Indah Kapuk	BSS Mandai	Findaria Mas I	Total
< 35% Change	8	16	10	11	23	68
35%-75% Change	2	0	0	2	3	7
<b>Total (Houses)</b>	<b>10</b>	<b>16</b>	<b>10</b>	<b>13</b>	<b>26</b>	<b>75</b>
Horizontal Spatial Change * Location Crosstabulation						
Horizontal Spatial Change	BSS 1	BSS 2	Bukit Indah Kapuk	BSS Mandai	Findaria Mas I	Total
< 35% Change	0	1	3	0	1	5
35%-75% Change	6	9	6	9	22	52
> 75% Change	4	6	1	4	3	18
<b>Total (Houses)</b>	<b>10</b>	<b>16</b>	<b>10</b>	<b>13</b>	<b>26</b>	<b>75</b>

This minimal vertical change may be attributed to compliance with government regulations regarding renovations, particularly the prohibition of significant

structural alterations during the first five years, as outlined in Ministry of Public Works and Housing Regulation No. 242 of 2020. However, several units with more significant vertical

changes suggest that, despite regulatory limitations, the residents' needs compel them to make modifications.

Unlike vertical changes, the crosstabulation between Horizontal Spatial Change and Location (Table 4) reveals more varied results. Most (52 units, or 69.3%) underwent horizontal changes between 35% to 75%. With nine units each, BSS Mandai and BSS 2 exhibited the most considerable horizontal changes within this range. Eighteen units, or 24%, experienced horizontal changes exceeding 75%. These findings indicate that some residents have significantly altered their home layouts. This is particularly evident in BSS 2 and BSS 1, where six and four units underwent the most substantial changes, respectively.

More considerable horizontal changes may occur when residents need to alter interior spaces to meet their needs, such as adding rooms or expanding the living area. This supports previous research emphasizing the importance of design flexibility in subsidized housing, as residents' functional needs often evolve [22]. These significant horizontal changes suggest that residents are more flexible in altering horizontal layouts, which may not always be tightly regulated by laws, even though vertical modifications are restricted.

The differences observed between horizontal and vertical changes across locations indicate that residents tend to make more alterations to horizontal layouts than vertical ones. This may be due to the immediate need to adapt spaces for functionality, while more limited vertical changes reflect adherence to stringent regulations.

Observations show that the simple houses in the Moncongloe area, Maros, have undergone significant structural changes and material usage adjustments because of spatial layout modifications by the residents. To facilitate initial construction and allow for structural growth over time, these housing projects were designed simply by government standards, using modular structural components. The dominant material characteristics include using brick or lightweight concrete walls, light steel roof frames, and modular systems in the main spaces.

### 4.3. Methods of Modifying House Structure

Almost all housing units across various locations have undergone structural additions (Table 5). Of 75 units, 74 (98.7%) have been modified, while one unit in Bukit Indah Kapuk remained unchanged. The Findaria Mas I location recorded the highest number of structural additions, with 26 units. BSS 2 and BSS Mandai added 16 and 13 units, respectively. These additions suggest that residents modify their homes to accommodate evolving spatial needs despite government regulations limiting renovations, as outlined in the Ministry of Public Works and Housing Regulation No. 242

of 2020. As emphasized by Paryoko et al. [22], which highlights the importance of flexible design in housing, these new structural additions indicate that the initial rigid designs are insufficiently flexible to meet the changing needs of residents.

Therefore, a more flexible architectural design approach is needed to accommodate future changes, such as modular designs that allow space adjustments without altering the main structure. This approach would enhance residents' quality of life and reduce dissatisfaction arising from the limitations of the initially rigid design.

Table 5. Methods of modifying house structure

Structural Additions	Location	Total
	BSS 1	BSS 2
Additions Present	10	16
No Additions	0	0
<b>Total</b>	10	16
Demolition of Old Structure	Location	Total
	BSS 1	BSS 2
Demolition Present	10	12
No Demolition	0	4
<b>Total</b>	10	16
Repair of Old Structure	Location	Total
	BSS 1	BSS 2
Repairs Present	2	12
No Repairs	8	4
<b>Total (Houses)</b>	10	16

According to Table , 47 out of 75 units (62.7%) underwent demolition of old structures. BSS 1 and Findaria Mas I had the highest number of demolitions, each with 10 units. In contrast, only two buildings in Bukit Indah Kapuk experienced demolition, indicating a lower demolition rate. This suggests that the original design of these homes did not meet the functional needs of the residents, forcing them to modify or demolish parts of the buildings. This finding supports the idea that subsidized housing often fails to meet the long-term needs of its residents [6]. Additionally, research by Friedman [10] indicates that inflexible housing designs often lead to resident dissatisfaction, prompting them to undertake demolition or other structural changes.

Furthermore, 60 out of 75 units (80%) underwent repairs to old structures. Findaria Mas I (24 units) and BSS Mandai had the most significant repairs. The high number of repairs indicates that even though these subsidized homes are relatively new, they still require improvements or upgrades. According to Mulliner et al. [19], sustainability and building quality are crucial for long-term comfort, especially in subsidized housing in developing countries. The high repair rate suggests that the initial construction quality was insufficient, prompting residents to make repairs to maintain the structural integrity of their homes.



The data reveals a trend where people frequently make substantial home changes, such as adding, demolishing, or repairing structures. This supports previous research stating that inflexible subsidized homes often do not meet the long-term needs of residents [7]. Therefore, it is crucial to consider implementing flexible and modular designs in subsidized housing projects, as this would allow residents to adjust their homes according to their changing lifestyles without extensive modifications or violations of regulations. By incorporating flexible designs, not only would the quality of life for residents improve, but the buildings would also have a longer lifespan, reducing the need for future repairs [11].

#### 4.4. Structural Changes in Physical Aspects of Housing

According to Table 5, 51 out of 75 units, or 68%, had foundation additions. The locations with the most foundation additions were Findaria Mas I (24 units) and BSS 2 (10 units).

This suggests that residents in some areas felt the need to reinforce or expand the foundations to support the structural changes they made to their homes. Adding foundations may be necessary due to changes in the home's function or the increased building load. This aligns with the findings of Friedman [10], who emphasized the importance of structural flexibility for long-term housing adaptability.

In addition, 46 units (61.3%) had column additions. BSS 2 saw the highest number of column additions with 11 units, while Findaria Mas I had 19 units. As noted by Živković et al. [6] in their research on spatial flexibility, the addition of columns indicates efforts to strengthen the vertical structure of the house. This could be necessary due to changes in the layout of the home. Vertical development or significant changes in the house's structure are often supported by adding columns to ensure stability.

Table 5. Structural changes in housing elements

Foundat ion * Location Crosstabulation							
		Location					Total
		BSS 1	BSS 2	Bukit Indah kapuk	BSS Mandai	Findaria Mas I	
Foundation	Added Foundation	3	10	5	9	24	51
	No Foundation Added	7	6	5	4	2	24
Total		10	16	10	13	26	75
Column * Location Crosstabulation							
Column	Added Column	4	11	3	9	19	46
	No Column Added	6	5	7	4	7	29
Total		10	16	10	13	26	75
Wall * Location Crosstabulation							
Wall	Added Wall	0	8	3	6	21	38
	No Wall Added	10	8	7	7	5	37
Total		10	16	10	13	26	75
Floor * Location Crosstabulation							
Floor	Added Floor	0	10	10	12	26	58
	No Floor Added	10	6	0	1	0	17
Total		10	16	10	13	26	75
Roof Frame * Location Crosstabulation							
Roof Frame	Added Roof Frame	1	7	1	4	16	29
	No Roof Frame Added	9	9	9	9	10	46
Total (Houses)		10	16	10	13	26	75



Out of 75 units, 38 (or 50.7%) underwent wall additions. Findaria Mas I recorded the highest number of wall additions (21 units), followed by BSS 2 (8 units). This indicates that residents in these locations significantly changed their home's interior and exterior layouts. They may have added space or altered room configurations to suit their needs. This phenomenon supports the assertion made by Paryoko et al. [22], who argue that housing designs must be adaptable to the spatial changes desired by the occupants.

Floor additions occurred in 58 units (77.3%), with Findaria Mas I and Bukit Indah Kapuk experiencing the most. This suggests that homeowners were more likely to make horizontal changes, such as expanding and improving the quality of floors. The addition of floors may indicate that homeowners sought to enhance the quality of their living spaces or extend their homes to meet family needs. This aligns with research conducted by Isaac et al. [15], highlighting the importance of flexibility in housing design, enabling occupants to adapt their homes to their needs.

Roof frame additions were found in 29 units (38.7%), with Findaria Mas I having the highest number at 16 units. Major renovations requiring changes to the roof structure, particularly the front sections, such as vertical expansions or modifications to the roof design for improved weather resistance, may have contributed to the addition of roof frames. Although these additions were not evenly distributed across locations, they suggest that home designs should be tailored to local climate conditions or other structural requirements. Eriksson et al. [20] emphasize the importance of flexible and modular designs to adapt to the environment and meet the occupants' needs.

According to the crosstabulation data, most subsidized housing units in various locations underwent structural element additions, particularly to the floors, columns, and foundations. These modifications indicate that the initial designs of the houses did not meet all the needs of the residents, necessitating changes to accommodate spatial and structural requirements. This highlights the critical importance of implementing flexible and modular design principles when constructing subsidized housing, as such designs would allow occupants to adapt without making significant alterations, as Magdziak et al. [7] suggested.

#### 4.5. Structural Changes to the Floor

Based on the crosstabulation of floor structure changes and location, most floor structure modifications fall into the moderate change category, which involves 35% to 75% of the floor structure, totaling 38 units (50.7%). BSS 2 recorded the highest number of changes in this category (11 units), indicating a need to adjust or improve the floor quality. Meanwhile, 35 units (46.7%) experienced changes below 35%, with only two units in BSS Mandai undergoing changes to their floor structure exceeding 75%.

Moderate floor changes indicate that residents need to improve quality or expand space without significant renovations. This aligns with research suggesting that, to meet the evolving needs of families, particularly in terms of comfort and functionality, the interior of homes often needs to be altered [6]. Additionally, the significant changes (over 75%) at most locations suggest that substantial renovations of floor structures are uncommon. This may be due to regulatory constraints or budget limitations the residents face.

Table 6. Percentage of structural changes in simple housing

Floor * Location Crosstabulation							
Changes in Floor Structure	< 35% Structural Change	7	5	5	3	15	35
	35%-75% Structural Change	3	11	5	8	11	38
	> 75% Structural Change	0	0	0	2	0	2
Total (Houses)		10	16	10	13	26	75
Roof Frame * Location Crosstabulation							
Changes in Roof Frame Structure	< 35 % Structural Change	8	11	6	10	13	48
	35%-75% Structural Change	2	5	4	3	13	27
Total (Houses)		10	16	10	13	26	75

For the roof frame, 48 out of 75 units (64%) changed by less than 35%. This suggests that most residents did not significantly modify the core roof frame structure. However, many did add roofing to the front and back sections of the house. The location with the highest number of units in this category was Findaria Mas I, with 11 units. Additionally, 27 units (36%) experienced moderate changes (35%-75%) to the roof frame structure, with Findaria Mas I and BSS 2 recording the highest number of units. The more minor or moderate changes to the roof frame structure allowed residents to make minor repairs or adjustments to enhance the roof's durability or adapt the design to local climate conditions. According to Paryoko et al. [22], structural components like the roof often require modification to improve the energy efficiency of homes or adjust to different weather conditions. This also indicates that, given the costs and time associated with large-scale renovations, residents tend to make changes gradually. Overall, the results suggest that, compared to significant changes, residents are more likely to make moderate adjustments to the floor and roof frame (front and back) rather than substantial alterations (greater than 75%). This reflects that, despite the need for changes, residents are often constrained by factors such as budget, government

regulations, and the initial design of the house, which does not allow for significant structural modifications. Therefore, using more flexible modular designs can help residents make the necessary adjustments without overhauling the entire structure. According to Pombo et al.[11], flexible and adaptive designs can improve long-term satisfaction and comfort for subsidized housing residents.

#### 4.6. Effective and Ineffective Structural Elements in Homes

Based on the structural element changes that occurred in simple homes after occupancy (as shown in Tables 6, 7, and

8), it is evident that subsidized housing residents tend to make significant modifications to several structural components to improve the functionality of their homes.

The most modified components, such as floors, columns, walls, and foundations, support horizontal space changes. These elements have proven effective in meeting residents' evolving needs without requiring significant vertical alterations. However, specific structural elements, such as the walls and columns in bathroom areas, were less effective, as residents often moved these components to the rear of the house to optimize space.

Table 8. Methods of changing space

Methods Of Changing Space	Room Function (Houses)									
	Terrace	Garage	Front Garden	Living Room	Dining Room	Bedroom 1	Bedroom 2	Bathroom	Backyard	Kitchen
Additions	22	21	5	36	50	0	2	15	3	71
No Addition	53	54	71	39	25	2	73	60	72	4
Reductions	35	12	68	14	75	1	2	5	68	5
No Reductions	40	62	7	61	0	74	73	70	7	70
Relocations	15	14	9	37	50	3	5	21	4	43
No Relocations	60	61	66	38	25	72	70	54	71	32

Changes in housing structures indicate that horizontal modifications occur more frequently, as they are easier to implement and do not conflict with regulations that restrict significant structural changes within the first five years of a building's life. The results from structural element changes and how residents modify their homes show that adding foundations and columns is crucial for supporting spatial transformations. This is particularly important for expanding or enhancing internal space without significantly altering vertical elements. This finding aligns with research stating that adaptive structures enable residents to change their layouts without costly renovations [6,10].

Structural changes reveal that, while additions to walls and roof frames are less common, they still require alterations, albeit on a smaller scale. This may be due to the incredible difficulty of modifying roof frames and walls without altering the entire building structure. As a result, residents tend to focus on more straightforward horizontal changes [11]. However, some bathroom spaces have been relocated to the rear of the house.

The floor is the most easily altered structural element, with most changes being moderate (35%-75%). Adjustments to the floor allow residents to add space or reconfigure the layout without adding excessive vertical load. Moreover, the efficiency of floor modifications illustrates design flexibility, enabling residents to make improvements without requiring substantial renovations [7].

This study demonstrates how the functions of home spaces change across various locations, with variations in structural elements such as foundations, walls, floors, and roof structures. While the front garden is often reduced, the living room and back garden emerge as areas frequently expanded.

This indicates the residents' priority to maximize indoor space. According to the crosstabulation, locations like Findaria Mas show higher levels of floor and foundation additions, while locations like BSS Mandai exhibit a more balanced distribution of changes.

In summary, the floor and walls are the most effective structural elements to modify in subsidized housing. These components significantly support horizontal layout changes, allowing homeowners to adjust their homes according to their evolving needs.

As a result, implementing flexible modular designs for these components would make it easier for residents to make changes in the future without requiring significant renovations, as emphasized by Paryoko et al. [22], who highlight the importance of adaptable designs to meet residents' long-term needs.

Housing policies in Indonesia need to be more adaptive, considering residents' future spatial development needs. Designs based on modular and flexible principles enhance residents' quality of life, prolong the lifespan of buildings, and reduce maintenance costs [32].

This study demonstrates that subsidized housing residents modify structural elements such as foundations, columns, walls, and floors. Several key conclusions can be drawn based on data analysis. According to the spatial layout results, most units underwent minimal vertical changes, while changes to horizontal structures were more common. This suggests that, given the government regulations restricting structural changes during the first five years, residents are more likely to adjust the layout of their homes horizontally to add space or improve functionality without making significant structural changes.

The aspect of how structural changes were made shows that most units had structural additions, particularly in Findaria Mas I, indicating that residents needed to expand their homes. Additionally, older structures were frequently demolished and repaired, suggesting that the initial design of subsidized homes did not always meet the needs of the residents, leading to modifications.

Analysis of the physical condition of the structure revealed that columns, floors, walls, foundations, and other structural elements were added. By adding these components, homeowners responded to the need to enhance or expand their homes, particularly regarding structural support. Conversely, residents were less inclined to add roof frames, indicating that changes to this component were made on a more limited scale.

The findings on structural modifications show that foundations, columns, and floors were the new structures added across almost all units. This indicates that residents need to strengthen or modify certain critical parts of their homes to adapt to changes in space requirements or environmental conditions. Repairs to older structures also occurred frequently, especially in Findaria Mas I, which suggests dissatisfaction with the original quality of the homes. Structural elements were added to floors and columns where residents needed to reinforce their homes. Additions to walls and roof frames were rarer, suggesting that these components were not frequently altered. This may be due to low costs or strict renovation regulations.

Structural changes to roof frames and floors were generally moderate, with most changes to floor structures falling from 35% to 75%. This suggests that residents make further adjustments to the space and function of their homes without significantly altering the overall structure.

## 5. Conclusion

Overall, the research found that subsidized housing residents were more likely to change the front and rear areas of their homes to meet functional and spatial needs not addressed by the original design. While vertical structural changes and roof frames rarely underwent significant changes, additions and improvements mainly focused on foundations, columns, and floors. The results indicate that subsidized housing should feature flexible, modular designs that allow residents to adapt their lifestyles without requiring extensive renovations or violations of applicable regulations.

The floor is the most efficient structural element to change in subsidized housing, as it supports horizontal layout changes and enables residents to adjust their homes to evolving needs. Implementing flexible modular designs for these components will facilitate future modifications without requiring major renovations.

This study enhances our understanding of the importance of adaptive design for subsidized housing. However, this study has several limitations, such as the lack of data on location and the variation in residents' socio-economic conditions, which were not thoroughly explored. Therefore, further research is needed to examine how modular designs can be incorporated into government housing policies and how this impacts residents' long-term satisfaction.

## Acknowledgments

The author would like to thank the Department of Architecture, Hasanuddin University, Makassar and the SSRG International Journal of Civil Engineering journal for allowing the author to submit the manuscript. The author hopes that this article can be a reference for further research.

## References

- [1] Tommy K. Rony, Subsidized Housing Program Continues, Developers Request This, liputan6, 2019. [Online]. Available: <https://www.liputan6.com/bisnis/read/4101938/program-rumah-subsidi-berlanjut-ini-permintaan-pengembang/>
- [2] Amir Nur Rahmat, A Thousand Subsidized Houses Built in South Sulawesi, Bisnis, 2017. [Online]. Available: <https://ekonomi.bisnis.com/read/20170923/48/692304/seribu-rumah-subsidi-dibangun-di-sulawesi-selatan/>
- [3] Heri Murniati, "KPR-RSH Subsidies in Bumi Sudiang Permai Housing, Makassar," Master's Thesis Diponegoro University, pp. 1-166, 2010. [Google Scholar] [Publisher Link]
- [4] Syamfitriani Asnur et al., "Resident's Satisfaction Level on the Quality of the Row House and the Environment," *Proceedings of the 1st World Conference on Social and Humanities Research*, vol. 654, 2001. [Google Scholar] [Publisher Link]
- [5] "Decree of the Minister of Public Works and Public Housing Number 242/KPTS/M/2020," Minister of Public Works and Public Housing of the Republic of Indonesia, pp. 1-9, 2020. [Publisher Link]
- [6] Milica Živković, Marija Stamenković, and Vladana Petrović, "Towards Flexible Housing: Basic Design Principles," *Facta Universitatis, Series: Architecture and Civil Engineering*, vol. 19, no. 2, pp. 183-192, 2021. [Google Scholar] [Publisher Link]

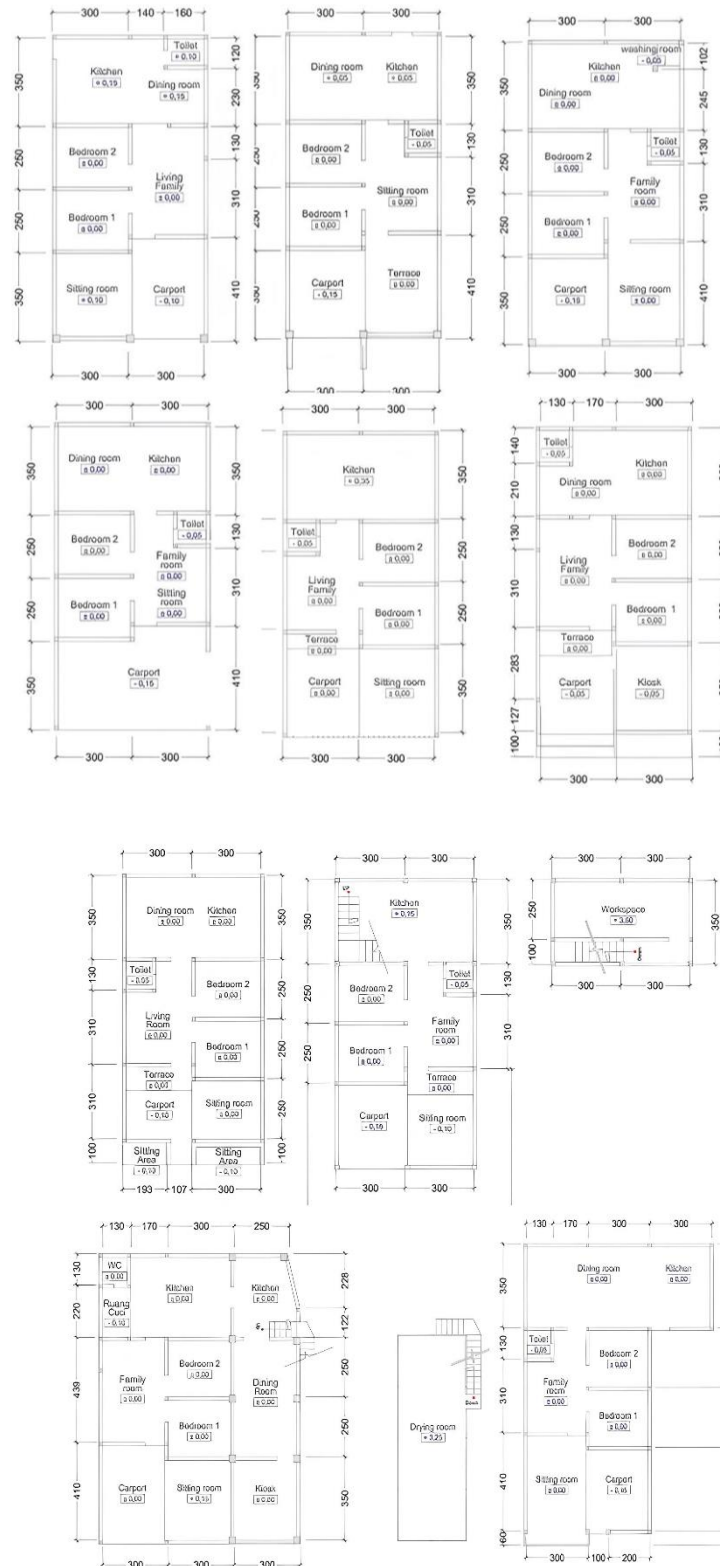
- [7] Monika Magdziak, "Flexibility and Adaptability of the Living Space to the Changing Needs of Residents," *IOP Conference Series: Materials Science and Engineering*, vol. 471, no. 7, pp. 1-7, 2019. [[CrossRef](#)] [[Google Scholar](#)] [[Publisher Link](#)]
- [8] N. John Habraken, "Design for Flexibility," *Building Research & Information*, vol. 36, no. 3, pp. 290-296, 2008. [[CrossRef](#)] [[Google Scholar](#)] [[Publisher Link](#)]
- [9] Milica Živković, Aleksandar Keković, and Slaviša Kondić, "The Motives for Application of the Flexible Elements in the Housing Interior," *Facta Universitatis, Series: Architecture and Civil Engineering*, vol. 12, no. 1, pp. 41-51, 2014. [[Google Scholar](#)] [[Publisher Link](#)]
- [10] Avi Friedman, *The Adaptable House*, McGraw-Hill, pp. 1-271, 2002. [[Google Scholar](#)] [[Publisher Link](#)]
- [11] Olatz Pombo et al., "Sustainability Assessment of Energy Saving Measures: A Multi-Criteria Approach for Residential Buildings Retrofitting - A Case Study of the Spanish Housing Stock," *Energy and Buildings*, vol. 116, pp. 384-394, 2016. [[CrossRef](#)] [[Google Scholar](#)] [[Publisher Link](#)]
- [12] A. Elkady, M. Fikry, and Z. El-sayad, "Developing an Optimized Strategy Achieving Design Flexibility in Small-Area Units: Case Study of Egyptian Economic Housing," *Alexandria Engineering Journal*, vol. 57, no. 4, pp. 4287-4297, 2018. [[CrossRef](#)] [[Google Scholar](#)] [[Publisher Link](#)]
- [13] Virginia De Jorge-Huertas, "Collaborative Designing of Communities: Helsinki and Zurich Pioneers," *ACE: Architecture, City and Environment*, vol. 15, no. 43, pp. 1-22, 2020. [[CrossRef](#)] [[Google Scholar](#)] [[Publisher Link](#)]
- [14] Agatangelo Soler Montellano, "Housing Flexibility by Spatial Indeterminacy: The Case of the Casa de las Flores in Madrid," *Archnet-IJAR: International Journal of Architectural Research*, vol. 9, no. 2, pp. 4-19, 2015. [[Google Scholar](#)] [[Publisher Link](#)]
- [15] Shabtai Isaac, Thomas Bock, and Yaniv Stoliar, "A New Approach to Building Design Modularization," *Procedia Engineering*, vol. 85, pp. 274-282, 2014. [[CrossRef](#)] [[Google Scholar](#)] [[Publisher Link](#)]
- [16] Deborah A. Howe, "The Flexible House Designing for Changing Needs," *Journal of the American Planning Association*, vol. 56, no. 1, pp. 69-77, 1990. [[CrossRef](#)] [[Google Scholar](#)] [[Publisher Link](#)]
- [17] Shabtai Isaac, and Farnaz Sadeghpour, "Facilitating the Adaptability of Buildings through the Separation of Components," *ISARC Proceedings of the International Symposium on Automation and Robotics in Construction*, pp. 1-8, 2012. [[Google Scholar](#)] [[Publisher Link](#)]
- [18] A. Paduart et al., "Technical Detailing Principles for the Design of Adaptable and Reusable Construction Elements in Temporary Dwellings," *Waste Management and the Environment IV*, vol. 109, pp. 425-433, 2008. [[CrossRef](#)] [[Google Scholar](#)] [[Publisher Link](#)]
- [19] Emma Mulliner, Kieran Smallbone, and Vida Maliene, "An Assessment of Sustainable Housing Affordability using a Multiple Criteria Decision Making Method," *Omega*, vol. 41, no. 2, pp. 270-279, 2013. [[CrossRef](#)] [[Google Scholar](#)] [[Publisher Link](#)]
- [20] Henrik Eriksson et al., "Exploring Product Modularity in Residential Building Areas," *Buildings*, vol. 11, no. 7, pp. 1-20, 2021. [[CrossRef](#)] [[Google Scholar](#)] [[Publisher Link](#)]
- [21] Krisztián Palócz, and Vilmos Katona, "The Applicability of Geometrical Games in Designing Modular Housing Solutions," *Symmetry: Culture and Science*, vol. 30, no. 1, pp. 25-41, 2019. [[CrossRef](#)] [[Google Scholar](#)] [[Publisher Link](#)]
- [22] Vijar Galax Putra Jagat Paryoko, and Afif Fajar Zakariya, "Efficient Architecture as a Sustainable and Financial Approach in Small-Scale Housing Unit Design," *ARSIR Architectural Journal*, vol. 7, no. 1, pp. 60-72, 2023. [[CrossRef](#)] [[Google Scholar](#)] [[Publisher Link](#)]
- [23] Mimoza Sylejmani, and Gabriella Medvegy, "Evaluation of Subsidized Housing, Case Study in Deçan," *Pollack Periodica: International Journal for Engineering and Information Sciences*, vol. 17, no. 2, pp. 157-161, 2022. [[CrossRef](#)] [[Google Scholar](#)] [[Publisher Link](#)]
- [24] Athifa Sri Ismiranti, "Effectiveness of 18 m2 Apartment Interior with Modular Concept," *Jurnal Waca Cipta Ruang: Scientific Journal of Interior Design*, vol. 9, no. 2, pp. 87-91, 2021. [[CrossRef](#)] [[Google Scholar](#)] [[Publisher Link](#)]
- [25] Lexy J. Moleong, and Tijun Surjaman, *Qualitative Research Methodology*, Bandung: Rosdakarya Youth, 2014. [[CrossRef](#)] [[Google Scholar](#)] [[Publisher Link](#)]
- [26] Zata Izzati Adlina, Agung Budi Sardjono, and Suzanna Ratih Sari, "Adaptation of Settlements Affected by Rob Disasters (Case Study: Bandengan Village, North Pekalongan District, Pekalongan City)," *ARCADE Journal of Architecture*, vol. 3, no. 1, pp. 1-6, 2019. [[Google Scholar](#)] [[Publisher Link](#)]
- [27] Gusti Ayu Ngurah Prasiska Dewi, and Putu Sukma Kurniawan, "Determinants of Carbon Emission Disclosure and Its Comparison in Carbon Intensive and Non-Carbon Intensive Industries," *JIMAT (Scientific Journal of Accounting Students)*, vol. 11, no. 2, pp. 242-253, 2020. [[CrossRef](#)] [[Google Scholar](#)] [[Publisher Link](#)]
- [28] M.R. Agisna, B. Baehaki, and H.B.B. Kuncoro, "Evaluation of the Suitability of Simple Residential Structures with Technical Guidelines for Earthquake Resistant Residential Housing (Case Study: Subsidized Housing in Cilegon City)," *Foundation: Journal of Civil Engineering*, vol. 11, no. 1, pp. 1-12, 2022. [[Google Scholar](#)]

- [29] Tri Wibowo Caesariadi et al., “The Influence of Spatial Planning on the Natural Eventation of Pontianak Melay Vernacular Houses,” *Langkau Betang: Journal of Architecture*, vol. 6, no. 1, pp. 54-70, 2019. [[CrossRef](#)] [[Google Scholar](#)] [[Publisher Link](#)]
- [30] N.J. Habraken, *Supports: An Alternative to Mass Housing*, 1<sup>st</sup> ed., Routledge, pp. 1-114, 2019. [[CrossRef](#)] [[Google Scholar](#)] [[Publisher Link](#)]
- [31] Peter Kellett, and A. Graham Tipple, “The Home as Workplace: A Study of Income-Generating Activities within the Domestic Setting,” *Environment & Urbanization*, vol. 12, no. 1, pp. 203-214, 2000. [[CrossRef](#)] [[Google Scholar](#)] [[Publisher Link](#)]
- [32] Jian Zuo, and Zhen-Yu Zhao, “Green Building Research—A Review of the Last Decade,” *Renewable and Sustainable Energy Reviews*, vol. 30, pp. 271-281, 2014. [[CrossRef](#)] [[Google Scholar](#)] [[Publisher Link](#)]

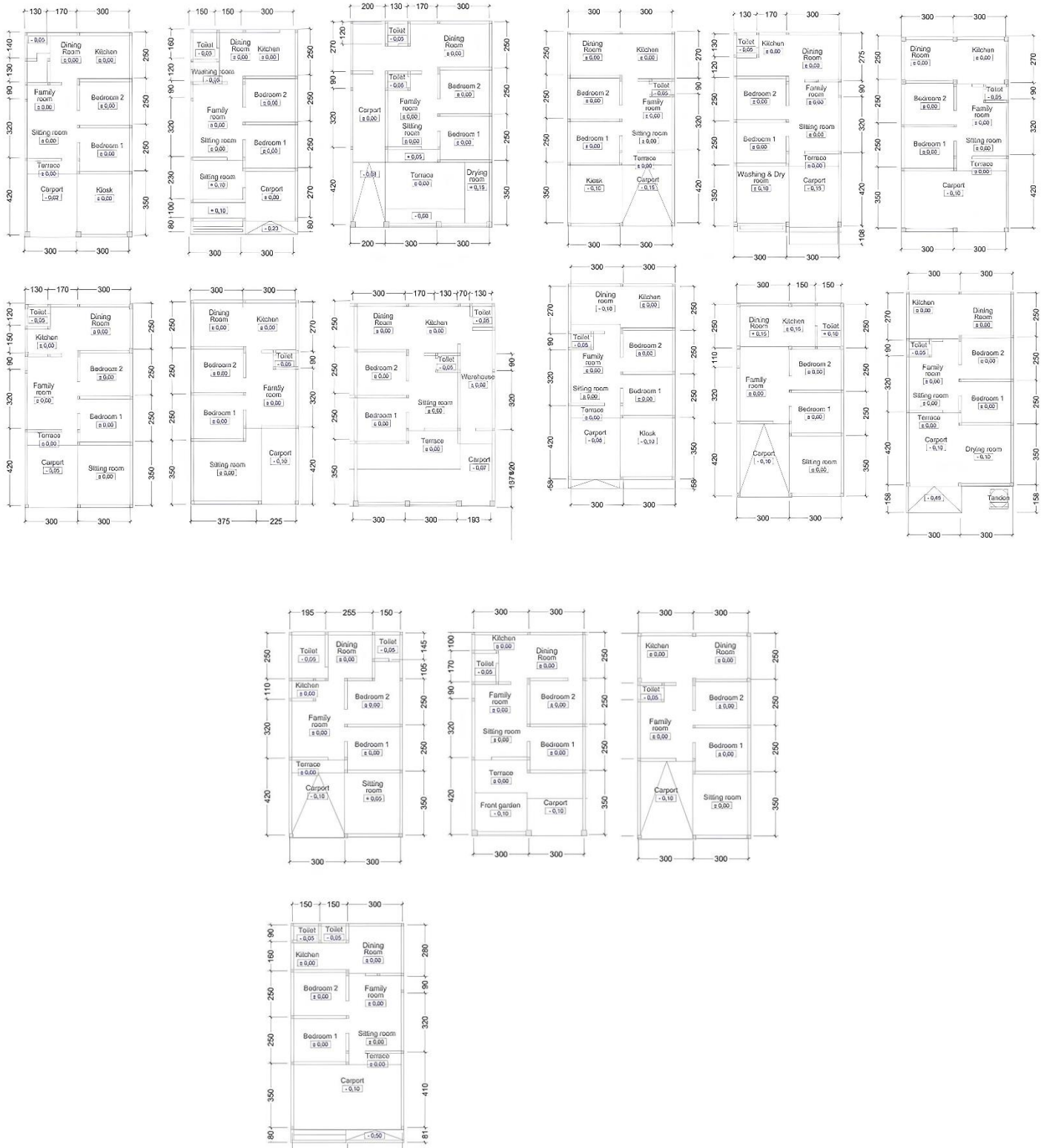


## Appendix

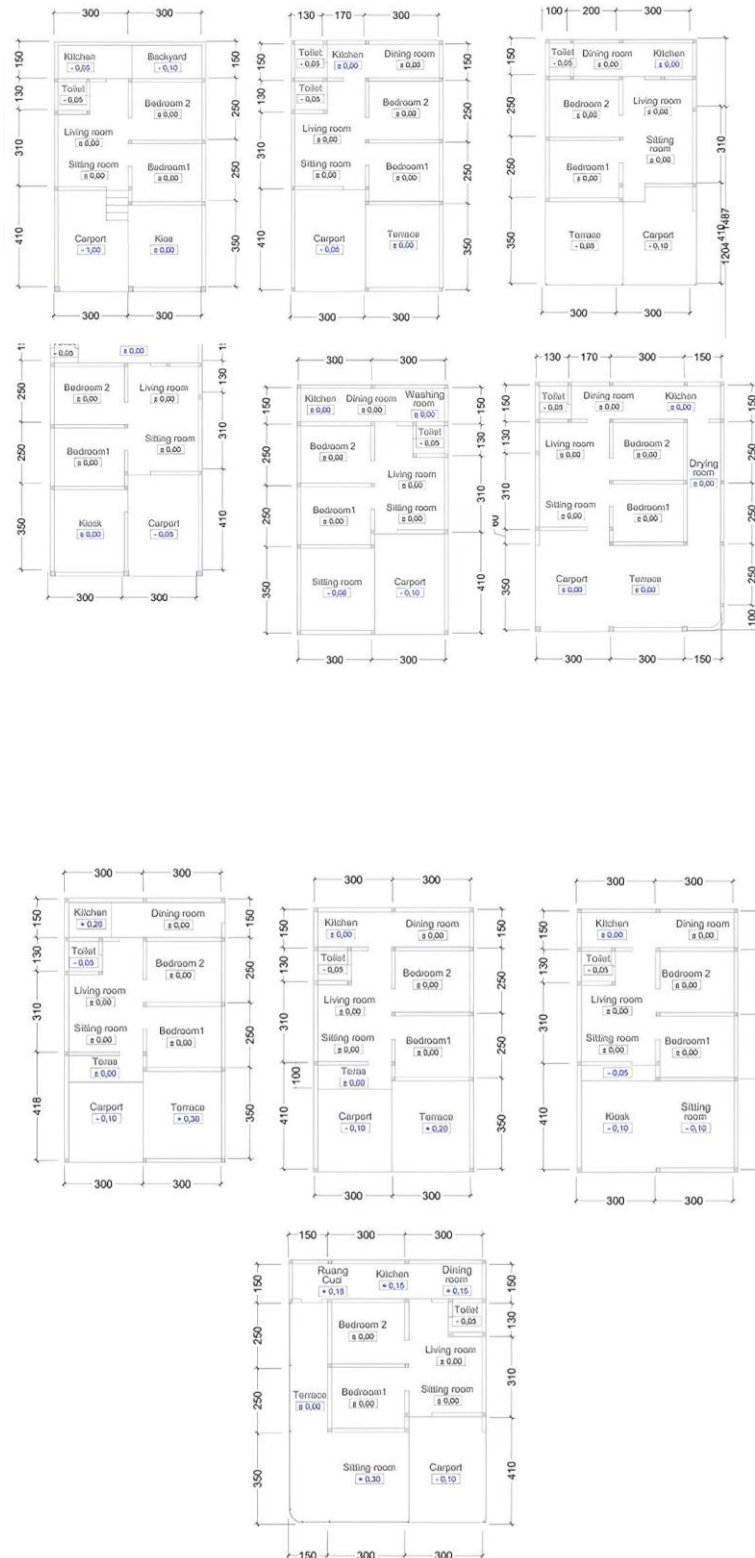
### Appendix 1. Space changes in the BSS 1 housing sample



## Appendix 2. Space changes in the BSS 2 housing sample



### Appendix 3. Space changes in the bukit indah kapuk housing sample



## Appendix 4. Space changes in the mandai housing sample



## Appendix 5. Space changes in the findaria mas 1 housing sample

